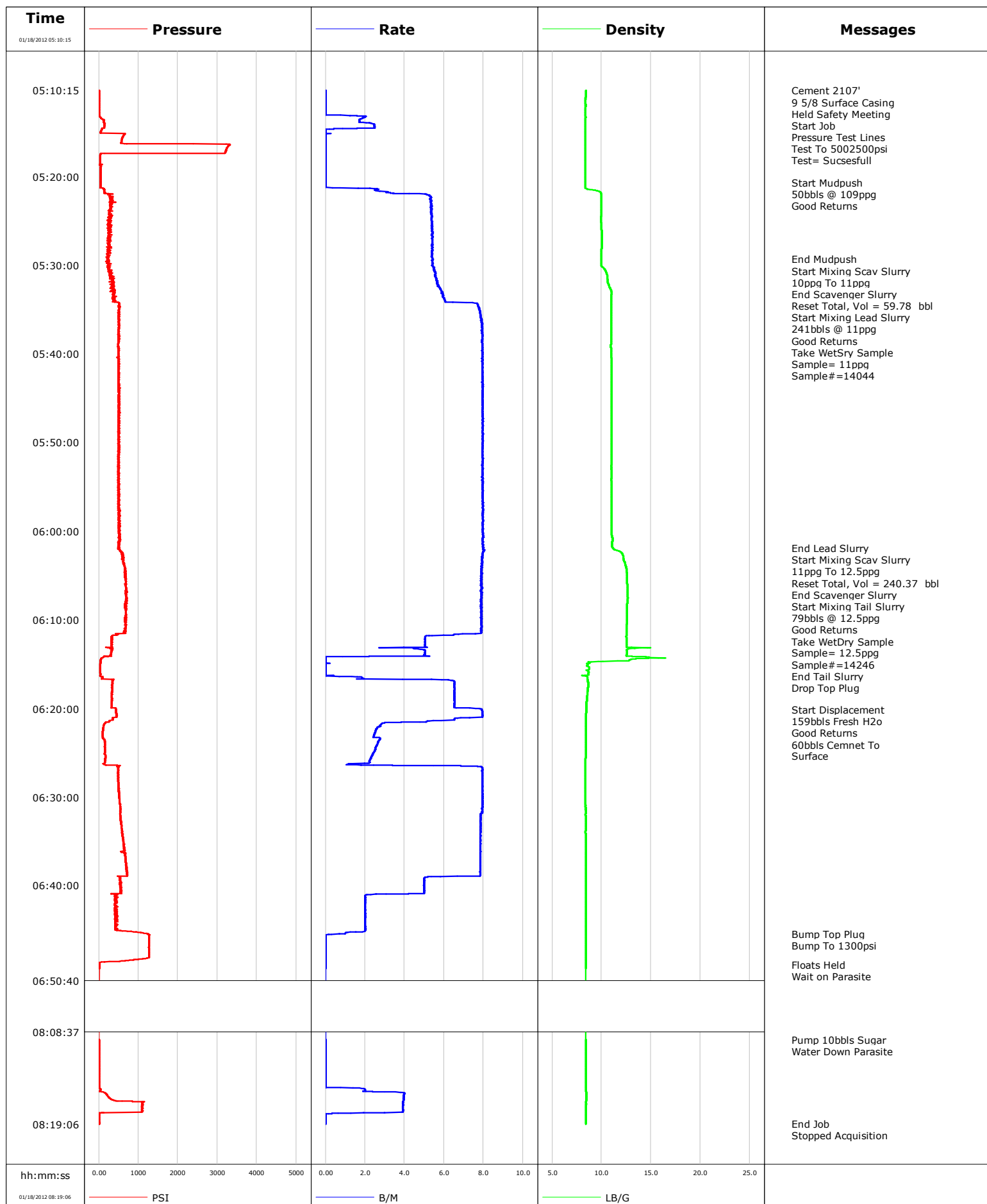


Well	DW 8609 A-28 P	Client	ENCANA
Field	N PARACHUTE	SIR No.	BQMF-00618
Engineer		Job Type	SURFACE
Country	United States	Job Date	01-18-2012

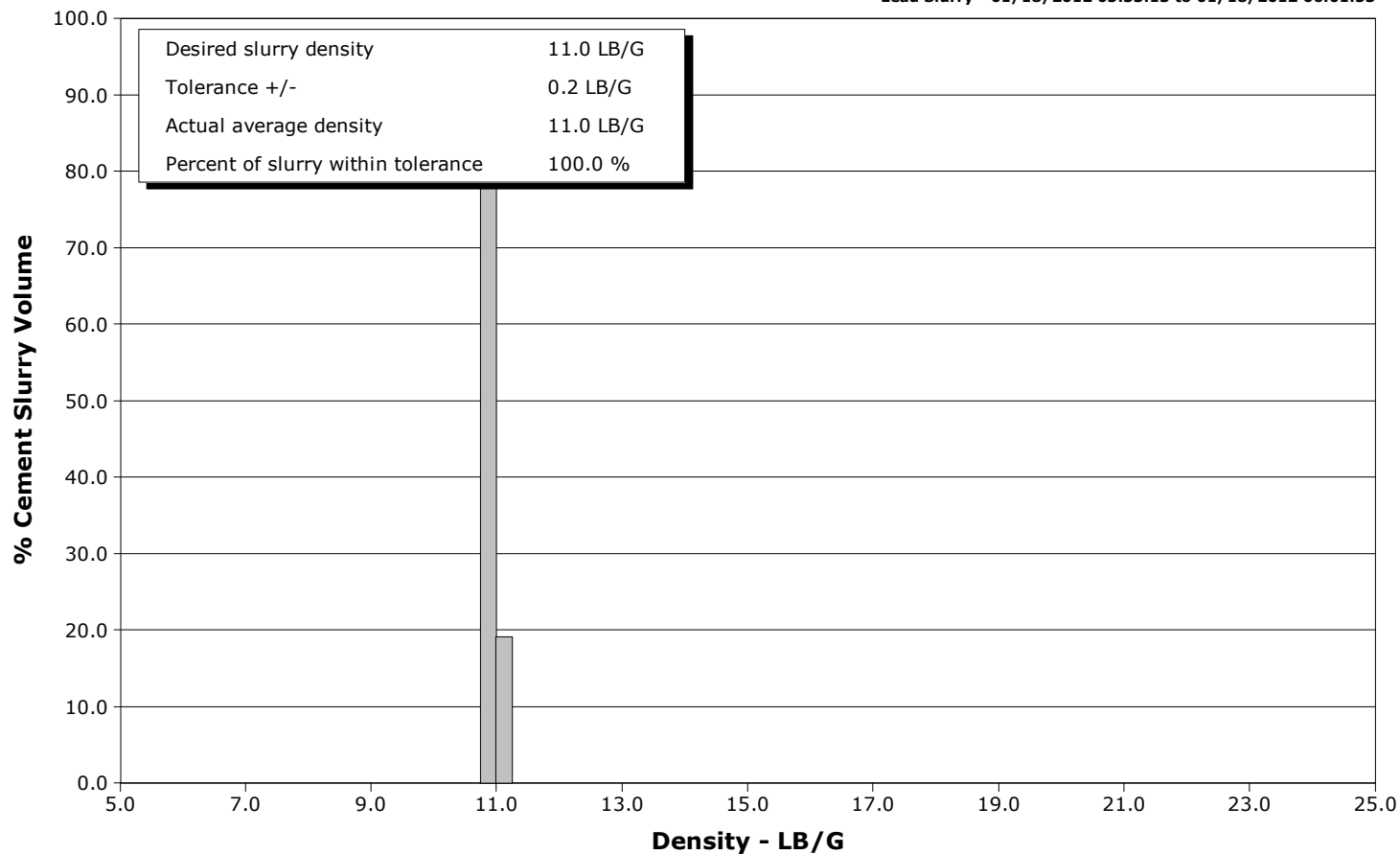


Schlumberger Cementing Qa/Qc Density Report

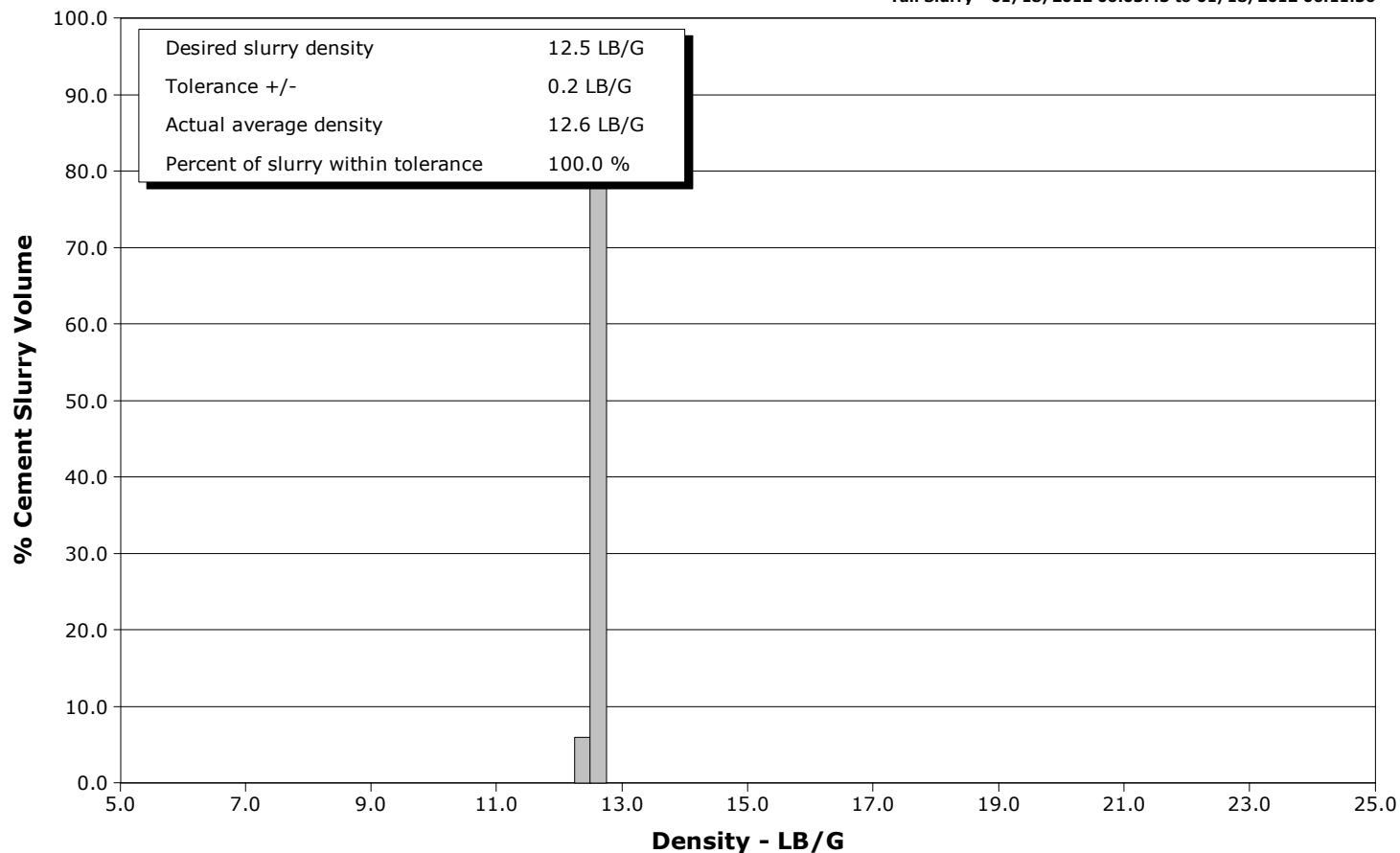
Well DW 8609 A-28 P
Field N PARACHUTE
Engineer
Country United States

Client ENCANA
SIR No. BQMF-00618
Job Type SURFACE
Job Date 01-18-2012

Lead Slurry - 01/18/2012 05:33:13 to 01/18/2012 06:01:53



Tail Slurry - 01/18/2012 06:03:43 to 01/18/2012 06:11:36





Cementing Service Report

				Customer ENCANA			Job Number BQMF-00618								
Well DW 8609 A-28 P			Location (legal) N PARACHUTE			Schlumberger Location GCO			Job Start Jan/18/2012						
Field N PARACHUTE		Formation Name/Type			Deviation		Bit Size		Well MD		Well TVD				
County GARFILED		State/Province Colorado			BHP		BHST		BHCT		Pore Press. Gradient				
Well Master 06312292208		API/UWI													
Rig Name PATTERSON 308		Drilled For Gas		Service Via Land		Casing/Liner									
Offshore Zone		Well Class New		Well Type Development		Depth, ft		Size, in		Weight, lb/ft		Grade		Thread	
						2107.0		9.630		36.0		J55		8RD	
Drilling Fluid Type Bentonite		Max. Density		Plastic Viscosity		Tubing/Drill Pipe									
						Depth,		Size,		Weight,		Grade		Thread	
Service Line Cementing		Job Type SURFACE													
Max. Allowed Tub. Press		Max. Allowed Ann. Press		WH Connection		Perforations/Open Hole									
						Top,		Bottom,				No. of Shots		Total Interval	
Service Instructions 50bbbls mud push @ 10ppg 471sks 11ppg litefill 2.87ft3/sk 246sks 12.5ppg tail 1.81ft3/sk														Diameter	
						Treat Down Casing		Displacement 159.0 bbl		Packer Type		Packer Depth			
Tubing Vol.		Casing Vol. 163.0 bbl		Annular Vol. 256.0 bbl		Openhole Vol. 419.0 bbl									
Casing/Tubing Secured <input checked="" type="checkbox"/>		1 Hole Vol. Circulated prior to Cement <input checked="" type="checkbox"/>		Casing Tools				Squeeze Job							
Lift Pressure 1042 psi				Shoe Type Guide				Squeeze Type							
Pipe Rotated <input type="checkbox"/>		Pipe Reciprocated <input type="checkbox"/>		Shoe Depth 2107.0 ft				Tool Type							
No. Centralizers		Top Plugs 1		Bottom Plugs		Stage Tool Type				Tool Depth					
Cement Head Type Single				Stage Tool Depth				Tail Pipe Size							
Job Scheduled For Jan/18/2012		Arrived on Location Jan/18/2012		Leave Location Jan/18/2012		Collar Type Diff-Fill				Tail Pipe Depth					
						Collar Depth 2060.0 ft				Sqz. Total Vol.					
Date	Time 24-hr clock	Treating Pressure PSI	Flow Rate B/M	Density LB/G	Volume BBL	Message									
01/18/2012	04:45:22					Started Acquisition									
01/18/2012	05:10:15					Cement 2107'									
01/18/2012	05:10:15					9 5/8 Surface Casing									
01/18/2012	05:10:15					Held Safety Meeting									
01/18/2012	05:10:15	10	0.0	8.39	0.0										
01/18/2012	05:10:16					Start Job									
01/18/2012	05:10:16	10	0.0	8.39	0.0										
01/18/2012	05:10:18					Pressure Test Lines									
01/18/2012	05:10:18	10	0.0	8.39	0.0										
01/18/2012	05:10:19					Test To 5002500psi									
01/18/2012	05:10:19					Test= Sucsesfull									
01/18/2012	05:10:19	10	0.0	8.39	0.0										
01/18/2012	05:10:22	9	0.0	8.39	0.0										
01/18/2012	05:10:52	6	0.0	8.38	0.0										
01/18/2012	05:11:22	7	0.0	8.38	0.0										
01/18/2012	05:11:52	6	0.0	8.38	0.0										
01/18/2012	05:12:22	6	0.0	8.38	0.0										
01/18/2012	05:12:52	7	0.0	8.38	0.0										
01/18/2012	05:13:22	59	1.9	8.38	0.5										
01/18/2012	05:13:52	124	1.7	8.37	1.4										
01/18/2012	05:14:22	135	2.5	8.38	2.6										

Well			Field		Job Start	Customer	Job Number
DW 8609 A-28 P			N PARACHUTE		Jan/18/2012	ENCANA	BQMF-00618
Date	Time 24-hr clock	Treating Pressure PSI	Flow Rate B/M	Density LB/G	Volume BBL	Message	
01/18/2012	05:15:22	628	0.0	8.38	3.1		
01/18/2012	05:15:52	577	0.0	8.38	3.1		
01/18/2012	05:16:22	3314	0.0	8.38	3.1		
01/18/2012	05:16:52	3232	0.0	8.38	3.1		
01/18/2012	05:17:22	3192	0.0	8.38	3.1		
01/18/2012	05:17:52	31	0.0	8.38	3.1		
01/18/2012	05:18:52	49	0.0	8.38	3.1		
01/18/2012	05:19:22	43	0.0	8.38	3.1		
01/18/2012	05:19:52	42	0.0	8.38	3.1		
01/18/2012	05:20:22	41	0.0	8.38	3.1		
01/18/2012	05:20:39					Start Mudpush	
01/18/2012	05:20:39					50bbls @ 109ppg	
01/18/2012	05:20:39	40	0.0	8.38	3.1		
01/18/2012	05:20:52	43	0.0	8.38	3.1		
01/18/2012	05:20:54					Good Returns	
01/18/2012	05:20:54	43	0.0	8.38	3.1		
01/18/2012	05:21:22	126	2.5	8.43	3.3		
01/18/2012	05:21:52	124	3.5	9.93	4.7		
01/18/2012	05:22:22	290	5.3	9.95	7.2		
01/18/2012	05:22:52	292	5.3	9.96	9.9		
01/18/2012	05:23:22	294	5.4	9.96	12.6		
01/18/2012	05:23:52	239	5.4	9.96	15.2		
01/18/2012	05:24:22	321	5.4	9.95	17.9		
01/18/2012	05:24:52	291	5.4	9.94	20.6		
01/18/2012	05:25:22	262	5.4	9.96	23.3		
01/18/2012	05:25:52	262	5.4	9.99	26.0		
01/18/2012	05:26:22	227	5.4	10.01	28.7		
01/18/2012	05:26:52	255	5.4	10.02	31.4		
01/18/2012	05:27:22	259	5.4	10.02	34.1		
01/18/2012	05:27:52	252	5.4	10.01	36.8		
01/18/2012	05:28:22	274	5.4	10.00	39.5		
01/18/2012	05:28:52	284	5.4	9.99	42.2		
01/18/2012	05:29:20					End Mudpush	
01/18/2012	05:29:20	235	5.4	9.96	44.7		
01/18/2012	05:29:22	254	5.4	9.96	44.9		
01/18/2012	05:29:52	225	5.4	9.99	47.6		
01/18/2012	05:30:14					Start Mixing Scav Slurry	
01/18/2012	05:30:14	214	5.5	10.14	49.6		
01/18/2012	05:30:15					10ppg To 11ppg	
01/18/2012	05:30:15	214	5.5	10.14	49.7		
01/18/2012	05:30:22	243	5.5	10.25	50.3		
01/18/2012	05:30:52	320	5.5	10.49	53.1		
01/18/2012	05:31:22	329	5.6	10.57	55.8		
01/18/2012	05:31:52	265	5.6	10.63	58.7		
01/18/2012	05:32:02					End Scavenger Slurry	
01/18/2012	05:32:02	392	5.7	10.65	59.6		
01/18/2012	05:32:04					Reset Total, Vol = 59.78 bbl	
01/18/2012	05:32:04	371	5.7	10.66	59.8		
01/18/2012	05:32:22	352	5.7	10.76	61.5		
01/18/2012	05:32:52	313	5.8	10.96	64.4		
01/18/2012	05:33:13					Start Mixing Lead Slurry	
01/18/2012	05:33:13	377	5.9	11.00	66.4		
01/18/2012	05:33:15					241bbls @ 11ppg	
01/18/2012	05:33:15					Good Returns	

Well			Field		Job Start	Customer		Job Number
DW 8609 A-28 P			N PARACHUTE		Jan/18/2012	ENCANA		BQMF-00618
Date	Time 24-hr clock	Treating Pressure PSI	Flow Rate B/M	Density LB/G	Volume BBL	Message		
01/18/2012	05:33:15					Sample= 11ppg		
01/18/2012	05:33:15	387	6.0	10.99	66.6			
01/18/2012	05:33:16					Sample#=14044		
01/18/2012	05:33:16	387	6.0	10.99	66.7			
01/18/2012	05:33:22	353	5.9	10.98	67.3			
01/18/2012	05:33:52	350	6.0	10.97	70.3			
01/18/2012	05:34:22	521	7.7	10.97	73.6			
01/18/2012	05:34:52	519	7.8	10.97	77.5			
01/18/2012	05:35:22	520	7.8	10.96	81.4			
01/18/2012	05:35:52	500	7.8	10.96	85.3			
01/18/2012	05:36:22	501	7.9	10.96	89.2			
01/18/2012	05:36:52	510	7.9	10.96	93.2			
01/18/2012	05:37:22	503	7.9	10.96	97.1			
01/18/2012	05:37:52	500	7.9	10.96	101.1			
01/18/2012	05:38:22	514	7.9	10.95	105.1			
01/18/2012	05:38:52	501	7.9	10.94	109.0			
01/18/2012	05:39:22	489	7.9	10.94	113.0			
01/18/2012	05:39:52	503	8.0	10.96	117.0			
01/18/2012	05:40:22	495	8.0	10.98	120.9			
01/18/2012	05:40:52	511	7.9	11.00	124.9			
01/18/2012	05:41:22	498	7.9	11.00	128.9			
01/18/2012	05:41:52	498	7.9	11.00	132.8			
01/18/2012	05:42:22	498	7.9	11.00	136.8			
01/18/2012	05:42:52	506	7.9	11.00	140.8			
01/18/2012	05:43:22	499	7.9	11.00	144.7			
01/18/2012	05:43:52	527	8.0	11.01	148.7			
01/18/2012	05:44:22	496	8.0	11.01	152.7			
01/18/2012	05:44:52	495	8.0	11.01	156.7			
01/18/2012	05:45:22	494	7.9	11.00	160.6			
01/18/2012	05:45:52	510	7.9	11.00	164.6			
01/18/2012	05:46:22	525	7.9	10.99	168.6			
01/18/2012	05:46:52	503	7.9	10.99	172.5			
01/18/2012	05:47:22	497	8.0	10.99	176.5			
01/18/2012	05:47:52	526	8.0	10.99	180.5			
01/18/2012	05:48:22	502	7.9	10.99	184.5			
01/18/2012	05:48:52	500	8.0	10.99	188.4			
01/18/2012	05:49:22	521	8.0	10.99	192.4			
01/18/2012	05:49:52	513	8.0	10.98	196.4			
01/18/2012	05:50:22	501	7.9	10.99	200.4			
01/18/2012	05:50:52	509	7.9	10.99	204.3			
01/18/2012	05:51:22	487	7.9	10.98	208.3			
01/18/2012	05:51:52	512	7.9	10.98	212.3			
01/18/2012	05:52:22	500	8.0	10.99	216.2			
01/18/2012	05:52:52	483	8.0	10.98	220.2			
01/18/2012	05:53:22	511	7.9	10.99	224.2			
01/18/2012	05:53:52	497	7.9	10.99	228.2			
01/18/2012	05:54:22	483	8.0	10.98	232.1			
01/18/2012	05:54:52	513	7.9	10.99	236.1			
01/18/2012	05:55:22	513	7.9	10.99	240.1			
01/18/2012	05:55:52	483	8.0	11.00	244.0			
01/18/2012	05:56:22	521	8.0	11.01	248.0			
01/18/2012	05:56:52	511	8.0	10.99	252.0			
01/18/2012	05:57:22	500	8.0	10.99	256.0			
01/18/2012	05:57:52	525	8.0	11.00	260.0			

Well			Field		Job Start	Customer	Job Number
DW 8609 A-28 P			N PARACHUTE		Jan/18/2012	ENCANA	BQMF-00618
Date	Time 24-hr clock	Treating Pressure PSI	Flow Rate B/M	Density LB/G	Volume BBL	Message	
01/18/2012	05:58:52	506	8.0	10.99	267.9		
01/18/2012	05:59:22	502	7.9	11.00	271.9		
01/18/2012	05:59:52	530	7.9	10.99	275.9		
01/18/2012	06:00:22	530	8.0	11.00	279.8		
01/18/2012	06:00:52	534	7.9	11.11	283.8		
01/18/2012	06:01:52	526	8.0	11.11	291.8		
01/18/2012	06:01:53					End Lead Slurry	
01/18/2012	06:01:53	496	8.0	11.12	291.9		
01/18/2012	06:01:55					Start Mixing Scav Slurry	
01/18/2012	06:01:55	514	8.0	11.14	292.2		
01/18/2012	06:01:56					11ppg To 12.5ppg	
01/18/2012	06:01:56	518	8.0	11.17	292.3		
01/18/2012	06:02:22	566	8.0	11.94	295.8		
01/18/2012	06:02:52	621	7.9	12.18	299.8		
01/18/2012	06:02:55					Reset Total, Vol = 240.37 bbl	
01/18/2012	06:02:55	592	7.9	12.19	300.2		
01/18/2012	06:03:22	624	7.9	12.26	303.7		
01/18/2012	06:03:42					End Scavenger Slurry	
01/18/2012	06:03:42	647	7.9	12.39	306.4		
01/18/2012	06:03:43					Start Mixing Tail Slurry	
01/18/2012	06:03:43	623	7.9	12.40	306.5		
01/18/2012	06:03:45					79bbls @ 12.5ppg	
01/18/2012	06:03:45					Good Returns	
01/18/2012	06:03:45					Take WetDry Sample	
01/18/2012	06:03:45					Sample= 12.5ppg	
01/18/2012	06:03:45					Sample#=14246	
01/18/2012	06:03:45	649	7.9	12.40	306.7		
01/18/2012	06:03:52	648	7.9	12.43	307.7		
01/18/2012	06:04:22	673	7.9	12.53	311.6		
01/18/2012	06:04:52	652	7.9	12.57	315.6		
01/18/2012	06:05:22	688	7.9	12.59	319.5		
01/18/2012	06:05:52	678	7.9	12.59	323.4		
01/18/2012	06:06:22	692	7.9	12.61	327.4		
01/18/2012	06:06:52	707	7.9	12.64	331.3		
01/18/2012	06:07:22	691	7.9	12.64	335.3		
01/18/2012	06:07:52	708	7.9	12.64	339.2		
01/18/2012	06:08:22	693	7.9	12.58	343.2		
01/18/2012	06:08:52	669	7.9	12.58	347.1		
01/18/2012	06:09:22	679	7.9	12.59	351.1		
01/18/2012	06:09:52	659	7.9	12.56	355.0		
01/18/2012	06:10:22	686	7.9	12.55	358.9		
01/18/2012	06:10:52	674	7.9	12.52	362.9		
01/18/2012	06:11:22	662	7.9	12.51	366.8		
01/18/2012	06:11:36					End Tail Slurry	
01/18/2012	06:11:36	495	6.9	12.51	368.6		
01/18/2012	06:11:37					Drop Top Plug	
01/18/2012	06:11:37	480	6.7	12.51	368.8		
01/18/2012	06:11:52	324	5.1	12.50	370.3		
01/18/2012	06:12:22	322	5.0	12.51	372.8		
01/18/2012	06:12:52	325	5.0	12.52	375.3		
01/18/2012	06:13:22	363	5.0	12.56	377.7		
01/18/2012	06:13:52	304	5.0	12.56	380.2		
01/18/2012	06:14:22	63	0.0	14.78	381.5		
01/18/2012	06:14:52	41	0.0	8.81	381.5		

Well			Field		Job Start	Customer		Job Number
DW 8609 A-28 P			N PARACHUTE		Jan/18/2012	ENCANA		BQMF-00618
Date	Time 24-hr clock	Treating Pressure PSI	Flow Rate B/M	Density LB/G	Volume BBL	Message		
01/18/2012	06:15:52	32	0.0	8.69	381.5			
01/18/2012	06:16:22	33	0.0	8.36	381.5			
01/18/2012	06:16:52	346	6.5	8.62	383.0			
01/18/2012	06:17:22	330	6.5	8.65	386.2			
01/18/2012	06:17:52	335	6.5	8.60	389.5			
01/18/2012	06:18:22	327	6.5	8.55	392.8			
01/18/2012	06:18:52	334	6.5	8.52	396.0			
01/18/2012	06:19:22	321	6.5	8.47	399.3			
01/18/2012	06:19:52	324	6.5	8.45	402.5			
01/18/2012	06:20:07					Start Displacement		
01/18/2012	06:20:07	444	7.9	8.44	404.3			
01/18/2012	06:20:08					159bbls Fresh H2o		
01/18/2012	06:20:08					Good Returns		
01/18/2012	06:20:08					60bbls Cemnet To		
01/18/2012	06:20:08					Surface		
01/18/2012	06:20:08	439	7.9	8.44	404.5			
01/18/2012	06:20:22	438	7.9	8.44	406.3			
01/18/2012	06:20:52	446	7.9	8.41	410.3			
01/18/2012	06:21:22	281	5.9	8.40	413.8			
01/18/2012	06:21:52	124	2.8	8.38	415.7			
01/18/2012	06:22:22	102	2.6	8.39	417.1			
01/18/2012	06:22:52	94	2.5	8.39	418.3			
01/18/2012	06:23:22	92	2.8	8.39	419.6			
01/18/2012	06:23:52	150	2.6	8.39	420.9			
01/18/2012	06:24:22	148	2.5	8.39	422.2			
01/18/2012	06:24:52	150	2.5	8.39	423.5			
01/18/2012	06:25:22	163	2.3	8.39	424.7			
01/18/2012	06:25:52	160	2.2	8.37	425.8			
01/18/2012	06:26:22	165	1.6	8.36	426.8			
01/18/2012	06:26:52	494	7.9	8.37	430.2			
01/18/2012	06:27:22	486	7.9	8.35	434.1			
01/18/2012	06:27:52	497	7.9	8.36	438.1			
01/18/2012	06:28:22	496	7.9	8.37	442.0			
01/18/2012	06:28:52	501	7.9	8.37	446.0			
01/18/2012	06:29:22	503	7.9	8.37	450.0			
01/18/2012	06:29:52	515	7.9	8.38	454.0			
01/18/2012	06:30:22	518	7.9	8.38	457.9			
01/18/2012	06:30:52	542	7.9	8.38	461.9			
01/18/2012	06:31:22	545	7.9	8.38	465.9			
01/18/2012	06:31:52	534	7.9	8.38	469.8			
01/18/2012	06:32:22	555	7.8	8.38	473.7			
01/18/2012	06:32:52	563	7.8	8.38	477.7			
01/18/2012	06:33:22	571	7.8	8.39	481.6			
01/18/2012	06:33:52	582	7.9	8.38	485.5			
01/18/2012	06:34:22	600	7.8	8.39	489.4			
01/18/2012	06:34:52	617	7.8	8.39	493.4			
01/18/2012	06:35:22	621	7.8	8.39	497.3			
01/18/2012	06:35:52	636	7.8	8.39	501.2			
01/18/2012	06:36:22	663	7.8	8.39	505.1			
01/18/2012	06:36:52	666	7.8	8.39	509.0			
01/18/2012	06:37:22	692	7.8	8.39	512.9			
01/18/2012	06:37:52	688	7.8	8.39	516.8			
01/18/2012	06:38:22	706	7.8	8.39	520.8			
01/18/2012	06:38:52	716	7.8	8.39	524.7			

Well			Field		Job Start	Customer		Job Number
DW 8609 A-28 P			N PARACHUTE		Jan/18/2012	ENCANA		BQMF-00618
Date	Time 24-hr clock	Treating Pressure PSI	Flow Rate B/M	Density LB/G	Volume BBL	Message		
01/18/2012	06:39:52	525	5.0	8.39	529.9			
01/18/2012	06:40:22	542	5.0	8.39	532.4			
01/18/2012	06:40:52	577	5.0	8.39	534.9			
01/18/2012	06:41:22	473	2.0	8.39	536.2			
01/18/2012	06:41:52	471	2.0	8.39	537.2			
01/18/2012	06:42:22	473	2.0	8.39	538.2			
01/18/2012	06:42:52	403	2.0	8.39	539.2			
01/18/2012	06:43:22	411	2.0	8.39	540.2			
01/18/2012	06:43:52	412	2.0	8.39	541.2			
01/18/2012	06:44:22	412	2.0	8.39	542.2			
01/18/2012	06:44:52	413	2.0	8.39	543.2			
01/18/2012	06:45:22	1147	1.0	8.39	544.1			
01/18/2012	06:45:26					Bump Top Plug		
01/18/2012	06:45:26	1250	1.0	8.39	544.1			
01/18/2012	06:45:32					Bump To 1300psi		
01/18/2012	06:45:32	1294	0.0	8.39	544.2			
01/18/2012	06:45:52	1265	0.0	8.39	544.2			
01/18/2012	06:46:22	1264	0.0	8.39	544.2			
01/18/2012	06:46:52	1263	0.0	8.39	544.2			
01/18/2012	06:47:22	1262	0.0	8.39	544.2			
01/18/2012	06:47:52	1263	0.0	8.39	544.2			
01/18/2012	06:48:22	890	0.0	8.39	544.2			
01/18/2012	06:48:52	22	0.0	8.40	544.2			
01/18/2012	06:48:53					Floats Held		
01/18/2012	06:48:53	23	0.0	8.40	544.2			
01/18/2012	06:49:03					Wait on Parasite		
01/18/2012	06:49:03	22	0.0	8.40	544.2			
01/18/2012	06:49:22	21	0.0	8.40	544.2			
01/18/2012	08:09:31					Pump 10bbls Sugar		
01/18/2012	08:09:31	8	0.0	8.39	544.2			
01/18/2012	08:09:52	8	0.0	8.39	544.2			
01/18/2012	08:10:10					Water Down Parasite		
01/18/2012	08:10:10	8	0.0	8.39	544.2			
01/18/2012	08:10:22	8	0.0	8.39	544.2			
01/18/2012	08:10:52	8	0.0	8.39	544.2			
01/18/2012	08:11:22	8	0.0	8.39	544.2			
01/18/2012	08:11:52	8	0.0	8.39	544.2			
01/18/2012	08:12:22	8	0.0	8.39	544.2			
01/18/2012	08:12:52	7	0.0	8.39	544.2			
01/18/2012	08:13:22	8	0.0	8.39	544.2			
01/18/2012	08:13:52	7	0.0	8.39	544.2			
01/18/2012	08:14:22	7	0.0	8.39	544.2			
01/18/2012	08:14:52	8	0.0	8.39	544.2			
01/18/2012	08:15:22	23	1.9	8.42	544.9			
01/18/2012	08:15:52	212	4.0	8.46	546.7			
01/18/2012	08:16:22	344	3.9	8.44	548.7			
01/18/2012	08:16:52	1104	3.9	8.43	550.7			
01/18/2012	08:17:22	1097	3.9	8.43	552.6			
01/18/2012	08:17:52	16	0.6	8.40	554.4			
01/18/2012	08:18:22	4	0.0	8.40	554.4			
01/18/2012	08:18:52	19	0.0	8.40	554.4			
01/18/2012	08:19:01					End Job		
01/18/2012	08:19:01	16	0.0	8.40	554.4			

Well DW 8609 A-28 P	Field N PARACHUTE	Job Start Jan/18/2012	Customer ENCANA	Job Number BQMF-00618
-------------------------------	-----------------------------	---------------------------------	---------------------------	---------------------------------

Post Job Summary

Average Pump Rates, bbl/min					Volume of Fluid Injected, bbl			
Slurry 6.4	N2	Mud 0.0	Maximum Rate 8.0	Total Slurry 554.4	Mud 0.0	Spacer 66.4	N2	
Treating Pressure Summary, psi					Breakdown Fluid			
Maximum 3320	Final 177	Average 259	Bump Plug to 1300	Breakdown	Type	Volume	Density	
Avg. N2 Percent		Designed Slurry Volume 320.0 bbl	Displacement 175.4 bbl	Mix Water Temp 58 degF	Cement Circulated to Surface? <input checked="" type="checkbox"/>	Volume 60.0 bbl		
					Washed Thru Perfs <input type="checkbox"/>	To		
Customer or Authorized Representative RANDY BURKE			Schlumberger Supervisor JASON CRICK			Circulation Lost <input type="checkbox"/>	Job Completed <input checked="" type="checkbox"/>	
					-		-	