

The Road to Excellence Starts with Safety

Sold To #: 300721	Ship To #: 2953873	Quote #:	Sales Order #: 9844810
Customer: WPX ENERGY ROCKY MOUNTAIN LLC-EBUS	Customer Rep: Oaks, Rick		
Well Name: RWF	Well #: 424-36	API/UWI #: 05-045-21477	
Field: RULISON	City (SAP): RIFLE	County/Parish: Garfield	State: Colorado
Lat: N 39.482 deg. OR N 39 deg. 28 min. 55.942 secs.	Long: W 107.837 deg. OR W -108 deg. 9 min. 47.653 secs.		
Contractor: NABORS 576	Rig/Platform Name/Num: NABORS 576		
Job Purpose: Cement Surface Casing			
Well Type: Development Well	Job Type: Cement Surface Casing		
Sales Person: MAYO, MARK	Srvc Supervisor: ANGLESTEIN, TROY	MBU ID Emp #: 436099	

Job Personnel

HES Emp Name	Exp Hrs	Emp #	HES Emp Name	Exp Hrs	Emp #	HES Emp Name	Exp Hrs	Emp #
ANDERSON, ADAM S	0.0	456683	ANGLESTEIN, TROY Edward WM	0.0	436099	WEAVER, CARLTON Russell	0.0	457698

Equipment

HES Unit #	Distance-1 way	HES Unit #	Distance-1 way	HES Unit #	Distance-1 way	HES Unit #	Distance-1 way
10616651C	60 mile	10867531	60 mile	10989685	60 mile	11583933	60 mile
11808827	60 mile						

Job Hours

Date	On Location Hours	Operating Hours	Date	On Location Hours	Operating Hours	Date	On Location Hours	Operating Hours

TOTAL	Total is the sum of each column separately							
-------	--	--	--	--	--	--	--	--

Job

Formation Name	Top	Bottom	Called Out	Date	Time	Time Zone
Formation Depth (MD)			On Location	27 - Oct - 2012	12:00	MST
Form Type	BHST		Job Started	27 - Oct - 2012	16:30	MST
Job depth MD	1208. ft	Job Depth TVD	Job Completed	28 - Oct - 2012	00:10	MST
Water Depth		Wk Ht Above Floor	Departed Loc	28 - Oct - 2012	01:02	MST
Perforation Depth (MD)	From	To		28 - Oct - 2012	02:00	MST

Well Data

Description	New / Used	Max pressure psig	Size in	ID in	Weight lbm/ft	Thread	Grade	Top MD ft	Bottom MD ft	Top TVD ft	Bottom TVD ft
OPEN HOLE SECTION				13.5				.	1208.		
SURFACE CASING	Unknown		9.625	9.001	32.3		I-80	.	1117.5		

Sales/Rental/3rd Party (HES)

Description	Qty	Qty uom	Depth	Supplier
PLUG,CMTG,TOP,9 5/8,HWE,8.16 MIN/9.06 MA	1	EA		

Tools and Accessories

Type	Size	Qty	Make	Depth	Type	Size	Qty	Make	Depth	Type	Size	Qty	Make
Guide Shoe					Packer					Top Plug			
Float Shoe					Bridge Plug					Bottom Plug			
Float Collar					Retainer					SSR plug set			
Insert Float										Plug Container			
Stage Tool										Centralizers			

Miscellaneous Materials

Gelling Agt	Conc	Surfactant	Conc	Acid Type	Qty	Conc	%
Treatment Fld	Conc	Inhibitor	Conc	Sand Type	Size	Qty	

Fluid Data

Stage/Plug #: 1

HALLIBURTON***Cementing Job Summary***

Fluid #	Stage Type	Fluid Name	Qty	Qty uom	Mixing Density lbm/gal	Yield ft ³ /sk	Mix Fluid Gal/sk	Rate bbl/min	Total Mix Fluid Gal/sk
1	Water Spacer		20.00	bbl	.	.0	.0	.0	
2	VersaCem Lead Cement	VERSACEM (TM) SYSTEM (452010)	160.0	sacks	12.3	2.38	13.75		13.75
	13.75 Gal	FRESH WATER							
3	VersaCem Tail Cement	VERSACEM (TM) SYSTEM (452010)	160.0	sacks	12.8	2.11	11.75		11.75
4	Displacement		90.00	bbl	.	.0	.0	.0	
Calculated Values		Pressures		Volumes					
Displacement		Shut In: Instant		Lost Returns		Cement Slurry		Pad	
Top Of Cement		5 Min		Cement Returns		Actual Displacement		Treatment	
Frac Gradient		15 Min		Spacers		Load and Breakdown		Total Job	
Rates									
Circulating		Mixing		Displacement		Avg. Job			
Cement Left In Pipe	Amount	43.2 ft	Reason	Shoe Joint					
Frac Ring # 1 @	ID	Frac ring # 2 @	ID	Frac Ring # 3 @	ID	Frac Ring # 4 @	ID		
The Information Stated Herein Is Correct				Customer Representative Signature					

The Road to Excellence Starts with Safety

Sold To #: 300721	Ship To #: 2953873	Quote #:	Sales Order #: 9844810
Customer: WPX ENERGY ROCKY MOUNTAIN LLC-EBUS	Customer Rep: Oaks, Rick		
Well Name: RWF	Well #: 424-36	API/UWI #: 05-045-21477	
Field: RULISON	City (SAP): RIFLE	County/Parish: Garfield	State: Colorado
Legal Description:			
Lat: N 39.482 deg. OR N 39 deg. 28 min. 55.942 secs.		Long: W 107.837 deg. OR W -108 deg. 9 min. 47.653 secs.	
Contractor: NABORS 576	Rig/Platform Name/Num: NABORS 576		
Job Purpose: Cement Surface Casing	Ticket Amount:		
Well Type: Development Well	Job Type: Cement Surface Casing		
Sales Person: MAYO, MARK	Srv Supervisor: ANGLESTEIN, TROY	MBU ID Emp #: 436099	

Activity Description	Date/Time	Cht #	Rate bbl/min	Volume bbl		Pressure psig		Comments
				Stage	Total	Tubing	Casing	
Call Out	10/27/2012 12:00							
Pre-Convoy Safety Meeting	10/27/2012 18:12							ALL HES EMPLOYEES
Arrive At Loc	10/27/2012 18:12							RIG STILL TRIPPING OUT OF HOLE, CIRCULATED FOR 1 HOUR
Assessment Of Location Safety Meeting	10/27/2012 18:12							ALL HES EMPLOYEES
Rig-Up Equipment	10/27/2012 18:12							1 HT 400 PUMP TRUCK, 1 660 BULK TRUCK, 1 9.625 QUICK LATCH PLUG CONTAINER, 1 F 550 P/U
Pre-Job Safety Meeting	10/27/2012 18:12							ALL HES EMPLOYEES, RIG CREW, CO REP.
Start Job	10/28/2012 00:10							9.625 CASING SET AT 1117.52', 29' LANDING JOINT FC: 1103.32', TD: 1208, OPEN HOLE 13.5", MUD WT 9.8 PPG, 800 BBLS OF H2O ON LOCATION, WATER SAMPLE SUBMITTED. GOOD RETURNS THROUGHOUT JOB
Pump Water	10/28/2012 00:10		2	2			50.0	FILL LINES
Pressure Test	10/28/2012 00:12		0.5	0.5		2960.0		NO LEAKS
Pump Spacer 1	10/28/2012 00:15		4	20			128.0	FRESH WATER

Cementing Job Log

Activity Description	Date/Time	Cht #	Rate bbl/min	Volume bbl		Pressure psig		Comments
				Stage	Total	Tubing	Casing	
Pump Lead Cement	10/28/2012 00:28		8	67.8			435.0	160 SKS VERSACEM CMT TO BE MIXED AT 12.3 PPG, 2.38 YIELD, 13.75 GAL/SK, CMT TO BE WEIGHED VIA PRESSURE BALANCED MUD SCALES WET AND DRY SAMPLES SUBMITTED
Pump Tail Cement	10/28/2012 00:30		8	60.1			460.0	160 SKS VERSACEM CMT TO BE MIXED AT 12.8 PPG, 2.11 YIELD, 11.75 GAL/SK, CMT TO BE WEIGHED VIA PRESSURE BALANCED MUD SCALES. WET AND DRY SAMPLES SUBMITTED.
Shutdown	10/28/2012 00:38							FOR NO MORE THEN 5 MINUTES,
Drop Plug	10/28/2012 00:42							PLUG LAUNCHED
Pump Displacement	10/28/2012 00:43		10	86.8			625.0	FRESHWATER
Cement Returns to Surface	10/28/2012 00:50		10	56			600.0	30 BBLS OF CEMENT TO SURFACE.
Slow Rate	10/28/2012 00:53		2	76.8			250.0	10 BBLS PRIOR TO CALCULATED DISPLACEMENT
Bump Plug	10/28/2012 00:58		2	86.8			263.0	PLUG LANDED AT 738 HELD FOR TWO MINUTES
Check Floats	10/28/2012 01:00							FLOATS HOLDING, NO ANNULAR FLOW
End Job	10/28/2012 01:01							THANK YOU FOR USING HES FROM TROY ANGLESTEIN AND CREW.
Post-Job Safety Meeting (Pre Rig-Down)	10/28/2012 01:10							ALL HES EMPLOYEES
Pre-Convoy Safety Meeting	10/28/2012 01:50							ALL HES EMPLOYEES
Rig-Down Equipment	10/28/2012 01:50							SAFELY
Crew Leave Location	10/28/2012 02:00							SITE WAS AS CLEAN AS WHEN WE ARRIVED

Sold To #: 300721

Ship To #: 2953873

Quote #:

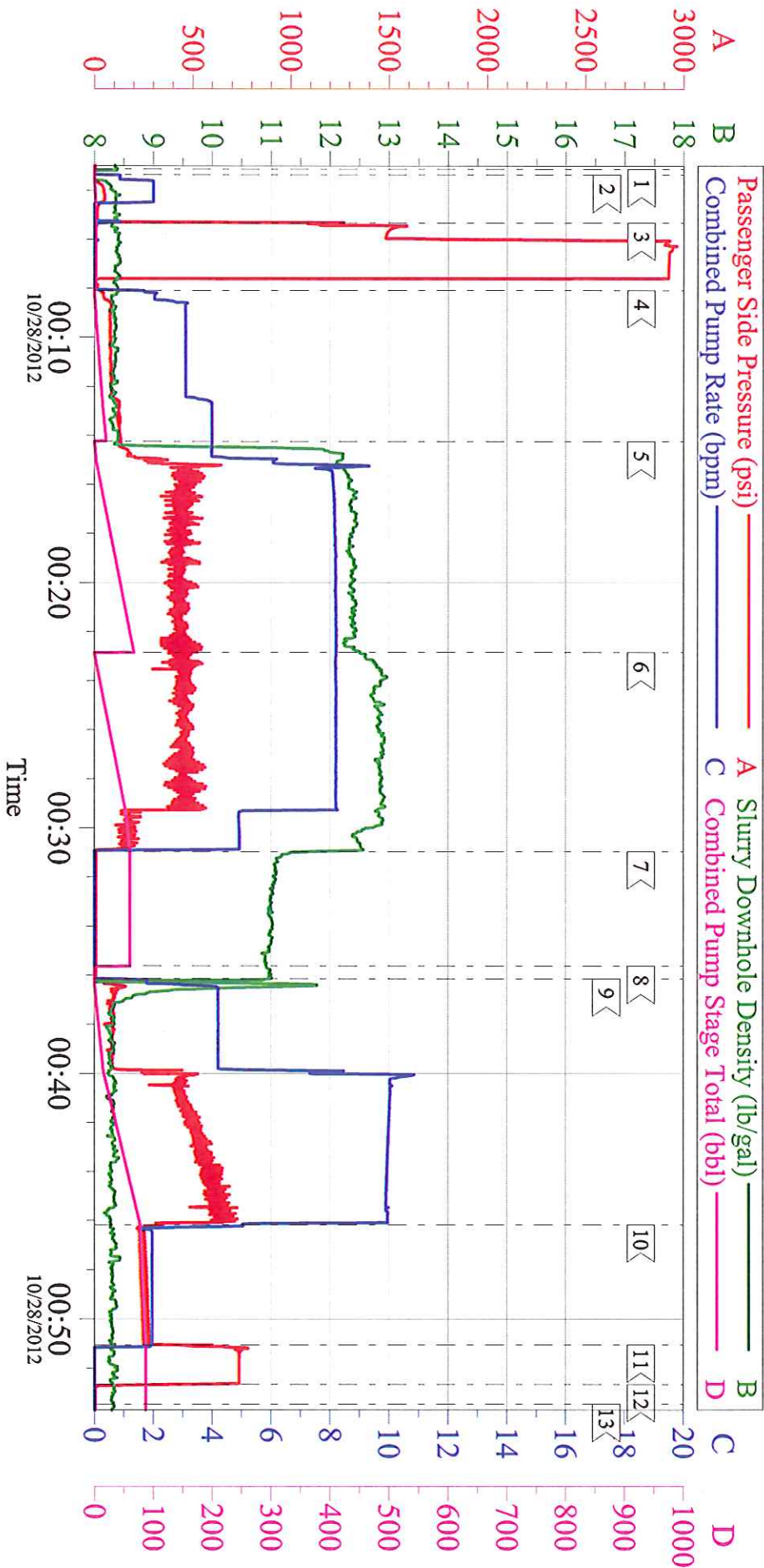
Sales Order #: 9844810

SUMMIT Version: 7.3.0076

Saturday, February 09, 2013 12:53:00

WPX ENERGY - RWF 424-36

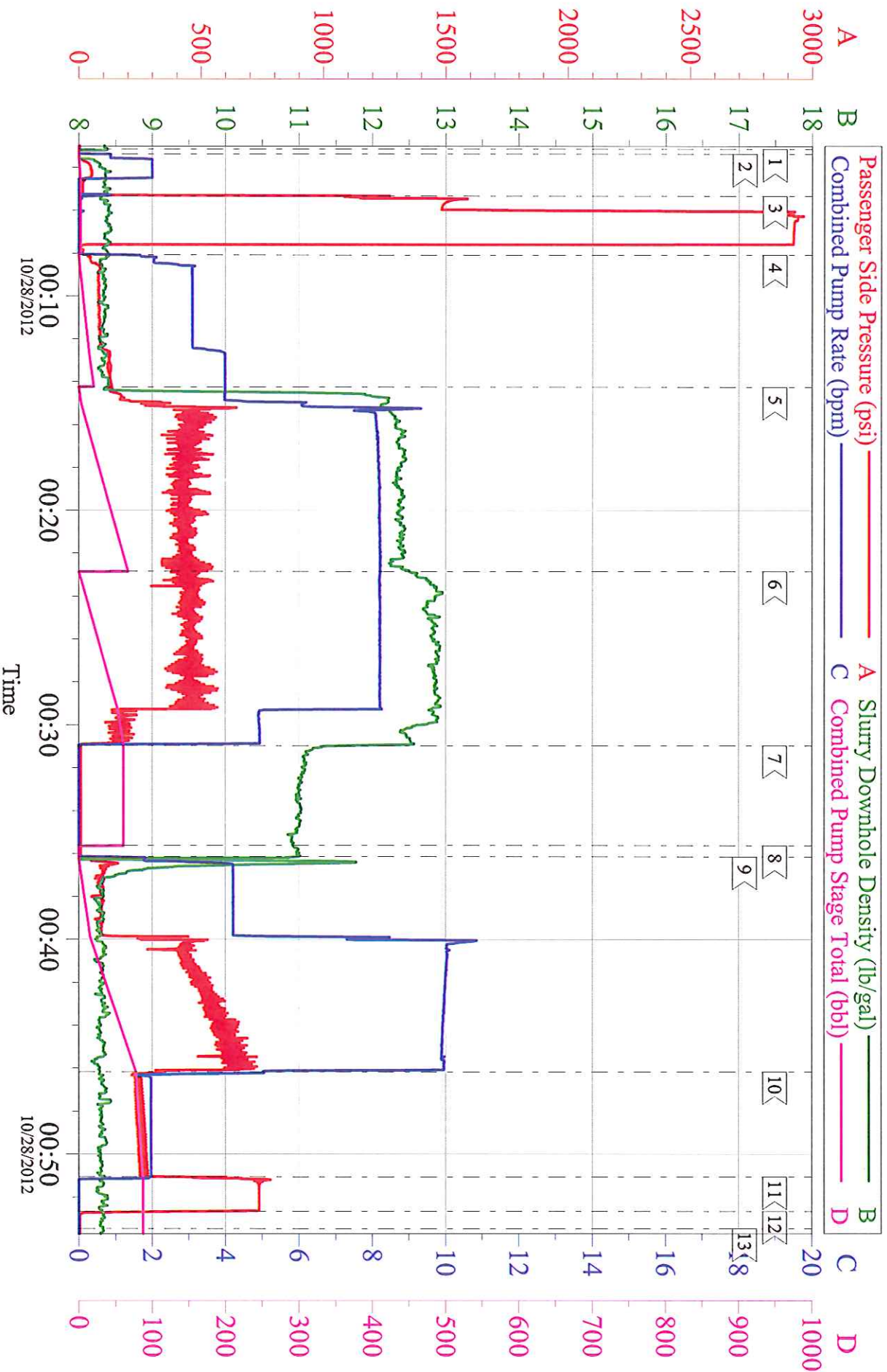
SURFACE



Customer: WPX ENERGY	Job Date: 28-Oct-2012	Sales Order #: 9844810
Well Description: RWF 424-36	Job Type: SURFACE	ADC Used: YES
Company Rep: RICK OAKS	Cement Supervisor: TROY ANGLESTEIN	Elite # 4: RUSTY WEAVER

WPX ENERGY - RWF 424-36

SURFACE



Customer: WPX ENERGY
Well Description: RWF 424-36
Company Rep: RICK OAKS

Job Date: 28-Oct-2012
Job Type: SURFACE
Cement Supervisor: TROY ANGLESTEIN

Sales Order #: 9844810
ADC Used: YES
Elite #: 4: RUSTY WEAVER