

**HALLIBURTON**

---

# **SUNDANCE ENERGY INC**

---

**HFE 14-22  
WATTENBERG  
Weld County , Colorado**

## **Cement Production Casing**

**16-Jun-2012**

### **Job Site Documents**

## Field Ticket

Field Ticket Number: 9593769		Field Ticket Date: Saturday, June 16, 2012	
<b>Bill To:</b> SUNDANCE ENERGY INC 633 17TH ST STE 1950 DENVER, CO 80202		<b>Job Name:</b> HFE <b>Order Type:</b> Streamline Order (ZOH) <b>Well Name:</b> HFE 14-22 <b>Company Code:</b> 1100 <b>Customer PO No.:</b> NA <b>Shipping Point:</b> Brighton, CO, USA <b>Sales Office:</b> Rocky Mountains BD <b>Well Type:</b> Gas <b>Well Category:</b> Development	
<b>Ship To:</b> SUNDANCE HFE 14-22,WELD HFE 14-22 2933213 S22 T4N R68W BERTHOUD, CO 80513			

Material	Description	QTY	UOM	Base Amt	Unit Amt	Gross Amount	Discount	Net Amount
7523	CMT PRODUCTION CASING BOM	1	JOB	0.00	0.00	0.00		0.00
16091	ZI - PUMPING CHARGE	1	EA	0.00	9,081.00	9,081.00	65%	3,178.35
	DEPTH	7808						
	FEET/METERS (FT/M)		FT					
432904	CMT, ROCKIES SG SETUP	1	EA			6,496.00	56.5%	2,825.45
432905	CMT, ROCKIES SG MILEAGE	58	MI			1,302.10	61.7%	498.72
	Number of Units	1						
432906	CMT, ROCKIES SG DELIVERY	1	TNM			2,556.83	63.25%	939.75
	NUMBER OF TONS	10.35						
528788	MUD FLUSH III	24	BBL	0.00	94.45	2,266.80	65%	793.38
452963	FRACCEM (TM) SYSTEM	200	SK			12,756.13	65.0%	4,464.64
101985045	CHEM, CLA-WEB - TOTE	5	GAL	0.00	474.30	2,371.50	65%	830.02
100007955	SHOE-FLT- 4 1/2 8RD - HI-PORT	1	EA	0.00	918.00	918.00	65%	321.30
100004752	CLR,FLT,4-1/2 8RD,9.5-13.5PPF,2-3/4	1	EA	0.00	700.00	700.00	65%	245.00
100004491	CTRZR ASSY,TURBO,API,4 1/2 CSG X 7 7/8	15	EA	0.00	166.00	2,490.00	65%	871.50
100004622	CLAMP - LIMIT - 4-1/2 - HINGED -	1	EA	0.00	44.20	44.20	65%	15.47
101241019	PLUG,CMTG,TOP,4 1/2,HWE,3.65 MIN/4.14 MA	1	EA	0.00	186.00	186.00	65%	65.10
100005045	KIT,HALL WELD-A	1	EA	0.00	74.30	74.30	65%	26.00
100004595	BSKT,CEM,4 1/2 CSG X 6 1/4,8 3/4 H	2	EA	0.00	390.00	780.00	65%	273.00

## Field Ticket

<b>Field Ticket Number:</b> 9593769	<b>Field Ticket Date:</b> Saturday, June 16, 2012
<b>Bill To:</b> SUNDANCE ENERGY INC 633 17TH ST STE 1950 DENVER, CO 80202	<b>Job Name:</b> HFE <b>Order Type:</b> Streamline Order (ZOH) <b>Well Name:</b> HFE 14-22 <b>Company Code:</b> 1100 <b>Customer PO No.:</b> NA <b>Shipping Point:</b> Brighton, CO, USA <b>Sales Office:</b> Rocky Mountains BD <b>Well Type:</b> Gas <b>Well Category:</b> Development
<b>Ship To:</b> SUNDANCE HFE 14-22,WELD HFE 14-22 2933213 S22 T4N R68W BERTHOUD, CO 80513	

Material	Description	QTY	UOM	Base Amt	Unit Amt	Gross Amount	Discount	Net Amount
100008028	SUGAR, GRANULATED, IMPERIAL	50	LB	0.00	6.44	322.00	65%	112.70
Halliburton Rep: BRANDON NIELSON				Totals USD		42,344.86	26,884.48	15,460.38

THIS OUTPUT DOES NOT INCLUDE TAXES. APPLICABLE SALES TAX WILL BE BILLED ON THE FINAL INVOICE.  
CUSTOMER HEREBY ACKNOWLEDGES RECEIPT OF THE MATERIALS AND SERVICES DESCRIBED ABOVE AND ON THE ATTACHED DOCUMENTS.

X \_\_\_\_\_ FIELD TICKET TOTAL: USD 15,460.38

Customer Signature

Was our HSE performance satisfactory? Y or N      Were you satisfied with our Equipment? Y or N      Were you satisfied with our people? Y or N  
(Health, Safety, Environment)

Comments

--

### The Road to Excellence Starts with Safety

Sold To #: 344834	Ship To #: 2933213	Quote #:	Sales Order #: 9593769
Customer: SUNDANCE ENERGY INC		Customer Rep: Rodgers, Dean	
Well Name: HFE		Well #: 14-22	API/UWI #: 05-123-35711-00
Field: WATTENBERG	City (SAP): BERTHOUD	County/Parish: Weld	State: Colorado
Lat: N 40.295 deg. OR N 40 deg. 17 min. 40.891 secs.		Long: W 104.996 deg. OR W -105 deg. 0 min. 14.789 secs.	
Contractor: Ensign		Rig/Platform Name/Num: 55	
Job Purpose: Cement Production Casing			
Well Type: Development Well		Job Type: Cement Production Casing	
Sales Person: AARON, WESLEY		Srv Supervisor: NIELSON, BRANDON	MBU ID Emp #: 479703

### Job Personnel

HES Emp Name	Exp Hrs	Emp #	HES Emp Name	Exp Hrs	Emp #	HES Emp Name	Exp Hrs	Emp #
BURGESS, CODY Alan	6.5	511446	NIELSON, BRANDON K	6.5	479703	PICKELL, CHRISTOPHER Lee	6.5	396838

### Equipment

HES Unit #	Distance-1 way	HES Unit #	Distance-1 way	HES Unit #	Distance-1 way	HES Unit #	Distance-1 way
10248062C	29 mile	10824253C	29 mile	10951212	29 mile		

### Job Hours

Date	On Location Hours	Operating Hours	Date	On Location Hours	Operating Hours	Date	On Location Hours	Operating Hours
6-16-12	6.5	1						

**TOTAL** Total is the sum of each column separately

### Job

### Job Times

Formation Name	Formation Depth (MD)	Top	Bottom	Form Type	Job depth MD	Job Depth TVD	Water Depth	Perforation Depth (MD)	From	To	Called Out	Date	Time	Time Zone
				BHST	7808. ft	7808. ft						16 - Jun - 2012	00:30	MST
											On Location	16 - Jun - 2012	03:45	MST
											Job Started	16 - Jun - 2012	08:00	MST
											Job Completed	16 - Jun - 2012	09:00	MST
											Departed Loc	16 - Jun - 2012	10:00	MST

### Well Data

Description	New / Used	Max pressure psig	Size in	ID in	Weight lbf/ft	Thread	Grade	Top MD ft	Bottom MD ft	Top TVD ft	Bottom TVD ft
Open Hole				7.875				595.	7824.	.	.
Production Casing	New		4.5	4.	11.6			.	7808.	.	.
Surface Casing	Used		8.625	8.097	24.		J-55	.	595.	.	.

### Sales/Rental/3<sup>rd</sup> Party (HES)

Description	Qty	Qty uom	Depth	Supplier
SHOE-FLT- 4 1/2 8RD - HI-PORT	1	EA		
CLR,FLT,4-1/2 8RD,9.5-13.5PPF,2-3/4	1	EA		
CTRZR ASSY,TURBO,API,4 1/2 CSG X 7 7/8	15	EA		
CLAMP - LIMIT - 4-1/2 - HINGED -	1	EA		
PLUG,CMTG,TOP,4 1/2,HWE,3.65 MIN/4.14 MA	1	EA		
KIT,HALL WELD-A	1	EA		
BSKT,CEM,4 1/2 CSG X 6 1/4,8 3/4 H	2	EA		

### Tools and Accessories

Type	Size	Qty	Make	Depth	Type	Size	Qty	Make	Depth	Type	Size	Qty	Make
Guide Shoe					Packer					Top Plug			
Float Shoe					Bridge Plug					Bottom Plug			
Float Collar					Retainer					SSR plug set			
Insert Float										Plug Container			
Stage Tool										Centralizers			

### Miscellaneous Materials

Gelling Agt	Conc	Surfactant	Conc	Acid Type	Qty	Conc	%
-------------	------	------------	------	-----------	-----	------	---

Treatment Fld		Conc		Inhibitor		Conc		Sand Type		Size		Qty	
<b>Fluid Data</b>													
<b>Stage/Plug #: 1</b>													
Fluid #	Stage Type	Fluid Name			Qty	Qty uom	Mixing Density lbm/gal	Yield ft <sup>3</sup> /sk	Mix Fluid Gal/sk	Rate bbl/min	Total Mix Fluid Gal/sk		
1	Clay Web Water Spacer				20.00	bbl	8.4	.0	.0	.0			
2	MUD FLUSH III	MUD FLUSH III - SBM (528788)			24.00	bbl	8.4	.0	1000.0	5.0			
3	CalyWeb Water Spacer				10.00	bbl	8.4	.0	.0	.0			
4	Fraccem 13.5#	FRACCEM (TM) SYSTEM (452963)			200.0	sacks	13.5	1.69	8.04	5.0	8.04		
8.04 Gal		FRESH WATER											
5	ClayWeb Water Displacement					bbl	8.34	.0	.0	7.0			
2.5 gal/Mgal		CLA-WEB - TOTE (101985045)											
<b>Calculated Values</b>				<b>Pressures</b>				<b>Volumes</b>					
Displacement		Shut In: Instant		Lost Returns		Cement Slurry		Pad					
Top Of Cement		5 Min		Cement Returns		Actual Displacement		Treatment					
Frac Gradient		15 Min		Spacers		Load and Breakdown		Total Job					
<b>Rates</b>													
Circulating		Mixing		Displacement		Avg. Job							
Cement Left In Pipe		Amount 0 ft		Reason		Shoe Joint							
Frac Ring # 1 @		ID	Frac ring # 2 @		ID	Frac Ring # 3 @		ID	Frac Ring # 4 @		ID		
The Information Stated Herein Is Correct						Customer Representative Signature							



*The Road to Excellence Starts with Safety*

Sold To #: 344834		Ship To #: 2933213		Quote #:		Sales Order #: 9593769	
Customer: SUNDANCE ENERGY INC				Customer Rep: Rodgers, Dean			
Well Name: HFE			Well #: 14-22		API/UWI #: 05-123-35711-00		
Field: WATTENBERG		City (SAP): BERTHOUD		County/Parish: Weld		State: Colorado	
Legal Description:							
Lat: N 40.295 deg. OR N 40 deg. 17 min. 40.891 secs.				Long: W 104.996 deg. OR W -105 deg. 0 min. 14.789 secs.			
Contractor: Ensign			Rig/Platform Name/Num: 55				
Job Purpose: Cement Production Casing						Ticket Amount:	
Well Type: Development Well			Job Type: Cement Production Casing				
Sales Person: AARON, WESLEY			Srvc Supervisor: NIELSON, BRANDON		MBU ID Emp #: 479703		

Activity Description	Date/Time	Cht #	Rate bbl/min	Volume bbl		Pressure psig		Comments
				Stage	Total	Tubing	Casing	
Test Lines	06/16/2012 08:01							TESTED LINES TO 3500 PSI NO VISIBLE LEAKS
Pump Spacer 1	06/16/2012 08:03		8	20			210.0	RIG WATER WITH CLAWEB
Pump Spacer 2	06/16/2012 08:09		8	24			330.0	RIG WATER WITH MUD FLUSH
Pump Spacer 1	06/16/2012 08:14		8	10			342.0	RIG WATER WITH CLAWEB
Pump Cement	06/16/2012 08:17		8	60			513.0	200 SKS FRACCEM MIXED @ 13.5 PPG WITH RIG WATER
Shutdown	06/16/2012 08:30							
Clean Lines	06/16/2012 08:30							
Drop Top Plug	06/16/2012 08:30							PLUG PRE LOADED WITNESSED BY COMPANY REP
Pump Displacement	06/16/2012 08:35		8	121			405.0	RIG WATER WITH CLAWEB
Bump Plug	06/16/2012 08:53		3				793.0	CALCULATED PRESSURE TO LAND WAS 647.
Check Floats	06/16/2012 08:55						1538.0	FLOATS HELD
End Job	06/16/2012 08:56							

*Water Analysis For Cement Mixing Water*

Company:	SUNDANCE ENERGY INC	Lease:	HFE	Well Name, Nbr:	HFE, 14-22
Rig Name/Nbr:	55	API No. /UWI		05-123-35711-00	
County:	Weld	State:	Colorado	Country:	United States of America

**FIELD TEST KIT**

**NOTE:** These tests are an indication of POTENTIAL contamination and are not conclusive.  
For more comprehensive results, a sample should be submitted to the Local Area Lab

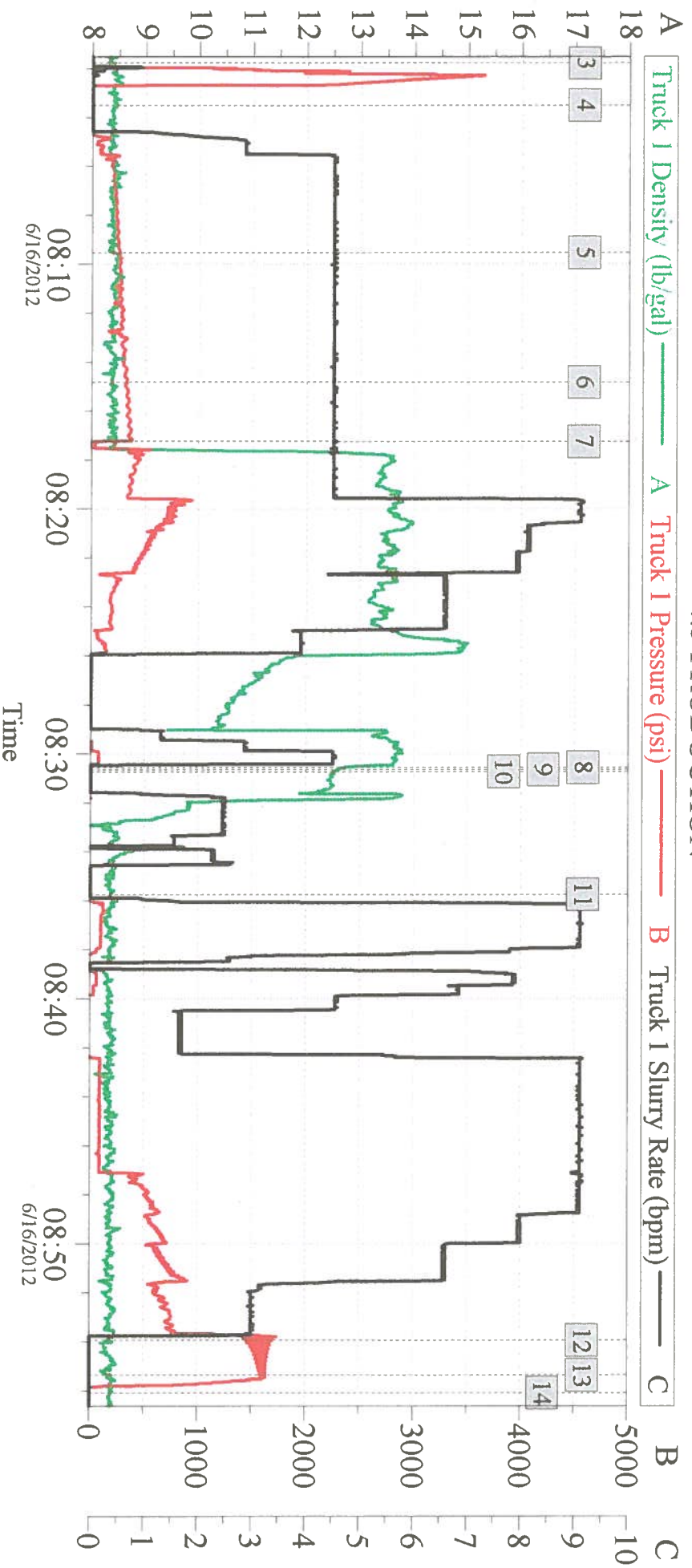
Date 16-Jun-2012  
Service Supervisor NIELSON, BRANDON

Ticket Number 9593769  
Water Source RIG WATER

Temperature 69 [*<80 F*]  
pH. 7 [*between 6-8 pH*]  
Specific Gravity                      [*1.000 - 1.005 see Chart*]  
Chart in Kit shows comparisons of: Chlorides 0 [*<3,000 ppm @ 1.004 S.G.*]  
Calcium [*<500 ppm @ 1.004 S.G.*]

PASS	FAIL	<b><u>Nessler's Nitrogen</u></b>	[ <i>Passing Parameters</i> ]
<input type="checkbox"/>	<input type="checkbox"/>	Color of Yellow <u>                    </u>	[ <i>&lt;4.5 ppm (mg/L)</i> ]
		<b><u>Tannin-Lignin</u></b>	
<input type="checkbox"/>	<input type="checkbox"/>	Color of Blue <u>                    </u>	[ <i>&lt;25.0 ppm</i> ]
		<b><u>Sulfate</u></b>	<u>&lt;200</u>
		Degree of Clarity <u>                    </u>	[ <i>200 ppm</i> ]
<input type="checkbox"/>	<input type="checkbox"/>	Black X Visible <u>                    </u>	[ <i>if NO &gt; 200 ppm = FAIL</i> ]
		<b><u>Iron (Fe)</u></b>	<u>0</u>
<input type="checkbox"/>	<input type="checkbox"/>	Degree of Orange <u>                    </u>	[ <i>&lt;20.0 ppm</i> ]

# SUNDANCE HFE 14-22 4.5 PRODUCTION



## Global Event Log

Intersection	T1P	Intersection	T1P	Intersection	T1P
1 Starting Job	07:26:34 0.000	2 Start Job	07:59:01 -23.33	3 Test Lines	08:01:46 -14.58
4 Pump Spacer 1	08:03:30 -15.27	5 Pump Spacer 2	08:09:32 258.6	6 Pump Spacer 1	08:14:50 325.7
7 Pump Cement	08:17:15 5.019	8 Shutdown	08:30:33 -49.11	9 Clean Lines	08:30:38 -49.59
10 Drop Top Plug	08:30:43 -49.59	11 Pump Displacement	08:35:45 -51.53	12 Bump Plug	08:53:57 1530
13 Other	08:55:21 1628	14 End Job	08:56:05 -63.55	15 Ending Job	09:01:45 -34.03

Customer:  
Well Description:

Job Date: 16-Jun-2012  
UWI:

Sales Order #: 9593769