



Animas Environmental Services, LLC

www.animasenvironmental.com

624 E. Comanche
Farmington, NM 87401
505-564-2281

Durango, Colorado
970-403-3084

Received 4/2/2013
Project #7680

March 27, 2013

Grant Gibbons
Kinder Morgan CO₂ Company LP
17801 US Highway 491
Cortez, Colorado 81321

**RE: Soil Confirmation Sampling Report
DC-11 Well Location
Dolores County, Colorado**

Dear Mr. Gibbons:

On March 14, 2013, Animas Environmental Services, LLC (AES) completed soil confirmation sampling at the Kinder Morgan CO₂ LP (KM) DC-11 well, located in Dolores County, Colorado.

1.0 Site Information

1.1 Location

Location – NW¼ SE¼, Section 15, T40N, R18W, Dolores County, Colorado

Well Head Latitude/Longitude – N37.73262 and W108.83427, respectively

Land Jurisdiction – Private

Figure 1. Topographic Site Location Map

Figure 2. Aerial Site Map and Sample Locations, March 2013

2.0 Soil Action Levels

Action levels for releases are outlined within the Colorado Oil and Gas Conservation Commission (COGCC) Rules 900 Series Exploration and Production (E&P) Waste Management. These rules are applicable only to E&P waste, as defined in §34-60-103(4.5), Colorado Revised Statutes (C.R.S.). As prescribed within the 900 Series, parameters for collected soil samples were analyzed per COGCC Table 910-1 (May 2011). Note that effective November 28, 2012, the Colorado Division of Public Health and the Environment (CDPHE) adopted U.S. Environmental Protection Agency's (USEPAs) Regional Screening Levels (RSLs) for residential and industrial exposure scenarios.

3.0 Soil Sampling

AES was initially contacted by Grant Gibbons, KM representative, on March 11, 2013, and on March 14, 2013, Heather Woods and Deborah Watson of AES completed the confirmation soil sampling field work. Sampling activities included collection of 14 discrete soil samples. Soil samples DC-11 C-1 through C-12 were collected within a 60 ft by 40 ft area within the location of a former sediment stockpile. Samples were collected on a 20 ft grid within this area. Sample DC-11 C-13 was collected within an area of former stained soils located along the western edge of the well location. In addition, a single background sample (DC-11 Background) was collected offsite and upgradient of the location.

The area was subdivided into 20 ft sections using a RT-314 Roll Tape. Sample locations were identified on the ground surface prior to sampling. Samples were collected with a combination of clean stainless steel spoons, shovels, and augers from depths between 0.2 ft and 0.5 ft below ground surface (bgs). Between samples, the sampling tools were decontaminated using a wash mixture of Alconox and water, and were rinsed three times with distilled water.

Latitude and longitude of each sample location was recorded in the field with a Garmin Etrex 20 Global Positioning System (GPS). Soils were observed to consist primarily of tan to brown lean clay to clayey sand (C-1 through C-13). The DC-11 Background sample consisted of brown, clayey sand. All soil samples collected during the sampling activities were submitted for laboratory analysis.

3.1 Laboratory Analyses

The soil samples collected for laboratory analysis were placed into new, clean, laboratory-supplied containers, which were then labeled, placed on ice, and logged onto a sample chain of custody record. Samples were maintained on ice until delivery to the analytical laboratory, Hall Environmental Analysis Laboratory (Hall) in Albuquerque, New Mexico. The soil sample was laboratory analyzed per COGCC Table 910-1 requirements, which included the following:

- Volatile Organic Compounds (VOCs) per U.S. Environmental Protection Agency (USEPA) Methods 8015/8021: *total petroleum hydrocarbons (TPH), benzene, toluene, ethylbenzene, and total xylenes (BTEX)*;
- Polynuclear Aromatic Hydrocarbons (PAHs) per USEPA Method 8270C: *acenaphtehene, anthracene, benzo(A)anthracene, benzo(B)fluoranthene, benzo(K)fluoranthene, benzo(A)pyrene, chrysene, dibenzo(A,H)anthracene, fluoranthene, fluorine, indeno(1,2,3,C,D)pyrene, naphthalene, and pyrene*;

- Inorganics: *electrical conductivity, sodium adsorption ratio (SAR), and pH; and*
- Metals per USEPA Method 6010B and 7471: *arsenic, barium, cadmium, chromium (III), chromium (VI), copper, lead, mercury, nickel, selenium, silver, and zinc.*

3.3 Laboratory Analytical Results

Laboratory analytical results reported **above** detection limits are as follows:

VOCs:

- Toluene: C-1 (0.0072 mg/kg).

Inorganics:

- Electrical Conductivity ranged from 0.41 mmhos/cm in DC-11 Background to 0.89 mmhos/cm in C-5 and C-7;
- SAR ranged from 0.090 in DC-11 Background sample up to 5.3 in C-1; and
- pH was reported from 7.7 (DC-11 Background) up to 8.5 (C-5).

Metals:

- Arsenic: Three samples had reported arsenic concentrations above laboratory detection limits of 1.3 mg/kg and 3.1 mg/kg, including C-7 (1.9 mg/kg), C-12 (1.5 mg/kg), and DC-11 Background (3.8 mg/kg);
- Barium: All samples had reported concentrations above laboratory detection limits and ranged from 130 mg/kg (DC-11 Background) up to 370 mg/kg (C-9);
- Cadmium: Two samples had reported cadmium concentrations above laboratory detection limits, including C-5 (0.095 mg/kg) and C-9 (0.076 mg/kg);
- Chromium (III): All samples had reported concentrations above laboratory detection limits, and concentrations ranged from 4.1 mg/kg (C-1) up to 12 mg/kg (C-2, C-3, C-4, and C-11);
- Copper: All samples had reported concentrations above laboratory detection limits and ranged from 3.4 mg/kg (C-7) up to 9.2 mg/kg (C-5);
- Lead: Concentrations were reported above laboratory detection limits in all samples and concentrations ranged from 1.2 mg/kg (C-7) up to 11 mg/kg (C-5);
- Mercury: All samples had reported concentrations above laboratory detection limits and ranged from 0.0078 mg/kg (DC-11 Background) up to 0.026 mg/kg (C-5 and C-9);
- Nickel: All samples had reported concentrations above laboratory detection limits, and concentrations ranged from 5.4 mg/kg (C-7) up to 13.0 mg/kg (C-5);
- Zinc: All samples had reported concentrations above laboratory detection limits. Concentrations of zinc ranged from 16 mg/kg (C-7) up to 43 mg/kg (C-5).

Results are presented in Tables 1 through 4, and the laboratory analytical report is attached.

4.0 Conclusions

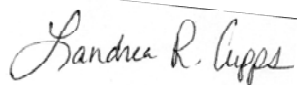
On March 14, 2013, AES conducted confirmation soil sampling at the KM DC-11 well, located in Dolores County, Colorado. Soil sampling consisted of collection of 14 discrete soil samples from depths between 0.2 to 0.5 feet bgs. Onsite samples (DC-11 C-1 through C-13) were collected at predetermined locations at the well location. A single background sample was collected offsite (DC-11 Background).

Concentrations of BTEX, TPH, PAHs, barium, cadmium, chromium (III and VI), copper, lead, mercury, nickel, selenium, silver, zinc, electrical conductivity, SAR, and pH were reported **below** applicable COGCC standards.

Arsenic concentrations exceeded the COGCC residential standard of 0.39 mg/kg in three samples and exceeded the industrial standard of 1.6 mg/kg in two samples. The highest arsenic concentration was reported in DC-11 Background with 3.8 mg/kg. Note that arsenic laboratory detection limits (1.3 mg/kg, 3.1 mg/kg, and 6.3 mg/kg) were reported above the COGCC residential standard of 0.39 mg/kg. Previous work experience in the general area of this location and throughout Colorado suggest that elevated and widely varying background arsenic concentrations (greater than 0.39 mg/kg) occur naturally due to weathering and erosion of bedrock and soil.

If you have any questions about this report or site conditions, please do not hesitate to contact Deborah Watson at (505) 564-2281.

Sincerely,



Landrea Cupps
Environmental Scientist



Elizabeth McNally, PE

Attachments:

Figure 1. Topographic Site Location Map

Figure 2. Aerial Site Map and Sample Locations, March 2013

Table 1. Summary of Soil Organics Analytical Results

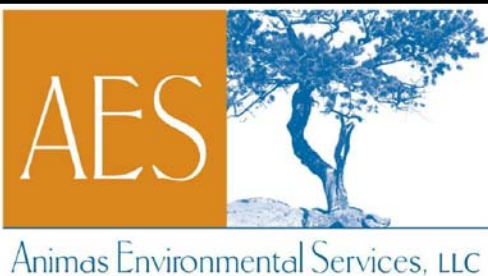
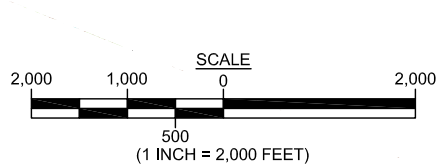
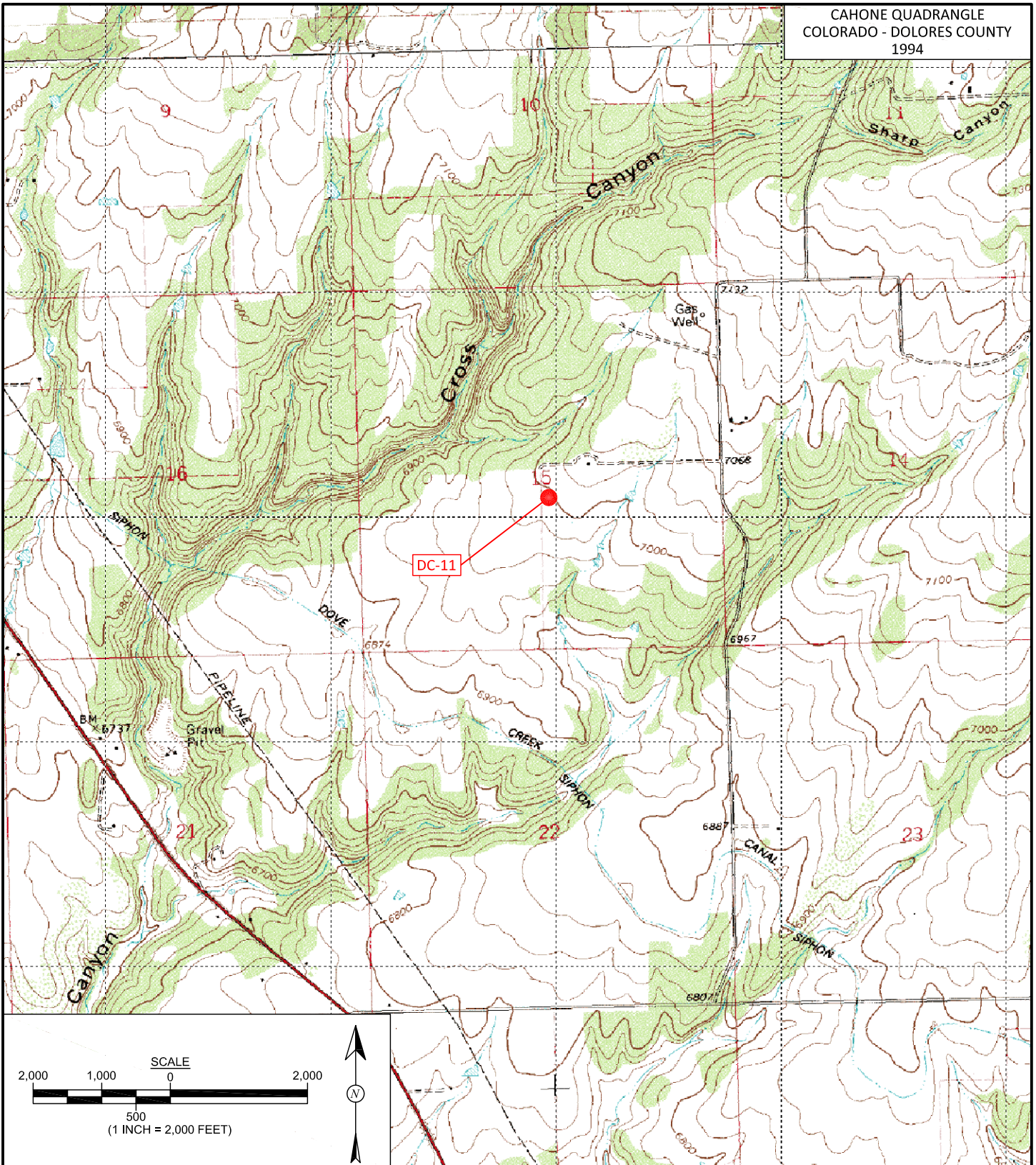
Table 2. Summary of Soil Polynuclear Aromatic Hydrocarbons Analytical Results

Table 3. Summary of Soil Inorganics Results

Table 4. Summary of Soil Metals Analytical Results

Hall Laboratory Analytical Report 1303601

C:\Dropbox\2013 Projects\Kinder Morgan\DC-11 folder\KM DC-11 Confirmation Sampling Report
032713.docx



DRAWN BY:
C. Lameman

DATE DRAWN:
March 25, 2013

REVISIONS BY:
C. Lameman

DATE REVISED:
March 25, 2013

CHECKED BY:
D. Watson

DATE CHECKED:
March 25, 2013

APPROVED BY:
E. McNally

DATE APPROVED:
March 25, 2013

FIGURE 1

TOPOGRAPHIC SITE LOCATION MAP
KINDER MORGAN CO₂ COMPANY LP
DC-11

NW $\frac{1}{4}$ SE $\frac{1}{4}$, SECTION 15, T40N, R18W
DOLORES COUNTY, COLORADO
N37.73262, W108.83427

Sample Collection Summary					
Sample ID	Date	Depth (ft)	Latitude	Longitude	
DC-11 C-1	3/14/13	0.2 - 0.5	37.73221	-108.83396	
DC-11 C-2	3/14/13	0.2 - 0.5	37.73217	-108.83398	
DC-11 C-3	3/14/13	0.2 - 0.5	37.73212	-108.83398	
DC-11 C-4	3/14/13	0.2 - 0.5	37.73207	-108.83397	
DC-11 C-5	3/14/13	0.2 - 0.5	37.73223	-108.83392	
DC-11 C-6	3/14/13	0.2 - 0.5	37.73218	-108.83392	
DC-11 C-7	3/14/13	0.2 - 0.5	37.73211	-108.83391	
DC-11 C-8	3/14/13	0.2 - 0.5	37.73209	-108.83392	
DC-11 C-9	3/14/13	0.2 - 0.5	37.73223	-108.83385	
DC-11 C-10	3/14/13	0.2 - 0.5	37.73218	-108.83384	
DC-11 C-11	3/14/13	0.2 - 0.5	37.73212	-108.83383	
DC-11 C-12	3/14/13	0.2 - 0.5	37.73208	-108.83384	
DC-11 C-13	3/14/13	0.2 - 0.5	37.73242	-108.83478	
DC-11 C-BACKGROUND	3/14/13	0.2 - 0.5	37.73215	-108.83331	

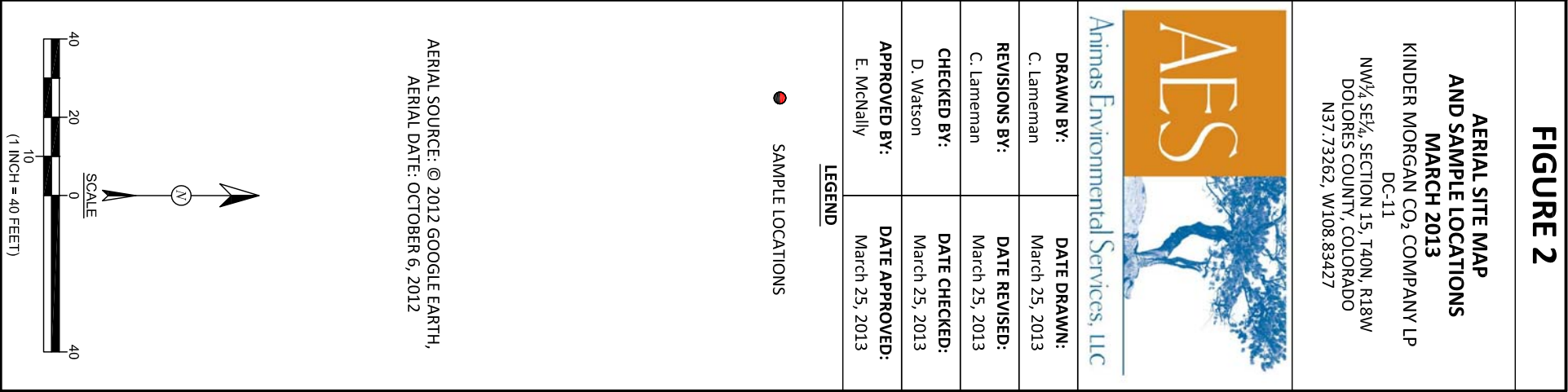
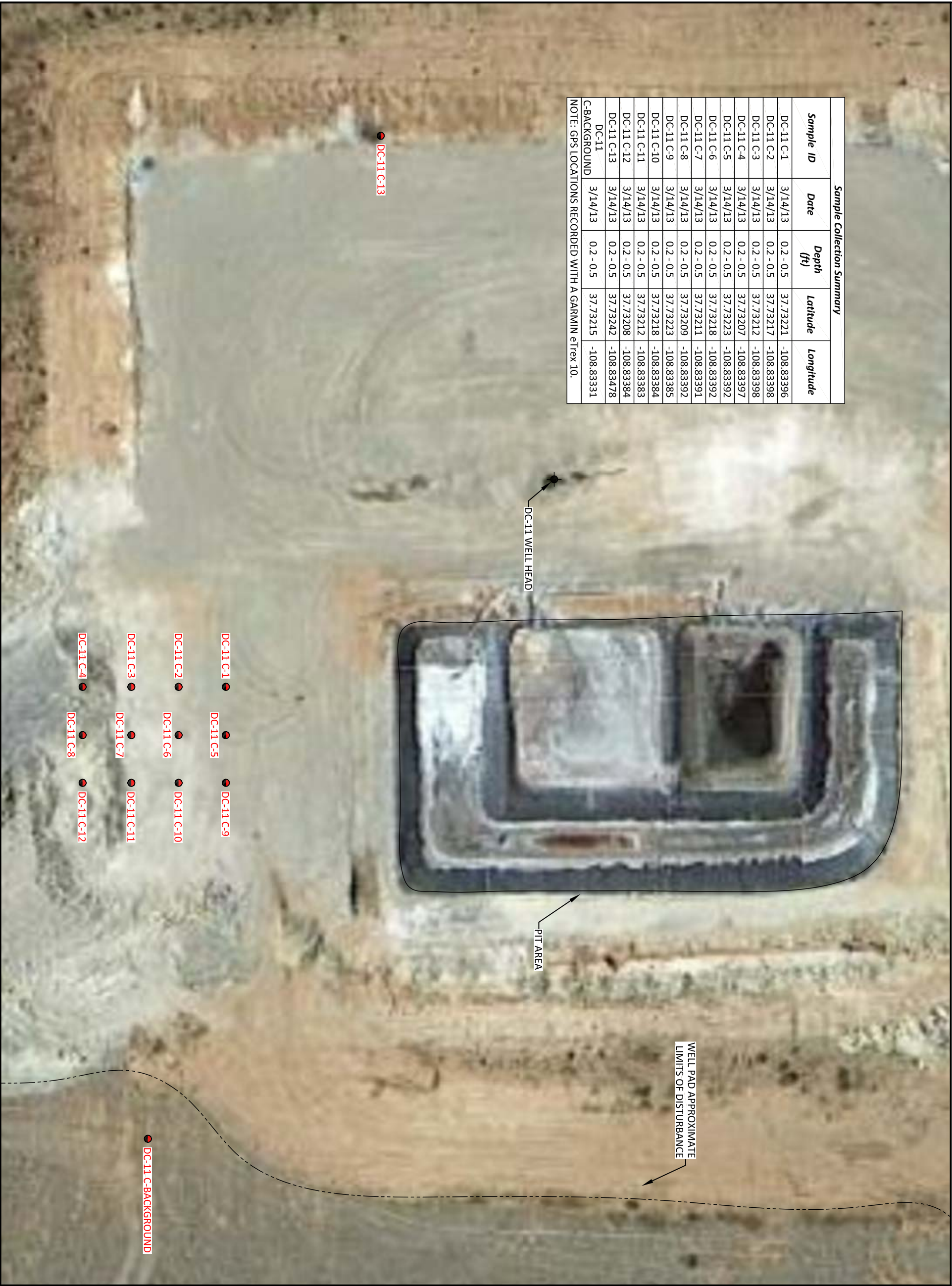


TABLE 1
Summary of Soil Organics Analytical Results
K.M. DC-11
Dolores County, Colorado

<i>Sample ID</i>	<i>Date Sampled</i>	<i>Benzene (mg/kg)</i>	<i>Toluene (mg/kg)</i>	<i>Ethylbenzene (mg/kg)</i>	<i>Total Xylenes (mg/kg)</i>	<i>TPH-MRO (mg/kg)</i>	<i>TPH-GRO (mg/kg)</i>	<i>TPH-DRO (mg/kg)</i>
Analytical Method		8021B				8015B		
COGCC STANDARD		0.17	85	100	175	500		
DC-11 C-1	14-Mar-13	<0.048	0.0072	<0.048	<0.096	<51	<4.8	<10
DC-11 C-2	14-Mar-13	<0.047	<0.047	<0.047	<0.095	<50	<4.7	<10
DC-11 C-3	14-Mar-13	<0.047	<0.047	<0.047	<0.094	<48	<4.7	<9.7
DC-11 C-4	14-Mar-13	<0.047	<0.047	<0.047	<0.094	<49	<4.7	<9.7
DC-11 C-5	14-Mar-13	<0.047	<0.047	<0.047	<0.094	<52	<4.7	<10
DC-11 C-6	14-Mar-13	<0.048	<0.048	<0.048	<0.096	<51	<4.8	<10
DC-11 C-7	14-Mar-13	<0.047	<0.047	<0.047	<0.094	<48	<4.7	<9.7
DC-11 C-8	14-Mar-13	<0.047	<0.047	<0.047	<0.095	<48	<4.7	<9.6
DC-11 C-9	14-Mar-13	<0.047	<0.047	<0.047	<0.095	<50	<4.7	<9.9
DC-11 C-10	14-Mar-13	<0.048	<0.048	<0.048	<0.096	<48	<4.8	<9.5
DC-11 C-11	14-Mar-13	<0.048	<0.048	<0.048	<0.096	<52	<4.8	<10
DC-11 C-12	14-Mar-13	<0.047	<0.047	<0.047	<0.094	<49	<4.7	<9.9
DC-11 C-13	14-Mar-13	<0.048	<0.048	<0.048	<0.096	<48	<4.8	<9.7
DC-11 Background	14-Mar-13	<0.048	<0.048	<0.048	<0.096	<52	<4.8	<10

TABLE 2
Summary of Soil Polynuclear Aromatic Hydrocarbons Analytical Results
K.M. DC-11
Dolores County, Colorado

<i>Sample ID</i>	<i>Date Sampled</i>	<i>Acenaphthene (mg/kg)</i>	<i>Anthracene (mg/kg)</i>	<i>Benzo(A)anthracene (mg/kg)</i>	<i>Benzo(B)fluoranthene (mg/kg)</i>	<i>Benzo(K)fluoranthene (mg/kg)</i>	<i>Benzo(A)pyrene (mg/kg)</i>	<i>Chrysene (mg/kg)</i>	<i>Dibenzo(A,H)anthracene (mg/kg)</i>	<i>Fluoranthene (mg/kg)</i>	<i>Fluorene (mg/kg)</i>	<i>Indeno(1,2,3,C,D)pyrene (mg/kg)</i>	<i>Naphthalene (mg/kg)</i>	<i>Pyrene (mg/kg)</i>
Analytical Method		8270C	8270C	8270C	8270C	8270C	8270C	8270C	8270C	8270C	8270C	8270C	8270C	8270C
COGCC STANDARD		1,000	1,000	0.22	0.22	2.2	0.022	22	0.022	1,000	1,000	0.22	23	1,000
DC-11 C-1	14-Mar-13	<0.020	<0.020	<0.020	<0.020	<0.020	<0.020	<0.020	<0.020	<0.020	<0.020	<0.020	<0.020	<0.020
DC-11 C-2	14-Mar-13	<0.020	<0.020	<0.020	<0.020	<0.020	<0.020	<0.020	<0.020	<0.020	<0.020	<0.020	<0.020	<0.020
DC-11 C-3	14-Mar-13	<0.020	<0.020	<0.020	<0.020	<0.020	<0.020	<0.020	<0.020	<0.020	<0.020	<0.020	<0.020	<0.020
DC-11 C-4	14-Mar-13	<0.020	<0.020	<0.020	<0.020	<0.020	<0.020	<0.020	<0.020	<0.020	<0.020	<0.020	<0.020	<0.020
DC-11 C-5	14-Mar-13	<0.020	<0.020	<0.020	<0.020	<0.020	<0.020	<0.020	<0.020	<0.020	<0.020	<0.020	<0.020	<0.020
DC-11 C-6	14-Mar-13	<0.020	<0.020	<0.020	<0.020	<0.020	<0.020	<0.020	<0.020	<0.020	<0.020	<0.020	<0.020	<0.020
DC-11 C-7	14-Mar-13	<0.020	<0.020	<0.020	<0.020	<0.020	<0.020	<0.020	<0.020	<0.020	<0.020	<0.020	<0.020	<0.020
DC-11 C-8	14-Mar-13	<0.020	<0.020	<0.020	<0.020	<0.020	<0.020	<0.020	<0.020	<0.020	<0.020	<0.020	<0.020	<0.020
DC-11 C-9	14-Mar-13	<0.020	<0.020	<0.020	<0.020	<0.020	<0.020	<0.020	<0.020	<0.020	<0.020	<0.020	<0.020	<0.020
DC-11 C-10	14-Mar-13	<0.020	<0.020	<0.020	<0.020	<0.020	<0.020	<0.020	<0.020	<0.020	<0.020	<0.020	<0.020	<0.020
DC-11 C-11	14-Mar-13	<0.020	<0.020	<0.020	<0.020	<0.020	<0.020	<0.020	<0.020	<0.020	<0.020	<0.020	<0.020	<0.020
DC-11 C-12	14-Mar-13	<0.020	<0.020	<0.020	<0.020	<0.020	<0.020	<0.020	<0.020	<0.020	<0.020	<0.020	<0.020	<0.020
DC-11 C-13	14-Mar-13	<0.020	<0.020	<0.020	<0.020	<0.020	<0.020	<0.020	<0.020	<0.020	<0.020	<0.020	<0.020	<0.020
DC-11 Background	14-Mar-13	<0.020	<0.020	<0.020	<0.020	<0.020	<0.020	<0.020	<0.020	<0.020	<0.020	<0.020	<0.020	<0.020

TABLE 3
Summary of Soil Inorganics Analytical Results
K.M. DC-11
Dolores County, Colorado

<i>Sample ID</i>	<i>Date Sampled</i>	<i>Electrical Conductivity (mmhos/cm)</i>	<i>Sodium Absorption Ratio</i>	<i>pH</i>
COGCC STANDARD		<4	<12	6-9
DC-11 C-1	14-Mar-13	0.85	5.3	8.3
DC-11 C-2	14-Mar-13	0.83	1.8	8.2
DC-11 C-3	14-Mar-13	0.60	0.81	8.2
DC-11 C-4	14-Mar-13	0.74	0.67	8.1
DC-11 C-5	14-Mar-13	0.89	5.1	8.5
DC-11 C-6	14-Mar-13	0.60	1.3	8.4
DC-11 C-7	14-Mar-13	0.89	2.3	8.2
DC-11 C-8	14-Mar-13	0.74	2.9	8.2
DC-11 C-9	14-Mar-13	0.67	4.6	8.3
DC-11 C-10	14-Mar-13	0.80	1.9	8.2
DC-11 C-11	14-Mar-13	0.56	0.53	8.1
DC-11 C-12	14-Mar-13	0.67	2.8	8.1
DC-11 C-13	14-Mar-13	0.45	0.45	8.2
DC-11 Background	14-Mar-13	0.41	0.090	7.7

TABLE 4
Summary of Soil Metals Analytical Results
K.M. DC-11
Dolores County, Colorado

Sample ID	Sample Date	Arsenic* (mg/kg)	Barium (mg/kg)	Cadmium (mg/kg)	Chromium (III) (mg/kg)	Chromium (VI) (mg/kg)	Copper (mg/kg)	Lead (mg/kg)	Mercury (mg/kg)	Nickel (mg/kg)	Selenium (mg/kg)	Silver (mg/kg)	Zinc (mg/kg)
Analytical Method		6010B	6010B	6010B	6010B	3060A/7196A	6010B	6010B	7471	6010B	6010B	6010B	6010B
COGCC STANDARD		0.39**	15,000	70	120,000	23	3,100	400	23	1,600	390	390	23,000
DC-11 C-1	14-Mar-13	<1.3	210	<0.20	4.1	<2.0	3.5	6.5	0.018	8.8	<5.0	<0.50	31
DC-11 C-2	14-Mar-13	<3.1	190	<0.50	12	<2.0	6.9	4.3	0.016	10	<12	<1.2	32
DC-11 C-3	14-Mar-13	<3.1	180	<0.50	12	<2.0	5.8	4.2	0.013	10	<12	<1.2	30
DC-11 C-4	14-Mar-13	<3.1	180	<0.50	12	<2.0	5.7	4.0	0.013	9.6	<12	<1.2	29
DC-11 C-5	14-Mar-13	<1.3	320	0.095	6.2	<2.0	9.2	11	0.026	13.0	<5.0	<0.50	43
DC-11 C-6	14-Mar-13	<1.3	220	<0.20	8.9	<2.0	4.7	2.0	0.014	7.2	<5.0	<0.50	21
DC-11 C-7	14-Mar-13	1.9	280	<0.10	6.0	<2.0	3.4	1.2	0.013	5.4	<2.5	<0.25	16
DC-11 C-8	14-Mar-13	<3.1	260	<0.50	7.0	<2.0	4.2	4.4	0.013	9.8	<12	<1.2	33
DC-11 C-9	14-Mar-13	<1.3	370	0.076	7.0	<2.0	7.4	8.1	0.026	12	<5.0	<0.50	39
DC-11 C-10	14-Mar-13	<6.3	210	<1.0	11	<2.0	6.6	4.3	0.016	10	<25	<2.5	29
DC-11 C-11	14-Mar-13	<3.1	160	<0.50	12	<2.0	6.6	4.6	0.012	10	<13	<1.3	33
DC-11 C-12	14-Mar-13	1.5	140	<0.20	7.5	<2.0	6.1	5.3	0.022	9.6	<5.0	<0.50	33
DC-11 C-13	14-Mar-13	<3.1	140	<0.50	11	<2.0	6.4	4.4	0.0099	8.9	<12	<1.2	27
DC-11 Background	14-Mar-13	3.8	130	<0.50	11	<2.0	5.7	3.3	0.0078	8.5	<12	<1.2	29

< Non detect concentrations reported below the standard reporting limits

* Non detect arsenic values reported below the laboratory method detection limits.

** COGCC and USEPA RSL Residential 0.39 mg/kg; USEPA RSL Industrial 1.6 mg/kg



Hall Environmental Analysis Laboratory
4901 Hawkins NE
Albuquerque, NM 87109
TEL: 505-345-3975 FAX: 505-345-4107
Website: www.hallenvironmental.com

March 25, 2013

Debbie Watson

Animas Environmental Services

624 East Comanche

Farmington, NM 87401

TEL: (505) 486-4071

FAX:

RE: K.M. DC-11

OrderNo.: 1303601

Dear Debbie Watson:

Hall Environmental Analysis Laboratory received 14 sample(s) on 3/15/2013 for the analyses presented in the following report.

These were analyzed according to EPA procedures or equivalent. To access our accredited tests please go to www.hallenvironmental.com or the state specific web sites. See the sample checklist and/or the Chain of Custody for information regarding the sample receipt temperature and preservation. Data qualifiers or a narrative will be provided if the sample analysis or analytical quality control parameters require a flag. All samples are reported as received unless otherwise indicated. Lab measurement of analytes considered field parameters that require analysis within 15 minutes of sampling such as pH and residual chlorine are qualified as being analyzed outside of the recommended holding time.

Please don't hesitate to contact HEAL for any additional information or clarifications.

Sincerely,

A handwritten signature in black ink, appearing to read "Andy Freeman", is written over a horizontal line.

Andy Freeman

Laboratory Manager

4901 Hawkins NE

Albuquerque, NM 87109

Hall Environmental Analysis Laboratory, Inc.

Analytical Report

Lab Order 1303601

Date Reported: 3/25/2013

CLIENT: Animas Environmental Services

Client Sample ID: DC-11 C-1

Project: K.M. DC-11

Collection Date: 3/14/2013 8:12:00 PM

Lab ID: 1303601-001

Matrix: SOIL

Received Date: 3/15/2013 10:00:00 AM

Analyses	Result	MDL	RL	Qual	Units	DF	Date Analyzed
----------	--------	-----	----	------	-------	----	---------------

EPA METHOD 8015B: DIESEL RANGE ORGANICS

Analyst: **MMD**

Diesel Range Organics (DRO)	ND	6.4	10		mg/Kg	1	3/16/2013 6:06:49 PM
Motor Oil Range Organics (MRO)	ND	51	51		mg/Kg	1	3/16/2013 6:06:49 PM
Surr: DNOP	106	0	72.4-120		%REC	1	3/16/2013 6:06:49 PM

EPA METHOD 8015B: GASOLINE RANGE

Analyst: **NSB**

Gasoline Range Organics (GRO)	ND	0.93	4.8		mg/Kg	1	3/18/2013 3:45:05 PM
Surr: BFB	102	0	84-116		%REC	1	3/18/2013 3:45:05 PM

EPA METHOD 8021B: VOLATILES

Analyst: **NSB**

Benzene	ND	0.0030	0.048		mg/Kg	1	3/18/2013 3:45:05 PM
Toluene	0.0072	0.0031	0.048	J	mg/Kg	1	3/18/2013 3:45:05 PM
Ethylbenzene	ND	0.0034	0.048		mg/Kg	1	3/18/2013 3:45:05 PM
Xylenes, Total	ND	0.011	0.096		mg/Kg	1	3/18/2013 3:45:05 PM
Surr: 4-Bromofluorobenzene	101	0	80-120		%REC	1	3/18/2013 3:45:05 PM

EPA METHOD 7471: MERCURY

Analyst: **TMG**

Mercury	0.018	0.0016	0.033	J	mg/kg	1	3/20/2013 1:07:02 PM
---------	-------	--------	-------	---	-------	---	----------------------

EPA METHOD 6010B: SOIL METALS

Analyst: **JLF**

Arsenic	ND	1.3	5.0		mg/Kg	2	3/22/2013 6:06:31 PM
Barium	210	0.30	0.50		mg/Kg	5	3/24/2013 10:09:02 AM
Cadmium	ND	0.054	0.20		mg/Kg	2	3/22/2013 6:06:31 PM
Chromium	4.1	0.24	0.60		mg/Kg	2	3/22/2013 6:06:31 PM
Copper	3.5	0.46	0.60		mg/Kg	2	3/22/2013 6:06:31 PM
Lead	6.5	0.44	0.50		mg/Kg	2	3/22/2013 6:06:31 PM
Nickel	8.8	0.33	1.0		mg/Kg	2	3/22/2013 6:06:31 PM
Selenium	ND	2.8	5.0		mg/Kg	2	3/24/2013 9:52:21 AM
Silver	ND	0.071	0.50		mg/Kg	2	3/22/2013 6:06:31 PM
Zinc	31	2.0	5.0		mg/Kg	2	3/22/2013 6:06:31 PM

SAR SOLUBLE CATIONS

Analyst: **ELS**

Calcium	100	0.49	1.0		mg/L	1	3/24/2013 11:02:00 AM
Magnesium	32	0.34	1.0		mg/L	1	3/24/2013 11:02:00 AM
Sodium	240	0.88	1.0		mg/L	1	3/24/2013 11:02:00 AM
Sodium Adsorption Ratio	5.3	0	0			1	3/24/2013 11:02:00 AM

EPA METHOD 8270C: PAHS

Analyst: **JDC**

Naphthalene	ND	0.0044	0.020		mg/Kg	1	3/16/2013 6:20:33 PM
Acenaphthene	ND	0.0058	0.020		mg/Kg	1	3/16/2013 6:20:33 PM
Fluorene	ND	0.0041	0.020		mg/Kg	1	3/16/2013 6:20:33 PM
Anthracene	ND	0.0032	0.020		mg/Kg	1	3/16/2013 6:20:33 PM
Fluoranthene	ND	0.0036	0.020		mg/Kg	1	3/16/2013 6:20:33 PM
Pyrene	ND	0.0049	0.020		mg/Kg	1	3/16/2013 6:20:33 PM
Benz(a)anthracene	ND	0.0057	0.020		mg/Kg	1	3/16/2013 6:20:33 PM
Chrysene	ND	0.0038	0.020		mg/Kg	1	3/16/2013 6:20:33 PM

Qualifiers:

- * Value exceeds Maximum Contaminant Level.
- E Value above quantitation range
- J Analyte detected below quantitation limits
- P Sample pH greater than 2
- RL Reporting Detection Limit

- B Analyte detected in the associated Method Blank
- H Holding times for preparation or analysis exceeded
- ND Not Detected at the Reporting Limit
- R RPD outside accepted recovery limits
- S Spike Recovery outside accepted recovery limits

Hall Environmental Analysis Laboratory, Inc.**CLIENT:** Animas Environmental Services**Client Sample ID:** DC-11 C-1**Project:** K.M. DC-11**Collection Date:** 3/14/2013 8:12:00 PM**Lab ID:** 1303601-001**Matrix:** SOIL**Received Date:** 3/15/2013 10:00:00 AM

Analyses	Result	MDL	RL	Qual	Units	DF	Date Analyzed
----------	--------	-----	----	------	-------	----	---------------

EPA METHOD 8270C: PAHS

Analyst: JDC

Benzo(b)fluoranthene	ND	0.0048	0.020		mg/Kg	1	3/16/2013 6:20:33 PM
Benzo(k)fluoranthene	ND	0.0058	0.020		mg/Kg	1	3/16/2013 6:20:33 PM
Benzo(a)pyrene	ND	0.0039	0.020		mg/Kg	1	3/16/2013 6:20:33 PM
Dibenz(a,h)anthracene	ND	0.0039	0.020		mg/Kg	1	3/16/2013 6:20:33 PM
Indeno(1,2,3-cd)pyrene	ND	0.0079	0.020		mg/Kg	1	3/16/2013 6:20:33 PM
Surr: Benzo(e)pyrene	83.4	0	44.9-129		%REC	1	3/16/2013 6:20:33 PM
Surr: N-hexadecane	86.1	0	45.4-126		%REC	1	3/16/2013 6:20:33 PM

CONDUCTANCE

Analyst: IDC

Specific Conductance	850	0	1.0		µmhos/c	1	3/22/2013 3:05:00 PM
----------------------	-----	---	-----	--	---------	---	----------------------

Qualifiers:

- * Value exceeds Maximum Contaminant Level.
- E Value above quantitation range
- J Analyte detected below quantitation limits
- P Sample pH greater than 2
- RL Reporting Detection Limit

- B Analyte detected in the associated Method Blank
- H Holding times for preparation or analysis exceeded
- ND Not Detected at the Reporting Limit
- R RPD outside accepted recovery limits
- S Spike Recovery outside accepted recovery limits

Hall Environmental Analysis Laboratory, Inc.

Analytical Report

Lab Order 1303601

Date Reported: 3/25/2013

CLIENT: Animas Environmental Services

Client Sample ID: DC-11 C-2

Project: K.M. DC-11

Collection Date: 3/14/2013 8:07:00 PM

Lab ID: 1303601-002

Matrix: SOIL

Received Date: 3/15/2013 10:00:00 AM

Analyses	Result	MDL	RL	Qual	Units	DF	Date Analyzed
----------	--------	-----	----	------	-------	----	---------------

EPA METHOD 8015B: DIESEL RANGE ORGANICS

Analyst: **MMD**

Diesel Range Organics (DRO)	ND	6.2	10		mg/Kg	1	3/16/2013 6:28:45 PM
Motor Oil Range Organics (MRO)	ND	50	50		mg/Kg	1	3/16/2013 6:28:45 PM
Surr: DNOP	111	0	72.4-120		%REC	1	3/16/2013 6:28:45 PM

EPA METHOD 8015B: GASOLINE RANGE

Analyst: **NSB**

Gasoline Range Organics (GRO)	ND	0.92	4.7		mg/Kg	1	3/18/2013 4:15:07 PM
Surr: BFB	91.0	0	84-116		%REC	1	3/18/2013 4:15:07 PM

EPA METHOD 8021B: VOLATILES

Analyst: **NSB**

Benzene	ND	0.0029	0.047		mg/Kg	1	3/18/2013 4:15:07 PM
Toluene	ND	0.0030	0.047		mg/Kg	1	3/18/2013 4:15:07 PM
Ethylbenzene	ND	0.0033	0.047		mg/Kg	1	3/18/2013 4:15:07 PM
Xylenes, Total	ND	0.011	0.095		mg/Kg	1	3/18/2013 4:15:07 PM
Surr: 4-Bromofluorobenzene	98.5	0	80-120		%REC	1	3/18/2013 4:15:07 PM

EPA METHOD 7471: MERCURY

Analyst: **TMG**

Mercury	0.016	0.0016	0.033	J	mg/kg	1	3/20/2013 11:12:20 PM
---------	-------	--------	-------	---	-------	---	-----------------------

EPA METHOD 6010B: SOIL METALS

Analyst: **JLF**

Arsenic	ND	3.1	12		mg/Kg	5	3/22/2013 7:16:03 PM
Barium	190	0.30	0.50		mg/Kg	5	3/22/2013 7:16:03 PM
Cadmium	ND	0.14	0.50		mg/Kg	5	3/22/2013 7:16:03 PM
Chromium	12	0.59	1.5		mg/Kg	5	3/22/2013 7:16:03 PM
Copper	6.9	1.2	1.5		mg/Kg	5	3/22/2013 7:16:03 PM
Lead	4.3	1.1	1.2		mg/Kg	5	3/22/2013 7:16:03 PM
Nickel	10	0.83	2.5		mg/Kg	5	3/22/2013 7:16:03 PM
Selenium	ND	7.0	12		mg/Kg	5	3/22/2013 7:16:03 PM
Silver	ND	0.18	1.2		mg/Kg	5	3/22/2013 7:16:03 PM
Zinc	32	5.0	12		mg/Kg	5	3/22/2013 7:16:03 PM

SAR SOLUBLE CATIONS

Analyst: **ELS**

Calcium	90	0.49	1.0		mg/L	1	3/24/2013 11:02:00 AM
Magnesium	21	0.34	1.0		mg/L	1	3/24/2013 11:02:00 AM
Sodium	71	0.88	1.0		mg/L	1	3/24/2013 11:02:00 AM
Sodium Adsorption Ratio	1.8	0	0			1	3/24/2013 11:02:00 AM

EPA METHOD 8270C: PAHS

Analyst: **JDC**

Naphthalene	ND	0.0043	0.020		mg/Kg	1	3/16/2013 6:43:47 PM
Acenaphthene	ND	0.0058	0.020		mg/Kg	1	3/16/2013 6:43:47 PM
Fluorene	ND	0.0041	0.020		mg/Kg	1	3/16/2013 6:43:47 PM
Anthracene	ND	0.0032	0.020		mg/Kg	1	3/16/2013 6:43:47 PM
Fluoranthene	ND	0.0036	0.020		mg/Kg	1	3/16/2013 6:43:47 PM
Pyrene	ND	0.0049	0.020		mg/Kg	1	3/16/2013 6:43:47 PM
Benz(a)anthracene	ND	0.0057	0.020		mg/Kg	1	3/16/2013 6:43:47 PM
Chrysene	ND	0.0038	0.020		mg/Kg	1	3/16/2013 6:43:47 PM

Qualifiers:

- * Value exceeds Maximum Contaminant Level.
- E Value above quantitation range
- J Analyte detected below quantitation limits
- P Sample pH greater than 2
- RL Reporting Detection Limit

- B Analyte detected in the associated Method Blank
- H Holding times for preparation or analysis exceeded
- ND Not Detected at the Reporting Limit
- R RPD outside accepted recovery limits
- S Spike Recovery outside accepted recovery limits

Hall Environmental Analysis Laboratory, Inc.**CLIENT:** Animas Environmental Services**Client Sample ID:** DC-11 C-2**Project:** K.M. DC-11**Collection Date:** 3/14/2013 8:07:00 PM**Lab ID:** 1303601-002**Matrix:** SOIL**Received Date:** 3/15/2013 10:00:00 AM

Analyses	Result	MDL	RL	Qual	Units	DF	Date Analyzed
----------	--------	-----	----	------	-------	----	---------------

EPA METHOD 8270C: PAHS

Analyst: JDC

Benzo(b)fluoranthene	ND	0.0048	0.020		mg/Kg	1	3/16/2013 6:43:47 PM
Benzo(k)fluoranthene	ND	0.0058	0.020		mg/Kg	1	3/16/2013 6:43:47 PM
Benzo(a)pyrene	ND	0.0039	0.020		mg/Kg	1	3/16/2013 6:43:47 PM
Dibenz(a,h)anthracene	ND	0.0039	0.020		mg/Kg	1	3/16/2013 6:43:47 PM
Indeno(1,2,3-cd)pyrene	ND	0.0079	0.020		mg/Kg	1	3/16/2013 6:43:47 PM
Surr: Benzo(e)pyrene	97.7	0	44.9-129		%REC	1	3/16/2013 6:43:47 PM
Surr: N-hexadecane	90.3	0	45.4-126		%REC	1	3/16/2013 6:43:47 PM

CONDUCTANCE

Analyst: IDC

Specific Conductance	830	0	1.0		µmhos/c	1	3/22/2013 3:05:00 PM
----------------------	-----	---	-----	--	---------	---	----------------------

Qualifiers:

- * Value exceeds Maximum Contaminant Level.
- E Value above quantitation range
- J Analyte detected below quantitation limits
- P Sample pH greater than 2
- RL Reporting Detection Limit

- B Analyte detected in the associated Method Blank
- H Holding times for preparation or analysis exceeded
- ND Not Detected at the Reporting Limit
- R RPD outside accepted recovery limits
- S Spike Recovery outside accepted recovery limits

Hall Environmental Analysis Laboratory, Inc.

Analytical Report

Lab Order 1303601

Date Reported: 3/25/2013

CLIENT: Animas Environmental Services

Client Sample ID: DC-11 C-3

Project: K.M. DC-11

Collection Date: 3/14/2013 8:16:00 PM

Lab ID: 1303601-003

Matrix: SOIL

Received Date: 3/15/2013 10:00:00 AM

Analyses	Result	MDL	RL	Qual	Units	DF	Date Analyzed
----------	--------	-----	----	------	-------	----	---------------

EPA METHOD 8015B: DIESEL RANGE ORGANICS

Analyst: **MMD**

Diesel Range Organics (DRO)	ND	6.0	9.7		mg/Kg	1	3/16/2013 6:50:33 PM
Motor Oil Range Organics (MRO)	ND	48	48		mg/Kg	1	3/16/2013 6:50:33 PM
Surr: DNOP	112	0	72.4-120		%REC	1	3/16/2013 6:50:33 PM

EPA METHOD 8015B: GASOLINE RANGE

Analyst: **NSB**

Gasoline Range Organics (GRO)	ND	0.91	4.7		mg/Kg	1	3/18/2013 4:45:11 PM
Surr: BFB	90.2	0	84-116		%REC	1	3/18/2013 4:45:11 PM

EPA METHOD 8021B: VOLATILES

Analyst: **NSB**

Benzene	ND	0.0029	0.047		mg/Kg	1	3/18/2013 4:45:11 PM
Toluene	ND	0.0030	0.047		mg/Kg	1	3/18/2013 4:45:11 PM
Ethylbenzene	ND	0.0033	0.047		mg/Kg	1	3/18/2013 4:45:11 PM
Xylenes, Total	ND	0.011	0.094		mg/Kg	1	3/18/2013 4:45:11 PM
Surr: 4-Bromofluorobenzene	97.4	0	80-120		%REC	1	3/18/2013 4:45:11 PM

EPA METHOD 7471: MERCURY

Analyst: **TMG**

Mercury	0.013	0.0016	0.033	J	mg/kg	1	3/20/2013 1:14:07 PM
---------	-------	--------	-------	---	-------	---	----------------------

EPA METHOD 6010B: SOIL METALS

Analyst: **JLF**

Arsenic	ND	3.1	12		mg/Kg	5	3/22/2013 7:30:11 PM
Barium	180	0.30	0.50		mg/Kg	5	3/22/2013 7:30:11 PM
Cadmium	ND	0.14	0.50		mg/Kg	5	3/22/2013 7:30:11 PM
Chromium	12	0.59	1.5		mg/Kg	5	3/22/2013 7:30:11 PM
Copper	5.8	1.2	1.5		mg/Kg	5	3/22/2013 7:30:11 PM
Lead	4.2	1.1	1.2		mg/Kg	5	3/22/2013 7:30:11 PM
Nickel	10	0.83	2.5		mg/Kg	5	3/22/2013 7:30:11 PM
Selenium	ND	7.0	12		mg/Kg	5	3/24/2013 10:11:22 AM
Silver	ND	0.18	1.2		mg/Kg	5	3/22/2013 7:30:11 PM
Zinc	30	5.0	12		mg/Kg	5	3/22/2013 7:30:11 PM

SAR SOLUBLE CATIONS

Analyst: **ELS**

Calcium	91	0.49	1.0		mg/L	1	3/24/2013 11:02:00 AM
Magnesium	17	0.34	1.0		mg/L	1	3/24/2013 11:02:00 AM
Sodium	32	0.88	1.0		mg/L	1	3/24/2013 11:02:00 AM
Sodium Adsorption Ratio	0.81	0	0			1	3/24/2013 11:02:00 AM

EPA METHOD 8270C: PAHS

Analyst: **JDC**

Naphthalene	ND	0.0044	0.020		mg/Kg	1	3/16/2013 7:53:27 PM
Acenaphthene	ND	0.0058	0.020		mg/Kg	1	3/16/2013 7:53:27 PM
Fluorene	ND	0.0041	0.020		mg/Kg	1	3/16/2013 7:53:27 PM
Anthracene	ND	0.0032	0.020		mg/Kg	1	3/16/2013 7:53:27 PM
Fluoranthene	ND	0.0036	0.020		mg/Kg	1	3/16/2013 7:53:27 PM
Pyrene	ND	0.0049	0.020		mg/Kg	1	3/16/2013 7:53:27 PM
Benz(a)anthracene	ND	0.0057	0.020		mg/Kg	1	3/16/2013 7:53:27 PM
Chrysene	ND	0.0038	0.020		mg/Kg	1	3/16/2013 7:53:27 PM

Qualifiers:

- * Value exceeds Maximum Contaminant Level.
- E Value above quantitation range
- J Analyte detected below quantitation limits
- P Sample pH greater than 2
- RL Reporting Detection Limit

- B Analyte detected in the associated Method Blank
- H Holding times for preparation or analysis exceeded
- ND Not Detected at the Reporting Limit
- R RPD outside accepted recovery limits
- S Spike Recovery outside accepted recovery limits

Hall Environmental Analysis Laboratory, Inc.**CLIENT:** Animas Environmental Services**Client Sample ID:** DC-11 C-3**Project:** K.M. DC-11**Collection Date:** 3/14/2013 8:16:00 PM**Lab ID:** 1303601-003**Matrix:** SOIL**Received Date:** 3/15/2013 10:00:00 AM

Analyses	Result	MDL	RL	Qual	Units	DF	Date Analyzed
----------	--------	-----	----	------	-------	----	---------------

EPA METHOD 8270C: PAHS

Analyst: JDC

Benzo(b)fluoranthene	ND	0.0048	0.020		mg/Kg	1	3/16/2013 7:53:27 PM
Benzo(k)fluoranthene	ND	0.0058	0.020		mg/Kg	1	3/16/2013 7:53:27 PM
Benzo(a)pyrene	ND	0.0039	0.020		mg/Kg	1	3/16/2013 7:53:27 PM
Dibenz(a,h)anthracene	ND	0.0039	0.020		mg/Kg	1	3/16/2013 7:53:27 PM
Indeno(1,2,3-cd)pyrene	ND	0.0079	0.020		mg/Kg	1	3/16/2013 7:53:27 PM
Surr: Benzo(e)pyrene	109	0	44.9-129		%REC	1	3/16/2013 7:53:27 PM
Surr: N-hexadecane	112	0	45.4-126		%REC	1	3/16/2013 7:53:27 PM

CONDUCTANCE

Analyst: IDC

Specific Conductance	600	0	1.0		µmhos/c	1	3/22/2013 4:19:00 PM
----------------------	-----	---	-----	--	---------	---	----------------------

Qualifiers:

- * Value exceeds Maximum Contaminant Level.
- E Value above quantitation range
- J Analyte detected below quantitation limits
- P Sample pH greater than 2
- RL Reporting Detection Limit

- B Analyte detected in the associated Method Blank
- H Holding times for preparation or analysis exceeded
- ND Not Detected at the Reporting Limit
- R RPD outside accepted recovery limits
- S Spike Recovery outside accepted recovery limits

Hall Environmental Analysis Laboratory, Inc.

Analytical Report

Lab Order 1303601

Date Reported: 3/25/2013

CLIENT: Animas Environmental Services

Client Sample ID: DC-11 C-4

Project: K.M. DC-11

Collection Date: 3/14/2013 8:25:00 PM

Lab ID: 1303601-004

Matrix: SOIL

Received Date: 3/15/2013 10:00:00 AM

Analyses	Result	MDL	RL	Qual	Units	DF	Date Analyzed
----------	--------	-----	----	------	-------	----	---------------

EPA METHOD 8015B: DIESEL RANGE ORGANICS

Analyst: **MMD**

Diesel Range Organics (DRO)	ND	6.0	9.7		mg/Kg	1	3/16/2013 7:12:27 PM
Motor Oil Range Organics (MRO)	ND	49	49		mg/Kg	1	3/16/2013 7:12:27 PM
Surr: DNOP	110	0	72.4-120		%REC	1	3/16/2013 7:12:27 PM

EPA METHOD 8015B: GASOLINE RANGE

Analyst: **NSB**

Gasoline Range Organics (GRO)	ND	0.91	4.7		mg/Kg	1	3/18/2013 5:15:08 PM
Surr: BFB	91.7	0	84-116		%REC	1	3/18/2013 5:15:08 PM

EPA METHOD 8021B: VOLATILES

Analyst: **NSB**

Benzene	ND	0.0029	0.047		mg/Kg	1	3/18/2013 5:15:08 PM
Toluene	ND	0.0030	0.047		mg/Kg	1	3/18/2013 5:15:08 PM
Ethylbenzene	ND	0.0033	0.047		mg/Kg	1	3/18/2013 5:15:08 PM
Xylenes, Total	ND	0.011	0.094		mg/Kg	1	3/18/2013 5:15:08 PM
Surr: 4-Bromofluorobenzene	98.6	0	80-120		%REC	1	3/18/2013 5:15:08 PM

EPA METHOD 7471: MERCURY

Analyst: **TMG**

Mercury	0.013	0.0016	0.033	J	mg/kg	1	3/20/2013 1:15:54 PM
---------	-------	--------	-------	---	-------	---	----------------------

EPA METHOD 6010B: SOIL METALS

Analyst: **JLF**

Arsenic	ND	3.1	12		mg/Kg	5	3/22/2013 7:38:52 PM
Barium	180	0.30	0.50		mg/Kg	5	3/22/2013 7:38:52 PM
Cadmium	ND	0.14	0.50		mg/Kg	5	3/22/2013 7:38:52 PM
Chromium	12	0.59	1.5		mg/Kg	5	3/22/2013 7:38:52 PM
Copper	5.7	1.2	1.5		mg/Kg	5	3/22/2013 7:38:52 PM
Lead	4.0	1.1	1.2		mg/Kg	5	3/22/2013 7:38:52 PM
Nickel	9.6	0.83	2.5		mg/Kg	5	3/22/2013 7:38:52 PM
Selenium	ND	7.0	12		mg/Kg	5	3/24/2013 10:13:42 AM
Silver	ND	0.18	1.2		mg/Kg	5	3/22/2013 7:38:52 PM
Zinc	29	5.0	12		mg/Kg	5	3/22/2013 7:38:52 PM

SAR SOLUBLE CATIONS

Analyst: **ELS**

Calcium	85	0.49	1.0		mg/L	1	3/24/2013 11:02:00 AM
Magnesium	19	0.34	1.0		mg/L	1	3/24/2013 11:02:00 AM
Sodium	26	0.88	1.0		mg/L	1	3/24/2013 11:02:00 AM
Sodium Adsorption Ratio	0.67	0	0			1	3/24/2013 11:02:00 AM

EPA METHOD 8270C: PAHS

Analyst: **JDC**

Naphthalene	ND	0.0044	0.020		mg/Kg	1	3/16/2013 8:16:40 PM
Acenaphthene	ND	0.0058	0.020		mg/Kg	1	3/16/2013 8:16:40 PM
Fluorene	ND	0.0041	0.020		mg/Kg	1	3/16/2013 8:16:40 PM
Anthracene	ND	0.0032	0.020		mg/Kg	1	3/16/2013 8:16:40 PM
Fluoranthene	ND	0.0036	0.020		mg/Kg	1	3/16/2013 8:16:40 PM
Pyrene	ND	0.0049	0.020		mg/Kg	1	3/16/2013 8:16:40 PM
Benz(a)anthracene	ND	0.0057	0.020		mg/Kg	1	3/16/2013 8:16:40 PM
Chrysene	ND	0.0038	0.020		mg/Kg	1	3/16/2013 8:16:40 PM

Qualifiers:

- * Value exceeds Maximum Contaminant Level.
- E Value above quantitation range
- J Analyte detected below quantitation limits
- P Sample pH greater than 2
- RL Reporting Detection Limit

- B Analyte detected in the associated Method Blank
- H Holding times for preparation or analysis exceeded
- ND Not Detected at the Reporting Limit
- R RPD outside accepted recovery limits
- S Spike Recovery outside accepted recovery limits

Hall Environmental Analysis Laboratory, Inc.**CLIENT:** Animas Environmental Services**Client Sample ID:** DC-11 C-4**Project:** K.M. DC-11**Collection Date:** 3/14/2013 8:25:00 PM**Lab ID:** 1303601-004**Matrix:** SOIL**Received Date:** 3/15/2013 10:00:00 AM

Analyses	Result	MDL	RL	Qual	Units	DF	Date Analyzed
----------	--------	-----	----	------	-------	----	---------------

EPA METHOD 8270C: PAHS

Analyst: JDC

Benzo(b)fluoranthene	ND	0.0048	0.020		mg/Kg	1	3/16/2013 8:16:40 PM
Benzo(k)fluoranthene	ND	0.0058	0.020		mg/Kg	1	3/16/2013 8:16:40 PM
Benzo(a)pyrene	ND	0.0039	0.020		mg/Kg	1	3/16/2013 8:16:40 PM
Dibenz(a,h)anthracene	ND	0.0039	0.020		mg/Kg	1	3/16/2013 8:16:40 PM
Indeno(1,2,3-cd)pyrene	ND	0.0079	0.020		mg/Kg	1	3/16/2013 8:16:40 PM
Surr: Benzo(e)pyrene	103	0	44.9-129		%REC	1	3/16/2013 8:16:40 PM
Surr: N-hexadecane	99.4	0	45.4-126		%REC	1	3/16/2013 8:16:40 PM

CONDUCTANCE

Analyst: IDC

Specific Conductance	740	0	1.0		µmhos/c	1	3/22/2013 3:05:00 PM
----------------------	-----	---	-----	--	---------	---	----------------------

Qualifiers:

- * Value exceeds Maximum Contaminant Level.
- E Value above quantitation range
- J Analyte detected below quantitation limits
- P Sample pH greater than 2
- RL Reporting Detection Limit

- B Analyte detected in the associated Method Blank
- H Holding times for preparation or analysis exceeded
- ND Not Detected at the Reporting Limit
- R RPD outside accepted recovery limits
- S Spike Recovery outside accepted recovery limits

Hall Environmental Analysis Laboratory, Inc.

Analytical Report

Lab Order 1303601

Date Reported: 3/25/2013

CLIENT: Animas Environmental Services

Client Sample ID: DC-11 C-5

Project: K.M. DC-11

Collection Date: 3/14/2013 8:37:00 PM

Lab ID: 1303601-005

Matrix: SOIL

Received Date: 3/15/2013 10:00:00 AM

Analyses	Result	MDL	RL	Qual	Units	DF	Date Analyzed
----------	--------	-----	----	------	-------	----	---------------

EPA METHOD 8015B: DIESEL RANGE ORGANICS

Analyst: **MMD**

Diesel Range Organics (DRO)	ND	6.4	10		mg/Kg	1	3/16/2013 7:55:59 PM
Motor Oil Range Organics (MRO)	ND	52	52		mg/Kg	1	3/16/2013 7:55:59 PM
Surr: DNOP	109	0	72.4-120		%REC	1	3/16/2013 7:55:59 PM

EPA METHOD 8015B: GASOLINE RANGE

Analyst: **NSB**

Gasoline Range Organics (GRO)	ND	0.91	4.7		mg/Kg	1	3/18/2013 5:45:15 PM
Surr: BFB	92.1	0	84-116		%REC	1	3/18/2013 5:45:15 PM

EPA METHOD 8021B: VOLATILES

Analyst: **NSB**

Benzene	ND	0.0029	0.047		mg/Kg	1	3/18/2013 5:45:15 PM
Toluene	ND	0.0030	0.047		mg/Kg	1	3/18/2013 5:45:15 PM
Ethylbenzene	ND	0.0033	0.047		mg/Kg	1	3/18/2013 5:45:15 PM
Xylenes, Total	ND	0.011	0.094		mg/Kg	1	3/18/2013 5:45:15 PM
Surr: 4-Bromofluorobenzene	99.0	0	80-120		%REC	1	3/18/2013 5:45:15 PM

EPA METHOD 7471: MERCURY

Analyst: **TMG**

Mercury	0.026	0.0016	0.033	J	mg/kg	1	3/20/2013 1:17:42 PM
---------	-------	--------	-------	---	-------	---	----------------------

EPA METHOD 6010B: SOIL METALS

Analyst: **JLF**

Arsenic	ND	1.3	5.0		mg/Kg	2	3/22/2013 7:43:33 PM
Barium	320	0.61	1.0		mg/Kg	10	3/24/2013 10:18:29 AM
Cadmium	0.095	0.054	0.20	J	mg/Kg	2	3/22/2013 7:43:33 PM
Chromium	6.2	0.24	0.60		mg/Kg	2	3/22/2013 7:43:33 PM
Copper	9.2	0.46	0.60		mg/Kg	2	3/22/2013 7:43:33 PM
Lead	11	0.44	0.50		mg/Kg	2	3/22/2013 7:43:33 PM
Nickel	13	0.33	1.0		mg/Kg	2	3/22/2013 7:43:33 PM
Selenium	ND	2.8	5.0		mg/Kg	2	3/24/2013 10:16:07 AM
Silver	ND	0.071	0.50		mg/Kg	2	3/22/2013 7:43:33 PM
Zinc	43	2.0	5.0		mg/Kg	2	3/22/2013 7:43:33 PM

SAR SOLUBLE CATIONS

Analyst: **ELS**

Calcium	75	0.49	1.0		mg/L	1	3/24/2013 11:02:00 AM
Magnesium	21	0.34	1.0		mg/L	1	3/24/2013 11:02:00 AM
Sodium	190	0.88	1.0		mg/L	1	3/24/2013 11:02:00 AM
Sodium Adsorption Ratio	5.1	0	0			1	3/24/2013 11:02:00 AM

EPA METHOD 8270C: PAHS

Analyst: **JDC**

Naphthalene	ND	0.0043	0.020		mg/Kg	1	3/16/2013 8:39:50 PM
Acenaphthene	ND	0.0058	0.020		mg/Kg	1	3/16/2013 8:39:50 PM
Fluorene	ND	0.0041	0.020		mg/Kg	1	3/16/2013 8:39:50 PM
Anthracene	ND	0.0032	0.020		mg/Kg	1	3/16/2013 8:39:50 PM
Fluoranthene	ND	0.0036	0.020		mg/Kg	1	3/16/2013 8:39:50 PM
Pyrene	ND	0.0049	0.020		mg/Kg	1	3/16/2013 8:39:50 PM
Benz(a)anthracene	ND	0.0057	0.020		mg/Kg	1	3/16/2013 8:39:50 PM
Chrysene	ND	0.0038	0.020		mg/Kg	1	3/16/2013 8:39:50 PM

Qualifiers:

- * Value exceeds Maximum Contaminant Level.
- E Value above quantitation range
- J Analyte detected below quantitation limits
- P Sample pH greater than 2
- RL Reporting Detection Limit

- B Analyte detected in the associated Method Blank
- H Holding times for preparation or analysis exceeded
- ND Not Detected at the Reporting Limit
- R RPD outside accepted recovery limits
- S Spike Recovery outside accepted recovery limits

Hall Environmental Analysis Laboratory, Inc.**CLIENT:** Animas Environmental Services**Client Sample ID:** DC-11 C-5**Project:** K.M. DC-11**Collection Date:** 3/14/2013 8:37:00 PM**Lab ID:** 1303601-005**Matrix:** SOIL**Received Date:** 3/15/2013 10:00:00 AM

Analyses	Result	MDL	RL	Qual	Units	DF	Date Analyzed
----------	--------	-----	----	------	-------	----	---------------

EPA METHOD 8270C: PAHS

Analyst: JDC

Benzo(b)fluoranthene	ND	0.0047	0.020		mg/Kg	1	3/16/2013 8:39:50 PM
Benzo(k)fluoranthene	ND	0.0058	0.020		mg/Kg	1	3/16/2013 8:39:50 PM
Benzo(a)pyrene	ND	0.0039	0.020		mg/Kg	1	3/16/2013 8:39:50 PM
Dibenz(a,h)anthracene	ND	0.0039	0.020		mg/Kg	1	3/16/2013 8:39:50 PM
Indeno(1,2,3-cd)pyrene	ND	0.0078	0.020		mg/Kg	1	3/16/2013 8:39:50 PM
Surr: Benzo(e)pyrene	106	0	44.9-129		%REC	1	3/16/2013 8:39:50 PM
Surr: N-hexadecane	107	0	45.4-126		%REC	1	3/16/2013 8:39:50 PM

CONDUCTANCE

Analyst: IDC

Specific Conductance	890	0	1.0		µmhos/c	1	3/22/2013 3:05:00 PM
----------------------	-----	---	-----	--	---------	---	----------------------

Qualifiers:

- * Value exceeds Maximum Contaminant Level.
- E Value above quantitation range
- J Analyte detected below quantitation limits
- P Sample pH greater than 2
- RL Reporting Detection Limit

- B Analyte detected in the associated Method Blank
- H Holding times for preparation or analysis exceeded
- ND Not Detected at the Reporting Limit
- R RPD outside accepted recovery limits
- S Spike Recovery outside accepted recovery limits

Hall Environmental Analysis Laboratory, Inc.

Analytical Report

Lab Order 1303601

Date Reported: 3/25/2013

CLIENT: Animas Environmental Services

Client Sample ID: DC-11 C-6

Project: K.M. DC-11

Collection Date: 3/14/2013 8:27:00 PM

Lab ID: 1303601-006

Matrix: SOIL

Received Date: 3/15/2013 10:00:00 AM

Analyses	Result	MDL	RL	Qual	Units	DF	Date Analyzed
----------	--------	-----	----	------	-------	----	---------------

EPA METHOD 8015B: DIESEL RANGE ORGANICS

Analyst: **MMD**

Diesel Range Organics (DRO)	ND	6.4	10		mg/Kg	1	3/16/2013 8:17:38 PM
Motor Oil Range Organics (MRO)	ND	51	51		mg/Kg	1	3/16/2013 8:17:38 PM
Surr: DNOP	116	0	72.4-120		%REC	1	3/16/2013 8:17:38 PM

EPA METHOD 8015B: GASOLINE RANGE

Analyst: **NSB**

Gasoline Range Organics (GRO)	ND	0.93	4.8		mg/Kg	1	3/18/2013 6:15:22 PM
Surr: BFB	90.6	0	84-116		%REC	1	3/18/2013 6:15:22 PM

EPA METHOD 8021B: VOLATILES

Analyst: **NSB**

Benzene	ND	0.0030	0.048		mg/Kg	1	3/18/2013 6:15:22 PM
Toluene	ND	0.0031	0.048		mg/Kg	1	3/18/2013 6:15:22 PM
Ethylbenzene	ND	0.0034	0.048		mg/Kg	1	3/18/2013 6:15:22 PM
Xylenes, Total	ND	0.011	0.096		mg/Kg	1	3/18/2013 6:15:22 PM
Surr: 4-Bromofluorobenzene	97.9	0	80-120		%REC	1	3/18/2013 6:15:22 PM

EPA METHOD 7471: MERCURY

Analyst: **TMG**

Mercury	0.014	0.0016	0.033	J	mg/kg	1	3/20/2013 1:19:30 PM
---------	-------	--------	-------	---	-------	---	----------------------

EPA METHOD 6010B: SOIL METALS

Analyst: **JLF**

Arsenic	ND	1.3	5.0		mg/Kg	2	3/22/2013 7:50:39 PM
Barium	220	0.30	0.50		mg/Kg	5	3/22/2013 8:00:07 PM
Cadmium	ND	0.054	0.20		mg/Kg	2	3/22/2013 7:50:39 PM
Chromium	8.9	0.24	0.60		mg/Kg	2	3/22/2013 7:50:39 PM
Copper	4.7	0.46	0.60		mg/Kg	2	3/22/2013 7:50:39 PM
Lead	2.0	0.44	0.50		mg/Kg	2	3/22/2013 7:50:39 PM
Nickel	7.2	0.33	1.0		mg/Kg	2	3/22/2013 7:50:39 PM
Selenium	ND	2.8	5.0		mg/Kg	2	3/24/2013 10:22:30 AM
Silver	ND	0.071	0.50		mg/Kg	2	3/22/2013 7:50:39 PM
Zinc	21	2.0	5.0		mg/Kg	2	3/22/2013 7:50:39 PM

SAR SOLUBLE CATIONS

Analyst: **ELS**

Calcium	58	0.49	1.0		mg/L	1	3/24/2013 11:02:00 AM
Magnesium	15	0.34	1.0		mg/L	1	3/24/2013 11:02:00 AM
Sodium	45	0.88	1.0		mg/L	1	3/24/2013 11:02:00 AM
Sodium Adsorption Ratio	1.3	0	0			1	3/24/2013 11:02:00 AM

EPA METHOD 8270C: PAHS

Analyst: **JDC**

Naphthalene	ND	0.0044	0.020		mg/Kg	1	3/16/2013 9:03:02 PM
Acenaphthene	ND	0.0058	0.020		mg/Kg	1	3/16/2013 9:03:02 PM
Fluorene	ND	0.0041	0.020		mg/Kg	1	3/16/2013 9:03:02 PM
Anthracene	ND	0.0032	0.020		mg/Kg	1	3/16/2013 9:03:02 PM
Fluoranthene	ND	0.0036	0.020		mg/Kg	1	3/16/2013 9:03:02 PM
Pyrene	ND	0.0049	0.020		mg/Kg	1	3/16/2013 9:03:02 PM
Benz(a)anthracene	ND	0.0057	0.020		mg/Kg	1	3/16/2013 9:03:02 PM
Chrysene	ND	0.0038	0.020		mg/Kg	1	3/16/2013 9:03:02 PM

Qualifiers:

- * Value exceeds Maximum Contaminant Level.
- E Value above quantitation range
- J Analyte detected below quantitation limits
- P Sample pH greater than 2
- RL Reporting Detection Limit

- B Analyte detected in the associated Method Blank
- H Holding times for preparation or analysis exceeded
- ND Not Detected at the Reporting Limit
- R RPD outside accepted recovery limits
- S Spike Recovery outside accepted recovery limits

Hall Environmental Analysis Laboratory, Inc.**CLIENT:** Animas Environmental Services**Client Sample ID:** DC-11 C-6**Project:** K.M. DC-11**Collection Date:** 3/14/2013 8:27:00 PM**Lab ID:** 1303601-006**Matrix:** SOIL**Received Date:** 3/15/2013 10:00:00 AM

Analyses	Result	MDL	RL	Qual	Units	DF	Date Analyzed
EPA METHOD 8270C: PAHS							Analyst: JDC
Benzo(b)fluoranthene	ND	0.0048	0.020		mg/Kg	1	3/16/2013 9:03:02 PM
Benzo(k)fluoranthene	ND	0.0058	0.020		mg/Kg	1	3/16/2013 9:03:02 PM
Benzo(a)pyrene	ND	0.0039	0.020		mg/Kg	1	3/16/2013 9:03:02 PM
Dibenz(a,h)anthracene	ND	0.0039	0.020		mg/Kg	1	3/16/2013 9:03:02 PM
Indeno(1,2,3-cd)pyrene	ND	0.0079	0.020		mg/Kg	1	3/16/2013 9:03:02 PM
Surr: Benzo(e)pyrene	97.7	0	44.9-129		%REC	1	3/16/2013 9:03:02 PM
Surr: N-hexadecane	96.9	0	45.4-126		%REC	1	3/16/2013 9:03:02 PM
CONDUCTANCE							Analyst: IDC
Specific Conductance	600	0	1.0		µmhos/c	1	3/22/2013 3:05:00 PM

Qualifiers:

- * Value exceeds Maximum Contaminant Level.
- E Value above quantitation range
- J Analyte detected below quantitation limits
- P Sample pH greater than 2
- RL Reporting Detection Limit

- B Analyte detected in the associated Method Blank
- H Holding times for preparation or analysis exceeded
- ND Not Detected at the Reporting Limit
- R RPD outside accepted recovery limits
- S Spike Recovery outside accepted recovery limits

Hall Environmental Analysis Laboratory, Inc.

Analytical Report

Lab Order 1303601

Date Reported: 3/25/2013

CLIENT: Animas Environmental Services

Client Sample ID: DC-11 C-7

Project: K.M. DC-11

Collection Date: 3/14/2013 8:47:00 PM

Lab ID: 1303601-007

Matrix: SOIL

Received Date: 3/15/2013 10:00:00 AM

Analyses	Result	MDL	RL	Qual	Units	DF	Date Analyzed
----------	--------	-----	----	------	-------	----	---------------

EPA METHOD 8015B: DIESEL RANGE ORGANICS

Analyst: **MMD**

Diesel Range Organics (DRO)	ND	6.0	9.7		mg/Kg	1	3/16/2013 8:39:20 PM
Motor Oil Range Organics (MRO)	ND	48	48		mg/Kg	1	3/16/2013 8:39:20 PM
Surr: DNOP	113	0	72.4-120		%REC	1	3/16/2013 8:39:20 PM

EPA METHOD 8015B: GASOLINE RANGE

Analyst: **NSB**

Gasoline Range Organics (GRO)	ND	0.91	4.7		mg/Kg	1	3/18/2013 6:45:30 PM
Surr: BFB	91.3	0	84-116		%REC	1	3/18/2013 6:45:30 PM

EPA METHOD 8021B: VOLATILES

Analyst: **NSB**

Benzene	ND	0.0029	0.047		mg/Kg	1	3/18/2013 6:45:30 PM
Toluene	ND	0.0030	0.047		mg/Kg	1	3/18/2013 6:45:30 PM
Ethylbenzene	ND	0.0033	0.047		mg/Kg	1	3/18/2013 6:45:30 PM
Xylenes, Total	ND	0.011	0.094		mg/Kg	1	3/18/2013 6:45:30 PM
Surr: 4-Bromofluorobenzene	96.1	0	80-120		%REC	1	3/18/2013 6:45:30 PM

EPA METHOD 7471: MERCURY

Analyst: **TMG**

Mercury	0.013	0.0016	0.033	J	mg/kg	1	3/20/2013 1:25:02 PM
---------	-------	--------	-------	---	-------	---	----------------------

EPA METHOD 6010B: SOIL METALS

Analyst: **ELS**

Arsenic	1.9	0.63	2.5	J	mg/Kg	1	3/24/2013 10:24:54 AM
Barium	280	0.61	1.0		mg/Kg	10	3/24/2013 10:27:17 AM
Cadmium	ND	0.027	0.10		mg/Kg	1	3/22/2013 8:02:28 PM
Chromium	6.0	0.12	0.30		mg/Kg	1	3/22/2013 8:02:28 PM
Copper	3.4	0.23	0.30		mg/Kg	1	3/22/2013 8:02:28 PM
Lead	1.2	0.22	0.25		mg/Kg	1	3/22/2013 8:02:28 PM
Nickel	5.4	0.17	0.50		mg/Kg	1	3/22/2013 8:02:28 PM
Selenium	ND	1.4	2.5		mg/Kg	1	3/24/2013 10:24:54 AM
Silver	ND	0.035	0.25		mg/Kg	1	3/22/2013 8:02:28 PM
Zinc	16	1.0	2.5		mg/Kg	1	3/22/2013 8:02:28 PM

SAR SOLUBLE CATIONS

Analyst: **ELS**

Calcium	120	0.49	1.0		mg/L	1	3/24/2013 11:02:00 AM
Magnesium	30	0.34	1.0		mg/L	1	3/24/2013 11:02:00 AM
Sodium	110	0.88	1.0		mg/L	1	3/24/2013 11:02:00 AM
Sodium Adsorption Ratio	2.3	0	0			1	3/24/2013 11:02:00 AM

EPA METHOD 8270C: PAHS

Analyst: **JDC**

Naphthalene	ND	0.0044	0.020		mg/Kg	1	3/16/2013 9:26:14 PM
Acenaphthene	ND	0.0058	0.020		mg/Kg	1	3/16/2013 9:26:14 PM
Fluorene	ND	0.0041	0.020		mg/Kg	1	3/16/2013 9:26:14 PM
Anthracene	ND	0.0032	0.020		mg/Kg	1	3/16/2013 9:26:14 PM
Fluoranthene	ND	0.0036	0.020		mg/Kg	1	3/16/2013 9:26:14 PM
Pyrene	ND	0.0049	0.020		mg/Kg	1	3/16/2013 9:26:14 PM
Benz(a)anthracene	ND	0.0057	0.020		mg/Kg	1	3/16/2013 9:26:14 PM
Chrysene	ND	0.0038	0.020		mg/Kg	1	3/16/2013 9:26:14 PM

Qualifiers:

- * Value exceeds Maximum Contaminant Level.
- E Value above quantitation range
- J Analyte detected below quantitation limits
- P Sample pH greater than 2
- RL Reporting Detection Limit

- B Analyte detected in the associated Method Blank
- H Holding times for preparation or analysis exceeded
- ND Not Detected at the Reporting Limit
- R RPD outside accepted recovery limits
- S Spike Recovery outside accepted recovery limits

Hall Environmental Analysis Laboratory, Inc.**CLIENT:** Animas Environmental Services**Client Sample ID:** DC-11 C-7**Project:** K.M. DC-11**Collection Date:** 3/14/2013 8:47:00 PM**Lab ID:** 1303601-007**Matrix:** SOIL**Received Date:** 3/15/2013 10:00:00 AM

Analyses	Result	MDL	RL	Qual	Units	DF	Date Analyzed
----------	--------	-----	----	------	-------	----	---------------

EPA METHOD 8270C: PAHS

Analyst: JDC

Benzo(b)fluoranthene	ND	0.0048	0.020		mg/Kg	1	3/16/2013 9:26:14 PM
Benzo(k)fluoranthene	ND	0.0058	0.020		mg/Kg	1	3/16/2013 9:26:14 PM
Benzo(a)pyrene	ND	0.0039	0.020		mg/Kg	1	3/16/2013 9:26:14 PM
Dibenz(a,h)anthracene	ND	0.0039	0.020		mg/Kg	1	3/16/2013 9:26:14 PM
Indeno(1,2,3-cd)pyrene	ND	0.0079	0.020		mg/Kg	1	3/16/2013 9:26:14 PM
Surr: Benzo(e)pyrene	106	0	44.9-129		%REC	1	3/16/2013 9:26:14 PM
Surr: N-hexadecane	103	0	45.4-126		%REC	1	3/16/2013 9:26:14 PM

CONDUCTANCE

Analyst: IDC

Specific Conductance	890	0	1.0		µmhos/c	1	3/22/2013 3:05:00 PM
----------------------	-----	---	-----	--	---------	---	----------------------

Qualifiers:

- * Value exceeds Maximum Contaminant Level.
- E Value above quantitation range
- J Analyte detected below quantitation limits
- P Sample pH greater than 2
- RL Reporting Detection Limit

- B Analyte detected in the associated Method Blank
- H Holding times for preparation or analysis exceeded
- ND Not Detected at the Reporting Limit
- R RPD outside accepted recovery limits
- S Spike Recovery outside accepted recovery limits

Hall Environmental Analysis Laboratory, Inc.

Analytical Report

Lab Order 1303601

Date Reported: 3/25/2013

CLIENT: Animas Environmental Services

Client Sample ID: DC-11 C-8

Project: K.M. DC-11

Collection Date: 3/14/2013 8:36:00 PM

Lab ID: 1303601-008

Matrix: SOIL

Received Date: 3/15/2013 10:00:00 AM

Analyses	Result	MDL	RL	Qual	Units	DF	Date Analyzed
----------	--------	-----	----	------	-------	----	---------------

EPA METHOD 8015B: DIESEL RANGE ORGANICS

Analyst: **MMD**

Diesel Range Organics (DRO)	ND	5.9	9.6		mg/Kg	1	3/16/2013 9:00:56 PM
Motor Oil Range Organics (MRO)	ND	48	48		mg/Kg	1	3/16/2013 9:00:56 PM
Surr: DNOP	111	0	72.4-120		%REC	1	3/16/2013 9:00:56 PM

EPA METHOD 8015B: GASOLINE RANGE

Analyst: **NSB**

Gasoline Range Organics (GRO)	ND	0.91	4.7		mg/Kg	1	3/18/2013 9:15:43 PM
Surr: BFB	92.2	0	84-116		%REC	1	3/18/2013 9:15:43 PM

EPA METHOD 8021B: VOLATILES

Analyst: **NSB**

Benzene	ND	0.0029	0.047		mg/Kg	1	3/18/2013 9:15:43 PM
Toluene	ND	0.0030	0.047		mg/Kg	1	3/18/2013 9:15:43 PM
Ethylbenzene	ND	0.0033	0.047		mg/Kg	1	3/18/2013 9:15:43 PM
Xylenes, Total	ND	0.011	0.095		mg/Kg	1	3/18/2013 9:15:43 PM
Surr: 4-Bromofluorobenzene	99.9	0	80-120		%REC	1	3/18/2013 9:15:43 PM

EPA METHOD 7471: MERCURY

Analyst: **TMG**

Mercury	0.013	0.0016	0.033	J	mg/kg	1	3/20/2013 1:26:51 PM
---------	-------	--------	-------	---	-------	---	----------------------

EPA METHOD 6010B: SOIL METALS

Analyst: **JLF**

Arsenic	ND	3.1	12		mg/Kg	5	3/22/2013 8:14:11 PM
Barium	260	0.61	1.0		mg/Kg	10	3/24/2013 10:32:02 AM
Cadmium	ND	0.14	0.50		mg/Kg	5	3/22/2013 8:14:11 PM
Chromium	7.0	0.59	1.5		mg/Kg	5	3/22/2013 8:14:11 PM
Copper	4.2	1.2	1.5		mg/Kg	5	3/22/2013 8:14:11 PM
Lead	4.4	1.1	1.2		mg/Kg	5	3/22/2013 8:14:11 PM
Nickel	9.8	0.83	2.5		mg/Kg	5	3/22/2013 8:14:11 PM
Selenium	ND	7.0	12		mg/Kg	5	3/24/2013 10:29:39 AM
Silver	ND	0.18	1.2		mg/Kg	5	3/22/2013 8:14:11 PM
Zinc	33	5.0	12		mg/Kg	5	3/22/2013 8:14:11 PM

SAR SOLUBLE CATIONS

Analyst: **ELS**

Calcium	100	0.49	1.0		mg/L	1	3/24/2013 11:02:00 AM
Magnesium	29	0.34	1.0		mg/L	1	3/24/2013 11:02:00 AM
Sodium	130	0.88	1.0		mg/L	1	3/24/2013 11:02:00 AM
Sodium Adsorption Ratio	2.9	0	0			1	3/24/2013 11:02:00 AM

EPA METHOD 8270C: PAHS

Analyst: **JDC**

Naphthalene	ND	0.0043	0.020		mg/Kg	1	3/16/2013 9:49:27 PM
Acenaphthene	ND	0.0058	0.020		mg/Kg	1	3/16/2013 9:49:27 PM
Fluorene	ND	0.0041	0.020		mg/Kg	1	3/16/2013 9:49:27 PM
Anthracene	ND	0.0032	0.020		mg/Kg	1	3/16/2013 9:49:27 PM
Fluoranthene	ND	0.0036	0.020		mg/Kg	1	3/16/2013 9:49:27 PM
Pyrene	ND	0.0049	0.020		mg/Kg	1	3/16/2013 9:49:27 PM
Benz(a)anthracene	ND	0.0057	0.020		mg/Kg	1	3/16/2013 9:49:27 PM
Chrysene	ND	0.0038	0.020		mg/Kg	1	3/16/2013 9:49:27 PM

Qualifiers:

- * Value exceeds Maximum Contaminant Level.
- E Value above quantitation range
- J Analyte detected below quantitation limits
- P Sample pH greater than 2
- RL Reporting Detection Limit

- B Analyte detected in the associated Method Blank
- H Holding times for preparation or analysis exceeded
- ND Not Detected at the Reporting Limit
- R RPD outside accepted recovery limits
- S Spike Recovery outside accepted recovery limits

Analytical ReportLab Order **1303601**Date Reported: **3/25/2013****Hall Environmental Analysis Laboratory, Inc.****CLIENT:** Animas Environmental Services**Client Sample ID:** DC-11 C-8**Project:** K.M. DC-11**Collection Date:** 3/14/2013 8:36:00 PM**Lab ID:** 1303601-008**Matrix:** SOIL**Received Date:** 3/15/2013 10:00:00 AM

Analyses	Result	MDL	RL	Qual	Units	DF	Date Analyzed
----------	--------	-----	----	------	-------	----	---------------

EPA METHOD 8270C: PAHSAnalyst: **JDC**

Benzo(b)fluoranthene	ND	0.0047	0.020		mg/Kg	1	3/16/2013 9:49:27 PM
Benzo(k)fluoranthene	ND	0.0058	0.020		mg/Kg	1	3/16/2013 9:49:27 PM
Benzo(a)pyrene	ND	0.0039	0.020		mg/Kg	1	3/16/2013 9:49:27 PM
Dibenz(a,h)anthracene	ND	0.0039	0.020		mg/Kg	1	3/16/2013 9:49:27 PM
Indeno(1,2,3-cd)pyrene	ND	0.0078	0.020		mg/Kg	1	3/16/2013 9:49:27 PM
Surr: Benzo(e)pyrene	108	0	44.9-129		%REC	1	3/16/2013 9:49:27 PM
Surr: N-hexadecane	111	0	45.4-126		%REC	1	3/16/2013 9:49:27 PM

CONDUCTANCEAnalyst: **IDC**

Specific Conductance	740	0	1.0		µmhos/c	1	3/22/2013 3:05:00 PM
----------------------	-----	---	-----	--	---------	---	----------------------

Qualifiers:

- * Value exceeds Maximum Contaminant Level.
- E Value above quantitation range
- J Analyte detected below quantitation limits
- P Sample pH greater than 2
- RL Reporting Detection Limit

- B Analyte detected in the associated Method Blank
- H Holding times for preparation or analysis exceeded
- ND Not Detected at the Reporting Limit
- R RPD outside accepted recovery limits
- S Spike Recovery outside accepted recovery limits

Hall Environmental Analysis Laboratory, Inc.

CLIENT: Animas Environmental Services

Client Sample ID: DC-11 C-9

Project: K.M. DC-11

Collection Date: 3/14/2013 8:58:00 PM

Lab ID: 1303601-009

Matrix: SOIL

Received Date: 3/15/2013 10:00:00 AM

Analyses	Result	MDL	RL	Qual	Units	DF	Date Analyzed
----------	--------	-----	----	------	-------	----	---------------

EPA METHOD 8015B: DIESEL RANGE ORGANICS

Analyst: MMD

Diesel Range Organics (DRO)	ND	6.1	9.9		mg/Kg	1	3/16/2013 9:22:39 PM
Motor Oil Range Organics (MRO)	ND	50	50		mg/Kg	1	3/16/2013 9:22:39 PM
Surr: DNOP	115	0	72.4-120		%REC	1	3/16/2013 9:22:39 PM

EPA METHOD 8015B: GASOLINE RANGE

Analyst: NSB

Gasoline Range Organics (GRO)	ND	0.92	4.7		mg/Kg	1	3/18/2013 9:45:43 PM
Surr: BFB	92.5	0	84-116		%REC	1	3/18/2013 9:45:43 PM

EPA METHOD 8021B: VOLATILES

Analyst: NSB

Benzene	ND	0.0029	0.047		mg/Kg	1	3/18/2013 9:45:43 PM
Toluene	ND	0.0030	0.047		mg/Kg	1	3/18/2013 9:45:43 PM
Ethylbenzene	ND	0.0033	0.047		mg/Kg	1	3/18/2013 9:45:43 PM
Xylenes, Total	ND	0.011	0.095		mg/Kg	1	3/18/2013 9:45:43 PM
Surr: 4-Bromofluorobenzene	99.5	0	80-120		%REC	1	3/18/2013 9:45:43 PM

EPA METHOD 7471: MERCURY

Analyst: TMG

Mercury	0.026	0.0016	0.033	J	mg/kg	1	3/20/2013 1:28:42 PM
---------	-------	--------	-------	---	-------	---	----------------------

EPA METHOD 6010B: SOIL METALS

Analyst: JLF

Arsenic	ND	1.3	5.0		mg/Kg	2	3/22/2013 8:18:50 PM
Barium	370	0.61	1.0		mg/Kg	10	3/24/2013 10:45:10 AM
Cadmium	0.076	0.054	0.20	J	mg/Kg	2	3/22/2013 8:18:50 PM
Chromium	7.0	0.24	0.60		mg/Kg	2	3/22/2013 8:18:50 PM
Copper	7.4	0.46	0.60		mg/Kg	2	3/22/2013 8:18:50 PM
Lead	8.1	0.44	0.50		mg/Kg	2	3/22/2013 8:18:50 PM
Nickel	12	0.33	1.0		mg/Kg	2	3/22/2013 8:18:50 PM
Selenium	ND	2.8	5.0		mg/Kg	2	3/24/2013 10:42:50 AM
Silver	ND	0.071	0.50		mg/Kg	2	3/22/2013 8:18:50 PM
Zinc	39	2.0	5.0		mg/Kg	2	3/22/2013 8:18:50 PM

SAR SOLUBLE CATIONS

Analyst: ELS

Calcium	57	0.49	1.0		mg/L	1	3/24/2013 11:02:00 AM
Magnesium	18	0.34	1.0		mg/L	1	3/24/2013 11:02:00 AM
Sodium	160	0.88	1.0		mg/L	1	3/24/2013 11:02:00 AM
Sodium Adsorption Ratio	4.6	0	0			1	3/24/2013 11:02:00 AM

EPA METHOD 8270C: PAHS

Analyst: JDC

Naphthalene	ND	0.0043	0.020		mg/Kg	1	3/16/2013 10:12:38 PM
Acenaphthene	ND	0.0058	0.020		mg/Kg	1	3/16/2013 10:12:38 PM
Fluorene	ND	0.0041	0.020		mg/Kg	1	3/16/2013 10:12:38 PM
Anthracene	ND	0.0032	0.020		mg/Kg	1	3/16/2013 10:12:38 PM
Fluoranthene	ND	0.0036	0.020		mg/Kg	1	3/16/2013 10:12:38 PM
Pyrene	ND	0.0049	0.020		mg/Kg	1	3/16/2013 10:12:38 PM
Benz(a)anthracene	ND	0.0057	0.020		mg/Kg	1	3/16/2013 10:12:38 PM
Chrysene	ND	0.0038	0.020		mg/Kg	1	3/16/2013 10:12:38 PM

Qualifiers:

- * Value exceeds Maximum Contaminant Level.
- E Value above quantitation range
- J Analyte detected below quantitation limits
- P Sample pH greater than 2
- RL Reporting Detection Limit

- B Analyte detected in the associated Method Blank
- H Holding times for preparation or analysis exceeded
- ND Not Detected at the Reporting Limit
- R RPD outside accepted recovery limits
- S Spike Recovery outside accepted recovery limits

Hall Environmental Analysis Laboratory, Inc.**CLIENT:** Animas Environmental Services**Client Sample ID:** DC-11 C-9**Project:** K.M. DC-11**Collection Date:** 3/14/2013 8:58:00 PM**Lab ID:** 1303601-009**Matrix:** SOIL**Received Date:** 3/15/2013 10:00:00 AM

Analyses	Result	MDL	RL	Qual	Units	DF	Date Analyzed
EPA METHOD 8270C: PAHS							Analyst: JDC
Benzo(b)fluoranthene	ND	0.0047	0.020		mg/Kg	1	3/16/2013 10:12:38 PM
Benzo(k)fluoranthene	ND	0.0058	0.020		mg/Kg	1	3/16/2013 10:12:38 PM
Benzo(a)pyrene	ND	0.0039	0.020		mg/Kg	1	3/16/2013 10:12:38 PM
Dibenz(a,h)anthracene	ND	0.0039	0.020		mg/Kg	1	3/16/2013 10:12:38 PM
Indeno(1,2,3-cd)pyrene	ND	0.0078	0.020		mg/Kg	1	3/16/2013 10:12:38 PM
Surr: Benzo(e)pyrene	114	0	44.9-129		%REC	1	3/16/2013 10:12:38 PM
Surr: N-hexadecane	110	0	45.4-126		%REC	1	3/16/2013 10:12:38 PM
CONDUCTANCE							Analyst: IDC
Specific Conductance	670	0	1.0		µmhos/c	1	3/22/2013 3:05:00 PM

Qualifiers:

- * Value exceeds Maximum Contaminant Level.
- E Value above quantitation range
- J Analyte detected below quantitation limits
- P Sample pH greater than 2
- RL Reporting Detection Limit

- B Analyte detected in the associated Method Blank
- H Holding times for preparation or analysis exceeded
- ND Not Detected at the Reporting Limit
- R RPD outside accepted recovery limits
- S Spike Recovery outside accepted recovery limits

Hall Environmental Analysis Laboratory, Inc.

Analytical Report

Lab Order 1303601

Date Reported: 3/25/2013

CLIENT: Animas Environmental Services

Client Sample ID: DC-11 C-10

Project: K.M. DC-11

Collection Date: 3/14/2013 8:56:00 PM

Lab ID: 1303601-010

Matrix: SOIL

Received Date: 3/15/2013 10:00:00 AM

Analyses	Result	MDL	RL	Qual	Units	DF	Date Analyzed
----------	--------	-----	----	------	-------	----	---------------

EPA METHOD 8015B: DIESEL RANGE ORGANICS

Analyst: **MMD**

Diesel Range Organics (DRO)	ND	5.9	9.5		mg/Kg	1	3/16/2013 9:44:15 PM
Motor Oil Range Organics (MRO)	ND	48	48		mg/Kg	1	3/16/2013 9:44:15 PM
Surr: DNOP	116	0	72.4-120		%REC	1	3/16/2013 9:44:15 PM

EPA METHOD 8015B: GASOLINE RANGE

Analyst: **NSB**

Gasoline Range Organics (GRO)	ND	0.93	4.8		mg/Kg	1	3/18/2013 10:15:49 PM
Surr: BFB	88.9	0	84-116		%REC	1	3/18/2013 10:15:49 PM

EPA METHOD 8021B: VOLATILES

Analyst: **NSB**

Benzene	ND	0.0030	0.048		mg/Kg	1	3/18/2013 10:15:49 PM
Toluene	ND	0.0031	0.048		mg/Kg	1	3/18/2013 10:15:49 PM
Ethylbenzene	ND	0.0034	0.048		mg/Kg	1	3/18/2013 10:15:49 PM
Xylenes, Total	ND	0.011	0.096		mg/Kg	1	3/18/2013 10:15:49 PM
Surr: 4-Bromofluorobenzene	95.1	0	80-120		%REC	1	3/18/2013 10:15:49 PM

EPA METHOD 7471: MERCURY

Analyst: **TMG**

Mercury	0.016	0.0016	0.033	J	mg/kg	1	3/20/2013 1:30:32 PM
---------	-------	--------	-------	---	-------	---	----------------------

EPA METHOD 6010B: SOIL METALS

Analyst: **ELS**

Arsenic	ND	6.3	25		mg/Kg	10	3/24/2013 10:47:30 AM
Barium	210	0.61	1.0		mg/Kg	10	3/24/2013 10:47:30 AM
Cadmium	ND	0.27	1.0		mg/Kg	10	3/24/2013 10:47:30 AM
Chromium	11	1.2	3.0		mg/Kg	10	3/24/2013 10:47:30 AM
Copper	6.6	2.3	3.0		mg/Kg	10	3/24/2013 10:47:30 AM
Lead	4.3	2.2	2.5		mg/Kg	10	3/24/2013 10:47:30 AM
Nickel	10	1.7	5.0		mg/Kg	10	3/24/2013 10:47:30 AM
Selenium	ND	14	25		mg/Kg	10	3/24/2013 10:47:30 AM
Silver	ND	0.35	2.5		mg/Kg	10	3/24/2013 10:47:30 AM
Zinc	29	10	25		mg/Kg	10	3/24/2013 10:47:30 AM

SAR SOLUBLE CATIONS

Analyst: **ELS**

Calcium	110	0.49	1.0		mg/L	1	3/24/2013 11:02:00 AM
Magnesium	27	0.34	1.0		mg/L	1	3/24/2013 11:02:00 AM
Sodium	87	0.88	1.0		mg/L	1	3/24/2013 11:02:00 AM
Sodium Adsorption Ratio	1.9	0	0			1	3/24/2013 11:02:00 AM

EPA METHOD 8270C: PAHS

Analyst: **JDC**

Naphthalene	ND	0.0043	0.020		mg/Kg	1	3/16/2013 10:35:49 PM
Acenaphthene	ND	0.0058	0.020		mg/Kg	1	3/16/2013 10:35:49 PM
Fluorene	ND	0.0041	0.020		mg/Kg	1	3/16/2013 10:35:49 PM
Anthracene	ND	0.0032	0.020		mg/Kg	1	3/16/2013 10:35:49 PM
Fluoranthene	ND	0.0036	0.020		mg/Kg	1	3/16/2013 10:35:49 PM
Pyrene	ND	0.0049	0.020		mg/Kg	1	3/16/2013 10:35:49 PM
Benz(a)anthracene	ND	0.0057	0.020		mg/Kg	1	3/16/2013 10:35:49 PM
Chrysene	ND	0.0038	0.020		mg/Kg	1	3/16/2013 10:35:49 PM

Qualifiers:

- * Value exceeds Maximum Contaminant Level.
- E Value above quantitation range
- J Analyte detected below quantitation limits
- P Sample pH greater than 2
- RL Reporting Detection Limit

- B Analyte detected in the associated Method Blank
- H Holding times for preparation or analysis exceeded
- ND Not Detected at the Reporting Limit
- R RPD outside accepted recovery limits
- S Spike Recovery outside accepted recovery limits

Hall Environmental Analysis Laboratory, Inc.**CLIENT:** Animas Environmental Services**Client Sample ID:** DC-11 C-10**Project:** K.M. DC-11**Collection Date:** 3/14/2013 8:56:00 PM**Lab ID:** 1303601-010**Matrix:** SOIL**Received Date:** 3/15/2013 10:00:00 AM

Analyses	Result	MDL	RL	Qual	Units	DF	Date Analyzed
EPA METHOD 8270C: PAHS							Analyst: JDC
Benzo(b)fluoranthene	ND	0.0047	0.020		mg/Kg	1	3/16/2013 10:35:49 PM
Benzo(k)fluoranthene	ND	0.0058	0.020		mg/Kg	1	3/16/2013 10:35:49 PM
Benzo(a)pyrene	ND	0.0039	0.020		mg/Kg	1	3/16/2013 10:35:49 PM
Dibenz(a,h)anthracene	ND	0.0039	0.020		mg/Kg	1	3/16/2013 10:35:49 PM
Indeno(1,2,3-cd)pyrene	ND	0.0078	0.020		mg/Kg	1	3/16/2013 10:35:49 PM
Surr: Benzo(e)pyrene	112	0	44.9-129		%REC	1	3/16/2013 10:35:49 PM
Surr: N-hexadecane	117	0	45.4-126		%REC	1	3/16/2013 10:35:49 PM
CONDUCTANCE							Analyst: IDC
Specific Conductance	800	0	1.0		µmhos/c	1	3/22/2013 3:05:00 PM

Qualifiers:

- * Value exceeds Maximum Contaminant Level.
- E Value above quantitation range
- J Analyte detected below quantitation limits
- P Sample pH greater than 2
- RL Reporting Detection Limit

- B Analyte detected in the associated Method Blank
- H Holding times for preparation or analysis exceeded
- ND Not Detected at the Reporting Limit
- R RPD outside accepted recovery limits
- S Spike Recovery outside accepted recovery limits

Hall Environmental Analysis Laboratory, Inc.

Analytical Report

Lab Order 1303601

Date Reported: 3/25/2013

CLIENT: Animas Environmental Services

Client Sample ID: DC-11 C-11

Project: K.M. DC-11

Collection Date: 3/14/2013 9:11:00 PM

Lab ID: 1303601-011

Matrix: SOIL

Received Date: 3/15/2013 10:00:00 AM

Analyses	Result	MDL	RL	Qual	Units	DF	Date Analyzed
----------	--------	-----	----	------	-------	----	---------------

EPA METHOD 8015B: DIESEL RANGE ORGANICS

Analyst: **MMD**

Diesel Range Organics (DRO)	ND	6.5	10		mg/Kg	1	3/16/2013 10:05:58 PM
Motor Oil Range Organics (MRO)	ND	52	52		mg/Kg	1	3/16/2013 10:05:58 PM
Surr: DNOP	110	0	72.4-120		%REC	1	3/16/2013 10:05:58 PM

EPA METHOD 8015B: GASOLINE RANGE

Analyst: **NSB**

Gasoline Range Organics (GRO)	ND	0.92	4.8		mg/Kg	1	3/18/2013 10:45:56 PM
Surr: BFB	89.7	0	84-116		%REC	1	3/18/2013 10:45:56 PM

EPA METHOD 8021B: VOLATILES

Analyst: **NSB**

Benzene	ND	0.0030	0.048		mg/Kg	1	3/18/2013 10:45:56 PM
Toluene	ND	0.0031	0.048		mg/Kg	1	3/18/2013 10:45:56 PM
Ethylbenzene	ND	0.0033	0.048		mg/Kg	1	3/18/2013 10:45:56 PM
Xylenes, Total	ND	0.011	0.096		mg/Kg	1	3/18/2013 10:45:56 PM
Surr: 4-Bromofluorobenzene	96.8	0	80-120		%REC	1	3/18/2013 10:45:56 PM

EPA METHOD 7471: MERCURY

Analyst: **TMG**

Mercury	0.012	0.0016	0.033	J	mg/kg	1	3/20/2013 1:32:22 PM
---------	-------	--------	-------	---	-------	---	----------------------

EPA METHOD 6010B: SOIL METALS

Analyst: **JLF**

Arsenic	ND	3.1	13		mg/Kg	5	3/22/2013 8:44:08 PM
Barium	160	0.30	0.50		mg/Kg	5	3/22/2013 8:44:08 PM
Cadmium	ND	0.14	0.50		mg/Kg	5	3/22/2013 8:44:08 PM
Chromium	12	0.59	1.5		mg/Kg	5	3/22/2013 8:44:08 PM
Copper	6.6	1.2	1.5		mg/Kg	5	3/22/2013 8:44:08 PM
Lead	4.6	1.1	1.3		mg/Kg	5	3/22/2013 8:44:08 PM
Nickel	10	0.83	2.5		mg/Kg	5	3/22/2013 8:44:08 PM
Selenium	ND	7.0	13		mg/Kg	5	3/22/2013 8:44:08 PM
Silver	ND	0.18	1.3		mg/Kg	5	3/22/2013 8:44:08 PM
Zinc	33	5.0	13		mg/Kg	5	3/22/2013 8:44:08 PM

SAR SOLUBLE CATIONS

Analyst: **ELS**

Calcium	61	0.49	1.0		mg/L	1	3/24/2013 11:02:00 AM
Magnesium	17	0.34	1.0		mg/L	1	3/24/2013 11:02:00 AM
Sodium	18	0.88	1.0		mg/L	1	3/24/2013 11:02:00 AM
Sodium Adsorption Ratio	0.53	0	0			1	3/24/2013 11:02:00 AM

EPA METHOD 8270C: PAHS

Analyst: **JDC**

Naphthalene	ND	0.0044	0.020		mg/Kg	1	3/16/2013 10:59:00 PM
Acenaphthene	ND	0.0058	0.020		mg/Kg	1	3/16/2013 10:59:00 PM
Fluorene	ND	0.0041	0.020		mg/Kg	1	3/16/2013 10:59:00 PM
Anthracene	ND	0.0032	0.020		mg/Kg	1	3/16/2013 10:59:00 PM
Fluoranthene	ND	0.0036	0.020		mg/Kg	1	3/16/2013 10:59:00 PM
Pyrene	ND	0.0049	0.020		mg/Kg	1	3/16/2013 10:59:00 PM
Benz(a)anthracene	ND	0.0057	0.020		mg/Kg	1	3/16/2013 10:59:00 PM
Chrysene	ND	0.0038	0.020		mg/Kg	1	3/16/2013 10:59:00 PM

Qualifiers:

- * Value exceeds Maximum Contaminant Level.
- E Value above quantitation range
- J Analyte detected below quantitation limits
- P Sample pH greater than 2
- RL Reporting Detection Limit

- B Analyte detected in the associated Method Blank
- H Holding times for preparation or analysis exceeded
- ND Not Detected at the Reporting Limit
- R RPD outside accepted recovery limits
- S Spike Recovery outside accepted recovery limits

Hall Environmental Analysis Laboratory, Inc.**CLIENT:** Animas Environmental Services**Client Sample ID:** DC-11 C-11**Project:** K.M. DC-11**Collection Date:** 3/14/2013 9:11:00 PM**Lab ID:** 1303601-011**Matrix:** SOIL**Received Date:** 3/15/2013 10:00:00 AM

Analyses	Result	MDL	RL	Qual	Units	DF	Date Analyzed
EPA METHOD 8270C: PAHS							Analyst: JDC
Benzo(b)fluoranthene	ND	0.0048	0.020		mg/Kg	1	3/16/2013 10:59:00 PM
Benzo(k)fluoranthene	ND	0.0058	0.020		mg/Kg	1	3/16/2013 10:59:00 PM
Benzo(a)pyrene	ND	0.0039	0.020		mg/Kg	1	3/16/2013 10:59:00 PM
Dibenz(a,h)anthracene	ND	0.0039	0.020		mg/Kg	1	3/16/2013 10:59:00 PM
Indeno(1,2,3-cd)pyrene	ND	0.0079	0.020		mg/Kg	1	3/16/2013 10:59:00 PM
Surr: Benzo(e)pyrene	127	0	44.9-129		%REC	1	3/16/2013 10:59:00 PM
Surr: N-hexadecane	124	0	45.4-126		%REC	1	3/16/2013 10:59:00 PM
CONDUCTANCE							Analyst: IDC
Specific Conductance	560	0	1.0		µmhos/c	1	3/22/2013 4:19:00 PM

Qualifiers:

- * Value exceeds Maximum Contaminant Level.
- E Value above quantitation range
- J Analyte detected below quantitation limits
- P Sample pH greater than 2
- RL Reporting Detection Limit

- B Analyte detected in the associated Method Blank
- H Holding times for preparation or analysis exceeded
- ND Not Detected at the Reporting Limit
- R RPD outside accepted recovery limits
- S Spike Recovery outside accepted recovery limits

Hall Environmental Analysis Laboratory, Inc.

Analytical Report

Lab Order 1303601

Date Reported: 3/25/2013

CLIENT: Animas Environmental Services

Client Sample ID: DC-11 C-12

Project: K.M. DC-11

Collection Date: 3/14/2013 9:20:00 PM

Lab ID: 1303601-012

Matrix: SOIL

Received Date: 3/15/2013 10:00:00 AM

Analyses	Result	MDL	RL	Qual	Units	DF	Date Analyzed
----------	--------	-----	----	------	-------	----	---------------

EPA METHOD 8015B: DIESEL RANGE ORGANICS

Analyst: **MMD**

Diesel Range Organics (DRO)	ND	6.1	9.9		mg/Kg	1	3/16/2013 10:27:29 PM
Motor Oil Range Organics (MRO)	ND	49	49		mg/Kg	1	3/16/2013 10:27:29 PM
Surr: DNOP	114	0	72.4-120		%REC	1	3/16/2013 10:27:29 PM

EPA METHOD 8015B: GASOLINE RANGE

Analyst: **NSB**

Gasoline Range Organics (GRO)	ND	0.91	4.7		mg/Kg	1	3/18/2013 11:16:00 PM
Surr: BFB	89.9	0	84-116		%REC	1	3/18/2013 11:16:00 PM

EPA METHOD 8021B: VOLATILES

Analyst: **NSB**

Benzene	ND	0.0029	0.047		mg/Kg	1	3/18/2013 11:16:00 PM
Toluene	ND	0.0030	0.047		mg/Kg	1	3/18/2013 11:16:00 PM
Ethylbenzene	ND	0.0033	0.047		mg/Kg	1	3/18/2013 11:16:00 PM
Xylenes, Total	ND	0.011	0.094		mg/Kg	1	3/18/2013 11:16:00 PM
Surr: 4-Bromofluorobenzene	96.8	0	80-120		%REC	1	3/18/2013 11:16:00 PM

EPA METHOD 7471: MERCURY

Analyst: **TMG**

Mercury	0.022	0.0016	0.033	J	mg/kg	1	3/20/2013 1:34:12 PM
---------	-------	--------	-------	---	-------	---	----------------------

EPA METHOD 6010B: SOIL METALS

Analyst: **JLF**

Arsenic	1.5	1.3	5.0	J	mg/Kg	2	3/22/2013 8:48:56 PM
Barium	140	0.61	1.0		mg/Kg	10	3/24/2013 10:49:52 AM
Cadmium	ND	0.054	0.20		mg/Kg	2	3/22/2013 8:48:56 PM
Chromium	7.5	0.24	0.60		mg/Kg	2	3/22/2013 8:48:56 PM
Copper	6.1	0.46	0.60		mg/Kg	2	3/22/2013 8:48:56 PM
Lead	5.3	0.44	0.50		mg/Kg	2	3/22/2013 8:48:56 PM
Nickel	9.6	0.33	1.0		mg/Kg	2	3/22/2013 8:48:56 PM
Selenium	ND	2.8	5.0		mg/Kg	2	3/22/2013 8:48:56 PM
Silver	ND	0.071	0.50		mg/Kg	2	3/22/2013 8:48:56 PM
Zinc	33	2.0	5.0		mg/Kg	2	3/22/2013 8:48:56 PM

SAR SOLUBLE CATIONS

Analyst: **ELS**

Calcium	150	0.49	1.0		mg/L	1	3/24/2013 11:02:00 AM
Magnesium	40	0.34	1.0		mg/L	1	3/24/2013 11:02:00 AM
Sodium	150	0.88	1.0		mg/L	1	3/24/2013 11:02:00 AM
Sodium Adsorption Ratio	2.8	0	0			1	3/24/2013 11:02:00 AM

EPA METHOD 8270C: PAHS

Analyst: **JDC**

Naphthalene	ND	0.0044	0.020		mg/Kg	1	3/16/2013 11:22:10 PM
Acenaphthene	ND	0.0058	0.020		mg/Kg	1	3/16/2013 11:22:10 PM
Fluorene	ND	0.0041	0.020		mg/Kg	1	3/16/2013 11:22:10 PM
Anthracene	ND	0.0032	0.020		mg/Kg	1	3/16/2013 11:22:10 PM
Fluoranthene	ND	0.0036	0.020		mg/Kg	1	3/16/2013 11:22:10 PM
Pyrene	ND	0.0049	0.020		mg/Kg	1	3/16/2013 11:22:10 PM
Benz(a)anthracene	ND	0.0057	0.020		mg/Kg	1	3/16/2013 11:22:10 PM
Chrysene	ND	0.0038	0.020		mg/Kg	1	3/16/2013 11:22:10 PM

Qualifiers:

- * Value exceeds Maximum Contaminant Level.
- E Value above quantitation range
- J Analyte detected below quantitation limits
- P Sample pH greater than 2
- RL Reporting Detection Limit

- B Analyte detected in the associated Method Blank
- H Holding times for preparation or analysis exceeded
- ND Not Detected at the Reporting Limit
- R RPD outside accepted recovery limits
- S Spike Recovery outside accepted recovery limits

Hall Environmental Analysis Laboratory, Inc.

CLIENT: Animas Environmental Services

Client Sample ID: DC-11 C-12

Project: K.M. DC-11

Collection Date: 3/14/2013 9:20:00 PM

Lab ID: 1303601-012

Matrix: SOIL

Received Date: 3/15/2013 10:00:00 AM

Analyses	Result	MDL	RL	Qual	Units	DF	Date Analyzed
EPA METHOD 8270C: PAHS							Analyst: JDC
Benzo(b)fluoranthene	ND	0.0048	0.020		mg/Kg	1	3/16/2013 11:22:10 PM
Benzo(k)fluoranthene	ND	0.0058	0.020		mg/Kg	1	3/16/2013 11:22:10 PM
Benzo(a)pyrene	ND	0.0039	0.020		mg/Kg	1	3/16/2013 11:22:10 PM
Dibenz(a,h)anthracene	ND	0.0039	0.020		mg/Kg	1	3/16/2013 11:22:10 PM
Indeno(1,2,3-cd)pyrene	ND	0.0079	0.020		mg/Kg	1	3/16/2013 11:22:10 PM
Surr: Benzo(e)pyrene	87.8	0	44.9-129		%REC	1	3/16/2013 11:22:10 PM
Surr: N-hexadecane	92.9	0	45.4-126		%REC	1	3/16/2013 11:22:10 PM
CONDUCTANCE							Analyst: IDC
Specific Conductance	670	0	1.0		µmhos/c	1	3/22/2013 4:19:00 PM

Qualifiers:

- * Value exceeds Maximum Contaminant Level.
- E Value above quantitation range
- J Analyte detected below quantitation limits
- P Sample pH greater than 2
- RL Reporting Detection Limit

- B Analyte detected in the associated Method Blank
- H Holding times for preparation or analysis exceeded
- ND Not Detected at the Reporting Limit
- R RPD outside accepted recovery limits
- S Spike Recovery outside accepted recovery limits

Hall Environmental Analysis Laboratory, Inc.

Analytical Report

Lab Order 1303601

Date Reported: 3/25/2013

CLIENT: Animas Environmental Services

Client Sample ID: DC-11 C-13

Project: K.M. DC-11

Collection Date: 3/14/2013 9:13:00 PM

Lab ID: 1303601-013

Matrix: SOIL

Received Date: 3/15/2013 10:00:00 AM

Analyses	Result	MDL	RL	Qual	Units	DF	Date Analyzed
----------	--------	-----	----	------	-------	----	---------------

EPA METHOD 8015B: DIESEL RANGE ORGANICS

Analyst: **MMD**

Diesel Range Organics (DRO)	ND	6.0	9.7		mg/Kg	1	3/16/2013 10:49:11 PM
Motor Oil Range Organics (MRO)	ND	48	48		mg/Kg	1	3/16/2013 10:49:11 PM
Surr: DNOP	115	0	72.4-120		%REC	1	3/16/2013 10:49:11 PM

EPA METHOD 8015B: GASOLINE RANGE

Analyst: **NSB**

Gasoline Range Organics (GRO)	ND	0.93	4.8		mg/Kg	1	3/18/2013 11:46:02 PM
Surr: BFB	90.9	0	84-116		%REC	1	3/18/2013 11:46:02 PM

EPA METHOD 8021B: VOLATILES

Analyst: **NSB**

Benzene	ND	0.0030	0.048		mg/Kg	1	3/18/2013 11:46:02 PM
Toluene	ND	0.0031	0.048		mg/Kg	1	3/18/2013 11:46:02 PM
Ethylbenzene	ND	0.0034	0.048		mg/Kg	1	3/18/2013 11:46:02 PM
Xylenes, Total	ND	0.011	0.096		mg/Kg	1	3/18/2013 11:46:02 PM
Surr: 4-Bromofluorobenzene	97.0	0	80-120		%REC	1	3/18/2013 11:46:02 PM

EPA METHOD 7471: MERCURY

Analyst: **TMG**

Mercury	0.0099	0.0016	0.033	J	mg/kg	1	3/20/2013 1:35:57 PM
---------	--------	--------	-------	---	-------	---	----------------------

EPA METHOD 6010B: SOIL METALS

Analyst: **JLF**

Arsenic	ND	3.1	12		mg/Kg	5	3/22/2013 9:06:52 PM
Barium	140	0.30	0.50		mg/Kg	5	3/22/2013 9:06:52 PM
Cadmium	ND	0.14	0.50		mg/Kg	5	3/22/2013 9:06:52 PM
Chromium	11	0.59	1.5		mg/Kg	5	3/22/2013 9:06:52 PM
Copper	6.4	1.2	1.5		mg/Kg	5	3/22/2013 9:06:52 PM
Lead	4.4	1.1	1.2		mg/Kg	5	3/22/2013 9:06:52 PM
Nickel	8.9	0.83	2.5		mg/Kg	5	3/22/2013 9:06:52 PM
Selenium	ND	7.0	12		mg/Kg	5	3/22/2013 9:06:52 PM
Silver	ND	0.18	1.2		mg/Kg	5	3/22/2013 9:06:52 PM
Zinc	27	5.0	12		mg/Kg	5	3/22/2013 9:06:52 PM

SAR SOLUBLE CATIONS

Analyst: **ELS**

Calcium	61	0.49	1.0		mg/L	1	3/24/2013 11:02:00 AM
Magnesium	17	0.34	1.0		mg/L	1	3/24/2013 11:02:00 AM
Sodium	15	0.88	1.0		mg/L	1	3/24/2013 11:02:00 AM
Sodium Adsorption Ratio	0.45	0	0			1	3/24/2013 11:02:00 AM

EPA METHOD 8270C: PAHS

Analyst: **JDC**

Naphthalene	ND	0.0044	0.020		mg/Kg	1	3/18/2013 1:34:21 PM
Acenaphthene	ND	0.0058	0.020		mg/Kg	1	3/18/2013 1:34:21 PM
Fluorene	ND	0.0041	0.020		mg/Kg	1	3/18/2013 1:34:21 PM
Anthracene	ND	0.0032	0.020		mg/Kg	1	3/18/2013 1:34:21 PM
Fluoranthene	ND	0.0036	0.020		mg/Kg	1	3/18/2013 1:34:21 PM
Pyrene	ND	0.0049	0.020		mg/Kg	1	3/18/2013 1:34:21 PM
Benz(a)anthracene	ND	0.0057	0.020		mg/Kg	1	3/18/2013 1:34:21 PM
Chrysene	ND	0.0038	0.020		mg/Kg	1	3/18/2013 1:34:21 PM

Qualifiers:

- * Value exceeds Maximum Contaminant Level.
- E Value above quantitation range
- J Analyte detected below quantitation limits
- P Sample pH greater than 2
- RL Reporting Detection Limit

- B Analyte detected in the associated Method Blank
- H Holding times for preparation or analysis exceeded
- ND Not Detected at the Reporting Limit
- R RPD outside accepted recovery limits
- S Spike Recovery outside accepted recovery limits

Hall Environmental Analysis Laboratory, Inc.**CLIENT:** Animas Environmental Services**Client Sample ID:** DC-11 C-13**Project:** K.M. DC-11**Collection Date:** 3/14/2013 9:13:00 PM**Lab ID:** 1303601-013**Matrix:** SOIL**Received Date:** 3/15/2013 10:00:00 AM

Analyses	Result	MDL	RL	Qual	Units	DF	Date Analyzed
----------	--------	-----	----	------	-------	----	---------------

EPA METHOD 8270C: PAHS

Analyst: JDC

Benzo(b)fluoranthene	ND	0.0048	0.020		mg/Kg	1	3/18/2013 1:34:21 PM
Benzo(k)fluoranthene	ND	0.0058	0.020		mg/Kg	1	3/18/2013 1:34:21 PM
Benzo(a)pyrene	ND	0.0039	0.020		mg/Kg	1	3/18/2013 1:34:21 PM
Dibenz(a,h)anthracene	ND	0.0039	0.020		mg/Kg	1	3/18/2013 1:34:21 PM
Indeno(1,2,3-cd)pyrene	ND	0.0079	0.020		mg/Kg	1	3/18/2013 1:34:21 PM
Surr: Benzo(e)pyrene	84.5	0	44.9-129		%REC	1	3/18/2013 1:34:21 PM
Surr: N-hexadecane	81.8	0	45.4-126		%REC	1	3/18/2013 1:34:21 PM

CONDUCTANCE

Analyst: IDC

Specific Conductance	450	0	1.0		µmhos/c	1	3/22/2013 4:19:00 PM
----------------------	-----	---	-----	--	---------	---	----------------------

Qualifiers:

- * Value exceeds Maximum Contaminant Level.
- E Value above quantitation range
- J Analyte detected below quantitation limits
- P Sample pH greater than 2
- RL Reporting Detection Limit

- B Analyte detected in the associated Method Blank
- H Holding times for preparation or analysis exceeded
- ND Not Detected at the Reporting Limit
- R RPD outside accepted recovery limits
- S Spike Recovery outside accepted recovery limits

Hall Environmental Analysis Laboratory, Inc.

Analytical Report

Lab Order 1303601

Date Reported: 3/25/2013

CLIENT: Animas Environmental Services

Client Sample ID: DC-11 Background

Project: K.M. DC-11

Collection Date: 3/14/2013 9:27:00 PM

Lab ID: 1303601-014

Matrix: SOIL

Received Date: 3/15/2013 10:00:00 AM

Analyses	Result	MDL	RL	Qual	Units	DF	Date Analyzed
----------	--------	-----	----	------	-------	----	---------------

EPA METHOD 8015B: DIESEL RANGE ORGANICS

Analyst: **MMD**

Diesel Range Organics (DRO)	ND	6.5	10		mg/Kg	1	3/16/2013 11:10:52 PM
Motor Oil Range Organics (MRO)	ND	52	52		mg/Kg	1	3/16/2013 11:10:52 PM
Surr: DNOP	112	0	72.4-120		%REC	1	3/16/2013 11:10:52 PM

EPA METHOD 8015B: GASOLINE RANGE

Analyst: **NSB**

Gasoline Range Organics (GRO)	ND	0.92	4.8		mg/Kg	1	3/19/2013 12:15:57 AM
Surr: BFB	90.3	0	84-116		%REC	1	3/19/2013 12:15:57 AM

EPA METHOD 8021B: VOLATILES

Analyst: **NSB**

Benzene	ND	0.0030	0.048		mg/Kg	1	3/19/2013 12:15:57 AM
Toluene	ND	0.0031	0.048		mg/Kg	1	3/19/2013 12:15:57 AM
Ethylbenzene	ND	0.0033	0.048		mg/Kg	1	3/19/2013 12:15:57 AM
Xylenes, Total	ND	0.011	0.096		mg/Kg	1	3/19/2013 12:15:57 AM
Surr: 4-Bromofluorobenzene	96.2	0	80-120		%REC	1	3/19/2013 12:15:57 AM

EPA METHOD 7471: MERCURY

Analyst: **TMG**

Mercury	0.0078	0.0016	0.033	J	mg/kg	1	3/20/2013 1:37:42 PM
---------	--------	--------	-------	---	-------	---	----------------------

EPA METHOD 6010B: SOIL METALS

Analyst: **JLF**

Arsenic	3.8	3.1	12	J	mg/Kg	5	3/22/2013 9:14:01 PM
Barium	130	0.30	0.50		mg/Kg	5	3/22/2013 9:14:01 PM
Cadmium	ND	0.14	0.50		mg/Kg	5	3/22/2013 9:14:01 PM
Chromium	11	0.59	1.5		mg/Kg	5	3/22/2013 9:14:01 PM
Copper	5.7	1.2	1.5		mg/Kg	5	3/22/2013 9:14:01 PM
Lead	3.3	1.1	1.2		mg/Kg	5	3/22/2013 9:14:01 PM
Nickel	8.5	0.83	2.5		mg/Kg	5	3/22/2013 9:14:01 PM
Selenium	ND	7.0	12		mg/Kg	5	3/22/2013 9:14:01 PM
Silver	ND	0.18	1.2		mg/Kg	5	3/22/2013 9:14:01 PM
Zinc	29	5.0	12		mg/Kg	5	3/22/2013 9:14:01 PM

SAR SOLUBLE CATIONS

Analyst: **ELS**

Calcium	46	0.49	1.0		mg/L	1	3/24/2013 11:02:00 AM
Magnesium	19	0.34	1.0		mg/L	1	3/24/2013 11:02:00 AM
Sodium	2.9	0.88	1.0		mg/L	1	3/24/2013 11:02:00 AM
Sodium Adsorption Ratio	0.090	0	0			1	3/24/2013 11:02:00 AM

EPA METHOD 8270C: PAHS

Analyst: **JDC**

Naphthalene	ND	0.0043	0.020		mg/Kg	1	3/18/2013 2:45:10 PM
Acenaphthene	ND	0.0058	0.020		mg/Kg	1	3/18/2013 2:45:10 PM
Fluorene	ND	0.0041	0.020		mg/Kg	1	3/18/2013 2:45:10 PM
Anthracene	ND	0.0032	0.020		mg/Kg	1	3/18/2013 2:45:10 PM
Fluoranthene	ND	0.0035	0.020		mg/Kg	1	3/18/2013 2:45:10 PM
Pyrene	ND	0.0048	0.020		mg/Kg	1	3/18/2013 2:45:10 PM
Benz(a)anthracene	ND	0.0057	0.020		mg/Kg	1	3/18/2013 2:45:10 PM
Chrysene	ND	0.0038	0.020		mg/Kg	1	3/18/2013 2:45:10 PM

Qualifiers:

- * Value exceeds Maximum Contaminant Level.
- E Value above quantitation range
- J Analyte detected below quantitation limits
- P Sample pH greater than 2
- RL Reporting Detection Limit

- B Analyte detected in the associated Method Blank
- H Holding times for preparation or analysis exceeded
- ND Not Detected at the Reporting Limit
- R RPD outside accepted recovery limits
- S Spike Recovery outside accepted recovery limits

Hall Environmental Analysis Laboratory, Inc.**CLIENT:** Animas Environmental Services**Client Sample ID:** DC-11 Background**Project:** K.M. DC-11**Collection Date:** 3/14/2013 9:27:00 PM**Lab ID:** 1303601-014**Matrix:** SOIL**Received Date:** 3/15/2013 10:00:00 AM

Analyses	Result	MDL	RL	Qual	Units	DF	Date Analyzed
----------	--------	-----	----	------	-------	----	---------------

EPA METHOD 8270C: PAHS

Analyst: JDC

Benzo(b)fluoranthene	ND	0.0047	0.020		mg/Kg	1	3/18/2013 2:45:10 PM
Benzo(k)fluoranthene	ND	0.0058	0.020		mg/Kg	1	3/18/2013 2:45:10 PM
Benzo(a)pyrene	ND	0.0039	0.020		mg/Kg	1	3/18/2013 2:45:10 PM
Dibenz(a,h)anthracene	ND	0.0039	0.020		mg/Kg	1	3/18/2013 2:45:10 PM
Indeno(1,2,3-cd)pyrene	ND	0.0078	0.020		mg/Kg	1	3/18/2013 2:45:10 PM
Surr: Benzo(e)pyrene	74.9	0	44.9-129		%REC	1	3/18/2013 2:45:10 PM
Surr: N-hexadecane	80.8	0	45.4-126		%REC	1	3/18/2013 2:45:10 PM

CONDUCTANCE

Analyst: IDC

Specific Conductance	410	0	1.0		µmhos/c	1	3/22/2013 4:19:00 PM
----------------------	-----	---	-----	--	---------	---	----------------------

Qualifiers:

- * Value exceeds Maximum Contaminant Level.
- E Value above quantitation range
- J Analyte detected below quantitation limits
- P Sample pH greater than 2
- RL Reporting Detection Limit

- B Analyte detected in the associated Method Blank
- H Holding times for preparation or analysis exceeded
- ND Not Detected at the Reporting Limit
- R RPD outside accepted recovery limits
- S Spike Recovery outside accepted recovery limits



12065 Lebanon Rd.
Mt. Juliet, TN 37122
(615) 758-5858
1-800-767-5859
Fax (615) 758-5859

Tax I.D. 62-0814289

Est. 1970

REPORT OF ANALYSIS

March 22, 2013

Anne Thorne
Hall Environmental Analysis Laborat
4901 Hawkins NE
Albuquerque, NM 87109

ESC Sample # : L625417-01

Date Received : March 16, 2013
Description :

Site ID :

Sample ID : 1303601-001B DC-11 C-1

Project # :

Collected By :
Collection Date : 03/14/13 08:12

Parameter	Result	Det. Limit	Units	Method	Date	Dil.
Chromium, Hexavalent	BDL	2.0	mg/kg	3060A/7196A	03/21/13	1
ORP	190		mV	2580 B-2011	03/20/13	1
pH	8.3		su	9045D	03/22/13	1

BDL - Below Detection Limit

Det. Limit - Practical Quantitation Limit(PQL)

Note:

The reported analytical results relate only to the sample submitted.

This report shall not be reproduced, except in full, without the written approval from ESC.

Reported: 03/22/13 16:03 Printed: 03/22/13 16:04
L625417-01 (PH) - 8.3@20.1c



12065 Lebanon Rd.
Mt. Juliet, TN 37122
(615) 758-5858
1-800-767-5859
Fax (615) 758-5859
Tax I.D. 62-0814289
Est. 1970

REPORT OF ANALYSIS

Anne Thorne
Hall Environmental Analysis Laborat
4901 Hawkins NE
Albuquerque, NM 87109

March 22, 2013

Date Received : March 16, 2013
Description :
Sample ID : 1303601-002B DC-11 C-2
Collected By :
Collection Date : 03/14/13 08:07

ESC Sample # : L625417-02

Site ID :

Project # :

Parameter	Result	Det. Limit	Units	Method	Date	Dil.
Chromium, Hexavalent	BDL	2.0	mg/kg	3060A/7196A	03/21/13	1
ORP	200		mV	2580 B-2011	03/20/13	1
pH	8.2		su	9045D	03/22/13	1

BDL - Below Detection Limit

Det. Limit - Practical Quantitation Limit(PQL)

Note:

The reported analytical results relate only to the sample submitted.

This report shall not be reproduced, except in full, without the written approval from ESC.

Reported: 03/22/13 16:03 Printed: 03/22/13 16:04
L625417-02 (PH) - 8.2@19.7c



12065 Lebanon Rd.
Mt. Juliet, TN 37122
(615) 758-5858
1-800-767-5859
Fax (615) 758-5859
Tax I.D. 62-0814289
Est. 1970

REPORT OF ANALYSIS

March 22, 2013

Anne Thorne
Hall Environmental Analysis Laborat
4901 Hawkins NE
Albuquerque, NM 87109

Date Received : March 16, 2013
Description :
Sample ID : 1303601-003B DC-11 C-3
Collected By :
Collection Date : 03/14/13 08:16

ESC Sample # : L625417-03
Site ID :
Project # :

Parameter	Result	Det. Limit	Units	Method	Date	Dil.
Chromium, Hexavalent	BDL	2.0	mg/kg	3060A/7196A	03/21/13	1
ORP	190		mV	2580 B-2011	03/20/13	1
pH	8.2		su	9045D	03/22/13	1

BDL - Below Detection Limit

Det. Limit - Practical Quantitation Limit (PQL)

Note:

The reported analytical results relate only to the sample submitted.
This report shall not be reproduced, except in full, without the written approval from ESC.

Reported: 03/22/13 16:03 Printed: 03/22/13 16:04
L625417-03 (PH) - 8.2@19.3c



12065 Lebanon Rd.
Mt. Juliet, TN 37122
(615) 758-5858
1-800-767-5859
Fax (615) 758-5859

Tax I.D. 62-0814289

Est. 1970

REPORT OF ANALYSIS

Anne Thorne
Hall Environmental Analysis Laborat
4901 Hawkins NE
Albuquerque, NM 87109

March 22, 2013

Date Received : March 16, 2013
Description :
Sample ID : 1303601-004B DC-11 C-4
Collected By :
Collection Date : 03/14/13 08:25

ESC Sample # : L625417-04

Site ID :

Project # :

Parameter	Result	Det. Limit	Units	Method	Date	Dil.
Chromium, Hexavalent	BDL	2.0	mg/kg	3060A/7196A	03/21/13	1
ORP	190		mV	2580 B-2011	03/20/13	1
pH	8.1		su	9045D	03/22/13	1

BDL - Below Detection Limit

Det. Limit - Practical Quantitation Limit(PQL)

Note:

The reported analytical results relate only to the sample submitted.

This report shall not be reproduced, except in full, without the written approval from ESC.

Reported: 03/22/13 16:03 Printed: 03/22/13 16:04
L625417-04 (PH) - 8.1@18.6c



12065 Lebanon Rd.
Mt. Juliet, TN 37122
(615) 758-5858
1-800-767-5859
Fax (615) 758-5859

Tax I.D. 62-0814289

Est. 1970

REPORT OF ANALYSIS

March 22, 2013

Anne Thorne
Hall Environmental Analysis Laborat
4901 Hawkins NE
Albuquerque, NM 87109

Date Received : March 16, 2013
Description :
Sample ID : 1303601-005B DC-11 C-5
Collected By :
Collection Date : 03/14/13 08:37

ESC Sample # : L625417-05

Site ID :

Project # :

Parameter	Result	Det. Limit	Units	Method	Date	Dil.
Chromium, Hexavalent	BDL	2.0	mg/kg	3060A/7196A	03/21/13	1
ORP	190		mV	2580 B-2011	03/20/13	1
pH	8.5		su	9045D	03/22/13	1

BDL - Below Detection Limit

Det. Limit - Practical Quantitation Limit (PQL)

Note:

The reported analytical results relate only to the sample submitted.

This report shall not be reproduced, except in full, without the written approval from ESC.

Reported: 03/22/13 16:03 Printed: 03/22/13 16:04
L625417-05 (PH) - 8.5@18.9c



12065 Lebanon Rd.
Mt. Juliet, TN 37122
(615) 758-5858
1-800-767-5859
Fax (615) 758-5859

Tax I.D. 62-0814289

Est. 1970

REPORT OF ANALYSIS

Anne Thorne
Hall Environmental Analysis Laborat
4901 Hawkins NE
Albuquerque, NM 87109

March 22, 2013

Date Received : March 16, 2013
Description :
Sample ID : 1303601-006B DC-11 C-6
Collected By :
Collection Date : 03/14/13 08:27

ESC Sample # : L625417-06

Site ID :

Project # :

Parameter	Result	Det. Limit	Units	Method	Date	Dil.
Chromium, Hexavalent	BDL	2.0	mg/kg	3060A/7196A	03/21/13	1
ORP	210		mV	2580 B-2011	03/20/13	1
pH	8.4		su	9045D	03/22/13	1

BDL - Below Detection Limit

Det. Limit - Practical Quantitation Limit (PQL)

Note:

The reported analytical results relate only to the sample submitted.

This report shall not be reproduced, except in full, without the written approval from ESC.

Reported: 03/22/13 16:03 Printed: 03/22/13 16:04
L625417-06 (PH) - 8.4@18.2c



12065 Lebanon Rd.
Mt. Juliet, TN 37122
(615) 758-5858
1-800-767-5859
Fax (615) 758-5859

Tax I.D. 62-0814289

Est. 1970

REPORT OF ANALYSIS

Anne Thorne
Hall Environmental Analysis Laborat
4901 Hawkins NE
Albuquerque, NM 87109

March 22, 2013

Date Received : March 16, 2013
Description :
Sample ID : 1303601-007B DC-11 C-7
Collected By :
Collection Date : 03/14/13 08:47

ESC Sample # : L625417-07

Site ID :

Project # :

Parameter	Result	Det. Limit	Units	Method	Date	Dil.
Chromium, Hexavalent	BDL	2.0	mg/kg	3060A/7196A	03/21/13	1
ORP	210		mV	2580 B-2011	03/20/13	1
pH	8.2		su	9045D	03/22/13	1

BDL - Below Detection Limit

Det. Limit - Practical Quantitation Limit (PQL)

Note:

The reported analytical results relate only to the sample submitted.

This report shall not be reproduced, except in full, without the written approval from ESC.

Reported: 03/22/13 16:03 Printed: 03/22/13 16:04
L625417-07 (PH) - 8.2@18.6c



12065 Lebanon Rd.
Mt. Juliet, TN 37122
(615) 758-5858
1-800-767-5859
Fax (615) 758-5859
Tax I.D. 62-0814289
Est. 1970

REPORT OF ANALYSIS

Anne Thorne
Hall Environmental Analysis Laborat
4901 Hawkins NE
Albuquerque, NM 87109

March 22, 2013

Date Received : March 16, 2013
Description :
Sample ID : 1303601-008B DC-11 C-8
Collected By :
Collection Date : 03/14/13 08:36

ESC Sample # : L625417-08

Site ID :

Project # :

Parameter	Result	Det. Limit	Units	Method	Date	Dil.
Chromium, Hexavalent	BDL	2.0	mg/kg	3060A/7196A	03/21/13	1
ORP	200		mV	2580 B-2011	03/20/13	1
pH	8.2		su	9045D	03/22/13	1

BDL - Below Detection Limit

Det. Limit - Practical Quantitation Limit (PQL)

Note:

The reported analytical results relate only to the sample submitted.

This report shall not be reproduced, except in full, without the written approval from ESC.

Reported: 03/22/13 16:03 Printed: 03/22/13 16:04
L625417-08 (PH) - 8.2@17.8c



12065 Lebanon Rd.
Mt. Juliet, TN 37122
(615) 758-5858
1-800-767-5859
Fax (615) 758-5859
Tax I.D. 62-0814289
Est. 1970

REPORT OF ANALYSIS

Anne Thorne
Hall Environmental Analysis Laborat
4901 Hawkins NE
Albuquerque, NM 87109

March 22, 2013

Date Received : March 16, 2013
Description :
Sample ID : 1303601-009B DC-11 C-9
Collected By :
Collection Date : 03/14/13 08:58

ESC Sample # : L625417-09
Site ID :
Project # :

Parameter	Result	Det. Limit	Units	Method	Date	Dil.
Chromium, Hexavalent	BDL	2.0	mg/kg	3060A/7196A	03/21/13	1
ORP	200		mV	2580 B-2011	03/20/13	1
pH	8.3		su	9045D	03/22/13	1

BDL - Below Detection Limit

Det. Limit - Practical Quantitation Limit (PQL)

Note:

The reported analytical results relate only to the sample submitted.

This report shall not be reproduced, except in full, without the written approval from ESC.

Reported: 03/22/13 16:03 Printed: 03/22/13 16:04
L625417-09 (PH) - 8.3@18.6c



12065 Lebanon Rd.
Mt. Juliet, TN 37122
(615) 758-5858
1-800-767-5859
Fax (615) 758-5859

Tax I.D. 62-0814289

Est. 1970

REPORT OF ANALYSIS

Anne Thorne
Hall Environmental Analysis Laborat
4901 Hawkins NE
Albuquerque, NM 87109

March 22, 2013

Date Received : March 16, 2013
Description :
Sample ID : 1303601-010B DC-11 C-10
Collected By :
Collection Date : 03/14/13 08:56

ESC Sample # : L625417-10

Site ID :

Project # :

Parameter	Result	Det. Limit	Units	Method	Date	Dil.
Chromium, Hexavalent	BDL	2.0	mg/kg	3060A/7196A	03/21/13	1
ORP	200		mV	2580 B-2011	03/20/13	1
pH	8.2		su	9045D	03/22/13	1

BDL - Below Detection Limit

Det. Limit - Practical Quantitation Limit(PQL)

Note:

The reported analytical results relate only to the sample submitted.

This report shall not be reproduced, except in full, without the written approval from ESC.

Reported: 03/22/13 16:03 Printed: 03/22/13 16:04
L625417-10 (PH) - 8.2@19.6c



12065 Lebanon Rd.
Mt. Juliet, TN 37122
(615) 758-5858
1-800-767-5859
Fax (615) 758-5859

Tax I.D. 62-0814289

Est. 1970

REPORT OF ANALYSIS

Anne Thorne
Hall Environmental Analysis Laborat
4901 Hawkins NE
Albuquerque, NM 87109

March 22, 2013

Date Received : March 16, 2013
Description :
Sample ID : 1303601-011B DC-11 C-11
Collected By :
Collection Date : 03/14/13 09:11

ESC Sample # : L625417-11

Site ID :

Project # :

Parameter	Result	Det. Limit	Units	Method	Date	Dil.
Chromium, Hexavalent	BDL	2.0	mg/kg	3060A/7196A	03/21/13	1
ORP	200		mV	2580 B-2011	03/20/13	1
pH	8.1		su	9045D	03/22/13	1

BDL - Below Detection Limit

Det. Limit - Practical Quantitation Limit (PQL)

Note:

The reported analytical results relate only to the sample submitted.

This report shall not be reproduced, except in full, without the written approval from ESC.

Reported: 03/22/13 16:03 Printed: 03/22/13 16:04
L625417-11 (PH) - 8.1019.1c



12065 Lebanon Rd.
Mt. Juliet, TN 37122
(615) 758-5858
1-800-767-5859
Fax (615) 758-5859

Tax I.D. 62-0814289

Est. 1970

REPORT OF ANALYSIS

Anne Thorne
Hall Environmental Analysis Laborat
4901 Hawkins NE
Albuquerque, NM 87109

March 22, 2013

Date Received : March 16, 2013
Description :
Sample ID : 1303601-012B DC-11 C-12
Collected By :
Collection Date : 03/14/13 09:20

ESC Sample # : L625417-12

Site ID :

Project # :

Parameter	Result	Det. Limit	Units	Method	Date	Dil.
Chromium, Hexavalent	BDL	2.0	mg/kg	3060A/7196A	03/21/13	1
ORP	210		mV	2580 B-2011	03/20/13	1
pH	8.1		su	9045D	03/22/13	1

BDL - Below Detection Limit

Det. Limit - Practical Quantitation Limit (PQL)

Note:

The reported analytical results relate only to the sample submitted.

This report shall not be reproduced, except in full, without the written approval from ESC.

Reported: 03/22/13 16:03 Printed: 03/22/13 16:04
L625417-12 (PH) - 8.1@17.9c



12065 Lebanon Rd.
Mt. Juliet, TN 37122
(615) 758-5858
1-800-767-5859
Fax (615) 758-5859

Tax I.D. 62-0814289

Est. 1970

REPORT OF ANALYSIS

Anne Thorne
Hall Environmental Analysis Laborat
4901 Hawkins NE
Albuquerque, NM 87109

March 22, 2013

Date Received : March 16, 2013
Description :
Sample ID : 1303601-013B DC-11 C-13
Collected By :
Collection Date : 03/14/13 09:13

ESC Sample # : L625417-13

Site ID :

Project # :

Parameter	Result	Det. Limit	Units	Method	Date	Dil.
Chromium, Hexavalent	BDL	2.0	mg/kg	3060A/7196A	03/21/13	1
ORP	200		mV	2580 B-2011	03/20/13	1
pH	8.2		su	9045D	03/22/13	1

BDL - Below Detection Limit

Det. Limit - Practical Quantitation Limit (PQL)

Note:

The reported analytical results relate only to the sample submitted.

This report shall not be reproduced, except in full, without the written approval from ESC.

Reported: 03/22/13 16:03 Printed: 03/22/13 16:04
L625417-13 (PH) - 8.2@19.5c



12065 Lebanon Rd.
Mt. Juliet, TN 37122
(615) 758-5858
1-800-767-5859
Fax (615) 758-5859

Tax I.D. 62-0814289

Est. 1970

REPORT OF ANALYSIS

Anne Thorne
Hall Environmental Analysis Laborat
4901 Hawkins NE
Albuquerque, NM 87109

March 22, 2013

Date Received : March 16, 2013
Description :
Sample ID : 1303601-014B DC-11 BACKGROUND
Collected By :
Collection Date : 03/14/13 09:27

ESC Sample # : L625417-14

Site ID :

Project # :

Parameter	Result	Det. Limit	Units	Method	Date	Dil.
Chromium, Hexavalent	BDL	2.0	mg/kg	3060A/7196A	03/21/13	1
ORP	200		mV	2580 B-2011	03/20/13	1
pH	7.7		su	9045D	03/22/13	1

BDL - Below Detection Limit

Det. Limit - Practical Quantitation Limit (PQL)

Note:

The reported analytical results relate only to the sample submitted.

This report shall not be reproduced, except in full, without the written approval from ESC.

Reported: 03/22/13 16:03 Printed: 03/22/13 16:04
L625417-14 (PH) - 7.7819.4c



YOUR LAB OF CHOICE

Hall Environmental Analysis Laboratory
Anne Thorne
4901 Hawkins NE

Albuquerque, NM 87109

Quality Assurance Report
Level II

L625417

12065 Lebanon Rd.
Mt. Juliet, TN 37122
(615) 758-5858
1-800-767-5859
Fax (615) 758-5859

Tax I.D. 62-0814289

Est. 1970

March 22, 2013

Analyte	Result	Laboratory Blank Units % Rec	Limit	Batch	Date Analyzed
Chromium, Hexavalent	< 2	mg/kg		WG651732	03/21/13 14:09

Analyte	Units	Result	Duplicate Duplicate	RPD	Limit	Ref Samp	Batch
ORP	mV	210.	220.	2.76	20	L625393-32	WG651792
ORP	mV	80.0	77.0	3.82	20	L625560-02	WG651792
Chromium, Hexavalent	mg/kg	0	0	0	20	L625417-06	WG651732
Chromium, Hexavalent	mg/kg	0	0	0	20	L625393-30	WG651732
pH	su	8.30	8.30	0.241	1	L625417-01	WG651973
pH	su	6.80	6.80	0.147	1	L625813-03	WG651973

Analyte	Units	Laboratory Control Known Val	Sample Result	% Rec	Limit	Batch
ORP	mV	228	226.	99.1	95.6-104.	WG651792
Chromium, Hexavalent	mg/kg	218	196.	89.9	80-120	WG651732
pH	su	5.7	5.74	101.	98.25-101.75	WG651973

Analyte	Units	Laboratory Control Result	Sample Ref	Duplicate %Rec	Limit	RPD	Limit	Batch
ORP	mV	226.	226.	99.0	95.6-104.	0	20	WG651792
Chromium, Hexavalent	mg/kg	213.	196.	98.0	80-120	8.31	20	WG651732
pH	su	5.74	5.74	101.	98.25-101.75	0	20	WG651973

Analyte	Units	MS Res	Matrix Spike Ref Res	TV	% Rec	Limit	Ref Samp	Batch
Chromium, Hexavalent	mg/kg	159.	0	20.	79.5	75-125	L625393-34	WG651732

Analyte	Units	MSD	Matrix Spike Ref	Duplicate %Rec	Limit	RPD	Limit	Ref Samp	Batch
Chromium, Hexavalent	mg/kg	154.	159.	77.0	75-125	3.19	20	L625393-34	WG651732

Batch number /Run number / Sample number cross reference

WG651792: R2590557: L625417-01 02 03 04 05 06 07 08 09 10 11 12 13 14
WG651732: R2591477: L625417-01 02 03 04 05 06 07 08 09 10 11 12 13 14
WG651973: R2593518: L625417-01 02 03 04 05 06 07 08 09 10 11 12 13 14

* * Calculations are performed prior to rounding of reported values.

* Performance of this Analyte is outside of established criteria.

For additional information, please see Attachment A 'List of Analytes with QC Qualifiers.'

QC SUMMARY REPORT

Hall Environmental Analysis Laboratory, Inc.

WO#: 1303601

25-Mar-13

Client: Animas Environmental Services

Project: K.M. DC-11

Sample ID: MB-6506	SampType: MBLK	TestCode: EPA Method 8015B: Diesel Range Organics								
Client ID: PBS	Batch ID: 6506	RunNo: 9198								
Prep Date: 3/15/2013	Analysis Date: 3/16/2013	SeqNo: 262996	Units: mg/Kg							
Analyte	Result	PQL	SPK value	SPK Ref Val	%REC	LowLimit	HighLimit	%RPD	RPDLimit	Qual
Diesel Range Organics (DRO)	ND	10								
Motor Oil Range Organics (MRO)	ND	50								
Surr: DNOP	11		10.00		114	72.4	120			

Sample ID: LCS-6506	SampType: LCS	TestCode: EPA Method 8015B: Diesel Range Organics								
Client ID: LCSS	Batch ID: 6506	RunNo: 9198								
Prep Date: 3/15/2013	Analysis Date: 3/16/2013	SeqNo: 262997	Units: mg/Kg							
Analyte	Result	PQL	SPK value	SPK Ref Val	%REC	LowLimit	HighLimit	%RPD	RPDLimit	Qual
Diesel Range Organics (DRO)	49	10	50.00	0	98.4	47.4	122			
Surr: DNOP	5.5		5.000		109	72.4	120			

Sample ID: MB-6507	SampType: MBLK	TestCode: EPA Method 8015B: Diesel Range Organics								
Client ID: PBS	Batch ID: 6507	RunNo: 9236								
Prep Date: 3/15/2013	Analysis Date: 3/18/2013	SeqNo: 263399	Units: %REC							
Analyte	Result	PQL	SPK value	SPK Ref Val	%REC	LowLimit	HighLimit	%RPD	RPDLimit	Qual
Surr: DNOP	11		10.00		110	72.4	120			

Sample ID: LCS-6507	SampType: LCS	TestCode: EPA Method 8015B: Diesel Range Organics								
Client ID: LCSS	Batch ID: 6507	RunNo: 9236								
Prep Date: 3/15/2013	Analysis Date: 3/18/2013	SeqNo: 263753	Units: %REC							
Analyte	Result	PQL	SPK value	SPK Ref Val	%REC	LowLimit	HighLimit	%RPD	RPDLimit	Qual
Surr: DNOP	5.6		5.000		112	72.4	120			

Qualifiers:

* Value exceeds Maximum Contaminant Level.
E Value above quantitation range
J Analyte detected below quantitation limits
P Sample pH greater than 2
RL Reporting Detection Limit

B Analyte detected in the associated Method Blank
H Holding times for preparation or analysis exceeded
ND Not Detected at the Reporting Limit
R RPD outside accepted recovery limits
S Spike Recovery outside accepted recovery limits

QC SUMMARY REPORT

Hall Environmental Analysis Laboratory, Inc.

WO#: 1303601

25-Mar-13

Client: Animas Environmental Services

Project: K.M. DC-11

Sample ID: MB-6505	SampType: MBLK	TestCode: EPA Method 8015B: Gasoline Range								
Client ID: PBS	Batch ID: 6505	RunNo: 9259								
Prep Date: 3/15/2013	Analysis Date: 3/18/2013	SeqNo: 263856	Units: mg/Kg							
Analyte	Result	PQL	SPK value	SPK Ref Val	%REC	LowLimit	HighLimit	%RPD	RPDLimit	Qual
Gasoline Range Organics (GRO)	ND	5.0								
Surr: BFB	910		1000		91.2	84	116			

Sample ID: LCS-6505	SampType: LCS	TestCode: EPA Method 8015B: Gasoline Range								
Client ID: LCSS	Batch ID: 6505	RunNo: 9259								
Prep Date: 3/15/2013	Analysis Date: 3/18/2013	SeqNo: 263857	Units: mg/Kg							
Analyte	Result	PQL	SPK value	SPK Ref Val	%REC	LowLimit	HighLimit	%RPD	RPDLimit	Qual
Gasoline Range Organics (GRO)	28	5.0	25.00	0	113	62.6	136			
Surr: BFB	930		1000		93.0	84	116			

Qualifiers:

* Value exceeds Maximum Contaminant Level.
E Value above quantitation range
J Analyte detected below quantitation limits
P Sample pH greater than 2
RL Reporting Detection Limit

B Analyte detected in the associated Method Blank
H Holding times for preparation or analysis exceeded
ND Not Detected at the Reporting Limit
R RPD outside accepted recovery limits
S Spike Recovery outside accepted recovery limits

QC SUMMARY REPORT

Hall Environmental Analysis Laboratory, Inc.

WO#: 1303601

25-Mar-13

Client: Animas Environmental Services

Project: K.M. DC-11

Sample ID: MB-6505	SampType: MBLK	TestCode: EPA Method 8021B: Volatiles								
Client ID: PBS	Batch ID: 6505	RunNo: 9259								
Prep Date: 3/15/2013	Analysis Date: 3/18/2013	SeqNo: 263900	Units: mg/Kg							
Analyte	Result	PQL	SPK value	SPK Ref Val	%REC	LowLimit	HighLimit	%RPD	RPDLimit	Qual
Benzene	ND	0.050								
Toluene	0.0045	0.050								J
Ethylbenzene	0.0053	0.050								J
Xylenes, Total	ND	0.10								
Surr: 4-Bromofluorobenzene	0.98		1.000		98.5	80	120			

Sample ID: LCS-6505	SampType: LCS	TestCode: EPA Method 8021B: Volatiles								
Client ID: LCSS	Batch ID: 6505	RunNo: 9259								
Prep Date: 3/15/2013	Analysis Date: 3/18/2013	SeqNo: 263901	Units: mg/Kg							
Analyte	Result	PQL	SPK value	SPK Ref Val	%REC	LowLimit	HighLimit	%RPD	RPDLimit	Qual
Benzene	0.88	0.050	1.000	0	87.9	80	120			
Toluene	0.91	0.050	1.000	0	91.0	80	120			
Ethylbenzene	0.92	0.050	1.000	0	91.8	80	120			
Xylenes, Total	2.8	0.10	3.000	0	95.0	80	120			
Surr: 4-Bromofluorobenzene	1.0		1.000		101	80	120			

Qualifiers:

* Value exceeds Maximum Contaminant Level.
E Value above quantitation range
J Analyte detected below quantitation limits
P Sample pH greater than 2
RL Reporting Detection Limit

B Analyte detected in the associated Method Blank
H Holding times for preparation or analysis exceeded
ND Not Detected at the Reporting Limit
R RPD outside accepted recovery limits
S Spike Recovery outside accepted recovery limits

QC SUMMARY REPORT

Hall Environmental Analysis Laboratory, Inc.

WO#: 1303601

25-Mar-13

Client: Animas Environmental Services

Project: K.M. DC-11

Sample ID: mb-6503	SampType: MBLK		TestCode: EPA Method 8270C: PAHs							
Client ID: PBS	Batch ID: 6503		RunNo: 9226							
Prep Date: 3/15/2013	Analysis Date: 3/16/2013		SeqNo: 262419		Units: mg/Kg					
Analyte	Result	PQL	SPK value	SPK Ref Val	%REC	LowLimit	HighLimit	%RPD	RPDLimit	Qual
Naphthalene	ND	0.020								
Acenaphthene	ND	0.020								
Fluorene	ND	0.020								
Anthracene	ND	0.020								
Fluoranthene	ND	0.020								
Pyrene	ND	0.020								
Benz(a)anthracene	ND	0.020								
Chrysene	ND	0.020								
Benzo(b)fluoranthene	ND	0.020								
Benzo(k)fluoranthene	ND	0.020								
Benzo(a)pyrene	ND	0.020								
Dibenz(a,h)anthracene	ND	0.020								
Indeno(1,2,3-cd)pyrene	ND	0.020								
Surr: Benzo(e)pyrene	0.31		0.3300		93.3	44.9	129			
Surr: N-hexadecane	1.4		1.460		97.5	45.4	126			

Sample ID: lcs-6503	SampType: LCS		TestCode: EPA Method 8270C: PAHs							
Client ID: LCSS	Batch ID: 6503		RunNo: 9226							
Prep Date: 3/15/2013	Analysis Date: 3/16/2013		SeqNo: 262420		Units: mg/Kg					
Analyte	Result	PQL	SPK value	SPK Ref Val	%REC	LowLimit	HighLimit	%RPD	RPDLimit	Qual
Naphthalene	0.28	0.020	0.3300	0	83.7	52	107			
Acenaphthene	0.30	0.020	0.3300	0	90.2	50	120			
Fluorene	0.29	0.020	0.3300	0	88.5	50.8	115			
Anthracene	0.29	0.020	0.3300	0	87.3	53.9	117			
Fluoranthene	0.27	0.020	0.3300	0	82.8	54.5	112			
Pyrene	0.29	0.020	0.3300	0	89.2	51.2	113			
Benz(a)anthracene	0.31	0.020	0.3300	0	94.0	54.9	109			
Chrysene	0.28	0.020	0.3300	0	85.3	49	112			
Benzo(b)fluoranthene	0.33	0.020	0.3300	0	99.2	58.2	118			
Benzo(k)fluoranthene	0.27	0.020	0.3300	0	81.8	53.5	118			
Benzo(a)pyrene	0.27	0.020	0.3300	0	83.0	50.1	118			
Dibenz(a,h)anthracene	0.32	0.020	0.3300	0	98.4	59.5	113			
Indeno(1,2,3-cd)pyrene	0.31	0.020	0.3300	0	93.2	58.5	114			
Surr: Benzo(e)pyrene	0.36		0.3300		109	44.9	129			
Surr: N-hexadecane	1.5		1.460		105	45.4	126			

Qualifiers:

* Value exceeds Maximum Contaminant Level.
E Value above quantitation range
J Analyte detected below quantitation limits
P Sample pH greater than 2
RL Reporting Detection Limit

B Analyte detected in the associated Method Blank
H Holding times for preparation or analysis exceeded
ND Not Detected at the Reporting Limit
R RPD outside accepted recovery limits
S Spike Recovery outside accepted recovery limits

QC SUMMARY REPORT

Hall Environmental Analysis Laboratory, Inc.

WO#: 1303601

25-Mar-13

Client: Animas Environmental Services

Project: K.M. DC-11

Sample ID: mb-6518	SampType: MBLK		TestCode: EPA Method 8270C: PAHs							
Client ID: PBS	Batch ID: 6518		RunNo: 9249							
Prep Date: 3/16/2013	Analysis Date: 3/18/2013		SeqNo: 263368		Units: mg/Kg					
Analyte	Result	PQL	SPK value	SPK Ref Val	%REC	LowLimit	HighLimit	%RPD	RPDLimit	Qual
Naphthalene	ND	0.020								
Acenaphthene	ND	0.020								
Fluorene	ND	0.020								
Anthracene	ND	0.020								
Fluoranthene	ND	0.020								
Pyrene	ND	0.020								
Benz(a)anthracene	ND	0.020								
Chrysene	ND	0.020								
Benzo(b)fluoranthene	ND	0.020								
Benzo(k)fluoranthene	ND	0.020								
Benzo(a)pyrene	ND	0.020								
Dibenz(a,h)anthracene	ND	0.020								
Indeno(1,2,3-cd)pyrene	ND	0.020								
Surr: Benzo(e)pyrene	0.33		0.3300		99.1	44.9	129			
Surr: N-hexadecane	1.3		1.460		91.7	45.4	126			

Sample ID: lcs-6518	SampType: LCS		TestCode: EPA Method 8270C: PAHs							
Client ID: LCSS	Batch ID: 6518		RunNo: 9249							
Prep Date: 3/16/2013	Analysis Date: 3/18/2013		SeqNo: 263369		Units: mg/Kg					
Analyte	Result	PQL	SPK value	SPK Ref Val	%REC	LowLimit	HighLimit	%RPD	RPDLimit	Qual
Naphthalene	0.26	0.020	0.3300	0	77.6	52	107			
Acenaphthene	0.28	0.020	0.3300	0	84.3	50	120			
Fluorene	0.30	0.020	0.3300	0	91.8	50.8	115			
Anthracene	0.29	0.020	0.3300	0	86.4	53.9	117			
Fluoranthene	0.27	0.020	0.3300	0	81.6	54.5	112			
Pyrene	0.29	0.020	0.3300	0	88.7	51.2	113			
Benz(a)anthracene	0.29	0.020	0.3300	0	88.1	54.9	109			
Chrysene	0.26	0.020	0.3300	0	79.9	49	112			
Benzo(b)fluoranthene	0.30	0.020	0.3300	0	91.4	58.2	118			
Benzo(k)fluoranthene	0.26	0.020	0.3300	0	77.4	53.5	118			
Benzo(a)pyrene	0.26	0.020	0.3300	0	80.3	50.1	118			
Dibenz(a,h)anthracene	0.30	0.020	0.3300	0	90.9	59.5	113			
Indeno(1,2,3-cd)pyrene	0.28	0.020	0.3300	0	85.3	58.5	114			
Surr: Benzo(e)pyrene	0.31		0.3300		94.5	44.9	129			
Surr: N-hexadecane	1.4		1.460		92.9	45.4	126			

Qualifiers:

* Value exceeds Maximum Contaminant Level.
E Value above quantitation range
J Analyte detected below quantitation limits
P Sample pH greater than 2
RL Reporting Detection Limit

B Analyte detected in the associated Method Blank
H Holding times for preparation or analysis exceeded
ND Not Detected at the Reporting Limit
R RPD outside accepted recovery limits
S Spike Recovery outside accepted recovery limits

QC SUMMARY REPORT

Hall Environmental Analysis Laboratory, Inc.

WO#: 1303601

25-Mar-13

Client: Animas Environmental Services

Project: K.M. DC-11

Sample ID: mb-6527	SampType: MBLK				TestCode: EPA Method 8270C: PAHs					
Client ID: PBS	Batch ID: 6527				RunNo: 9249					
Prep Date: 3/17/2013	Analysis Date: 3/18/2013				SeqNo: 263508	Units: %REC				
Analyte	Result	PQL	SPK value	SPK Ref Val	%REC	LowLimit	HighLimit	%RPD	RPDLimit	Qual
Surr: Benzo(e)pyrene	0.48		0.4950		97.4	44.9	129			
Surr: N-hexadecane	2.1		2.190		95.3	45.4	126			

Sample ID: lcs-6527	SampType: LCS				TestCode: EPA Method 8270C: PAHs					
Client ID: LCSS	Batch ID: 6527				RunNo: 9249					
Prep Date: 3/17/2013	Analysis Date: 3/18/2013				SeqNo: 263509	Units: %REC				
Analyte	Result	PQL	SPK value	SPK Ref Val	%REC	LowLimit	HighLimit	%RPD	RPDLimit	Qual
Surr: Benzo(e)pyrene	0.41		0.3300		124	44.9	129			
Surr: N-hexadecane	1.7		1.460		117	45.4	126			

Qualifiers:

* Value exceeds Maximum Contaminant Level.
E Value above quantitation range
J Analyte detected below quantitation limits
P Sample pH greater than 2
RL Reporting Detection Limit

B Analyte detected in the associated Method Blank
H Holding times for preparation or analysis exceeded
ND Not Detected at the Reporting Limit
R RPD outside accepted recovery limits
S Spike Recovery outside accepted recovery limits

QC SUMMARY REPORT

Hall Environmental Analysis Laboratory, Inc.

WO#: 1303601

25-Mar-13

Client: Animas Environmental Services

Project: K.M. DC-11

Sample ID: MB-6561	SampType: MBLK	TestCode: EPA Method 7471: Mercury
Client ID: PBS	Batch ID: 6561	RunNo: 9320
Prep Date: 3/19/2013	Analysis Date: 3/20/2013	SeqNo: 265844 Units: mg/kg
Analyte	Result	PQL SPK value SPK Ref Val %REC LowLimit HighLimit %RPD RPDLimit Qual
Mercury	ND	0.033

Sample ID: LCS-6561	SampType: LCS	TestCode: EPA Method 7471: Mercury
Client ID: LCSS	Batch ID: 6561	RunNo: 9320
Prep Date: 3/19/2013	Analysis Date: 3/20/2013	SeqNo: 265845 Units: mg/kg
Analyte	Result	PQL SPK value SPK Ref Val %REC LowLimit HighLimit %RPD RPDLimit Qual
Mercury	0.14	0.033 0.1667 0 84.6 80 120

Qualifiers:

* Value exceeds Maximum Contaminant Level.
E Value above quantitation range
J Analyte detected below quantitation limits
P Sample pH greater than 2
RL Reporting Detection Limit

B Analyte detected in the associated Method Blank
H Holding times for preparation or analysis exceeded
ND Not Detected at the Reporting Limit
R RPD outside accepted recovery limits
S Spike Recovery outside accepted recovery limits

QC SUMMARY REPORT

Hall Environmental Analysis Laboratory, Inc.

WO#: 1303601

25-Mar-13

Client: Animas Environmental Services

Project: K.M. DC-11

Sample ID: MB-6592	SampType: MBLK	TestCode: EPA Method 6010B: Soil Metals								
Client ID: PBS	Batch ID: 6592	RunNo: 9328								
Prep Date: 3/21/2013	Analysis Date: 3/21/2013	SeqNo: 265952	Units: mg/Kg							
Analyte	Result	PQL	SPK value	SPK Ref Val	%REC	LowLimit	HighLimit	%RPD	RPDLimit	Qual
Arsenic	ND	2.5								
Cadmium	ND	0.10								
Chromium	ND	0.30								
Copper	0.25	0.30								J
Lead	ND	0.25								
Nickel	0.18	0.50								J
Selenium	ND	2.5								
Silver	ND	0.25								
Zinc	ND	2.5								

Sample ID: LCS-6592	SampType: LCS	TestCode: EPA Method 6010B: Soil Metals								
Client ID: LCSS	Batch ID: 6592	RunNo: 9328								
Prep Date: 3/21/2013	Analysis Date: 3/21/2013	SeqNo: 265953	Units: mg/Kg							
Analyte	Result	PQL	SPK value	SPK Ref Val	%REC	LowLimit	HighLimit	%RPD	RPDLimit	Qual
Arsenic	23	2.5	25.00	0	92.8	80	120			
Cadmium	24	0.10	25.00	0	97.7	80	120			
Chromium	25	0.30	25.00	0	99.0	80	120			
Copper	27	0.30	25.00	0.2455	108	80	120			
Lead	23	0.25	25.00	0	90.2	80	120			
Nickel	22	0.50	25.00	0.1820	88.1	80	120			
Selenium	23	2.5	25.00	0	90.3	80	120			
Silver	4.9	0.25	5.000	0	98.3	80	120			
Zinc	23	2.5	25.00	0	90.7	80	120			

Sample ID: MB-6592	SampType: MBLK	TestCode: EPA Method 6010B: Soil Metals								
Client ID: PBS	Batch ID: 6592	RunNo: 9370								
Prep Date: 3/21/2013	Analysis Date: 3/22/2013	SeqNo: 267258	Units: mg/Kg							
Analyte	Result	PQL	SPK value	SPK Ref Val	%REC	LowLimit	HighLimit	%RPD	RPDLimit	Qual
Barium	0.12	0.10								

Sample ID: LCS-6592	SampType: LCS	TestCode: EPA Method 6010B: Soil Metals								
Client ID: LCSS	Batch ID: 6592	RunNo: 9370								
Prep Date: 3/21/2013	Analysis Date: 3/22/2013	SeqNo: 267259	Units: mg/Kg							
Analyte	Result	PQL	SPK value	SPK Ref Val	%REC	LowLimit	HighLimit	%RPD	RPDLimit	Qual
Barium	24	0.10	25.00	0.1160	95.9	80	120			B

Qualifiers:

* Value exceeds Maximum Contaminant Level.
E Value above quantitation range
J Analyte detected below quantitation limits
P Sample pH greater than 2
RL Reporting Detection Limit

B Analyte detected in the associated Method Blank
H Holding times for preparation or analysis exceeded
ND Not Detected at the Reporting Limit
R RPD outside accepted recovery limits
S Spike Recovery outside accepted recovery limits

Sample Log-In Check List

Client Name:	Animas Environmental		Work Order Number:	1303601
Received by/date:	<i>[Signature]</i> 03/15/13			
Logged By:	Lindsay Mangin	3/15/2013 10:00:00 AM	<i>[Signature]</i>	
Completed By:	Lindsay Mangin	3/15/2013 11:01:39 AM	<i>[Signature]</i>	
Reviewed By:	<i>[Signature]</i> 03/15/13			

Chain of Custody

- Were seals intact? Yes ☒ No ☐ Not Present ☐
- Is Chain of Custody complete? Yes ☒ No ☐ Not Present ☐
- How was the sample delivered? Courier

Log In

- Coolers are present? (see 19. for cooler specific information) Yes ☒ No ☐ NA ☐
- Was an attempt made to cool the samples? Yes ☒ No ☐ NA ☐
- Were all samples received at a temperature of $>0^{\circ}\text{C}$ to 6.0°C ? Yes ☒ No ☐ NA ☐
- Sample(s) in proper container(s)? Yes ☒ No ☐
- Sufficient sample volume for indicated test(s)? Yes ☒ No ☐
- Are samples (except VOA and ONG) properly preserved? Yes ☒ No ☐
- Was preservative added to bottles? Yes ☐ No ☒ NA ☐
- VOA vials have zero headspace? Yes ☐ No ☐ No VOA Vials ☒
- Were any sample containers received broken? Yes ☐ No ☒
- Does paperwork match bottle labels?
(Note discrepancies on chain of custody) Yes ☒ No ☐
- Are matrices correctly identified on Chain of Custody? Yes ☒ No ☐
- Is it clear what analyses were requested? Yes ☒ No ☐
- Were all holding times able to be met?
(If no, notify customer for authorization.) Yes ☒ No ☐

of preserved
bottles checked
for pH:

(<2 or >12 unless noted)

Adjusted? _____

Checked by: _____

Special Handling (if applicable)

- Was client notified of all discrepancies with this order? Yes ☐ No ☐ NA ☒

Person Notified:	_____	Date:	_____
By Whom:	_____	Via:	<input type="checkbox"/> eMail <input type="checkbox"/> Phone <input type="checkbox"/> Fax <input type="checkbox"/> In Person
Regarding:	_____		
Client Instructions:	_____		

- Additional remarks:

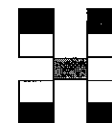
19. Cooler Information

Cooler No	Temp °C	Condition	Seal Intact	Seal No	Seal Date	Signed By
1	3.4	Good	Yes			

Chain-of-Custody Record

Client: Animas Environmental Services LLC
 Mailing Address: 624 E Comanche Farmington NM 87401
 Phone #: 505 564 2281
 email or Fax#:
 QA/QC Package:
☒ Standard ☐ Level 4 (Full Validation)
 Accreditation
☐ NELAP ☐ Other _____
☐ EDD (Type) _____

Turn-Around Time:
☐ Standard ☒ Rush 5 day TAT
 Project Name: K.M. DC-11
 Project #:
 Project Manager: D Watson
 Sampler: H Woods / D Watson
 On Ice: ☒ Yes ☐ No
 Sample Temperature: 3.1



HALL ENVIRONMENTAL ANALYSIS LABORATORY

www.hallenvironmental.com

4901 Hawkins NE - Albuquerque, NM 87109

Tel. 505-345-3975 Fax 505-345-4107

Analysis Request

Date	Time	Matrix	Sample Request ID	Container Type and #	Preservative Type	HEAL No.	BTEX + MTBE + TMB's (8021)	BTEX + MTBE + TPH (Gas only)	TPH 8015B (GRO / DRO / MRO)	TPH (Method 418.1)	EDB (Method 504.1)	PAH's (8310 or 8270 SIMS)	RCRA 8 Metals	Anions (F, Cl, NO ₃ , NO ₂ , PO ₄ , SO ₄)	8081 Pesticides / 8082 PCB's	8260B (VOA)	8270 (Semi-VOA)	Table 910-1 COGCC Soils	Air Bubbles (Y or N)
3-14-13	2012	Soil	DC-11 C-1	6-40Z	Cold	-001												X	
	2007		DC-11 C-2	3-80Z		-002												X	
	2016		DC-11 C-3	3-80Z		-003												X	
	2025		DC-11 C-4	1-80Z 3-40Z		-004												X	
	2037		DC-11 C-5	6-40Z		-005												X	
	2047		DC-11 C-6	1-80Z 4-40Z		-006												X	
	2047		DC-11 C-7	6-40Z		-007												X	
	2036		DC-11 C-8	1-80Z 4-40Z		-008												X	
	2058		DC-11 C-9	6-40Z		-009												X	
	2056		DC-11 C-10	6-40Z		-010												X	
	2111		DC-11 C-11	1-80Z 4-40Z		-011												X	
	2120		DC-11 C-12	1-80Z 4-40Z		-012												X	

Date: 3/15/13	Time: 541	Relinquished by: <u>Debrah Watson</u>	Received by: <u>Christine Wheeler</u>	Date: 3/15/13	Time: 541
Date: 3/15/13	Time: 600	Relinquished by: <u>Christine Wheeler</u>	Received by: <u>[Signature]</u>	Date: 3/15/13	Time: 1000

Remarks: Please call w/ questions.

102

Client: Animas Environmental
Services LLC

Mailing Address: 624 E Comanche
Parminster, NM 87401

Phone #: 505 564 2281

email or Fax#:

QA/QC Package:

☒ Standard ☐ Level 4 (Full Validation)

Accreditation

☐ NELAP ☐ Other _____

☐ EDD (Type) _____

☐ Standard ☒ Rush 5 day TAT

K.M. DC-11


Project #:

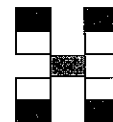
Project Manager:

D Watson
Sampler: H Woods / D Watson

On Ice: ☒ Yes ☐ No

Sample Temperature: 34

Date:	Time:	Relinquished by:	Received by:	Date	Time	Remarks:
1/15/13	541	Debrah Wate	Christine Waeten	3/15/13	541	
Date:	Time:	Relinquished by:	Received by:	Date	Time	
3/15/13	1008	Christine Waeten		3/15/13	1008	2 of 2



www.hallenvironmental.com

4901 Hawkins NE - Albuquerque, NM 87109

Tel. 505-345-3975 Fax 505-345-4107

Analysis Request

[illegible]

If necessary, samples submitted to Hall Environmental may be subcontracted to other accredited laboratories. This serves as notice of this possibility. Any sub-contracted data will be clearly notated on the analytical report.