

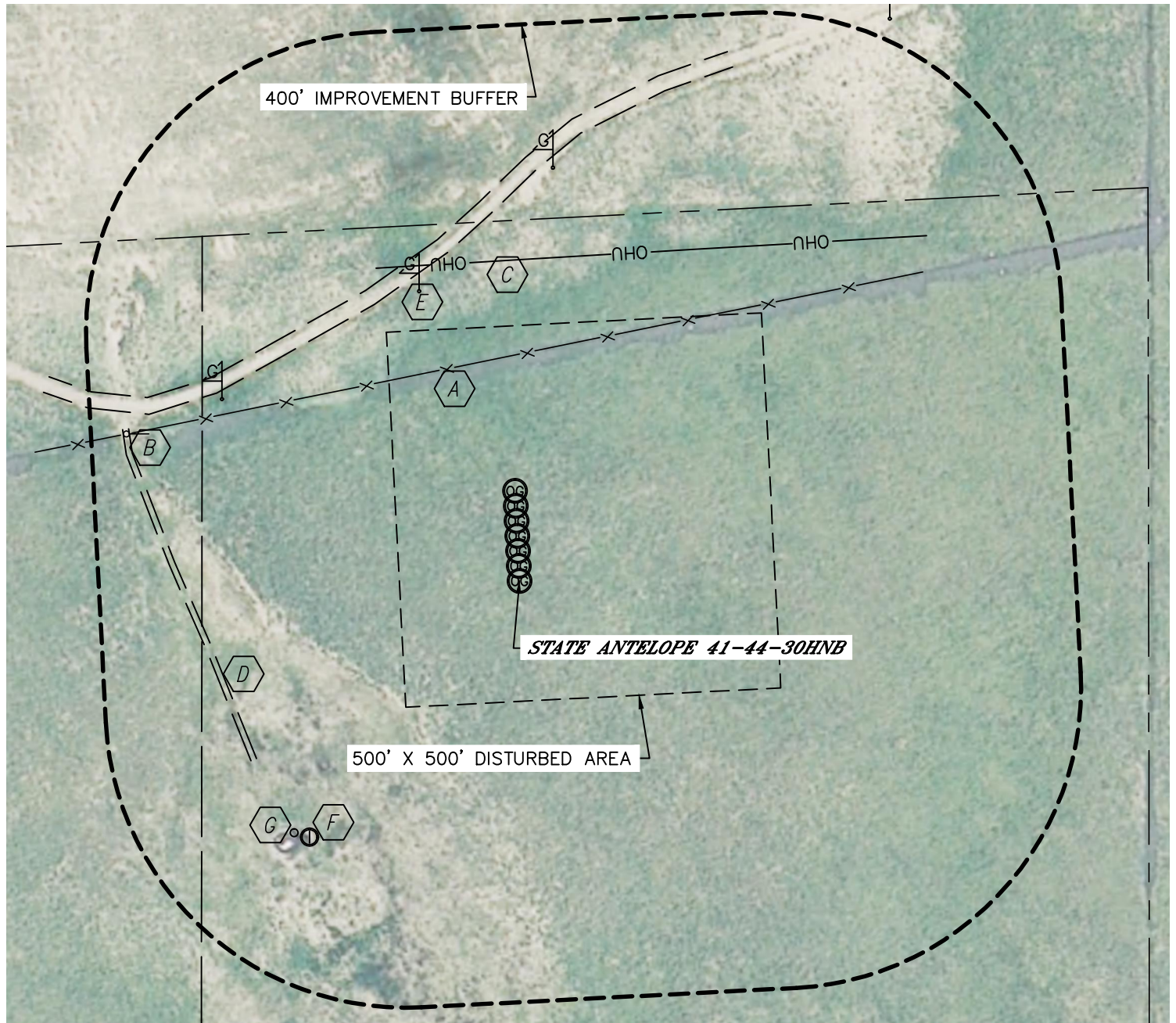


Lat40°, Inc. 1635 Foxtrail Drive, Suite 325 Loveland, CO 970-776-3321

LOCATION DRAWING

STATE ANTELOPE P-30 PAD

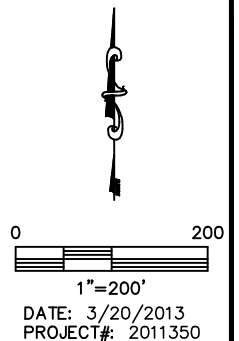
SECTION: 30
TOWNSHIP: 5N
RANGE: 62W



IMPROVEMENTS:
(MEASURED FROM PROPOSED STATE ANTELOPE 41-44-30HNB WELL LOCATION)

- | | | | |
|---|-----------------------------|---|------------------------------------|
| A | FENCE 296' NW | E | GAS MARKER 408' & 465' NW, 552' NE |
| B | GATE 559' NW | F | IRRIGATION WELL 441' SW |
| C | OVERHEAD UTILITY 427' N | G | WATER TANK 450' SW |
| D | FIELD ROAD 417' SW, 427' NW | | |

NEAREST: BUILDING 2136' NW (OUTBUILDING), PUBLIC ROAD 5280'+,
ABOVE GROUND UTILITY 427' N, RAILROAD 5280'+, PROPERTY LINE 480' N



DATE: 3/20/2013
PROJECT#: 2011350