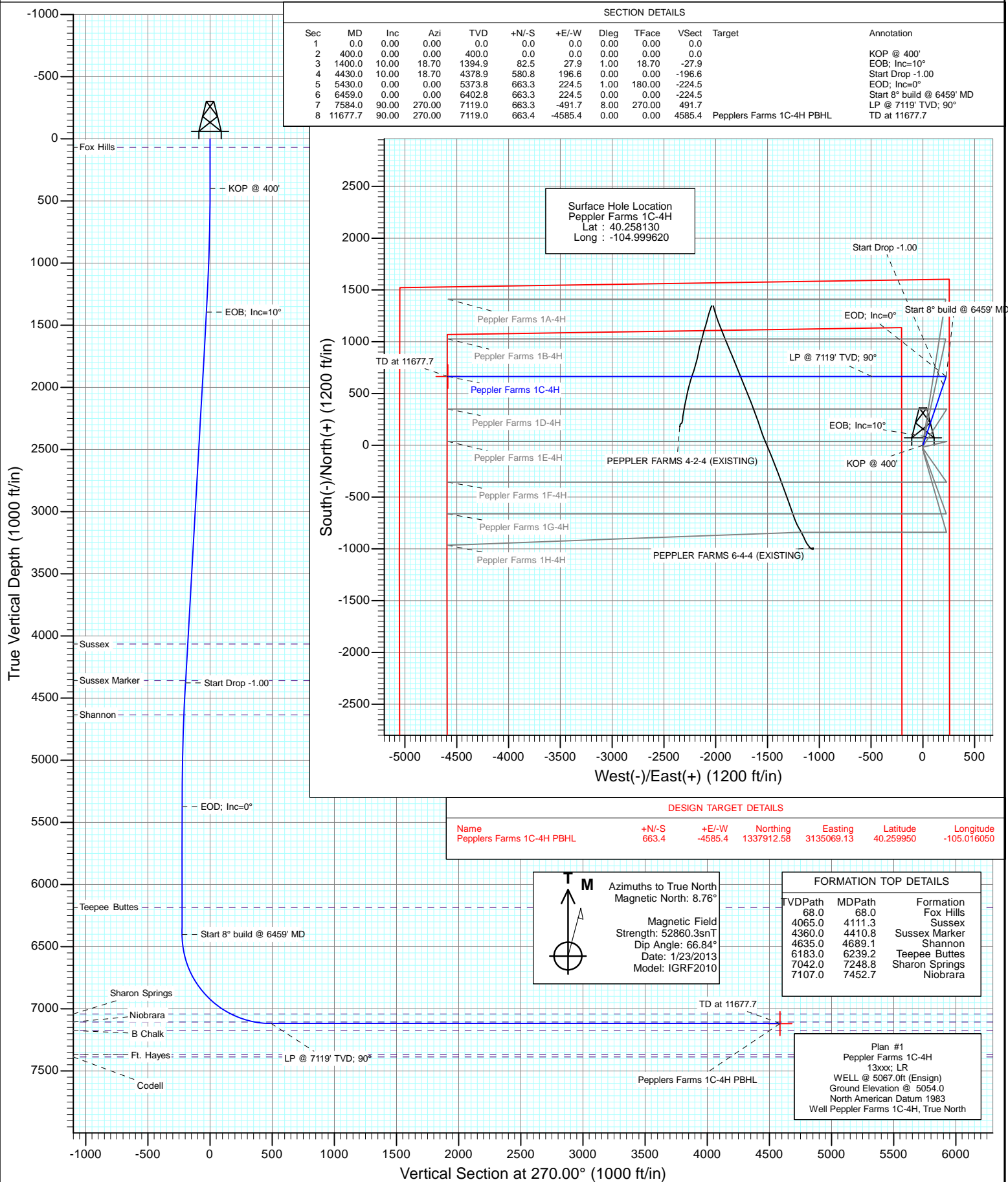




Project: DJ Wattenberg  
Site: S4-T3N-R68W (Peppler Farms)  
Well: Peppler Farms 1C-4H  
Wellbore: Hz  
Design: Plan #1



## Planning Report

<b>Database:</b>	USA EDM 5000 Multi Users DB	<b>Local Co-ordinate Reference:</b>	Well Peppler Farms 1C-4H
<b>Company:</b>	EnCana Oil & Gas (USA) Inc	<b>TVD Reference:</b>	WELL @ 5067.0ft (Ensign)
<b>Project:</b>	DJ Wattenberg	<b>MD Reference:</b>	WELL @ 5067.0ft (Ensign)
<b>Site:</b>	S4-T3N-R68W (Peppler Farms)	<b>North Reference:</b>	True
<b>Well:</b>	Peppler Farms 1C-4H	<b>Survey Calculation Method:</b>	Minimum Curvature
<b>Wellbore:</b>	Hz		
<b>Design:</b>	Plan #1		

<b>Project</b>	DJ Wattenberg		
<b>Map System:</b>	US State Plane 1983	<b>System Datum:</b>	Mean Sea Level
<b>Geo Datum:</b>	North American Datum 1983		
<b>Map Zone:</b>	Colorado Northern Zone		

Site		S4-T3N-R68W (Peppler Farms)			
Site Position:		Northing:	1,337,296.89 ft	Latitude:	40.258190
From:	Lat/Long	Easting:	3,139,658.06 ft	Longitude:	-104.999620
Position Uncertainty:	0.0 ft	Slot Radius:	13.200 in	Grid Convergence:	0.32 °

Well	Peppler Farms 1C-4H					
Well Position	+N/-S	0.0 ft	Northing:	1,337,275.03 ft	Latitude:	40.258130
	+E/-W	0.0 ft	Easting:	3,139,658.19 ft	Longitude:	-104.999620
Position Uncertainty		0.0 ft	Wellhead Elevation:	ft	Ground Level:	5,054.0 ft

<b>Wellbore</b>	Hz				
<b>Magnetics</b>	<b>Model Name</b>	<b>Sample Date</b>	<b>Declination (°)</b>	<b>Dip Angle (°)</b>	<b>Field Strength (nT)</b>
	IGRF2010	1/23/2013	8.76	66.84	52,860

<b>Design</b>	Plan #1				
<b>Audit Notes:</b>					
<b>Version:</b>	<b>Phase:</b>	PLAN		<b>Tie On Depth:</b>	0.0
<b>Vertical Section:</b>	<b>Depth From (TVD) (ft)</b>	<b>+N/-S (ft)</b>	<b>+E/-W (ft)</b>	<b>Direction (°)</b>	
	0.0	0.0	0.0	270.00	

<b>Plan Sections</b>										
Measured Depth (ft)	Inclination (°)	Azimuth (°)	Vertical Depth (ft)	+N/-S (ft)	+E/-W (ft)	Dogleg Rate (°/100ft)	Build Rate (°/100ft)	Turn Rate (°/100ft)	TFO (°)	Target
0.0	0.00	0.00	0.0	0.0	0.0	0.00	0.00	0.00	0.00	
400.0	0.00	0.00	400.0	0.0	0.0	0.00	0.00	0.00	0.00	
1,400.0	10.00	18.70	1,394.9	82.5	27.9	1.00	1.00	0.00	18.70	
4,430.0	10.00	18.70	4,378.9	580.8	196.6	0.00	0.00	0.00	0.00	
5,430.0	0.00	0.00	5,373.8	663.3	224.5	1.00	-1.00	0.00	180.00	
6,459.0	0.00	0.00	6,402.8	663.3	224.5	0.00	0.00	0.00	0.00	
7,584.0	90.00	270.00	7,119.0	663.3	-491.7	8.00	8.00	0.00	270.00	
11,677.7	90.00	270.00	7,119.0	663.4	-4,585.4	0.00	0.00	0.00	0.00	Pepplers Farms 1C-4H

# Planning Report

<b>Database:</b>	USA EDM 5000 Multi Users DB	<b>Local Co-ordinate Reference:</b>	Well Peppler Farms 1C-4H
<b>Company:</b>	EnCana Oil & Gas (USA) Inc	<b>TVD Reference:</b>	WELL @ 5067.0ft (Ensign)
<b>Project:</b>	DJ Wattenberg	<b>MD Reference:</b>	WELL @ 5067.0ft (Ensign)
<b>Site:</b>	S4-T3N-R68W (Peppler Farms)	<b>North Reference:</b>	True
<b>Well:</b>	Peppler Farms 1C-4H	<b>Survey Calculation Method:</b>	Minimum Curvature
<b>Wellbore:</b>	Hz		
<b>Design:</b>	Plan #1		

## Planned Survey

Measured Depth (ft)	Inclination (°)	Azimuth (°)	Vertical Depth (ft)	+N/-S (ft)	+E/-W (ft)	Vertical Section (ft)	Dogleg Rate (°/100ft)	Build Rate (°/100ft)	Comments / Formations
0.0	0.00	0.00	0.0	0.0	0.0	0.0	0.00	0.00	
68.0	0.00	0.00	68.0	0.0	0.0	0.0	0.00	0.00	Fox Hills
100.0	0.00	0.00	100.0	0.0	0.0	0.0	0.00	0.00	
200.0	0.00	0.00	200.0	0.0	0.0	0.0	0.00	0.00	
300.0	0.00	0.00	300.0	0.0	0.0	0.0	0.00	0.00	
400.0	0.00	0.00	400.0	0.0	0.0	0.0	0.00	0.00	KOP @ 400'
500.0	1.00	18.70	500.0	0.8	0.3	-0.3	1.00	1.00	
600.0	2.00	18.70	600.0	3.3	1.1	-1.1	1.00	1.00	
700.0	3.00	18.70	699.9	7.4	2.5	-2.5	1.00	1.00	
800.0	4.00	18.70	799.7	13.2	4.5	-4.5	1.00	1.00	
900.0	5.00	18.70	899.4	20.7	7.0	-7.0	1.00	1.00	
1,000.0	6.00	18.70	998.9	29.7	10.1	-10.1	1.00	1.00	
1,100.0	7.00	18.70	1,098.3	40.5	13.7	-13.7	1.00	1.00	
1,200.0	8.00	18.70	1,197.4	52.8	17.9	-17.9	1.00	1.00	
1,300.0	9.00	18.70	1,296.3	66.8	22.6	-22.6	1.00	1.00	
1,400.0	10.00	18.70	1,394.9	82.5	27.9	-27.9	1.00	1.00	EOB; Inc=10°
1,500.0	10.00	18.70	1,493.4	98.9	33.5	-33.5	0.00	0.00	
1,600.0	10.00	18.70	1,591.9	115.3	39.0	-39.0	0.00	0.00	
1,700.0	10.00	18.70	1,690.4	131.8	44.6	-44.6	0.00	0.00	
1,800.0	10.00	18.70	1,788.9	148.2	50.2	-50.2	0.00	0.00	
1,900.0	10.00	18.70	1,887.3	164.7	55.7	-55.7	0.00	0.00	
2,000.0	10.00	18.70	1,985.8	181.1	61.3	-61.3	0.00	0.00	
2,100.0	10.00	18.70	2,084.3	197.6	66.9	-66.9	0.00	0.00	
2,200.0	10.00	18.70	2,182.8	214.0	72.4	-72.4	0.00	0.00	
2,300.0	10.00	18.70	2,281.3	230.5	78.0	-78.0	0.00	0.00	
2,400.0	10.00	18.70	2,379.7	246.9	83.6	-83.6	0.00	0.00	
2,500.0	10.00	18.70	2,478.2	263.4	89.1	-89.1	0.00	0.00	
2,600.0	10.00	18.70	2,576.7	279.8	94.7	-94.7	0.00	0.00	
2,700.0	10.00	18.70	2,675.2	296.3	100.3	-100.3	0.00	0.00	
2,800.0	10.00	18.70	2,773.7	312.7	105.9	-105.9	0.00	0.00	
2,900.0	10.00	18.70	2,872.1	329.2	111.4	-111.4	0.00	0.00	
3,000.0	10.00	18.70	2,970.6	345.6	117.0	-117.0	0.00	0.00	
3,100.0	10.00	18.70	3,069.1	362.1	122.6	-122.6	0.00	0.00	
3,200.0	10.00	18.70	3,167.6	378.5	128.1	-128.1	0.00	0.00	
3,300.0	10.00	18.70	3,266.1	395.0	133.7	-133.7	0.00	0.00	
3,400.0	10.00	18.70	3,364.5	411.4	139.3	-139.3	0.00	0.00	
3,500.0	10.00	18.70	3,463.0	427.9	144.8	-144.8	0.00	0.00	
3,600.0	10.00	18.70	3,561.5	444.3	150.4	-150.4	0.00	0.00	
3,700.0	10.00	18.70	3,660.0	460.8	156.0	-156.0	0.00	0.00	
3,800.0	10.00	18.70	3,758.5	477.2	161.5	-161.5	0.00	0.00	
3,900.0	10.00	18.70	3,857.0	493.7	167.1	-167.1	0.00	0.00	
4,000.0	10.00	18.70	3,955.4	510.1	172.7	-172.7	0.00	0.00	
4,100.0	10.00	18.70	4,053.9	526.5	178.2	-178.2	0.00	0.00	
4,111.3	10.00	18.70	4,065.0	528.4	178.9	-178.9	0.00	0.00	Sussex
4,200.0	10.00	18.70	4,152.4	543.0	183.8	-183.8	0.00	0.00	
4,300.0	10.00	18.70	4,250.9	559.4	189.4	-189.4	0.00	0.00	
4,400.0	10.00	18.70	4,349.4	575.9	194.9	-194.9	0.00	0.00	
4,410.8	10.00	18.70	4,360.0	577.7	195.5	-195.5	0.00	0.00	Sussex Marker
4,430.0	10.00	18.70	4,378.9	580.8	196.6	-196.6	0.00	0.00	Start Drop -1.00
4,500.0	9.30	18.70	4,447.9	591.9	200.4	-200.4	1.00	-1.00	
4,600.0	8.30	18.70	4,546.7	606.4	205.3	-205.3	1.00	-1.00	
4,689.1	7.41	18.70	4,635.0	618.0	209.2	-209.2	1.00	-1.00	Shannon

# Planning Report

<b>Database:</b>	USA EDM 5000 Multi Users DB	<b>Local Co-ordinate Reference:</b>	Well Peppler Farms 1C-4H
<b>Company:</b>	EnCana Oil & Gas (USA) Inc	<b>TVD Reference:</b>	WELL @ 5067.0ft (Ensign)
<b>Project:</b>	DJ Wattenberg	<b>MD Reference:</b>	WELL @ 5067.0ft (Ensign)
<b>Site:</b>	S4-T3N-R68W (Peppler Farms)	<b>North Reference:</b>	True
<b>Well:</b>	Peppler Farms 1C-4H	<b>Survey Calculation Method:</b>	Minimum Curvature
<b>Wellbore:</b>	Hz		
<b>Design:</b>	Plan #1		

Planned Survey									
Measured Depth (ft)	Inclination (°)	Azimuth (°)	Vertical Depth (ft)	+N/-S (ft)	+E/-W (ft)	Vertical Section (ft)	Dogleg Rate (°/100ft)	Build Rate (°/100ft)	Comments / Formations
4,700.0	7.30	18.70	4,645.8	619.3	209.6	-209.6	1.00	-1.00	
4,800.0	6.30	18.70	4,745.1	630.5	213.4	-213.4	1.00	-1.00	
4,900.0	5.30	18.70	4,844.6	640.1	216.7	-216.7	1.00	-1.00	
5,000.0	4.30	18.70	4,944.2	648.0	219.3	-219.3	1.00	-1.00	
5,100.0	3.30	18.70	5,044.0	654.3	221.5	-221.5	1.00	-1.00	
5,200.0	2.30	18.70	5,143.9	658.9	223.0	-223.0	1.00	-1.00	
5,300.0	1.30	18.70	5,243.8	661.9	224.0	-224.0	1.00	-1.00	
5,400.0	0.30	18.70	5,343.8	663.2	224.5	-224.5	1.00	-1.00	
5,430.0	0.00	0.00	5,373.8	663.3	224.5	-224.5	1.00	-1.00	EOD; Inc=0°
5,500.0	0.00	0.00	5,443.8	663.3	224.5	-224.5	0.00	0.00	
5,600.0	0.00	0.00	5,543.8	663.3	224.5	-224.5	0.00	0.00	
5,700.0	0.00	0.00	5,643.8	663.3	224.5	-224.5	0.00	0.00	
5,800.0	0.00	0.00	5,743.8	663.3	224.5	-224.5	0.00	0.00	
5,900.0	0.00	0.00	5,843.8	663.3	224.5	-224.5	0.00	0.00	
6,000.0	0.00	0.00	5,943.8	663.3	224.5	-224.5	0.00	0.00	
6,100.0	0.00	0.00	6,043.8	663.3	224.5	-224.5	0.00	0.00	
6,200.0	0.00	0.00	6,143.8	663.3	224.5	-224.5	0.00	0.00	
6,239.2	0.00	0.00	6,183.0	663.3	224.5	-224.5	0.00	0.00	Teepee Buttes
6,300.0	0.00	0.00	6,243.8	663.3	224.5	-224.5	0.00	0.00	
6,400.0	0.00	0.00	6,343.8	663.3	224.5	-224.5	0.00	0.00	
6,459.0	0.00	0.00	6,402.8	663.3	224.5	-224.5	0.00	0.00	Start 8° build @ 6459' MD
6,500.0	3.28	270.00	6,443.8	663.3	223.3	-223.3	8.00	8.00	
6,600.0	11.28	270.00	6,542.9	663.3	210.7	-210.7	8.00	8.00	
6,700.0	19.28	270.00	6,639.3	663.3	184.3	-184.3	8.00	8.00	
6,800.0	27.28	270.00	6,731.1	663.3	144.8	-144.8	8.00	8.00	
6,900.0	35.28	270.00	6,816.5	663.3	93.0	-93.0	8.00	8.00	
7,000.0	43.28	270.00	6,893.8	663.3	29.7	-29.7	8.00	8.00	
7,100.0	51.28	270.00	6,961.6	663.3	-43.7	43.7	8.00	8.00	
7,200.0	59.28	270.00	7,018.5	663.3	-125.8	125.8	8.00	8.00	
7,248.8	63.19	270.00	7,042.0	663.3	-168.6	168.6	8.00	8.00	Sharon Springs
7,300.0	67.28	270.00	7,063.4	663.3	-215.1	215.1	8.00	8.00	
7,400.0	75.28	270.00	7,095.5	663.3	-309.7	309.7	8.00	8.00	
7,452.7	79.50	270.00	7,107.0	663.3	-361.1	361.1	8.00	8.00	Niobrara
7,500.0	83.28	270.00	7,114.1	663.3	-407.9	407.9	8.00	8.00	
7,584.0	90.00	270.00	7,119.0	663.3	-491.7	491.7	8.00	8.00	LP @ 7119' TVD; 90°
7,600.0	90.00	270.00	7,119.0	663.3	-507.7	507.7	0.00	0.00	
7,700.0	90.00	270.00	7,119.0	663.3	-607.7	607.7	0.00	0.00	
7,800.0	90.00	270.00	7,119.0	663.3	-707.7	707.7	0.00	0.00	
7,900.0	90.00	270.00	7,119.0	663.3	-807.7	807.7	0.00	0.00	
8,000.0	90.00	270.00	7,119.0	663.3	-907.7	907.7	0.00	0.00	
8,100.0	90.00	270.00	7,119.0	663.3	-1,007.7	1,007.7	0.00	0.00	
8,200.0	90.00	270.00	7,119.0	663.3	-1,107.7	1,107.7	0.00	0.00	
8,300.0	90.00	270.00	7,119.0	663.3	-1,207.7	1,207.7	0.00	0.00	
8,400.0	90.00	270.00	7,119.0	663.3	-1,307.7	1,307.7	0.00	0.00	
8,500.0	90.00	270.00	7,119.0	663.3	-1,407.7	1,407.7	0.00	0.00	
8,600.0	90.00	270.00	7,119.0	663.3	-1,507.7	1,507.7	0.00	0.00	
8,700.0	90.00	270.00	7,119.0	663.3	-1,607.7	1,607.7	0.00	0.00	
8,800.0	90.00	270.00	7,119.0	663.3	-1,707.7	1,707.7	0.00	0.00	
8,900.0	90.00	270.00	7,119.0	663.3	-1,807.7	1,807.7	0.00	0.00	
9,000.0	90.00	270.00	7,119.0	663.3	-1,907.7	1,907.7	0.00	0.00	
9,100.0	90.00	270.00	7,119.0	663.4	-2,007.7	2,007.7	0.00	0.00	
9,200.0	90.00	270.00	7,119.0	663.4	-2,107.7	2,107.7	0.00	0.00	

## Planning Report

<b>Database:</b>	USA EDM 5000 Multi Users DB	<b>Local Co-ordinate Reference:</b>	Well Peppler Farms 1C-4H
<b>Company:</b>	EnCana Oil & Gas (USA) Inc	<b>TVD Reference:</b>	WELL @ 5067.0ft (Ensign)
<b>Project:</b>	DJ Wattenberg	<b>MD Reference:</b>	WELL @ 5067.0ft (Ensign)
<b>Site:</b>	S4-T3N-R68W (Peppler Farms)	<b>North Reference:</b>	True
<b>Well:</b>	Peppler Farms 1C-4H	<b>Survey Calculation Method:</b>	Minimum Curvature
<b>Wellbore:</b>	Hz		
<b>Design:</b>	Plan #1		

Planned Survey									
Measured Depth (ft)	Inclination (°)	Azimuth (°)	Vertical Depth (ft)	+N/-S (ft)	+E/-W (ft)	Vertical Section (ft)	Dogleg Rate (°/100ft)	Build Rate (°/100ft)	Comments / Formations
9,300.0	90.00	270.00	7,119.0	663.4	-2,207.7	2,207.7	0.00	0.00	
9,400.0	90.00	270.00	7,119.0	663.4	-2,307.7	2,307.7	0.00	0.00	
9,500.0	90.00	270.00	7,119.0	663.4	-2,407.7	2,407.7	0.00	0.00	
9,600.0	90.00	270.00	7,119.0	663.4	-2,507.7	2,507.7	0.00	0.00	
9,700.0	90.00	270.00	7,119.0	663.4	-2,607.7	2,607.7	0.00	0.00	
9,800.0	90.00	270.00	7,119.0	663.4	-2,707.7	2,707.7	0.00	0.00	
9,900.0	90.00	270.00	7,119.0	663.4	-2,807.7	2,807.7	0.00	0.00	
10,000.0	90.00	270.00	7,119.0	663.4	-2,907.7	2,907.7	0.00	0.00	
10,100.0	90.00	270.00	7,119.0	663.4	-3,007.7	3,007.7	0.00	0.00	
10,200.0	90.00	270.00	7,119.0	663.4	-3,107.7	3,107.7	0.00	0.00	
10,300.0	90.00	270.00	7,119.0	663.4	-3,207.7	3,207.7	0.00	0.00	
10,400.0	90.00	270.00	7,119.0	663.4	-3,307.7	3,307.7	0.00	0.00	
10,500.0	90.00	270.00	7,119.0	663.4	-3,407.7	3,407.7	0.00	0.00	
10,600.0	90.00	270.00	7,119.0	663.4	-3,507.7	3,507.7	0.00	0.00	
10,700.0	90.00	270.00	7,119.0	663.4	-3,607.7	3,607.7	0.00	0.00	
10,800.0	90.00	270.00	7,119.0	663.4	-3,707.7	3,707.7	0.00	0.00	
10,900.0	90.00	270.00	7,119.0	663.4	-3,807.7	3,807.7	0.00	0.00	
11,000.0	90.00	270.00	7,119.0	663.4	-3,907.7	3,907.7	0.00	0.00	
11,100.0	90.00	270.00	7,119.0	663.4	-4,007.7	4,007.7	0.00	0.00	
11,200.0	90.00	270.00	7,119.0	663.4	-4,107.7	4,107.7	0.00	0.00	
11,300.0	90.00	270.00	7,119.0	663.4	-4,207.7	4,207.7	0.00	0.00	
11,400.0	90.00	270.00	7,119.0	663.4	-4,307.7	4,307.7	0.00	0.00	
11,500.0	90.00	270.00	7,119.0	663.4	-4,407.7	4,407.7	0.00	0.00	
11,600.0	90.00	270.00	7,119.0	663.4	-4,507.7	4,507.7	0.00	0.00	
11,677.7	90.00	270.00	7,119.0	663.4	-4,585.4	4,585.4	0.00	0.00	TD at 11677.7 - Pepplers Farms 1C-4H PBHL

Targets									
Target Name									
- hit/miss target	Dip Angle (°)	Dip Dir. (°)	TVD (ft)	+N/-S (ft)	+E/-W (ft)	Northing (ft)	Easting (ft)	Latitude	Longitude
- Shape									
Pepplers Farms 1C-4H f - plan hits target center - Point	0.00	0.00	7,119.0	663.4	-4,585.4	1,337,912.58	3,135,069.13	40.259950	-105.016050

Formations						
Measured Depth (ft)	Vertical Depth (ft)	Name	Lithology	Dip (°)	Dip Direction (°)	
68.0	68.0	Fox Hills				
4,111.3	4,065.0	Sussex				
4,410.8	4,360.0	Sussex Marker				
4,689.1	4,635.0	Shannon				
6,239.2	6,183.0	Teepee Buttes				
7,248.8	7,042.0	Sharon Springs				
7,452.7	7,107.0	Niobrara				

## Planning Report

<b>Database:</b>	USA EDM 5000 Multi Users DB	<b>Local Co-ordinate Reference:</b>	Well Peppler Farms 1C-4H
<b>Company:</b>	EnCana Oil & Gas (USA) Inc	<b>TVD Reference:</b>	WELL @ 5067.0ft (Ensign)
<b>Project:</b>	DJ Wattenberg	<b>MD Reference:</b>	WELL @ 5067.0ft (Ensign)
<b>Site:</b>	S4-T3N-R68W (Peppler Farms)	<b>North Reference:</b>	True
<b>Well:</b>	Peppler Farms 1C-4H	<b>Survey Calculation Method:</b>	Minimum Curvature
<b>Wellbore:</b>	Hz		
<b>Design:</b>	Plan #1		

### Plan Annotations

Measured Depth (ft)	Vertical Depth (ft)	Local Coordinates		Comment
		+N/-S (ft)	+E/-W (ft)	
400.0	400.0	0.0	0.0	KOP @ 400'
1,400.0	1,394.9	82.5	27.9	EOB; Inc=10°
4,430.0	4,378.9	580.8	196.6	Start Drop -1.00
5,430.0	5,373.8	663.3	224.5	EOD; Inc=0°
6,459.0	6,402.8	663.3	224.5	Start 8° build @ 6459' MD
7,584.0	7,119.0	663.3	-491.7	LP @ 7119' TVD; 90°
11,677.7	7,119.0	663.4	-4,585.4	TD at 11677.7

# **EnCana Oil & Gas (USA) Inc**

**DJ Wattenberg**

**S4-T3N-R68W (Peppler Farms)**

**Peppler Farms 1C-4H**

**Hz**

**Plan #1**

## **Anticollision Report**

**24 January, 2013**

## Anticollision Report

<b>Company:</b>	EnCana Oil & Gas (USA) Inc	<b>Local Co-ordinate Reference:</b>	Well Peppler Farms 1C-4H
<b>Project:</b>	DJ Wattenberg	<b>TVD Reference:</b>	WELL @ 5067.0ft (Ensign)
<b>Reference Site:</b>	S4-T3N-R68W (Peppler Farms)	<b>MD Reference:</b>	WELL @ 5067.0ft (Ensign)
<b>Site Error:</b>	0.0ft	<b>North Reference:</b>	True
<b>Reference Well:</b>	Peppler Farms 1C-4H	<b>Survey Calculation Method:</b>	Minimum Curvature
<b>Well Error:</b>	0.0ft	<b>Output errors are at</b>	2.00 sigma
<b>Reference Wellbore</b>	Hz	<b>Database:</b>	USA EDM 5000 Multi Users DB
<b>Reference Design:</b>	Plan #1	<b>Offset TVD Reference:</b>	Offset Datum

<b>Reference</b>	Plan #1		
<b>Filter type:</b>	NO GLOBAL FILTER: Using user defined selection & filtering criteria		
<b>Interpolation Method:</b>	MD Interval 100.0ft	<b>Error Model:</b>	Systematic Ellipse
<b>Depth Range:</b>	Unlimited	<b>Scan Method:</b>	Closest Approach 3D
<b>Results Limited by:</b>	Maximum center-center distance of 500.0ft	<b>Error Surface:</b>	Elliptical Conic
<b>Warning Levels Evaluated at:</b>	2.00 Sigma		

<b>Survey Tool Program</b>	<b>Date</b>	1/24/2013		
<b>From (ft)</b>	<b>To (ft)</b>	<b>Survey (Wellbore)</b>	<b>Tool Name</b>	<b>Description</b>
0.0	11,677.7	Plan #1 (Hz)	MWD	Geolink MWD

Summary						
Site Name	Reference Measured Depth (ft)	Offset Measured Depth (ft)	Distance Between Centres (ft)	Distance Between Ellipses (ft)	Separation Factor	Warning
S4-T3N-R68W (Peppler Farms)						
Peppler Farms 1A-4H - Hz - Plan #1	166.3	167.3	21.9	21.3	40.713	CC
Peppler Farms 1A-4H - Hz - Plan #1	200.0	201.0	21.9	21.2	33.402	ES
Peppler Farms 1A-4H - Hz - Plan #1	400.0	399.2	28.8	27.4	21.260	SF
Peppler Farms 1B-4H - Hz - Plan #1	300.0	300.0	10.9	9.9	10.909	CC, ES
Peppler Farms 1B-4H - Hz - Plan #1	11,678.4	11,996.4	458.9	272.9	2.468	SF
Peppler Farms 1D-4H - Hz - Plan #1	400.0	400.0	10.9	9.6	8.090	CC, ES
Peppler Farms 1D-4H - Hz - Plan #1	11,678.4	11,939.3	419.5	243.9	2.389	SF
Peppler Farms 1E-4H - Hz - Plan #1	400.0	399.0	18.2	16.9	13.501	CC, ES
Peppler Farms 1E-4H - Hz - Plan #1	600.0	599.0	21.5	19.5	10.528	SF
Peppler Farms 1F-4H - Hz - Plan #1	400.0	399.0	29.1	27.8	21.601	CC, ES
Peppler Farms 1F-4H - Hz - Plan #1	700.0	698.4	37.3	34.9	15.589	SF
Peppler Farms 1G-4H - Hz - Plan #1	400.0	399.0	40.1	38.7	29.702	CC, ES
Peppler Farms 1G-4H - Hz - Plan #1	600.0	597.5	46.6	44.6	22.790	SF
Peppler Farms 1H-4H - Hz - Plan #1	200.0	199.0	51.0	50.3	78.340	CC, ES
Peppler Farms 1H-4H - Hz - Plan #1	600.0	594.8	67.6	65.5	33.094	SF
PEPPLER FARMS 4-2-4 (EXISTING) - Existing - Existing	9,438.2	7,275.3	481.3	406.1	6.400	CC, ES
PEPPLER FARMS 4-2-4 (EXISTING) - Existing - Existing	9,500.0	7,275.9	485.3	408.5	6.326	SF
PEPPLER FARMS 6-4-4 (EXISTING) - Existing - Existing						Out of range



# Anticollision Report

<b>Company:</b>	EnCana Oil & Gas (USA) Inc	<b>Local Co-ordinate Reference:</b>	Well Peppler Farms 1C-4H
<b>Project:</b>	DJ Wattenberg	<b>TVD Reference:</b>	WELL @ 5067.0ft (Ensign)
<b>Reference Site:</b>	S4-T3N-R68W (Peppler Farms)	<b>MD Reference:</b>	WELL @ 5067.0ft (Ensign)
<b>Site Error:</b>	0.0ft	<b>North Reference:</b>	True
<b>Reference Well:</b>	Peppler Farms 1C-4H	<b>Survey Calculation Method:</b>	Minimum Curvature
<b>Well Error:</b>	0.0ft	<b>Output errors are at</b>	2.00 sigma
<b>Reference Wellbore</b>	Hz	<b>Database:</b>	USA EDM 5000 Multi Users DB
<b>Reference Design:</b>	Plan #1	<b>Offset TVD Reference:</b>	Offset Datum

Offset Design S4-T3N-R68W (Peppler Farms) - Peppler Farms 1A-4H - Hz - Plan #1													Offset Site Error:	0.0 ft
Survey Program: 0-MWD													Offset Well Error:	0.0 ft
Reference		Offset		Semi Major Axis			Distance				Total		Warning	
Measured Depth (ft)	Vertical Depth (ft)	Measured Depth (ft)	Vertical Depth (ft)	Reference (ft)	Offset (ft)	Highside Toolface (°)	Offset Wellbore Centre +N/-S (ft)	+E/-W (ft)	Between Centres (ft)	Between Ellipses (ft)	Uncertainty Axis	Separation Factor		
0.0	0.0	1.0	1.0	0.0	0.0	0.00	21.9	0.0	21.9					
100.0	100.0	101.0	101.0	0.2	0.2	0.00	21.9	0.0	21.9	21.6	0.31	71.575		
166.3	166.3	167.3	167.3	0.3	0.3	0.00	21.9	0.0	21.9	21.3	0.54	40.713 CC		
200.0	200.0	201.0	201.0	0.3	0.3	0.00	21.9	0.0	21.9	21.2	0.65	33.402 ES		
300.0	300.0	300.0	300.0	0.5	0.5	0.66	23.6	0.3	23.6	22.6	1.00	23.548		
400.0	400.0	399.2	399.0	0.7	0.7	2.16	28.7	1.1	28.8	27.4	1.35	21.260 SF		
500.0	500.0	497.8	497.2	0.9	0.9	-15.30	37.1	2.4	36.6	34.9	1.70	21.546		
600.0	600.0	595.9	594.6	1.0	1.2	-14.68	48.8	4.3	46.1	44.0	2.04	22.546		
700.0	699.9	693.5	691.1	1.2	1.5	-14.41	63.7	6.6	57.3	54.9	2.39	23.973		
800.0	799.7	790.5	786.4	1.4	1.8	-14.34	81.8	9.5	70.2	67.5	2.74	25.652		
900.0	899.4	886.9	880.3	1.6	2.2	-14.39	102.8	12.8	84.8	81.7	3.08	27.487		
1,000.0	998.9	982.5	972.8	1.8	2.7	-14.50	126.7	16.6	101.0	97.5	3.43	29.417		
1,100.0	1,098.3	1,078.4	1,064.7	2.1	3.2	-14.64	153.7	20.9	118.6	114.8	3.78	31.354		
1,200.0	1,197.4	1,177.0	1,159.0	2.3	3.7	-14.89	182.2	25.4	135.4	131.3	4.14	32.691		
1,300.0	1,296.3	1,275.8	1,253.5	2.6	4.2	-15.26	210.7	29.9	150.6	146.1	4.51	33.404		
1,400.0	1,394.9	1,374.9	1,348.3	2.9	4.7	-15.72	239.3	34.4	164.1	159.2	4.88	33.621		
1,500.0	1,493.4	1,474.0	1,443.1	3.3	5.3	-16.23	268.0	39.0	176.8	171.5	5.26	33.594		
1,600.0	1,591.9	1,573.2	1,537.9	3.6	5.8	-16.66	296.6	43.5	189.4	183.8	5.65	33.551		
1,700.0	1,690.4	1,672.4	1,632.8	3.9	6.3	-17.04	325.2	48.0	202.1	196.1	6.03	33.498		
1,800.0	1,788.9	1,771.6	1,727.6	4.2	6.8	-17.38	353.9	52.6	214.8	208.4	6.43	33.437		
1,900.0	1,887.3	1,870.8	1,822.5	4.6	7.4	-17.68	382.5	57.1	227.6	220.7	6.82	33.371		
2,000.0	1,985.8	1,970.0	1,917.3	4.9	7.9	-17.94	411.2	61.7	240.3	233.1	7.21	33.303		
2,100.0	2,084.3	2,069.1	2,012.2	5.3	8.4	-18.18	439.8	66.2	253.0	245.4	7.61	33.235		
2,200.0	2,182.8	2,168.3	2,107.0	5.6	9.0	-18.40	468.4	70.7	265.7	257.7	8.01	33.166		
2,300.0	2,281.3	2,267.5	2,201.9	5.9	9.5	-18.60	497.1	75.3	278.5	270.0	8.41	33.099		
2,400.0	2,379.7	2,366.7	2,296.7	6.3	10.0	-18.78	525.7	79.8	291.2	282.4	8.82	33.032		
2,500.0	2,478.2	2,465.9	2,391.6	6.6	10.6	-18.94	554.4	84.3	303.9	294.7	9.22	32.967		
2,600.0	2,576.7	2,565.0	2,486.4	7.0	11.1	-19.09	583.0	88.9	316.7	307.0	9.62	32.904		
2,700.0	2,675.2	2,664.2	2,581.3	7.3	11.6	-19.23	611.6	93.4	329.4	319.4	10.03	32.844		
2,800.0	2,773.7	2,763.4	2,676.1	7.7	12.2	-19.36	640.3	97.9	342.2	331.7	10.44	32.785		
2,900.0	2,872.1	2,862.6	2,771.0	8.0	12.7	-19.48	668.9	102.5	354.9	344.1	10.84	32.728		
3,000.0	2,970.6	2,961.8	2,865.8	8.4	13.2	-19.59	697.6	107.0	367.6	356.4	11.25	32.673		
3,100.0	3,069.1	3,061.0	2,960.7	8.7	13.8	-19.70	726.2	111.6	380.4	368.7	11.66	32.621		
3,200.0	3,167.6	3,160.1	3,055.5	9.0	14.3	-19.79	754.8	116.1	393.1	381.1	12.07	32.570		
3,300.0	3,266.1	3,259.3	3,150.4	9.4	14.8	-19.89	783.5	120.6	405.9	393.4	12.48	32.522		
3,400.0	3,364.5	3,358.5	3,245.2	9.7	15.4	-19.97	812.1	125.2	418.6	405.7	12.89	32.475		
3,500.0	3,463.0	3,457.7	3,340.1	10.1	15.9	-20.05	840.8	129.7	431.4	418.1	13.30	32.430		
3,600.0	3,561.5	3,556.9	3,434.9	10.4	16.4	-20.13	869.4	134.2	444.1	430.4	13.71	32.386		
3,700.0	3,660.0	3,656.1	3,529.8	10.8	17.0	-20.20	898.1	138.8	456.9	442.8	14.13	32.345		
3,800.0	3,758.5	3,755.2	3,624.6	11.1	17.5	-20.27	926.7	143.3	469.6	455.1	14.54	32.305		
3,900.0	3,857.0	3,854.4	3,719.5	11.5	18.1	-20.33	955.3	147.8	482.4	467.4	14.95	32.266		
4,000.0	3,955.4	3,953.6	3,814.3	11.8	18.6	-20.39	984.0	152.4	495.1	479.8	15.36	32.229		

# Anticollision Report

<b>Company:</b>	EnCana Oil & Gas (USA) Inc	<b>Local Co-ordinate Reference:</b>	Well Peppler Farms 1C-4H
<b>Project:</b>	DJ Wattenberg	<b>TVD Reference:</b>	WELL @ 5067.0ft (Ensign)
<b>Reference Site:</b>	S4-T3N-R68W (Peppler Farms)	<b>MD Reference:</b>	WELL @ 5067.0ft (Ensign)
<b>Site Error:</b>	0.0ft	<b>North Reference:</b>	True
<b>Reference Well:</b>	Peppler Farms 1C-4H	<b>Survey Calculation Method:</b>	Minimum Curvature
<b>Well Error:</b>	0.0ft	<b>Output errors are at</b>	2.00 sigma
<b>Reference Wellbore</b>	Hz	<b>Database:</b>	USA EDM 5000 Multi Users DB
<b>Reference Design:</b>	Plan #1	<b>Offset TVD Reference:</b>	Offset Datum

Offset Design S4-T3N-R68W (Peppler Farms) - Peppler Farms 1B-4H - Hz - Plan #1													Offset Site Error:	0.0 ft
Survey Program:		0-MWD											Offset Well Error:	0.0 ft
Reference		Offset		Semi Major Axis			Distance							Warning
Measured Depth (ft)	Vertical Depth (ft)	Measured Depth (ft)	Vertical Depth (ft)	Reference (ft)	Offset (ft)	Highside Toolface (°)	Offset Wellbore Centre +N/-S (ft)	+E/-W (ft)	Between Centres (ft)	Between Ellipses (ft)	Total Uncertainty Axis	Separation Factor		
0.0	0.0	0.0	0.0	0.0	0.0	0.00	10.9	0.0	10.9					
100.0	100.0	100.0	100.0	0.2	0.2	0.00	10.9	0.0	10.9	10.6	0.30	35.986		
200.0	200.0	200.0	200.0	0.3	0.3	0.00	10.9	0.0	10.9	10.3	0.65	16.742		
300.0	300.0	300.0	300.0	0.5	0.5	0.00	10.9	0.0	10.9	9.9	1.00	10.909 CC, ES		
400.0	400.0	399.8	399.8	0.7	0.7	0.89	11.8	0.2	11.8	10.4	1.35	8.722		
500.0	500.0	499.6	499.5	0.9	0.9	-16.76	14.3	0.7	13.5	11.8	1.70	7.953		
600.0	600.0	599.3	599.2	1.0	1.0	-16.68	18.6	1.7	15.3	13.2	2.05	7.466		
700.0	699.9	699.0	698.7	1.2	1.2	-17.26	24.5	2.9	17.1	14.7	2.40	7.136		
800.0	799.7	798.7	798.1	1.4	1.4	-18.31	32.1	4.6	19.0	16.2	2.75	6.902		
900.0	899.4	898.3	897.2	1.6	1.7	-19.68	41.4	6.6	20.9	17.8	3.10	6.730		
1,000.0	998.9	997.9	996.2	1.8	1.9	-21.30	52.4	9.0	22.9	19.4	3.47	6.600		
1,100.0	1,098.3	1,097.5	1,094.9	2.1	2.2	-23.09	65.1	11.7	24.9	21.1	3.84	6.496		
1,200.0	1,197.4	1,197.1	1,193.4	2.3	2.5	-24.98	79.4	14.8	27.1	22.9	4.23	6.408		
1,300.0	1,296.3	1,296.6	1,291.6	2.6	2.8	-26.96	95.4	18.3	29.3	24.7	4.64	6.325		
1,400.0	1,394.9	1,396.0	1,389.4	2.9	3.1	-28.97	113.1	22.1	31.7	26.6	5.07	6.242		
1,500.0	1,493.4	1,495.5	1,486.8	3.3	3.5	-30.27	132.4	26.3	34.9	29.4	5.53	6.311		
1,600.0	1,591.9	1,595.3	1,584.5	3.6	3.9	-30.77	152.7	30.6	39.0	33.0	5.98	6.518		
1,700.0	1,690.4	1,695.3	1,682.2	3.9	4.3	-31.17	173.0	35.0	43.1	36.6	6.44	6.691		
1,800.0	1,788.9	1,795.2	1,780.0	4.2	4.6	-31.51	193.3	39.4	47.2	40.3	6.90	6.837		
1,900.0	1,887.3	1,895.1	1,877.7	4.6	5.0	-31.79	213.6	43.8	51.3	43.9	7.36	6.960		
2,000.0	1,985.8	1,995.0	1,975.4	4.9	5.4	-32.03	233.9	48.2	55.3	47.5	7.83	7.066		
2,100.0	2,084.3	2,094.9	2,073.2	5.3	5.8	-32.24	254.2	52.6	59.4	51.1	8.30	7.158		
2,200.0	2,182.8	2,194.8	2,170.9	5.6	6.2	-32.42	274.5	57.0	63.5	54.8	8.78	7.238		
2,300.0	2,281.3	2,294.8	2,268.6	5.9	6.6	-32.57	294.8	61.4	67.6	58.4	9.25	7.308		
2,400.0	2,379.7	2,394.7	2,366.4	6.3	7.0	-32.71	315.1	65.8	71.7	62.0	9.73	7.370		
2,500.0	2,478.2	2,494.6	2,464.1	6.6	7.4	-32.84	335.4	70.2	75.8	65.6	10.21	7.426		
2,600.0	2,576.7	2,594.5	2,561.8	7.0	7.8	-32.95	355.7	74.5	79.9	69.2	10.69	7.475		
2,700.0	2,675.2	2,694.4	2,659.6	7.3	8.2	-33.05	376.0	78.9	84.0	72.9	11.17	7.520		
2,800.0	2,773.7	2,794.3	2,757.3	7.7	8.6	-33.14	396.3	83.3	88.1	76.5	11.66	7.560		
2,900.0	2,872.1	2,894.3	2,855.0	8.0	9.0	-33.23	416.6	87.7	92.2	80.1	12.14	7.597		
3,000.0	2,970.6	2,994.2	2,952.8	8.4	9.4	-33.30	436.9	92.1	96.3	83.7	12.62	7.630		
3,100.0	3,069.1	3,094.1	3,050.5	8.7	9.8	-33.37	457.3	96.5	100.4	87.3	13.11	7.660		
3,200.0	3,167.6	3,194.0	3,148.2	9.0	10.2	-33.44	477.6	100.9	104.5	90.9	13.60	7.688		
3,300.0	3,266.1	3,293.9	3,246.0	9.4	10.6	-33.50	497.9	105.3	108.6	94.5	14.08	7.714		
3,400.0	3,364.5	3,393.8	3,343.7	9.7	11.0	-33.55	518.2	109.7	112.7	98.2	14.57	7.738		
3,500.0	3,463.0	3,493.8	3,441.4	10.1	11.4	-33.61	538.5	114.1	116.8	101.8	15.05	7.760		
3,600.0	3,561.5	3,593.7	3,539.2	10.4	11.8	-33.65	558.8	118.4	120.9	105.4	15.54	7.780		
3,700.0	3,660.0	3,693.6	3,636.9	10.8	12.2	-33.70	579.1	122.8	125.0	109.0	16.03	7.799		
3,800.0	3,758.5	3,793.5	3,734.6	11.1	12.6	-33.74	599.4	127.2	129.1	112.6	16.52	7.817		
3,900.0	3,857.0	3,893.4	3,832.4	11.5	13.0	-33.78	619.7	131.6	133.2	116.2	17.01	7.833		
4,000.0	3,955.4	3,993.3	3,930.1	11.8	13.4	-33.82	640.0	136.0	137.3	119.8	17.50	7.849		
4,100.0	4,053.9	4,093.2	4,027.8	12.2	13.8	-33.85	660.3	140.4	141.4	123.4	17.98	7.863		
4,200.0	4,152.4	4,193.2	4,125.6	12.5	14.2	-33.89	680.6	144.8	145.5	127.0	18.47	7.877		
4,300.0	4,250.9	4,293.1	4,223.3	12.9	14.6	-33.92	700.9	149.2	149.6	130.7	18.96	7.890		
4,400.0	4,349.4	4,393.0	4,321.0	13.2	15.0	-33.95	721.2	153.6	153.7	134.3	19.45	7.902		
4,500.0	4,447.9	4,492.9	4,418.7	13.6	15.4	-33.91	741.5	158.0	158.2	138.3	19.92	7.940		
4,600.0	4,546.7	4,592.7	4,516.4	13.9	15.8	-33.56	761.8	162.3	164.0	143.7	20.30	8.078		
4,700.0	4,645.8	4,692.4	4,613.9	14.1	16.2	-32.92	782.1	166.7	171.3	150.7	20.60	8.315		
4,800.0	4,745.1	4,792.0	4,711.3	14.4	16.6	-32.05	802.3	171.1	180.1	159.3	20.83	8.648		
4,900.0	4,844.6	4,891.4	4,808.5	14.6	17.0	-31.01	822.5	175.5	190.5	169.5	20.99	9.073		
5,000.0	4,944.2	4,990.6	4,905.6	14.8	17.4	-29.83	842.7	179.8	202.3	181.2	21.11	9.588		
5,100.0	5,044.0	5,089.6	5,002.4	15.0	17.8	-28.57	862.8	184.2	215.8	194.7	21.18	10.189		

CC - Min centre to center distance or convergent point, SF - min separation factor, ES - min ellipse separation

# Anticollision Report

<b>Company:</b>	EnCana Oil & Gas (USA) Inc	<b>Local Co-ordinate Reference:</b>	Well Peppler Farms 1C-4H
<b>Project:</b>	DJ Wattenberg	<b>TVD Reference:</b>	WELL @ 5067.0ft (Ensign)
<b>Reference Site:</b>	S4-T3N-R68W (Peppler Farms)	<b>MD Reference:</b>	WELL @ 5067.0ft (Ensign)
<b>Site Error:</b>	0.0ft	<b>North Reference:</b>	True
<b>Reference Well:</b>	Peppler Farms 1C-4H	<b>Survey Calculation Method:</b>	Minimum Curvature
<b>Well Error:</b>	0.0ft	<b>Output errors are at</b>	2.00 sigma
<b>Reference Wellbore</b>	Hz	<b>Database:</b>	USA EDM 5000 Multi Users DB
<b>Reference Design:</b>	Plan #1	<b>Offset TVD Reference:</b>	Offset Datum

Offset Design S4-T3N-R68W (Peppler Farms) - Peppler Farms 1B-4H - Hz - Plan #1													Offset Site Error:	0.0 ft
Survey Program: 0-MWD													Offset Well Error:	0.0 ft
Reference		Offset		Semi Major Axis			Distance				Total Uncertainty Axis	Separation Factor	Warning	
Measured Depth (ft)	Vertical Depth (ft)	Measured Depth (ft)	Vertical Depth (ft)	Reference (ft)	Offset (ft)	Highside Toolface (°)	Offset Wellbore Centre +N/-S (ft)	+E/-W (ft)	Between Centres (ft)	Between Ellipses (ft)				
5,200.0	5,143.9	5,188.3	5,098.9	15.2	18.2	-27.27	882.8	188.5	231.0	209.7	21.24	10.874		
5,300.0	5,243.8	5,286.7	5,195.2	15.3	18.6	-25.97	902.8	192.8	247.8	226.5	21.29	11.639		
5,400.0	5,343.8	5,388.7	5,295.1	15.4	19.0	-24.68	922.9	197.2	265.6	244.3	21.33	12.451		
5,500.0	5,443.8	5,491.7	5,396.4	15.5	19.3	-4.79	941.4	201.2	283.1	249.7	33.43	8.468		
5,600.0	5,543.8	5,595.4	5,498.6	15.7	19.7	-3.82	958.2	204.8	299.1	265.1	34.01	8.794		
5,700.0	5,643.8	5,699.7	5,601.7	15.8	20.0	-3.03	973.4	208.1	313.4	278.8	34.53	9.075		
5,800.0	5,743.8	5,804.5	5,705.6	15.9	20.2	-2.40	986.7	211.0	325.9	290.9	35.00	9.312		
5,900.0	5,843.8	5,909.7	5,810.2	16.0	20.5	-1.89	998.2	213.5	336.8	301.4	35.43	9.506		
6,000.0	5,943.8	6,015.4	5,915.4	16.1	20.7	-1.49	1,007.9	215.5	345.9	310.1	35.82	9.656		
6,100.0	6,043.8	6,121.4	6,021.1	16.2	20.9	-1.18	1,015.7	217.2	353.2	317.0	36.17	9.764		
6,200.0	6,143.8	6,227.7	6,127.2	16.3	21.1	-0.96	1,021.6	218.5	358.7	322.2	36.49	9.832		
6,300.0	6,243.8	6,334.1	6,233.6	16.4	21.2	-0.81	1,025.6	219.4	362.5	325.7	36.77	9.858		
6,400.0	6,343.8	6,440.7	6,340.2	16.6	21.4	-0.74	1,027.6	219.8	364.4	327.4	37.01	9.845		
6,500.0	6,443.8	6,544.4	6,443.8	16.7	21.5	89.46	1,027.9	219.9	364.6	340.6	24.01	15.187		
6,540.6	6,484.2	6,584.8	6,484.2	16.7	21.5	90.00	1,027.9	219.9	364.6	340.6	24.02	15.182		
6,600.0	6,542.9	6,643.5	6,542.9	16.7	21.5	91.42	1,027.9	219.9	364.7	340.8	23.94	15.236		
6,700.0	6,639.3	6,739.9	6,639.3	16.7	21.6	95.26	1,027.9	219.9	366.4	342.7	23.66	15.482		
6,800.0	6,731.1	6,837.3	6,736.7	16.7	21.7	100.47	1,027.9	217.8	371.9	348.4	23.49	15.829		
6,900.0	6,816.5	6,943.3	6,841.4	16.8	21.8	105.82	1,027.9	201.9	381.4	357.7	23.65	16.128		
7,000.0	6,893.8	7,056.8	6,949.6	16.8	21.8	110.85	1,027.9	167.9	393.9	369.8	24.07	16.365		
7,100.0	6,961.6	7,178.9	7,058.4	17.0	21.8	115.44	1,027.9	112.9	408.5	383.8	24.67	16.559		
7,200.0	7,018.5	7,310.7	7,163.5	17.3	21.9	119.48	1,027.9	33.7	423.6	398.2	25.40	16.674		
7,300.0	7,063.4	7,452.5	7,258.4	17.9	22.1	122.83	1,027.9	-71.5	437.7	411.4	26.25	16.675		
7,400.0	7,095.5	7,603.9	7,334.7	18.7	22.6	125.36	1,027.9	-201.9	449.2	421.7	27.47	16.354		
7,500.0	7,114.1	7,762.9	7,383.5	19.9	23.5	126.93	1,027.9	-352.8	456.7	427.4	29.22	15.627		
7,600.0	7,119.0	7,918.8	7,398.0	21.4	25.0	127.43	1,027.9	-507.7	459.1	427.4	31.72	14.471		
7,700.0	7,119.0	8,018.8	7,398.0	23.1	26.3	127.43	1,027.9	-607.7	459.1	424.2	34.83	13.179		
7,800.0	7,119.0	8,118.8	7,398.0	24.9	27.8	127.43	1,027.9	-707.7	459.1	421.0	38.09	12.051		
7,900.0	7,119.0	8,218.8	7,398.0	26.9	29.4	127.43	1,027.9	-807.7	459.1	417.6	41.47	11.069		
8,000.0	7,119.0	8,318.8	7,398.0	28.9	31.2	127.43	1,027.9	-907.7	459.1	414.1	44.94	10.214		
8,100.0	7,119.0	8,418.8	7,398.0	31.0	33.1	127.43	1,027.9	-1,007.7	459.1	410.6	48.48	9.468		
8,200.0	7,119.0	8,518.8	7,398.0	33.2	35.1	127.43	1,027.9	-1,107.7	459.0	407.0	52.08	8.814		
8,300.0	7,119.0	8,618.8	7,398.0	35.4	37.2	127.43	1,027.9	-1,207.7	459.0	403.3	55.73	8.237		
8,400.0	7,119.0	8,718.8	7,398.0	37.7	39.3	127.43	1,027.8	-1,307.7	459.0	399.6	59.41	7.727		
8,500.0	7,119.0	8,818.8	7,398.0	40.0	41.5	127.43	1,027.8	-1,407.7	459.0	395.9	63.12	7.272		
8,600.0	7,119.0	8,918.8	7,398.0	42.3	43.7	127.43	1,027.8	-1,507.7	459.0	392.2	66.86	6.866		
8,700.0	7,119.0	9,018.8	7,398.0	44.6	45.9	127.43	1,027.8	-1,607.7	459.0	388.4	70.62	6.500		
8,800.0	7,119.0	9,118.8	7,398.0	46.9	48.2	127.43	1,027.8	-1,707.7	459.0	384.6	74.39	6.170		
8,900.0	7,119.0	9,218.8	7,398.0	49.3	50.5	127.43	1,027.8	-1,807.7	459.0	380.8	78.19	5.871		
9,000.0	7,119.0	9,318.8	7,398.0	51.6	52.8	127.43	1,027.8	-1,907.7	459.0	377.0	81.99	5.598		
9,100.0	7,119.0	9,418.8	7,398.0	54.0	55.1	127.43	1,027.8	-2,007.7	459.0	373.2	85.81	5.349		
9,200.0	7,119.0	9,518.8	7,398.0	56.4	57.4	127.43	1,027.8	-2,107.7	459.0	369.4	89.64	5.120		
9,300.0	7,119.0	9,618.8	7,398.0	58.8	59.8	127.44	1,027.8	-2,207.7	459.0	365.5	93.48	4.910		
9,400.0	7,119.0	9,718.8	7,398.0	61.2	62.1	127.44	1,027.8	-2,307.7	459.0	361.7	97.32	4.716		
9,500.0	7,119.0	9,818.8	7,398.0	63.6	64.5	127.44	1,027.8	-2,407.7	459.0	357.8	101.18	4.536		
9,600.0	7,119.0	9,918.8	7,398.0	66.0	66.8	127.44	1,027.8	-2,507.7	459.0	353.9	105.03	4.370		
9,700.0	7,119.0	10,018.8	7,398.0	68.4	69.2	127.44	1,027.8	-2,607.7	459.0	350.1	108.90	4.215		
9,800.0	7,119.0	10,118.8	7,398.0	70.8	71.6	127.44	1,027.8	-2,707.7	459.0	346.2	112.77	4.070		
9,900.0	7,119.0	10,218.8	7,398.0	73.2	74.0	127.44	1,027.8	-2,807.7	459.0	342.3	116.64	3.935		
10,000.0	7,119.0	10,318.8	7,398.0	75.7	76.4	127.44	1,027.8	-2,907.7	458.9	338.4	120.52	3.808		
10,100.0	7,119.0	10,418.8	7,398.0	78.1	78.8	127.44	1,027.8	-3,007.7	458.9	334.5	124.40	3.689		
10,200.0	7,119.0	10,518.8	7,398.0	80.5	81.2	127.44	1,027.8	-3,107.7	458.9	330.7	128.28	3.578		

CC - Min centre to center distance or convergent point, SF - min separation factor, ES - min ellipse separation

# Anticollision Report

<b>Company:</b>	EnCana Oil & Gas (USA) Inc	<b>Local Co-ordinate Reference:</b>	Well Peppler Farms 1C-4H
<b>Project:</b>	DJ Wattenberg	<b>TVD Reference:</b>	WELL @ 5067.0ft (Ensign)
<b>Reference Site:</b>	S4-T3N-R68W (Peppler Farms)	<b>MD Reference:</b>	WELL @ 5067.0ft (Ensign)
<b>Site Error:</b>	0.0ft	<b>North Reference:</b>	True
<b>Reference Well:</b>	Peppler Farms 1C-4H	<b>Survey Calculation Method:</b>	Minimum Curvature
<b>Well Error:</b>	0.0ft	<b>Output errors are at</b>	2.00 sigma
<b>Reference Wellbore</b>	Hz	<b>Database:</b>	USA EDM 5000 Multi Users DB
<b>Reference Design:</b>	Plan #1	<b>Offset TVD Reference:</b>	Offset Datum

Offset Design S4-T3N-R68W (Peppler Farms) - Peppler Farms 1B-4H - Hz - Plan #1													Offset Site Error:	0.0 ft
Survey Program: 0-MWD													Offset Well Error:	0.0 ft
Reference		Offset		Semi Major Axis			Distance						Warning	
Measured Depth (ft)	Vertical Depth (ft)	Measured Depth (ft)	Vertical Depth (ft)	Reference (ft)	Offset (ft)	Highside Toolface (°)	Offset Wellbore Centre +N/-S (ft)	+E/-W (ft)	Between Centres (ft)	Between Ellipses (ft)	Total Uncertainty Axis	Separation Factor		
10,300.0	7,119.0	10,618.8	7,398.0	82.9	83.6	127.44	1,027.8	-3,207.7	458.9	326.8	132.17	3.472		
10,400.0	7,119.0	10,718.8	7,398.0	85.4	86.0	127.44	1,027.8	-3,307.7	458.9	322.9	136.06	3.373		
10,500.0	7,119.0	10,818.8	7,398.0	87.8	88.5	127.44	1,027.8	-3,407.7	458.9	319.0	139.95	3.279		
10,600.0	7,119.0	10,918.8	7,398.0	90.3	90.9	127.44	1,027.8	-3,507.7	458.9	315.1	143.85	3.190		
10,700.0	7,119.0	11,018.8	7,398.0	92.7	93.3	127.44	1,027.8	-3,607.7	458.9	311.2	147.74	3.106		
10,800.0	7,119.0	11,118.8	7,398.0	95.1	95.7	127.44	1,027.8	-3,707.7	458.9	307.3	151.64	3.026		
10,900.0	7,119.0	11,218.8	7,398.0	97.6	98.2	127.44	1,027.8	-3,807.7	458.9	303.4	155.54	2.950		
11,000.0	7,119.0	11,318.8	7,398.0	100.0	100.6	127.44	1,027.7	-3,907.7	458.9	299.4	159.44	2.878		
11,100.0	7,119.0	11,418.8	7,398.0	102.5	103.0	127.44	1,027.7	-4,007.7	458.9	295.5	163.35	2.809		
11,200.0	7,119.0	11,518.8	7,398.0	104.9	105.5	127.45	1,027.7	-4,107.7	458.9	291.6	167.25	2.744		
11,300.0	7,119.0	11,618.8	7,398.0	107.4	107.9	127.45	1,027.7	-4,207.7	458.9	287.7	171.16	2.681		
11,400.0	7,119.0	11,718.8	7,398.0	109.8	110.3	127.45	1,027.7	-4,307.7	458.9	283.8	175.07	2.621		
11,500.0	7,119.0	11,818.8	7,398.0	112.3	112.8	127.45	1,027.7	-4,407.7	458.9	279.9	178.98	2.564		
11,600.0	7,119.0	11,918.8	7,398.0	114.7	115.2	127.45	1,027.7	-4,507.7	458.9	276.0	182.89	2.509		
11,653.2	7,119.0	11,972.0	7,398.0	116.0	116.5	127.45	1,027.7	-4,561.0	458.9	273.9	184.97	2.481		
11,678.4	7,119.0	11,996.4	7,398.0	116.7	117.1	127.45	1,027.7	-4,585.3	458.9	272.9	185.94	2.468 SF		

# Anticollision Report

<b>Company:</b>	EnCana Oil & Gas (USA) Inc	<b>Local Co-ordinate Reference:</b>	Well Peppler Farms 1C-4H
<b>Project:</b>	DJ Wattenberg	<b>TVD Reference:</b>	WELL @ 5067.0ft (Ensign)
<b>Reference Site:</b>	S4-T3N-R68W (Peppler Farms)	<b>MD Reference:</b>	WELL @ 5067.0ft (Ensign)
<b>Site Error:</b>	0.0ft	<b>North Reference:</b>	True
<b>Reference Well:</b>	Peppler Farms 1C-4H	<b>Survey Calculation Method:</b>	Minimum Curvature
<b>Well Error:</b>	0.0ft	<b>Output errors are at</b>	2.00 sigma
<b>Reference Wellbore</b>	Hz	<b>Database:</b>	USA EDM 5000 Multi Users DB
<b>Reference Design:</b>	Plan #1	<b>Offset TVD Reference:</b>	Offset Datum

Offset Design S4-T3N-R68W (Peppler Farms) - Peppler Farms 1D-4H - Hz - Plan #1													Offset Site Error:	0.0 ft
Survey Program: 0-MWD													Offset Well Error:	0.0 ft
Reference		Offset		Semi Major Axis		Distance		Total		Separation		Warning		
Measured Depth (ft)	Vertical Depth (ft)	Measured Depth (ft)	Vertical Depth (ft)	Reference (ft)	Offset (ft)	Highside Toolface (°)	Offset Wellbore Centre +N/-S (ft)	+E/-W (ft)	Between Centres (ft)	Between Ellipses (ft)	Uncertainty Axis	Factor		
0.0	0.0	0.0	0.0	0.0	0.0	-180.00	-10.9	0.0	10.9					
100.0	100.0	100.0	100.0	0.2	0.2	-180.00	-10.9	0.0	10.9	10.6	0.30	35.986		
200.0	200.0	200.0	200.0	0.3	0.3	-180.00	-10.9	0.0	10.9	10.3	0.65	16.742		
300.0	300.0	300.0	300.0	0.5	0.5	-180.00	-10.9	0.0	10.9	9.9	1.00	10.909		
400.0	400.0	400.0	400.0	0.7	0.7	-180.00	-10.9	0.0	10.9	9.6	1.35	8.090 CC, ES		
500.0	500.0	500.0	500.0	0.9	0.8	162.66	-10.9	0.0	11.8	10.1	1.70	6.917		
600.0	600.0	600.0	600.0	1.0	1.0	165.79	-10.9	0.0	14.3	12.2	2.05	6.970		
700.0	699.9	700.1	700.1	1.2	1.2	167.91	-10.2	0.5	17.7	15.4	2.40	7.404		
800.0	799.7	800.3	800.3	1.4	1.4	168.26	-8.0	1.9	21.4	18.6	2.75	7.779		
900.0	899.4	900.7	900.5	1.6	1.6	167.58	-4.3	4.2	25.1	22.0	3.10	8.107		
1,000.0	998.9	1,001.0	1,000.7	1.8	1.8	166.28	0.9	7.6	29.0	25.6	3.45	8.402		
1,100.0	1,098.3	1,101.4	1,100.8	2.1	2.0	164.60	7.5	11.8	33.1	29.2	3.81	8.670		
1,200.0	1,197.4	1,201.9	1,200.8	2.3	2.2	162.69	15.7	17.0	37.3	33.1	4.19	8.913		
1,300.0	1,296.3	1,302.3	1,300.6	2.6	2.4	160.63	25.3	23.2	41.7	37.2	4.57	9.129		
1,400.0	1,394.9	1,402.9	1,400.2	2.9	2.7	158.50	36.4	30.3	46.4	41.4	4.98	9.316		
1,500.0	1,493.4	1,503.4	1,499.7	3.3	2.9	155.97	49.0	38.3	50.6	45.1	5.43	9.307		
1,600.0	1,591.9	1,604.0	1,598.9	3.6	3.2	152.62	63.0	47.3	53.5	47.5	5.94	9.007		
1,700.0	1,690.4	1,703.9	1,697.3	3.9	3.6	149.06	77.6	56.6	55.9	49.4	6.48	8.629		
1,800.0	1,788.9	1,803.8	1,795.7	4.2	3.9	145.81	92.2	66.0	58.6	51.5	7.06	8.298		
1,900.0	1,887.3	1,903.8	1,894.1	4.6	4.2	142.85	106.8	75.3	61.4	53.8	7.67	8.009		
2,000.0	1,985.8	2,003.7	1,992.5	4.9	4.5	140.17	121.5	84.7	64.4	56.1	8.30	7.760		
2,100.0	2,084.3	2,103.6	2,090.9	5.3	4.9	137.72	136.1	94.0	67.6	58.6	8.95	7.544		
2,200.0	2,182.8	2,203.5	2,189.3	5.6	5.2	135.50	150.7	103.4	70.8	61.2	9.62	7.358		
2,300.0	2,281.3	2,303.4	2,287.6	5.9	5.5	133.47	165.3	112.7	74.1	63.8	10.30	7.197		
2,400.0	2,379.7	2,403.3	2,386.0	6.3	5.9	131.62	179.9	122.1	77.5	66.5	10.98	7.058		
2,500.0	2,478.2	2,503.2	2,484.4	6.6	6.2	129.92	194.5	131.4	81.0	69.3	11.68	6.938		
2,600.0	2,576.7	2,603.1	2,582.8	7.0	6.5	128.37	209.2	140.7	84.6	72.2	12.37	6.834		
2,700.0	2,675.2	2,703.0	2,681.2	7.3	6.9	126.94	223.8	150.1	88.2	75.1	13.08	6.743		
2,800.0	2,773.7	2,803.0	2,779.6	7.7	7.2	125.63	238.4	159.4	91.8	78.1	13.78	6.664		
2,900.0	2,872.1	2,902.9	2,878.0	8.0	7.6	124.41	253.0	168.8	95.5	81.1	14.49	6.595		
3,000.0	2,970.6	3,002.8	2,976.4	8.4	7.9	123.29	267.6	178.1	99.3	84.1	15.20	6.534		
3,100.0	3,069.1	3,102.5	3,074.6	8.7	8.2	122.32	282.1	187.4	103.1	87.2	15.90	6.486		
3,200.0	3,167.6	3,201.8	3,172.7	9.0	8.6	122.12	295.4	195.9	107.4	90.9	16.52	6.502		
3,300.0	3,266.1	3,301.1	3,270.9	9.4	8.8	122.78	307.2	203.5	112.2	95.2	17.05	6.581		
3,400.0	3,364.5	3,400.0	3,369.1	9.7	9.1	124.17	317.6	210.1	117.7	100.2	17.49	6.725		
3,500.0	3,463.0	3,499.2	3,467.7	10.1	9.4	126.17	326.5	215.8	123.8	106.0	17.85	6.938		
3,600.0	3,561.5	3,597.9	3,566.0	10.4	9.6	128.66	334.0	220.6	130.8	112.7	18.10	7.226		
3,700.0	3,660.0	3,696.3	3,664.2	10.8	9.8	131.51	340.1	224.5	138.8	120.6	18.27	7.599		
3,800.0	3,758.5	3,794.4	3,762.1	11.1	9.9	134.60	344.7	227.4	148.1	129.7	18.36	8.065		
3,900.0	3,857.0	3,892.0	3,859.6	11.5	10.1	137.82	347.8	229.4	158.6	140.2	18.38	8.631		
4,000.0	3,955.4	3,989.2	3,956.8	11.8	10.2	141.08	349.6	230.6	170.6	152.3	18.34	9.302		
4,100.0	4,053.9	4,086.3	4,053.9	12.2	10.3	144.28	350.0	230.9	184.2	165.9	18.28	10.075		
4,200.0	4,152.4	4,184.8	4,152.4	12.5	10.5	147.19	350.0	230.9	198.6	180.4	18.24	10.886		
4,300.0	4,250.9	4,283.3	4,250.9	12.9	10.6	149.71	350.0	230.9	213.5	195.2	18.25	11.694		
4,400.0	4,349.4	4,381.7	4,349.4	13.2	10.7	151.90	350.0	230.9	228.7	210.4	18.31	12.492		
4,500.0	4,447.9	4,480.3	4,447.9	13.6	10.8	153.82	350.0	230.9	243.8	225.4	18.40	13.252		
4,600.0	4,546.7	4,579.1	4,546.7	13.9	11.0	155.37	350.0	230.9	257.7	239.1	18.54	13.901		
4,700.0	4,645.8	4,678.2	4,645.8	14.1	11.1	156.62	350.0	230.9	270.1	251.4	18.71	14.435		
4,800.0	4,745.1	4,777.5	4,745.1	14.4	11.2	157.62	350.0	230.9	281.0	262.1	18.91	14.856		
4,900.0	4,844.6	4,877.0	4,844.6	14.6	11.3	158.41	350.0	230.9	290.4	271.2	19.14	15.169		
5,000.0	4,944.2	4,976.6	4,944.2	14.8	11.5	159.03	350.0	230.9	298.2	278.8	19.39	15.379		
5,100.0	5,044.0	5,076.4	5,044.0	15.0	11.6	159.50	350.0	230.9	304.4	284.7	19.65	15.490		

CC - Min centre to center distance or convergent point, SF - min separation factor, ES - min ellipse separation

# Anticollision Report

<b>Company:</b>	EnCana Oil & Gas (USA) Inc	<b>Local Co-ordinate Reference:</b>	Well Peppler Farms 1C-4H
<b>Project:</b>	DJ Wattenberg	<b>TVD Reference:</b>	WELL @ 5067.0ft (Ensign)
<b>Reference Site:</b>	S4-T3N-R68W (Peppler Farms)	<b>MD Reference:</b>	WELL @ 5067.0ft (Ensign)
<b>Site Error:</b>	0.0ft	<b>North Reference:</b>	True
<b>Reference Well:</b>	Peppler Farms 1C-4H	<b>Survey Calculation Method:</b>	Minimum Curvature
<b>Well Error:</b>	0.0ft	<b>Output errors are at</b>	2.00 sigma
<b>Reference Wellbore</b>	Hz	<b>Database:</b>	USA EDM 5000 Multi Users DB
<b>Reference Design:</b>	Plan #1	<b>Offset TVD Reference:</b>	Offset Datum

Offset Design S4-T3N-R68W (Peppler Farms) - Peppler Farms 1D-4H - Hz - Plan #1													Offset Site Error:	0.0 ft
Survey Program: 0-MWD													Offset Well Error:	0.0 ft
Reference		Offset		Semi Major Axis			Distance						Warning	
Measured Depth (ft)	Vertical Depth (ft)	Measured Depth (ft)	Vertical Depth (ft)	Reference (ft)	Offset (ft)	Highside Toolface (°)	Offset Wellbore Centre +N/-S (ft)	+E/-W (ft)	Between Centres (ft)	Between Ellipses (ft)	Total Uncertainty Axis	Separation Factor		
5,200.0	5,143.9	5,176.3	5,143.9	15.2	11.7	159.83	350.0	230.9	309.0	289.0	19.92	15.508		
5,300.0	5,243.8	5,276.2	5,243.8	15.3	11.9	160.04	350.0	230.9	311.9	291.7	20.21	15.436		
5,400.0	5,343.8	5,376.2	5,343.8	15.4	12.0	160.13	350.0	230.9	313.2	292.7	20.50	15.279		
5,500.0	5,443.8	5,476.2	5,443.8	15.5	12.1	178.84	350.0	230.9	313.3	286.9	26.37	11.881		
5,600.0	5,543.8	5,576.2	5,543.8	15.7	12.3	178.84	350.0	230.9	313.3	286.7	26.63	11.766		
5,700.0	5,643.8	5,676.2	5,643.8	15.8	12.4	178.84	350.0	230.9	313.3	286.4	26.89	11.652		
5,800.0	5,743.8	5,776.2	5,743.8	15.9	12.6	178.84	350.0	230.9	313.3	286.1	27.15	11.539		
5,900.0	5,843.8	5,876.2	5,843.8	16.0	12.7	178.84	350.0	230.9	313.3	285.9	27.41	11.428		
6,000.0	5,943.8	5,976.2	5,943.8	16.1	12.8	178.84	350.0	230.9	313.3	285.6	27.68	11.318		
6,100.0	6,043.8	6,076.2	6,043.8	16.2	13.0	178.84	350.0	230.9	313.3	285.3	27.95	11.209		
6,200.0	6,143.8	6,176.2	6,143.8	16.3	13.1	178.84	350.0	230.9	313.3	285.1	28.22	11.102		
6,300.0	6,243.8	6,276.2	6,243.8	16.4	13.3	178.84	350.0	230.9	313.3	284.8	28.49	10.997		
6,400.0	6,343.8	6,376.2	6,343.8	16.6	13.4	178.84	350.0	230.9	313.3	284.5	28.76	10.892		
6,440.8	6,384.7	6,417.0	6,384.7	16.6	13.5	-91.25	350.0	230.9	313.3	289.4	23.87	13.126		
6,500.0	6,443.8	6,476.2	6,443.8	16.7	13.6	-91.38	350.0	230.9	313.3	289.3	24.07	13.017		
6,600.0	6,542.9	6,575.3	6,542.9	16.7	13.7	-93.62	350.0	230.9	313.9	289.3	24.54	12.789		
6,700.0	6,639.3	6,671.7	6,639.3	16.7	13.8	-97.98	350.0	230.9	316.7	291.5	25.13	12.602		
6,800.0	6,731.1	6,770.1	6,737.6	16.7	14.0	-103.90	350.0	228.7	324.3	298.7	25.65	12.644		
6,900.0	6,816.5	6,878.1	6,844.2	16.8	14.0	-109.90	350.0	212.2	336.3	310.5	25.78	13.045		
7,000.0	6,893.8	6,993.9	6,954.4	16.8	14.0	-115.40	350.1	176.9	351.4	325.9	25.47	13.794		
7,100.0	6,961.6	7,118.7	7,065.1	17.0	14.0	-120.29	350.1	119.6	368.1	343.2	24.88	14.795		
7,200.0	7,018.5	7,253.3	7,171.4	17.3	14.1	-124.44	350.1	37.4	384.9	360.5	24.34	15.811		
7,300.0	7,063.4	7,397.9	7,266.3	17.9	14.5	-127.76	350.1	-71.5	399.9	375.5	24.36	16.417		
7,400.0	7,095.5	7,551.7	7,341.1	18.7	15.5	-130.12	350.1	-205.5	411.4	386.0	25.46	16.162		
7,500.0	7,114.1	7,712.3	7,386.8	19.9	17.6	-131.44	350.1	-359.1	418.2	390.2	27.99	14.941		
7,600.0	7,119.0	7,861.6	7,398.0	21.4	20.1	-131.69	350.1	-507.7	419.5	387.9	31.57	13.289		
7,700.0	7,119.0	7,961.6	7,398.0	23.1	22.0	-131.69	350.1	-607.7	419.5	385.1	34.38	12.200		
7,800.0	7,119.0	8,061.6	7,398.0	24.9	24.0	-131.69	350.1	-707.7	419.5	382.1	37.35	11.230		
7,900.0	7,119.0	8,161.6	7,398.0	26.9	26.0	-131.69	350.1	-807.7	419.5	379.0	40.44	10.372		
8,000.0	7,119.0	8,261.6	7,398.0	28.9	28.2	-131.69	350.1	-907.7	419.5	375.9	43.63	9.615		
8,100.0	7,119.0	8,361.6	7,398.0	31.0	30.4	-131.69	350.1	-1,007.7	419.5	372.6	46.89	8.946		
8,200.0	7,119.0	8,461.6	7,398.0	33.2	32.6	-131.69	350.1	-1,107.7	419.5	369.3	50.21	8.354		
8,300.0	7,119.0	8,561.6	7,398.0	35.4	34.9	-131.69	350.1	-1,207.7	419.5	365.9	53.59	7.828		
8,400.0	7,119.0	8,661.6	7,398.0	37.7	37.2	-131.69	350.1	-1,307.7	419.5	362.5	57.00	7.359		
8,500.0	7,119.0	8,761.6	7,398.0	40.0	39.5	-131.69	350.1	-1,407.7	419.5	359.0	60.45	6.939		
8,600.0	7,119.0	8,861.6	7,398.0	42.3	41.8	-131.69	350.1	-1,507.7	419.5	355.6	63.93	6.562		
8,700.0	7,119.0	8,961.6	7,398.0	44.6	44.1	-131.69	350.1	-1,607.7	419.5	352.1	67.43	6.221		
8,800.0	7,119.0	9,061.6	7,398.0	46.9	46.5	-131.69	350.1	-1,707.7	419.5	348.5	70.96	5.912		
8,900.0	7,119.0	9,161.6	7,398.0	49.3	48.9	-131.69	350.1	-1,807.7	419.5	345.0	74.50	5.631		
9,000.0	7,119.0	9,261.6	7,398.0	51.6	51.3	-131.69	350.1	-1,907.7	419.5	341.4	78.05	5.375		
9,100.0	7,119.0	9,361.6	7,398.0	54.0	53.7	-131.69	350.1	-2,007.7	419.5	337.9	81.62	5.140		
9,200.0	7,119.0	9,461.6	7,398.0	56.4	56.1	-131.69	350.1	-2,107.7	419.5	334.3	85.20	4.924		
9,300.0	7,119.0	9,561.6	7,398.0	58.8	58.5	-131.69	350.1	-2,207.7	419.5	330.7	88.79	4.724		
9,400.0	7,119.0	9,661.6	7,398.0	61.2	60.9	-131.69	350.1	-2,307.7	419.5	327.1	92.39	4.540		
9,500.0	7,119.0	9,761.6	7,398.0	63.6	63.3	-131.69	350.1	-2,407.7	419.5	323.5	96.00	4.370		
9,600.0	7,119.0	9,861.6	7,398.0	66.0	65.7	-131.69	350.1	-2,507.7	419.5	319.9	99.61	4.211		
9,700.0	7,119.0	9,961.6	7,398.0	68.4	68.1	-131.69	350.1	-2,607.7	419.5	316.3	103.24	4.063		
9,800.0	7,119.0	10,061.6	7,398.0	70.8	70.5	-131.69	350.1	-2,707.7	419.5	312.6	106.86	3.926		
9,900.0	7,119.0	10,161.6	7,398.0	73.2	73.0	-131.69	350.1	-2,807.7	419.5	309.0	110.49	3.797		
10,000.0	7,119.0	10,261.6	7,398.0	75.7	75.4	-131.69	350.1	-2,907.7	419.5	305.4	114.13	3.676		
10,100.0	7,119.0	10,361.6	7,398.0	78.1	77.8	-131.69	350.1	-3,007.7	419.5	301.7	117.77	3.562		
10,200.0	7,119.0	10,461.6	7,398.0	80.5	80.3	-131.69	350.1	-3,107.7	419.5	298.1	121.42	3.455		

CC - Min centre to center distance or convergent point, SF - min separation factor, ES - min ellipse separation

# Anticollision Report

<b>Company:</b>	EnCana Oil & Gas (USA) Inc	<b>Local Co-ordinate Reference:</b>	Well Peppler Farms 1C-4H
<b>Project:</b>	DJ Wattenberg	<b>TVD Reference:</b>	WELL @ 5067.0ft (Ensign)
<b>Reference Site:</b>	S4-T3N-R68W (Peppler Farms)	<b>MD Reference:</b>	WELL @ 5067.0ft (Ensign)
<b>Site Error:</b>	0.0ft	<b>North Reference:</b>	True
<b>Reference Well:</b>	Peppler Farms 1C-4H	<b>Survey Calculation Method:</b>	Minimum Curvature
<b>Well Error:</b>	0.0ft	<b>Output errors are at</b>	2.00 sigma
<b>Reference Wellbore</b>	Hz	<b>Database:</b>	USA EDM 5000 Multi Users DB
<b>Reference Design:</b>	Plan #1	<b>Offset TVD Reference:</b>	Offset Datum

Offset Design S4-T3N-R68W (Peppler Farms) - Peppler Farms 1D-4H - Hz - Plan #1													Offset Site Error:	0.0 ft
Survey Program: 0-MWD													Offset Well Error:	0.0 ft
Reference		Offset		Semi Major Axis			Distance							Warning
Measured Depth (ft)	Vertical Depth (ft)	Measured Depth (ft)	Vertical Depth (ft)	Reference (ft)	Offset (ft)	Highside Toolface (°)	Offset Wellbore Centre +N/-S (ft)	+E/-W (ft)	Between Centres (ft)	Between Ellipses (ft)	Total Uncertainty Axis	Separation Factor		
10,300.0	7,119.0	10,561.6	7,398.0	82.9	82.7	-131.69	350.1	-3,207.7	419.5	294.4	125.07	3.354		
10,400.0	7,119.0	10,661.6	7,398.0	85.4	85.2	-131.69	350.1	-3,307.7	419.5	290.8	128.72	3.259		
10,500.0	7,119.0	10,761.6	7,398.0	87.8	87.6	-131.69	350.1	-3,407.7	419.5	287.1	132.37	3.169		
10,600.0	7,119.0	10,861.6	7,398.0	90.3	90.1	-131.69	350.1	-3,507.7	419.5	283.5	136.03	3.084		
10,700.0	7,119.0	10,961.6	7,398.0	92.7	92.5	-131.69	350.1	-3,607.7	419.5	279.8	139.69	3.003		
10,800.0	7,119.0	11,061.6	7,398.0	95.1	94.9	-131.69	350.1	-3,707.7	419.5	276.2	143.35	2.926		
10,900.0	7,119.0	11,161.6	7,398.0	97.6	97.4	-131.69	350.1	-3,807.7	419.5	272.5	147.02	2.853		
11,000.0	7,119.0	11,261.6	7,398.0	100.0	99.8	-131.69	350.1	-3,907.7	419.5	268.8	150.68	2.784		
11,100.0	7,119.0	11,361.6	7,398.0	102.5	102.3	-131.69	350.1	-4,007.7	419.5	265.2	154.35	2.718		
11,200.0	7,119.0	11,461.6	7,398.0	104.9	104.8	-131.69	350.1	-4,107.7	419.5	261.5	158.02	2.655		
11,300.0	7,119.0	11,561.6	7,398.0	107.4	107.2	-131.69	350.1	-4,207.7	419.5	257.8	161.69	2.594		
11,400.0	7,119.0	11,661.6	7,398.0	109.8	109.7	-131.69	350.1	-4,307.7	419.5	254.1	165.37	2.537		
11,500.0	7,119.0	11,761.6	7,398.0	112.3	112.1	-131.69	350.1	-4,407.7	419.5	250.5	169.04	2.482		
11,600.0	7,119.0	11,861.6	7,398.0	114.7	114.6	-131.69	350.1	-4,507.7	419.5	246.8	172.72	2.429		
11,646.3	7,119.0	11,907.8	7,398.0	115.9	115.7	-131.69	350.1	-4,554.0	419.5	245.1	174.42	2.405		
11,678.4	7,119.0	11,939.3	7,398.0	116.7	116.5	-131.69	350.1	-4,585.4	419.5	243.9	175.59	2.389 SF		

# Anticollision Report

<b>Company:</b>	EnCana Oil & Gas (USA) Inc	<b>Local Co-ordinate Reference:</b>	Well Peppler Farms 1C-4H
<b>Project:</b>	DJ Wattenberg	<b>TVD Reference:</b>	WELL @ 5067.0ft (Ensign)
<b>Reference Site:</b>	S4-T3N-R68W (Peppler Farms)	<b>MD Reference:</b>	WELL @ 5067.0ft (Ensign)
<b>Site Error:</b>	0.0ft	<b>North Reference:</b>	True
<b>Reference Well:</b>	Peppler Farms 1C-4H	<b>Survey Calculation Method:</b>	Minimum Curvature
<b>Well Error:</b>	0.0ft	<b>Output errors are at</b>	2.00 sigma
<b>Reference Wellbore</b>	Hz	<b>Database:</b>	USA EDM 5000 Multi Users DB
<b>Reference Design:</b>	Plan #1	<b>Offset TVD Reference:</b>	Offset Datum

Offset Design S4-T3N-R68W (Peppler Farms) - Peppler Farms 1E-4H - Hz - Plan #1													Offset Site Error:	0.0 ft
Survey Program: 0-MWD													Offset Well Error:	0.0 ft
Reference		Offset		Semi Major Axis		Highside Toolface (°)	Distance		Total Uncertainty Axis	Separation Factor	Warning			
Measured Depth (ft)	Vertical Depth (ft)	Measured Depth (ft)	Vertical Depth (ft)	Reference (ft)	Offset (ft)		Offset Wellbore Centre +N/-S (ft)	+E/-W (ft)						
0.0	0.0	0.0	0.0	0.0	0.0	-180.00	-18.2	0.0	18.2					
100.0	100.0	99.0	99.0	0.2	0.2	-180.00	-18.2	0.0	18.2	17.9	0.30	60.279		
200.0	200.0	199.0	199.0	0.3	0.3	-180.00	-18.2	0.0	18.2	17.6	0.65	27.979		
300.0	300.0	299.0	299.0	0.5	0.5	-180.00	-18.2	0.0	18.2	17.2	1.00	18.213		
400.0	400.0	399.0	399.0	0.7	0.7	-180.00	-18.2	0.0	18.2	16.9	1.35	13.501 CC, ES		
500.0	500.0	499.0	499.0	0.9	0.8	162.14	-18.2	0.0	19.0	17.3	1.70	11.214		
600.0	600.0	599.0	599.0	1.0	1.0	164.27	-18.2	0.0	21.5	19.5	2.05	10.528 SF		
700.0	699.9	698.9	698.9	1.2	1.2	166.89	-18.2	0.0	25.8	23.4	2.40	10.762		
800.0	799.7	798.7	798.7	1.4	1.4	169.38	-18.2	0.0	31.8	29.0	2.74	11.577		
900.0	899.4	898.6	898.6	1.6	1.5	170.33	-18.0	0.8	39.2	36.1	3.09	12.672		
1,000.0	998.9	998.5	998.5	1.8	1.7	169.37	-17.4	3.3	47.6	44.2	3.44	13.845		
1,100.0	1,098.3	1,098.4	1,098.3	2.1	1.9	167.39	-16.4	7.6	57.2	53.4	3.80	15.071		
1,200.0	1,197.4	1,198.1	1,197.8	2.3	2.1	164.94	-15.0	13.4	68.0	63.8	4.16	16.333		
1,300.0	1,296.3	1,297.7	1,297.1	2.6	2.3	162.30	-13.2	21.0	80.1	75.5	4.55	17.610		
1,400.0	1,394.9	1,397.0	1,396.0	2.9	2.5	159.67	-11.0	30.2	93.5	88.6	4.95	18.875		
1,500.0	1,493.4	1,496.3	1,494.5	3.3	2.7	157.00	-8.4	41.1	107.6	102.2	5.40	19.934		
1,600.0	1,591.9	1,595.4	1,592.8	3.6	3.0	154.15	-5.4	53.6	121.7	115.8	5.88	20.697		
1,700.0	1,690.4	1,694.2	1,690.7	3.9	3.2	151.50	-2.3	67.0	135.9	129.5	6.38	21.296		
1,800.0	1,788.9	1,793.0	1,788.5	4.2	3.5	149.36	0.9	80.4	150.4	143.5	6.90	21.798		
1,900.0	1,887.3	1,891.8	1,886.4	4.6	3.7	147.59	4.1	93.7	165.0	157.6	7.43	22.221		
2,000.0	1,985.8	1,990.6	1,984.2	4.9	4.0	146.11	7.3	107.1	179.8	171.8	7.96	22.582		
2,100.0	2,084.3	2,089.4	2,082.1	5.3	4.3	144.86	10.5	120.5	194.6	186.1	8.50	22.892		
2,200.0	2,182.8	2,188.2	2,179.9	5.6	4.6	143.78	13.7	133.9	209.6	200.5	9.05	23.161		
2,300.0	2,281.3	2,287.0	2,277.7	5.9	4.8	142.85	16.9	147.3	224.6	215.0	9.60	23.397		
2,400.0	2,379.7	2,385.8	2,375.6	6.3	5.1	142.04	20.1	160.6	239.6	229.5	10.15	23.604		
2,500.0	2,478.2	2,484.6	2,473.4	6.6	5.4	141.32	23.2	174.0	254.7	244.0	10.71	23.787		
2,600.0	2,576.7	2,583.9	2,571.8	7.0	5.7	140.81	26.3	186.9	269.8	258.5	11.25	23.986		
2,700.0	2,675.2	2,683.4	2,670.6	7.3	5.9	140.69	29.0	198.1	284.7	272.9	11.76	24.213		
2,800.0	2,773.7	2,782.9	2,769.6	7.7	6.2	140.93	31.3	207.6	299.3	287.1	12.23	24.470		
2,900.0	2,872.1	2,882.3	2,868.8	8.0	6.4	141.45	33.1	215.5	313.8	301.1	12.68	24.758		
3,000.0	2,970.6	2,981.8	2,968.0	8.4	6.6	142.23	34.6	221.7	328.2	315.1	13.08	25.083		
3,100.0	3,069.1	3,081.0	3,067.1	8.7	6.8	143.24	35.7	226.3	342.5	329.0	13.46	25.448		
3,200.0	3,167.6	3,180.1	3,166.2	9.0	6.9	144.44	36.4	229.1	356.7	342.9	13.80	25.859		
3,300.0	3,266.1	3,279.0	3,265.0	9.4	7.1	145.80	36.6	230.3	371.1	357.0	14.10	26.322		
3,400.0	3,364.5	3,377.5	3,363.5	9.7	7.2	147.24	36.7	230.3	385.7	371.3	14.39	26.809		
3,500.0	3,463.0	3,476.0	3,462.0	10.1	7.3	148.58	36.7	230.3	400.4	385.8	14.67	27.294		
3,600.0	3,561.5	3,574.5	3,560.5	10.4	7.5	149.83	36.7	230.3	415.4	400.5	14.96	27.773		
3,700.0	3,660.0	3,672.9	3,659.0	10.8	7.6	150.98	36.7	230.3	430.6	415.3	15.24	28.245		
3,800.0	3,758.5	3,771.4	3,757.5	11.1	7.8	152.06	36.7	230.3	445.9	430.4	15.53	28.709		
3,900.0	3,857.0	3,869.9	3,856.0	11.5	7.9	153.07	36.7	230.3	461.4	445.5	15.82	29.162		
4,000.0	3,955.4	3,968.4	3,954.4	11.8	8.1	154.01	36.7	230.3	476.9	460.8	16.11	29.605		
4,100.0	4,053.9	4,066.9	4,052.9	12.2	8.2	154.89	36.7	230.3	492.7	476.3	16.40	30.037		



# Anticollision Report

<b>Company:</b>	EnCana Oil & Gas (USA) Inc	<b>Local Co-ordinate Reference:</b>	Well Peppler Farms 1C-4H
<b>Project:</b>	DJ Wattenberg	<b>TVD Reference:</b>	WELL @ 5067.0ft (Ensign)
<b>Reference Site:</b>	S4-T3N-R68W (Peppler Farms)	<b>MD Reference:</b>	WELL @ 5067.0ft (Ensign)
<b>Site Error:</b>	0.0ft	<b>North Reference:</b>	True
<b>Reference Well:</b>	Peppler Farms 1C-4H	<b>Survey Calculation Method:</b>	Minimum Curvature
<b>Well Error:</b>	0.0ft	<b>Output errors are at</b>	2.00 sigma
<b>Reference Wellbore</b>	Hz	<b>Database:</b>	USA EDM 5000 Multi Users DB
<b>Reference Design:</b>	Plan #1	<b>Offset TVD Reference:</b>	Offset Datum

Offset Design S4-T3N-R68W (Peppler Farms) - Peppler Farms 1F-4H - Hz - Plan #1													Offset Site Error: 0.0 ft	
Survey Program: 0-MWD													Offset Well Error: 0.0 ft	
Reference		Offset		Semi Major Axis			Distance						Warning	
Measured Depth (ft)	Vertical Depth (ft)	Measured Depth (ft)	Vertical Depth (ft)	Reference (ft)	Offset (ft)	Highside Toolface (°)	Offset Wellbore Centre +N/-S (ft)	+E/-W (ft)	Between Centres (ft)	Between Ellipses (ft)	Total Uncertainty Axis	Separation Factor		
0.0	0.0	0.0	0.0	0.0	0.0	180.00	-29.1	0.0	29.2					
100.0	100.0	99.0	99.0	0.2	0.2	180.00	-29.1	0.0	29.1	28.8	0.30	96.446		
200.0	200.0	199.0	199.0	0.3	0.3	180.00	-29.1	0.0	29.1	28.5	0.65	44.766		
300.0	300.0	299.0	299.0	0.5	0.5	180.00	-29.1	0.0	29.1	28.1	1.00	29.141		
400.0	400.0	399.0	399.0	0.7	0.7	180.00	-29.1	0.0	29.1	27.8	1.35	21.601 CC, ES		
500.0	500.0	499.0	499.0	0.9	0.8	161.83	-29.1	0.0	30.0	28.3	1.70	17.650		
600.0	600.0	599.0	599.0	1.0	1.0	163.27	-29.1	0.0	32.5	30.4	2.05	15.862		
700.0	699.9	698.4	698.4	1.2	1.2	164.39	-29.8	0.5	37.3	34.9	2.39	15.589 SF		
800.0	799.7	797.5	797.4	1.4	1.4	164.43	-31.9	2.0	45.2	42.5	2.74	16.493		
900.0	899.4	896.2	896.1	1.6	1.6	163.84	-35.4	4.4	56.2	53.1	3.09	18.163		
1,000.0	998.9	994.4	994.0	1.8	1.7	162.98	-40.3	7.8	70.1	66.7	3.45	20.356		
1,100.0	1,098.3	1,091.8	1,091.2	2.1	1.9	162.08	-46.4	12.1	87.1	83.3	3.80	22.913		
1,200.0	1,197.4	1,188.5	1,187.4	2.3	2.1	161.21	-53.9	17.3	107.1	102.9	4.16	25.723		
1,300.0	1,296.3	1,284.2	1,282.5	2.6	2.4	160.43	-62.6	23.4	130.0	125.5	4.53	28.705		
1,400.0	1,394.9	1,378.8	1,376.4	2.9	2.6	159.74	-72.4	30.3	155.9	151.0	4.90	31.800		
1,500.0	1,493.4	1,472.5	1,469.1	3.3	2.9	159.13	-83.5	38.0	183.9	178.6	5.29	34.768		
1,600.0	1,591.9	1,565.3	1,560.8	3.6	3.1	158.45	-95.6	46.5	213.2	207.5	5.68	37.519		
1,700.0	1,690.4	1,659.4	1,653.5	3.9	3.4	157.76	-108.9	55.8	243.6	237.5	6.08	40.037		
1,800.0	1,788.9	1,754.6	1,747.2	4.2	3.7	157.21	-122.4	65.3	274.1	267.6	6.49	42.226		
1,900.0	1,887.3	1,849.8	1,841.0	4.6	4.0	156.76	-136.0	74.8	304.7	297.8	6.90	44.143		
2,000.0	1,985.8	1,945.0	1,934.7	4.9	4.3	156.40	-149.5	84.3	335.2	327.9	7.31	45.833		
2,100.0	2,084.3	2,040.2	2,028.5	5.3	4.6	156.10	-163.1	93.8	365.8	358.1	7.73	47.334		
2,200.0	2,182.8	2,135.4	2,122.2	5.6	5.0	155.84	-176.6	103.3	396.4	388.2	8.14	48.674		
2,300.0	2,281.3	2,230.6	2,216.0	5.9	5.3	155.63	-190.2	112.7	426.9	418.4	8.56	49.877		
2,400.0	2,379.7	2,325.8	2,309.7	6.3	5.6	155.44	-203.7	122.2	457.5	448.5	8.98	50.963		
2,500.0	2,478.2	2,421.0	2,403.5	6.6	5.9	155.27	-217.2	131.7	488.1	478.7	9.40	51.947		

# Anticollision Report

<b>Company:</b>	EnCana Oil & Gas (USA) Inc	<b>Local Co-ordinate Reference:</b>	Well Peppler Farms 1C-4H
<b>Project:</b>	DJ Wattenberg	<b>TVD Reference:</b>	WELL @ 5067.0ft (Ensign)
<b>Reference Site:</b>	S4-T3N-R68W (Peppler Farms)	<b>MD Reference:</b>	WELL @ 5067.0ft (Ensign)
<b>Site Error:</b>	0.0ft	<b>North Reference:</b>	True
<b>Reference Well:</b>	Peppler Farms 1C-4H	<b>Survey Calculation Method:</b>	Minimum Curvature
<b>Well Error:</b>	0.0ft	<b>Output errors are at</b>	2.00 sigma
<b>Reference Wellbore</b>	Hz	<b>Database:</b>	USA EDM 5000 Multi Users DB
<b>Reference Design:</b>	Plan #1	<b>Offset TVD Reference:</b>	Offset Datum

Offset Design S4-T3N-R68W (Peppler Farms) - Peppler Farms 1G-4H - Hz - Plan #1													Offset Site Error: 0.0 ft	
Survey Program: 0-MWD													Offset Well Error: 0.0 ft	
Reference		Offset		Semi Major Axis			Distance						Warning	
Measured Depth (ft)	Vertical Depth (ft)	Measured Depth (ft)	Vertical Depth (ft)	Reference (ft)	Offset (ft)	Highside Toolface (°)	Offset Wellbore Centre +N/-S (ft)	+E/-W (ft)	Between Centres (ft)	Between Ellipses (ft)	Total Uncertainty Axis	Separation Factor		
0.0	0.0	0.0	0.0	0.0	0.0	180.00	-40.1	0.0	40.1					
100.0	100.0	99.0	99.0	0.2	0.2	180.00	-40.1	0.0	40.1	39.8	0.30	132.613		
200.0	200.0	199.0	199.0	0.3	0.3	180.00	-40.1	0.0	40.1	39.4	0.65	61.553		
300.0	300.0	299.0	299.0	0.5	0.5	180.00	-40.1	0.0	40.1	39.1	1.00	40.069		
400.0	400.0	399.0	399.0	0.7	0.7	180.00	-40.1	0.0	40.1	38.7	1.35	29.702 CC, ES		
500.0	500.0	498.3	498.3	0.9	0.8	161.28	-40.9	0.3	41.7	40.0	1.70	24.571		
600.0	600.0	597.5	597.4	1.0	1.0	161.21	-43.3	1.2	46.6	44.6	2.04	22.790 SF		
700.0	699.9	696.3	696.2	1.2	1.2	161.12	-47.3	2.6	54.8	52.4	2.39	22.892		
800.0	799.7	794.7	794.4	1.4	1.4	161.02	-52.8	4.6	66.2	63.5	2.74	24.151		
900.0	899.4	892.4	891.8	1.6	1.6	160.93	-59.9	7.2	80.9	77.8	3.09	26.166		
1,000.0	998.9	989.4	988.4	1.8	1.8	160.84	-68.5	10.4	98.7	95.3	3.44	28.695		
1,100.0	1,098.3	1,085.4	1,083.8	2.1	2.0	160.76	-78.6	14.0	119.8	116.0	3.79	31.583		
1,200.0	1,197.4	1,180.4	1,178.0	2.3	2.3	160.68	-89.9	18.2	143.9	139.8	4.15	34.725		
1,300.0	1,296.3	1,274.2	1,270.8	2.6	2.6	160.60	-102.6	22.8	171.2	166.7	4.50	38.046		
1,400.0	1,394.9	1,366.7	1,362.1	2.9	2.8	160.52	-116.5	27.8	201.5	196.6	4.86	41.492		
1,500.0	1,493.4	1,460.2	1,454.2	3.3	3.1	160.51	-131.7	33.3	233.7	228.5	5.23	44.728		
1,600.0	1,591.9	1,554.8	1,547.4	3.6	3.4	160.49	-147.1	39.0	266.1	260.5	5.60	47.520		
1,700.0	1,690.4	1,649.5	1,640.6	3.9	3.8	160.48	-162.6	44.6	298.4	292.4	5.97	49.949		
1,800.0	1,788.9	1,744.1	1,733.8	4.2	4.1	160.47	-178.0	50.2	330.7	324.4	6.35	52.079		
1,900.0	1,887.3	1,838.7	1,827.0	4.6	4.4	160.46	-193.5	55.8	363.0	356.3	6.73	53.961		
2,000.0	1,985.8	1,933.4	1,920.2	4.9	4.7	160.45	-208.9	61.4	395.4	388.2	7.11	55.636		
2,100.0	2,084.3	2,028.0	2,013.4	5.3	5.0	160.45	-224.3	67.1	427.7	420.2	7.49	57.135		
2,200.0	2,182.8	2,122.6	2,106.6	5.6	5.3	160.44	-239.8	72.7	460.0	452.1	7.87	58.484		
2,300.0	2,281.3	2,217.2	2,199.8	5.9	5.7	160.44	-255.2	78.3	492.3	484.1	8.25	59.704		

# Anticollision Report

<b>Company:</b>	EnCana Oil & Gas (USA) Inc	<b>Local Co-ordinate Reference:</b>	Well Peppler Farms 1C-4H
<b>Project:</b>	DJ Wattenberg	<b>TVD Reference:</b>	WELL @ 5067.0ft (Ensign)
<b>Reference Site:</b>	S4-T3N-R68W (Peppler Farms)	<b>MD Reference:</b>	WELL @ 5067.0ft (Ensign)
<b>Site Error:</b>	0.0ft	<b>North Reference:</b>	True
<b>Reference Well:</b>	Peppler Farms 1C-4H	<b>Survey Calculation Method:</b>	Minimum Curvature
<b>Well Error:</b>	0.0ft	<b>Output errors are at</b>	2.00 sigma
<b>Reference Wellbore</b>	Hz	<b>Database:</b>	USA EDM 5000 Multi Users DB
<b>Reference Design:</b>	Plan #1	<b>Offset TVD Reference:</b>	Offset Datum

Offset Design S4-T3N-R68W (Peppler Farms) - Peppler Farms 1H-4H - Hz - Plan #1													Offset Site Error: 0.0 ft	
Survey Program: 0-MWD													Offset Well Error: 0.0 ft	
Reference		Offset		Semi Major Axis			Distance							Warning
Measured Depth (ft)	Vertical Depth (ft)	Measured Depth (ft)	Vertical Depth (ft)	Reference (ft)	Offset (ft)	Highside Toolface (°)	Offset Wellbore Centre +N/-S (ft)	+E/-W (ft)	Between Centres (ft)	Between Ellipses (ft)	Total Uncertainty Axis	Separation Factor		
0.0	0.0	0.0	0.0	0.0	0.0	180.00	-51.0	0.0	51.0					
100.0	100.0	99.0	99.0	0.2	0.2	180.00	-51.0	0.0	51.0	50.7	0.30	168.780		
200.0	200.0	199.0	199.0	0.3	0.3	180.00	-51.0	0.0	51.0	50.3	0.65	78.340	CC, ES	
300.0	300.0	298.2	298.1	0.5	0.5	179.74	-51.8	0.2	51.8	50.8	1.00	51.888		
400.0	400.0	397.2	397.2	0.7	0.7	179.01	-54.3	0.9	54.3	53.0	1.35	40.339		
500.0	500.0	496.2	496.0	0.9	0.9	159.50	-58.4	2.1	59.3	57.6	1.69	34.991		
600.0	600.0	594.8	594.4	1.0	1.1	158.99	-64.1	3.8	67.6	65.5	2.04	33.094	SF	
700.0	699.9	692.9	692.3	1.2	1.3	158.74	-71.4	5.9	79.1	76.8	2.39	33.122		
800.0	799.7	790.3	789.3	1.4	1.5	158.68	-80.2	8.4	94.0	91.2	2.74	34.331		
900.0	899.4	887.0	885.3	1.6	1.7	158.74	-90.5	11.4	112.0	108.9	3.09	36.308		
1,000.0	998.9	982.7	980.3	1.8	2.0	158.85	-102.3	14.8	133.3	129.8	3.43	38.807		
1,100.0	1,098.3	1,077.4	1,073.9	2.1	2.3	158.98	-115.4	18.6	157.7	153.9	3.78	41.672		
1,200.0	1,197.4	1,170.8	1,166.2	2.3	2.6	159.11	-129.8	22.8	185.2	181.1	4.13	44.796		
1,300.0	1,296.3	1,262.9	1,256.8	2.6	2.9	159.23	-145.4	27.3	215.8	211.3	4.49	48.105		
1,400.0	1,394.9	1,355.8	1,348.0	2.9	3.2	159.36	-162.4	32.1	249.1	244.3	4.84	51.460		
1,500.0	1,493.4	1,449.7	1,440.2	3.3	3.5	159.62	-179.6	37.1	283.4	278.1	5.21	54.396		
1,600.0	1,591.9	1,543.7	1,532.4	3.6	3.9	159.82	-196.8	42.1	317.6	312.0	5.58	56.929		
1,700.0	1,690.4	1,637.6	1,624.7	3.9	4.2	159.98	-214.0	47.1	351.8	345.9	5.95	59.136		
1,800.0	1,788.9	1,731.6	1,716.9	4.2	4.6	160.11	-231.3	52.0	386.1	379.8	6.32	61.074		
1,900.0	1,887.3	1,825.5	1,809.1	4.6	4.9	160.22	-248.5	57.0	420.3	413.6	6.69	62.789		
2,000.0	1,985.8	1,919.5	1,901.3	4.9	5.3	160.31	-265.7	62.0	454.6	447.5	7.07	64.316		
2,100.0	2,084.3	2,013.4	1,993.6	5.3	5.6	160.39	-282.9	66.9	488.8	481.4	7.44	65.685		

## Anticollision Report

<b>Company:</b>	EnCana Oil & Gas (USA) Inc	<b>Local Co-ordinate Reference:</b>	Well Peppler Farms 1C-4H
<b>Project:</b>	DJ Wattenberg	<b>TVD Reference:</b>	WELL @ 5067.0ft (Ensign)
<b>Reference Site:</b>	S4-T3N-R68W (Peppler Farms)	<b>MD Reference:</b>	WELL @ 5067.0ft (Ensign)
<b>Site Error:</b>	0.0ft	<b>North Reference:</b>	True
<b>Reference Well:</b>	Peppler Farms 1C-4H	<b>Survey Calculation Method:</b>	Minimum Curvature
<b>Well Error:</b>	0.0ft	<b>Output errors are at</b>	2.00 sigma
<b>Reference Wellbore</b>	Hz	<b>Database:</b>	USA EDM 5000 Multi Users DB
<b>Reference Design:</b>	Plan #1	<b>Offset TVD Reference:</b>	Offset Datum

<b>Offset Design</b> S4-T3N-R68W (Peppler Farms) - PEPLER FARMS 4-2-4 (EXISTING) - Existing - Existing												<b>Offset Site Error:</b>	0.0 ft
Survey Program: 137-MWD												<b>Offset Well Error:</b>	0.0 ft
Reference		Offset		Semi Major Axis			Distance						
Measured Depth (ft)	Vertical Depth (ft)	Measured Depth (ft)	Vertical Depth (ft)	Reference (ft)	Offset (ft)	Highside Toolface (°)	Offset Wellbore Centre +N/-S (ft)	+E/-W (ft)	Between Centres (ft)	Between Ellipses (ft)	Total Uncertainty Axis	Separation Factor	Warning
9,400.0	7,119.0	7,275.0	7,111.0	61.2	24.6	-89.05	182.1	-2,345.9	482.8	408.5	74.28	6.500	
9,438.2	7,119.0	7,275.3	7,111.4	62.1	24.6	-89.10	182.1	-2,346.0	481.3	406.1	75.21	6.400 CC, ES	
9,500.0	7,119.0	7,275.9	7,112.0	63.6	24.6	-89.17	182.1	-2,346.0	485.3	408.5	76.71	6.326 SF	

## Anticollision Report

<b>Company:</b>	EnCana Oil & Gas (USA) Inc	<b>Local Co-ordinate Reference:</b>	Well Peppler Farms 1C-4H
<b>Project:</b>	DJ Wattenberg	<b>TVD Reference:</b>	WELL @ 5067.0ft (Ensign)
<b>Reference Site:</b>	S4-T3N-R68W (Peppler Farms)	<b>MD Reference:</b>	WELL @ 5067.0ft (Ensign)
<b>Site Error:</b>	0.0ft	<b>North Reference:</b>	True
<b>Reference Well:</b>	Peppler Farms 1C-4H	<b>Survey Calculation Method:</b>	Minimum Curvature
<b>Well Error:</b>	0.0ft	<b>Output errors are at</b>	2.00 sigma
<b>Reference Wellbore</b>	Hz	<b>Database:</b>	USA EDM 5000 Multi Users DB
<b>Reference Design:</b>	Plan #1	<b>Offset TVD Reference:</b>	Offset Datum

Reference Depths are relative to WELL @ 5067.0ft (Ensign)

Offset Depths are relative to Offset Datum

Central Meridian is -105.500000 °

Coordinates are relative to: Peppler Farms 1C-4H

Coordinate System is US State Plane 1983, Colorado Northern Zone

Grid Convergence at Surface is: 0.32°

