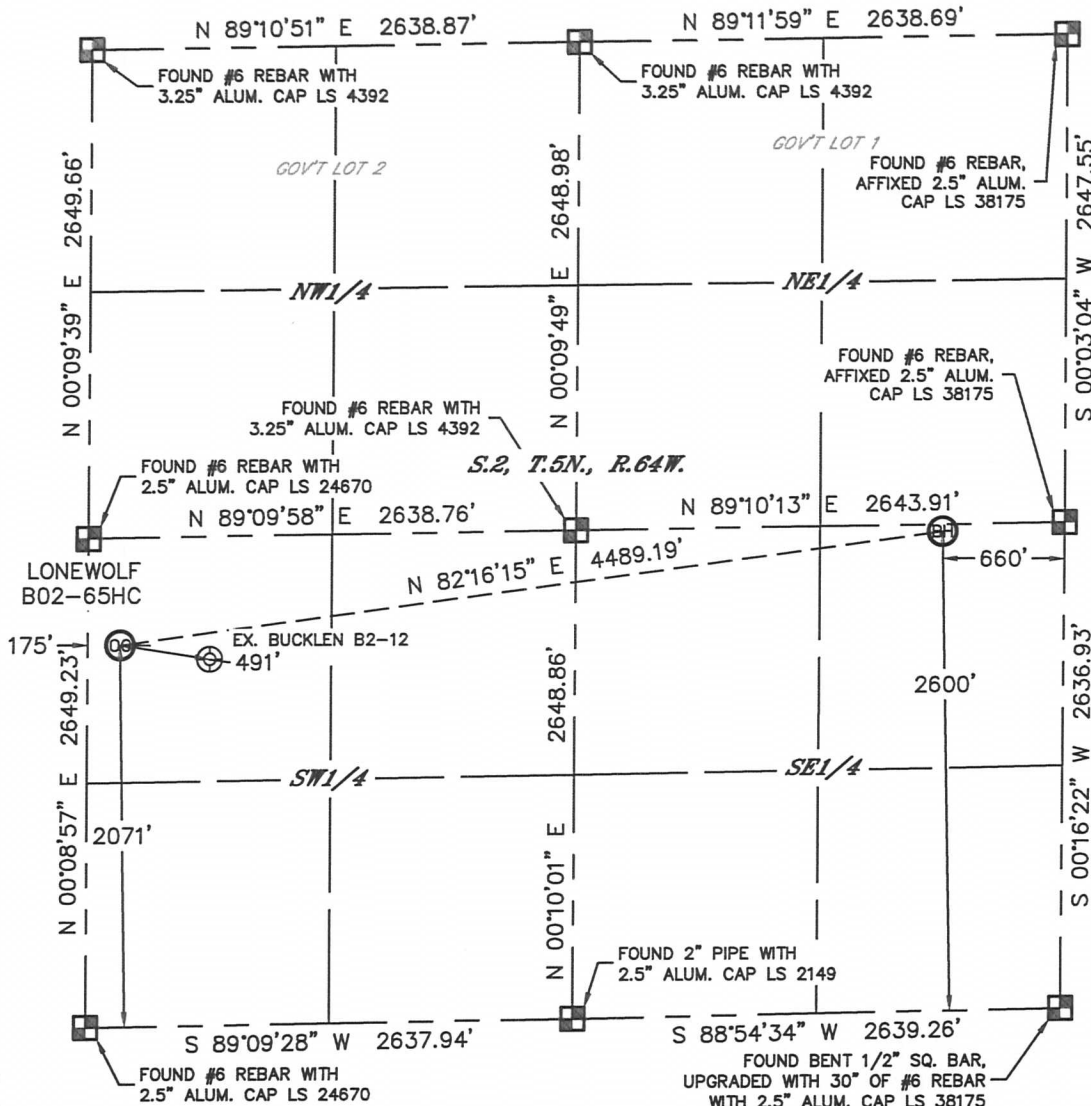


Lat40°, Inc. 1635 Foxtrail Drive, Suite 325 Loveland, CO 970-776-3321

WELL LOCATION CERTIFICATE

THIS MAP DOES NOT REPRESENT A BOUNDARY SURVEY

SECTION: 2
TOWNSHIP: 5N
RANGE: 64W



In accordance with a request from Mike Rodine with Noble Energy Inc., Lat40°, Inc. has determined the surface location of the LONEWOLF B02-65HC to be 2071' from the SOUTH line and 175' from the WEST line and the bottom hole to be 2600' from the SOUTH line and 660' from the EAST line as measured at right angles from the section lines of Section 2, Township 5 North, Range 64 West of the Sixth Principal Meridian, County of Weld, State of Colorado.

I hereby state that this Well Location Certificate was prepared by me, or under my direct supervision, that the fieldwork was completed on 11/28/2012, for and on behalf of Noble Energy Inc. That this is not a Land Survey Plat or an Improvement Survey Plat, and that it is not to be relied upon for establishment of fence, building, or other future improvement lines.

NOTE:

- 1) Bearings shown are Grid Bearings of the Colorado State Plane Coordinate System, North Zone, North American Datum 1983/2007. The lineal dimensions as contained herein are based upon the "U.S. Survey Foot."
- 2) Ground elevations are based on an observed GPS elevation (NAVD 1988 DATUM).
- 3) NEAREST EXISTING WELL: BUCKLEN B2-12, 491'
- 4) IMPROVEMENTS: See LOCATION DRAWING for all visible improvements within 400' of disturbed area.
- 5) SURFACE USE: CROP LAND
- 6) INSTRUMENT OPERATOR: ADAM KELLY

SURFACE LOCATION

LAT: 40.42676°N
LONG: 104.52630°W
PDOP: 2.4
ELEV: 4625'
1/4, 1/4: NW1/4SW1/4
NEAREST PROPERTY LINE: 175' WEST

BOTTOM HOLE

LAT: 40.42828°N
LONG: 104.51031°W

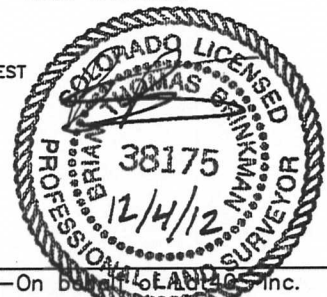
NOTE

According to Colorado law, you must commence any legal action based upon any defect in this W.L.C. within three years after you discover such defect. In no event, may any action based upon any defect in this survey be commenced more than ten years after the date of the certificate shown hereon. (13-80-105 C.R.S.)

LEGEND

- = ALIQUOT MONUMENT AS DESCRIBED
- = CALCULATED POSITION

Brian T. Brinkman—On behalf of Lat40°, Inc.
Colorado Licensed Professional Land Surveyor No. 38175
DATE: 12/4/2012
PROJECT#: 2012029

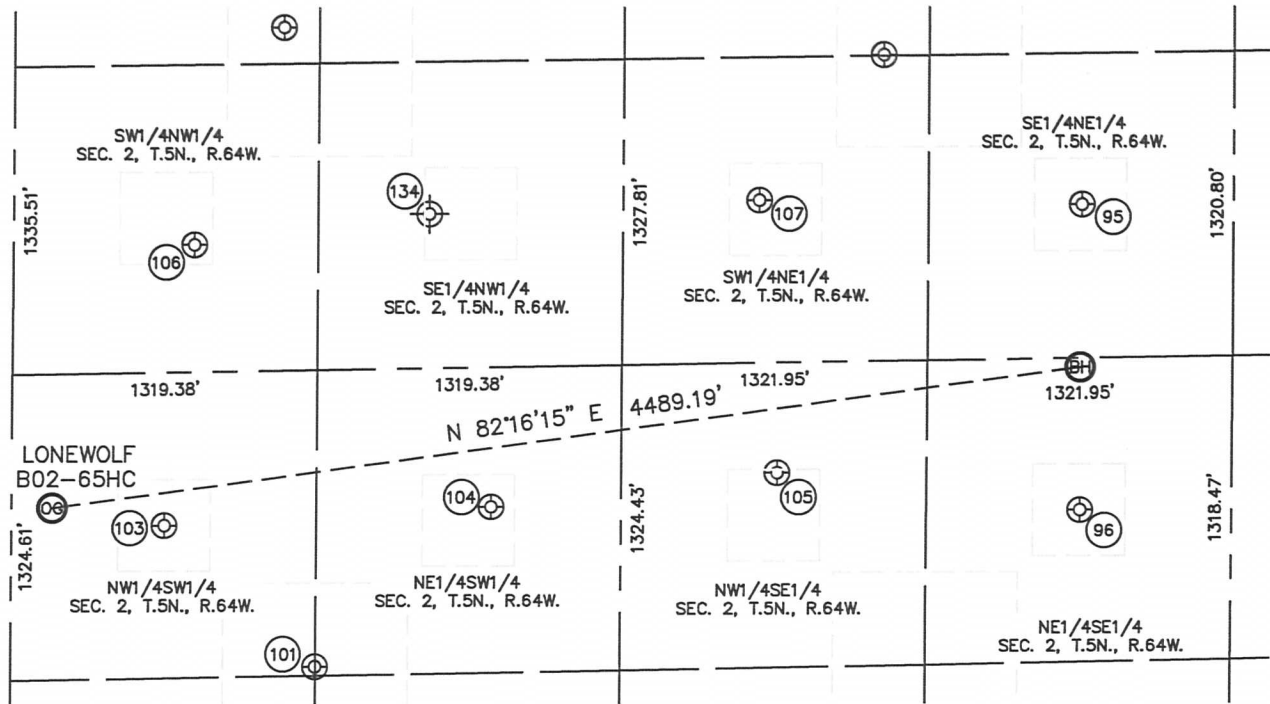


Lat40°, Inc. 1635 Foxtrail Drive, Suite 325 Loveland, CO 970-776-3321

SITE SKETCH

LONEWOLF B02-65HC

SECTION: 2
TOWNSHIP: 5N
RANGE: 64W



95
MEYER B2-8
SE1/4NE1/4
1983' FNL
656' FEL
LAT-40.43021°N
LONG-104.51026°W
PDOP: 2.3
ELEV: 4607'

96
MEYER B2-9
NE1/4SE1/4
1981' FSL
656' FEL
LAT-40.42658°N
LONG-104.51033°W
PDOP: 1.6
ELEV: 4603'

101
BUCKMUR B2-25
NW1/4SW1/4
1363' FSL
1317' FWL
LAT-40.42483°N
LONG-104.52224°W
PDOP: 2.5
ELEV: 4620'

103
BUCKLEN B2-12
NW1/4SW1/4
1987' FSL
660' FWL
LAT-40.42654°N
LONG-104.52457°W
PDOP: 1.6
ELEV: 4625'

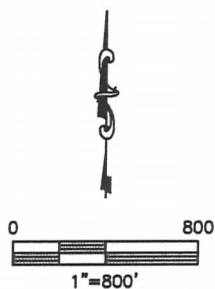
104
PHERSON 2-2
NE1/4SW1/4
2045' FSL
2075' FWL
LAT-40.42671°N
LONG-104.51948°W
PDOP: 1.3
ELEV: 4626'

105
TREBOR B2-10
NW1/4SE1/4
2169' FSL
1968' FEL
LAT-40.42707°N
LONG-104.51503°W
PDOP: 1.9
ELEV: 4612'

106
BAKER B2-5
SW1/4NW1/4
2097' FNL
781' FWL
LAT-40.42987°N
LONG-104.52407°W
PDOP: 1.9
ELEV: 4639'

107
FOE B2-7
SW1/4NE1/4
1942' FNL
2053' FEL
LAT-40.43031°N
LONG-104.51528°W
PDOP: 1.9
ELEV: 4611'

134
FRITZLER B2-6
(Plugged & Abandoned)
SE1/4NW1/4
1980' FNL (COGCC)
1800' FWL (COGCC)
LAT-40.430175°N (COGCC)
LONG-104.520544°W (COGCC)
PDOP: N/A
ELEV: 4617' (COGCC)



DATE: 12/4/2012
PROJECT#: 2012029