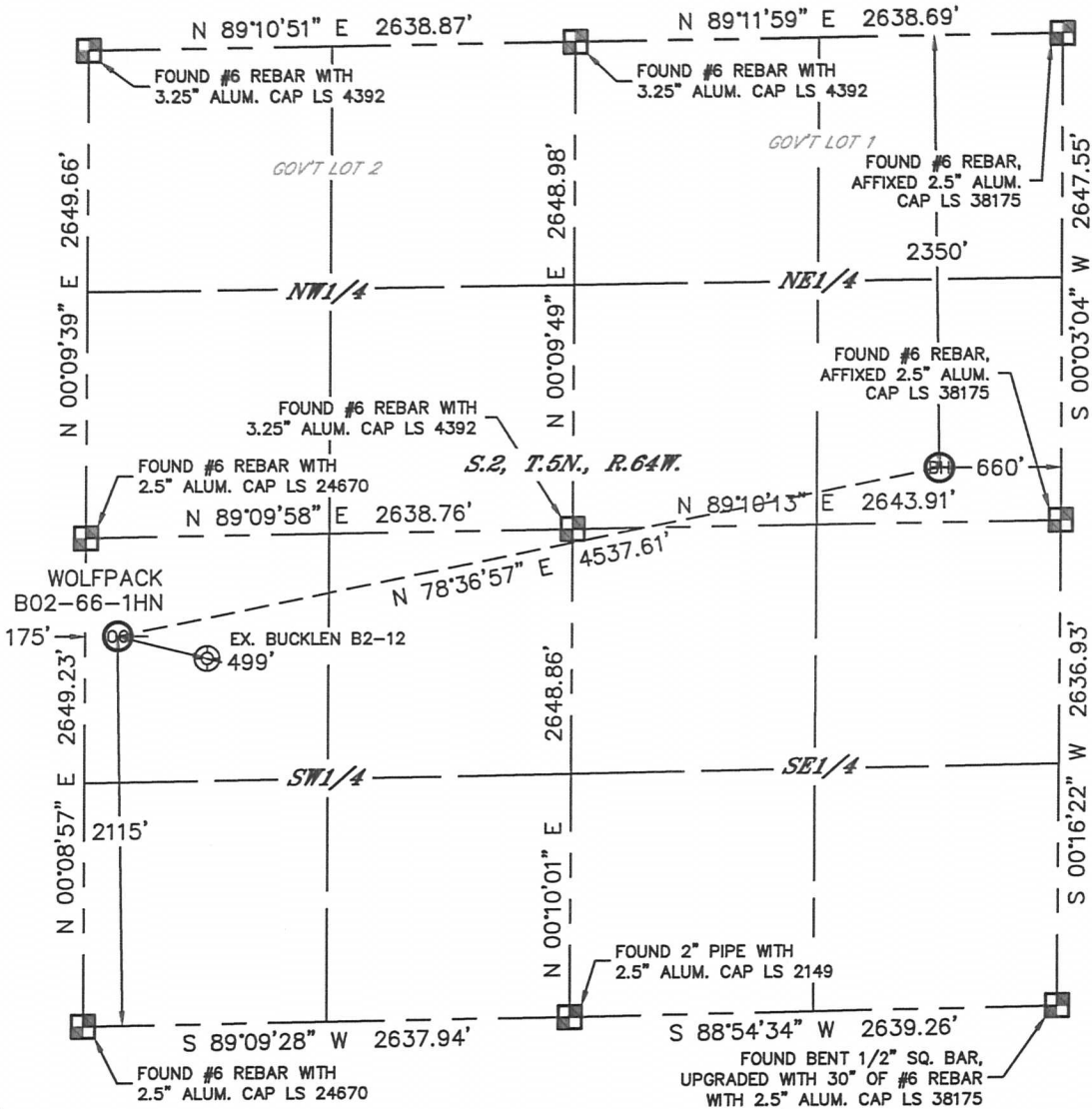


# WELL LOCATION CERTIFICATE

THIS MAP DOES NOT REPRESENT A BOUNDARY SURVEY

SECTION: 2  
TOWNSHIP: 5N  
RANGE: 64W



In accordance with a request from Mike Rodine with Noble Energy Inc. Lat40°, Inc. has determined the surface location of the WOLFPACK B02-66-1HN to be 2115' from the SOUTH line and 175' from the WEST line and the bottom hole to be 2350' from the NORTH line and 660' from the EAST line as measured at right angles from the section lines of Section 2, Township 5 North, Range 64 West of the Sixth Principal Meridian, County of Weld, State of Colorado.

I hereby state that this Well Location Certificate was prepared by me, or under my direct supervision, that the fieldwork was completed on 11/28/2012, for and on behalf of Noble Energy Inc. That this is not a Land Survey Plat or an Improvement Survey Plat, and that it is not to be relied upon for establishment of fence, building, or other future improvement lines.

## NOTE:

- 1) Bearings shown are Grid Bearings of the Colorado State Plane Coordinate System, North Zone, North American Datum 1983/2007. The lineal dimensions as contained herein are based upon the "U.S. Survey Foot."
- 2) Ground elevations are based on an observed GPS elevation (NAVD 1988 DATUM).
- 3) NEAREST EXISTING WELL: BUCKLEN B2-12, 499'
- 4) IMPROVEMENTS: See LOCATION DRAWING for all visible improvements within 400' of disturbed area.
- 5) SURFACE USE: CROP LAND
- 6) INSTRUMENT OPERATOR: ADAM KELLY

## SURFACE LOCATION

LAT: 40.42688°N  
LONG: 104.52630°W  
PDOP: 1.3  
ELEV: 4625'  
1/4, 1/4: NW1/4SW1/4  
NEAREST PROPERTY LINE: 175' WEST

## BOTTOM HOLE

LAT: 40.42921°N  
LONG: 104.51029°W

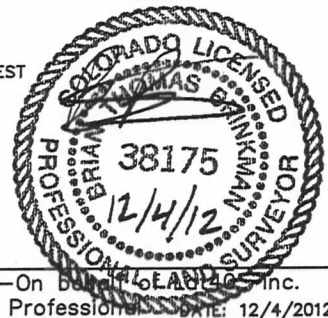
## LEGEND

- = ALIQUOT MONUMENT AS DESCRIBED
- = CALCULATED POSITION

## NOTE

According to Colorado law, you must commence any legal action based upon any defect in this W.L.C. within three years after you discover such defect. In no event, may any action based upon any defect in this survey be commenced more than ten years after the date of the certificate shown hereon. (13-80-105 C.R.S.)

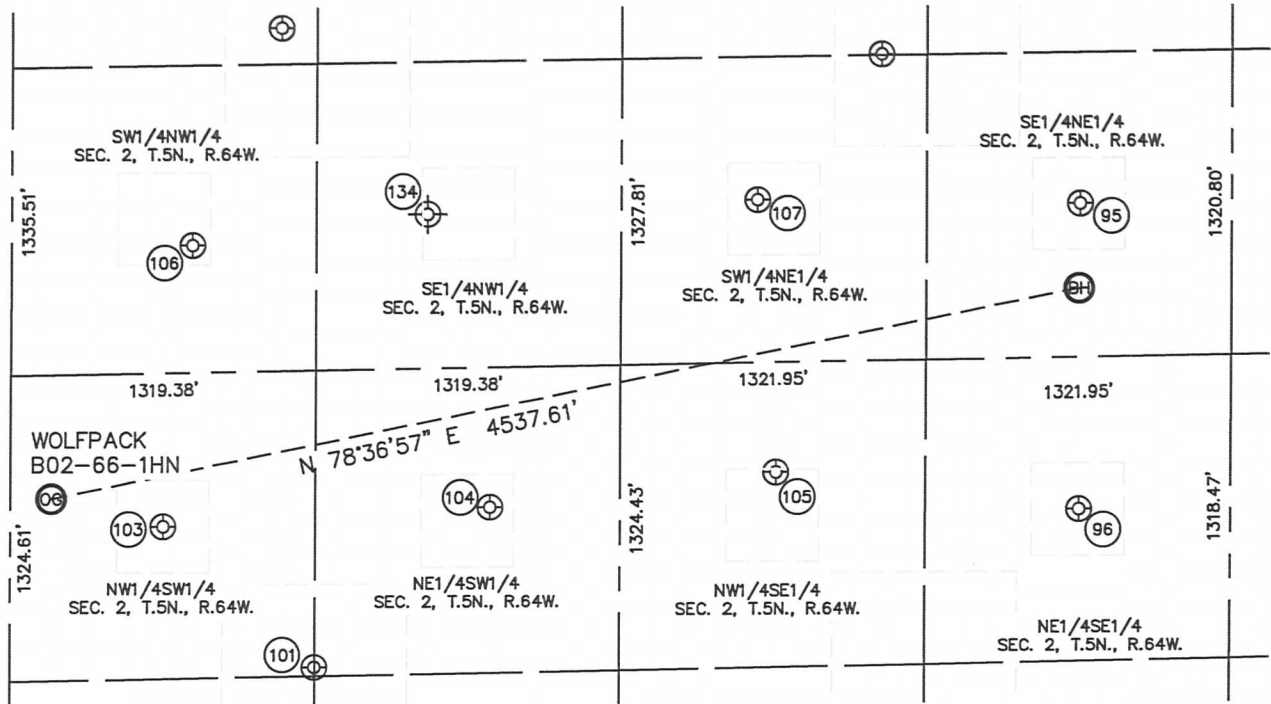
Brian T. Brinkman-On behalf of Lat40°, Inc.  
Colorado Licensed Professional Land Surveyor No. 38175  
DATE: 12/4/2012  
PROJECT#: 2012029



# SITE SKETCH

## WOLFPACK B02-66-1HN

SECTION: 2  
TOWNSHIP: 5N  
RANGE: 64W



(95)  
MEYER B2-8  
SE1/4NE1/4  
1983' FSL  
656' FEL  
LAT-40.43021N  
LONG-104.51026W  
PDOP: 2.3  
ELEV: 4607'

(96)  
MEYER B2-9  
NE1/4SE1/4  
1981' FSL  
656' FEL  
LAT-40.42658N  
LONG-104.51033W  
PDOP: 1.6  
ELEV: 4603'

(101)  
BUCKMUR B2-25  
NW1/4SW1/4  
1363' FSL  
1317' FWL  
LAT-40.42483N  
LONG-104.52224W  
PDOP: 2.5  
ELEV: 4620'

(103)  
BUCKLEN B2-12  
NW1/4SW1/4  
1987' FSL  
660' FWL  
LAT-40.42654N  
LONG-104.52457W  
PDOP: 1.6  
ELEV: 4625'

(104)  
PHERSON 2-2  
NE1/4SW1/4  
2045' FSL  
2075' FWL  
LAT-40.42671N  
LONG-104.51948W  
PDOP: 1.3  
ELEV: 4626'

(105)  
TREBOR B2-10  
NW1/4SE1/4  
2169' FSL  
1968' FEL  
LAT-40.42707N  
LONG-104.51503W  
PDOP: 1.9  
ELEV: 4612'

(106)  
BAKER B2-5  
SW1/4NW1/4  
2097' FSL  
781' FWL  
LAT-40.42987N  
LONG-104.52407W  
PDOP: 1.9  
ELEV: 4639'

(107)  
FOE B2-7  
SW1/4NE1/4  
1942' FSL  
2053' FEL  
LAT-40.43031N  
LONG-104.51528W  
PDOP: 1.9  
ELEV: 4611'

(134)  
FRITZLER B2-6  
(Plugged & Abandoned)  
SE1/4NW1/4  
1980' FSL (COGCC)  
1800' FWL (COGCC)  
LAT-40.430175N (COGCC)  
LONG-104.520544W (COGCC)  
PDOP: N/A  
ELEV: 4617' (COGCC)

