

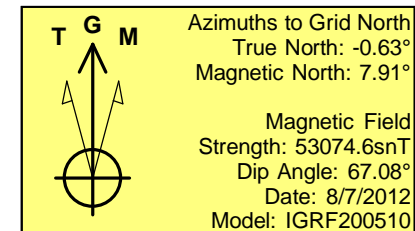
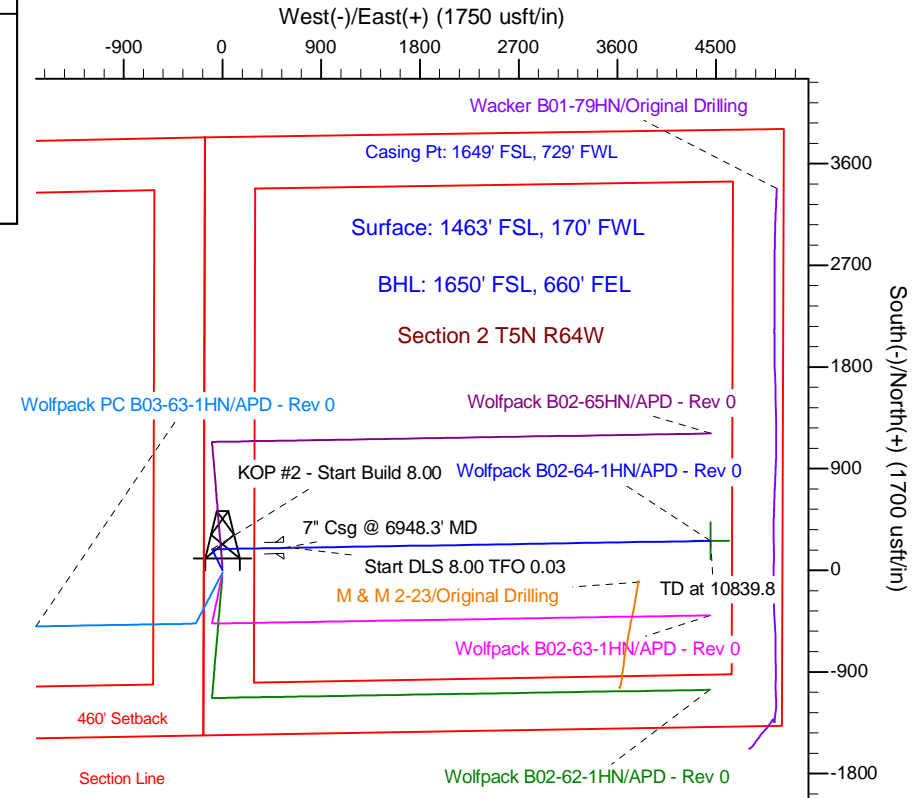
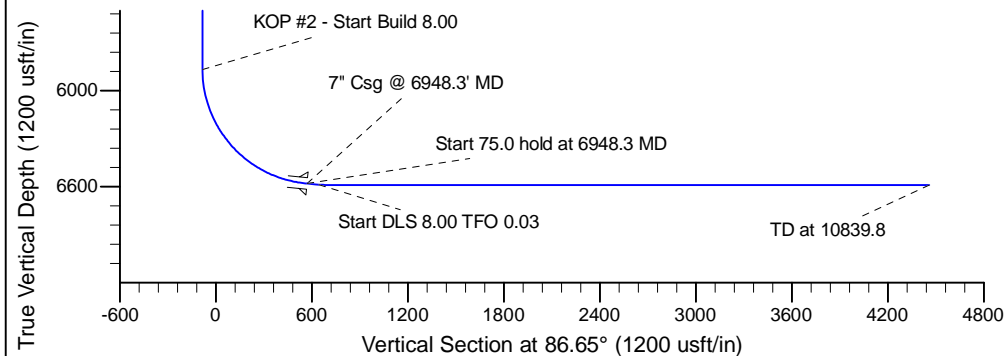
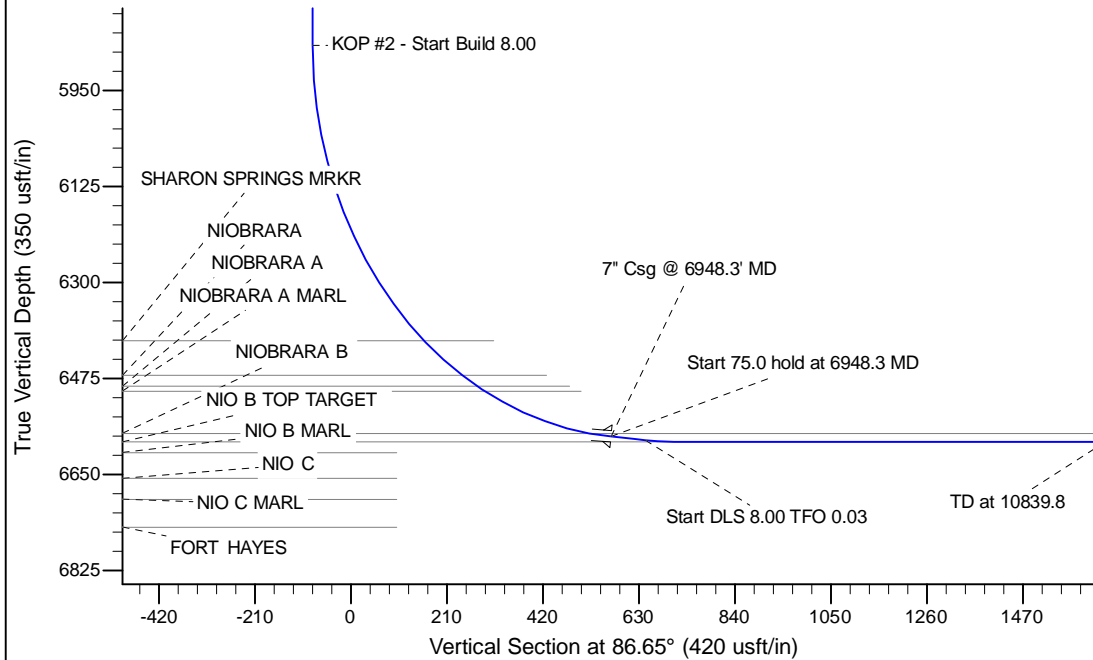
Project: Wattenberg Field
Site: B (Sec.2-T05N-R64W) Weld County, CO
Well: Wolfpack B02-64-1HN
Wellbore: Original Drilling
Design: APD - Rev 0

Northern Region Drilling

Geodetic System: US State Plane 1983
Datum: North American Datum 1983
Ellipsoid: GRS 1980
Zone: Colorado Northern Zone
System Datum: Mean Sea Level

SECTION DETAILS

Sec	MD	Inc	Azi	TVD	+N/-S	+E/-W	Dleg	TFace	VFace	Target
1	0.0	0.00	0.00	0.0	0.0	0.0	0.00	0.00	0.0	
2	2000.0	0.00	0.00	2000.0	0.0	0.0	0.00	0.00	0.0	
3	2480.5	12.01	333.07	2477.0	44.7	-22.7	2.50	333.07	-20.1	
4	3006.0	12.01	333.07	2991.0	142.3	-72.3	0.00	0.00	-63.8	
5	3486.5	0.00	0.00	3468.0	187.0	-95.0	2.50	180.00	-83.9	
6	5885.8	0.00	0.00	5867.3	187.0	-95.0	0.00	0.00	-83.9	
7	6948.3	85.00	89.07	6580.7	197.6	558.7	8.00	89.07	569.3	
8	7023.3	85.00	89.07	6587.3	198.8	633.4	0.00	0.00	643.9	
9	7085.8	90.00	89.07	6590.0	199.8	695.8	8.00	0.03	706.3	
10	10839.8	90.00	89.07	6590.0	260.6	4449.3	0.00	0.00	4456.9	Wolfpack B02-64-1HN BHL 1650'FSL, 660'FEL



WELL DETAILS: Wolfpack B02-64-1HN			
Ground Level:	4616.0	Latitude	40.425090
Northing	1399188.78	Easting	3271065.80
		Longitude	-104.526350
Plan: APD - Rev 0 (Wolfpack B02-64-1HN/Original Drilling)			
Created By: Carrie Willers	Date: 14:44, August 15 2012		
Checked: _____	Date: _____		
Reviewed: _____	Date: _____		
Approved: _____	Date: _____		