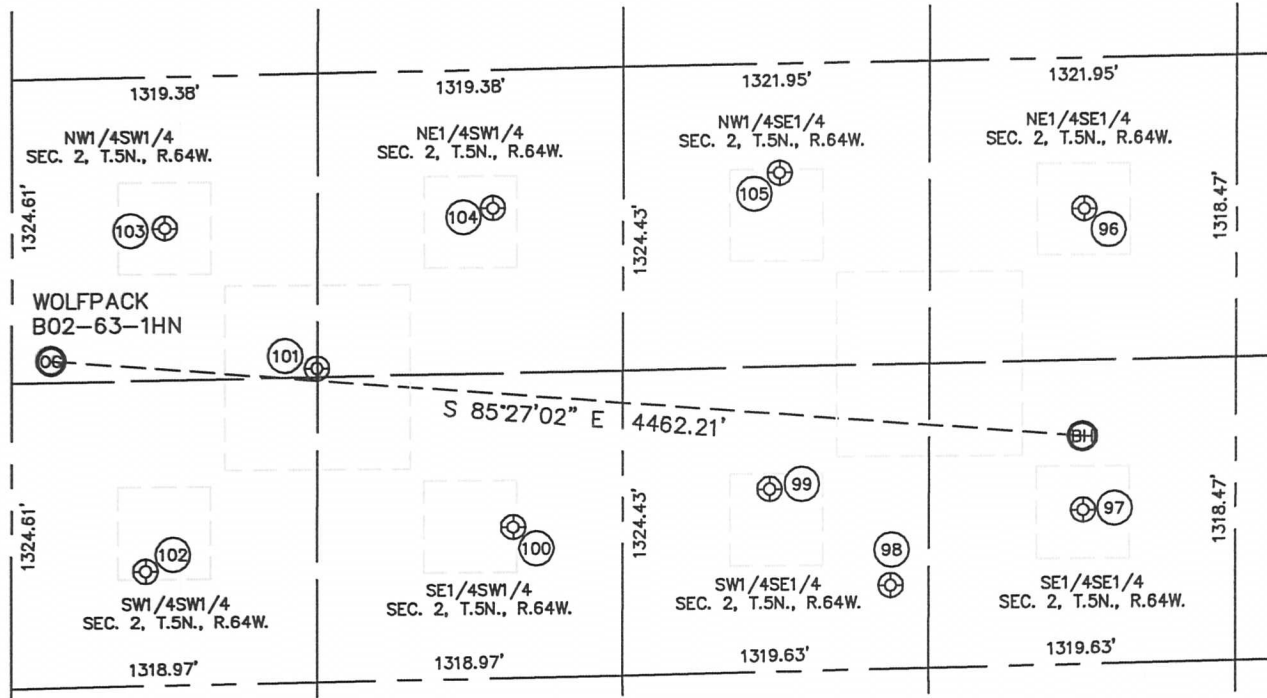


SITE SKETCH

WOLFPACK B02-63-1HN

SECTION: 2
TOWNSHIP: 5N
RANGE: 64W



96
MEYER B2-9
NE1/4SE1/4
1981' FSL
656' FEL
LAT-40.42658°N
LONG-104.51033°W
PDOP: 1.6
ELEV: 4603'

97
MEYER B2-16
SE1/4SE1/4
671' FSL
656' FEL
LAT-40.42299°N
LONG-104.51040°W
PDOP: 3.4
ELEV: 4603'

98
M & M 2-23
SW1/4SE1/4
364' FSL
1484' FEL
LAT-40.42213°N
LONG-104.51339°W
PDOP: 1.6
ELEV: 4598'

99
TREBOR B2-15
SW1/4SE1/4
795' FSL
2006' FEL
LAT-40.42330°N
LONG-104.51525°W
PDOP: 2.2
ELEV: 4610'

100
BUCKMUR B2-14
SE1/4SW1/4
657' FSL
2165' FWL
LAT-40.42290°N
LONG-104.51923°W
PDOP: 1.7
ELEV: 4616'

101
BUCKMUR B2-25
NW1/4SW1/4
1363' FSL
1317' FWL
LAT-40.42483°N
LONG-104.52224°W
PDOP: 2.5
ELEV: 4620'

102
BUCKLEN 1-2
SW1/4SW1/4
499' FSL
580' FWL
LAT-40.42245°N
LONG-104.52493°W
PDOP: 1.5
ELEV: 4611'

103
BUCKLEN B2-12
NW1/4SW1/4
1987' FSL
660' FWL
LAT-40.42654°N
LONG-104.52457°W
PDOP: 1.6
ELEV: 4625'

104
PHERSON 2-2
NE1/4SW1/4
2045' FSL
2075' FWL
LAT-40.42671°N
LONG-104.51948°W
PDOP: 1.3
ELEV: 4626'

105
TREBOR B2-10
NW1/4SE1/4
2169' FSL
1968' FEL
LAT-40.42707°N
LONG-104.51503°W
PDOP: 1.9
ELEV: 4612'

