

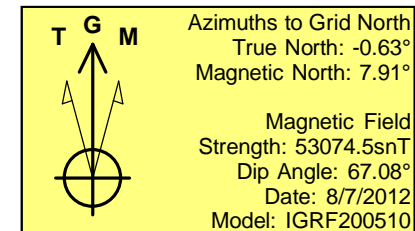
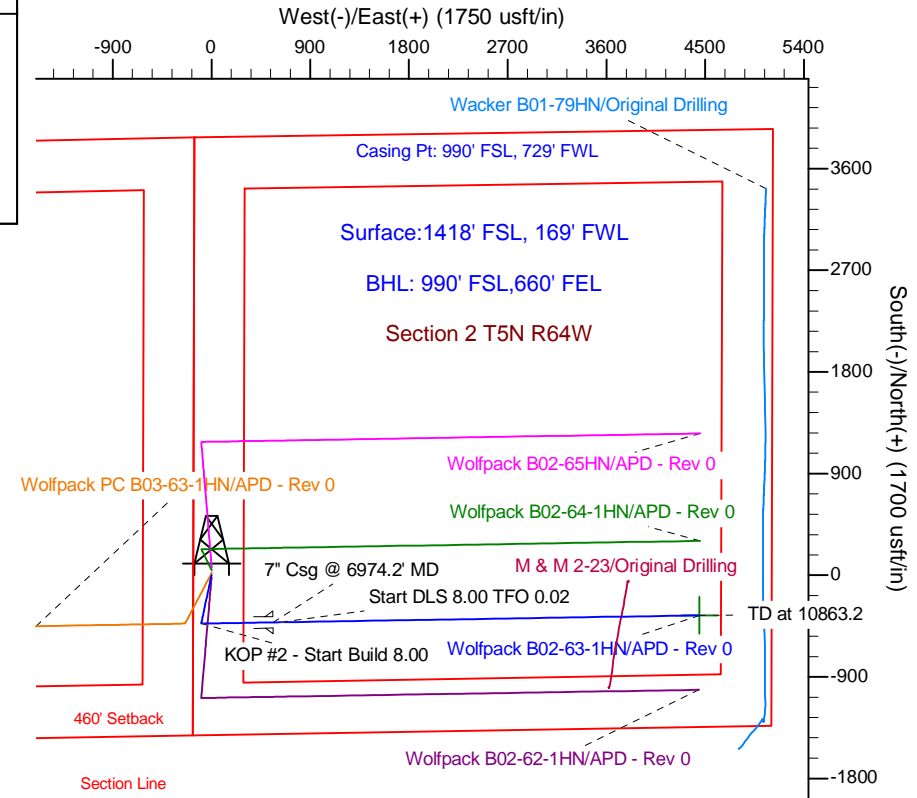
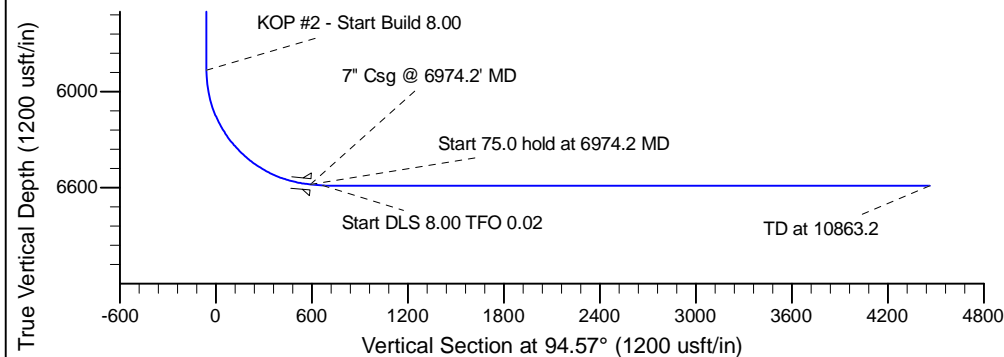
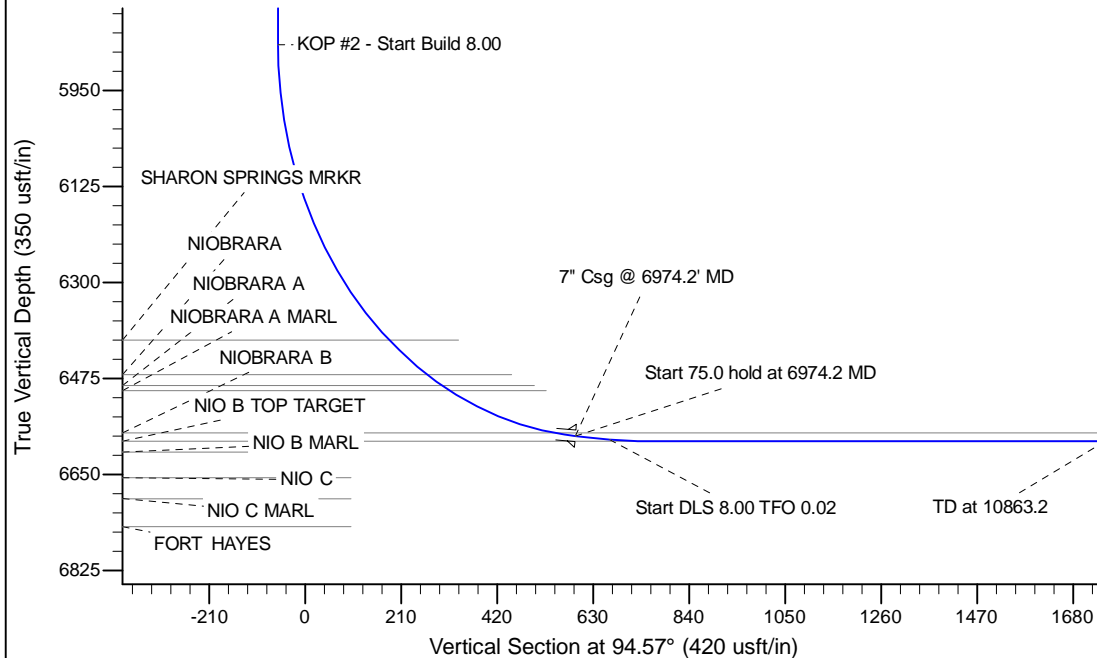
Project: Wattenberg Field
 Site: B (Sec.2-T05N-R64W) Weld County, CO
 Well: Wolfpack B02-63-1HN
 Wellbore: Original Drilling
 Design: APD - Rev 0

Northern Region Drilling

Geodetic System: US State Plane 1983
 Datum: North American Datum 1983
 Ellipsoid: GRS 1980
 Zone: Colorado Northern Zone
 System Datum: Mean Sea Level

SECTION DETAILS

Sec	MD	Inc	Azi	TVD	+N/-S	+E/-W	Dleg	TFace	VSect	Target
1	0.0	0.00	0.00	0.0	0.0	0.0	0.00	0.00	0.0	
2	1500.0	0.00	0.00	1500.0	0.0	0.0	0.00	0.00	0.0	
3	2020.1	13.00	192.39	2015.7	-57.4	-12.6	2.50	192.39	-8.0	
4	3445.3	13.00	192.39	3404.3	-370.6	-81.4	0.00	0.00	-51.6	
5	3965.4	0.00	0.00	3920.0	-428.0	-94.0	2.50	180.00	-59.6	
6	5911.7	0.00	0.00	5866.3	-428.0	-94.0	0.00	0.00	-59.6	
7	6974.2	85.00	89.08	6579.7	-417.5	559.7	8.00	89.08	591.1	
8	7049.2	85.00	89.08	6586.3	-416.3	634.4	0.00	0.00	665.5	
9	7111.7	90.00	89.08	6589.0	-415.3	696.8	8.00	0.02	727.7	
10	10863.2	90.00	89.08	6589.0	-355.2	4447.8	0.00	0.00	4462.0	Wolfpack B02-63-1HN BHL 990'FSL, 660'FEL



WELL DETAILS: Wolfpack B02-63-1HN			
Ground Level:	4615.0	Latitude	40.424970
Northing	1399145.04	Easting	3271063.50
Longitude	-104.526360		
Plan: APD - Rev 0 (Wolfpack B02-63-1HN/Original Drilling)			
Created By: Carrie Willers	Date: 14:03, August 15 2012		
Checked: _____	Date: _____		
Reviewed: _____	Date: _____		
Approved: _____	Date: _____		