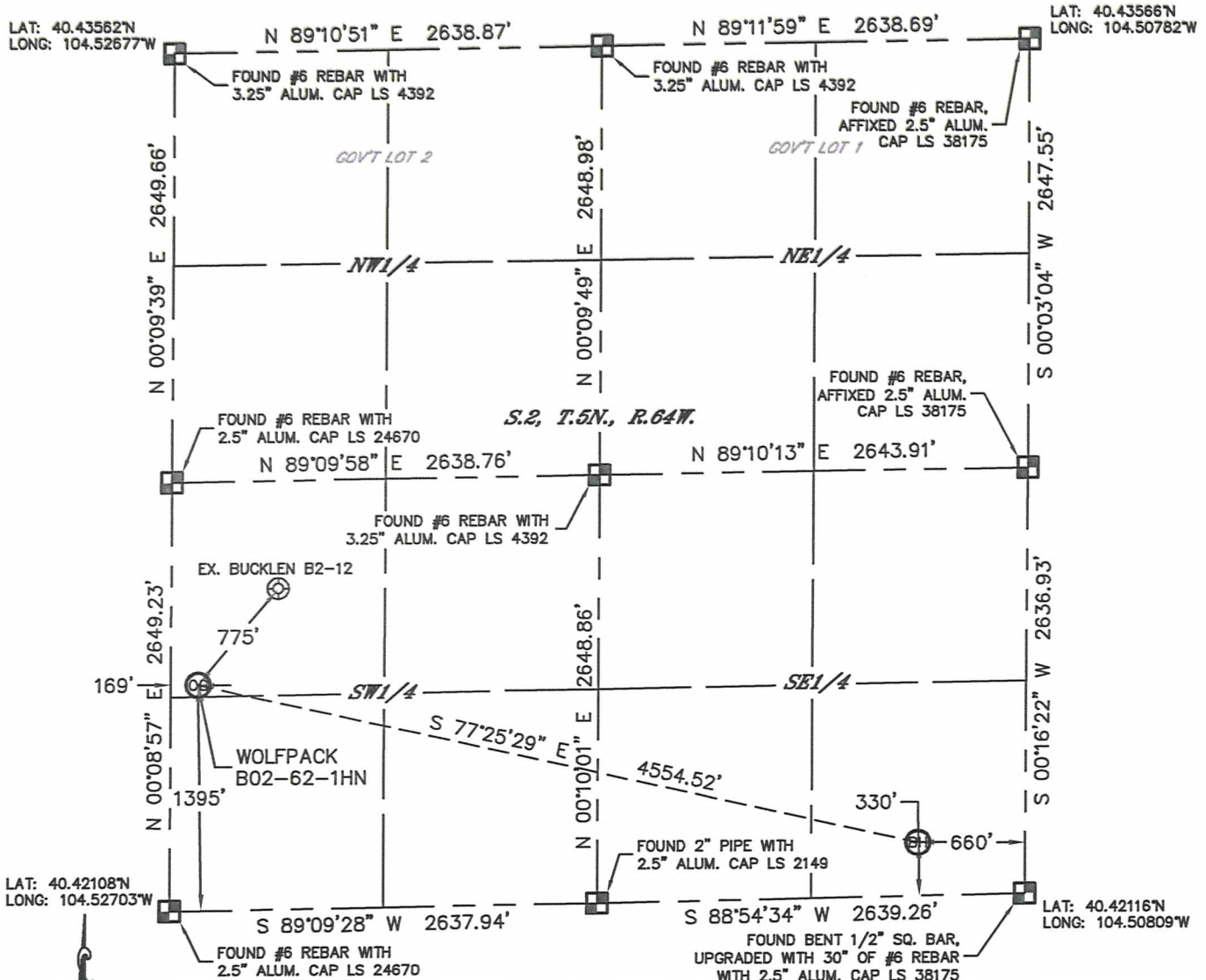


Lat40°, Inc. 1635 Foxtrail Drive, Suite 325 Loveland, CO 970-776-3321

WELL LOCATION CERTIFICATE

THIS MAP DOES NOT REPRESENT A BOUNDARY SURVEY

SECTION: 2
TOWNSHIP: 5N
RANGE: 64W



In accordance with a request from Mike Rodine with Noble Energy Inc. Lat40°, Inc. has determined the surface location of the WOLFPACK B02-62-1HN to be 1395' from the SOUTH line and 169' from the WEST line and the bottom hole to be 330' from the SOUTH line and 660' from the EAST line as measured at right angles from the section lines of Section 2, Township 5 North, Range 64 West of the Sixth Principal Meridian, County of Weld, State of Colorado.

I hereby state that this Well Location Certificate was prepared by me, or under my direct supervision, that the fieldwork was completed on 2/29/12, for and on behalf of Noble Energy Inc. That this is not a Land Survey Plat or an Improvement Survey Plat, and that it is not to be relied upon for establishment of fence, building, or other future improvement lines.

NOTE:

- 1) Bearings shown are Grid Bearings of the Colorado State Plane Coordinate System, North Zone, North American Datum 1983/2007. The lined dimensions as contained herein are based upon the "U.S. Survey Foot."
- 2) Ground elevations are based on an observed GPS elevation (NAVD 1988 DATUM).
- 3) NEAREST EXISTING WELL: BUCKLEN B2-12, 775'
- 4) IMPROVEMENTS: See LOCATION DRAWING for all visible improvements within 400' of disturbed area.
- 5) SURFACE USE: CROP LAND
- 6) INSTRUMENT OPERATOR: ADAM KELLEY

NOTE

According to Colorado law, you must commence any legal action based upon any defect in this W.L.C. within three years after you discover such defect. In no event, may any action based upon any defect in this survey be commenced more than ten years after the date of the certificate shown hereon. (13-80-105 C.R.S.)

LEGEND

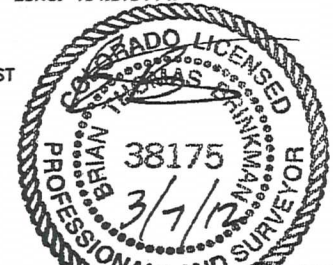
- = ALIQUOT MONUMENT AS DESCRIBED
○ = CALCULATED POSITION

SURFACE LOCATION

LAT: 40.42491°N
LONG: 104.52638°W
PDOP: 1.9
ELEV: 4615'
1/4, 1/4: NW1/4SW1/4
NEAREST PROPERTY LINE: 169' WEST

BOTTOM HOLE

LAT: 40.42205°N
LONG: 104.51044°W

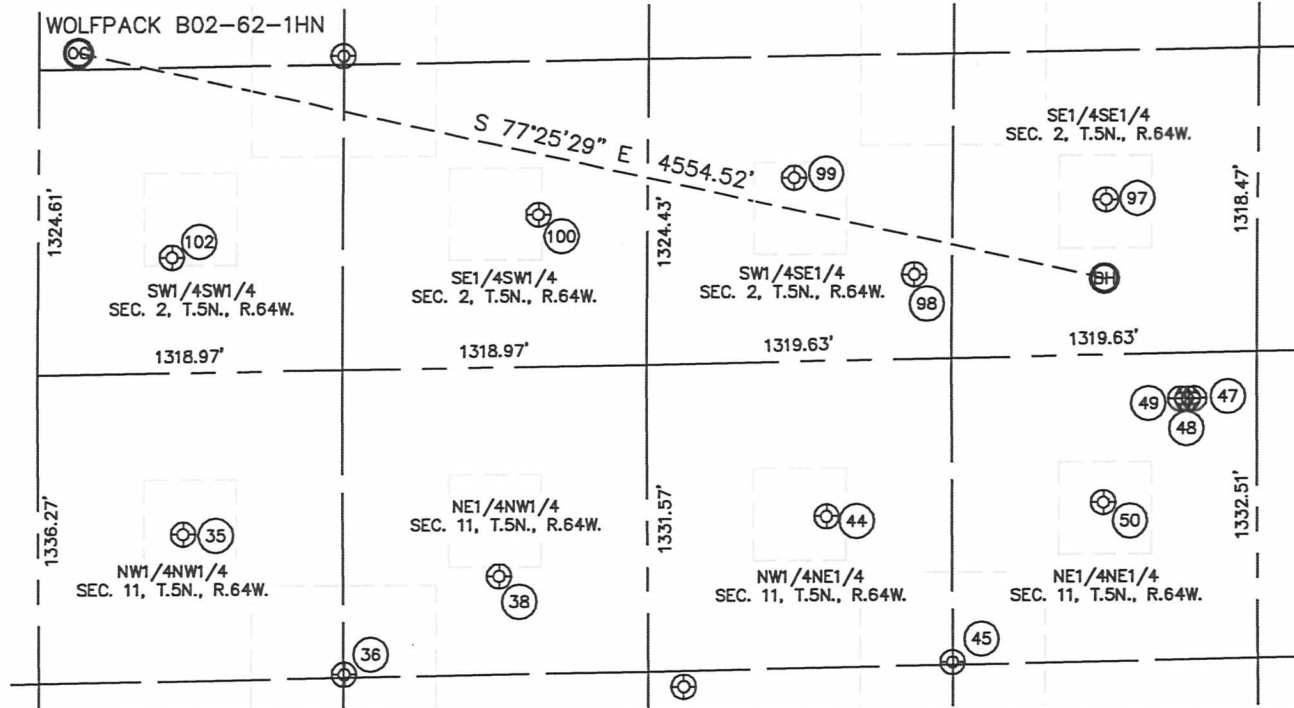


Brian T. Brinkman—On behalf of Lat40°, Inc.
Colorado Licensed Professional Land Surveyor No. 38175
DATE: 3/5/2012
PROJECT#: 2012029

SITE SKETCH

WOLFPACK B02-62-1HN

SECTION: 2
TOWNSHIP: 5N
RANGE: 64W



(35)
TREBOR B11-4
NW1/4NW1/4
700' FNL
628' FWL
LAT-40.41916°N
LONG-104.52478°W
PDOP: 2.3
ELEV: 4608'

(36)
TREBOR B11-19
NE1/4NW1/4
1319' FNL
1321' FWL
LAT-40.41747°N
LONG-104.52230°W
PDOP: 1.2
ELEV: 4602'

(38)
TREBOR B11-3
NE1/4NW1/4
907' FNL
1994' FWL
LAT-40.41861°N
LONG-104.51988°W
PDOP: 1.2
ELEV: 4605'

(44)
TREBOR B11-2
NW1/4NE1/4
677' FNL
1862' FEL
LAT-40.41926°N
LONG-104.51478°W
PDOP: 1.6
ELEV: 4605'

(45)
TREBOR B11-17
NW1/4NE1/4
1320' FNL
1320' FEL
LAT-40.41751°N
LONG-104.51284°W
PDOP: 1.1
ELEV: 4603'

(47)
WACKER B12-69HN
NE1/4NE1/4
198' FNL
271' FEL
LAT-40.42061°N
LONG-104.50906°W
PDOP: 1.4
ELEV: 4598'

(48)
WACKER B1-79HN
NE1/4NE1/4
199' FNL
300' FEL
LAT-40.42061°N
LONG-104.50917°W
PDOP: 1.4
ELEV: 4598'

(49)
WACKER B11-69HN
NE1/4NE1/4
199' FNL
330' FEL
LAT-40.42061°N
LONG-104.50927°W
PDOP: 1.9
ELEV: 4598'

(50)
TREBOR B11-1
NE1/4NE1/4
643' FNL
665' FEL
LAT-40.41938°N
LONG-104.51048°W
PDOP: 1.6
ELEV: 4596'

(97)
MEYER B2-16
SE1/4SE1/4
671' FSL
656' FEL
LAT-40.42299°N
LONG-104.51040°W
PDOP: 3.4
ELEV: 4603'

(98)
M & M 2-23
SW1/4SE1/4
364' FSL
1484' FEL
LAT-40.42213°N
LONG-104.51339°W
PDOP: 1.6
ELEV: 4598'

(99)
TREBOR B2-15
SW1/4SE1/4
795' FSL
2006' FSL
LAT-40.42330°N
LONG-104.51525°W
PDOP: 2.2
ELEV: 4610'

(100)
BUCKMUR B2-14
SE1/4SW1/4
657' FSL
2165' FWL
LAT-40.42290°N
LONG-104.51923°W
PDOP: 1.7
ELEV: 4616'

(102)
BUCKLEN 1-2
SW1/4SW1/4
499' FSL
580' FWL
LAT-40.42245°N
LONG-104.52493°W
PDOP: 1.5
ELEV: 4611'

