



Scale: 5" / 100'
Measured Depth Log

Well Name State Pronghorn 31-34-16HNB

Location NENE SEC16 T5N R61W

State COLORADO

Country USA

API Number 05-123-36470-00

County WELD

Rig Number 128

Spud Date 3/1/2013

Drilling Completed 3/10/2013

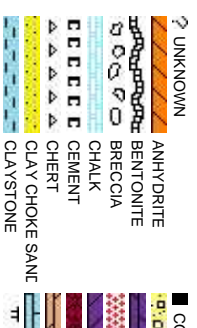
Surface Coordinates 178 FNL X 796 FEL (LAT:40.40781,-104.20710)

Ground Elevation	4,629	K.B. Elevation	4,644
Logged Interval	5,650	To	10,882
		Total Depth	10,882
Type of Drilling Fluid	H2O, LSND		

Company Bonanza Creek
Address 410 17th Street
 Denver, CO 802

Name Paul McKay
Company Bonanza Creek
 410 17th Street
 Denver, CO 802

Wellsite Geologists



Operator

Energy Inc.

Suite 1500
202

Geologist

Energy Inc.

Suite 1500
202

Other

Kevin Geraghty
David Brooks

Rock Types

CONGLOMERATE	METAMORPHIC	SHALY SILTSTONE
DOLOMITE	NO SAMPLE	SILT SHALE
GRANITE	SALT	SILTSTONE
GYPSUM	SANDSTONE	TILL
IGNEOUS	SALT-PEPPER SAND	TUFF
SIDERITE or LIMONITE	SHALE	WELDED TUFF
LIMESTONE	SHALE COLORED	
MARLSTONE	SHALE GRAY	
	SHALY SANDSTONE	

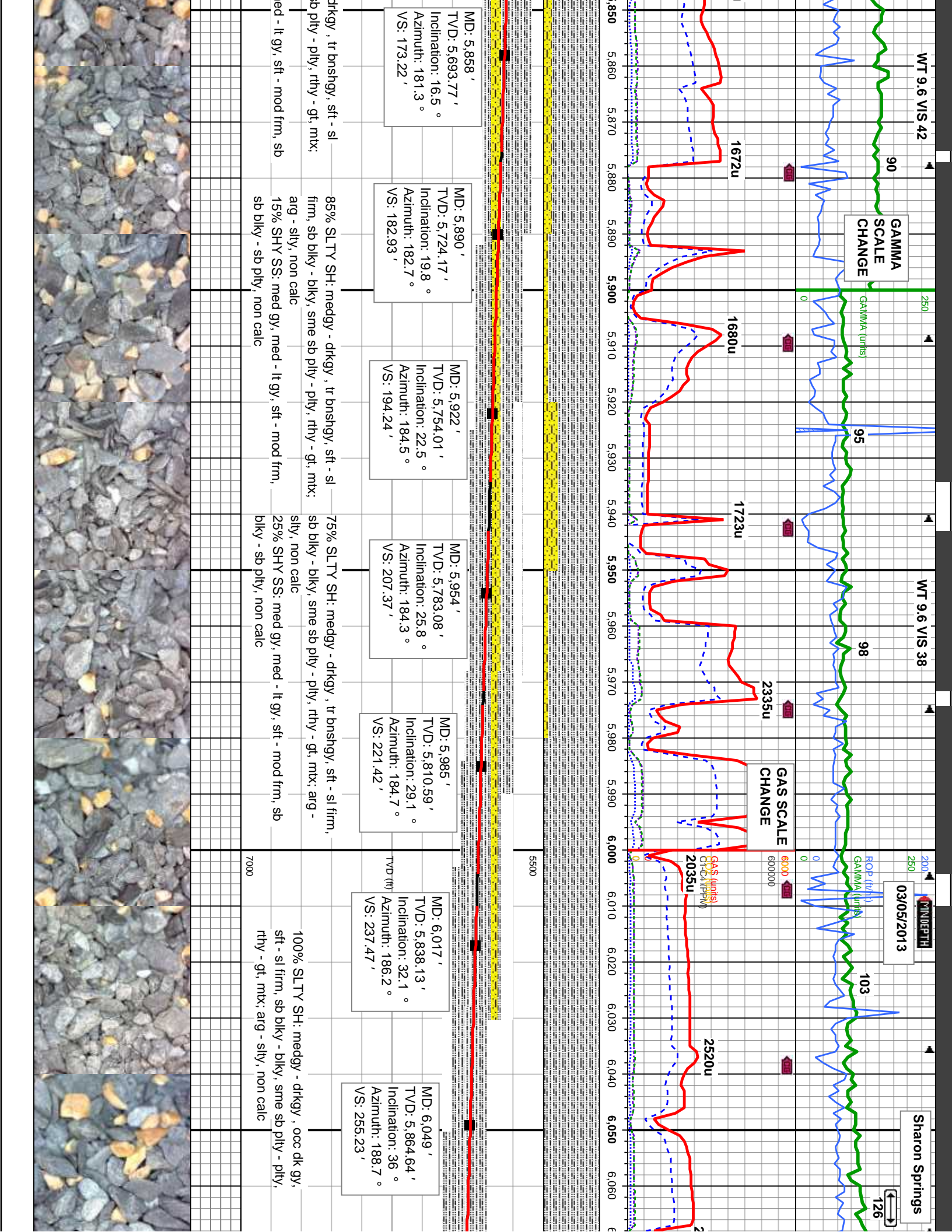
Accessories

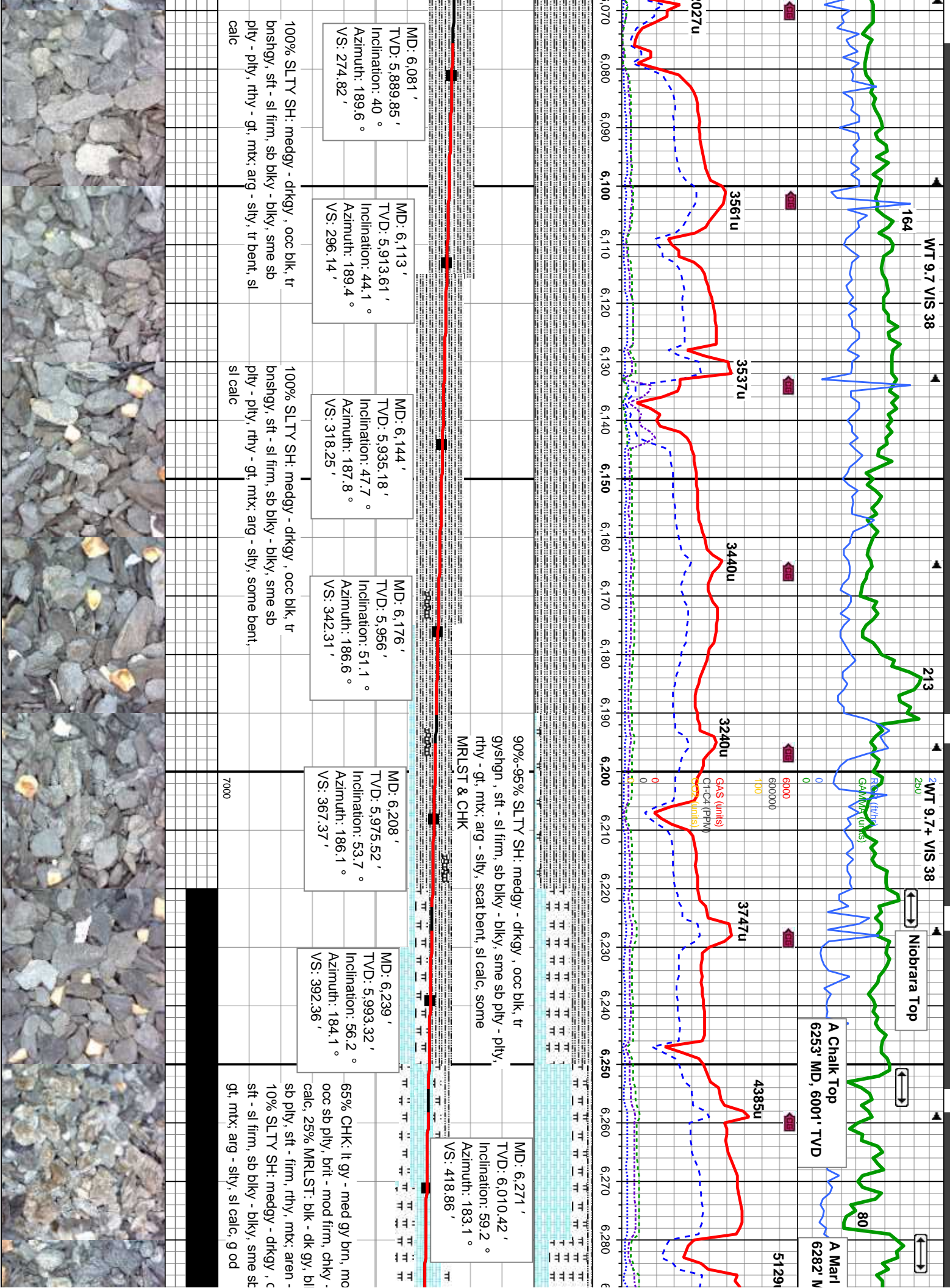
Fossils	F FOSSIL	ARGILLACEOUS	GLAUCONITE	TUFFACEOUS
GASTROPOD	ARGILLITE GRAIN	GYPSIFEROUS		
ALGAE	OOLITE	B BENTONITE	HEAVY MINERAL	
AMPHIRORA	OSTRACOD	BITUMENOUS SUBSTANCE	INOCERAMUS	Stringer
BELEMITE	PELECYPOD	BRECCIA FRAGMENTS	KAOLIN	ANHYDRITE STRINGER
BIOCLASTIC	PELLET	CALCAREOUS	MARLSTONE	BENTONITE STRINGER
BRYOZOA	PISOLITE	CARBONACEOUS FLAKES	MINERAL CRYSTALS	COAL STRINGER
CEPHALOPOD	PLANT REMAINS	CHTDK	NOODULES	DOLOMITE STRINGER
CORAL	PLANT SPORES	CHTLT	COAL - THIN BEDS	GYPSUM STRINGER
CRINOID	SCAPHOPOD	DOLOMITIC	PHOSPHATE PELLETS:	LIMESTONE STRINGER
ECHINOID	STROMATOPOROID	FELDSPAR	PYRITE	MARLSTONE (CALC) STRG
FISH		FERRUGINOUS PELLET	SALT CAST	MARLSTONE (DOL) STRG
FORAMINIFERA	ANHYDRITIC	FERRUGINOUS	SANDY	SANDSTONE STRINGER
		SILTY	SILICEOUS	SHALE STRINGER
				SILTSTONE STRINGER

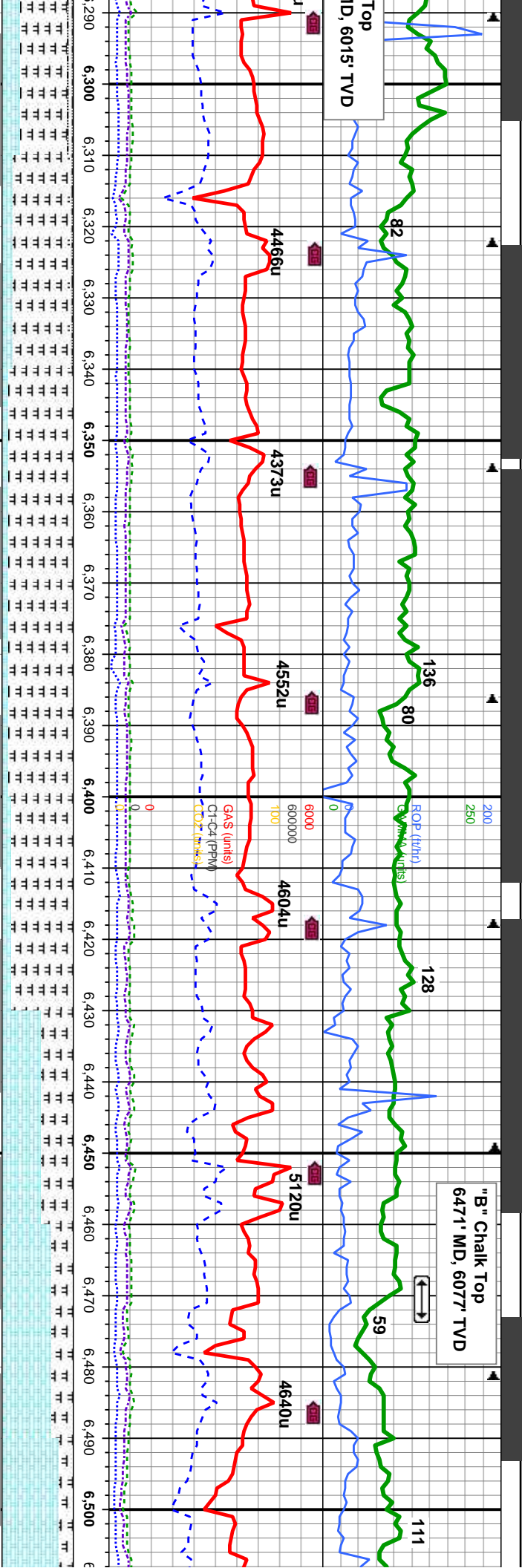
Other Symbols

Oil Show	MOLDIC	FAULT	WIRELINE TESTED - LEFT	E EARTHY
DEAD	ORGANIC	FORMATION TOP	WIRELINE TESTED - RT	FX FINELYXLN
EVEN	PINPOINT	GAS SHOW		ES GRAINSTONE
	VUGGY	MINDEPTH MN DEPTH		L LITHOGRAPHIC
QUESTIONABLE		NORMAL FAULT		MX MICROXLN
SPOTTED STAINING	BIT	OIL SHOW		MS MUDSTONE
Porosity	CONNECTION (LEFT)	OVERTURNED STRATA		PS PACKSTONE
E EARTHY	CONNECTION (RIGHT)	REVERSE FAULT		WS WACKSTONE
FENESTRAL	CONNECTION GAS	SIDEWALL CORE (LEFT)		
FRACTURE	CORE - LOST	SIDEWALL CORE (RIGHT)		
INTERCRYSTALLINE	CORE - RECOVERED	SLIDE		
INTEROOLITIC	DST INTERVAL	SURVEY		
		TRIP GAS		
			Textures	Sorting
			BOUNDSTONE	M MODERATE
			CHALKY	P POOR
			CRYPTOXLN	W WELL

Slide/Rotate		Bit Data	
ROP ROF GAMMA		Bit #: 3 Type: HE04JMRSV Size: 8.75 Depth In: 5,668 ' Depth Out: 6,657 ' Jets: 3/20 S/N: 1335491	
Total Gas & Chromatograph GAS C1 C2 C3 C4 CO2		COLUMBINE LOGGING RIGGED UP ON 03/4/2013 MANNED 2-PERSON LOGGING WITH BLOODHOUND GAS CHROMATOGRAPH UNIT #0312 BEGAN ON 03/4/2013	
Depth Labels		5,670 5,680 5,690 5,700 5,710 5,720 5,730 5,740 5,750 5,760 5,770 5,780 5,790 5,800 5,810 5,820 5,830 5,840 5	
% Lith		1800u 1529u 1620u 1941u 1755u	
Well Bore		MD: 5,700 ' TVD: 5,538.21 ' Inclination: 2.2 ° Azimuth: 204.5 ° VS: 148.55 '	
Oil Show		MD: 5,731 ' TVD: 5,569.15 ' Inclination: 4.7 ° Azimuth: 192.6 ° VS: 150.4 '	
Images		MD: 5,763 ' TVD: 5,600.95 ' Inclination: 7.8 ° Azimuth: 188 ° VS: 153.87 '	
		MD: 5,795 ' TVD: 5,632.54 ' Inclination: 10.5 ° Azimuth: 183.6 ° VS: 158.88 '	
		MD: 5,827 ' TVD: 5,663.84 ' Inclination: 13.6 ° Azimuth: 181.7 ° VS: 165.4 '	







MD: 6,303 '
TVD: 6,026.08 '
Inclination: 62.2 °
Azimuth: 182.4 °
VS: 446.11 '

MD: 6,335 '
TVD: 6,040.06 '
Inclination: 66 °
Azimuth: 181.3 °
VS: 474.12 '

MD: 6,366 '
TVD: 6,051.72 '
Inclination: 69.8 °
Azimuth: 180.3 °
VS: 501.95 '

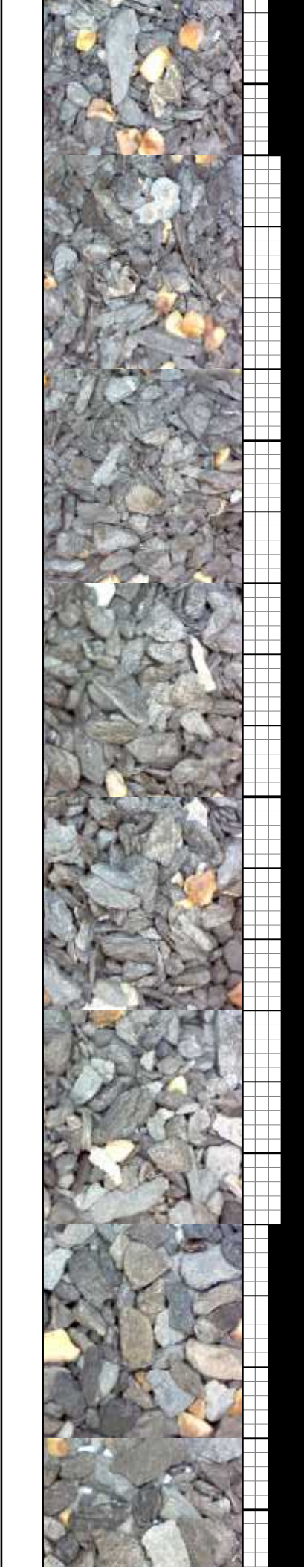
MD: 6,398 '
TVD: 6,061.71 '
Inclination: 73.8 °
Azimuth: 179.4 °
VS: 531.27 '

MD: 6,430 '
TVD: 6,069.67 '
Inclination: 77.4 °
Azimuth: 178.9 °
VS: 561.06 '

MD: 6,461 '
TVD: 6,075.66 '
Inclination: 80.3 °
Azimuth: 179.6 °
VS: 590.32 '

MD: 6,493 '
TVD: 6,080.36 '
Inclination: 82.8 °
Azimuth: 179 °
VS: 620.77 '

t, blkly - sb blkly, sbwxy, mtx: v	75% CHK: lt gy - med gy brn, mot, blkly - sb blkly, occ sb	90% MRLST: dk gy-blk, blkly - sb blkly, sme sb	55% CHK: lt gy - med gy brn, mot, blkly - sb	80% CHK
ly - sb blkly, sme	ply, brt - mod firm, chky - sbwxy, mtx: v calc, 15%	ply, sft - firm, rthy, mtx: aren - silty, 10% CHK: lt	blkly, occ sb ply, brt - mod firm, chky - sbwxy,	sb ply, br
sily, mod calc,	MRLST: blk - dk gy, blkly - sb blkly, sme sb ply, sft - firm,	gy - med gy brn, mot, blkly - sb blkly, occ sb ply,	mtx: v calc, 45% MRLST: dk gy-blk, blkly - sb	MRLST: c
occ blk, tr gysn,	rthy, mtx: aren - silty, mod calc, 5% S.LTY SH: medgy -	brt - mod firm, chky - sbwxy, mtx: v calc, some	blkly, sme sb ply, sft - firm, rthy, mtx: aren - silty,	firm, rthy,
ply - ply, rthy -	dkgy, occ blk, tr gysn, sft - sl firm, sb blkly - blkly,	pos uphole silty sh con 7000	some pos uphole silty sh con	con
	sme sb ply - ply, rthy - gt, mtx: arg - silty, tr pyr, sl calc			



WT 9.7+ VIS 37

WT 9.8+ VIS 39

03/06/2013

Bit Data

Bit #: 4

Type: VM513S

Size: 6.12

Depth In: 6.657'

Depth Out: 10.882'

Jets: 5/11

S/N: 4005220

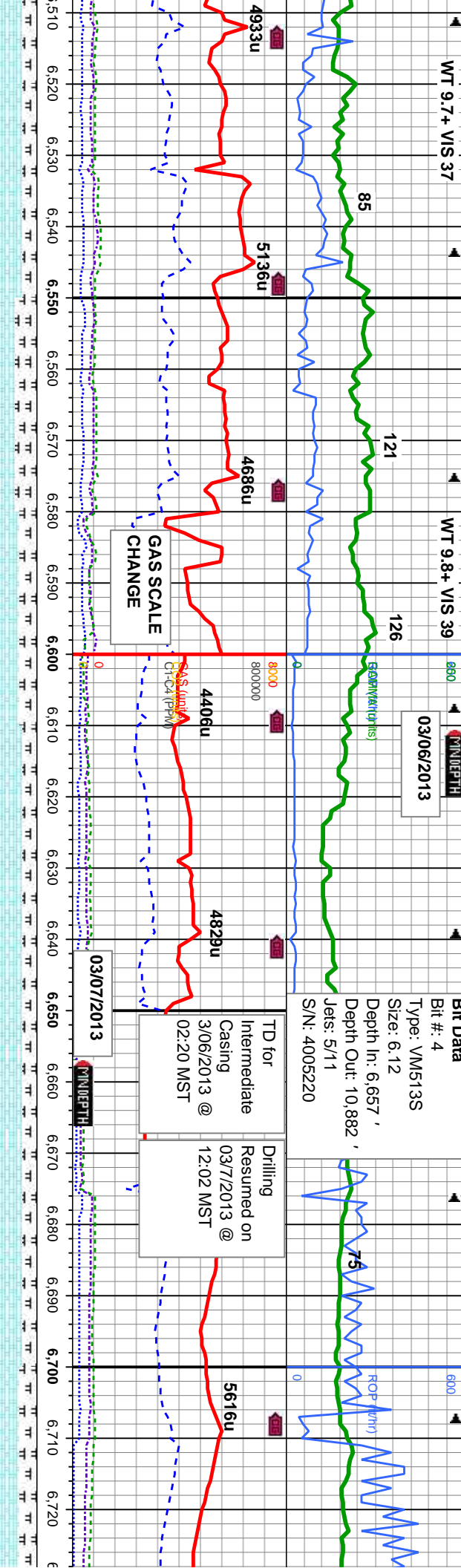
TD for Intermediate Casing 3/06/2013 @ 02:20 MST

Drilling Resumed on 03/7/2013 @ 12:02 MST

03/07/2013

MINDEPTH

GAS SCALE CHANGE



MD: 6.525' TVD: 6.083.73' Inclination: 85.1° Azimuth: 179.6° VS: 651.39'

MD: 6.557' TVD: 6.085.72' Inclination: 87.8° Azimuth: 178.9° VS: 682.1'

MD: 6.588' TVD: 6.086.74' Inclination: 88.4° Azimuth: 178° VS: 711.79'

MD: 6.607' TVD: 6.087.21' Inclination: 88.8° Azimuth: 179.6° VS: 730.02'

MD: 6.685' TVD: 6.087.34' Inclination: 91° Azimuth: 179° VS: 805.06'

MD: 6.716' TVD: 6.086.75' Inclination: 91.2° Azimuth: 179° VS: 834.84'

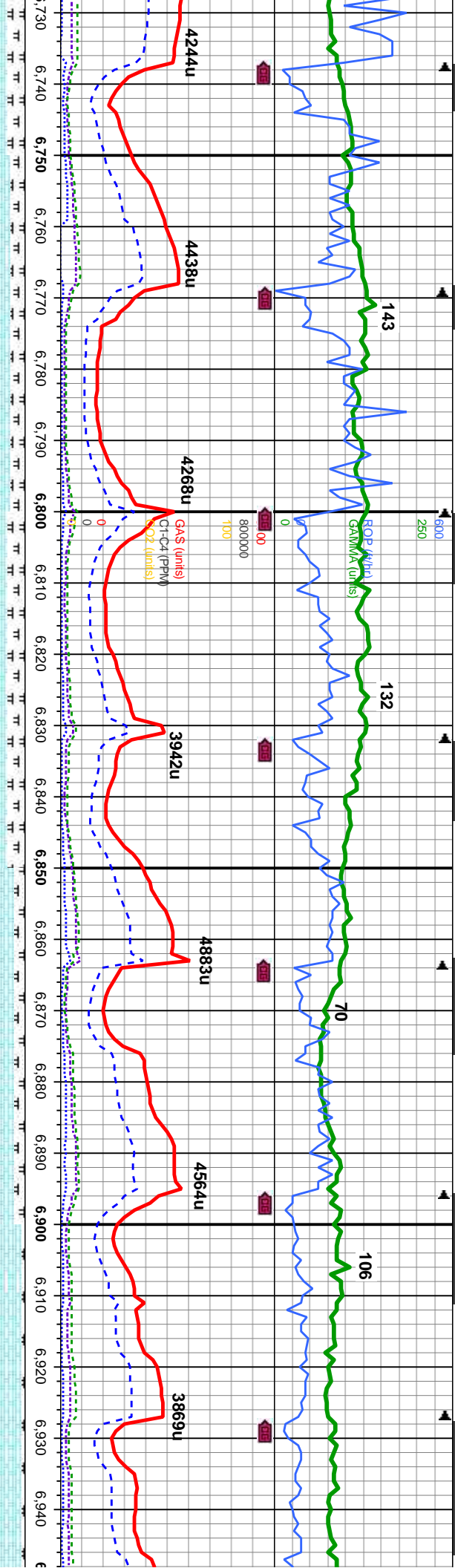
it gy - med gy brn, mot, blkly - sb blkly, occ
it - mod firm, chky - sbwxy, mt; v calc, 20%
blk gy-blk, blkly - sb blkly, sme sb ply, sft -
mt; aren - silty, some pos uphole silty sh

75% CHK: it gy - med gy brn, mot, blkly - sb blkly,
occ sb ply, brit - mod firm, chky - sbwxy, mt; v
calc, 25% MRLST: dk gy-blk, blkly - sb blkly, sme
sft - firm, rthy, mt; aren - silty, some pos
uphole silty sh con

80% CHK: it gy - med gy brn, mot, blkly - sb blkly,
occ sb ply, brit - mod firm, chky - sbwxy, mt; v calc,
20% MRLST: dk gy-blk, blkly - sb blkly, sme sb ply,
sft - firm, rthy, mt; aren - silty, some pos uphole
silty sh con

75% CHK:
ply, brit - r
gy-blk, blk
some imbd
resd ring, l





MD: 6,747 '
TVD: 6,085.94 '
Inclination: 91.8 °
Azimuth: 177.8 °
VS: 864.52 '

MD: 6,779 '
TVD: 6,084.82 '
Inclination: 92.2 °
Azimuth: 177.6 °
VS: 895.03 '

MD: 6,811 '
TVD: 6,083.45 '
Inclination: 92.7 °
Azimuth: 176.2 °
VS: 925.4 '

MD: 6,842 '
TVD: 6,081.99 '
Inclination: 92.7 °
Azimuth: 175.3 °
VS: 954.62 '

MD: 6,874 '
TVD: 6,080.48 '
Inclination: 92.7 °
Azimuth: 173.8 °
VS: 984.54 '

MD: 6,906 '
TVD: 6,079.06 '
Inclination: 92.4 °
Azimuth: 171.8 °
VS: 1,014.12 '

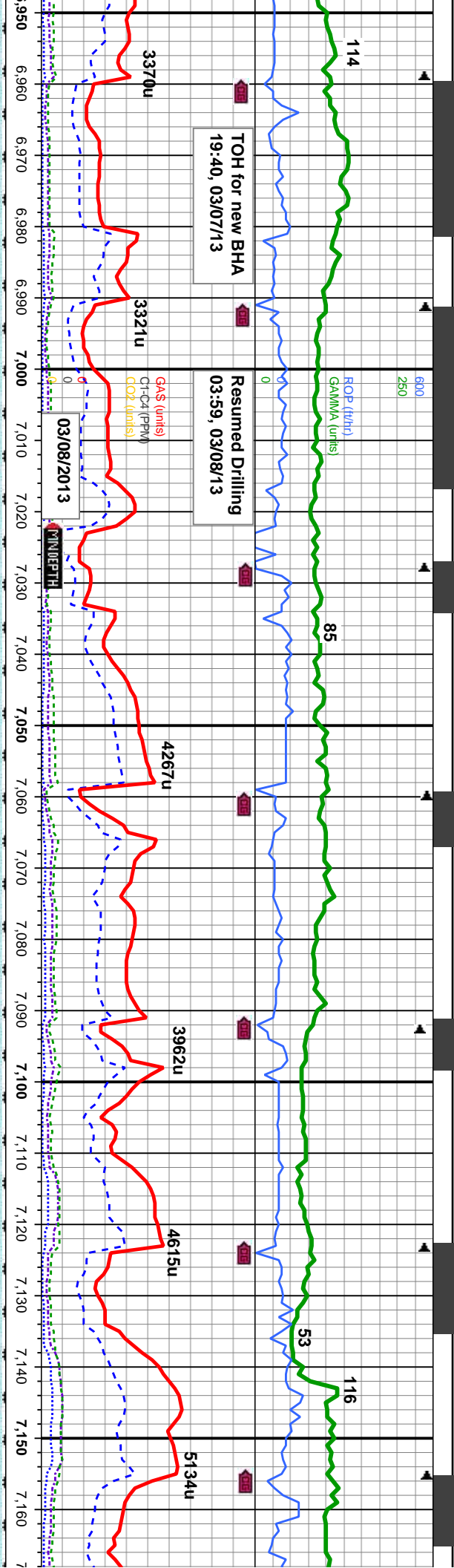
MD: 6,938 '
TVD: 6,077.8 '
Inclination: 92.1 °
Azimuth: 169.2 °
VS: 1,043.19 '

med gy-dtkgy, occ gy brn, mot, blkly - sb blkly, occ sb
mod firm, chky - sbwxy, mtz; v calc, 25% MRLST: dk
y - sb blkly, sme sb plty, sft - firm, rthy, mtz; aren - silty,
cal, fr od, abnt bishwh stmg, bri bishwh mky cut, yel
no flor, tr yel-brn stng

80% CHK: med gy-dtkgy, occ gy brn, mot, blkly - sb blkly, occ sb plty, brit
- mod firm, chky - sbwxy, mtz; v calc, 20% MRLST: dk gy-blk, blkly - sb
blkly, sme sb plty, sft - firm, rthy, mtz; aren - silty, fr od, bishwh stmg, bri
bishwh mky cut, yel resd ring, no flor, tr yel-brn stng

95% CHK: med gy-dtkgy, occ gy t
brit - mod firm, chky - sbwxy, mtz;
sb blkly, sme sb plty, sft - firm, rthy
stmg, bri bishwh mky cut, yel resd

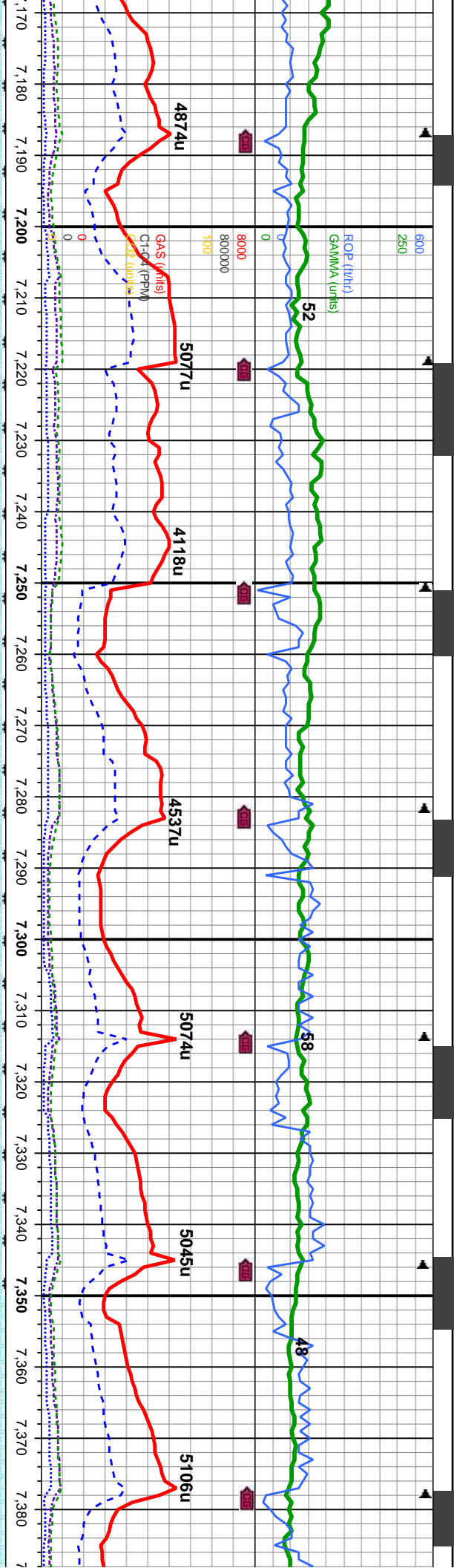




MD: 6,977 ' TVD: 6,076.51 ' Inclination: 91.7 ° Azimuth: 166 ° VS: 1,077.75 '	MD: 7,008 ' TVD: 6,076.05 ' Inclination: 90 ° Azimuth: 164.6 ° VS: 1,104.65 '	MD: 7,040 ' TVD: 6,076.25 ' Inclination: 89.3 ° Azimuth: 164.8 ° VS: 1,132.24 '	MD: 7,072 ' TVD: 6,076.69 ' Inclination: 89.1 ° Azimuth: 164.4 ° VS: 1,159.81 '	MD: 7,104 ' TVD: 6,077.34 ' Inclination: 88.6 ° Azimuth: 164.3 ° VS: 1,187.3 '	MD: 7,135 ' TVD: 6,078.28 ' Inclination: 87.9 ° Azimuth: 166.4 ° VS: 1,214.2 '	MD: 7,160 ' TVD: 6,078.28 ' Inclination: 87.9 ° Azimuth: 166.4 ° VS: 1,240.0 '
---	---	---	---	--	--	--

95% CHK: Itgy-med gy, occ drkgy, mot, blk, sb blk, occ sb ply, brit - mod firm, chky - sbwxy, mt; v calc, 5% MRLST: dk gy-blk, blk - sb blk, sme sb ply, mod sft - firm, rthy, mt; aren - silty, occ lse & imbd cal, g od, bishwh stmg, bri bishwh mky cut, yel resd ring, no flor, tr yel-bm stng	95% CHK: Itgy-med gy, occ drkgy, mot, blk, sb blk, occ sb ply, brit - mod firm, chky - sbwxy, mt; v calc, 5% MRLST: dk gy-blk, blk - sb blk, sme sb ply, mod sft - firm, rthy, mt; aren - silty, occ lse & imbd cal, g od, bishwh stmg, bri bishwh mky cut, yel resd ring, no flor, tr yel-bm stng
--	--

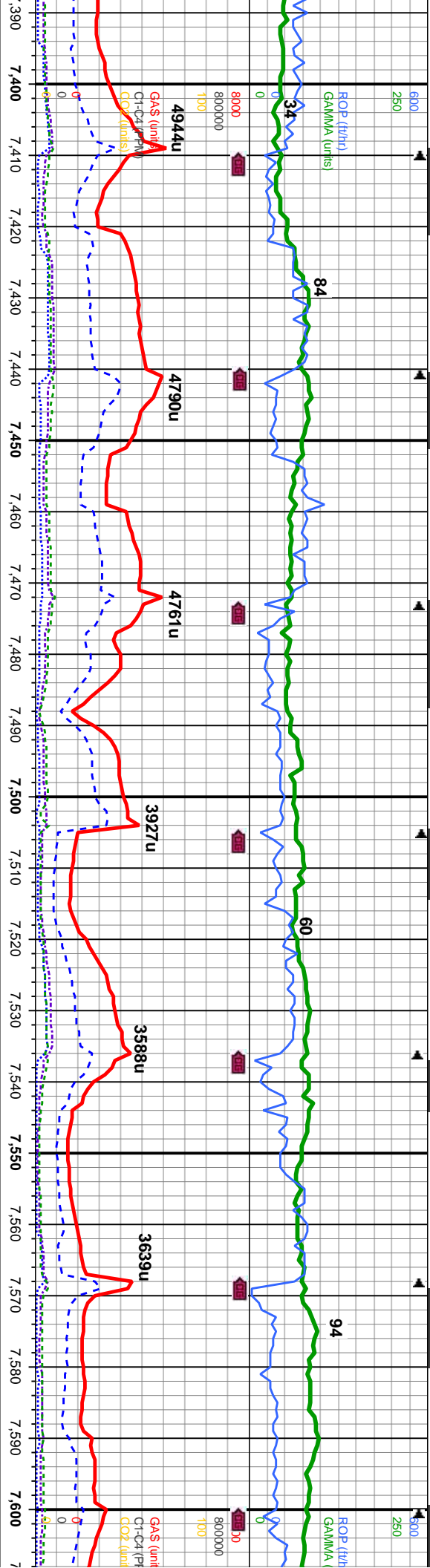




79.48' MD: 7.199' TVD: 6,080.71' Inclination: 87.8° Azimuth: 167.8° VS: 1,270.55'	79.48' MD: 7.231' TVD: 6,081.88' Inclination: 88° Azimuth: 169.4° VS: 1,299.17'	79.48' MD: 7.263' TVD: 6,082.95' Inclination: 88.2° Azimuth: 170.4° VS: 1,328.11'	79.48' MD: 7.294' TVD: 6,083.84' Inclination: 88.5° Azimuth: 172° VS: 1,356.43'	79.48' MD: 7.326' TVD: 6,084.54' Inclination: 89° Azimuth: 173.2° VS: 1,385.99'	79.48' MD: 7.358' TVD: 6,085.01' Inclination: 89.3° Azimuth: 173.2° VS: 1,415.67'
---	---	---	---	---	---

7000	95% CHK: wht-crm,ltgy-med gy, mot, blk - sb blk, occ sb pty, brit - mod firm, chky - sbwxy, mtx; v calc, 5% MRLST: dk gy-blk, blk - sb blk, sme sb pty, mod sft - firm, rthy, mtx; aren - silty, occ lse & imbd cal, g od, bishwh string, bri bishwh mky cut, yel resd ring, no flor, tr yel-bm sting
------	---

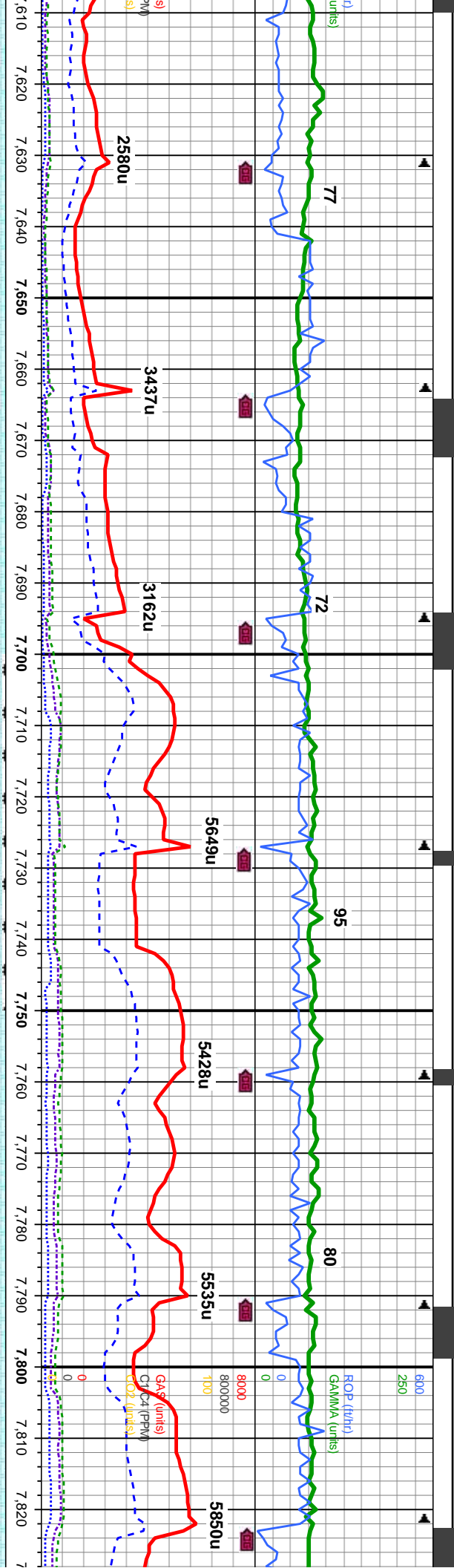




MD: 7,390 ' TVD: 6,085.4 ' Inclination: 88.3 ° Azimuth: 174.1 ° VS: 1,445.45 '	MD: 7,422 ' TVD: 6,085.9 ' Inclination: 88.9 ° Azimuth: 174.5 ° VS: 1,475.36 '	MD: 7,453 ' TVD: 6,086.61 ' Inclination: 88.5 ° Azimuth: 176 ° VS: 1,504.51 '	MD: 7,485 ' TVD: 6,087.56 ' Inclination: 88.1 ° Azimuth: 178.3 ° VS: 1,534.93 '	MD: 7,517 ' TVD: 6,088.81 ' Inclination: 87.4 ° Azimuth: 178.2 ° VS: 1,565.53 '	MD: 7,549 ' TVD: 6,090.13 ' Inclination: 87.9 ° Azimuth: 179 ° VS: 1,596.19 '	MD: 7,580 ' TVD: 6,091.1 ' Inclination: 88.5 ° Azimuth: 180.3 ° VS: 1,626.05 '
--	--	---	---	---	---	--

100% CHK: wht-crm,ltgy-med gy, mot, blkly - sb blkly, occ sb pily, brit - mod firm, chky - sbwxy, mtx; v calc, occ lse & imbd cal, tr MRLST, mod od, abnt blshwh strng, bri blshwh mky cut, yel resd ring, no flor, tr yel-brn sting	100% CHK: wht-crm,ltgy-med gy, mot, blkly - sb blkly, occ sb pily, brit - mod firm, chky - sbwxy, mtx; v calc, occ lse & imbd cal, tr MRLST, mod od, abnt blshwh strng, bri blshwh mky cut, yel resd ring, no flor, tr yel-brn sting
--	--





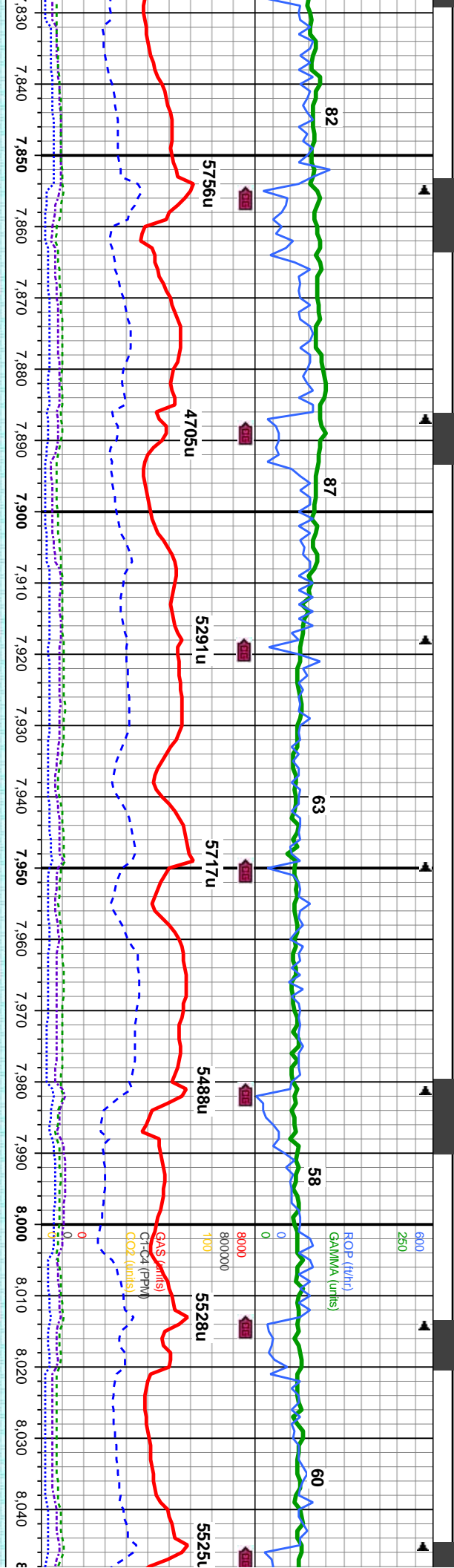
MD: 7,612 ' TVD: 6,092.05 ' Inclination: 88.1 ° Azimuth: 182.7 ° VS: 1,657.14 '	MD: 7,644 ' TVD: 6,093.03 ' Inclination: 88.4 ° Azimuth: 182.4 ° VS: 1,688.36 '	MD: 7,676 ' TVD: 6,093.67 ' Inclination: 89.3 ° Azimuth: 182.5 ° VS: 1,719.57 '	MD: 7,708 ' TVD: 6,093.86 ' Inclination: 90 ° Azimuth: 183.4 ° VS: 1,750.85 '	MD: 7,739 ' TVD: 6,093.67 ' Inclination: 90.7 ° Azimuth: 184.1 ° VS: 1,781.24 '	MD: 7,771 ' TVD: 6,093.2 ' Inclination: 91 ° Azimuth: 184.1 ° VS: 1,812.65 '	MD: 7,803 ' TVD: 6,092.75 ' Inclination: 90.6 ° Azimuth: 184.1 ° VS: 1,844.06 '	MD: 7,835 ' TVD: 6,092.3 ' Inclination: 89.8 ° Azimuth: 182.5 ° VS: 1,875.37 '
---	---	---	---	---	--	---	--

100% CHK: wht-frm, ltgy-med gy, mot, blk - sb blk, occ sb pty, brit - mod firm, chky - sbwxy, mt; v calc, occ lse & imbd cal, tr MRLST, mod od, tr fos, tr bent, abnt blshwh string, bri blshwh mky cut, yel resdl ring, no flor, tr yel-brn string

100% CHK: wht-frm, ltgy-med gy, mot, blk - sb blk, occ sb pty, brit - mod firm, chky - sbwxy, mt; v calc, occ lse & imbd cal, tr MRLST, mod od, tr fos, tr bent, blshwh string, bri blshwh mky cut, yel resdl ring, no flor, tr yel-brn string

100% CHK: wht-frm, ltgy-med gy, mot, blk - sb blk, occ sb pty, brit - mod firm, chky - sbwxy, mt; v calc, occ lse & imbd cal, tr MRLST, mod od, tr fos, tr bent, blshwh string, bri blshwh mky cut, yel resdl ring, no flor, tr yel-brn string





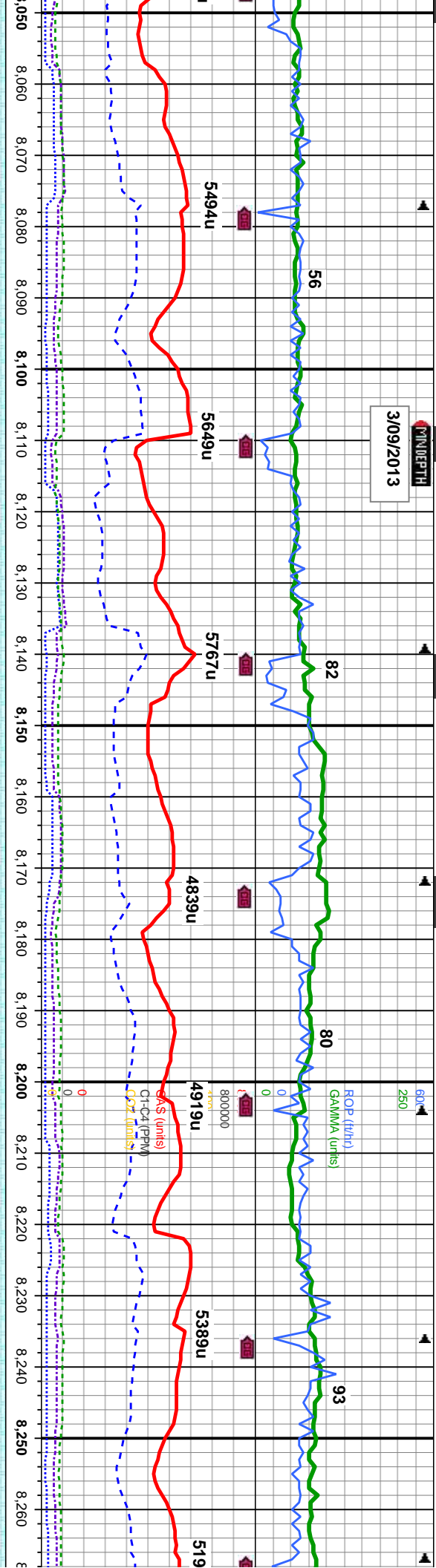
MD: 7,835 ' TVD: 6,092.53 ' Inclination: 90.2 ° Azimuth: 183.8 ° VS: 1,875.45 '	MD: 7,867 ' TVD: 6,092.64 ' Inclination: 89.4 ° Azimuth: 185.4 ° VS: 1,906.92 '	MD: 7,898 ' TVD: 6,093.16 ' Inclination: 88.7 ° Azimuth: 184.5 ° VS: 1,937.42 '	MD: 7,930 ' TVD: 6,093.69 ' Inclination: 89.4 ° Azimuth: 184.8 ° VS: 1,968.89 '	MD: 7,962 ' TVD: 6,093.69 ' Inclination: 90.6 ° Azimuth: 184.7 ° VS: 2,000.37 '	MD: 7,994 ' TVD: 6,093.43 ' Inclination: 90.3 ° Azimuth: 184.3 ° VS: 2,031.82 '	MD: 8,026 ' TVD: 6,093.41 ' Inclination: 89.8 ° Azimuth: 186.1 ° VS: 2,063.34 '
---	---	---	---	---	---	---

100% CHK: wht-frm,ltgy-med gy, v mot, blkly - sb blkly, occ sb plty, brit - mod firm, chky - sbwxy, mx; v calc, occ ise & imbd cal, tr MRLST, mod od, abnt fos, tr bent, abnt bishwn stmg, bri bishwn mky cut, yel resdl ring, no flor, tr yel-brn stng

100% CHK: wht-frm,ltgy-m sb plty, brit - mod firm, chky imbd cal, tr MRLST, mod o bri bishwn mky cut, yel resd



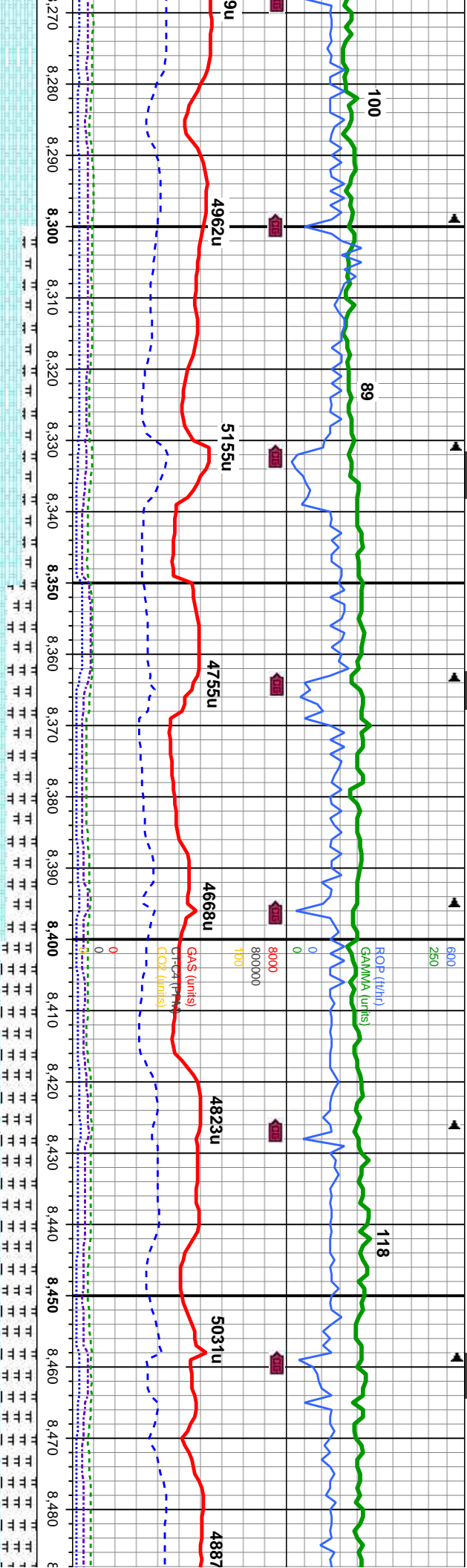
DATE: 3/09/2013



MD: 8,057 ' TVD: 6,093.51 ' Inclination: 89.8 ° Azimuth: 185.7 ° VS: 2,093.94 '	MD: 8,089 ' TVD: 6,093.46 ' Inclination: 90.4 ° Azimuth: 184.7 ° VS: 2,125.46 '	MD: 8,121 ' TVD: 6,093.29 ' Inclination: 90.2 ° Azimuth: 184.8 ° VS: 2,156.94 '	MD: 8,153 ' TVD: 6,093.4 ' Inclination: 89.4 ° Azimuth: 185.4 ° VS: 2,188.45 '	MD: 8,185 ' TVD: 6,093.96 ' Inclination: 88.6 ° Azimuth: 184.1 ° VS: 2,219.92 '	MD: 8,216 ' TVD: 6,094.66 ' Inclination: 88.8 ° Azimuth: 183.8 ° VS: 2,250.33 '	MD: 8,248 ' TVD: 6,095.33 ' Inclination: 88.8 ° Azimuth: 183.4 ° VS: 2,281.68 '
---	---	---	--	---	---	---

ed gy, v mot, blkly - sb blkly, occ - sbwxy, mtk; v calc, occ lse & d, abnt fos, tr bent, blshwh stmg, ll ring, no flor, tr yel-brn stng	100% CHK: wht-crm, lgy-med gy, v mot, blkly - sb blkly, occ sb ply, brit - mod firm, chky - sbwxy, mtk; v calc, occ lse & imbd cal, tr MRLST, mod od, abnt fos, tr bent, blshwh stmg, brit blshwh mky cut, yel resdl ring, no flor, tr yel-brn stng	100% CHK: wht-crm, lgy-med gy, v mot, blkly - sb - mod firm, chky - sbwxy, mtk; v calc, occ lse & iml mod od, abnt fos, tr bent, abnt blshwh stmg, brit blshwh resdl ring, no flor, tr yel-brn stng
---	---	--

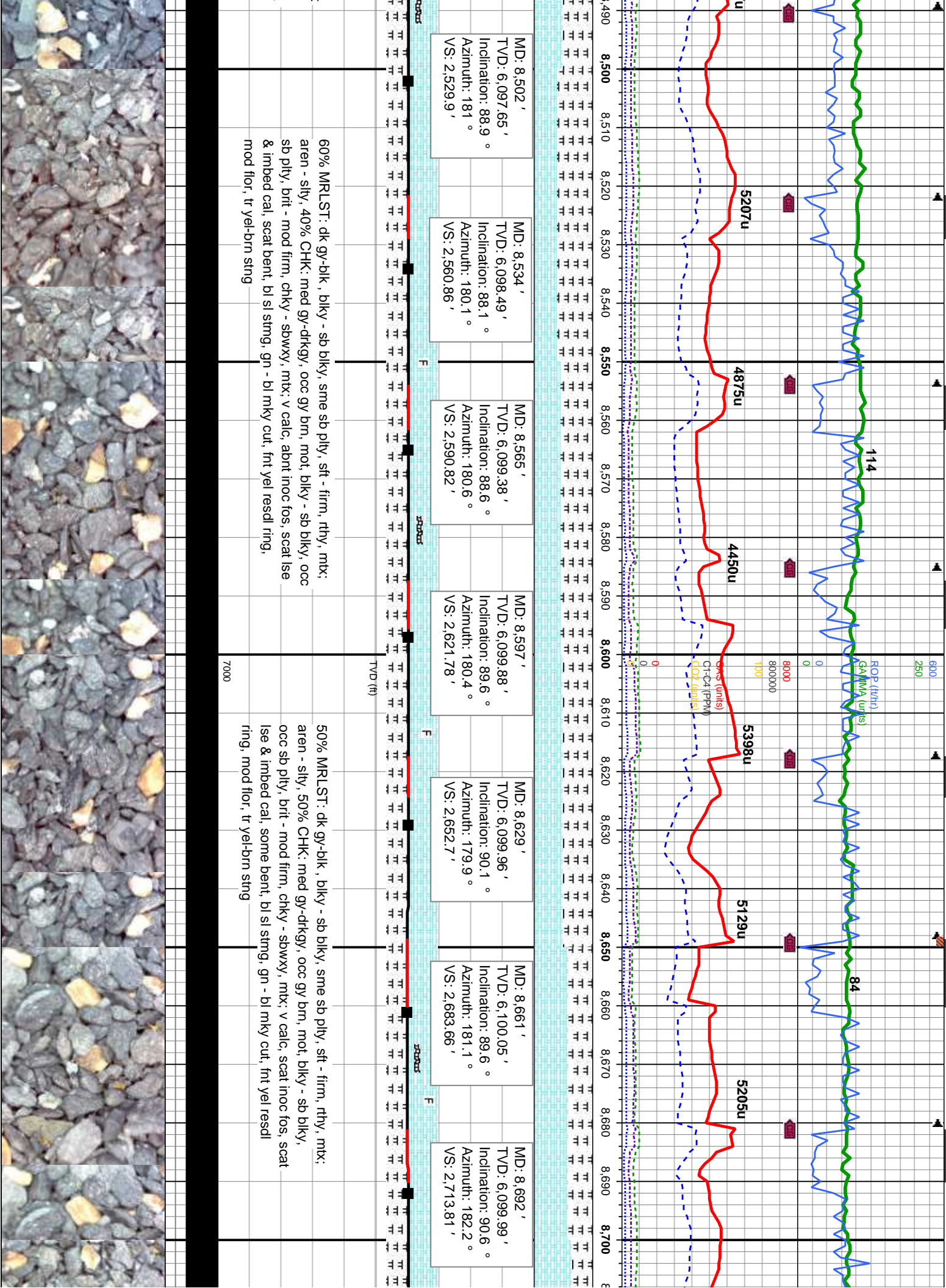


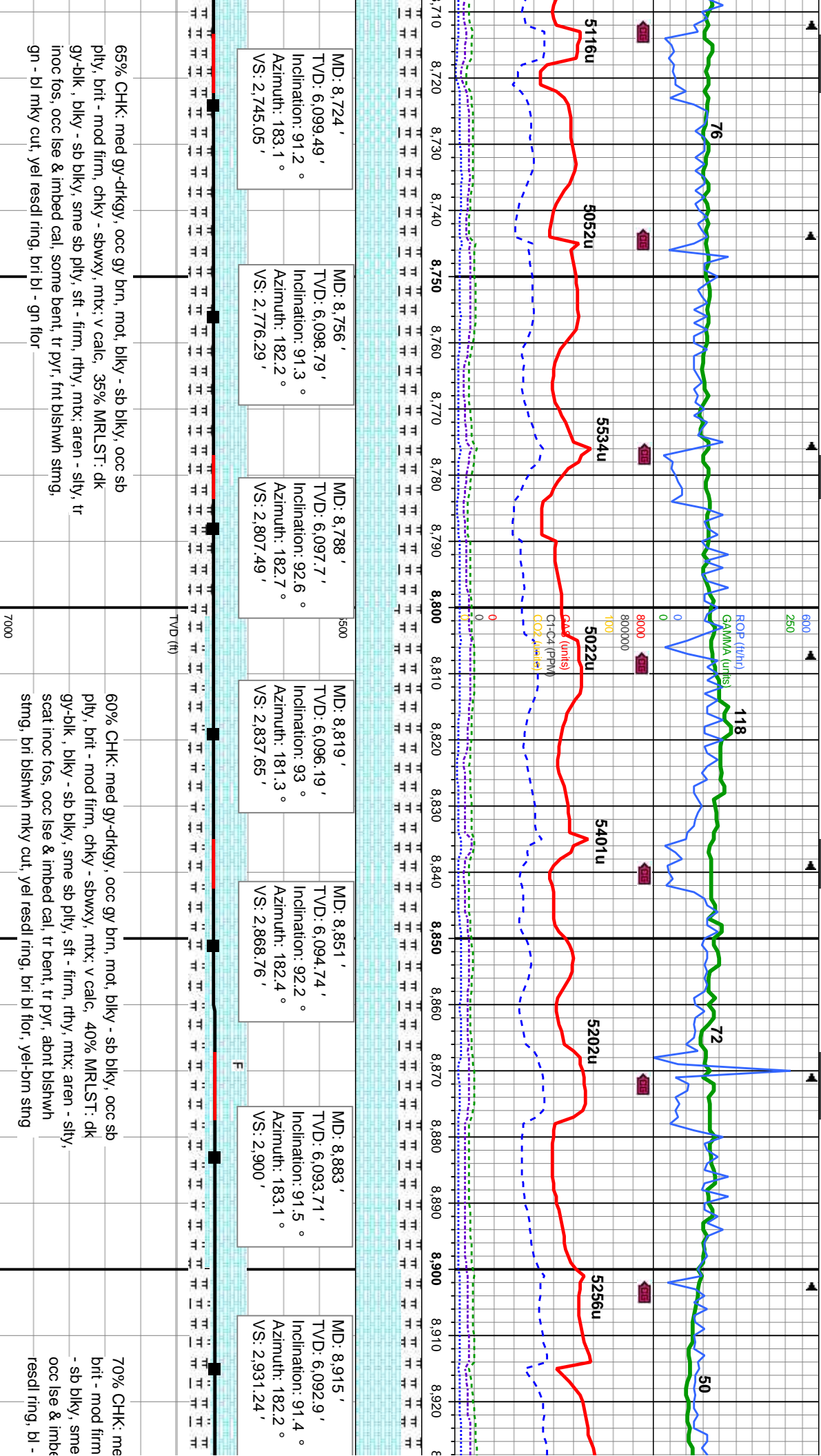


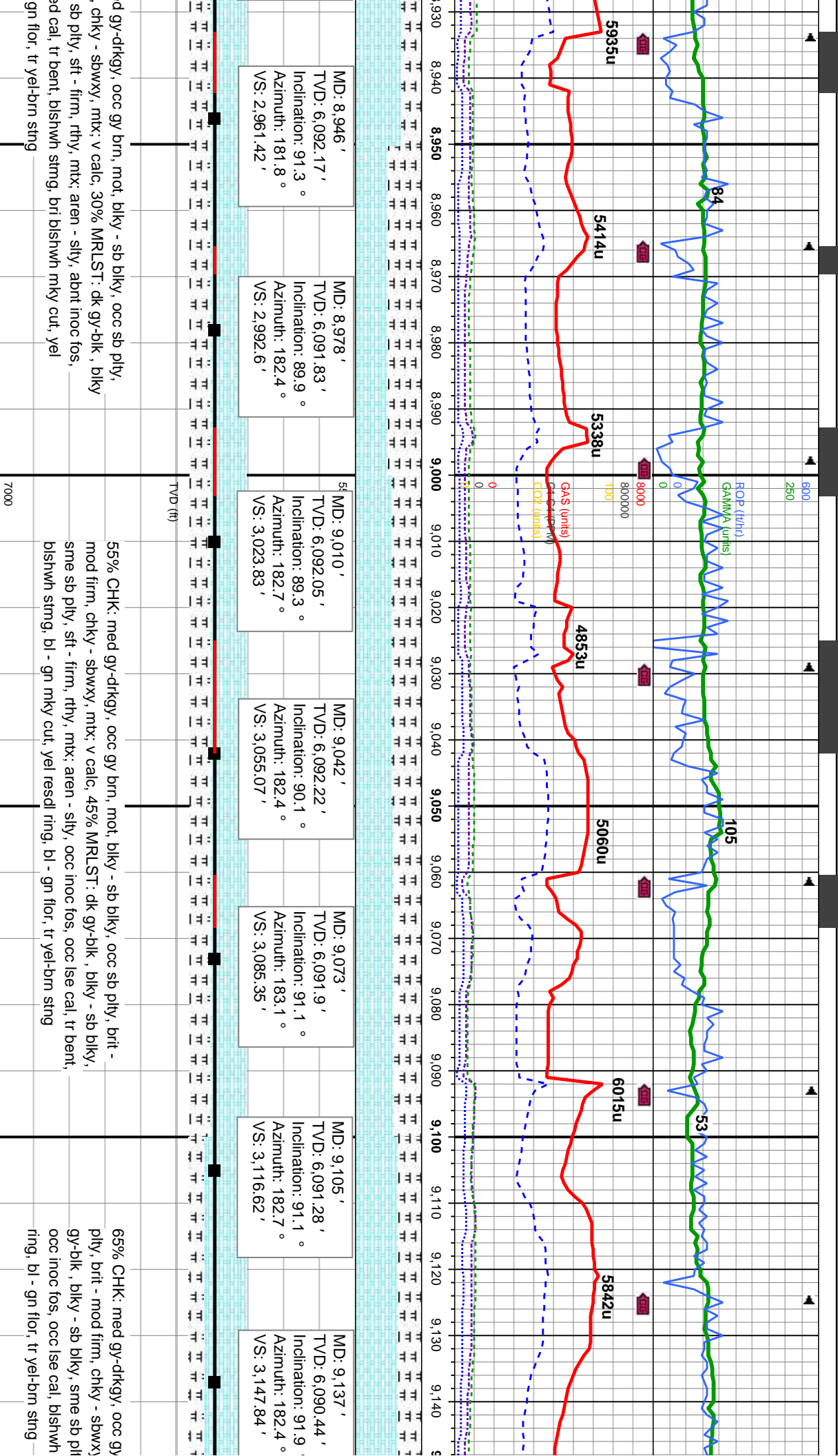
MD: 8,280 ' TVD: 6,096.09 ' Inclination: 88.5 ° Azimuth: 182.7 ° VS: 2,312.96 '	MD: 8,312 ' TVD: 6,096.93 ' Inclination: 88.5 ° Azimuth: 184.1 ° VS: 2,344.29 '	MD: 8,344 ' TVD: 6,097.57 ' Inclination: 89.2 ° Azimuth: 184.1 ° VS: 2,375.69 '	MD: 8,375 ' TVD: 6,097.81 ' Inclination: 89.9 ° Azimuth: 183.1 ° VS: 2,406.07 '	MD: 8,407 ' TVD: 6,097.7 ' Inclination: 90.5 ° Azimuth: 182 ° VS: 2,437.3 '	MD: 8,439 ' TVD: 6,097.34 ' Inclination: 90.8 ° Azimuth: 183.4 ° VS: 2,468.55 '	MD: 8,470 ' TVD: 6,097.23 ' Inclination: 89.6 ° Azimuth: 181.8 ° VS: 2,498.81 '
---	---	---	---	---	---	---

80% CHK: med gy-dkgy, occ gy brn, mot, blk - sb blk, occ sb blk, bit - mod firm, chky - sbwxy, mtx: v calc, 20% MRLST: dk gy-blk, blk - sb blk, sme sb ply, sft - firm, rthy, mx; aren - slty, some inoc fos, some lse & imbed cal, tr bent, blshwh string, bri blshwh mky cut, yel resd ring, no flor, tr yel-brn sing	50% CHK: med gy-dkgy, occ gy brn, mot, blk - sb blk, occ sb ply, bri - mod firm, chky - sbwxy, mtx: v calc, 50% MRLST: dk gy-blk, blk - sb blk, sme sb ply, sft - firm, rthy, mx; aren - slty, scat inoc fos, scat lse & imbed cal, some bent, occ pyr, abnt blshwh string, bri blshwh mky cut, yel resd ring, no flor, tr yel-brn sing
---	---









MD: 8,946 '
TVD: 6,092.17 '
Inclination: 91.3 °
Azimuth: 181.8 °
VS: 2,961.42 '

MD: 8,978 '
TVD: 6,091.83 '
Inclination: 89.9 °
Azimuth: 182.4 °
VS: 2,992.6 '

MD: 9,010 '
TVD: 6,092.05 '
Inclination: 89.3 °
Azimuth: 182.7 °
VS: 3,023.83 '

MD: 9,042 '
TVD: 6,092.22 '
Inclination: 90.1 °
Azimuth: 182.4 °
VS: 3,055.07 '

MD: 9,073 '
TVD: 6,091.9 '
Inclination: 91.1 °
Azimuth: 183.1 °
VS: 3,085.35 '

MD: 9,105 '
TVD: 6,091.28 '
Inclination: 91.1 °
Azimuth: 182.7 °
VS: 3,116.62 '

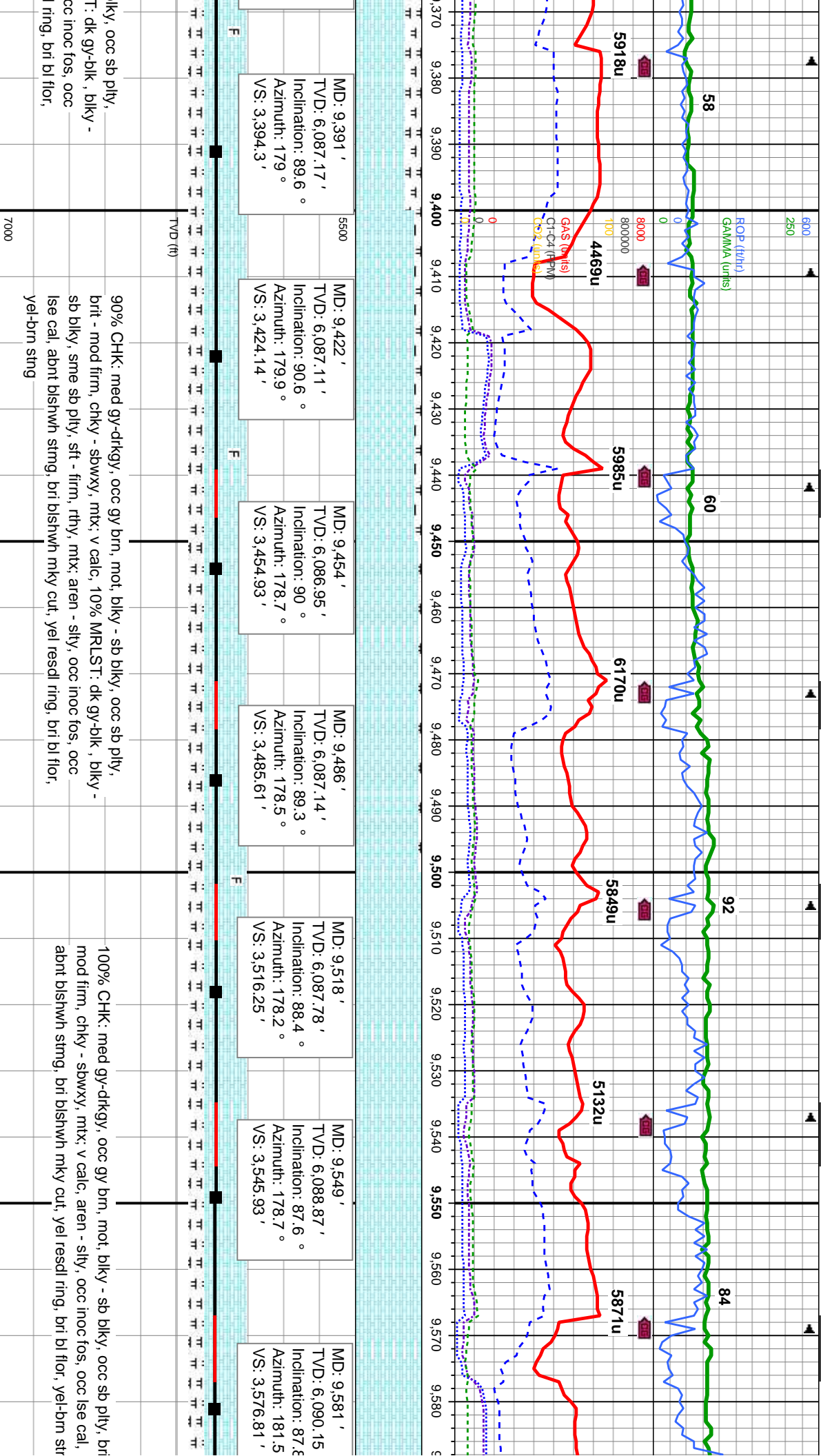
MD: 9,137 '
TVD: 6,090.44 '
Inclination: 91.9 °
Azimuth: 182.4 °
VS: 3,147.84 '

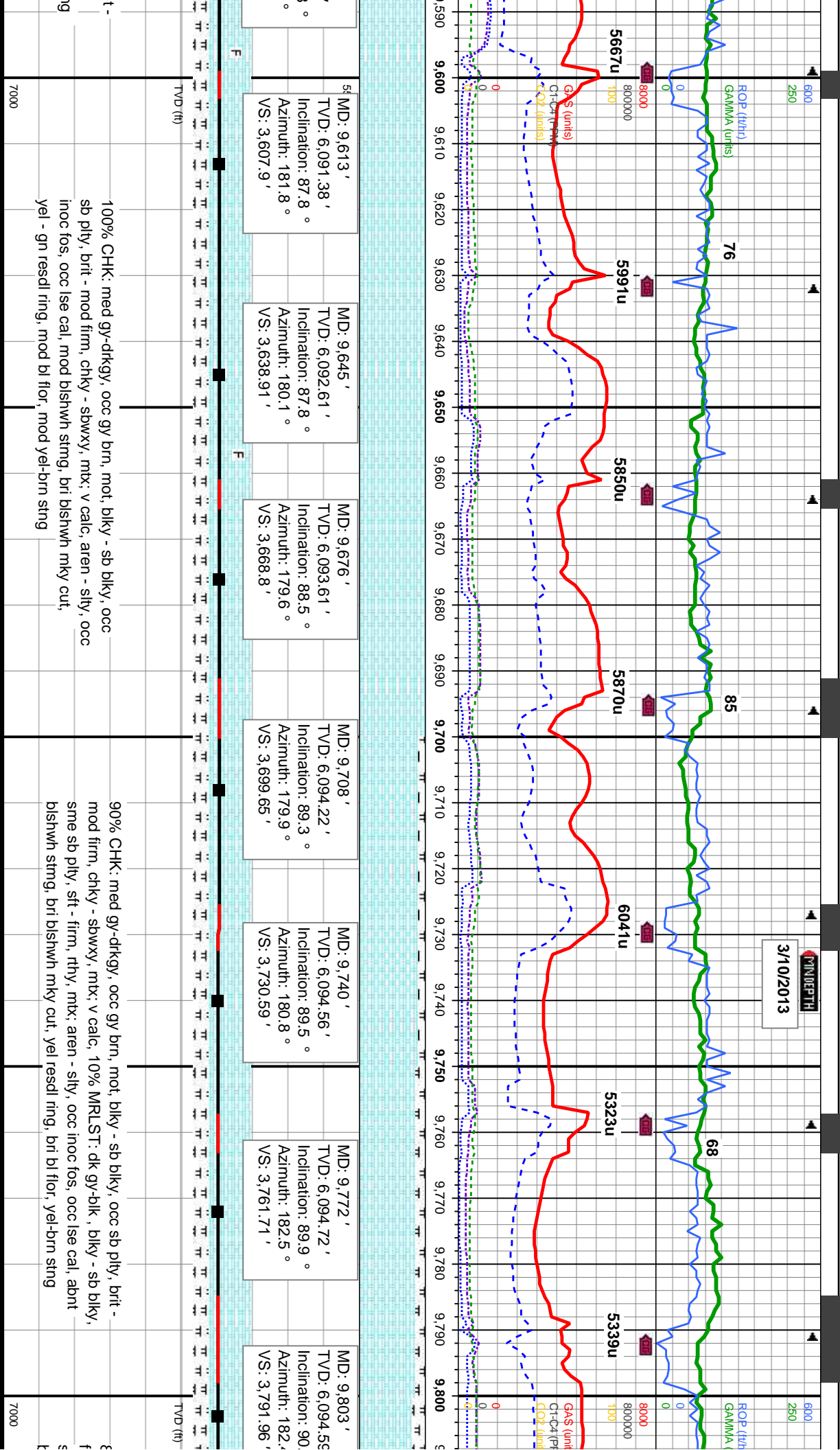
d gy-drkgy, occ gy brn, mot, blk - sb blk, occ sb pty, chky - sbwxy, mtx; v calc, 30% MRLST: dk gy-blk, blk sb pty, sft - firm, rthy, mtx; aren - sily, abnt inoc fos, d cal, tr bent, bishwh stmg, bri bishwh mky cut, yel gn flr, tr yel-brn sting

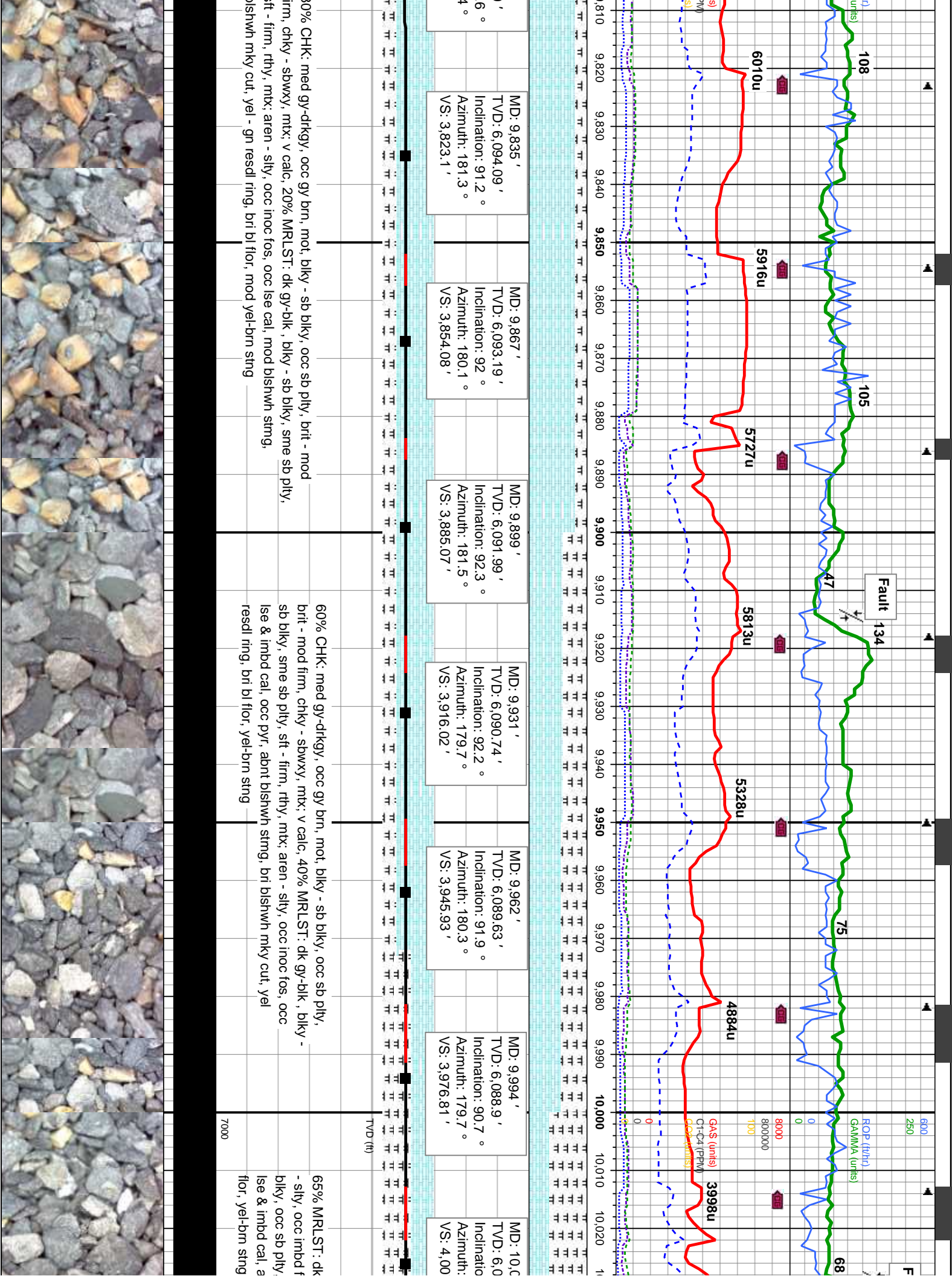
55% CHK: med gy-drkgy, occ gy brn, mot, blk - sb blk, occ sb pty, brit - mod firm, chky - sbwxy, mtx; v calc, 45% MRLST: dk gy-blk, blk - sb blk, sme sb pty, sft - firm, rthy, mtx; aren - sily, occ inoc fos, occ lse cal, tr bent, bishwh stmg, bl - gn mky cut, yel resdl ring, bl - gn flr, tr yel-brn sting

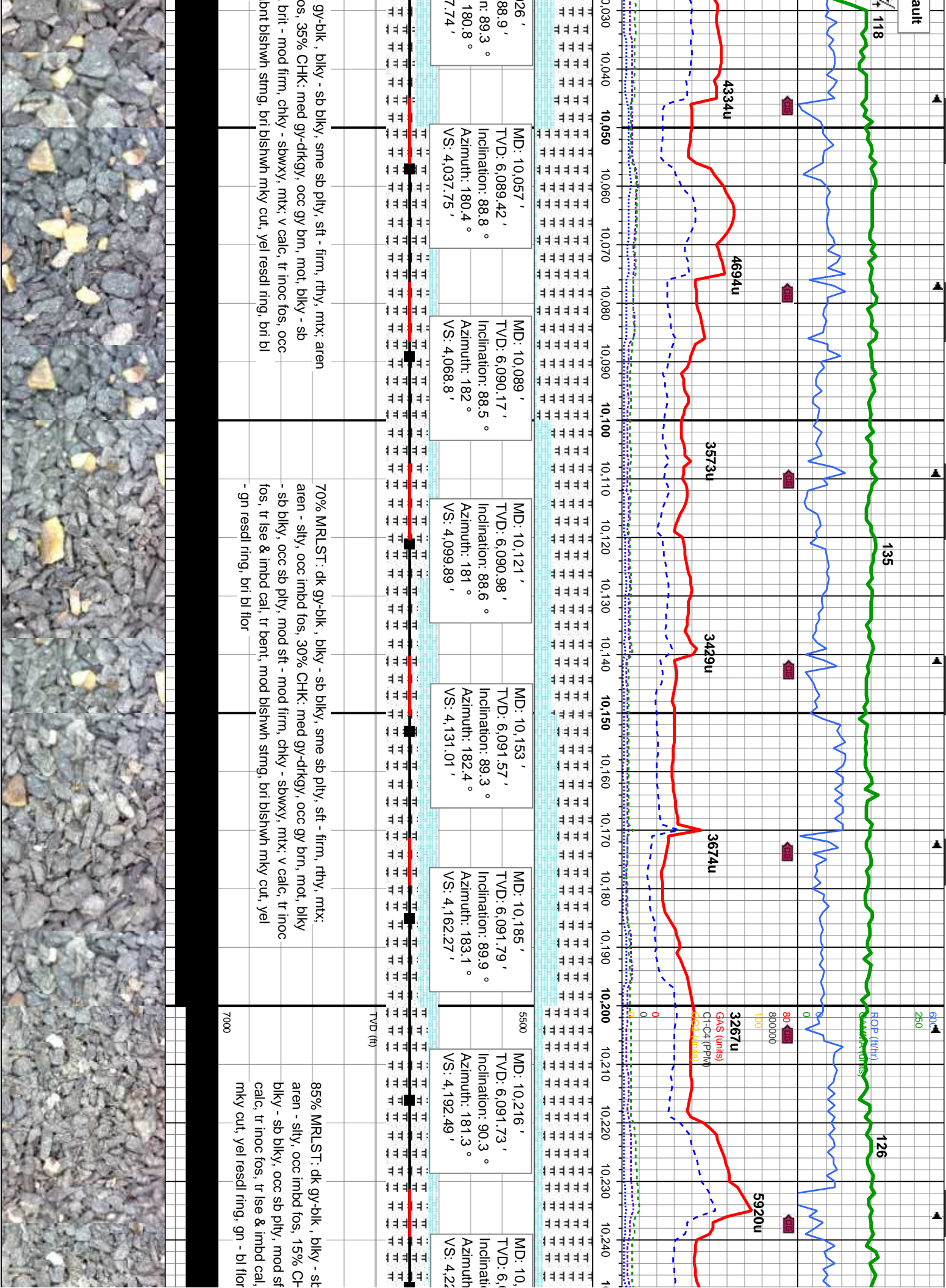
65% CHK: med gy-drkgy, occ gy pty, brit - mod firm, chky - sbwxy, gy-blk, blk - sb blk, sme sb pty, occ inoc fos, occ lse cal, bishwh ring, bl - gn flr, tr yel-brn sting

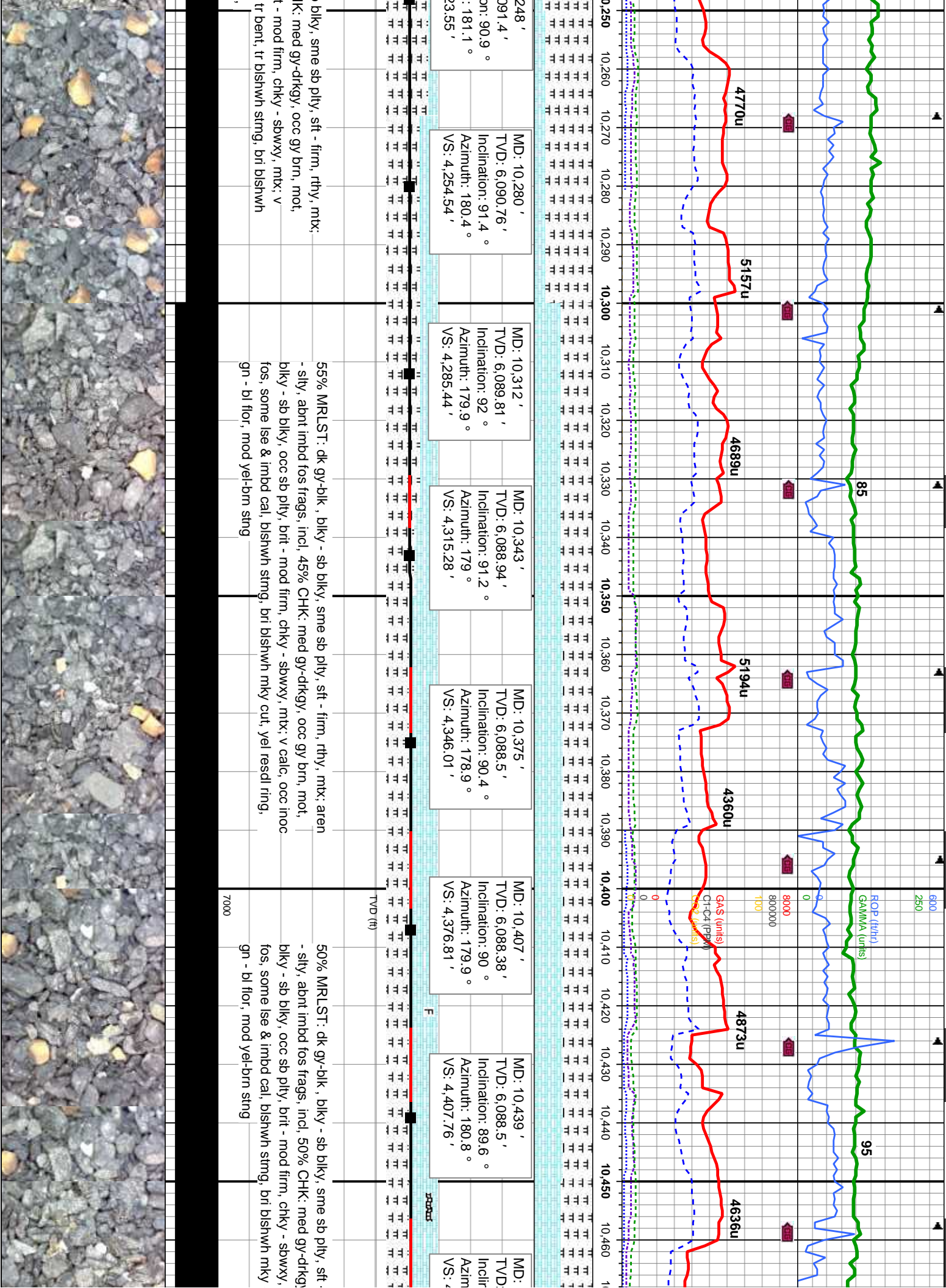


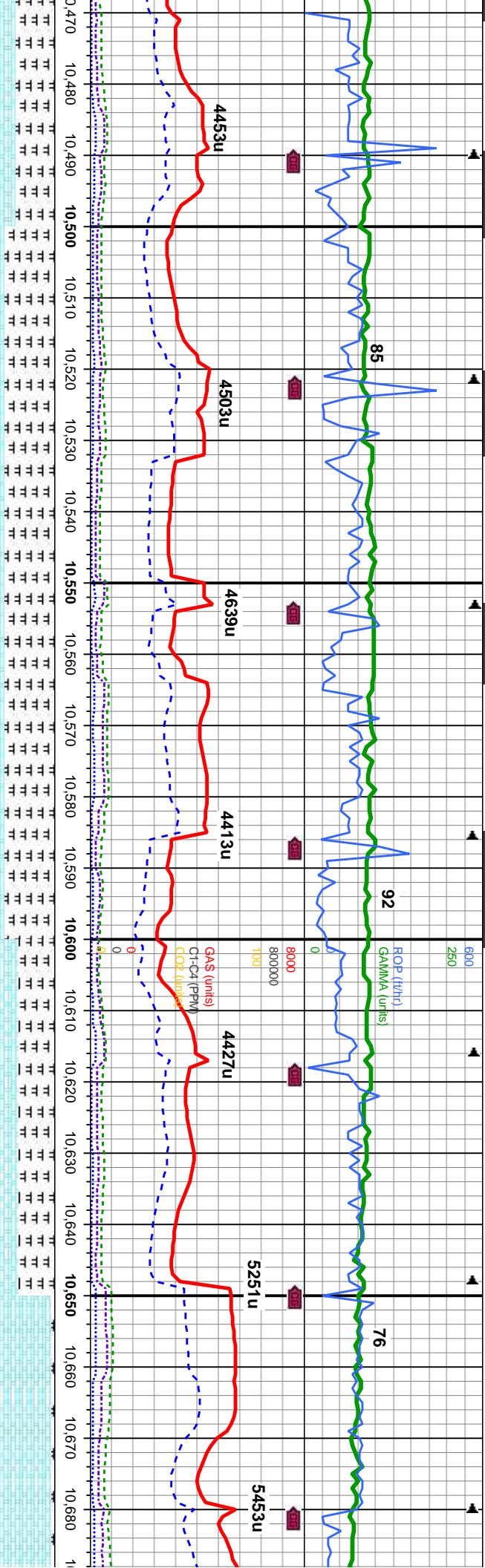








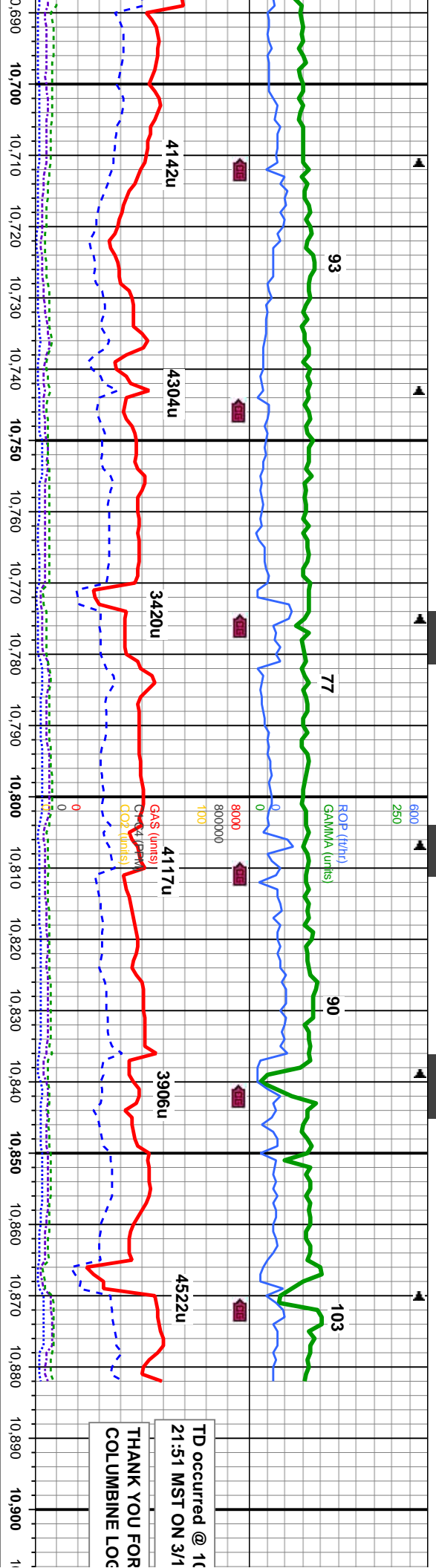




10,470 ' 6,088.6 ' ation: 90 ° uth: 182.4 ° 4,437.9 '	MD: 10,502 ' TVD: 6,088.74 ' Inclination: 89.5 ° Azimuth: 183.1 ° VS: 4,469.16 '	MD: 10,534 ' TVD: 6,089.19 ' Inclination: 88.9 ° Azimuth: 183.8 ° VS: 4,500.49 '	MD: 10,565 ' TVD: 6,089.49 ' Inclination: 90 ° Azimuth: 185.7 ° VS: 4,530.98 '	MD: 10,597 ' TVD: 6,089.32 ' Inclination: 90.6 ° Azimuth: 186.8 ° VS: 4,562.6 '	MD: 10,629 ' TVD: 6,089.01 ' Inclination: 90.5 ° Azimuth: 186.1 ° VS: 4,594.23 '	MD: 10,660 ' TVD: 6,088.74 ' Inclination: 90.5 ° Azimuth: 186.4 ° VS: 4,624.86 '	MD: 11 TVD: 6 Inclina Azimu VS: 4,
---	--	--	--	---	--	--	--

firm, rthy, mtx; aren /, occ gy brn, mot, mtx; v calc, occ inoc cut, yel resdl ring,	70% MRLST: dk gy-blk , blkly - sb blkly, sme sb pty, sft - firm, rthy, mtx; aren - slty, abnt imbd fos frags, incl, 30% CHK: med gy-drkgy, occ gy brn, mot, blkly - sb blkly, occ sb pty, brit - mod firm, chky - sbwxy, mtx; v calc, occ inoc fos, some lse & imbd cal, blshwn stmg, bri blshwn mky cut, yel resdl ring, gn - bl flor, mod yel-brn stng	50% MRLST: dk gy-blk , blkly - sb blkly, sme sb pty, sft - firm, rthy, mtx; aren - slty, abnt imbd fos frags, incl, 50% CHK: med gy-drkgy occ gy brn, mot, blkly - sb blkly, occ sb pty, brit - mod firm, chky - sbwxy, mtx; v calc, occ inoc fos, some lse & imbd cal, tr blshwn stmg, bri blshwn mky cut, yel resdl ring, gn - bl flor, -
---	--	---





TD occurred @ 10
21:51 MST ON 3/1
THANK YOU FOR
COL UMBINE LOG

MD: 10,692 ' TVD: 6,088.41 ' Inclination: 90.7 ° Azimuth: 186.4 ° VS: 656.49 '	MD: 10,724 ' TVD: 6,087.79 ' Inclination: 91.5 ° Azimuth: 186.8 ° VS: 4,688.13 '	MD: 10,756 ' TVD: 6,086.9 ' Inclination: 91.7 ° Azimuth: 185 ° VS: 4,719.71 '	MD: 10,787 ' TVD: 6,086.03 ' Inclination: 91.5 ° Azimuth: 185 ° VS: 4,750.21 '	MD: 10,819 ' TVD: 6,085.14 ' Inclination: 91.7 ° Azimuth: 185 ° VS: 4,781.71 '	MD: 10,832 ' TVD: 6,084.81 ' Inclination: 91.2 ° Azimuth: 183.6 ° VS: 4,794.47 '
--	--	---	--	--	--

90% CHK: med gy-dtkgy, occ gy brn, mot, blk - sb blk, occ sb pty, brit - mod firm, chky - sbwxy, mtx, 10% MRLST: dk gy-blk, blk - sb blk, sme sb pty, sft - firm, rthy, mtx: aren - stly, abt imbd fos frags, incl; v calc, occ inoc fos, some ise & imbd cal, tr blshwh sting, bri blshwh mky cut, yel resdl ring, gn - bl fltor,	85% CHK: med gy-dtkgy, occ gy brn, mot, blk - sb blk, occ sb pty, brit - mod firm, chky - sbwxy, mtx, 15% MRLST: dk gy-blk, blk - sb blk, sme sb pty, sft - firm, rthy, mtx: aren - stly, abt imbd fos frags, incl; v calc, occ inoc fos, some ise & imbd cal, blshwh sting, bri blshwh mky cut, yel resdl ring, gn - bl fltor, mod yel-brn sting
--	---



[illegible]

0,882' MD
0/2013

**USING
AGING INC**

A blank coordinate grid with x and y axes ranging from -5 to 5. The grid lines are spaced at intervals of 1 unit. The x-axis is labeled with integers from -5 to 5, and the y-axis is labeled with integers from -5 to 5. The origin (0,0) is at the center of the grid.

10,9

[illegible]