

Bonanza Creek Energy Inc.

Weld, Co

Sec 24-T5N-R62W

State Antelope J14-F11-24HNB

Hz

Plan: Plan #1

Standard Planning Report - Geographic

09 January, 2013



Departure
Energy Services (US) LP

Bonanza Creek Energy Inc.

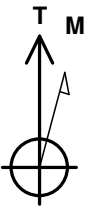
Project: Weld, Co
Site: Sec 24-T5N-R62W
Well: State Antelope J14-F11-24HNB
Wellbore: Hz
Design: Plan #1



Departure
Energy Services (US) LP

REFERENCE INFORMATION

Co-ordinate (N/E) Reference: Well State Antelope J14-F11-24HNB, True North
Vertical (TVD) Reference: WELL @ 4574.00ft (Original Well Elev)
Section (VS) Reference: Slot - (0.00N, 0.00E)
Measured Depth Reference: WELL @ 4574.00ft (Original Well Elev)
Calculation Method: Minimum Curvature

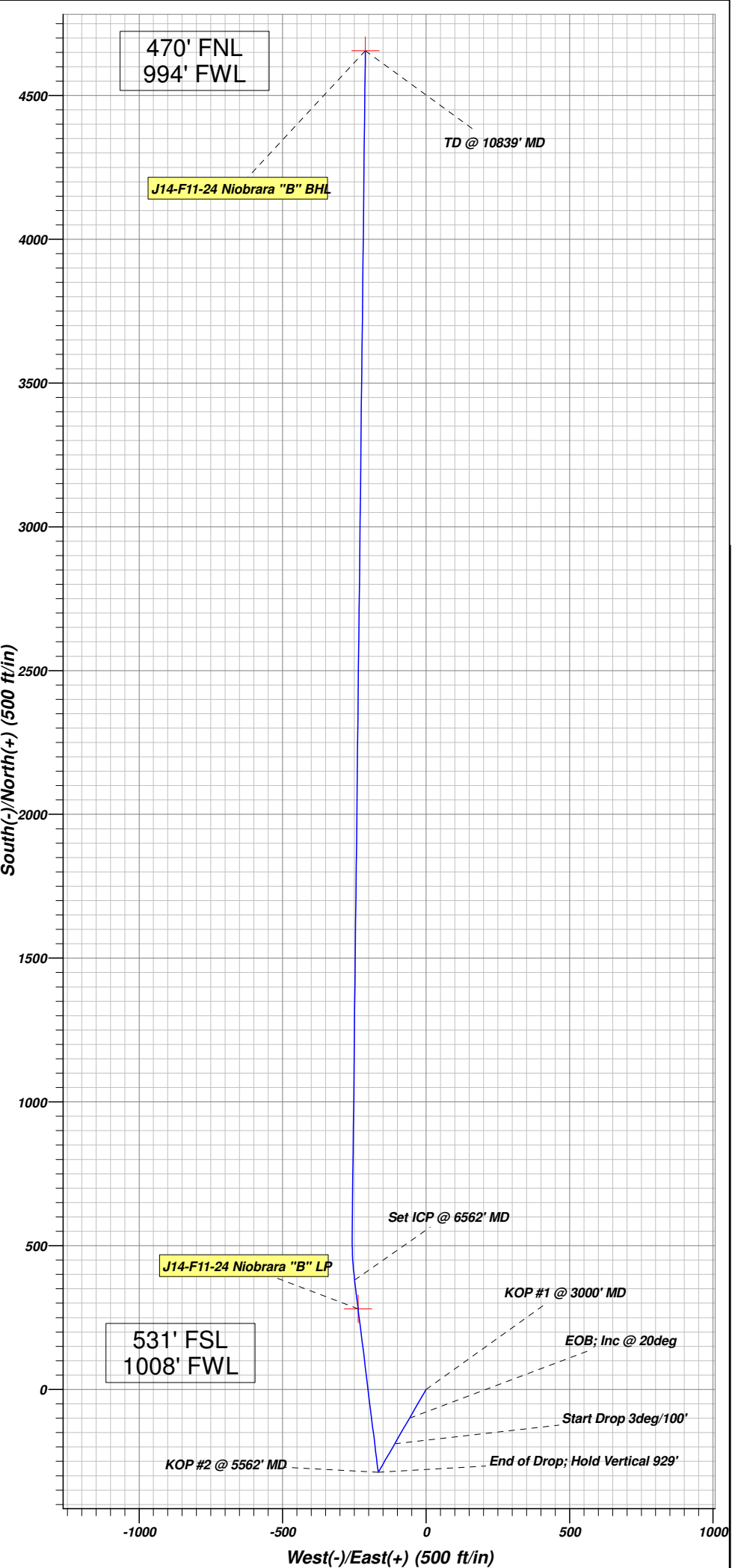
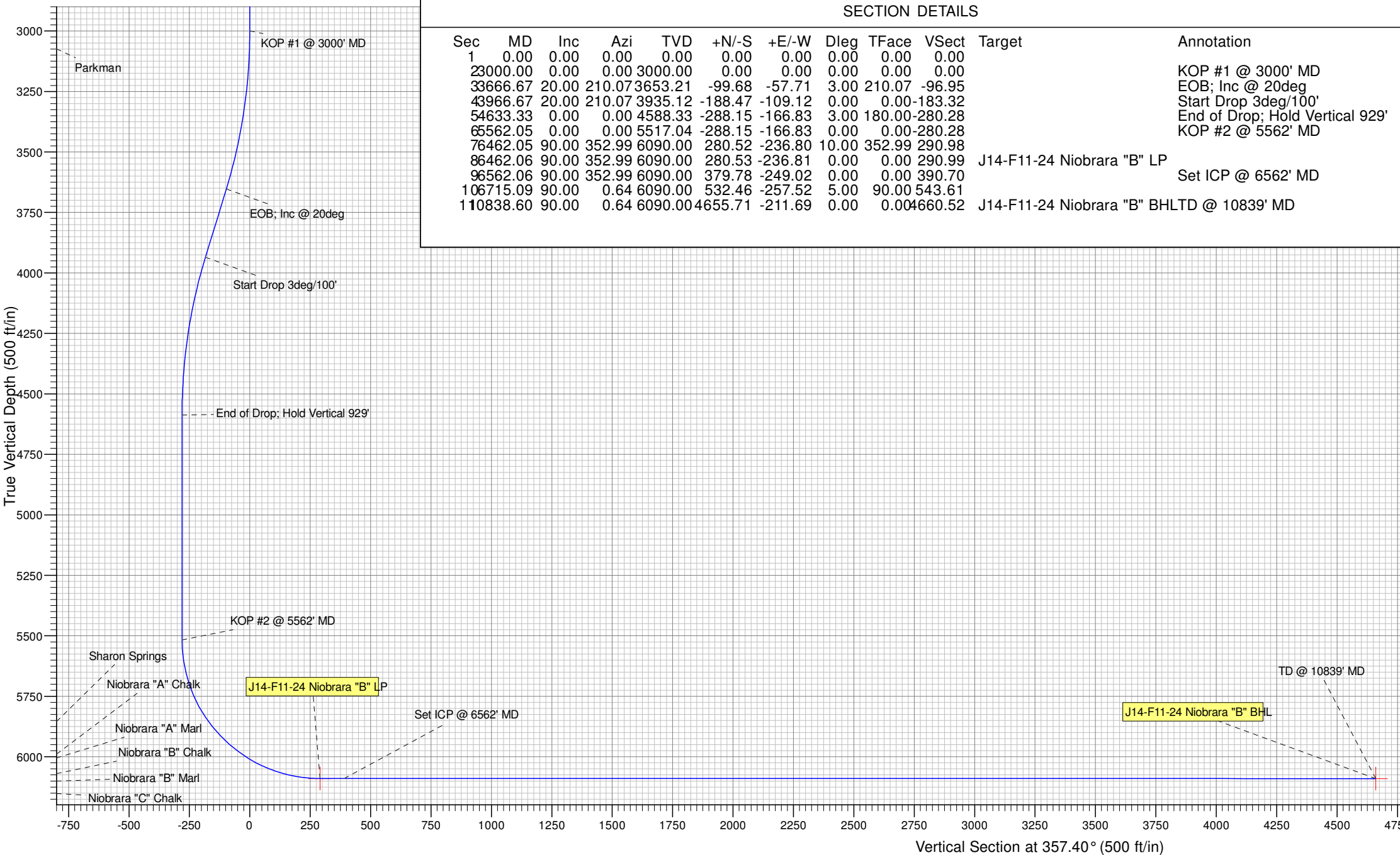


Azimuths to True North
Magnetic North: 8.39°

Magnetic Field
Strength: 53008.3snT
Dip Angle: 67.06°
Date: 1/9/2013
Model: IGRF2010

SECTION DETAILS

Sec	MD	Inc	Azi	TVD	+N/-S	+E/-W	Dleg	TFace	VSect	Target	Annotation
1	0.00	0.00	0.00	0.00	0.00	0.00	0.00	0.00	0.00		
	23000.00	0.00	0.00	3000.00	0.00	0.00	0.00	0.00	0.00		KOP #1 @ 3000' MD
	33666.67	20.00	210.07	3653.21	-99.68	-57.71	3.00	210.07	-96.95		EOB; Inc @ 20deg
	43966.67	20.00	210.07	3935.12	-188.47	-109.12	0.00	0.00	-183.32		Start Drop 3deg/100'
	54633.33	0.00	0.00	4588.33	-288.15	-166.83	3.00	180.00	-280.28		End of Drop; Hold Vertical 929'
	65562.05	0.00	0.00	5517.04	-288.15	-166.83	0.00	0.00	-280.28		KOP #2 @ 5562' MD
	76462.05	90.00	352.99	6090.00	280.52	-236.80	10.00	352.99	290.98		
	86462.06	90.00	352.99	6090.00	280.53	-236.81	0.00	0.00	290.99	J14-F11-24 Niobrara "B" LP	Set ICP @ 6562' MD
	96562.06	90.00	352.99	6090.00	379.78	-249.02	0.00	0.00	390.70		
	106715.09	90.00	0.64	6090.00	532.46	-257.52	5.00	90.00	543.61		
	110838.60	90.00	0.64	6090.00	4655.71	-211.69	0.00	0.00	4660.52	J14-F11-24 Niobrara "B" BHLTD @ 10839' MD	



Database:	EDM 5000.1 Single User Db	Local Co-ordinate Reference:	Well State Antelope J14-F11-24HNB
Company:	Bonanza Creek Energy Inc.	TVD Reference:	WELL @ 4574.00ft (Original Well Elev)
Project:	Weld, Co	MD Reference:	WELL @ 4574.00ft (Original Well Elev)
Site:	Sec 24-T5N-R62W	North Reference:	True
Well:	State Antelope J14-F11-24HNB	Survey Calculation Method:	Minimum Curvature
Wellbore:	Hz		
Design:	Plan #1		

Project	Weld, Co		
Map System:	US State Plane 1983	System Datum:	Mean Sea Level
Geo Datum:	North American Datum 1983		
Map Zone:	Colorado Northern Zone		

Site		Sec 24-T5N-R62W			
Site Position:		Northing:	1,383,322.81 ft	Latitude:	40.379160°N
From:	Lat/Long	Easting:	3,340,863.61 ft	Longitude:	104.276480°W
Position Uncertainty:	0.00 ft	Slot Radius:	13.200 in	Grid Convergence:	0.79 °

Well	State Antelope J14-F11-24HNB					
Well Position	+N/-S	0.00 ft	Northing:	1,383,322.80 ft	Latitude:	40.379160°N
	+E/-W	0.00 ft	Easting:	3,340,863.61 ft	Longitude:	104.276480°W
Position Uncertainty		0.00 ft	Wellhead Elevation:		Ground Level:	4,562.00 ft

Wellbore	Hz				
Magnetics	Model Name	Sample Date	Declination (°)	Dip Angle (°)	Field Strength (nT)
	IGRF2010	1/9/2013	8.39	67.06	53,008

Design	Plan #1			
Audit Notes:				
Version:	Phase:	PLAN	Tie On Depth:	0.00
Vertical Section:	Depth From (TVD) (ft)	+N/-S (ft)	+E/-W (ft)	Direction (°)
	0.00	0.00	0.00	357.40

Plan Sections										
Measured Depth (ft)	Inclination (°)	Azimuth (°)	Vertical Depth (ft)	+N/-S (ft)	+E/-W (ft)	Dogleg Rate (°/100ft)	Build Rate (°/100ft)	Turn Rate (°/100ft)	TFO (°)	Target
0.00	0.00	0.00	0.00	0.00	0.00	0.00	0.00	0.00	0.00	
3,000.00	0.00	0.00	3,000.00	0.00	0.00	0.00	0.00	0.00	0.00	
3,666.67	20.00	210.07	3,653.21	-99.68	-57.71	3.00	3.00	0.00	210.07	
3,966.67	20.00	210.07	3,935.12	-188.47	-109.12	0.00	0.00	0.00	0.00	
4,633.33	0.00	0.00	4,588.33	-288.15	-166.83	3.00	-3.00	0.00	180.00	
5,562.05	0.00	0.00	5,517.04	-288.15	-166.83	0.00	0.00	0.00	0.00	
6,462.05	90.00	352.99	6,090.00	280.52	-236.80	10.00	10.00	0.00	352.99	
6,462.06	90.00	352.99	6,090.00	280.53	-236.81	0.00	0.00	0.00	0.00	J14-F11-24 Niobrara '
6,562.06	90.00	352.99	6,090.00	379.78	-249.02	0.00	0.00	0.00	0.00	
6,715.09	90.00	0.64	6,090.00	532.46	-257.52	5.00	0.00	5.00	90.00	
10,838.60	90.00	0.64	6,090.00	4,655.71	-211.69	0.00	0.00	0.00	0.00	J14-F11-24 Niobrara '

Database:	EDM 5000.1 Single User Db	Local Co-ordinate Reference:	Well State Antelope J14-F11-24HNB
Company:	Bonanza Creek Energy Inc.	TVD Reference:	WELL @ 4574.00ft (Original Well Elev)
Project:	Weld, Co	MD Reference:	WELL @ 4574.00ft (Original Well Elev)
Site:	Sec 24-T5N-R62W	North Reference:	True
Well:	State Antelope J14-F11-24HNB	Survey Calculation Method:	Minimum Curvature
Wellbore:	Hz		
Design:	Plan #1		

Planned Survey									
Measured			Vertical			Map	Map		
Depth	Inclination	Azimuth	Depth	+N/-S	+E/-W	Northing	Easting	Latitude	Longitude
(ft)	(°)	(°)	(ft)	(ft)	(ft)	(ft)	(ft)		
3,000.00	0.00	0.00	3,000.00	0.00	0.00	1,383,322.80	3,340,863.61	40.379160°N	104.276480°W
KOP #1 @ 3000' MD									
3,074.02	2.22	210.07	3,074.00	-1.24	-0.72	1,383,321.55	3,340,862.91	40.379157°N	104.276483°W
Parkman									
3,100.00	3.00	210.07	3,099.95	-2.27	-1.31	1,383,320.52	3,340,862.33	40.379154°N	104.276485°W
3,200.00	6.00	210.07	3,199.63	-9.05	-5.24	1,383,313.68	3,340,858.50	40.379135°N	104.276499°W
3,300.00	9.00	210.07	3,298.77	-20.35	-11.78	1,383,302.30	3,340,852.11	40.379104°N	104.276523°W
3,400.00	12.00	210.07	3,397.08	-36.12	-20.91	1,383,286.40	3,340,843.20	40.379061°N	104.276555°W
3,500.00	15.00	210.07	3,494.31	-56.32	-32.61	1,383,266.04	3,340,831.79	40.379005°N	104.276597°W
3,600.00	18.00	210.07	3,590.18	-80.89	-46.84	1,383,241.27	3,340,817.90	40.378938°N	104.276648°W
3,666.67	20.00	210.07	3,653.21	-99.68	-57.71	1,383,222.34	3,340,807.28	40.378886°N	104.276687°W
EOB; Inc @ 20deg									
3,700.00	20.00	210.07	3,684.53	-109.54	-63.42	1,383,212.40	3,340,801.71	40.378859°N	104.276708°W
3,800.00	20.00	210.07	3,778.50	-139.14	-80.56	1,383,182.56	3,340,784.98	40.378778°N	104.276769°W
3,900.00	20.00	210.07	3,872.47	-168.74	-97.70	1,383,152.73	3,340,768.25	40.378697°N	104.276831°W
3,966.67	20.00	210.07	3,935.12	-188.47	-109.12	1,383,132.84	3,340,757.10	40.378643°N	104.276872°W
Start Drop 3deg/100'									
4,000.00	19.00	210.07	3,966.54	-198.10	-114.70	1,383,123.14	3,340,751.66	40.378616°N	104.276892°W
4,100.00	16.00	210.07	4,061.90	-224.12	-129.76	1,383,096.91	3,340,736.96	40.378545°N	104.276946°W
4,200.00	13.00	210.07	4,158.70	-245.79	-142.31	1,383,075.08	3,340,724.71	40.378485°N	104.276991°W
4,300.00	10.00	210.07	4,256.69	-263.04	-152.30	1,383,057.69	3,340,714.96	40.378438°N	104.277027°W
4,400.00	7.00	210.07	4,355.58	-275.83	-159.70	1,383,044.80	3,340,707.73	40.378403°N	104.277053°W
4,500.00	4.00	210.07	4,455.10	-284.12	-164.50	1,383,036.44	3,340,703.05	40.378380°N	104.277071°W
4,600.00	1.00	210.07	4,555.00	-287.90	-166.69	1,383,032.63	3,340,700.91	40.378370°N	104.277079°W
4,633.33	0.00	0.00	4,588.33	-288.15	-166.83	1,383,032.38	3,340,700.77	40.378369°N	104.277079°W
End of Drop; Hold Vertical 929'									
4,700.00	0.00	0.00	4,655.00	-288.15	-166.83	1,383,032.38	3,340,700.77	40.378369°N	104.277079°W
4,800.00	0.00	0.00	4,755.00	-288.15	-166.83	1,383,032.38	3,340,700.77	40.378369°N	104.277079°W
4,900.00	0.00	0.00	4,855.00	-288.15	-166.83	1,383,032.38	3,340,700.77	40.378369°N	104.277079°W
5,000.00	0.00	0.00	4,955.00	-288.15	-166.83	1,383,032.38	3,340,700.77	40.378369°N	104.277079°W
5,100.00	0.00	0.00	5,055.00	-288.15	-166.83	1,383,032.38	3,340,700.77	40.378369°N	104.277079°W
5,200.00	0.00	0.00	5,155.00	-288.15	-166.83	1,383,032.38	3,340,700.77	40.378369°N	104.277079°W
5,300.00	0.00	0.00	5,255.00	-288.15	-166.83	1,383,032.38	3,340,700.77	40.378369°N	104.277079°W
5,400.00	0.00	0.00	5,355.00	-288.15	-166.83	1,383,032.38	3,340,700.77	40.378369°N	104.277079°W
5,500.00	0.00	0.00	5,455.00	-288.15	-166.83	1,383,032.38	3,340,700.77	40.378369°N	104.277079°W
5,562.05	0.00	0.00	5,517.04	-288.15	-166.83	1,383,032.38	3,340,700.77	40.378369°N	104.277079°W
KOP #2 @ 5562' MD									
5,600.00	3.80	352.99	5,554.97	-286.90	-166.99	1,383,033.62	3,340,700.60	40.378373°N	104.277080°W
5,700.00	13.80	352.99	5,653.67	-271.75	-168.85	1,383,048.75	3,340,698.53	40.378414°N	104.277086°W
5,800.00	23.80	352.99	5,748.21	-239.81	-172.78	1,383,080.63	3,340,694.16	40.378502°N	104.277100°W
5,900.00	33.80	352.99	5,835.74	-192.06	-178.66	1,383,128.29	3,340,687.62	40.378633°N	104.277122°W
5,922.27	36.02	352.99	5,854.00	-179.41	-180.21	1,383,140.92	3,340,685.89	40.378668°N	104.277127°W
Sharon Springs									
6,000.00	43.80	352.99	5,913.58	-129.96	-186.30	1,383,190.29	3,340,679.13	40.378803°N	104.277149°W
6,100.00	53.80	352.99	5,979.37	-55.38	-195.47	1,383,264.73	3,340,668.92	40.379008°N	104.277182°W
6,116.64	55.46	352.99	5,989.00	-41.91	-197.13	1,383,278.17	3,340,667.08	40.379045°N	104.277188°W
Niobrara "A" Chalk									
6,145.96	58.39	352.99	6,005.00	-17.53	-200.13	1,383,302.51	3,340,663.74	40.379112°N	104.277199°W
Niobrara "A" Marl									
6,200.00	63.80	352.99	6,031.11	29.41	-205.91	1,383,349.37	3,340,657.32	40.379241°N	104.277219°W
6,300.00	73.80	352.99	6,067.24	121.82	-217.28	1,383,441.61	3,340,644.68	40.379494°N	104.277260°W
6,310.22	74.82	352.99	6,070.00	131.58	-218.48	1,383,451.36	3,340,643.34	40.379521°N	104.277264°W
Niobrara "B" Chalk									

Database:	EDM 5000.1 Single User Db	Local Co-ordinate Reference:	Well State Antelope J14-F11-24HNB
Company:	Bonanza Creek Energy Inc.	TVD Reference:	WELL @ 4574.00ft (Original Well Elev)
Project:	Weld, Co	MD Reference:	WELL @ 4574.00ft (Original Well Elev)
Site:	Sec 24-T5N-R62W	North Reference:	True
Well:	State Antelope J14-F11-24HNB	Survey Calculation Method:	Minimum Curvature
Wellbore:	Hz		
Design:	Plan #1		

Planned Survey

Measured Depth (ft)	Inclination (°)	Azimuth (°)	Vertical Depth (ft)	+N/-S (ft)	+E/-W (ft)	Map Northing (ft)	Map Easting (ft)	Latitude	Longitude
6,400.00	83.80	352.99	6,086.64	219.06	-229.24	1,383,538.68	3,340,631.37	40.379761°N	104.277303°W
6,462.05	90.00	352.99	6,090.00	280.52	-236.80	1,383,600.03	3,340,622.96	40.379930°N	104.277330°W
6,462.06	90.00	352.99	6,090.00	280.53	-236.81	1,383,600.04	3,340,622.96	40.379930°N	104.277330°W
6,500.00	90.00	352.99	6,090.00	318.19	-241.44	1,383,637.63	3,340,617.81	40.380034°N	104.277347°W
6,562.06	90.00	352.99	6,090.00	379.78	-249.02	1,383,699.12	3,340,609.38	40.380203°N	104.277374°W
Set ICP @ 6562' MD									
6,600.00	90.00	354.88	6,090.00	417.51	-253.03	1,383,736.78	3,340,604.85	40.380306°N	104.277389°W
6,700.00	90.00	359.88	6,090.00	517.37	-257.59	1,383,836.57	3,340,598.91	40.380580°N	104.277405°W
6,715.09	90.00	0.64	6,090.00	532.46	-257.52	1,383,851.66	3,340,598.77	40.380622°N	104.277405°W
6,800.00	90.00	0.64	6,090.00	617.37	-256.58	1,383,936.57	3,340,598.54	40.380855°N	104.277401°W
6,900.00	90.00	0.64	6,090.00	717.36	-255.47	1,384,036.57	3,340,598.27	40.381129°N	104.277397°W
7,000.00	90.00	0.64	6,090.00	817.35	-254.36	1,384,136.57	3,340,598.00	40.381404°N	104.277393°W
7,100.00	90.00	0.64	6,090.00	917.35	-253.25	1,384,236.57	3,340,597.73	40.381678°N	104.277389°W
7,200.00	90.00	0.64	6,090.00	1,017.34	-252.14	1,384,336.57	3,340,597.47	40.381953°N	104.277385°W
7,300.00	90.00	0.64	6,090.00	1,117.34	-251.02	1,384,436.57	3,340,597.20	40.382227°N	104.277381°W
7,400.00	90.00	0.64	6,090.00	1,217.33	-249.91	1,384,536.57	3,340,596.93	40.382502°N	104.277377°W
7,500.00	90.00	0.64	6,090.00	1,317.32	-248.80	1,384,636.57	3,340,596.66	40.382776°N	104.277373°W
7,600.00	90.00	0.64	6,090.00	1,417.32	-247.69	1,384,736.57	3,340,596.39	40.383051°N	104.277369°W
7,700.00	90.00	0.64	6,090.00	1,517.31	-246.58	1,384,836.57	3,340,596.12	40.383325°N	104.277365°W
7,800.00	90.00	0.64	6,090.00	1,617.31	-245.47	1,384,936.57	3,340,595.86	40.383600°N	104.277361°W
7,900.00	90.00	0.64	6,090.00	1,717.30	-244.35	1,385,036.57	3,340,595.59	40.383874°N	104.277357°W
8,000.00	90.00	0.64	6,090.00	1,817.29	-243.24	1,385,136.57	3,340,595.32	40.384149°N	104.277353°W
8,100.00	90.00	0.64	6,090.00	1,917.29	-242.13	1,385,236.57	3,340,595.05	40.384423°N	104.277349°W
8,200.00	90.00	0.64	6,090.00	2,017.28	-241.02	1,385,336.57	3,340,594.78	40.384698°N	104.277345°W
8,300.00	90.00	0.64	6,090.00	2,117.27	-239.91	1,385,436.57	3,340,594.52	40.384972°N	104.277341°W
8,400.00	90.00	0.64	6,090.00	2,217.27	-238.80	1,385,536.57	3,340,594.25	40.385247°N	104.277337°W
8,500.00	90.00	0.64	6,090.00	2,317.26	-237.69	1,385,636.57	3,340,593.98	40.385521°N	104.277333°W
8,600.00	90.00	0.64	6,090.00	2,417.26	-236.57	1,385,736.57	3,340,593.71	40.385795°N	104.277330°W
8,700.00	90.00	0.64	6,090.00	2,517.25	-235.46	1,385,836.57	3,340,593.44	40.386070°N	104.277326°W
8,800.00	90.00	0.64	6,090.00	2,617.24	-234.35	1,385,936.57	3,340,593.17	40.386344°N	104.277322°W
8,900.00	90.00	0.64	6,090.00	2,717.24	-233.24	1,386,036.57	3,340,592.91	40.386619°N	104.277318°W
9,000.00	90.00	0.64	6,090.00	2,817.23	-232.13	1,386,136.56	3,340,592.64	40.386893°N	104.277314°W
9,100.00	90.00	0.64	6,090.00	2,917.22	-231.02	1,386,236.56	3,340,592.37	40.387168°N	104.277310°W
9,200.00	90.00	0.64	6,090.00	3,017.22	-229.91	1,386,336.56	3,340,592.10	40.387442°N	104.277306°W
9,300.00	90.00	0.64	6,090.00	3,117.21	-228.79	1,386,436.56	3,340,591.83	40.387717°N	104.277302°W
9,400.00	90.00	0.64	6,090.00	3,217.21	-227.68	1,386,536.56	3,340,591.56	40.387991°N	104.277298°W
9,500.00	90.00	0.64	6,090.00	3,317.20	-226.57	1,386,636.56	3,340,591.30	40.388266°N	104.277294°W
9,600.00	90.00	0.64	6,090.00	3,417.19	-225.46	1,386,736.56	3,340,591.03	40.388540°N	104.277290°W
9,700.00	90.00	0.64	6,090.00	3,517.19	-224.35	1,386,836.56	3,340,590.76	40.388815°N	104.277286°W
9,800.00	90.00	0.64	6,090.00	3,617.18	-223.24	1,386,936.56	3,340,590.49	40.389089°N	104.277282°W
9,900.00	90.00	0.64	6,090.00	3,717.18	-222.13	1,387,036.56	3,340,590.22	40.389364°N	104.277278°W
10,000.00	90.00	0.64	6,090.00	3,817.17	-221.01	1,387,136.56	3,340,589.95	40.389638°N	104.277274°W
10,100.00	90.00	0.64	6,090.00	3,917.16	-219.90	1,387,236.56	3,340,589.69	40.389913°N	104.277270°W
10,200.00	90.00	0.64	6,090.00	4,017.16	-218.79	1,387,336.56	3,340,589.42	40.390187°N	104.277266°W
10,300.00	90.00	0.64	6,090.00	4,117.15	-217.68	1,387,436.56	3,340,589.15	40.390462°N	104.277262°W
10,400.00	90.00	0.64	6,090.00	4,217.14	-216.57	1,387,536.56	3,340,588.88	40.390736°N	104.277258°W
10,500.00	90.00	0.64	6,090.00	4,317.14	-215.46	1,387,636.56	3,340,588.61	40.391011°N	104.277254°W
10,600.00	90.00	0.64	6,090.00	4,417.13	-214.35	1,387,736.56	3,340,588.34	40.391285°N	104.277250°W
10,700.00	90.00	0.64	6,090.00	4,517.13	-213.23	1,387,836.56	3,340,588.08	40.391560°N	104.277246°W
10,800.00	90.00	0.64	6,090.00	4,617.12	-212.12	1,387,936.56	3,340,587.81	40.391834°N	104.277242°W
10,838.60	90.00	0.64	6,090.00	4,655.71	-211.69	1,387,975.15	3,340,587.70	40.391940°N	104.277240°W
TD @ 10839' MD									

Database:	EDM 5000.1 Single User Db	Local Co-ordinate Reference:	Well State Antelope J14-F11-24HNB
Company:	Bonanza Creek Energy Inc.	TVD Reference:	WELL @ 4574.00ft (Original Well Elev)
Project:	Weld, Co	MD Reference:	WELL @ 4574.00ft (Original Well Elev)
Site:	Sec 24-T5N-R62W	North Reference:	True
Well:	State Antelope J14-F11-24HNB	Survey Calculation Method:	Minimum Curvature
Wellbore:	Hz		
Design:	Plan #1		

Design Targets									
Target Name - hit/miss target - Shape	Dip Angle (°)	Dip Dir. (°)	TVD (ft)	+N/-S (ft)	+E/-W (ft)	Northing (ft)	Easting (ft)	Latitude	Longitude
J14-F11-24 Niobrara "B" - plan hits target center - Point	0.00	0.00	6,090.00	4,655.71	-211.69	1,387,975.15	3,340,587.70	40.391940°N	104.277240°W
J14-F11-24 Niobrara "B" - plan hits target center - Point	0.00	0.00	6,090.00	280.51	-236.80	1,383,600.02	3,340,622.96	40.379930°N	104.277330°W

Formations					
Measured Depth (ft)	Vertical Depth (ft)	Name	Lithology	Dip (°)	Dip Direction (°)
3,074.02	3,074.00	Parkman		0.00	
5,922.27	5,854.00	Sharon Springs		0.00	
6,116.64	5,989.00	Niobrara "A" Chalk		0.00	
6,145.96	6,005.00	Niobrara "A" Marl		0.00	
6,310.22	6,070.00	Niobrara "B" Chalk		0.00	

Plan Annotations				
Measured Depth (ft)	Vertical Depth (ft)	Local Coordinates		Comment
		+N/-S (ft)	+E/-W (ft)	
3,000.00	3,000.00	0.00	0.00	KOP #1 @ 3000' MD
3,666.67	3,653.21	-99.68	-57.71	EOB; Inc @ 20deg
3,966.67	3,935.12	-188.47	-109.12	Start Drop 3deg/100'
4,633.33	4,588.33	-288.15	-166.83	End of Drop; Hold Vertical 929'
5,562.05	5,517.04	-288.15	-166.83	KOP #2 @ 5562' MD
6,562.06	6,090.00	379.78	-249.02	Set ICP @ 6562' MD
10,838.60	6,090.00	4,655.71	-211.69	TD @ 10839' MD