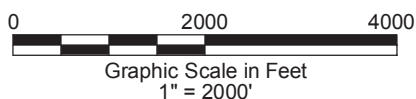
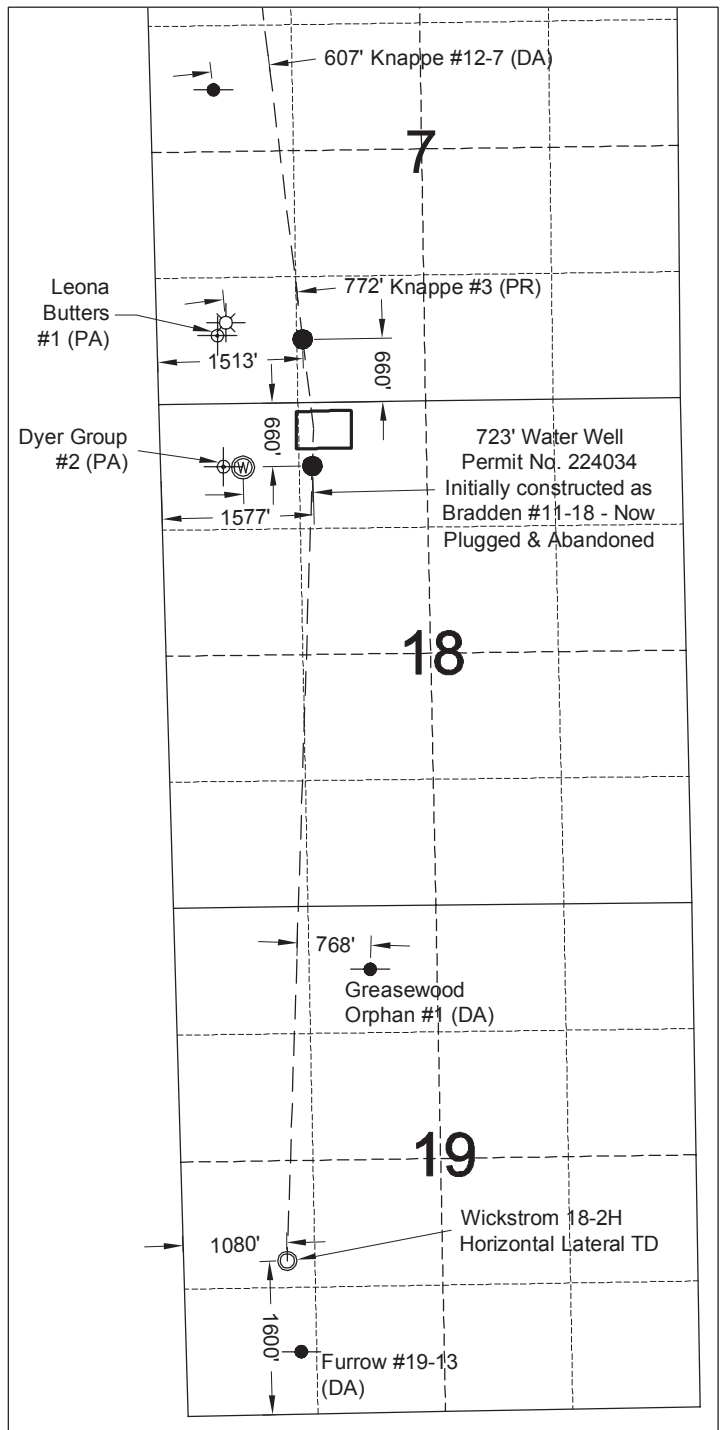


DWG: G:\GEOSURV\WeldzNorth\STXRA 112001\Wellplats\Wickstrom 18-1H, 18-2H\Wickstrom 18-1H, 18-2H F2A R1.dwg USER: MTC DATE: Feb 15, 2013 12:09pm



- Location Per COGCC. Not field located.
- Landing Point
- Horizontal Lateral TD

2/15/13



LAND SURVEYING AND MAPPING
LAFAYETTE - WINTER PARK
Ph 303 666 0379 Fx 303 665 6320

CONDOR ENERGY TECHNOLOGY LLC
WICKSTROM 18-1H PAD

NE1/4 NW1/4 SECTION 18 T6N R60W
6th PM MORGAN COUNTY COLORADO