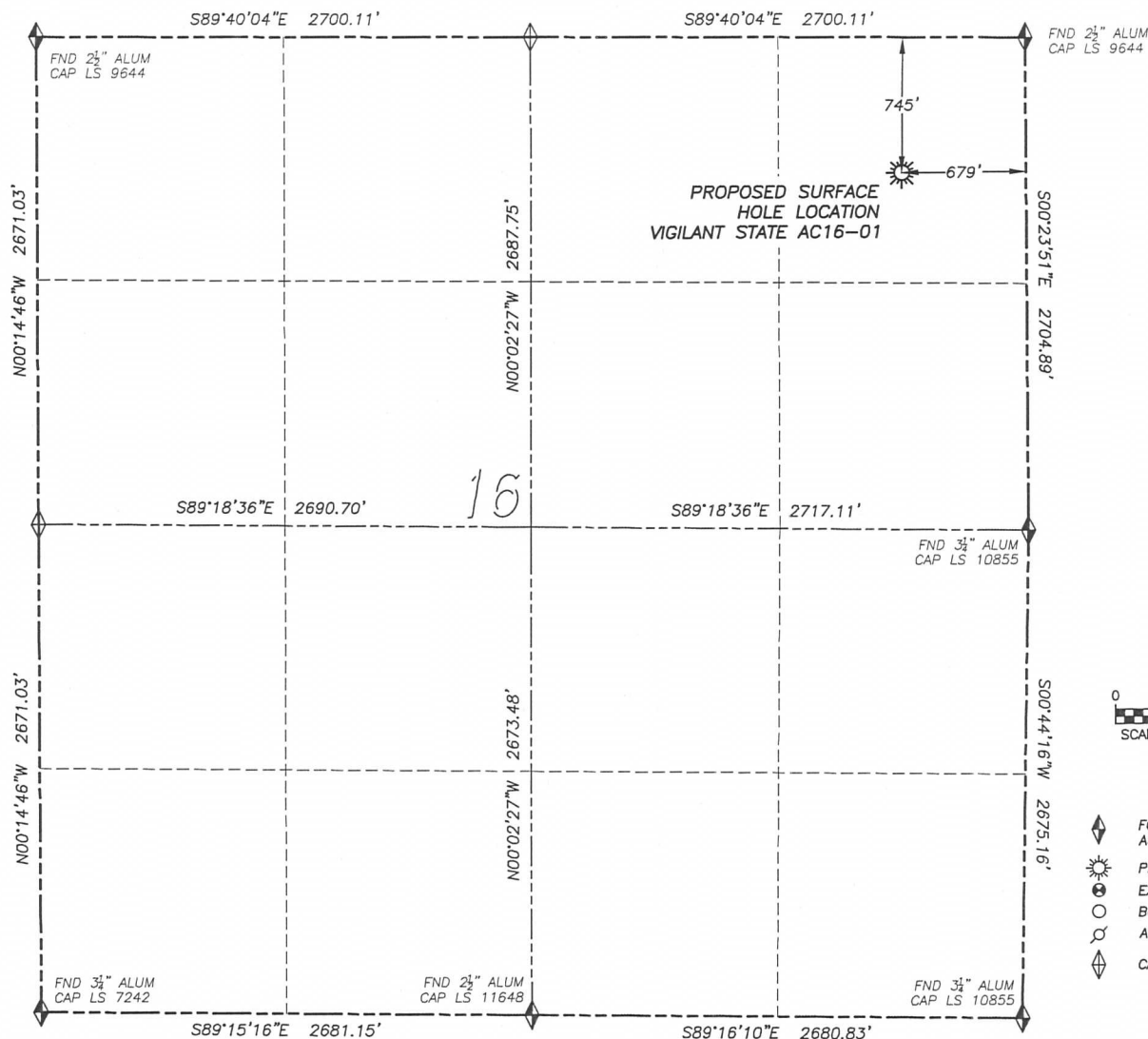


WELL LOCATION CERTIFICATE

VIGILANT STATE AC16-01

SECTION 16, TOWNSHIP 7 NORTH, RANGE 63 WEST OF THE 6TH PRINCIPAL MERIDIAN



0 500 1000
SCALE: 1" = 1000'

LEGEND

- ◆ FOUND MONUMENT AS DESCRIBED
- ☀ PROPOSED WELL
- EXISTING WELL
- BOTTOM HOLE
- ⊗ ABANDONED WELL
- ◇ CALCULATED POSITION

NAD 83 LATITUDE AND LONGITUDE

VIGILANT STATE AC16-01

SURFACE HOLE:

LATITUDE: N40.57937°
 LONGITUDE: W104.43436°
 ELEVATION: 4866'
 FOOTAGE: 745' FNL, 679' FEL
 PDOP: 1.3
 QTR/QTR: NE4/NE4
 PROP LINE: 679'± EAST

NEAREST EXISTING WELL:
 THERE ARE NO EXISTING
 WELLS IN THIS SECTION

IN ACCORDANCE WITH A REQUEST FROM GREG WILSON OF NOBLE ENERGY INC., DALEY LAND SURVEYING, INC. HAS DETERMINED THE SURFACE LOCATION OF THE VIGILANT STATE AC16-01 WELL TO BE 745' FNL, 679' FEL, AS MEASURED AT NINETY (90) DEGREES FROM THE SECTION LINES OF SECTION 16, TOWNSHIP 7 NORTH, RANGE 63 WEST OF THE 6TH PRINCIPAL MERIDIAN, WELD COUNTY, COLORADO.

I HEREBY CERTIFY THAT THIS WELL LOCATION CERTIFICATE WAS PREPARED BY ME OR UNDER MY DIRECT SUPERVISION, THAT THE WORK WAS COMPLETED ON 2/14/2013 FOR AND ON BEHALF OF NOBLE ENERGY, INC., AND THAT THIS MAP DOES NOT REPRESENT A BOUNDARY SURVEY, IT IS NOT A LAND SURVEY PLAT OR AN IMPROVEMENT SURVEY PLAT AND IT IS NOT TO BE RELIED UPON FOR THE ESTABLISHMENT OF FENCE, BUILDING OR OTHER FUTURE IMPROVEMENT LINES.

NOTES:

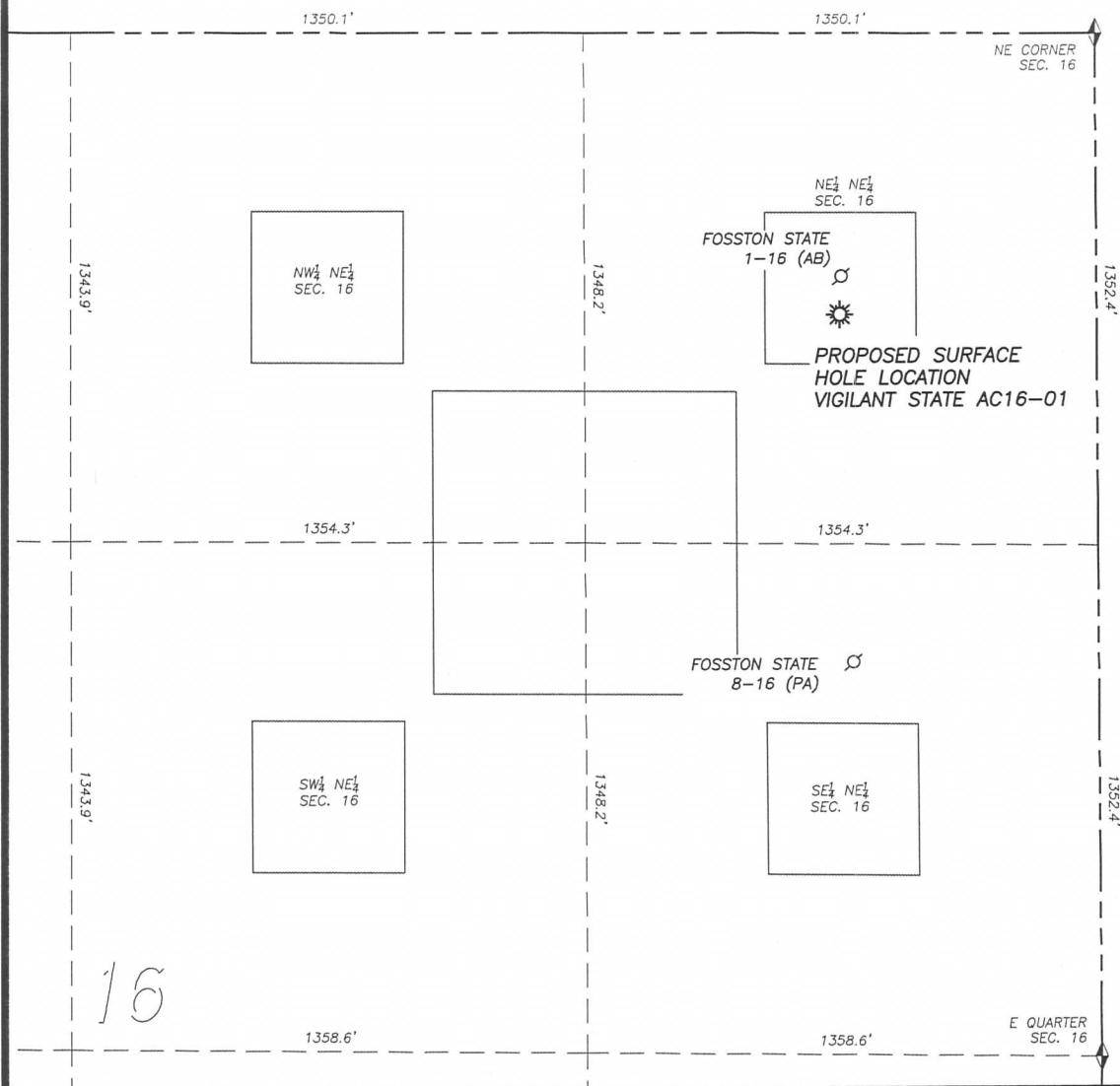
- 1) BEARINGS FOR THIS MAP ARE ASSUMED AND BASED UPON GPS OBSERVATIONS MADE BETWEEN MONUMENTS LOCATED AT THE NORTHEAST CORNER AND EAST QUARTER CORNER OF SECTION 16, T.7N., R.63W.
- 2) HORIZONTAL DATUM IS NAD83.
- 3) VERTICAL DATUM IS NAVD88 AND ORIGINATES FROM THE LOCAL C.O.R.S. NETWORK, UTILIZING THE GEOID09 MODEL.
- 4) SEE LOCATION DRAWING FOR VISIBLE IMPROVEMENTS WITHIN 400' OF PROPOSED DISTURBED AREA.
- 5) SURFACE USE: RANGELAND.



FOR AND ON BEHALF OF
 DALEY LAND SURVEYING INC.,
 Robert Daley, PLS 35597

SITE SKETCH VIGILANT STATE AC16-01

SECTION 16, TOWNSHIP 7 NORTH, RANGE 63 WEST OF THE 6TH PRINCIPAL MERIDIAN



LOCATION FOR THE AB AND PA WELLS WAS
DETERMINED WITH THE AID OF NOBLE ENERGY STAFF.

	Well Name	Qtr - Qtr	Footage		Latitude	Longitude	Elevation	PDOP
1	FOSSTON STATE 1-16 (AB)	NE NE	645' FNL	675' FEL	40.57964	-104.43435	4866	1.1
2	FOSSTON STATE 8-16 (PA)	SE NE	1664' FNL	648' FEL	40.57685	-104.43423	4880	1.3

NOTES:

1. THIS DOES NOT REPRESENT A BOUNDARY SURVEY
2. HORIZONTAL DATUM IS NAD83
3. VERTICAL DATUM IS NAVD88 AND ORIGINATES FROM THE LOCAL C.O.R.S. NETWORK, UTILIZING THE GEOID09 MODEL.