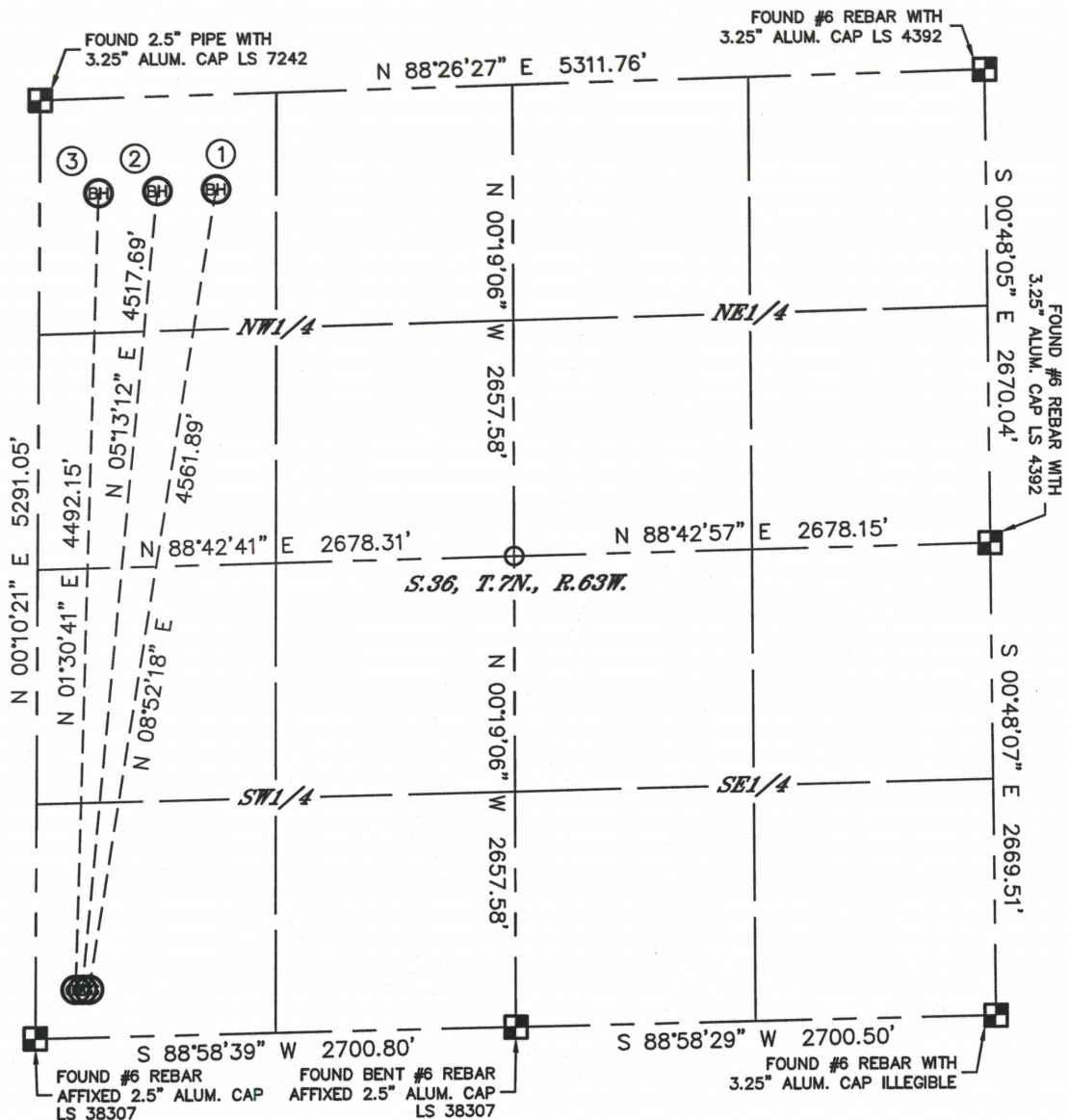


# MULTI-WELL PLAN

CROW CREEK STATE AC36-78-1HN PAD  
THIS MAP DOES NOT REPRESENT A BOUNDARY SURVEY

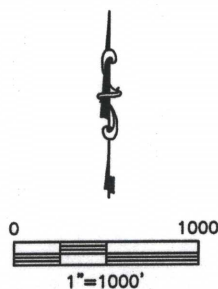
SECTION: 36  
TOWNSHIP: 7N  
RANGE: 63W



- |  |  |  |
|--|--|--|
| <p>①</p> <p>—BOTTOM HOLE—<br/>CROW CREEK STATE<br/>AC36-78-1HN<br/>535' FNL<br/>990' FWL<br/>LAT: 40.53591°N<br/>LONG: 104.39044°W</p> | <p>②</p> <p>—BOTTOM HOLE—<br/>CROW CREEK STATE<br/>AC36-78HN<br/>535' FNL<br/>660' FWL<br/>LAT: 40.53589°N<br/>LONG: 104.39162°W</p> | <p>③</p> <p>—BOTTOM HOLE—<br/>CROW CREEK STATE<br/>AC36-79-1HN<br/>535' FNL<br/>330' FWL<br/>LAT: 40.53588°N<br/>LONG: 104.39281°W</p> |
|--|--|--|

## LEGEND

- = ALIQUOT MONUMENT AS DESCRIBED
- = CALCULATED POSITION



DATE: 11/12/2012  
PROJECT#: 2012141



## MULTI-WELL PLAN

CROW CREEK STATE AC36-78-1HN PAD

SECTION: 36  
TOWNSHIP: 7N  
RANGE: 63W

