



---

**Corporate Office**

1775 Sherman Street, #3000  
Denver, Colorado 80203  
303.860.5800  
www.pdce.com

Department of Natural Resources  
Oil and Gas Conservation Commission  
The Chancery Building  
Attn: Matt Lepore  
1120 Lincoln St., Suite 801  
Denver, CO 80203

Re: **30 Day Certification Letter – Rule 318Ae**  
Sorin Natural Resources 2R-223  
NWNE Sec 2-T4N-R66W, 6<sup>th</sup> PM  
Weld County, Colorado

Dear Director,

PDC Energy, Inc. ("PDC") hereby certifies to the Director that a thirty (30-day) notice has been given by certified mail to all owners in the proposed wellbore spacing unit consisting of the E2E2 of Sec 2 in T4N R66W, 160 acres. We have not received any objections to such well location or proposed spacing unit, therefore PDC hereby requests the Director to approve the well.

If you should have any questions or concerns regarding this permit, please contact the undersigned at (303) 860-5800.

Sincerely,

A handwritten signature in blue ink, appearing to read "Liz Lindow".

Liz Lindow  
Regulatory Analyst  
PDC Energy

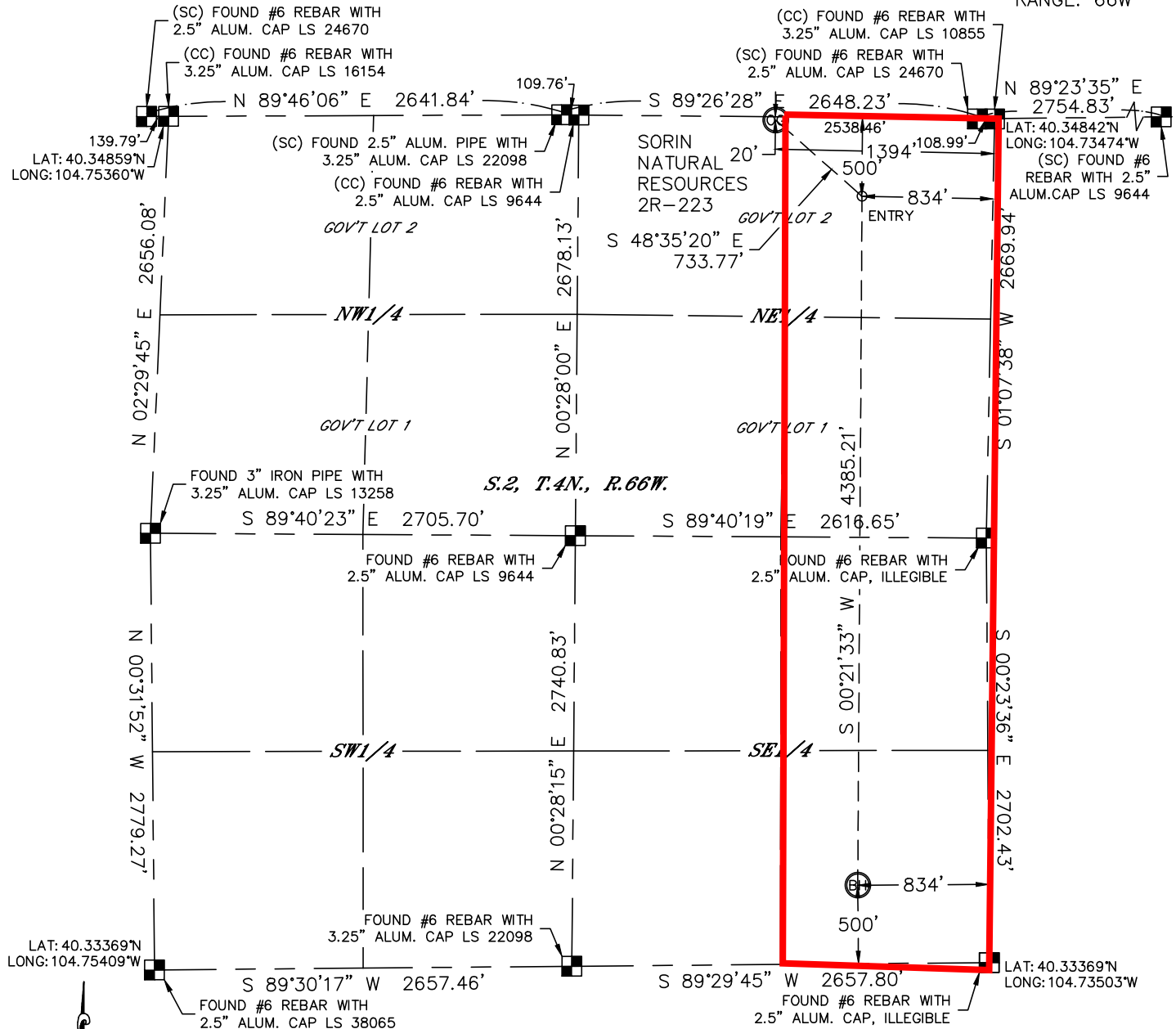


Lat40°, Inc. 1635 Foxtrail Drive, Suite 325 Loveland, CO 970-776-3321

# WELL LOCATION CERTIFICATE

THIS MAP DOES NOT REPRESENT A BOUNDARY SURVEY

SECTION: 2  
TOWNSHIP: 4N  
RANGE: 66W



In accordance with a request from Jeff Dillingham with PDC ENERGY Lat40°, Inc. has determined the surface location of the SORIN NATURAL RESOURCES 2R-223 to be 20' from the NORTH line and 1394' from the EAST line and the bottom hole to be 500' from the SOUTH line and 834' from the EAST line as measured at right angles from the section lines of Section 2, Township 4 North, Range 66 West of the Sixth Principal Meridian, County of Weld, State of Colorado.

I hereby state that this Well Location Certificate was prepared by me, or under my direct supervision, that the fieldwork was completed on 11/21/2012, for and on behalf of PDC ENERGY That this is not a Land Survey Plat or an Improvement Survey Plat, and that it is not to be relied upon for establishment of fence, building, or other future improvement lines.

## NOTE:

- 1) Bearings shown are Grid Bearings of the Colorado State Plane Coordinate System, North Zone, North American Datum 1983/2007. The lineal dimensions as contained herein are based upon the "U.S. Survey Foot."
- 2) Ground elevations are based on an observed GPS elevation (NAVD 1988 DATUM).
- 3) IMPROVEMENTS: See LOCATION DRAWING for all visible improvements within 400' of disturbed area.
- 4) SURFACE USE: CROP LAND
- 5) INSTRUMENT OPERATOR: BRIAN ROTTINGHAUS

## NOTE

According to Colorado law, you must commence any legal action based upon any defect in this W.L.C. within three years after you discover such defect. In no event, may any action based upon any defect in this survey be commenced more than ten years after the date of the certificate shown hereon. (13-80-105 C.R.S.)

## LEGEND

- = ALIQUOT MONUMENT AS DESCRIBED
- = CALCULATED POSITION

## SURFACE LOCATION

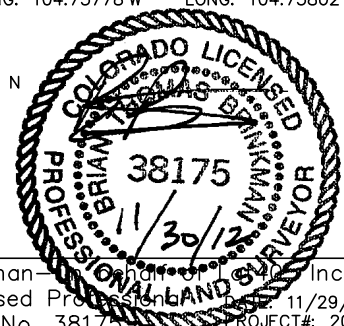
LAT: 40.34844°N  
LONG: 104.73974°W  
PDOP: 1.8  
ELEV: 4671'  
1/4, 1/4: NW1/4NE1/4  
NEAREST PROPERTY LINE: 20' N

## ENTRY POINT

LAT: 40.34709°N  
LONG: 104.73778°W

## BOTTOM HOLE

LAT: 40.33506°N  
LONG: 104.73802°W



Brian T. Brinkman—  
Colorado Licensed Professional Surveyor  
Land Surveyor No. 38175  
PROJECT#: 2012164