

**HALLIBURTON**

---

# **WPX ENERGY ROCKY MOUNTAIN LLC-EBUS**

---

**RGU 34-36-198  
SULPHUR CREEK  
Rio Blanco County , Colorado**

## **Cement Multiple Stages**

**20-Oct-2012**

## **Post Job Report**

*The Road to Excellence Starts with Safety*

Sold To #: 300721	Ship To #: 2952364	Quote #:	Sales Order #: 9826976
Customer: WPX ENERGY ROCKY MOUNTAIN LLC-EBUS	Customer Rep: Ragsdale, Ted		
Well Name: RGU	Well #: 34-36-198	API/UWI #: 05-103-11929	
Field: SULPHUR CREEK	City (SAP): MEEKER	County/Parish: Rio Blanco	State: Colorado
Lat: N 39.916 deg. OR N 39 deg. 54 min. 58.079 secs.	Long: W 108.34 deg. OR W -109 deg. 39 min. 36.605 secs.		
Contractor: CYCLONE 29	Rig/Platform Name/Num: CYCLONE 29		
Job Purpose: Cement Multiple Stages			
Well Type: Development Well	Job Type: Cement Multiple Stages		
Sales Person: MAYO, MARK	Srv Supervisor: KUKUS, CHRISTOPHER	MBU ID Emp #: 413952	

**Job Personnel**

HES Emp Name	Exp Hrs	Emp #	HES Emp Name	Exp Hrs	Emp #	HES Emp Name	Exp Hrs	Emp #
GOWEN, WESLEY M	0.0	496205	KUKUS, CHRISTOPHER A	0.0	413952	RAMSEY, STANTON Michael	0.0	477609
ROMKEE, DALE Alan	0.0	488215						

**Equipment**

HES Unit #	Distance-1 way	HES Unit #	Distance-1 way	HES Unit #	Distance-1 way	HES Unit #	Distance-1 way
10565341	30 mile	10567589C	30 mile	10938657	30 mile	10973565	30 mile
10973571	30 mile	11583931	30 mile	11808829	30 mile		

**Job Hours**

Date	On Location Hours	Operating Hours	Date	On Location Hours	Operating Hours	Date	On Location Hours	Operating Hours
TOTAL								

Total is the sum of each column separately

Job				Job Times			
Formation Name	Formation Depth (MD)	Top	Bottom	Called Out	Date	Time	Time Zone
Form Type			BHST	On Location	19 - Oct - 2012	11:00	MST
Job depth MD	3645. ft		Job Depth TVD	Job Started	19 - Oct - 2012	16:30	MST
Water Depth			Wk Ht Above Floor	Job Completed	20 - Oct - 2012	03:33	MST
Perforation Depth (MD)	From	To		Job Completed	20 - Oct - 2012	07:07	MST
				Departed Loc	20 - Oct - 2012	08:30	MST

**Well Data**

Description	New / Used	Max pressure psig	Size in	ID in	Weight lbm/ft	Thread	Grade	Top MD ft	Bottom MD ft	Top TVD ft	Bottom TVD ft
-------------	------------	-------------------	---------	-------	---------------	--------	-------	-----------	--------------	------------	---------------

**Tools and Accessories**

Type	Size	Qty	Make	Depth	Type	Size	Qty	Make	Depth	Type	Size	Qty	Make
Guide Shoe					Packer					Top Plug			
Float Shoe					Bridge Plug					Bottom Plug			
Float Collar					Retainer					SSR plug set			
Insert Float										Plug Container			
Stage Tool										Centralizers			

**Miscellaneous Materials**

Gelling Agt	Conc	Surfactant	Conc	Acid Type	Qty	Conc	%
Treatment Fld	Conc	Inhibitor	Conc	Sand Type	Size	Qty	

**Fluid Data**

Stage/Plug #: 1									
Fluid #	Stage Type	Fluid Name	Qty	Qty uom	Mixing Density lbm/gal	Yield ft3/sk	Mix Fluid Gal/sk	Rate bbl/min	Total Mix Fluid Gal/sk

Stage/Plug #: 1									
Fluid #	Stage Type	Fluid Name	Qty	Qty uom	Mixing Density lbm/gal	Yield ft3/sk	Mix Fluid Gal/sk	Rate bbl/min	Total Mix Fluid Gal/sk

Stage/Plug #: 1									
1	Fresh Water Spacer		40.00	bbl	8.33	.0	.0	.0	
2	1st Stage Lead Cement	VERSACEM (TM) SYSTEM (452010)	650.0	sacks	12.8	1.77	9.34		9.34
3	1st Stage Tail Cement	VERSACEM (TM) SYSTEM (452010)	200.0	sacks	12.8	1.96	10.95		10.95
10.95 Gal		FRESH WATER							
4	Displacement		278.00	bbl	8.33	.0	.0	.0	
5	Fresh Water Spacer		20.00	bbl	8.33	.0	.0	.0	
6	2nd Stage TAIL	VERSACEM (TM) SYSTEM (452010)	705.0	sacks	12.8	1.96	10.95		10.95
10.95 Gal		FRESH WATER							
7	Displacement		121.00	bbl	8.33	.0	.0	.0	
Calculated Values		Pressures		Volumes					
Displacement		Shut In: Instant		Lost Returns		Cement Slurry		Pad	
Top Of Cement		5 Min		Cement Returns		Actual Displacement		Treatment	
Frac Gradient		15 Min		Spacers		Load and Breakdown		Total Job	
Rates									
Circulating		Mixing		Displacement		Avg. Job			
Cement Left In Pipe	Amount	0 ft	Reason	Shoe Joint					
Frac Ring # 1 @	ID	Frac ring # 2 @	ID	Frac Ring # 3 @	ID	Frac Ring # 4 @	ID		
The Information Stated Herein Is Correct				Customer Representative Signature					



*The Road to Excellence Starts with Safety*

Sold To #: 300721		Ship To #: 2952364		Quote #:		Sales Order #: 9826976	
Customer: WPX ENERGY ROCKY MOUNTAIN LLC-EBUS				Customer Rep: Ragsdale, Ted			
Well Name: RGU			Well #: 34-36-198			API/UWI #: 05-103-11929	
Field: SULPHUR CREEK		City (SAP): MEEKER		County/Parish: Rio Blanco		State: Colorado	
Legal Description:							
Lat: N 39.916 deg. OR N 39 deg. 54 min. 58.079 secs.				Long: W 108.34 deg. OR W -109 deg. 39 min. 36.605 secs.			
Contractor: CYCLONE 29			Rig/Platform Name/Num: CYCLONE 29				
Job Purpose: Cement Multiple Stages					Ticket Amount:		
Well Type: Development Well			Job Type: Cement Multiple Stages				
Sales Person: MAYO, MARK			Srv Supervisor: KUKUS, CHRISTOPHER			MBU ID Emp #: 413952	

Activity Description	Date/Time	Cht #	Rate bbl/min	Volume bbl		Pressure psig		Comments
				Stage	Total	Tubing	Casing	
Call Out	10/19/2012 11:00							ELITE # 3
Depart Yard Safety Meeting	10/19/2012 13:30							ALL HES EMPLOYEES
Arrive At Loc	10/19/2012 16:30							RIG PULLING PIPE HES CREW ARRIVED 1 1/2 HOURS EARLY DID NOT START CHARGE HOURS TILL ON LOCATION TIME HES CREW SPOTTED TRUCKS AND RIGGED UP
Assessment Of Location Safety Meeting	10/19/2012 16:35							ALL HES EMPLOYEES
Pre-Rig Up Safety Meeting	10/19/2012 16:40							ALL HES EMPLOYEES
Rig-Up Equipment	10/19/2012 16:45							1 F-550 PICKUP 1 HT-400 PUMP TRUCK 2 SILO 1 660 BULK TRUCK
Pre-Job Safety Meeting	10/20/2012 03:10							ALL HES EMPLOYEES AND RIG CREW
Start Job	10/20/2012 03:33							TD: 3645 TP: 3639.15 SJ: 25.57 CSG: 9 5/8 36# J-55 OH: 14 3/8 TO 1520 13 1/2 TO TD MUD WT 9.1 STAGE TOOL@ 1570.6 TOOL OPEN PSI @ 500-800 CLOSE PSI @ 1200
Test Lines	10/20/2012 03:36					5120.0		PRESSURE TEST OK
Pump Spacer	10/20/2012 03:41		6	40	40		198.0	FRESH WATER SPACER

Sold To # : 300721

Ship To # :2952364

Quote # :

Sales Order # : 9826976

SUMMIT Version: 7.3.0045

Sunday, October 28, 2012 04:36:00

## Cementing Job Log

Activity Description	Date/Time	Cht #	Rate bbl/min	Volume bbl		Pressure psig		Comments
				Stage	Total	Tubing	Casing	
Pump Lead Cement	10/20/2012 03:53		7	204.9	204.9		520.0	650 SKS 12.8PPG 1.77 YEILD 9.34 GAL / SK LEAD CEMENT WEIGHT VERIFIED VIA MUD SCALES ADDED 3.5 BOXES OF TUFF FIBER IN THE FIRST 100 BBLS WHILE PUMPING DOWN HOLE
Pump Tail Cement	10/20/2012 04:24		7	69.8	69.8		264.0	200 SKS 12.8 PPG 1.96 YEILD 10.95 GAL / SK TAIL CEMENT WEIGHT VERIFIED VIA MUD SCALES THROUGH OUT TAIL CEMENT
Shutdown	10/20/2012 04:35							
Drop Plug	10/20/2012 04:37							PLUG AWAY NO PROBLEMS
Pump Displacement	10/20/2012 04:41		8	278.8	278.8		1004.0	FRESH WATER DISPLACEMENT WASHED UP ON TOP OF PLUG PER CO REP REQUEST
Slow Rate	10/20/2012 05:15		4	268.8	268.8		800.0	SLOW RATE TO BUMP PLUG
Bump Plug	10/20/2012 05:18		4	278.8	278.8		730.0	BUMP PLUG @ 730 AND TOOK PRESSURE UP TO 1160 PSI
Check Floats	10/20/2012 05:21							FLOATS HELD 1.5 BBLS BACK TO DISPLACEMENT TANKS DROPPED THE BOMB @ 0525
End Job	10/20/2012 05:23							WELL HAD GOOD CIRCULATION THROUGH OUT CEMENT JOB
Open Multiple Stage Cementer	10/20/2012 05:35							OPEN TOOL @ 500 PSI
Pump Spacer	10/20/2012 05:35		6	20	20		260.0	FRESH WATER SPACER
Activity Description	Date/Time	Cht #	Rate bbl/min	Volume bbl		Pressure psig		Comments
				Stage	Total	Tubing	Casing	

Sold To # : 300721

Ship To # :2952364

Quote # :

Sales Order # : 9826976

SUMMIT Version: 7.3.0045

Sunday, October 28, 2012 04:36:00



## Cementing Job Log

Pump Tail Cement	10/20/2012 05:44		7	246.1	246.1		478.0	705 SKS 12.8 PPG 1.96 YEILD 10.95 GAL / SK TAIL CEMENT WEIGHT VERIFIED VIA MUD SCALES THROUGH OUT TAIL CEMENT ADDED 3.5 BOXES OF TUFF FIBER IN THE LAST 100BBLs OF TAIL CEMENT WHILE PUMPING DOWN HOLE
Shutdown	10/20/2012 06:26							WHILE PUMPING TAIL CEMENT WE GOT 110 BBLs OF CEMENT BACK FROM 1ST STAGE TO PIT
Drop Plug	10/20/2012 06:27							PLUG AWAY NO PROBLEMS
Pump Displacement	10/20/2012 06:30		10	121.4	121.4		530.0	FRESH WATER DISPLACEMENT WASHED UP ON TOP PER CO REP REQUEST
Slow Rate	10/20/2012 06:37		7	50	50		350.0	SLOW RATE
Slow Rate	10/20/2012 06:44		1	96	96		330.0	SLOW RATE TO BUMP PLUG
Bump Plug	10/20/2012 07:02		2	121.4	121.4		450.0	BUMP @ 450 TOOK TO 1630 PSI
Close Multiple Stage Cementer	10/20/2012 07:02							CLOSE TOOL @ 1630 PSI
Check Floats	10/20/2012 07:04							FLOATS HELD 1 BBL BACK
End Job	10/20/2012 07:07							WELL HAD GOOD CIRCULATION THROUGH OUT CEMENT JOB GOT 36 BBLs OF CEMENT TO SURFACE RIG USED 80 LB OF SUGAR
Other	10/20/2012 07:08							TICKET CHANGES : CHANGED DEPTH CHARGE TO 3645, ADD HOURS TO 6, CHANGE SUGAR TO 80LB TOOK OFF: PUMP TRAILER, SUCTION HOSE, BOOSTER PUMP CHARGES
Pre-Rig Down Safety Meeting	10/20/2012 07:20							ALL HES EMPLOYEES

Sold To # : 300721

Ship To # :2952364

Quote # :

Sales Order # : 9826976

SUMMIT Version: 7.3.0045

Sunday, October 28, 2012 04:36:00

**HALLIBURTON*****Cementing Job Log***

Activity Description	Date/Time	Cht #	Rate bbl/ min	Volume bbl		Pressure psig		Comments
				Stage	Total	Tubing	Casing	
Rig-Down Equipment	10/20/2012 07:30							
Pre-Convoy Safety Meeting	10/20/2012 08:20							ALL HES EMPLOYEES
Crew Leave Location	10/20/2012 08:30							THANKS FOR USING HALLIBURTON CEMENT CHRIS KUKUS AND CREW

Sold To # : 300721

Ship To # :2952364

Quote # :

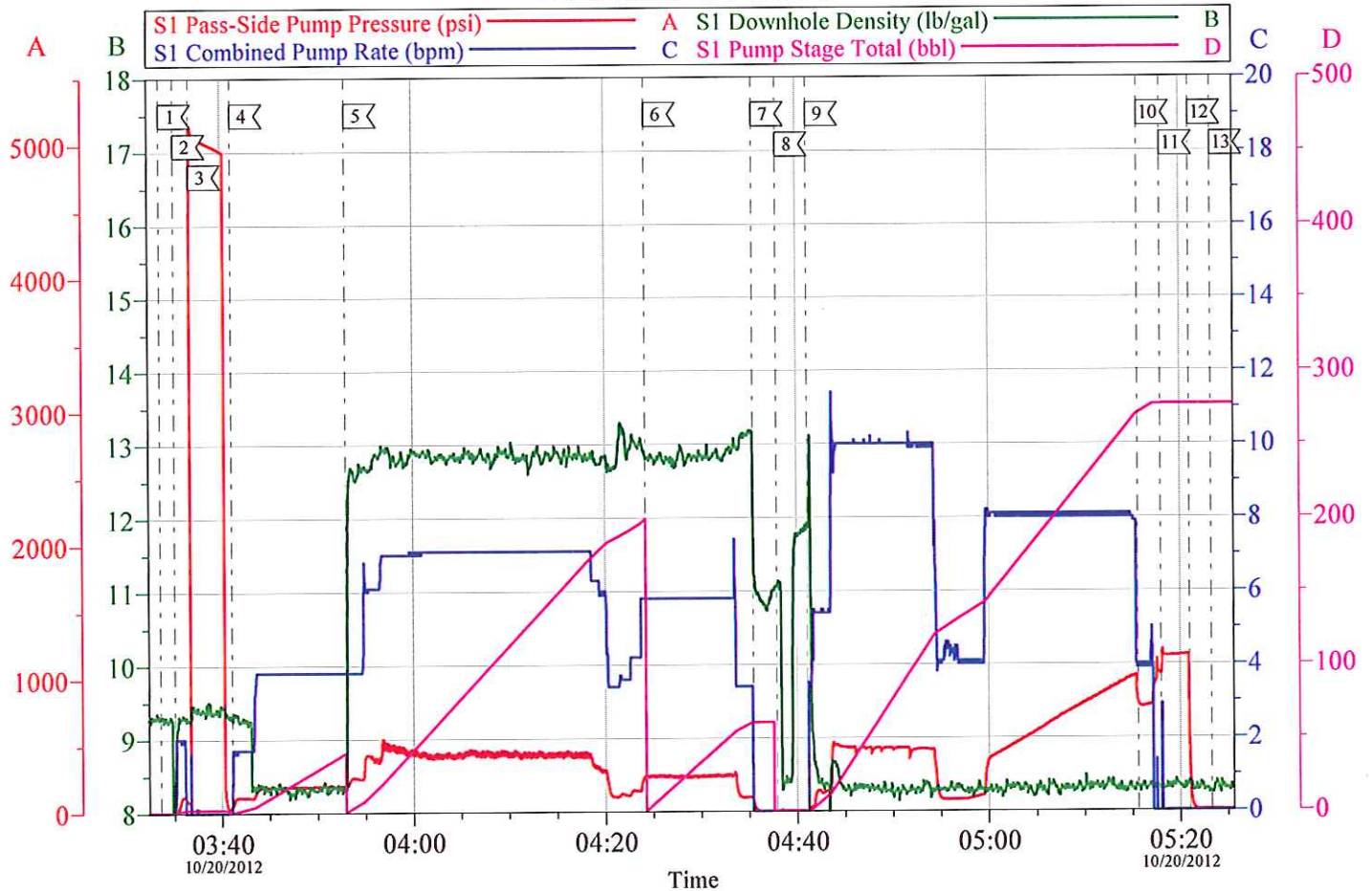
Sales Order # : 9826976

SUMMIT Version: 7.3.0045

Sunday, October 28, 2012 04:36:00

# WPX - RGU 34-36-198

1ST STAGE 9 5/8 SURFACE

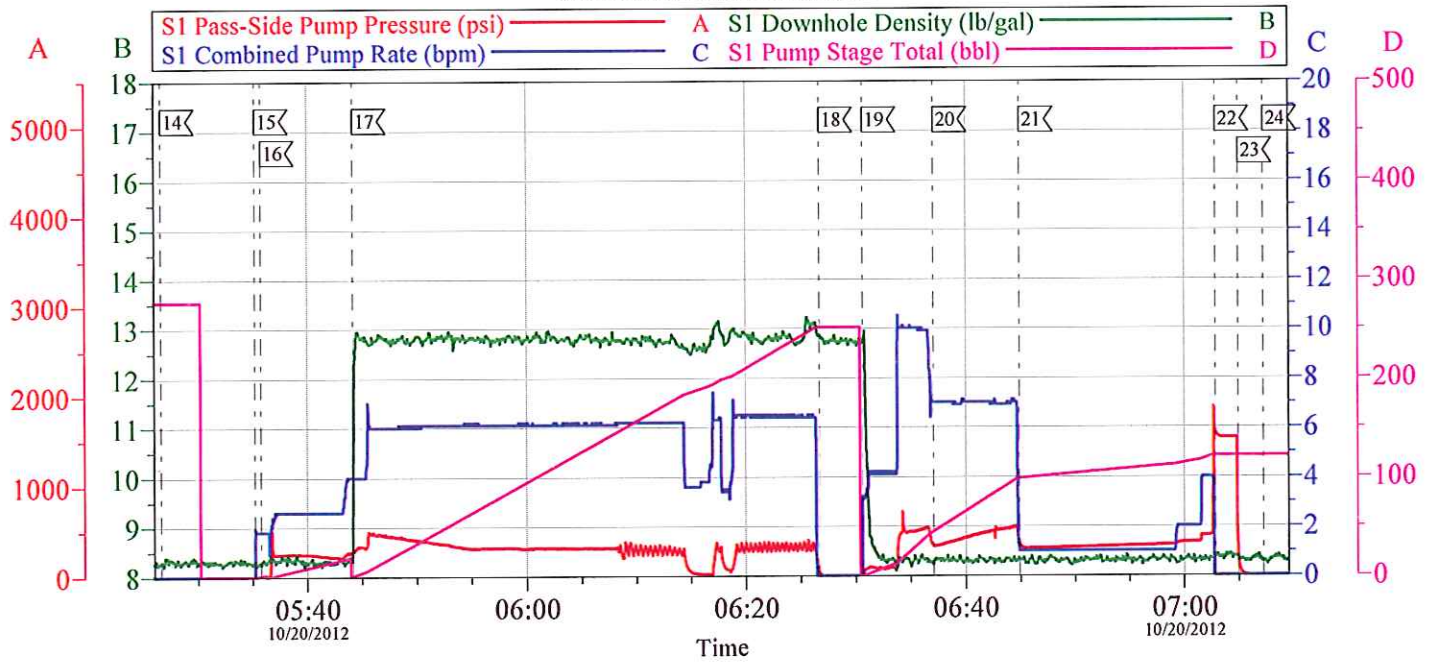


Customer: WPX	Job Date: 19-Oct-2012	Sales Order #: 9826976
Well Description: RGU 34-36-198	Job Type: 2 STAGE	ADC Used: YES
Company Rep: TED RAGSDALE	Cement Supervisor: CHRIS KUKUS	Elite # 3 WESLEY GOWEN

OptiCem v6.4.10  
20-Oct-12 07:20



# WPX - RGU 34-36-198 2ND STAGE 9 5/8 SURFACE



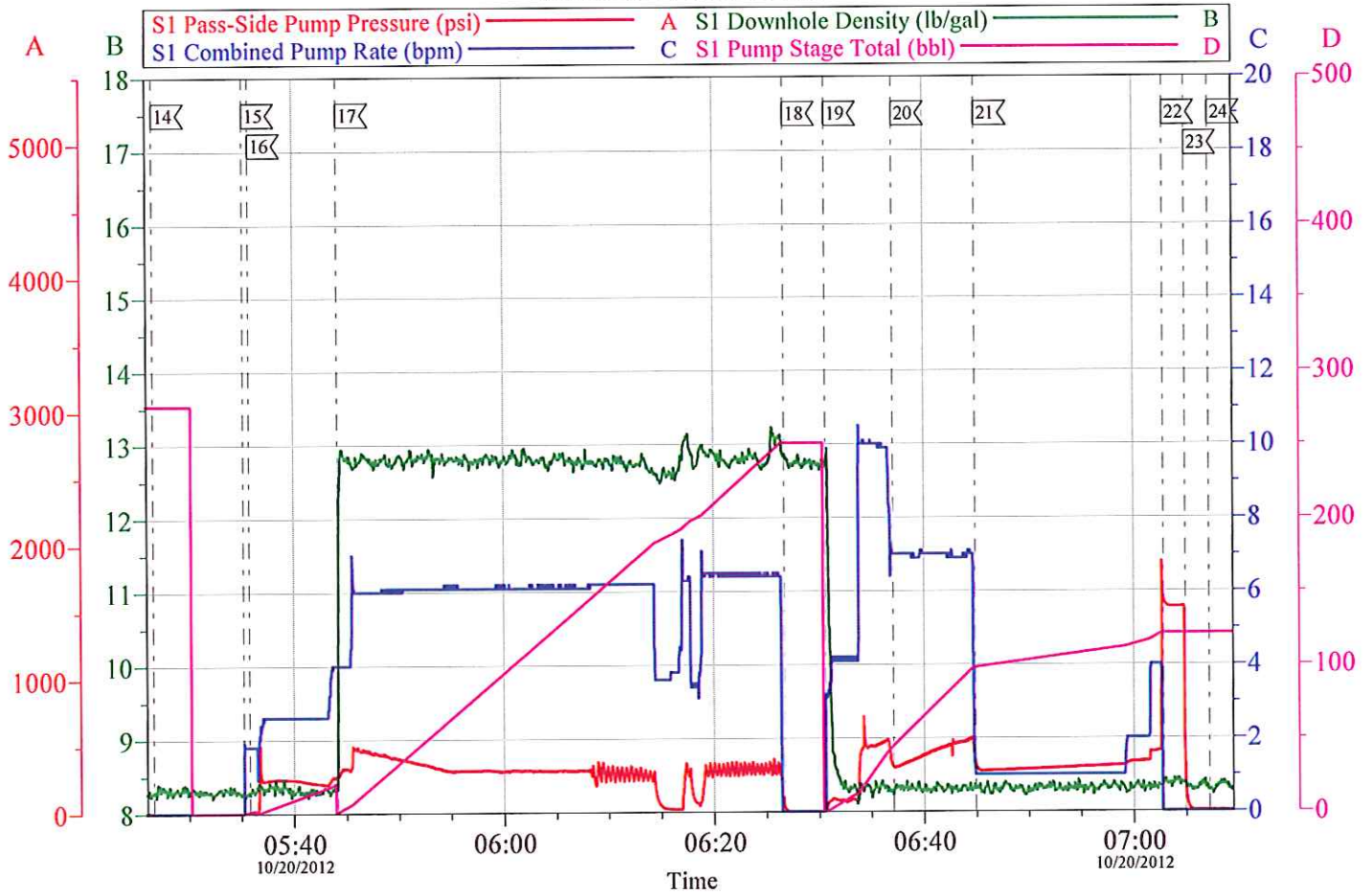
## Local Event Log

14	DROP BOMB	05:26:37	15	OPEN TOOL	05:35:14
16	PUMP FRESH WATER SPACER	05:35:47	17	PUMP TAIL CEMENT	05:44:12
18	SHUTDOWN / DROP PLUG	06:26:42	19	PUMP FRESH WATER DISPLACEMENT	06:30:38
20	SLOW RATE	06:37:04	21	SLOW RATE	06:44:57
22	BUMP PLUG / CLOSE TOOL	07:02:52	23	CHECK FLOATS	07:04:57
24	END JOB	07:07:14			

Customer: WPX	Job Date: 19-Oct-2012	Sales Order #: 9826976
Well Description: RGU 34-36-198	Job Type: 2 STAGE	ADC Used: YES
Company Rep: TED RAGSDALE	Cement Supervisor: CHRIS KUKUS	Elite # 3 WESLEY GOWEN

OptiCem v6.4.10  
20-Oct-12 07:26

# WPX - RGU 34-36-198 2ND STAGE 9 5/8 SURFACE



Customer: WPX	Job Date: 19-Oct-2012	Sales Order #: 9826976
Well Description: RGU 34-36-198	Job Type: 2 STAGE	ADC Used: YES
Company Rep: TED RAGSDALE	Cement Supervisor: CHRIS KUKUS	Elite # 3 WESLEY GOWEN

OptiCem v6.4.10  
20-Oct-12 07:27