

**HALLIBURTON**

---

# **WPX ENERGY ROCKY MOUNTAIN LLC-EBUS**

---

**RGU 434-36-198  
SULPHUR CREEK  
Rio Blanco County , Colorado**

## **Cement Multiple Stages**

**02-Nov-2012**

### **Post Job Summary**

### The Road to Excellence Starts with Safety

Sold To #: 300721	Ship To #: 2960918	Quote #:	Sales Order #: 9930838
Customer: WPX ENERGY ROCKY MOUNTAIN LLC-EBUS	Customer Rep: Ragsdale, Ted		
Well Name: RGU	Well #: 434-36-198	API/UWI #: 05-103-11923	
Field: SULPHUR CREEK	City (SAP): MEEKER	County/Parish: Rio Blanco	State: Colorado
Lat: N 39.916 deg. OR N 39 deg. 54 min. 57.938 secs.	Long: W 108.34 deg. OR W -109 deg. 39 min. 36.266 secs.		
Contractor: CYCLONE 29	Rig/Platform Name/Num: CYCLONE 29		
Job Purpose: Cement Multiple Stages			
Well Type: Development Well	Job Type: Cement Multiple Stages		
Sales Person: MAYO, MARK	Srv Supervisor: ARNOLD, EDWARD	MBU ID Emp #: 439784	

### Job Personnel

HES Emp Name	Exp Hrs	Emp #	HES Emp Name	Exp Hrs	Emp #	HES Emp Name	Exp Hrs	Emp #
ARNOLD, EDWARD John	14.5	439784	GRAGERT, JEFFREY Robert	4	528091	LAULAINEN, ROGER Edward	4	524413
LYNGSTAD, FREDRICK D	4	403742	SINCLAIR, DAN J	14.5	338784	VANALSTYNE, TROY L	14.5	420256
WALPOLE, DARREN Livingston	14.5	485294						

### Equipment

HES Unit #	Distance-1 way	HES Unit #	Distance-1 way	HES Unit #	Distance-1 way	HES Unit #	Distance-1 way
10565341	30 mile	10567589C	30 mile	10713212	30 mile	10867425	30 mile
10897891	30 mile	10938658	30 mile	10938677	30 mile	10973571	30 mile
11259882	30 mile	11360871	30 mile	11808829	30 mile	11808839	30 mile
11808845	30 mile						

### Job Hours

Date	On Location Hours	Operating Hours	Date	On Location Hours	Operating Hours	Date	On Location Hours	Operating Hours
11-2-2012	14	6	11-3-2012	.5	.5			
TOTAL			Total is the sum of each column separately					

### Job

Formation Name	Top	Bottom	Called Out	Date	Time	Time Zone
Formation Depth (MD)			On Location	02 - Nov - 2012	05:00	MST
Form Type		BHST	Job Started	02 - Nov - 2012	10:00	MST
Job depth MD	3695. ft	Job Depth TVD	Job Completed	02 - Nov - 2012	16:15	MST
Water Depth		Wk Ht Above Floor	Departed Loc	02 - Nov - 2012	22:55	MST
Perforation Depth (MD)	From	To			00:30	MST

### Well Data

Description	New / Used	Max pressure psig	Size in	ID in	Weight lbm/ft	Thread	Grade	Top MD ft	Bottom MD ft	Top TVD ft	Bottom TVD ft
-------------	------------	-------------------	---------	-------	---------------	--------	-------	-----------	--------------	------------	---------------

### Tools and Accessories

Type	Size	Qty	Make	Depth	Type	Size	Qty	Make	Depth	Type	Size	Qty	Make
Guide Shoe					Packer					Top Plug			
Float Shoe					Bridge Plug					Bottom Plug			
Float Collar					Retainer					SSR plug set			
Insert Float										Plug Container	9.625	1	HES
Stage Tool										Centralizers			

### Miscellaneous Materials

Gelling Agt	Conc	Surfactant	Conc	Acid Type	Qty	Conc	%
Treatment Fld	Conc	Inhibitor	Conc	Sand Type	Size	Qty	

### Fluid Data

Stage/Plug #: 1	Fluid #	Stage Type	Fluid Name	Qty	Qty uom	Mixing Density lbm/gal	Yield ft <sup>3</sup> /sk	Mix Fluid Gal/sk	Rate bbl/min	Total Mix Fluid Gal/sk
-----------------	---------	------------	------------	-----	---------	------------------------	---------------------------	------------------	--------------	------------------------

1	Fresh Water Spacer		40.00	bbl	8.33	.0	.0	4	
2	1st Stage Lead Cement	VERSACEM (TM) SYSTEM (452010)	525.0	sacks	12.8	1.77	9.34	4	9.34
	9.34 Gal	FRESH WATER							
3	1st Stage Tail Cement	VERSACEM (TM) SYSTEM (452010)	160.0	sacks	12.8	1.96	10.95	4	10.95
	10.95 Gal	FRESH WATER							
4	Displacement		283.00	bbl	8.33	.0	.0	8	
5	Fresh Water Spacer		20.00	bbl	8.33	.0	.0	4	
6	2nd Stage Tail	VERSACEM (TM) SYSTEM (452010)	655.0	sacks	12.8	1.96	10.95	4	10.95
	10.95 Gal	FRESH WATER							
7	Displacement		123.00	bbl	8.33	.0	.0	7	
8	Topout Cement	HALCEM (TM) SYSTEM (452986)	122.0	sacks	15.8	1.15	4.98	1	4.98
	4.98 Gal	FRESH WATER							
<b>Calculated Values</b>		<b>Pressures</b>		<b>Volumes</b>					
Displacement	404.6	Shut In: Instant		Lost Returns	0	Cement Slurry	527.9	Pad	
Top Of Cement	Surface	5 Min		Cement Returns	68	Actual Displacement	404.6	Treatment	
Frac Gradient		15 Min		Spacers	60	Load and Breakdown		Total Job	992.5
<b>Rates</b>									
Circulating	RIG	Mixing	4	Displacement	7	Avg. Job	5		
Cement Left In Pipe	Amount	29 FT	Reason	Shoe Joint					
Frac Ring # 1 @	ID	Frac ring # 2 @	ID	Frac Ring # 3 @	ID	Frac Ring # 4 @	ID		
The Information Stated Herein Is Correct				Customer Representative Signature					



*The Road to Excellence Starts with Safety*

The Road to Excellence Starts with Safety

Sold To #: 300721	Ship To #: 2960918	Quote #:	Sales Order #: 9930838
Customer: WPX ENERGY ROCKY MOUNTAIN LLC-EBUS		Customer Rep: Ragsdale, Ted	
Well Name: RGU		Well #: 434-36-198	API/UWI #: 05-103-11923
Field: SULPHUR CREEK	City (SAP): MEEKER	County/Parish: Rio Blanco	State: Colorado
Legal Description:			
Lat: N 39.916 deg. OR N 39 deg. 54 min. 57.938 secs.		Long: W 108.34 deg. OR W -109 deg. 39 min. 36.266 secs.	
Contractor: CYCLONE 29		Rig/Platform Name/Num: CYCLONE 29	
Job Purpose: Cement Multiple Stages			Ticket Amount:
Well Type: Development Well		Job Type: Cement Multiple Stages	
Sales Person: MAYO, MARK		Srvc Supervisor: ARNOLD, EDWARD	MBU ID Emp #: 439784

Activity Description	Date/Time	Cht #	Rate bbl/min	Volume bbl		Pressure psig		Comments
				Stage	Total	Tubing	Casing	
Call Out	11/02/2012 04:45							
Pre-Convoy Safety Meeting	11/02/2012 06:45							Including entire cement crew.
Crew Leave Yard	11/02/2012 07:00							
Arrive At Loc	11/02/2012 10:00							Rig pulling drill pipe.
Assessment Of Location Safety Meeting	11/02/2012 10:05							Water; PH 7.5; KCL 450; So4 <200; Fe 0; Calcium 120; Chlorides 0; Temp 45; TDS 290.
Pre-Rig Up Safety Meeting	11/02/2012 14:30							Including entire cement crew.
Rig-Up Equipment	11/02/2012 14:35							1 Elite # 3; 2 660 bulk truck; 2 field storage silo's; 1 hard line to floor; 1 line to upright; 1 line to rig tank. 9.625" compact head. Multi stage job, using customer supplied plug set.
Rig-Up Completed	11/02/2012 15:30							
Pre-Job Safety Meeting	11/02/2012 15:45							Including everyone on location.
Start Job	11/02/2012 16:15							TD 3695; TP 3681.9; Tool 1583; SJ 29.75; OH 14 1/2" to 1530 13 1/2" to TD; Casing 9.625" 36# J-55; Mud 9.6 ppg.
Pump Water	11/02/2012 16:16		2	2			78.0	Fill lines with fresh water.
Test Lines	11/02/2012 16:17					3506.0		Good pressure test, no leaks.

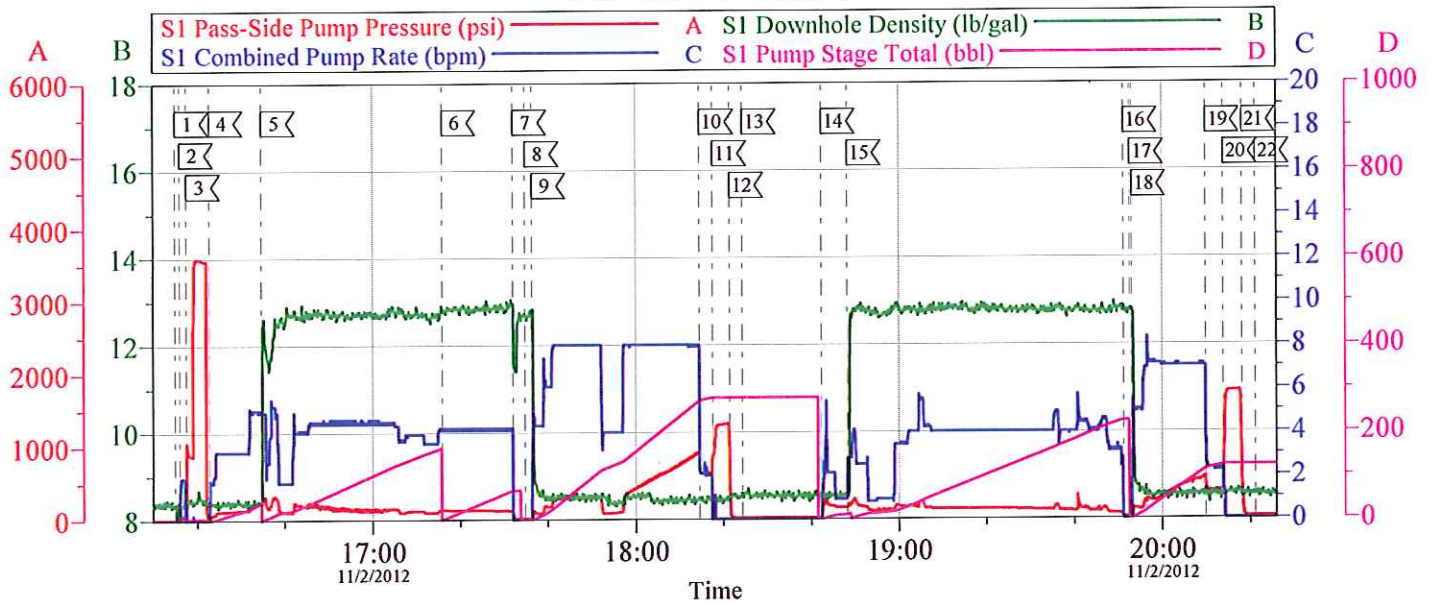
Activity Description	Date/Time	Cht #	Rate bbl/min	Volume bbl		Pressure psig		Comments
				Stage	Total	Tubing	Casing	
Pump Spacer 1	11/02/2012 16:22		5	40			210.0	40 BBL fresh water spacer.
Pump 1st Stage Lead Slurry	11/02/2012 16:34		4	165.5			140.0	625 sks Stage 1 Lead Cement, 12.8 ppg, 1.77 cf3, 9.34 gal/sk.
Pump 1st Stage Tail Slurry	11/02/2012 17:15		4	55.8			140.0	160 sks Stage 1 Tail Cement, 12.8 ppg, 1.96 cf3, 10.34 gal/sk.
Shutdown	11/02/2012 17:32							
Drop Plug	11/02/2012 17:34							Placed Plug in pipe.
Pump Displacement	11/02/2012 17:36		8	272.3			914.0	Fresh water displacement. Slow rate at 112 BBL's gone to 4 BBL/MIN for 20 BBL's to allow wiper plug to pass through tool.
Slow Rate	11/02/2012 18:14		2	10			635.0	Slow rate last 10 BBL's of displacement prior to bumping the plug.
Bump Plug	11/02/2012 18:17				282.3		1798.0	Bumped plug and take 1000 PSI over.
Check Floats	11/02/2012 18:21							Floats held, 1 1/2 BBL back
Drop Opening Device For Multiple Stage Cementer	11/02/2012 18:24							Allow 10 min for device to reach tool. Opening pressure at 650 psi.
Open Multiple Stage Cementer	11/02/2012 18:42						650.0	Multi Stage Cementer opened properly.
Pump Spacer 1	11/02/2012 18:42		4	10			240.0	10 BBL fresh water spacer.
Pump 2nd Stage Tail Slurry	11/02/2012 18:48		4	288.6			140.0	655 sks Stage Tail Cement, 12.8 ppg, 1.96 cf3, 10.34 gal/sk.
Shutdown	11/02/2012 19:51							
Drop Plug	11/02/2012 19:52							Drop closing device for multi stage cementer.
Pump Displacement	11/02/2012 19:53		6	112.3			561.0	Fresh Water displacement.
Slow Rate	11/02/2012 20:09		2	10			500.0	Slow rate last 10 bbl.'s of displacement prior to bumping plug.
Bump Plug	11/02/2012 20:13				122.3		1722.0	Bump plug. Take 1200 over circulating pressure to close tool. Tool closed properly.



Activity Description	Date/Time	Cht #	Rate bbl/min	Volume bbl		Pressure psig		Comments
				Stage	Total	Tubing	Casing	
Check Floats	11/02/2012 20:18							Floats held, 1/2 BBL back.
Other	11/02/2012 20:21							Rig up for top out.
Other	11/02/2012 22:10							Start Top Out Job.
Pump Cement	11/02/2012 22:20		1	18			.0	122 sks Top Out Cement, 15.8 ppg, 1.15 cf3, 5 gal per/sk. Used 18 BBL's to top out well. Bringing back 228 sks of cement for weigh back. Cement fell back 60 ft from main job; used 18 BBL's to top out well.
Shutdown	11/02/2012 22:40							Shutdown to see if cement would fall back.
Pump Water	11/02/2012 22:53		1	4			.0	Pumped water to clean out lines.
End Job	11/02/2012 22:55							Got 26 BBL's back from the first stage, and 42 BBL's back from the second stage.
Pre-Rig Down Safety Meeting	11/02/2012 23:00							Including entire cement crew.
Rig-Down Equipment	11/02/2012 23:05							
Rig-Down Completed	11/03/2012 00:00							
Pre-Convoy Safety Meeting	11/03/2012 00:15							Including entire cement crew.
Crew Leave Location	11/03/2012 00:30							
Other	11/03/2012 00:30							Thank You for using Halliburton, Ed Arnold and crew.

# WPX - RGU 434-36-198

9 5/8" 2 STAGE SURFACE

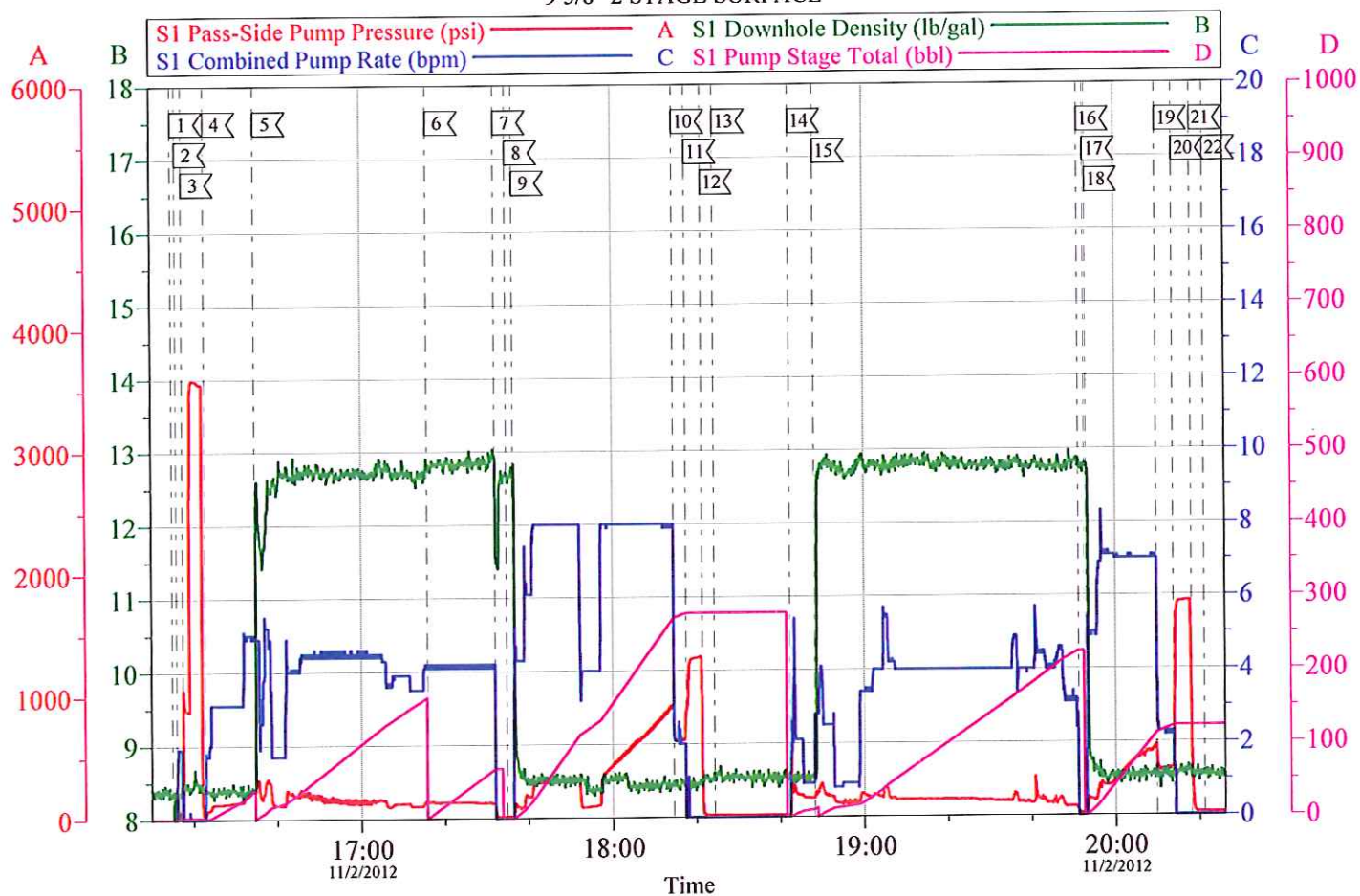


Local Event Log			
1 START JOB	16:15:00	2 FILL LINES	16:16:01
4 H2O SPACER	16:22:51	5 LEAD CEMENT	16:34:47
7 SHUT DOWN	17:32:06	8 DROP DART	17:34:50
10 SLOW RATE	18:14:39	11 BUMP PLUG	18:17:36
13 DROP OPENING TOOL	18:24:21	14 OPEN TOOL/H2O SPACER	18:42:21
16 SHUT DOWN	19:51:11	17 DROP CLOSING PLUG	19:52:38
19 SLOW RATE	20:09:54	20 BUMP PLUG	20:13:54
22 END JOB	20:21:14	3 TEST LINES	16:17:36
		6 TAIL CEMENT	17:15:54
		9 H2O DISPLACEMENT	17:36:24
		12 CHECK FLOATS	18:21:26
		15 TAIL CEMENT	18:48:13
		18 H2O DISPLACEMENT	19:53:04
		21 CHECK FLOATS	20:18:06

Customer: WPX	Job Date: 02-Nov-2012	Sales Order #: 9930838
Well Description: RGU 434-36-198	Job Type: MULTI STAGE SURFACE	ADC Used: YES
Company Rep: TED RAGSDALE	Cement Supervisor: ED ARNOLD	Elite #3: TROY VANALSTYNE

OptiCem v6.4.10  
02-Nov-12 20:47

# WPX - RGU 434-36-198 9 5/8" 2 STAGE SURFACE



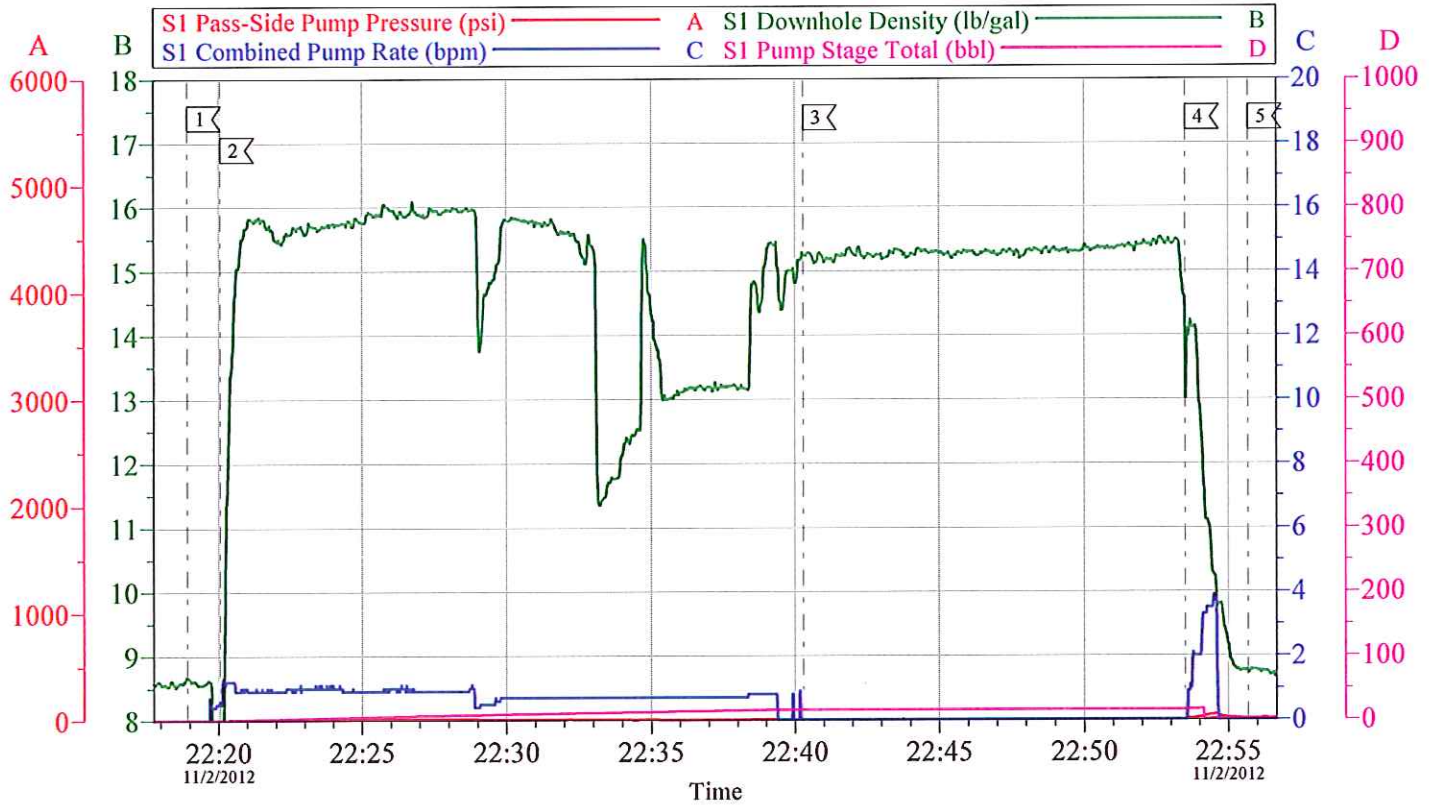
Customer: WPX	Job Date: 02-Nov-2012	Sales Order #: 9930838
Well Description: RGU 434-36-198	Job Type: MULTI STAGE SURFACE	ADC Used: YES
Company Rep: TED RAGSDALE	Cement Supervisor: ED ARNOLD	Elite #3: TROY VANALSTYNE

OptiCem v6.4.10  
02-Nov-12 20:48



# WPX - RGU 434-36-198

TOP OUT



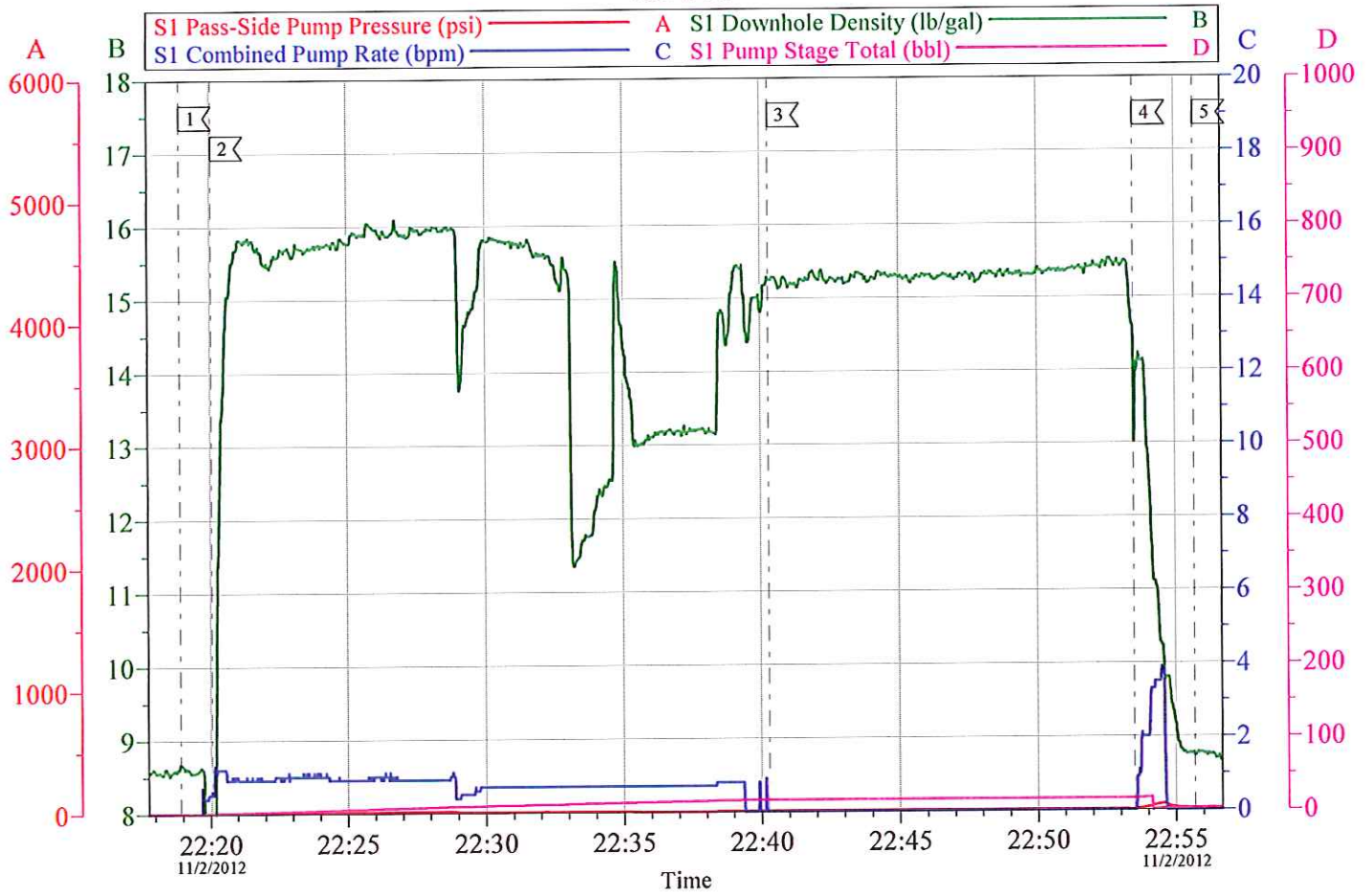
Local Event Log					
1	START JOB	22:18:56	2	PUMP CEMENT	22:20:05
3	SHUT DOWN	22:40:17	4	CLEAR LINES	22:53:31
5	END JOB	22:55:41			

Customer: WPX	Job Date: 02-Nov-2012	Sales Order #: 9930838
Well Description: RGU 434-36-198	Job Type: TOP OUT	ADC Used: YES
Company Rep: TED RAGSDALE	Cement Supervisor: ED ARNOLD	Elite #3: TROY VANALSTYNE

OptiCem v6.4.10  
02-Nov-12 23:06

# WPX - RGU 434-36-198

TOP OUT



Customer: WPX	Job Date: 02-Nov-2012	Sales Order #: 9930838
Well Description: RGU 434-36-198	Job Type: TOP OUT	ADC Used: YES
Company Rep: TED RAGSDALE	Cement Supervisor: ED ARNOLD	Elite #3: TROY VANALSTYNE

OptiCem v6.4.10  
02-Nov-12 23:07