

HALLIBURTON

WPX ENERGY ROCKY MOUNTAIN LLC-EBUS

**RGU 544-36-198
SULPHUR CREEK
Rio Blanco County , Colorado**

Cement Multiple Stages

22-Oct-2012

Post Job Summary

The Road to Excellence Starts with Safety

Sold To #: 300721	Ship To #: 2956878	Quote #:	Sales Order #: 9880666
Customer: WPX ENERGY ROCKY MOUNTAIN LLC-EBUS		Customer Rep: Ragsdale, Ted	
Well Name: RGU		Well #: 544-36-198	API/UWI #: 05-103-11928
Field: SULPHUR CREEK	City (SAP): MEEKER	County/Parish: Rio Blanco	State: Colorado
Lat: N 39.916 deg. OR N 39 deg. 54 min. 58.111 secs.		Long: W 108.34 deg. OR W -109 deg. 39 min. 36.691 secs.	
Contractor: CYCLONE 29		Rig/Platform Name/Num: CYCLONE 29	
Job Purpose: Cement Multiple Stages			
Well Type: Development Well		Job Type: Cement Multiple Stages	
Sales Person: MAYO, MARK		Srvc Supervisor: ARNOLD, EDWARD	MBU ID Emp #: 439784

Job Personnel

HES Emp Name	Exp Hrs	Emp #	HES Emp Name	Exp Hrs	Emp #	HES Emp Name	Exp Hrs	Emp #
ARNOLD, EDWARD John	13	439784	BLUST, CHARLES Thomas	13	386662	LAULAINEN, ROGER Edward	8	524413
ROMKEE, DALE Alan	3	488215	SINCLAIR, DAN J	13	338784	VANALSTYNE, TROY L	13	420256
WALPOLE, DARREN Livingston	3	485294						

Equipment

HES Unit #	Distance-1 way	HES Unit #	Distance-1 way	HES Unit #	Distance-1 way	HES Unit #	Distance-1 way
10248065	30 mile	10564022	30 mile	10616651C	30 mile	10784080	30 mile
10867322	30 mile	10938658	30 mile	10938678	30 mile	10998512	30 mile
11259882	30 mile	11360883	30 mile	11808827	30 mile	11808839	30 mile
11808843	30 mile						

Job Hours

Date	On Location Hours	Operating Hours	Date	On Location Hours	Operating Hours	Date	On Location Hours	Operating Hours
10-21-2012	3	1	10-22-2012	10.5	6			

TOTAL Total is the sum of each column separately

Job

Formation Name	Job Times
Formation Depth (MD) Top Bottom	Date Time Time Zone
Form Type BHST	21 - Oct - 2012 16:30 MST
Job depth MD 3715. ft Job Depth TVD 3715. ft	On Location 21 - Oct - 2012 21:00 MST
Water Depth Wk Ht Above Floor 3. ft	Job Started 22 - Oct - 2012 04:00 MST
Perforation Depth (MD) From To	Job Completed 22 - Oct - 2012 08:31 MST
	Departed Loc 22 - Oct - 2012 10:30 MST

Well Data

Description	New / Used	Max pressure psig	Size in	ID in	Weight lbm/ft	Thread	Grade	Top MD ft	Bottom MD ft	Top TVD ft	Bottom TVD ft
-------------	------------	-------------------	---------	-------	---------------	--------	-------	-----------	--------------	------------	---------------

Tools and Accessories

Type	Size	Qty	Make	Depth	Type	Size	Qty	Make	Depth	Type	Size	Qty	Make
Guide Shoe					Packer					Top Plug			
Float Shoe					Bridge Plug					Bottom Plug			
Float Collar					Retainer					SSR plug set			
Insert Float										Plug Container	9.625	1	HES
Stage Tool										Centralizers			

Miscellaneous Materials

Gelling Agt	Conc	Surfactant	Conc	Acid Type	Qty	Conc	%
Treatment Fld	Conc	Inhibitor	Conc	Sand Type	Size	Qty	

Fluid Data

Stage/Plug #: 1									
Fluid #	Stage Type	Fluid Name	Qty	Qty uom	Mixing Density lbm/gal	Yield ft3/sk	Mix Fluid Gal/sk	Rate bbl/min	Total Mix Fluid Gal/sk

Cementing Job Summary

Stage/Plug #: 1									
Fluid #	Stage Type	Fluid Name	Qty	Qty uom	Mixing Density lbm/gal	Yield ft ³ /sk	Mix Fluid Gal/sk	Rate bbl/min	Total Mix Fluid Gal/sk
1	Fresh Water Spacer		40.00	bbl	8.33	.0	.0	4	
2	1st Stage Lead Cement	VERSACEM (TM) SYSTEM (452010)	625.0	sacks	12.8	1.77	9.34	6	9.34
	9.34 Gal	FRESH WATER							
3	1st Stage Tail Cement	VERSACEM (TM) SYSTEM (452010)	200.0	sacks	12.8	1.96	10.95	6	10.95
	10.95 Gal	FRESH WATER							
4	Displacement		283.00	bbl	8.33	.0	.0	8	
5	Fresh Water Spacer		20.00	bbl	8.33	.0	.0	4	
6	2nd Stage Tail	VERSACEM (TM) SYSTEM (452010)	720.0	sacks	12.8	1.96	10.95	6	10.95
	10.95 Gal	FRESH WATER							
7	Displacement		124.00	bbl	8.33	.0	.0	7	
Calculated Values		Pressures		Volumes					
Displacement	407.8	Shut In: Instant		Lost Returns		Cement Slurry	518.1	Pad	
Top Of Cement	SURFACE	5 Min		Cement Returns	115	Actual Displacement	407.8	Treatment	
Frac Gradient		15 Min		Spacers	60	Load and Breakdown		Total Job	985.9
Rates									
Circulating	RIG	Mixing	6	Displacement	7	Avg. Job	6.5		
Cement Left In Pipe	Amount	45.4 ft	Reason	Shoe Joint					
Frac Ring # 1 @	ID	Frac ring # 2 @	ID	Frac Ring # 3 @	ID	Frac Ring # 4 @	ID		
The Information Stated Herein Is Correct				Customer Representative Signature					

The Road to Excellence Starts with Safety

Sold To #: 300721	Ship To #: 2956878	Quote #:	Sales Order #: 9880666
Customer: WPX ENERGY ROCKY MOUNTAIN LLC-EBUS	Customer Rep: Ragsdale, Ted		
Well Name: RGU	Well #: 544-36-198	API/UWI #: 05-103-11928	
Field: SULPHUR CREEK	City (SAP): MEEKER	County/Parish: Rio Blanco	State: Colorado
Legal Description:			
Lat: N 39.916 deg. OR N 39 deg. 54 min. 58.111 secs.		Long: W 108.34 deg. OR W -109 deg. 39 min. 36.691 secs.	
Contractor: CYCLONE 29	Rig/Platform Name/Num: CYCLONE 29		
Job Purpose: Cement Multiple Stages			Ticket Amount:
Well Type: Development Well	Job Type: Cement Multiple Stages		
Sales Person: MAYO, MARK	Srv Supervisor: ARNOLD, EDWARD	MBU ID Emp #: 439784	

Activity Description	Date/Time	Cht #	Rate bbl/min	Volume bbl		Pressure psig		Comments
				Stage	Total	Tubing	Casing	
Call Out	10/21/2012 14:30							
Pre-Convoy Safety Meeting	10/21/2012 18:15							Including entire cement crew.
Crew Leave Yard	10/21/2012 18:30							
Arrive At Loc	10/21/2012 21:00							Rig starting casing. rig finished casing at 0100 on 10-22. Lost returns. Rig pumped on well for 3 hours till returns returned.
Assessment Of Location Safety Meeting	10/21/2012 21:15							Water; PH 7.5; KCL 0; So4 <200; Fe 0; Calcium 250; Chlorides 0; Temp 60; TDS 290.
Pre-Rig Up Safety Meeting	10/21/2012 22:45							Including entire cement crew.
Rig-Up Equipment	10/21/2012 23:00							1 Elite # 4; 1 660 bulk truck; 2 field storage silo's; 1 hard line to floor; 1 line to upright; 1 line to rig tank. 9.625" compact head. Multi stage job, using customer supplied plug set.
Rig-Up Completed	10/22/2012 00:00							
Pre-Job Safety Meeting	10/22/2012 03:45							Including everyone on location.
Start Job	10/22/2012 04:00							TD 3715; TP 3707.8; Tool 1613.1; SJ 45.4; OH 14 1/2" to 1550 13 1/2" to TD; Casing 9.625" 36# J-55; Mud 9.1 ppg.

Sold To #: 300721

Ship To #: 2956878

Quote #:

Sales Order #:

9880666

SUMMIT Version: 7.3.0045

Monday, November 05, 2012 12:48:00

Cementing Job Log

Activity Description	Date/Time	Cht #	Rate bbl/min	Volume bbl		Pressure psig		Comments
				Stage	Total	Tubing	Casing	
Pump Water	10/22/2012 04:01		2	2			91.0	Fill lines with fresh water.
Test Lines	10/22/2012 04:02					3069.0		Good pressure test, no leaks.
Pump Spacer 1	10/22/2012 04:08		4	40			166.0	40 BBL fresh water spacer.
Pump 1st Stage Lead Slurry	10/22/2012 04:20		6	197			320.0	625 sks Stage 1 Lead Cement, 12.8 ppg, 1.77 cf3, 9.34 gal/sk.
Pump 1st Stage Tail Slurry	10/22/2012 04:51		6	44.8			224.0	129 sks Stage 1 Tail Cement, 12.8 ppg, 1.96 cf3, 10.34 gal/sk. Cut 71 sks off of first stage and used it on second stage.
Shutdown	10/22/2012 05:00							
Drop Plug	10/22/2012 05:04							Placed plug in pipe.
Pump Displacement	10/22/2012 05:06		8	273.1			785.0	Fresh water displacement. Slow rate at 114 BBL's gone to 4 BBL/MIN for 20 BBL's to allow wiper plug to pass through tool.
Slow Rate	10/22/2012 05:48		2	10			650.0	Slow rate 10 BBL's prior to bumping the plug.
Bump Plug	10/22/2012 05:49						1100.0	Bumped plug, took 500 PSI over.
Check Floats	10/22/2012 05:52							Floats held, 1 BBL back
Drop Opening Device For Multiple Stage Cementer	10/22/2012 05:54							Allow 10 min for device to reach tool. Opening pressure at 600 psi.
Next Stage	10/22/2012 06:08						550.0	Tool opened at 550 psi.
Pump Spacer 1	10/22/2012 06:08		4	20			132.0	20 BBL fresh water spacer.
Pump 2nd Stage Tail Slurry	10/22/2012 06:18		6	276.3			291.0	791 sks Stage Tail Cement, 12.8 ppg, 1.96 cf3, 10.34 gal/sk.
Shutdown	10/22/2012 07:08							
Drop Plug	10/22/2012 07:09							Drop closing device for multi stage cementer.
Pump Displacement	10/22/2012 07:11		8	114.7			411.0	Fresh Water displacement.
Activity Description	Date/Time	Cht	Rate bbl/min	Volume bbl		Pressure psig		Comments

Sold To # : 300721

Ship To # :2956878

Quote # :

Sales Order # : 9880666

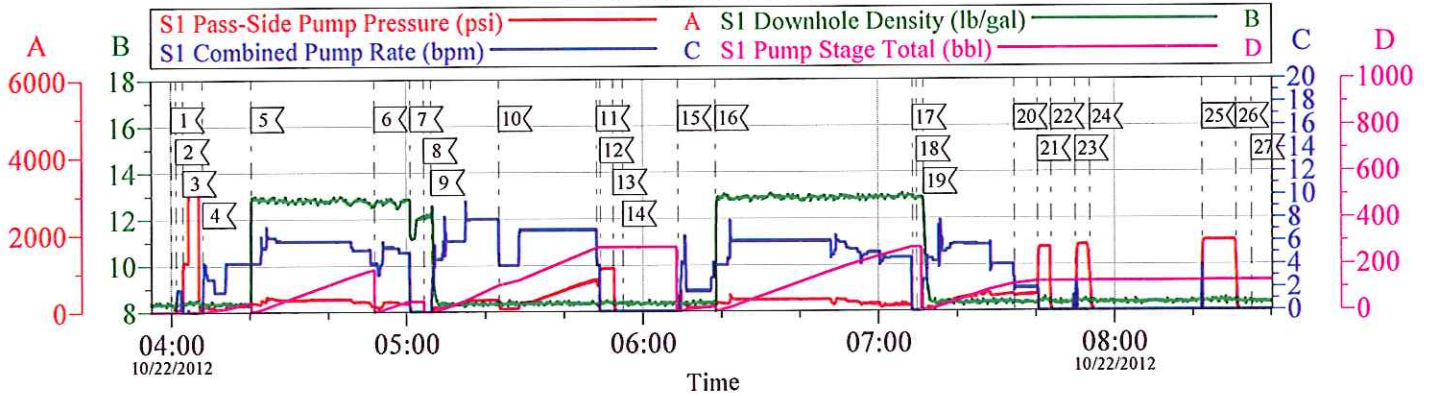
SUMMIT Version: 7.3.0045

Monday, November 05, 2012 12:48:00

Cementing Job Log

		#		Stage	Total	Tubing	Casing	
Slow Rate	10/22/2012 07:34		2	10			400.0	Slow rate last 10 bbl's of displacement prior to bumping plug.
Bump Plug	10/22/2012 07:40				124.7		1600.0	Bump plug. Take 1200 over circulating pressure to close tool.
Check Floats	10/22/2012 07:43							1 BBL back. Small dribble, Co Rep decided to re bump plug
Bump Plug	10/22/2012 07:50						1705.0	Re bump plug.
Check Floats	10/22/2012 07:53							1 BBL back. Small dribble, Co Rep decided to re bump plug
Bump Plug	10/22/2012 08:22						1800.0	Re bump plug.
Check Floats	10/22/2012 08:31							Floats held. 1 BBL back.
End Job	10/22/2012 08:35							Got 41 BBL's of good cement to surface from first stage, and 74 to surface on second stage. No sugar used on this job.
Pre-Rig Down Safety Meeting	10/22/2012 08:40							Including entire cement crew.
Rig-Down Equipment	10/22/2012 08:45							
Rig-Down Completed	10/22/2012 10:15							
Pre-Convoy Safety Meeting	10/22/2012 10:20							Including entire cement crew
Crew Leave Location	10/22/2012 10:30							Crew leaves location.
Other	10/22/2012 10:30							Thank You for using Halliburton, Ed Arnold and crew.

WPX - RGU 544-36-198
2 STAGE 9 5/8" SURFACE

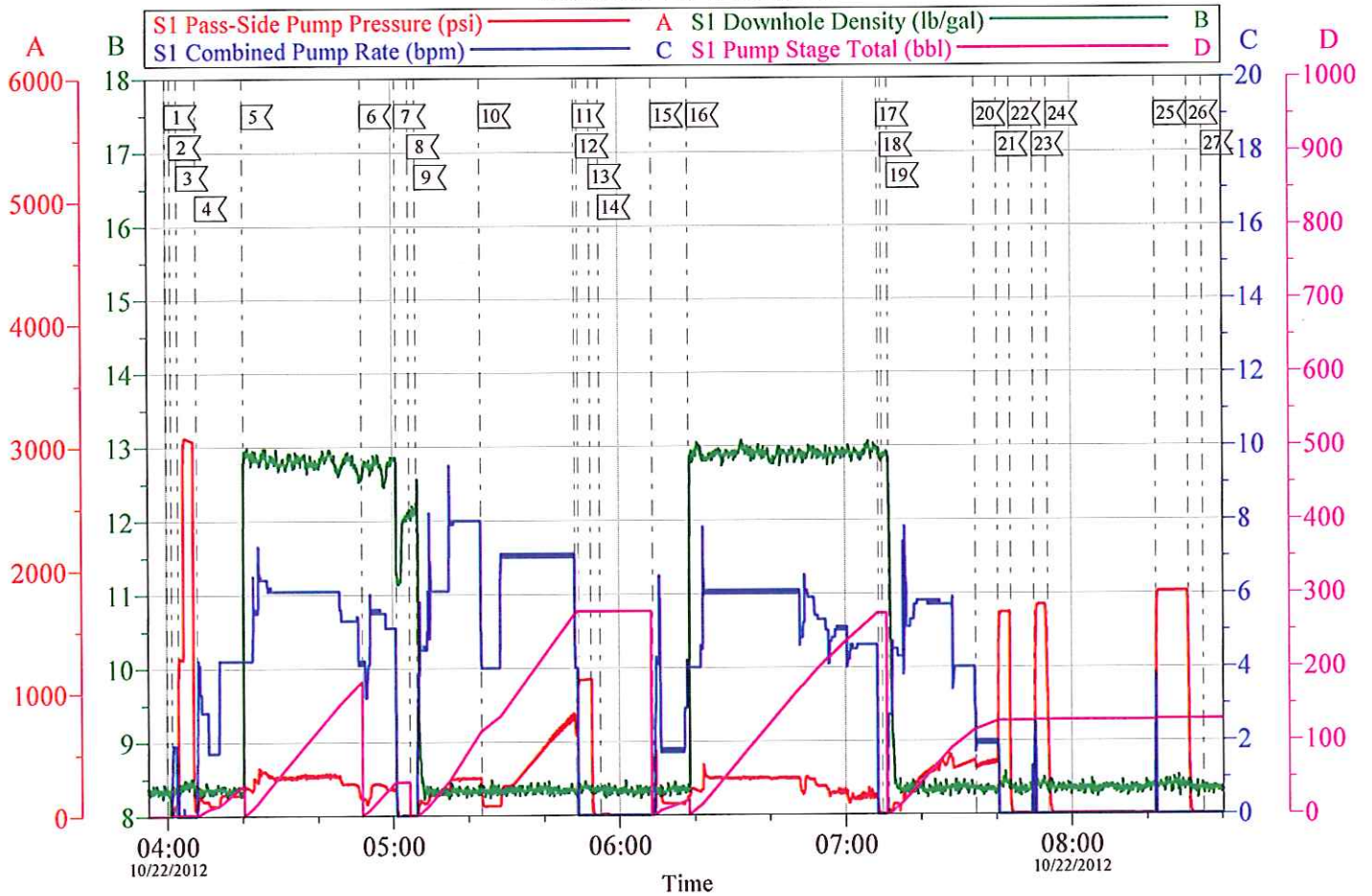


Local Event Log		
[1] START JOB	04:00:01	[2] FILL LINES 04:01:14
[3] TEST LINES	04:02:58	[4] H2O SPACER 04:08:00
[5] 1ST STAGE LEAD CEMENT	04:20:25	[6] 1ST STAGE TAIL CEMENT 04:51:52
[7] SHUT DOWN	05:00:56	[8] DROP PLUG 05:04:31
[9] H2O DISPLACEMENT	05:06:21	[10] SLOW RATE FOR TOOL 05:23:31
[11] SLOW RATE	05:48:22	[12] BUMP PLUG 05:49:20
[13] CHECK FLOATS	05:52:32	[14] DROP OPENING TOOL 05:54:59
[15] OPEN TOOL/PUMP H2O SPACER	06:08:59	[16] 2ND STAGE TAIL CEMENT 06:18:32
[17] SHUT DOWN	07:08:49	[18] DROP PLUG 07:09:47
[19] H2O DISPLACEMENT	07:11:32	[20] SLOW RATE 07:34:35
[21] BUMP PLUG	07:40:28	[22] CHECK FLOATS 07:43:54
[23] REBUMP PLUG	07:50:01	[24] RECHECK FLOATS 07:53:44
[25] REBUMP PLUG	08:22:26	[26] RECHECK FLOATS 08:31:09
[27] END JOB	08:35:06	

Customer: WPX	Job Date: 22-Oct-2012	Sales Order #: 9880666
Well Description: RGU 544-36-198	Job Type: 2 STAGE SURFACE	ADC Used: YES
Company Rep: TED RAGSDALE	Cement Supervisor: ED ARNOLD	Elite #4: DAN SINCLAIR

OptiCem v6.4.10
22-Oct-12 08:42

WPX - RGU 544-36-198 2 STAGE 9 5/8" SURFACE



Customer: WPX	Job Date: 22-Oct-2012	Sales Order #: 9880666
Well Description: RGU 544-36-198	Job Type: 2 STAGE SURFACE	ADC Used: YES
Company Rep: TED RAGSDALE	Cement Supervisor: ED ARNOLD	Elite #4: DAN SINCLAIR

OptiCem v6.4.10
22-Oct-12 08:42