

**HALLIBURTON**

---

# **WPX ENERGY ROCKY MOUNTAIN LLC-EBUS**

---

**RGU 344-36-198  
SULPHUR CREEK  
Rio Blanco County , Colorado**

## **Cement Multiple Stages**

**24-Oct-2012**

### **Post Job Summary**

*The Road to Excellence Starts with Safety*

The Road to Excellence Starts with Safety

Sold To #: 300721	Ship To #: 2958641	Quote #:	Sales Order #: 9901641
Customer: WPX ENERGY ROCKY MOUNTAIN LLC-EBUS		Customer Rep: Ragsdale, Ted	
Well Name: RGU		Well #: 344-36-198	API/UWI #: 05-103-11924
Field: SULPHUR CREEK	City (SAP): MEEKER	County/Parish: Rio Blanco	State: Colorado
Lat: N 39.916 deg. OR N 39 deg. 54 min. 58.183 secs.		Long: W 108.34 deg. OR W -109 deg. 39 min. 36.86 secs.	
Contractor: CYCLONE 29		Rig/Platform Name/Num: CYCLONE 29	
Job Purpose: Cement Multiple Stages			
Well Type: Development Well		Job Type: Cement Multiple Stages	
Sales Person: MAYO, MARK		Srvc Supervisor: CHASTAIN, DERICK	MBU ID Emp #: 455848

**Job Personnel**

HES Emp Name	Exp Hrs	Emp #	HES Emp Name	Exp Hrs	Emp #	HES Emp Name	Exp Hrs	Emp #
CHASTAIN, DERICK Allan	9.5	455848	GRAGERT, JEFFREY Robert	9.5	528091	MILLER II, MATTHEW Reginald	9.5	425164
SIMINEO, JEROD M	9.5	479954						

**Equipment**

HES Unit #	Distance-1 way	HES Unit #	Distance-1 way	HES Unit #	Distance-1 way	HES Unit #	Distance-1 way
10567589C	30 mile	10784064	30 mile	10876398	30 mile	10951251	30 mile
11006314	30 mile	11808829	30 mile	4902	30 mile	4905	30 mile

**Job Hours**

Date	On Location Hours	Operating Hours	Date	On Location Hours	Operating Hours	Date	On Location Hours	Operating Hours
10/24/2012	9.5	5						

**TOTAL** Total is the sum of each column separately

Job				Job Times			
Formation Name				Date	Time	Time Zone	
Formation Depth (MD)	Top		Bottom	Called Out	23 - Oct - 2012	19:00	MST
Form Type		BHST		On Location	24 - Oct - 2012	00:00	MST
Job depth MD	3675. ft	Job Depth TVD	3675. ft	Job Started	23 - Oct - 2012	04:49	MST
Water Depth		Wk Ht Above Floor	3. ft	Job Completed	24 - Oct - 2012	08:15	MST
Perforation Depth (MD)	From		To	Departed Loc	24 - Oct - 2012	09:30	MST

**Well Data**

Description	New / Used	Max pressure psig	Size in	ID in	Weight lbm/ft	Thread	Grade	Top MD ft	Bottom MD ft	Top TVD ft	Bottom TVD ft
-------------	------------	-------------------	---------	-------	---------------	--------	-------	-----------	--------------	------------	---------------

**Tools and Accessories**

Type	Size	Qty	Make	Depth	Type	Size	Qty	Make	Depth	Type	Size	Qty	Make
Guide Shoe					Packer					Top Plug			
Float Shoe					Bridge Plug					Bottom Plug			
Float Collar					Retainer					SSR plug set			
Insert Float										Plug Container	9 5/8	1	HES
Stage Tool										Centralizers			

**Miscellaneous Materials**

Gelling Agt	Conc	Surfactant	Conc	Acid Type	Qty	Conc	%
Treatment Fld	Conc	Inhibitor	Conc	Sand Type	Size	Qty	

**Fluid Data**

Stage/Plug #: 1													
Fluid #	Stage Type	Fluid Name	Qty	Qty uom	Mixing Density lbm/gal	Yield ft <sup>3</sup> /sk	Mix Fluid Gal/sk	Rate bbl/min	Total Mix Fluid Gal/sk				

Stage/Plug #: 1													
Fluid #	Stage Type	Fluid Name	Qty	Qty uom	Mixing Density uom	Yield uom	Mix Fluid uom	Rate uom	Total Mix Fluid uom				

**HALLIBURTON****Cementing Job Summary**

Stage/Plug #: 1									
Fluid #	Stage Type	Fluid Name	Qty	Qty uom	Mixing Density lbm/gal	Yield ft <sup>3</sup> /sk	Mix Fluid Gal/sk	Rate bbl/min	Total Mix Fluid Gal/sk
1	Fresh Water Spacer		40.00	bbl	8.33	.0	.0	4	
2	1st Stage Lead Cement	VERSACEM (TM) SYSTEM (452010)	570.0	sacks	12.8	1.77	9.34	8	9.34
		9.34 Gal	FRESH WATER						
3	1st Stage Tail Cement	VERSACEM (TM) SYSTEM (452010)	175.0	sacks	12.8	1.96	10.95	8	10.95
		10.95 Gal	FRESH WATER						
4	Displacement		282.00	bbl	8.33	.0	.0	8	
5	Fresh Water Spacer		40.00	bbl	8.33	.0	.0	4	
6	2nd Stage Tail	VERSACEM (TM) SYSTEM (452010)	715.0	sacks	12.8	1.96	10.95	6	10.95
		10.95 Gal	FRESH WATER						
7	Displacement		250.00	bbl	8.33	.0	.0	8	
Calculated Values		Pressures		Volumes					
Displacement	406.2	Shut In: Instant		Lost Returns		Cement Slurry	490.4	Pad	
Top Of Cement	SURFACE	5 Min		Cement Returns	58	Actual Displacement	406.2	Treatment	
Frac Gradient		15 Min		Spacers	80	Load and Breakdown		Total Job	977
<b>Rates</b>									
Circulating	10	Mixing		8	Displacement	8	Avg. Job	6	
Cement Left In Pipe	Amount	26.2 ft	Reason	Shoe Joint					
Frac Ring # 1 @	ID	Frac ring # 2 @	ID	Frac Ring # 3 @	ID	Frac Ring # 4 @	ID		
The Information Stated Herein Is Correct				Customer Representative Signature					



*The Road to Excellence Starts with Safety*

Sold To #: 300721	Ship To #: 2958641	Quote #:	Sales Order #: 9901641
Customer: WPX ENERGY ROCKY MOUNTAIN LLC-EBUS	Customer Rep: Ragsdale, Ted		
Well Name: RGU	Well #: 344-36-198	API/UWI #: 05-103-11924	
Field: SULPHUR CREEK	City (SAP): MEEKER	County/Parish: Rio Blanco	State: Colorado
Legal Description:			
Lat: N 39.916 deg. OR N 39 deg. 54 min. 58.183 secs.		Long: W 108.34 deg. OR W -109 deg. 39 min. 36.86 secs.	
Contractor: CYCLONE 29	Rig/Platform Name/Num: CYCLONE 29		
Job Purpose: Cement Multiple Stages	Ticket Amount:		
Well Type: Development Well	Job Type: Cement Multiple Stages		
Sales Person: MAYO, MARK	Srv Supervisor: CHASTAIN, DERICK	MBU ID Emp #: 455848	

Activity Description	Date/Time	Cht #	Rate bbl/min	Volume bbl		Pressure psig		Comments
				Stage	Total	Tubing	Casing	
Call Out	10/23/2012 19:00							DISPATCH CALLS OUT CREW
Pre-Convoy Safety Meeting	10/23/2012 21:00							ALL HES EMPLOYEES
Arrive At Loc	10/24/2012 00:00							RIG STILL RUNNING CASING
Assessment Of Location Safety Meeting	10/24/2012 00:30							ALL HES EMPLOYEES
Rig-Up Equipment	10/24/2012 03:00							1 PUMP TRUCK, 2 BODY LOAD BULK TRUCKS, 1 7" CIRCULATING SWAGE, 1 F 450 P/U, MSC TOOL SUPPLIED BY 3RD PARTY.
Pre-Job Safety Meeting	10/24/2012 04:30							ALL HES EMPLOYEES, RIG CREW, CO REP.
Start Job	10/24/2012 04:49							TD 1860', TP 1828.5', SJ 43', FC 1785.4', HOLE 9.875", MUD WT 8.4 PPG. 7 " CSG 20# J55.. DV TOOL SET AT 1162.7 FT.
Pump Water	10/24/2012 04:50		2	2			160.0	FILL LINES
Pressure Test	10/24/2012 04:53							TESTED TO 3347 PSI. HELD PRESSURE 2 MIN. NO LEAKS
Pump Spacer 1	10/24/2012 04:58		4	40			185.0	FRESH WATER
Pump 1st Stage Lead Slurry	10/24/2012 05:10		8	179.7			469.0	1ST STAGE: 570 SKS, 12.8 PPG, 1.77 YIELD, 9.34 GAL/SK, WET AND DRY SAMPLES SUBMITTED.

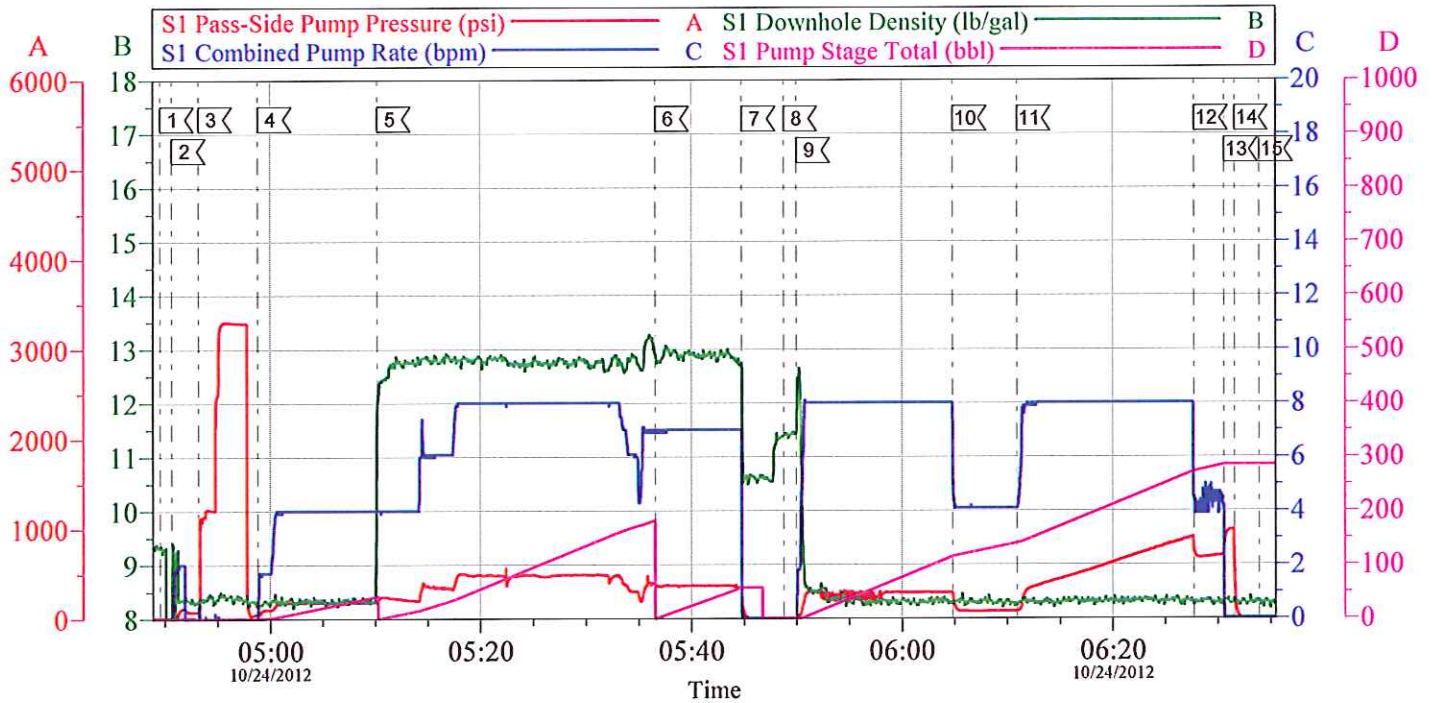
Activity Description	Date/Time	Cht #	Rate bbl/min	Volume bbl		Pressure psig		Comments
				Stage	Total	Tubing	Casing	
Pump 1st Stage Tail Slurry	10/24/2012 05:36		8	61.1			360.0	1ST STAGE: 175 SKS, 12.8 PPG, 1.96 YIELD, 10.95 GAL/SK, WET AND DRY SAMPLES SUBMITTED.
Shutdown	10/24/2012 05:44						.0	
Drop Plug	10/24/2012 05:48							VERIFY PLUG LAUNCHED
Pump Displacement	10/24/2012 05:49		8	281.5			293.0	1ST STAGE DISPLACEMENT FRESH H2O
Slow Rate	10/24/2012 06:04		4	115			85.0	10 BBLs PRIOR TO PLUG PASSING THRU TOOL. PRESSURE SPIKE NOTED
Resume	10/24/2012 06:10		8	135			908.0	RESUME RATE
Slow Rate	10/24/2012 06:27		4	272			580.0	10 BBLs PRIOR TO LANDING PLUG
Bump Plug	10/24/2012 06:30		4	281.5			990.0	PLUG LANDED HOLD FOR 1 MINUTE
Check Floats	10/24/2012 06:31						.0	FLOATS HOLDING, 1 BBL RETURNED BACK TO PUMP
Drop Opening Device For Multiple Stage Cementer	10/24/2012 06:33							DROP BOMB WAIT 10 MINUTES
Open Multiple Stage Cementer	10/24/2012 06:45		2	2			695.0	MSC TOOL PRESSURED UP TO 695 PSI, RETURNS NOTED AT PIT.
Pump Spacer 1	10/24/2012 06:46		4	40			180.0	FRESH WATER TO BEGIN 2ND STAGE
Pump 2nd Stage Tail Slurry	10/24/2012 06:59		6	249.6			284.0	2ND STAGE: 715 SKS, 12.8 PPG, 1.96 YIELD, 10.95 GAL/SK. WET AND DRY SAMPLES SUBMITTED.
Shutdown	10/24/2012 07:15			78				MUD LINES TO PIT SPLIT.
Resume	10/24/2012 07:21		8	249.6			277.0	RESUME PUMPING CEMENT
Shutdown	10/24/2012 07:53						.0	
Drop Plug	10/24/2012 07:55							VERIFY PLUG LAUNCH
Activity Description	Date/Time	Cht	Rate bbl/min	Volume bbl		Pressure psig		Comments



		#		Stage	Total	Tubing	Casing	
Pump Displacement	10/24/2012 07:58		8	124.7			603.0	PUMPED H2O, GOOD RETURNS THROUGH OUT DISPLACEMENT.
Cement Returns to Surface	10/24/2012 08:06			67				58 BBLS CMT TO SURFACE
Slow Rate	10/24/2012 08:14		4	115			460.0	SLOW RATE 10 BBLS PRIOR TO BUMPING PLUG
Close Multiple Stage Cements	10/24/2012 08:15		4	124.7			1680.0	1600 PSI TO CLOSE TOOL
Release Casing Pressure	10/24/2012 08:17						.0	FLOATS HOLDING, 1 BBL RETURNED BACK TO PUMP
End Job	10/24/2012 08:18							NO SUGAR USED, NO ADD HOURS, NO DEREK CHARGE
Post-Job Safety Meeting (Pre Rig-Down)	10/24/2012 08:20							ALL HES EMPLOYEES
Rig-Down Equipment	10/24/2012 08:30							
Pre-Convoy Safety Meeting	10/24/2012 09:20							ALL HES EMPLOYEES
Crew Leave Location	10/24/2012 09:30							LOCATION LEFT FREE OF DEBRESS
Comment	10/24/2012 09:30							THANK YOU FOR CHOOSING HALLIBURTON. DERICK CHASTAIN AND CREW.

# WPX Energy - RGU 344-36-198

1ST STAGE - 9 5/8" SURFACE CASING



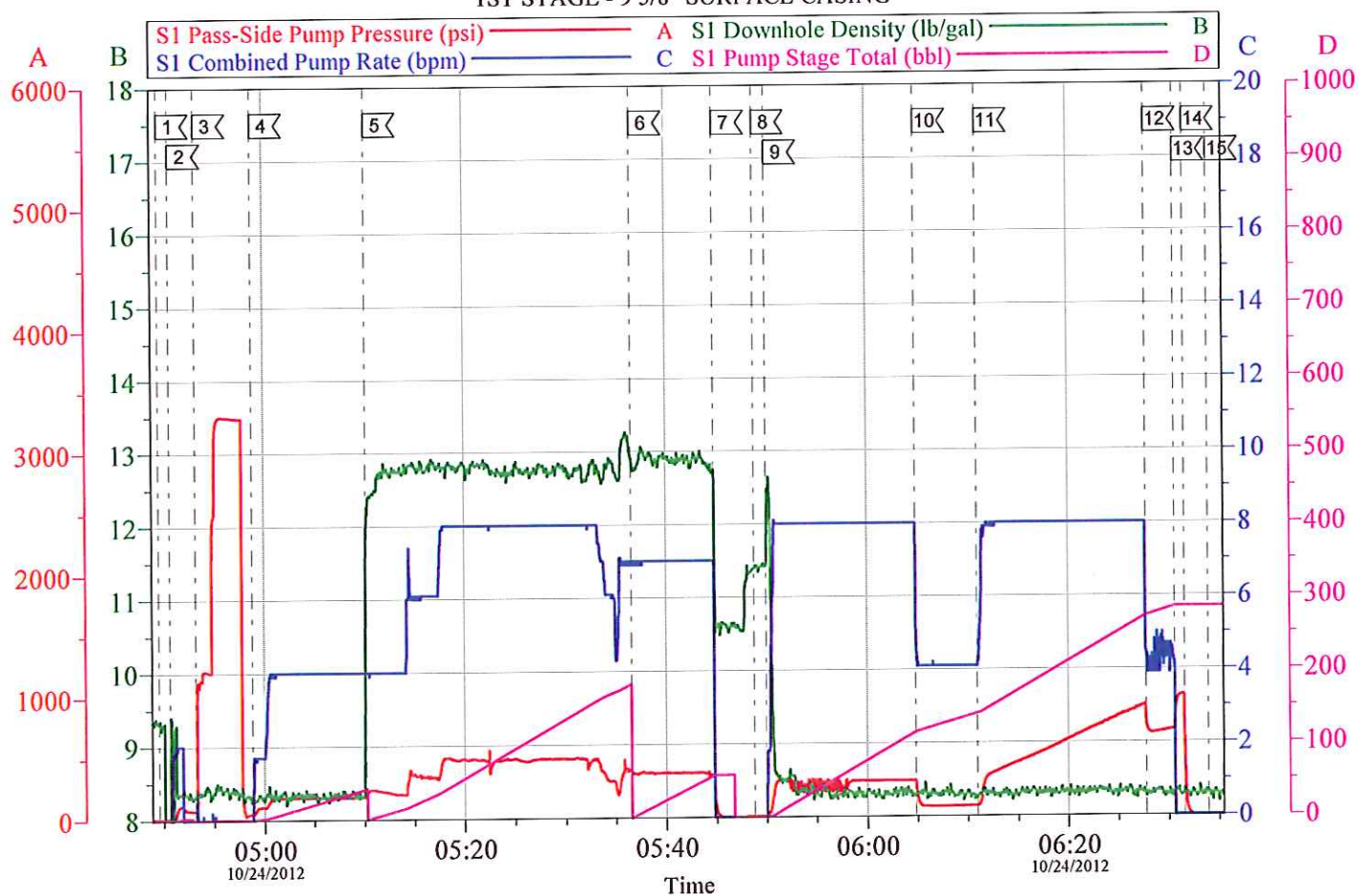
Local Event Log					
1	START JOB	04:49:33	2	FILL LINES	04:50:40
3	TEST LINES	04:53:11	4	PUMP H2O SPACER	04:58:50
5	PUMP LEAD CEMENT	05:10:11	6	PUMP TAIL CEMENT	05:36:35
7	SHUTDOWN	05:44:47	8	DROP PLUG	05:48:46
9	PUMP DISPLACEMENT	05:49:59	10	SLOW RATE	06:04:50
11	RESUME RATE	06:10:55	12	SLOW RATE	06:27:43
13	BUMP PLUG	06:30:33	14	CHECK FLOATS	06:31:32
15	DROP BOMB	06:33:55			

Customer: WPX	Job Date: 24-Oct-2012	Sales Order #: 9901641
Well Description: RGU 344-36-198	Job Type: SURFACE	ADC Used: YES
Company Rep: TED RAGSDALE	Cement Supervisor: DERICK CHASTAIN	Elite #3: JEROD SIMINEO

OptiCem v6.4.21  
24-Oct-12 08:34

# WPX Energy - RGU 344-36-198

1ST STAGE - 9 5/8" SURFACE CASING



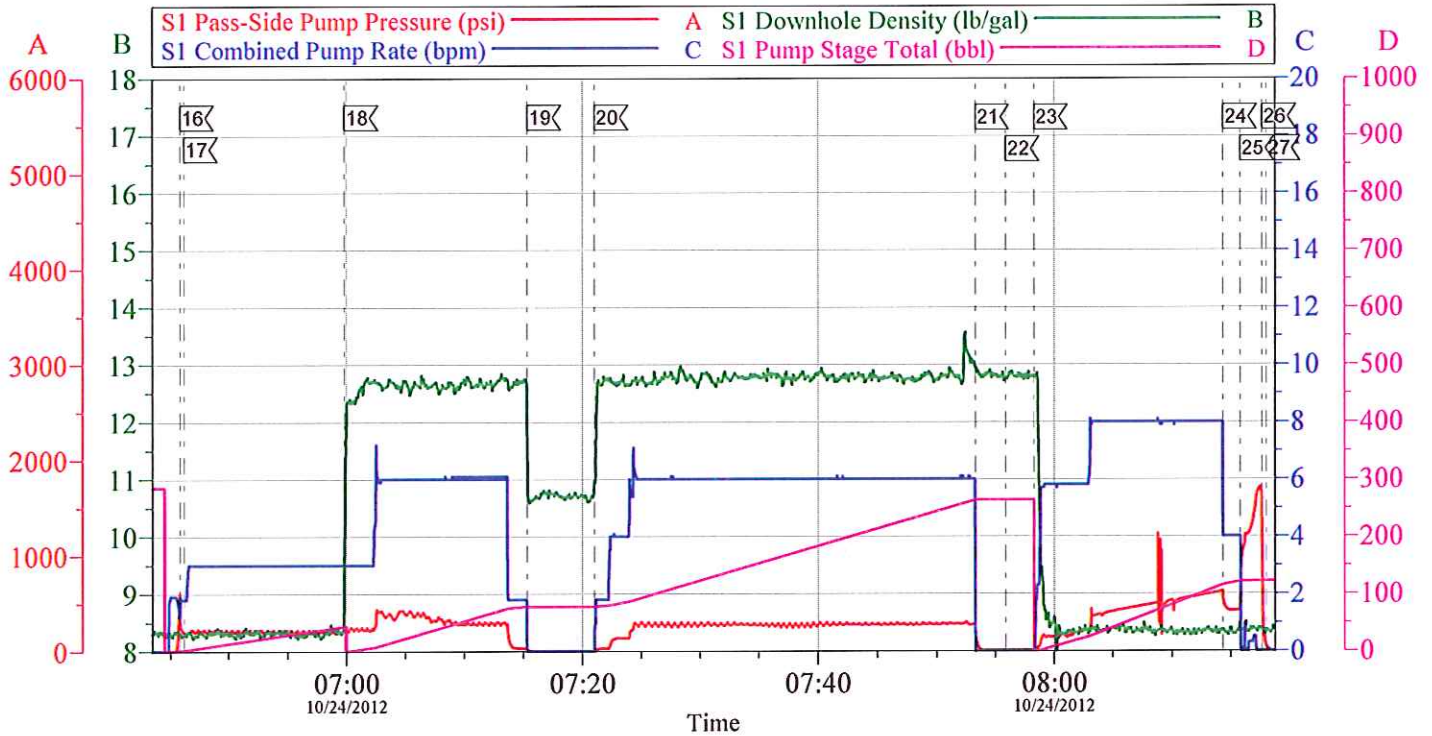
Customer: WPX	Job Date: 24-Oct-2012	Sales Order #: 9901641
Well Description: RGU 344-36-198	Job Type: SURFACE	ADC Used: YES
Company Rep: TED RAGSDALE	Cement Supervisor: DERICK CHASTAIN	Elite #3: JEROD SIMINEO

OptiCem v6.4.21  
24-Oct-12 08:34



# WPX Energy - RGU 344-36-198

2ND STAGE - 9 5/8" SURFACE CASING

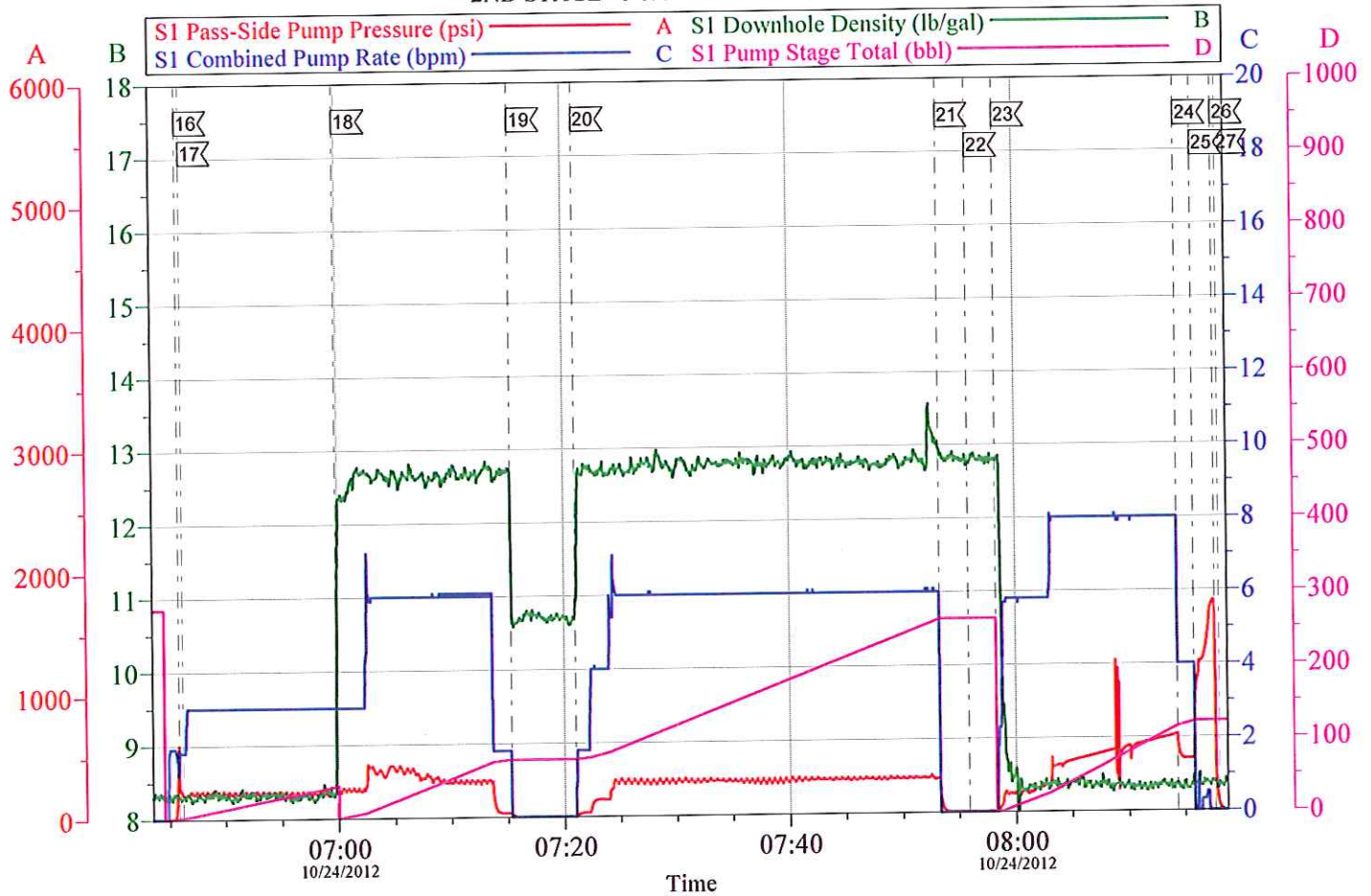


Local Event Log					
16	OPEN TOOL	06:45:50	17	PUMP H2O SPACER	06:46:10
18	PUMP TAIL CEMENT	06:59:51	19	SHUTDOWN	07:15:20
20	RESUME CEMENT	07:21:02	21	SHUTDOWN	07:53:18
22	DROP PLUG	07:55:53	23	PUMP DISPLACEMENT	07:58:18
24	SLOW RATE	08:14:21	25	BUMP PLUG	08:15:48
26	RELEASE PRESSURE	08:17:40	27	END JOB	08:18:01

Customer: WPX	Job Date: 24-Oct-2012	Sales Order #: 9901641
Well Description: RGU 344-36-198	Job Type: SURFACE	ADC Used: YES
Company Rep: TED RAGSDALE	Cement Supervisor: DERICK CHASTAIN	Elite #3: JEROD SIMINEO

OptiCem v6.4.21  
24-Oct-12 08:37

# WPX Energy - RGU 344-36-198 2ND STAGE - 9 5/8" SURFACE CASING



Customer: WPX	Job Date: 24-Oct-2012	Sales Order #: 9901641
Well Description: RGU 344-36-198	Job Type: SURFACE	ADC Used: YES
Company Rep: TED RAGSDALE	Cement Supervisor: DERICK CHASTAIN	Elite #3: JEROD SIMINEO

OptiCem v6.4.21  
24-Oct-12 08:37