

HALLIBURTON

WPX ENERGY ROCKY MOUNTAIN LLC-EBUS

**RGU 433-36-198
SULPHUR CREEK
Rio Blanco County , Colorado**

Cement Multiple Stages

31-Oct-2012

Post Job Summary

The Road to Excellence Starts with Safety

The Road to Excellence Starts With Safety

Sold To #: 300721	Ship To #: 2960707	Quote #:	Sales Order #: 9928297
Customer: WPX ENERGY ROCKY MOUNTAIN LLC-EBUS		Customer Rep: Brunk, Andrew	
Well Name: RGU		Well #: 433-36-198	API/UWI #: 05-103-11926
Field: SULPHUR CREEK	City (SAP): MEEKER	County/Parish: Rio Blanco	State: Colorado
Lat: N 39.916 deg. OR N 39 deg. 54 min. 58.061 secs.		Long: W 108.34 deg. OR W -109 deg. 39 min. 36.292 secs.	
Contractor: CYCLONE 29		Rig/Platform Name/Num: CYCLONE 29	
Job Purpose: Cement Multiple Stages			
Well Type: Development Well		Job Type: Cement Multiple Stages	
Sales Person: MAYO, MARK		Srv Supervisor: DEUSSEN, EDWARD	MBU ID Emp #: 485182

Job Personnel

HES Emp Name	Exp Hrs	Emp #	HES Emp Name	Exp Hrs	Emp #	HES Emp Name	Exp Hrs	Emp #
BANKS, BRENT A	8.5	371353	BURKE, BRENDAN Patrick	11.5	487782	DEUSSEN, EDWARD Eric	8.5	485182
HYDE, DUSTIN C	11.5	453940	LINN, PAUL Andrew	8.5	479143	LYNGSTAD, FREDRICK D	11.5	403742
SIMINEO, JEROD M	8.5	479954	SLAUGHTER, JESSE Dean	11.5	454315			

Equipment

HES Unit #	Distance-1 way	HES Unit #	Distance-1 way	HES Unit #	Distance-1 way	HES Unit #	Distance-1 way
10297346	30 mile	10867322	30 mile	10872429	30 mile	10998512	30 mile
11071559	30 mile	11259886	30 mile	11808847	30 mile	4902	30 mile
4905	30 mile	10897891	30 mile	10867425	30 mile		

Job Hours

Date	On Location Hours	Operating Hours	Date	On Location Hours	Operating Hours	Date	On Location Hours	Operating Hours
10-31-2012	20	6						

TOTAL Total is the sum of each column separately

Job

Formation Name	Job	Job Times
Formation Depth (MD) Top	Bottom	Date Time Time Zone
Form Type	BHST	Called Out 30 - Oct - 2012 10:30 MST
Job depth MD 3636. ft	Job Depth TVD 3636. ft	On Location 31 - Oct - 2012 03:30 MST
Water Depth	Wk Ht Above Floor 4. ft	Job Started 31 - Oct - 2012 08:36 MST
Perforation Depth (MD) From	To	Job Completed 31 - Oct - 2012 19:35 MST
		Departed Loc 31 - Oct - 2012 21:30 MST

Well Data

Description	New / Used	Max pressure psig	Size in	ID in	Weight lbm/ft	Thread	Grade	Top MD ft	Bottom MD ft	Top TVD ft	Bottom TVD ft
-------------	------------	-------------------	---------	-------	---------------	--------	-------	-----------	--------------	------------	---------------

Tools and Accessories

Type	Size	Qty	Make	Depth	Type	Size	Qty	Make	Depth	Type	Size	Qty	Make
Guide Shoe					Packer					Top Plug			
Float Shoe					Bridge Plug					Bottom Plug			
Float Collar					Retainer					SSR plug set	9.625	1	
Insert Float										Plug Container	9.625	1	HES
Stage Tool										Centralizers			

Miscellaneous Materials

Gelling Agt	Conc	Surfactant	Conc	Acid Type	Qty	Conc	%
Treatment Fld	Conc	Inhibitor	Conc	Sand Type	Size	Qty	

Fluid Data

Stage/Plug #: 1									
Fluid #	Stage Type	Fluid Name	Qty	Qty uom	Mixing Density lbm/gal	Yield ft3/sk	Mix Fluid Gal/sk	Rate bbl/min	Total Mix Fluid Gal/sk

Stage/Plug #: 1									
Fluid #	Stage Type	Fluid Name	Qty	Qty uom	Mixing Density lbm/gal	Yield ft ³ /sk	Mix Fluid Gal/sk	Rate bbl/min	Total Mix Fluid Gal/sk
1	Fresh Water Spacer	FRESH WATER	40.00	bbl	8.33	.0	.0	4	
2	1st Stage Lead Cement	VERSACEM (TM) SYSTEM (452010)	515.0	sacks	12.8	1.77	9.34	8	9.34
	0.25 lbm	POLY-E-FLAKE (101216940)							
	0.25 %	HR-5, 50 LB SK (100005050)							
	0.125 lbm	TUF FIBER 594, 15 LB BOX (101350514)							
	9.34 Gal	FRESH WATER							
3	1st Stage Tail Cement	VERSACEM (TM) SYSTEM (452010)	160.0	sacks	12.8	1.96	10.95	8	10.95
	10.95 Gal	FRESH WATER							
4	Displacement	FRESH WATER	278.00	bbl	8.33	.0	.0	10	
5	Fresh Water Spacer	FRESH WATER	20.00	bbl	8.33	.0	.0	4	
6	2nd Stage Tail	VERSACEM (TM) SYSTEM (452010)	655.0	sacks	12.8	1.96	10.95	8	10.95
	10.95 Gal	FRESH WATER							
7	Displacement		122.00	bbl	8.33	.0	.0	10	
8	HalCem Topout	HALCEM (TM) SYSTEM (452986)	460.0	sacks	15.8	1.15	4.98	1	4.98
	4.98 Gal	FRESH WATER							
Calculated Values		Pressures		Volumes					
Displacement	278	Shut In: Instant		Lost Returns	NO	Cement Slurry		Pad	
Top Of Cement	SURFACE	5 Min		Cement Returns		Actual Displacement	278	Treatment	
Frac Gradient		15 Min		Spacers	60	Load and Breakdown		Total Job	
Rates									
Circulating		Mixing	8	Displacement	10	Avg. Job	9		
Cement Left In Pipe	Amount	0 ft	Reason	Shoe Joint					
Frac Ring # 1 @	ID	Frac ring # 2 @	ID	Frac Ring # 3 @	ID	Frac Ring # 4 @	ID		
The Information Stated Herein Is Correct				Customer Representative Signature					

The Road to Excellence Starts with Safety

Sold To #: 300721	Ship To #: 2960707	Quote #:	Sales Order #: 9928297
Customer: WPX ENERGY ROCKY MOUNTAIN LLC-EBUS	Customer Rep: Brunk, Andrew		
Well Name: RGU	Well #: 433-36-198	API/UWI #: 05-103-11926	
Field: SULPHUR CREEK	City (SAP): MEEKER	County/Parish: Rio Blanco	State: Colorado
Legal Description:			
Lat: N 39.916 deg. OR N 39 deg. 54 min. 58.061 secs.		Long: W 108.34 deg. OR W -109 deg. 39 min. 36.292 secs.	
Contractor: CYCLONE 29	Rig/Platform Name/Num: CYCLONE 29		
Job Purpose: Cement Multiple Stages			Ticket Amount:
Well Type: Development Well	Job Type: Cement Multiple Stages		
Sales Person: MAYO, MARK	Srvc Supervisor: DEUSSEN, EDWARD	MBU ID Emp #: 485182	

Activity Description	Date/Time	Cht #	Rate bbl/min	Volume bbl		Pressure psig		Comments
				Stage	Total	Tubing	Casing	
Call Out	10/30/2012 10:30							ORIGINALLY CALLED AT 08:30
Pre-Convoy Safety Meeting	10/31/2012 00:15							ALL HES PERSONNEL
Crew Leave Yard	10/31/2012 00:30							1 ELITE, 2 660s, 1 PICKUP
Arrive At Loc	10/31/2012 03:30							RIG STILL PULLING DRILL PIPE
Assessment Of Location Safety Meeting	10/31/2012 03:45							
Pre-Rig Up Safety Meeting	10/31/2012 06:15							ALL HES PERSONNEL
Rig-Up Equipment	10/31/2012 06:30							1 HARD LINE TO FLOOR, 2 WATER LINES TO UPRIGHT AND DAY TANK, BULK HOSES TO SILOS AND 660
Pre-Job Safety Meeting	10/31/2012 08:15							
Start Job	10/31/2012 08:36							TD 3638, TP 3636, SJ 27.8, MW 9.6, OH 14 3/4" TO 1530', OH 13 1/2" TO 3638, CSG 9 5/8", 36# J-55, MSC TOOL SET @ 1581'
Pump Water	10/31/2012 08:37		2	2			197.0	FILL LINES
Pressure Test	10/31/2012 08:40							PRESSURED UP TO 3103 PSI - PRESSURE HELD WELL
Pump Spacer 1	10/31/2012 08:43		6	20			310.0	FRESH WATER SPACER
Pump Lead Cement	10/31/2012 08:56		8	162.3			575.0	515 SKS, 12.8 PPG, 1.77 YIELD, 9.34 GAL/SK

Sold To #: 300721

Ship To #: 2960707

Quote #:

Sales Order #:

9928297

SUMMIT Version: 7.3.0045

Tuesday, November 13, 2012 10:37:00

Activity Description	Date/Time	Cht #	Rate bbl/min	Volume bbl		Pressure psig		Comments
				Stage	Total	Tubing	Casing	
Pump Tail Cement	10/31/2012 09:16		6	55.9			280.0	160 SKS, 12.8 PPG, 1.96 YIELD, 10.95 GAL/SK
Shutdown	10/31/2012 09:26							
Drop Top Plug	10/31/2012 09:31							RIG SUPPLIED WIPER DART
Pump Displacement	10/31/2012 09:35		10	278.9			1030.0	FRESH WATER - SLOW RATE THRU TOOL
Slow Rate	10/31/2012 10:07		4	10			680.0	
Bump Plug	10/31/2012 10:10						704.0	
Check Floats	10/31/2012 10:10							FLOATS HELD - GOT 1 BBL BACK
Drop Opening Device For Multiple Stage Cementer	10/31/2012 10:14							WAIT 10 MINUTES
Pump Spacer	10/31/2012 10:24		6	20			207.0	TOOL OPENED
Pump Tail Cement	10/31/2012 10:32		8	228.6			515.0	655 SACKS, 12.8 PPG, 1.96 YIELD, 10.95 GAL/SK - GOT 35 BBLS 1ST STAGE CEMENT BACK TO SURFACE
Shutdown	10/31/2012 11:00							
Drop Top Plug	10/31/2012 11:03							
Pump Displacement	10/31/2012 11:04		10	122.2			740.0	FRESH WATER
Slow Rate	10/31/2012 11:17		4	10			460.0	
Bump Plug	10/31/2012 11:19						468.0	
Other	10/31/2012 11:20							RELEASE PRESSURE / GOT 40 BBLS CEMENT TO SURFACE
Call Out	10/31/2012 11:30							2ND CREW CALLED OUT TO RELIEF PRIMARY CREW AT 0800
Arrive At Loc	10/31/2012 12:00							
Rig-Up Equipment	10/31/2012 12:10							EQUIPMENT RIGGED UP
Pre-Job Safety Meeting	10/31/2012 12:25							WITH ALL PERSONNEL ON LOCATION

Cementing Job Log

Activity Description	Date/Time	Cht #	Rate bbl/min	Volume bbl		Pressure psig		Comments
				Stage	Total	Tubing	Casing	
Start Job	10/31/2012 12:35							TOPOUT PREVIOUS WELLS (TOPOUT #1)
Other	10/31/2012 12:36		1	1			67.0	FILL LINES WITH FRESH WATER
Shutdown	10/31/2012 12:37							SHUTDOWN TO MIX TUB OF CEMENT
Pump Cement	10/31/2012 12:45		1	24			75.0	117 SKS AT 15.8 PPG, 1.15 FT3/SK, 5.01 GAL/SK. TOPPED OUT WELL# 343
Shutdown	10/31/2012 13:10							SHUTDOWN TO SWAP OVER TO NEXT WELL
Pump Cement	10/31/2012 13:11		1	18			71.0	123 SKS AT 15.8 PPG, 1.15 FT3/SK, 5.01 GAL/SK. TOPPED OUT WELL# 523.
Shutdown	10/31/2012 13:29							SHUTDOWN AT 18 BBL AWAY ON CEMENT DUE TO POOR CEMENT DELIVERY
Resume	10/31/2012 13:32		1	7.2			71.0	RESUME PUMPING CEMENT
Shutdown	10/31/2012 13:40				25.2			SHUTDOWN TO SWAP OVER TO NEXT WELL
Pump Cement	10/31/2012 13:42		1	9.5			70.0	47 SKS AT 15.8 PPG, 1.15 FT3/SK, 5.01 GAL/SK. TOPPED OUT WELL# 344.
Shutdown	10/31/2012 13:52							SHUTDOWN TO SWAP OVER TO NEXT WELL
Pump Cement	10/31/2012 13:54		1	7.2			67.0	35 SKS AT 15.8 PPG, 1.15 FT3/SK, 5.01 GAL/SK. TOPPED OUT WELL# 544.
Shutdown	10/31/2012 14:03							SHUTDOWN COMPANY REP REQUESTED MORE CEMENT TO FINISH JOB. HES USED ALL 350 FROM FIRST TRUCK
End Job	10/31/2012 14:04							
Start Job	10/31/2012 18:54							FINISH TOPOUT OF PREVIOUS WELLS (TOPOUT #2)
Other	10/31/2012 18:55		1	1			.0	PUMP FRESH WATER AHEAD TO CLEAR LINES

Sold To # : 300721

Ship To # :2960707

Quote # :

Sales Order # :

9928297

SUMMIT Version: 7.3.0045

Tuesday, November 13, 2012 10:37:00

Activity Description	Date/Time	Cht #	Rate bbl/ min	Volume bbl		Pressure psig		Comments
				Stage	Total	Tubing	Casing	
Shutdown	10/31/2012 18:56							SHUTDOWN TO MIX UP TUB OF CEMENT
Pump Cement	10/31/2012 19:03		1	4.7			10.0	23 SKS AT 15.8 PPG, 1.15 FT3/SK, 5.01 GAL/SK. TOPPED OUT WELL# 544.
Shutdown	10/31/2012 19:08							SHUTDOWN TO SWAP OVER TO NEXT WELL
Pump Cement	10/31/2012 19:09		1	1.8			10.0	9 SKS AT 15.8 PPG, 1.15 FT3/SK, 5.01 GAL/SK. TOPPED OUT WELL# 344.
Shutdown	10/31/2012 19:11							SHUTDOWN TO SWAP OVER TO NEXT WELL
Pump Cement	10/31/2012 19:12		1	3.2			10.0	16 SKS AT 15.8 PPG, 1.15 FT3/SK, 5.01 GAL/SK. TOPPED OUT WELL# 523.
Shutdown	10/31/2012 19:16							SHUTDOWN TO SWAP OVER TO NEXT WELL
Pump Cement	10/31/2012 19:18		1	5.2			10.0	25 SKS AT 15.8 PPG, 1.15 FT3/SK, 5.01 GAL/SK. TOPPED OUT WELL# 343.
Shutdown	10/31/2012 19:24							SHUTDOWN TO SWAP OVER TO NEXT WELL
Pump Cement	10/31/2012 19:26		1	7.5			10.0	37 SKS AT 15.8 PPG, 1.15 FT3/SK, 5.01 GAL/SK. TOPPED OUT WELL# 433.
Shutdown	10/31/2012 19:34							ALL PREVIOUS WELLS TOPPED OFF HES USED 110 SKS OF SECOND TOPOUT TRUCK
End Job	10/31/2012 19:35							HES USED 70 LBS SUGAR FOR JOB.
Pre-Rig Down Safety Meeting	10/31/2012 19:40							WITH ALL HES PERSONNEL
Rig-Down Equipment	10/31/2012 19:50							
Pre-Convoy Safety Meeting	10/31/2012 21:20							WITH ALL HES PERSONNEL
Crew Leave Location	10/31/2012 21:30							
Activity Description	Date/Time	Cht #	Rate bbl/ min	Volume bbl		Pressure psig		Comments
				Stage	Total	Tubing	Casing	

HALLIBURTON

Cementing Job Log

Comment	10/31/2012 21:31							THANK YOU FOR USING HALLIBURTON CEMENT DEPARTMENT. JESSE SLAUGHTER, ED DUESSEN AND CREWS.
---------	---------------------	--	--	--	--	--	--	---

Sold To # : 300721

Ship To # :2960707

Quote # :

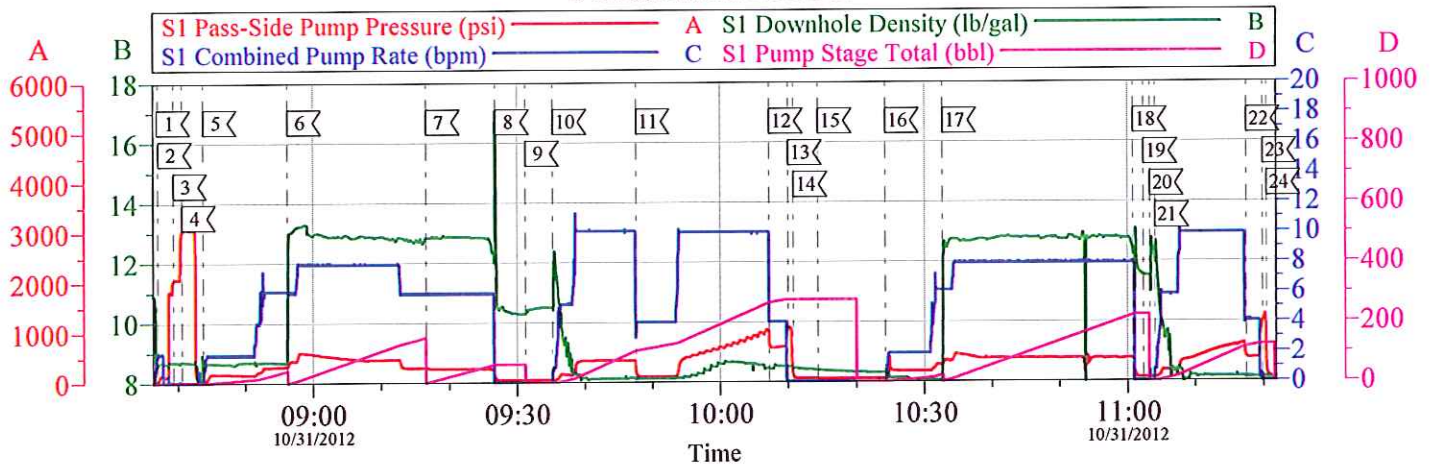
Sales Order # : 9928297

SUMMIT Version: 7.3.0045

Tuesday, November 13, 2012 10:37:00

WPX - RGU 433-36-198

9 5/8 SURFACE 2 STAGE



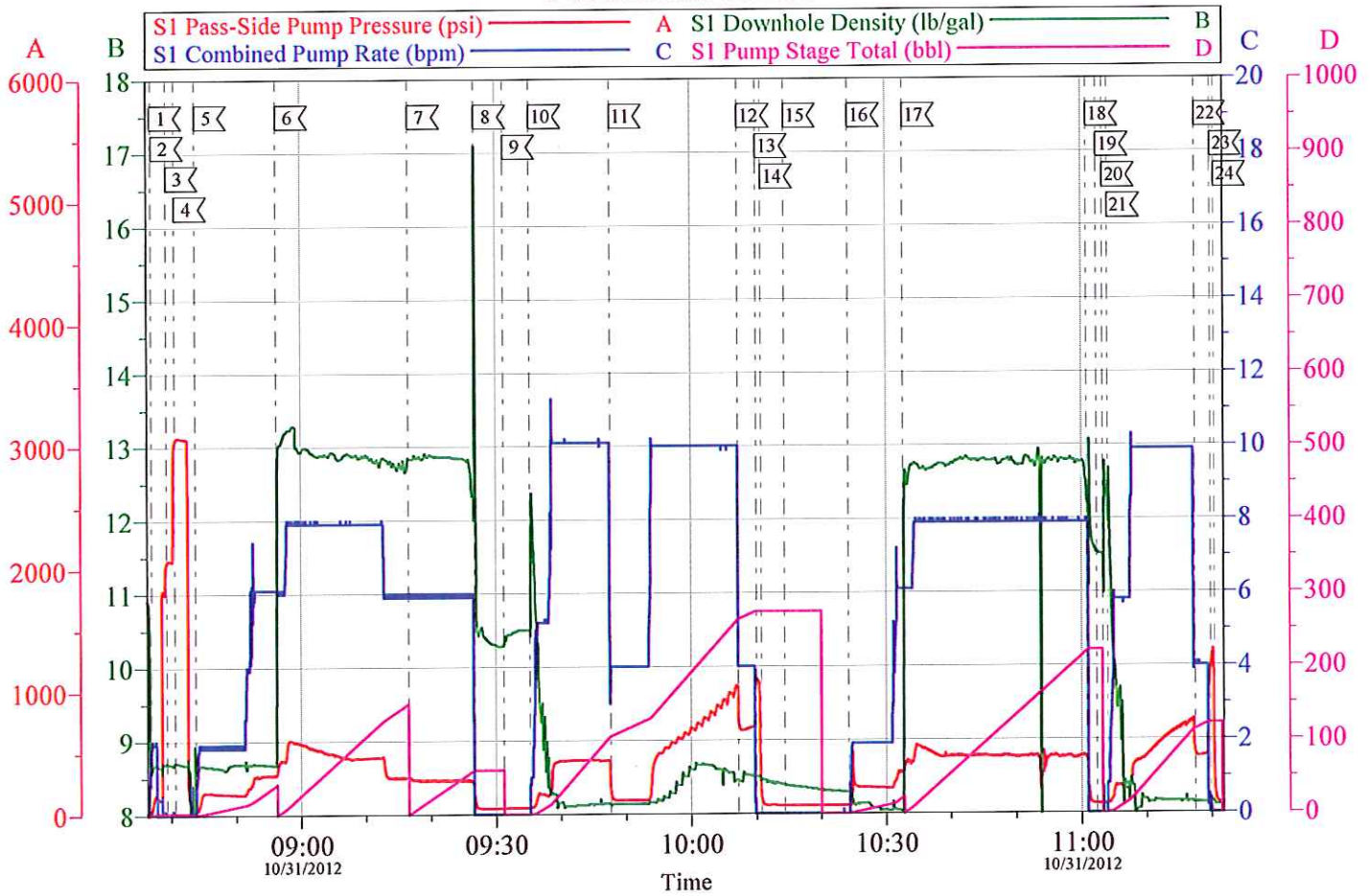
Local Event Log					
1	START JOB	08:36:54	2	FILL LINES	08:37:06
3	5TH GEAR STALLOUT	08:39:20	4	PRESSURE TEST	08:40:39
5	PUMP H2O SPACER	08:43:47	6	PUMP LEAD CEMENT	08:56:14
7	PUMP TAIL CEMENT	09:16:36	8	SHUTDOWN	09:26:48
9	DROP WIPER DART	09:31:13	10	PUMP DISPLACEMENT	09:35:16
11	SLOW RATE THRU TOOL	09:47:37	12	SLOW RATE	10:07:12
13	BUMP PLUG	10:10:00	14	CHECK FLOATS	10:10:48
15	DROP MSC OPENING DEVICE	10:14:22	16	PUMP SPACER/OPEN TOOL	10:24:14
17	PUMP 2ND STAGE TAIL	10:32:41	18	SHUTDOWN	11:00:49
19	WASH UP PUMP	11:02:22	20	DROP TOP PLUG	11:03:18
21	PUMP DISPLACEMENT	11:04:02	22	SLOW RATE	11:17:24
23	BUMP PLUG	11:19:52	24	RELEASE PRESSURE	11:20:25

Customer: WPX	Job Date: 31-Oct-2012	Sales Order #: 9928297
Well Description: RGU 433-36-198	Job Type: SURFACE	ADC Used: YES
Company Rep: ANDREW BRUNK	Cement Supervisor: ED DEUSSEN	Elite #7: ANDREW LINN

OptiCem v6.4.10
31-Oct-12 11:53

WPX - RGU 433-36-198

9 5/8 SURFACE 2 STAGE

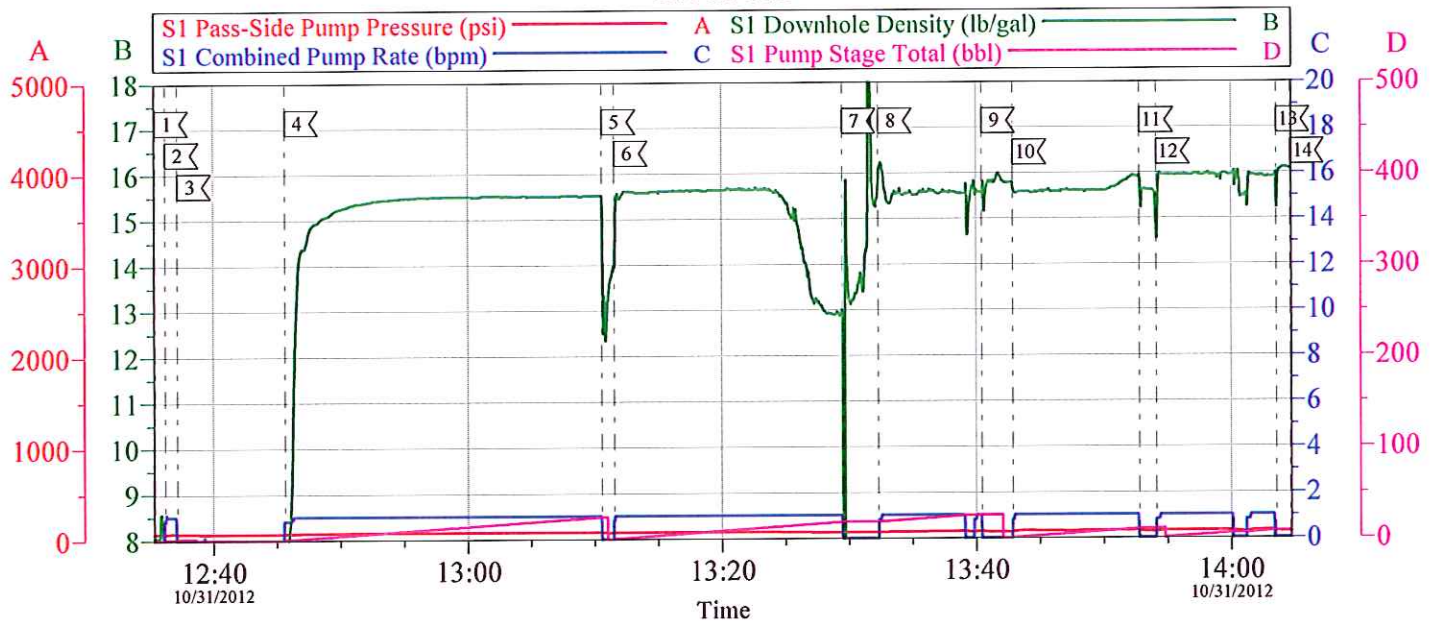


Customer: WPX	Job Date: 31-Oct-2012	Sales Order #: 9928297
Well Description: RGU 433-36-198	Job Type: SURFACE	ADC Used: YES
Company Rep: ANDREW BRUNK	Cement Supervisor: ED DEUSSEN	Elite #7: ANDREW LINN

OptiCem v6.4.10
31-Oct-12 11:54

WPX RGU 433-36-198

TOPOUT #1



Local Event Log

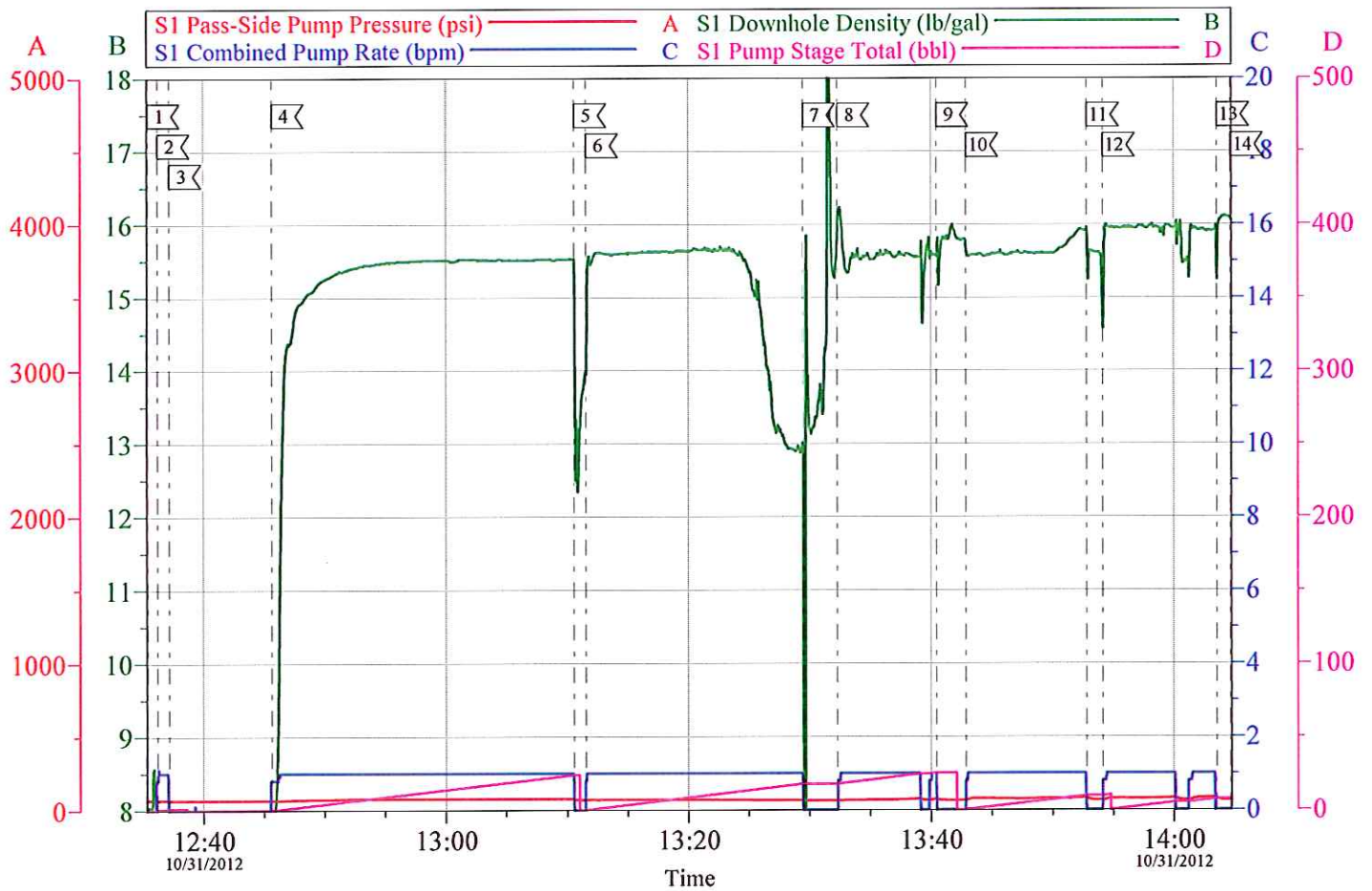
1	START JOB	12:35:23	2	PUMP H2O AHEAD	12:36:11
3	SHUTDOWN TO MIX UP TUB OF CEMENT	12:37:10	4	PUMP CEMENT WELL # 343	12:45:38
5	SHUTDOWN	13:10:34	6	PUMP CEMENT WELL # 523	13:11:32
7	SHUTDOWN POOR CEMENT DELIVERY	13:29:27	8	RESUME PUMPING	13:32:18
9	SHUTDOWN	13:40:27	10	PUMP CEMENT WELL # 344	13:42:54
11	SHUTDOWN	13:52:49	12	PUMP CEMENT WELL # 544	13:54:08
13	SHUTDOWN	14:03:34	14	END JOB	14:04:43

Customer: WPX	Job Date: 31-Oct-2012	Sales Order #: 9928297
Well Description: RGU 433-36-198	Job Type: TOPOUT #1	ADC Used: YES
Customer Rep: ANDREW BRUNK	Cement Supervisor: JESSE SLAUGHTER	Elite #7: DUSTIN HYDE

OptiCem v6.4.10
31-Oct-12 14:31

WPX RGU 433-36-198

TOPOUT #1

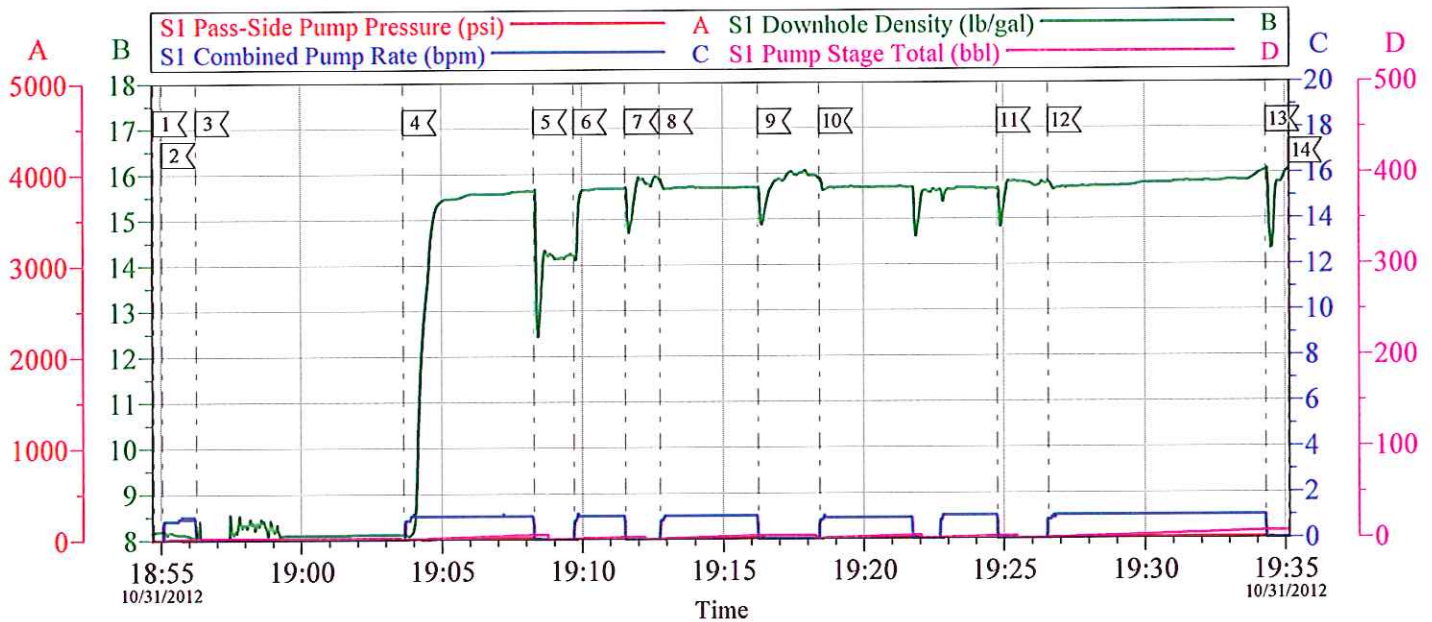


Customer: WPX	Job Date: 31-Oct-2012	Sales Order #: 9928297
Well Description: RGU 433-36-198	Job Type: TOPOUT #1	ADC Used: YES
Customer Rep: ANDREW BRUNK	Cement Supervisor: JESSE SLAUGHTER	Elite #7: DUSTIN HYDE

OptiCem v6.4.10
31-Oct-12 14:43

WPX RGU 433-36-198

TOPOUT #2



Local Event Log

[1] START JOB	18:54:45	[2] PUMP H2O AHEAD	18:55:03
[3] SHUTDOWN TO MIX TUB OF CEMENT	18:56:16	[4] PUMP CEMENT WELL # 544	19:03:38
[5] SHUTDOWN	19:08:16	[6] PUMP CEMENT WELL # 344	19:09:43
[7] SHUTDOWN	19:11:33	[8] PUMP CEMENT WELL # 523	19:12:46
[9] SHUTDOWN	19:16:16	[10] PUMP CEMENT WELL # 343	19:18:26
[11] SHUTDOWN	19:24:46	[12] PUMP CEMENT WELL # 433	19:26:35
[13] SHUTDOWN	19:34:19	[14] END JOB	19:35:07

Customer: WPX
Well Description: RGU 433-36-198
Customer Rep: TED RAGSDALE

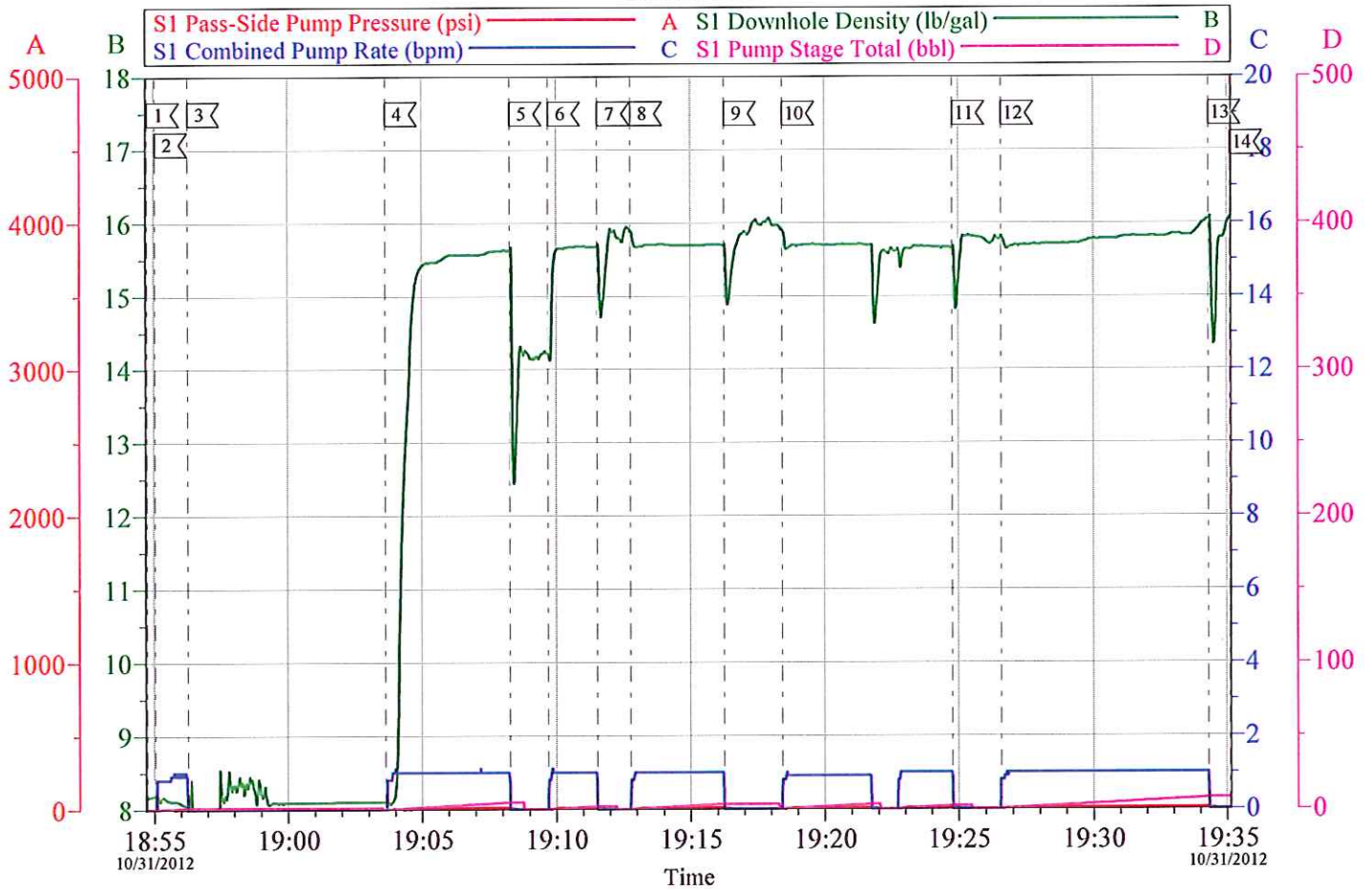
Job Date: 31-Oct-2012
Job Type: TOPOUT #2
Cement Supervisor: JESSE SLAUGHTER

Sales Order #: 9928297
ADC Used: YES
Elite #: DUSTIN HYDE

OptiCem v6.4.10
31-Oct-12 19:48

WPX RGU 433-36-198

TOPOUT #2

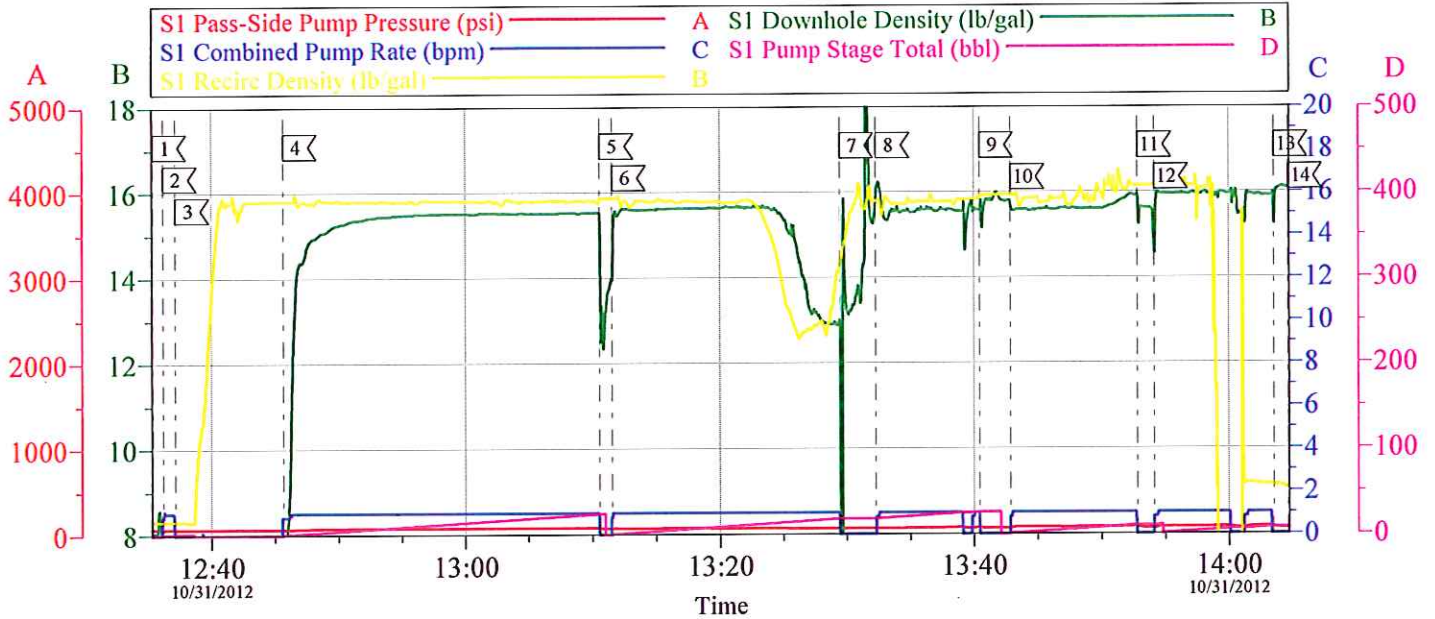


Customer: WPX	Job Date: 31-Oct-2012	Sales Order #: 9928297
Well Description: RGU 433-36-198	Job Type: TOPOUT #2	ADC Used: YES
Customer Rep: TED RAGSDALE	Cement Supervisor: JESSE SLAUGHTER	Elite #7: DUSTIN HYDE

OptiCem v6.4.10
31-Oct-12 19:49

WPX RGU 433-36-198

TOPOUT #1



Local Event Log

1	START JOB	12:35:23	2	PUMP H2O AHEAD	12:36:11
3	SHUTDOWN TO MIX UP TUB OF CEMENT	12:37:10	4	PUMP CEMENT WELL # 343	12:45:38
5	SHUTDOWN	13:10:34	6	PUMP CEMENT WELL # 523	13:11:32
7	SHUTDOWN POOR CEMENT DELIVERY	13:29:27	8	RESUME PUMPING	13:32:18
9	SHUTDOWN	13:40:27	10	PUMP CEMENT WELL # 344	13:42:54
11	SHUTDOWN	13:52:49	12	PUMP CEMENT WELL # 544	13:54:08
13	SHUTDOWN	14:03:34	14	END JOB	14:04:43

Customer: WPX	Job Date: 31-Oct-2012	Sales Order #: 9928297
Well Description: RGU 433-36-198	Job Type: TOPOUT #1	ADC Used: YES
Customer Rep: ANDREW BRUNK	Cement Supervisor: JESSE SLAUGHTER	Elite #7: DUSTIN HYDE

OptiCem v6.4.10
31-Oct-12 14:43