

**GULFPORT ENERGY CORP EBIZ  
DO NOT MAIL-14313 N MAY AVE STE 10  
ATTENTION ACCOUNTS PAYABLE  
OKLAHOMA CITY, Oklahoma**

Ridgeview 32-16-1

DHS 6

## **Post Job Summary** **Cement Surface Casing**

Date Prepared: September 18, 2012  
Version: 1

Service Supervisor: KELEHER, JASON

Submitted by: Laura Burnett

**HALLIBURTON**

# HALLIBURTON

## Wellbore Geometry

Job Tubulars					MD		TVD		Excess	Shoe Joint Length
Type	Description	Size in	ID in	Wt lbm/ft	Top ft	Bottom ft	Top ft	Bottom ft	%	ft
Open Hole Section	Surface Open Hole		12.250		0.00	890.00	0.00	890.00	80.00	0.00
Casing	Surface Casing	9.63	8.921	36.00	0.00	886.00	0.00	886.00		42.00

## Pumping Schedule

Fluid #	Fluid Type	Fluid Name	Density lbm/gal	Avg Rate bbl/min	Volume
1	Spacer	Fresh Water	8.33	3.00	20.0 bbl
2	Cement Slurry	VariCem V1	12.30	5.00	175.0 sacks
3	Cement Slurry	VariCem V1 Tail	13.50	5.00	80.0 sacks
4	Spacer	Displacement	8.40	3.00	65.0 bbl
5	Cement Slurry	HalCem Top Out	15.60	1.00	65.0 sacks

## Fluids Pumped

**Stage/Plug # 1      Fluid 1:**      Fresh Water

Fluid Density: 8.33 lbm/gal  
 Fluid Volume: 20.00 bbl  
 Pump Rate: 3.00 bbl/min

**Stage/Plug # 1      Fluid 2:**      VariCem V1

0.125 lbm      Poly-E-Flake

Fluid Weight: 12.30 lbm/gal  
 Slurry Yield: 2.24 ft<sup>3</sup>/sack  
 Total Mixing Fluid: 12.95 Gal  
 Sacks: 175.0 sacks  
 Calculated Fill: 680.00 ft  
 Calculated Top of Fluid: 0.00 ft

# HALLIBURTON

**Stage/Plug # 1      Fluid 3:**      VariCem V1 Tail  
VARICEM (TM) CEMENT  
0.125 lbm      Poly-E-Flake

Fluid Weight: 13.50 lbm/gal  
Slurry Yield: 1.72 ft<sup>3</sup>/sack  
Total Mixing Fluid: 9.07 Gal  
Sacks: 80.0 sacks  
Calculated Fill: 200.00 ft  
Calculated Top of Fluid: 680.00 ft

**Stage/Plug # 1      Fluid 4:**      Displacement

Fluid Density: 8.40 lbm/gal  
Fluid Volume: 65.00 bbl  
Pump Rate: 3.00 bbl/min

**Stage/Plug # 1      Fluid 5:**      HalCem Top Out  
HALCEM (TM) SYSTEM  
2 %      Calcium Chloride

Fluid Weight: 15.60 lbm/gal  
Slurry Yield: 1.20 ft<sup>3</sup>/sack  
Total Mixing Fluid: 5.26 Gal  
Sacks: 65.0 sacks

## ***Job Summary***

---

### **Job Information**

<b>Job Start Date</b>	9/8/2012 6:44:00 PM
<b>Job MD</b>	886.0 ft
<b>Job TVD</b>	890.0 ft
<b>Mud Type</b>	Water Based Mud
<b>Actual Mud Density</b>	9 lbm/gal
<b>Calculated Displacement</b>	64.94 bbl

# HALLIBURTON

## Service Supervisor Reports

### Job Log

Date/Time	Activity Code	Pump Rate	Volume	Pressure (psig)	Comments
09/08/2012 13:00	Arrive at Location from Service Center				
09/08/2012 13:30	Assessment Of Location Safety Meeting				
09/08/2012 18:44	Test Lines				PRESSURE TEST TO 2000 PSI
09/08/2012 18:48	Pump Spacer 1	3	20	46.0	RIG WATER
09/08/2012 18:56	Pump Lead Cement	5	69	100.0	175 SKS CEMENT MIXED AT 12.3 PPG WITH RIG WATER
09/08/2012 19:12	Pump Tail Cement	5	24	144.0	80 SKS CEMENT MIXED AT 13.5 PPG WITH RIG WATER
09/08/2012 19:17	Shutdown				
09/08/2012 19:21	Drop Top Plug				
09/08/2012 19:22	Pump Displacement	3	65	222.0	RIG WATER
09/08/2012 19:40	Bump Plug			860.0	GOOD RETURNS THROUGHOUT JOB
09/08/2012 19:41	Check Floats			881.0	FLOATS HELD. .5 BBL BACK
09/08/2012 19:42	Shutdown				WAIT MINIMUM OF 1 HOUR AND CHECK CEMENT
09/08/2012 21:06	Pump Cement	1	10	67.0	50 SKS G NEAT WITH CALCIUM CHLORIDE ADDED MIXED AT 15.8 PPG WITH RIG WATER. DISPLACED .5 BBL OF WATER
09/08/2012 21:21	Shutdown				WAIT 2 HOURS AND CHECK CEMENT TOP
09/08/2012 23:42	Pump Cement	1	3	43.0	15 SKS G NEAT MIXED AT 15.8 PPG WITH RIG WATER. DISPLACED .5 BBL WATER
09/08/2012 23:47	Shutdown				2 BBL CEMENT BACK TO SURFACE
09/08/2012 23:50	End Job				

## The Road to Excellence Starts with Safety

Sold To #: 315639	Ship To #: 2949873	Quote #:	Sales Order #: 9795847
Customer: GULFPORT ENERGY CORP EBIZ	Customer Rep: ., KELLY		
Well Name: Ridgeview	Well #: 32-16-1	API/UWI #:	
Field:	City (SAP): CRAIG	County/Parish: Moffat	State: Colorado
Legal Description: Section 16 Township 6N Range 91W			
Contractor: DHS	Rig/Platform Name/Num: 6		
Job Purpose: Cement Surface Casing			
Well Type: Exploratory / Wildcat Job Type: Cement Surface Casing			
Sales Person: SCOTT, KYLE	Srvc Supervisor: KELEHER, JASON	MBU ID Emp #:	437348

## Job Personnel

HES Emp Name	Exp Hrs	Emp #	HES Emp Name	Exp Hrs	Emp #	HES Emp Name	Exp Hrs	Emp #
BONE, JEFFERSON Eldon	12.0	491216	FECHNER, NATHAN John Larry	12.0	497785	KELEHER, JASON	12.0	437348
WILKISON, KEVIN Diverne	12.0	491065						

## Equipment

HES Unit #	Distance-1 way	HES Unit #	Distance-1 way	HES Unit #	Distance-1 way	HES Unit #	Distance-1 way
10572545	120 mile	10783493	120 mile	10948690	120 mile	10991613	120 mile
11062230	120 mile	11076824	120 mile	11138984	120 mile	11139326	120 mile

## Job Hours

Date	On Location Hours	Operating Hours	Date	On Location Hours	Operating Hours	Date	On Location Hours	Operating Hours
TOTAL								

Total is the sum of each column separately

## Job

Formation Name	Top	Bottom	Called Out	Date	Time	Time Zone
Formation Depth (MD)			On Location	08 - Sep - 2012	08:30	MST
Form Type		BHST	Job Started	08 - Sep - 2012	13:00	MST
Job depth MD	890. ft	Job Depth TVD	Job Started	08 - Sep - 2012	18:44	MST
Water Depth		Wk Ht Above Floor	Job Completed	08 - Sep - 2012	23:50	GMT
Perforation Depth (MD)	From	To	Departed Loc	09 - Sep - 2012	01:00	MST

## Well Data

Description	New / Used	Max pressure psig	Size in	ID in	Weight lbm/ft	Thread	Grade	Top MD ft	Bottom MD ft	Top TVD ft	Bottom TVD ft
Surface Open Hole				12.25				.	890.		
Surface Casing	Unknown		9.625	8.921	36.		J-55	.	886.		

## Tools and Accessories

Type	Size	Qty	Make	Depth	Type	Size	Qty	Make	Depth	Type	Size	Qty	Make
Guide Shoe					Packer					Top Plug			
Float Shoe					Bridge Plug					Bottom Plug			
Float Collar					Retainer					SSR plug set			
Insert Float										Plug Container			
Stage Tool										Centralizers			

## Miscellaneous Materials

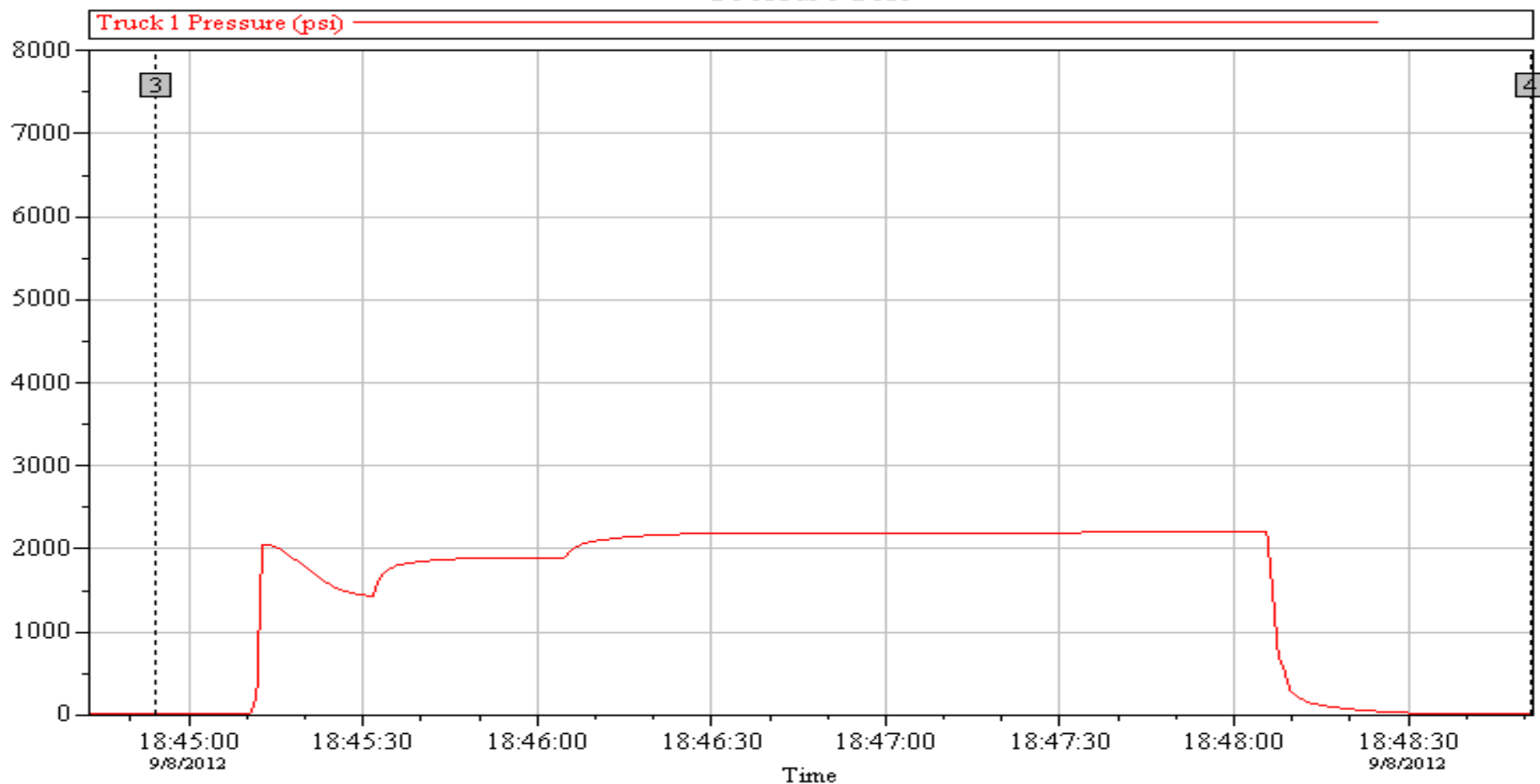
Gelling Agt	Conc	Surfactant	Conc	Acid Type	Qty	Conc	%
Treatment Fld	Conc	Inhibitor	Conc	Sand Type	Size	Qty	

Fluid Data									
Stage/Plug #: 1									
Fluid #	Stage Type	Fluid Name	Qty	Qty uom	Mixing Density lbm/gal	Yield ft <sup>3</sup> /sk	Mix Fluid Gal/sk	Rate bbl/min	Total Mix Fluid Gal/sk
1	Fresh Water		20.00	bbl	8.33	.0	.0	.0	
2	VariCem V1	VARICEM (TM) CEMENT (452009)	175.0	sacks	12.3	2.24	12.95		12.95
	0.125 lbm	POLY-E-FLAKE (101216940)							
	12.954 Gal	FRESH WATER							
3	VariCem V1 Tail	VARICEM (TM) CEMENT (452009)	80.0	sacks	13.5	1.72	9.07		9.07
	0.125 lbm	POLY-E-FLAKE (101216940)							
	9.065 Gal	FRESH WATER							
4	Displacement		65.00	bbl	8.4	.0	.0	.0	
5	HalCem Top Out	HALCEM (TM) SYSTEM (452986)	65.0	sacks	15.6	1.2	5.26		5.26
	2 %	CALCIUM CHLORIDE - HI TEST PELLET (100005053)							
	5.26 Gal	FRESH WATER							
Calculated Values		Pressures		Volumes					
Displacement		Shut In: Instant		Lost Returns		Cement Slurry		Pad	
Top Of Cement		5 Min		Cement Returns		Actual Displacement		Treatment	
Frac Gradient		15 Min		Spacers		Load and Breakdown		Total Job	
Rates									
Circulating		Mixing		Displacement		Avg. Job			
Cement Left In Pipe	Amount	42 ft	Reason	Shoe Joint					
Frac Ring # 1 @	ID		Frac ring # 2 @	ID		Frac Ring # 3 @	ID	Frac Ring # 4 @	ID
The Information Stated Herein Is Correct				Customer Representative Signature					

# HALLIBURTON

## Data Acquisition

### GULFPORT, RIDGEVIEW 32-16-1, SURFACE Pressure Test



Customer: GULFPORT  
Job Description: SURFACE  
Service Supervisor: JASON KELEHER

Job Date: 08-Sep-2012  
UWI:  
Service Operator: JEFF BONE

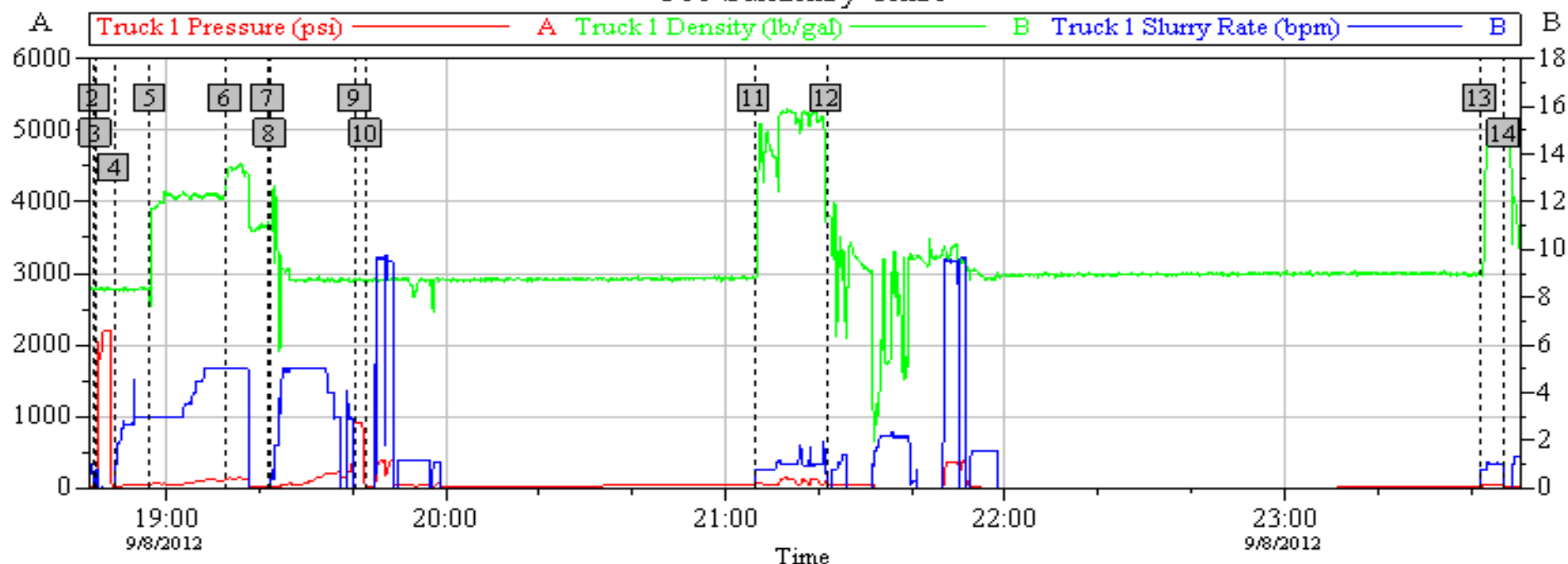
Sales Order #: 9791047  
Est #: 11074824  
Service Leader:

OptiCem v6.4.10  
08-Sep-12 18:52

# HALLIBURTON

## GULFPORT, RIDGEVIEW 32-16-1, SURFACE

### Job Summary Chart



### Global Event Log

1 Starting Job	18:03:25	2 Start Job	18:44:35	3 Test Lines	18:44:54
4 Pump Spacer 1	18:48:51	5 Pump Lead Cement	18:56:28	6 Pump Tail Cement	19:12:43
7 Drop Top Plug	19:21:58	8 Pump Displacement	19:22:24	9 Bump Plug	19:40:36
10 Shutdown	19:42:56	11 Pump Cement	21:06:10	12 Shutdown	21:21:45
13 Pump Cement	23:42:07	14 Shutdown	23:47:09	15 End Job	00:00:43
16 Ending Job	00:16:07				

Customer: GULFPORT  
Job Description: SURFACE  
Service Supervisor: JASON KLEFFNER

Job Date: 08-Sep-2012  
UWI:  
Service Operator: JEFF BONE

Sales Order #: 9791847  
Est #: 11074824  
Service Leader:

OptiCem v6.4.10  
09-Sep-12 00:19



# HALLIBURTON

## Lab Data

### LAB RESULTS - Lead

#### Job Information

<b>Request/Slurry</b>	269949/1	<b>Rig Name</b>	DHS DRILLING #6	<b>Date</b>	07/SEP/2012
<b>Submitted By</b>	Thomas Stumpf	<b>Job Type</b>	Surface Casing	<b>Bulk Plant</b>	Vernal
<b>Customer</b>	Gulfport Energy Corp.	<b>Location</b>	Moffat	<b>Well</b>	RIDGEVIEW 32-16-1

#### Well Information

<b>Casing/Liner Size</b>	9 5/8"	<b>Depth MD</b>	800 ft	<b>BHST</b>	93 F
<b>Hole Size</b>	12 1/4"	<b>Depth TVD</b>	0 ft	<b>BHCT</b>	81 F

#### Cement Information - Lead Design

<u>Conc</u>	<u>UOM</u>	<u>Cement/Additive</u>	<u>Sample Type</u>	<u>Sample Date</u>	<u>Lot No.</u>	<b>Cement Properties</b>		
		<b>VariCem</b>				Slurry Density	12.30	PPG
						Slurry Yield	2.25	ft3/sk
100.00	% BWOC	Holcim Type III	Bulk	Sep 08, 2012	10001229	Water Requirement	13.12	GPS
13.12	gal/sack	Fresh Water	Lab	Mar 08, 2012	3/8/12	Total Mix Fluid	13.12	GPS
0.125	lb/sk	Pol-E-Flake	Bulk	Sep 08, 2012	4/10/2012			

#### Operation Test Results Request ID 269949/1

##### Thickening Time, Request Test ID:2901494

Temp (°F)	Pressure (psi)	Reached in (min)	Start BC	30 Bc (hh:mm)	50 Bc (hh:mm)	70 Bc (hh:mm)	100 Bc (hh:mm)
80	700	13	8	03:22	04:03	04:26	04:48

##### Mixability (0 - 5) - 0 is not mixable, Request Test ID:2901490

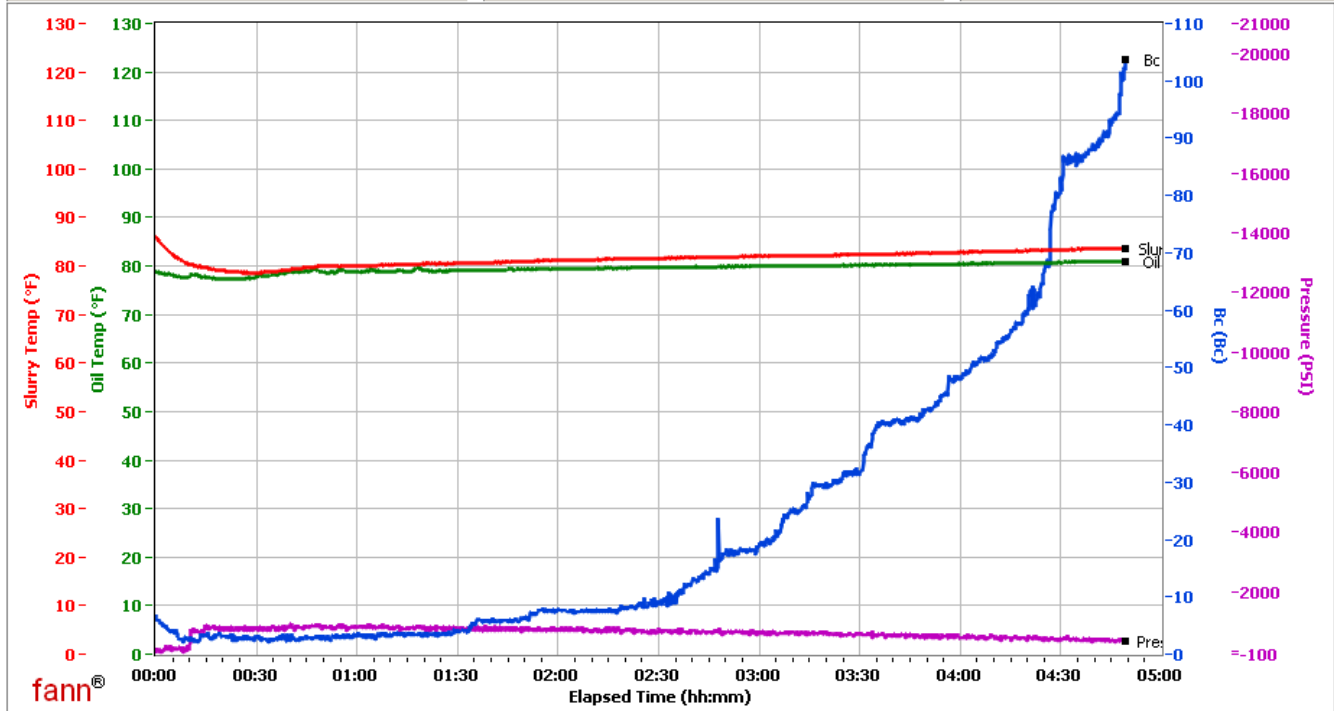
Mixability rating (0 - 5)

5

# HALLIBURTON

## VERNAL

Fields	Values	Fields	Values	Events	Results
Project Name	GULFPORT 269949-1	Job Type	LEAD	30.00 Bc	03h:22m
Test ID	269949-1	Cement Type	HOLCIM III	50.00 Bc	04h:03m
Request ID	9	Cement Weight	Light Weight	70.00 Bc	04h:26m
Tested by	RR	Test Date	09/08/12	100.00 Bc	04h:48m
Customer	GULFPORT	Test Time	07:59 AM	00h:30m	3.16
Well No	RIDGEVIEW 32-16-1	Temp. Units	degF	01h:00m	3.03
Rig	DHD 6	Pressure Units	PSI	01h:30m	4.24
Casing/Liner Size		SW Version	2.0.1.1021	02h:00m	7.73



Data File O:\HPHT Data Files\Vernal Consistometer #9\GULFPORT 269949-1.tdms

Comments

# HALLIBURTON

## LAB RESULTS - Tail

### Job Information

<b>Request/Slurry</b>	269951/1	<b>Rig Name</b>	DHS DRILLING #6	<b>Date</b>	07/SEP/2012
<b>Submitted By</b>	Thomas Stumpf	<b>Job Type</b>	Surface Casing	<b>Bulk Plant</b>	Vernal
<b>Customer</b>	Gulfport Energy Corp.	<b>Location</b>	Moffat	<b>Well</b>	RIDGEVIEW 32-16-1

### Well Information

<b>Casing/Liner Size</b>	9 5/8"	<b>Depth MD</b>	800 ft	<b>BHST</b>	93 F
<b>Hole Size</b>	12 1/4"	<b>Depth TVD</b>	0 ft	<b>BHCT</b>	81 F

### Cement Information - Lead Design

<u>Conc</u>	<u>UOM</u>	<u>Cement/Additive</u>	<u>Sample Type</u>	<u>Sample Date</u>	<u>Lot No.</u>	<u>Cement Properties</u>		
		VariCem				Slurry Density	13.50	PPG
						Slurry Yield	1.73	ft3/sk
100.00	% BWOC	Holcim Type III	Bulk	Sep 08, 2012	1000122 29	Water Requirement	9.2	GPS
						Total Mix Fluid	9.2	GPS
0.125	lb/sk	Pol-E-Flake	Bulk	Sep 08, 2012	4/10/201 2			
9.20	gal/sack	Fresh Water	Lab	Mar 08, 2012	3/8/12			

### Operation Test Results Request ID 269951/1

#### Thickening Time, Request Test ID:2901502

Temp (°F)	Pressure (psi)	Reached in (min)	Start BC	30 Bc (hh:mm)	50 Bc (hh:mm)	70 Bc (hh:mm)	100 Bc (hh:mm)
80	700	13	16	01:45	02:09	02:10	02:10

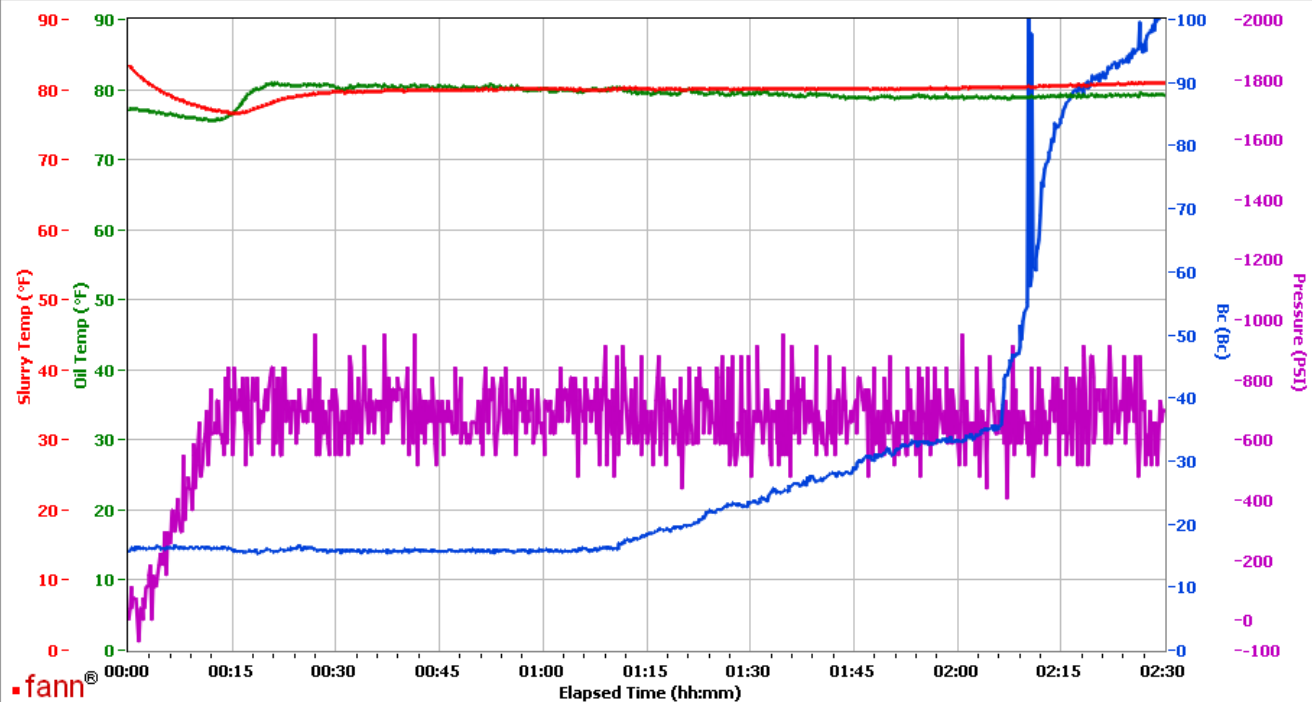
#### Mixability (0 - 5) - 0 is not mixable, Request Test ID:2901503

Mixability rating (0 - 5)

5

## VERNAL

Fields	Values	Fields	Values	Events	Results
Project Name	GULFPORT 269951-1	Job Type	LEAD	30.00 Bc	01h:45m
Test ID	269951-1	Cement Type	HOLCIM III	50.00 Bc	02h:09m
Request ID	6	Cement Weight	Light Weight	70.00 Bc	02h:10m
Tested by	RR	Test Date	09/07/12	100.00 Bc	02h:10m
Customer	GULFPORT	Test Time	11:48 PM	00h:30m	15.72
Well No	RIDGEVIEW 32-16-1	Temp. Units	degF	01h:00m	15.86
Rig	DHS 6	Pressure Units	PSI	01h:30m	23.26
Casing/Liner Size		SW Version	2.0.2.206	02h:00m	33.14



Data File Y:\HPHT Data Files\Vernal Consistometer #6\GULFPORT 269951-1.tdms

Comments