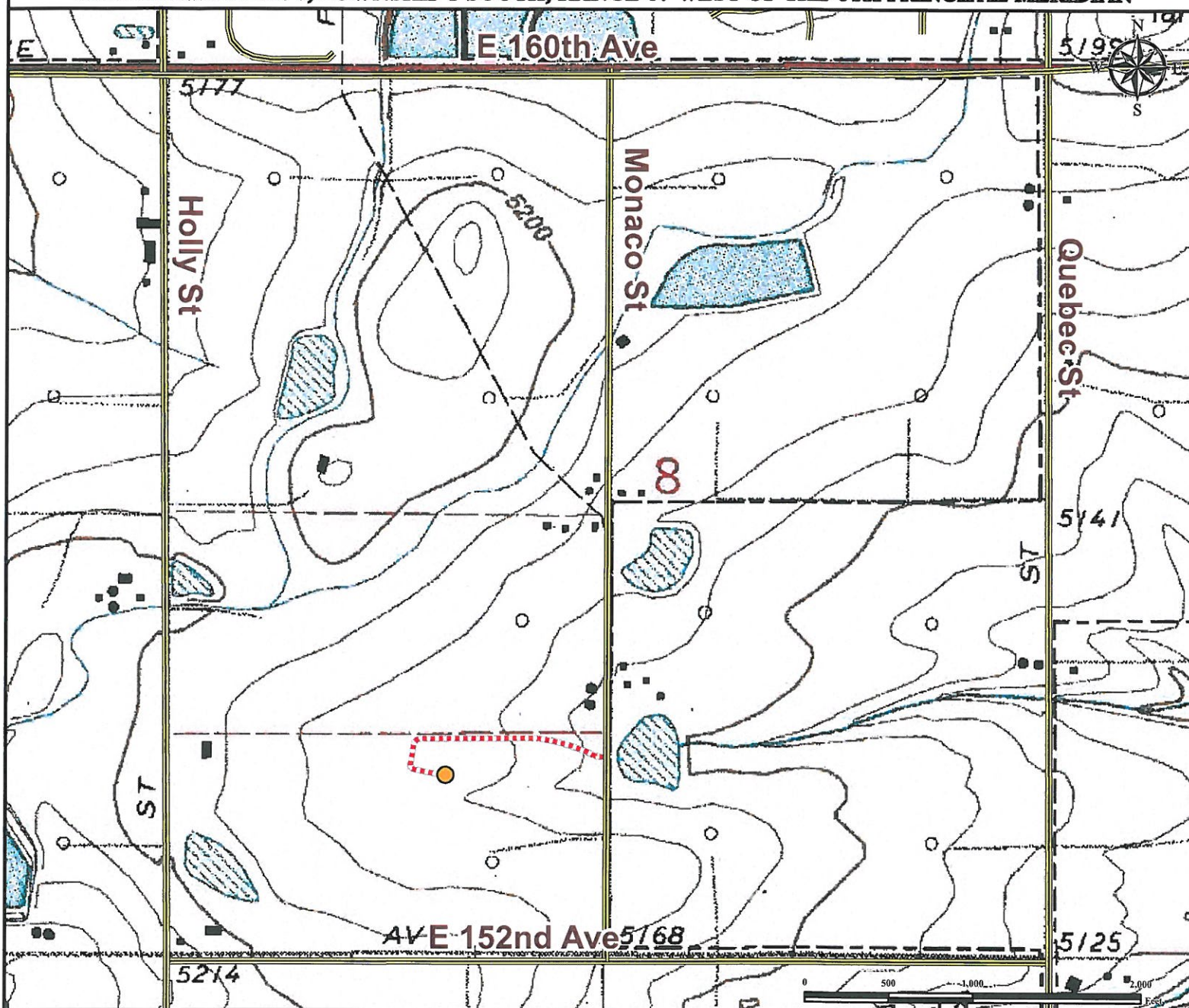


Access Road Map

BROWN 13-8

SE¼ SW¼ SECTION 8, TOWNSHIP 1 SOUTH, RANGE 67 WEST OF THE 6TH PRINCIPAL MERIDIAN



From Brighton, CO: From the intersection of N 4th Ave and E Bridge Street.

Drive West on E Bridge Street for ±0.43 miles to E 160th Ave..

Continue West on E 160th Ave and proceed ±4.59 miles to Monaco St.

Turn Left onto Monaco St. and proceed South ±0.77 miles to proposed access road.

Turn Right onto proposed access road and proceed West ±0.28 miles and follow access road to proposed well pad location.

Total distance from Brighton, CO to proposed well pad location is ±6.07 miles.

Legend



Proposed Well Pad



Public Road



Proposed Access Road

Reference Location

** All Measurements are Made from Reference Well BROWN 13-8 **

Lat: 39.974855° Long:-104.916119° (NAD83)
Elevation: 5173 Feet



Use our resources to find yours!
www.petro-fs.com
(303) 928-7128

Field Date: 12/13/2012
Drafting Date: 01/22/2013
Drafter: MAK
Revision:

Data Sources:

- TOPO courtesy of USGS

Prepared for:



BAYSWATER
EXPLORATION AND PRODUCTION, LLC