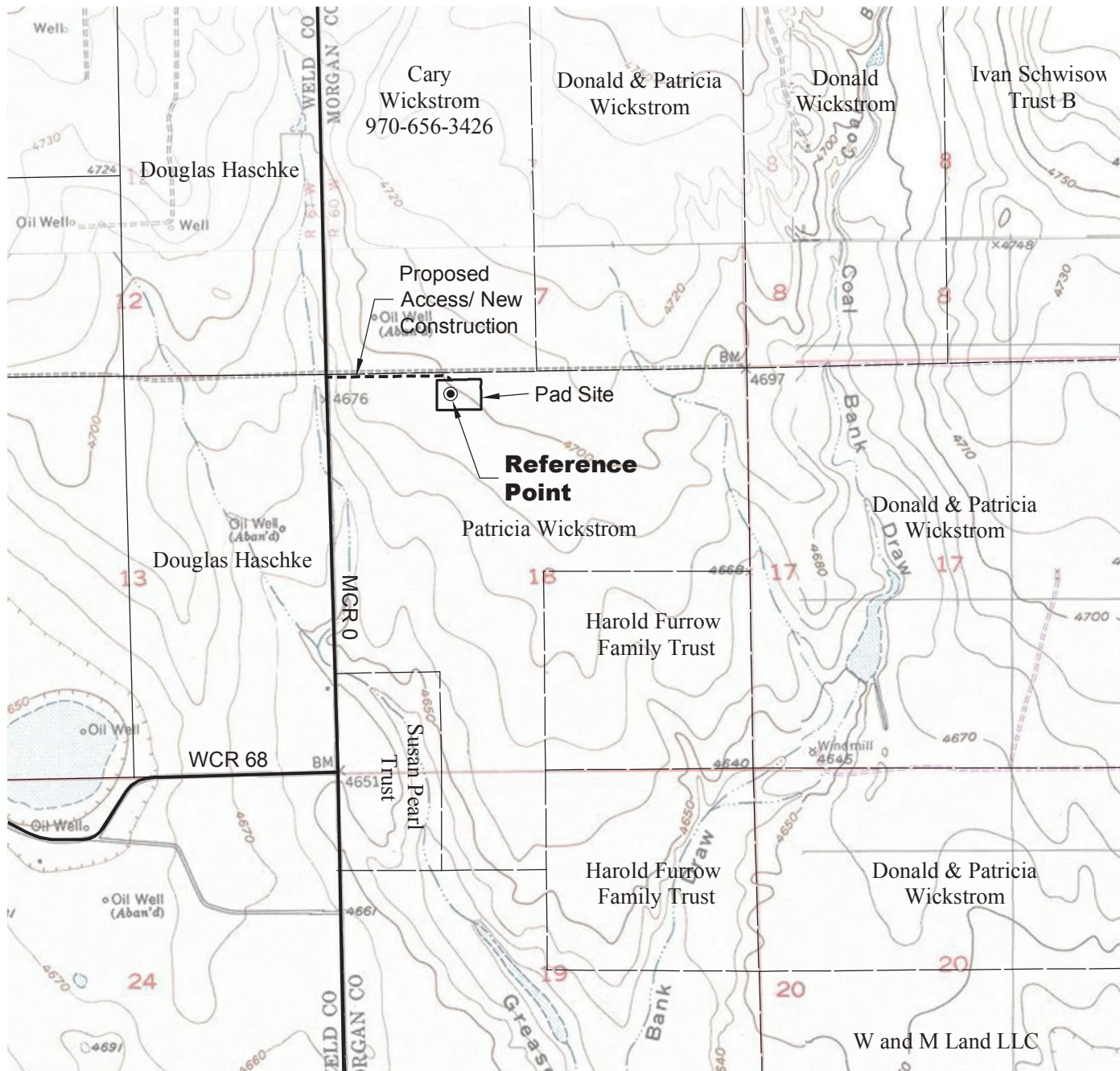


ACCESS ROAD MAP



DRIVING DIRECTIONS:

From Town of Orchard, beginning at intersection of Washington Ave & MCR X; East on MCR X
 MP 0.2 Left on MCR 2
 MP 13.3 Left on MCR Kk also known as WCR 74
 MP 15.3 Left on MCR 0 also know as WCR 97
 MP 17.3 Left on access to Wickstrom 18-1H pad
 MP 17.6 Wickstrom 18-1H pad

2/15/13



0 2000 4000

Graphic Scale in Feet
 1" = 2000'



LAND SURVEYING AND MAPPING
 LAFAYETTE - WINTER PARK
 Ph 303 666 0379 Fx 303 665 6320

CONDOR ENERGY TECHNOLOGY LLC
WICKSTROM 18-1H PAD

NE1/4 NW1/4 SECTION 18 T6N R60W
6th PM MORGAN COUNTY COLORADO