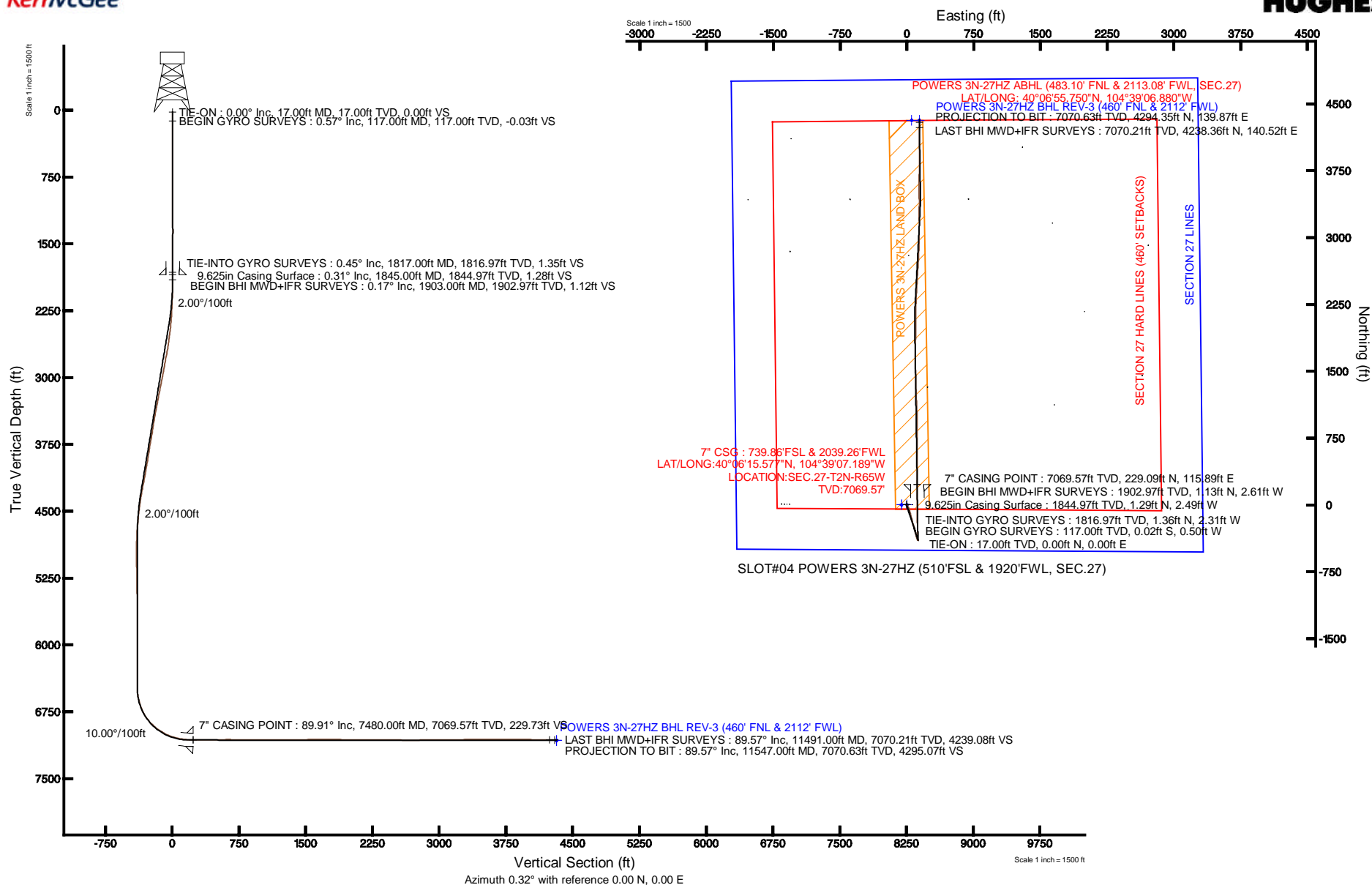


Location:	COLORADO	Slot:	SLOT#04 POWERS 3N-27HZ (510'FSL & 1920'FWL, SEC.27)
Field:	WELD COUNTY (KERR MCGEE)	Well:	POWERS 3N-27HZ
Facility:	SEC.27-T2N-R65W	Wellbore:	POWERS 3N-27HZ PWB

Plot reference wellpath is POWERS 3N-27HZ (REV-C.0)	
True vertical depths are referenced to XTREME 6 (RKB)	Grid System: NAD83 / Lambert Colorado SP, Northern Zone (501), US feet
Measured depths are referenced to XTREME 6 (RKB)	North Reference: True north
XTREME 6 (RKB) to Mean Sea Level: 4966 feet	Scale: True distance
Mean Sea Level to Mud line (At Slot: SLOT#04 POWERS 3N-27HZ (510'FSL & 1920'FWL, SEC.27)): 0 feet	Depths are in feet
Coordinates are in feet referenced to Slot	Created by: oreacin on 3/28/2013





Actual Wellpath Report

POWERS 3N-27HZ AWP

Page 1 of 7



REFERENCE WELLPATH IDENTIFICATION			
Operator	KERR-MCGEE OIL & GAS ONSHORE LP	Slot	SLOT#04 POWERS 3N-27HZ (510'FSL & 1920'FWL, SEC.27)
Area	COLORADO	Well	POWERS 3N-27HZ
Field	WELD COUNTY (KERR MCGEE)	Wellbore	POWERS 3N-27HZ AWB
Facility	SEC.27-T2N-R65W		

REPORT SETUP INFORMATION			
Projection System	NAD83 / Lambert Colorado SP, Northern Zone (501), US feet	Software System	WellArchitect® 3.0.2
North Reference	True	User	Precain
Scale	0.99996	Report Generated	3/28/2013 at 9:14:10 AM
Convergence at slot	0.55° East	Database/Source file	WellArchitectDB/POWERS_3N-27HZ_AWB.xml

WELLPATH LOCATION						
	Local coordinates		Grid coordinates		Geographic coordinates	
	North[ft]	East[ft]	Easting[US ft]	Northing[US ft]	Latitude	Longitude
Slot Location	-0.30	59.99	3237090.40	1281754.64	40°06'13.313"N	104°39'08.680"W
Facility Reference Pt			3237030.41	1281754.37	40°06'13.316"N	104°39'09.452"W
Field Reference Pt			3197771.84	1268891.29	40°04'09.600"N	104°47'36.000"W

WELLPATH DATUM			
Calculation method	Minimum curvature	XTREME 6 (RKB) to Facility Vertical Datum	4966.00ft
Horizontal Reference Pt	Slot	XTREME 6 (RKB) to Mean Sea Level	4966.00ft
Vertical Reference Pt	XTREME 6 (RKB)	XTREME 6 (RKB) to Mud Line at Slot (SLOT#04 POWERS 3N-27HZ (510'FSL & 1920'FWL, SEC.27))	4966.00ft
MD Reference Pt	XTREME 6 (RKB)	Section Origin	N 0.00, E 0.00 ft
Field Vertical Reference	Mean Sea Level	Section Azimuth	0.32°



Actual Wellpath Report

POWERS 3N-27HZ AWP

Page 2 of 7



REFERENCE WELLPATH IDENTIFICATION

Operator	KERR-MCGEE OIL & GAS ONSHORE LP	Slot	SLOT#04 POWERS 3N-27HZ (510'FSL & 1920'FWL, SEC.27)
Area	COLORADO	Well	POWERS 3N-27HZ
Field	WELD COUNTY (KERR MCGEE)	Wellbore	POWERS 3N-27HZ AWB
Facility	SEC.27-T2N-R65W		

WELLPATH DATA (149 stations) † = interpolated/extrapolated station

MD [ft]	Inclination [°]	Azimuth [°]	TVD [ft]	Vert Sect [ft]	North [ft]	East [ft]	Latitude	Longitude	DLS [°/100ft]	Comments
0.00†	0.000	267.300	0.00	0.00	0.00	0.00	40°06'13.313"N	104°39'08.680"W	0.00	
17.00	0.000	267.300	17.00	0.00	0.00	0.00	40°06'13.313"N	104°39'08.680"W	0.00	TIE-ON
117.00	0.570	267.300	117.00	-0.03	-0.02	-0.50	40°06'13.313"N	104°39'08.686"W	0.57	BEGIN GYRO SURVEYS
217.00	0.220	278.770	217.00	-0.02	-0.02	-1.18	40°06'13.313"N	104°39'08.695"W	0.36	
317.00	0.170	276.830	317.00	0.02	0.03	-1.52	40°06'13.313"N	104°39'08.700"W	0.05	
417.00	0.580	314.500	416.99	0.39	0.40	-2.03	40°06'13.317"N	104°39'08.706"W	0.46	
517.00	0.250	291.370	516.99	0.82	0.84	-2.59	40°06'13.321"N	104°39'08.713"W	0.36	
617.00	0.140	195.760	616.99	0.78	0.80	-2.83	40°06'13.321"N	104°39'08.716"W	0.30	
717.00	0.410	359.670	716.99	1.02	1.04	-2.86	40°06'13.323"N	104°39'08.717"W	0.55	
817.00	0.300	91.200	816.99	1.38	1.39	-2.60	40°06'13.327"N	104°39'08.714"W	0.51	
917.00	0.360	72.300	916.99	1.47	1.48	-2.04	40°06'13.328"N	104°39'08.706"W	0.12	
1017.00	0.370	66.290	1016.98	1.70	1.71	-1.45	40°06'13.330"N	104°39'08.699"W	0.04	
1117.00	0.370	56.730	1116.98	2.01	2.01	-0.88	40°06'13.333"N	104°39'08.691"W	0.06	
1217.00	0.440	63.460	1216.98	2.36	2.36	-0.27	40°06'13.336"N	104°39'08.683"W	0.08	
1317.00	0.220	299.610	1316.98	2.63	2.63	-0.09	40°06'13.339"N	104°39'08.681"W	0.59	
1417.00	0.220	224.030	1416.98	2.58	2.58	-0.39	40°06'13.339"N	104°39'08.685"W	0.27	
1517.00	0.230	233.710	1516.98	2.32	2.33	-0.69	40°06'13.336"N	104°39'08.689"W	0.04	
1617.00	0.290	219.890	1616.98	2.01	2.01	-1.01	40°06'13.333"N	104°39'08.693"W	0.09	
1717.00	0.480	246.030	1716.97	1.64	1.65	-1.56	40°06'13.329"N	104°39'08.700"W	0.25	
1817.00	0.450	252.220	1816.97	1.35	1.36	-2.31	40°06'13.326"N	104°39'08.710"W	0.06	TIE-INTO GYRO SURVEYS
1903.00	0.170	167.130	1902.97	1.12	1.13	-2.61	40°06'13.324"N	104°39'08.714"W	0.54	BEGIN BHI MWD+IFR SURVEYS
1988.00	1.040	185.370	1987.96	0.23	0.24	-2.65	40°06'13.315"N	104°39'08.714"W	1.04	
2072.00	1.920	144.550	2071.94	-1.67	-1.66	-1.91	40°06'13.297"N	104°39'08.705"W	1.57	
2157.00	2.710	140.780	2156.87	-4.38	-4.38	0.19	40°06'13.270"N	104°39'08.678"W	0.95	
2242.00	3.640	146.240	2241.74	-8.16	-8.18	2.96	40°06'13.232"N	104°39'08.642"W	1.15	
2327.00	4.670	149.110	2326.51	-13.36	-13.39	6.24	40°06'13.181"N	104°39'08.600"W	1.24	
2412.00	6.700	148.680	2411.09	-20.54	-20.60	10.59	40°06'13.109"N	104°39'08.544"W	2.39	
2498.00	7.560	152.290	2496.42	-29.80	-29.89	15.83	40°06'13.018"N	104°39'08.476"W	1.13	
2583.00	8.740	156.810	2580.56	-40.66	-40.78	20.97	40°06'12.910"N	104°39'08.410"W	1.58	
2668.00	10.050	164.540	2664.43	-53.72	-53.87	25.49	40°06'12.781"N	104°39'08.352"W	2.14	
2753.00	11.150	164.280	2747.97	-68.76	-68.93	29.70	40°06'12.632"N	104°39'08.298"W	1.30	
2837.00	10.690	165.840	2830.45	-84.11	-84.30	33.80	40°06'12.480"N	104°39'08.245"W	0.65	
2922.00	10.280	166.540	2914.03	-99.11	-99.32	37.50	40°06'12.332"N	104°39'08.197"W	0.51	
3007.00	11.880	165.430	2997.45	-114.93	-115.16	41.46	40°06'12.175"N	104°39'08.146"W	1.90	
3092.00	11.860	165.250	3080.63	-131.82	-132.08	45.89	40°06'12.008"N	104°39'08.089"W	0.05	
3177.00	11.410	165.510	3163.88	-148.38	-148.66	50.22	40°06'11.844"N	104°39'08.034"W	0.53	
3262.00	11.170	166.700	3247.24	-164.51	-164.82	54.21	40°06'11.684"N	104°39'07.982"W	0.39	
3348.00	10.770	168.470	3331.67	-180.47	-180.80	57.74	40°06'11.526"N	104°39'07.937"W	0.61	
3433.00	10.230	168.770	3415.24	-195.64	-195.98	60.79	40°06'11.376"N	104°39'07.898"W	0.64	
3518.00	10.400	159.870	3498.87	-210.22	-210.59	64.90	40°06'11.232"N	104°39'07.845"W	1.88	
3603.00	9.340	158.910	3582.62	-223.83	-224.23	70.03	40°06'11.097"N	104°39'07.779"W	1.26	
3688.00	10.000	160.660	3666.41	-237.21	-237.63	74.95	40°06'10.965"N	104°39'07.715"W	0.85	
3773.00	10.630	162.300	3750.03	-251.61	-252.06	79.78	40°06'10.822"N	104°39'07.653"W	0.82	
3858.00	9.310	161.590	3833.75	-265.58	-266.05	84.33	40°06'10.684"N	104°39'07.595"W	1.56	
3942.00	9.520	167.180	3916.62	-278.78	-279.27	88.02	40°06'10.553"N	104°39'07.547"W	1.12	



Actual Wellpath Report

POWERS 3N-27HZ AWP

Page 3 of 7



REFERENCE WELLPATH IDENTIFICATION

Operator	KERR-MCGEE OIL & GAS ONSHORE LP	Slot	SLOT#04 POWERS 3N-27HZ (510'FSL & 1920'FWL, SEC.27)
Area	COLORADO	Well	POWERS 3N-27HZ
Field	WELD COUNTY (KERR MCGEE)	Wellbore	POWERS 3N-27HZ AWB
Facility	SEC.27-T2N-R65W		

WELLPATH DATA (149 stations)

MD [ft]	Inclination [°]	Azimuth [°]	TVD [ft]	Vert Sect [ft]	North [ft]	East [ft]	Latitude	Longitude	DLS [°/100ft]	Comments
4027.00	10.530	166.710	4000.32	-293.17	-293.69	91.37	40°06'10.411"N	104°39'07.504"W	1.19	
4112.00	9.820	167.540	4083.98	-307.79	-308.32	94.72	40°06'10.266"N	104°39'07.461"W	0.85	
4198.00	11.390	166.360	4168.51	-323.18	-323.74	98.30	40°06'10.114"N	104°39'07.415"W	1.84	
4283.00	11.280	166.740	4251.85	-339.41	-339.99	102.19	40°06'09.953"N	104°39'07.365"W	0.16	
4367.00	9.610	164.880	4334.46	-354.16	-354.75	105.90	40°06'09.807"N	104°39'07.317"W	2.03	
4451.00	8.230	161.680	4417.44	-366.61	-367.23	109.62	40°06'09.684"N	104°39'07.269"W	1.75	
4536.00	7.540	162.220	4501.64	-377.68	-378.32	113.24	40°06'09.574"N	104°39'07.223"W	0.82	
4621.00	5.900	159.740	4586.05	-387.07	-387.73	116.45	40°06'09.481"N	104°39'07.181"W	1.96	
4706.00	4.540	154.970	4670.70	-394.20	-394.87	119.39	40°06'09.411"N	104°39'07.144"W	1.68	
4792.00	4.090	142.760	4756.45	-399.71	-400.40	122.68	40°06'09.356"N	104°39'07.101"W	1.19	
4877.00	1.810	148.250	4841.34	-403.25	-403.95	125.22	40°06'09.321"N	104°39'07.068"W	2.70	
4962.00	0.220	167.110	4926.32	-404.54	-405.25	125.97	40°06'09.308"N	104°39'07.059"W	1.89	
5047.00	0.590	326.650	5011.32	-404.34	-405.05	125.76	40°06'09.310"N	104°39'07.062"W	0.94	
5132.00	0.910	335.660	5096.31	-403.36	-404.07	125.24	40°06'09.320"N	104°39'07.068"W	0.40	
5217.00	0.970	347.700	5181.30	-402.04	-402.75	124.81	40°06'09.333"N	104°39'07.074"W	0.24	
5302.00	0.920	352.220	5266.29	-400.67	-401.37	124.57	40°06'09.347"N	104°39'07.077"W	0.11	
5387.00	1.230	343.180	5351.27	-399.12	-399.82	124.21	40°06'09.362"N	104°39'07.082"W	0.41	
5473.00	1.150	349.060	5437.25	-397.39	-398.09	123.78	40°06'09.379"N	104°39'07.087"W	0.17	
5558.00	0.520	300.300	5522.25	-396.36	-397.06	123.29	40°06'09.389"N	104°39'07.093"W	1.06	
5643.00	0.670	338.480	5607.24	-395.71	-396.40	122.77	40°06'09.396"N	104°39'07.100"W	0.49	
5728.00	1.070	341.830	5692.23	-394.49	-395.18	122.34	40°06'09.408"N	104°39'07.106"W	0.47	
5813.00	0.320	46.400	5777.23	-393.58	-394.27	122.26	40°06'09.417"N	104°39'07.107"W	1.15	
5899.00	0.180	241.940	5863.23	-393.47	-394.16	122.32	40°06'09.418"N	104°39'07.106"W	0.58	
5984.00	0.170	264.090	5948.22	-393.55	-394.24	122.08	40°06'09.417"N	104°39'07.109"W	0.08	
6069.00	0.420	282.090	6033.22	-393.50	-394.19	121.65	40°06'09.418"N	104°39'07.115"W	0.31	
6154.00	0.390	226.640	6118.22	-393.64	-394.32	121.13	40°06'09.416"N	104°39'07.121"W	0.44	
6239.00	0.580	234.130	6203.22	-394.09	-394.77	120.57	40°06'09.412"N	104°39'07.128"W	0.24	
6324.00	0.570	207.980	6288.21	-394.72	-395.40	120.03	40°06'09.406"N	104°39'07.135"W	0.31	
6409.00	0.480	234.450	6373.21	-395.30	-395.98	119.54	40°06'09.400"N	104°39'07.142"W	0.30	
6481.00	0.560	208.610	6445.21	-395.79	-396.46	119.12	40°06'09.395"N	104°39'07.147"W	0.34	
6525.00	0.400	253.810	6489.21	-396.02	-396.69	118.87	40°06'09.393"N	104°39'07.150"W	0.90	
6567.00	4.350	353.530	6531.17	-394.48	-395.15	118.55	40°06'09.408"N	104°39'07.154"W	10.56	
6610.00	8.630	3.670	6573.88	-389.64	-390.31	118.58	40°06'09.456"N	104°39'07.154"W	10.27	
6652.00	12.520	3.920	6615.16	-381.95	-382.62	119.09	40°06'09.532"N	104°39'07.147"W	9.26	
6695.00	17.330	2.700	6656.70	-370.89	-371.57	119.71	40°06'09.641"N	104°39'07.139"W	11.21	
6738.00	20.610	3.250	6697.36	-356.93	-357.61	120.44	40°06'09.779"N	104°39'07.130"W	7.64	
6780.00	25.100	1.630	6736.05	-340.63	-341.32	121.11	40°06'09.940"N	104°39'07.121"W	10.79	
6823.00	29.290	359.690	6774.29	-320.99	-321.67	121.32	40°06'10.134"N	104°39'07.119"W	9.96	
6865.00	33.430	357.480	6810.15	-299.15	-299.83	120.75	40°06'10.350"N	104°39'07.126"W	10.23	
6908.00	37.800	358.080	6845.10	-274.14	-274.81	119.79	40°06'10.597"N	104°39'07.138"W	10.20	
6951.00	42.400	357.420	6877.98	-246.48	-247.15	118.69	40°06'10.871"N	104°39'07.153"W	10.74	
6993.00	47.020	358.020	6907.82	-216.97	-217.63	117.52	40°06'11.162"N	104°39'07.168"W	11.05	
7036.00	51.520	359.110	6935.87	-184.41	-185.06	116.72	40°06'11.484"N	104°39'07.178"W	10.64	
7079.00	55.690	0.340	6961.38	-149.81	-150.46	116.56	40°06'11.826"N	104°39'07.180"W	9.97	
7121.00	59.810	359.470	6983.79	-114.29	-114.95	116.50	40°06'12.177"N	104°39'07.181"W	9.96	



Actual Wellpath Report

POWERS 3N-27HZ AWP

Page 4 of 7



REFERENCE WELLPATH IDENTIFICATION

Operator	KERR-MCGEE OIL & GAS ONSHORE LP	Slot	SLOT#04 POWERS 3N-27HZ (510'FSL & 1920'FWL, SEC.27)
Area	COLORADO	Well	POWERS 3N-27HZ
Field	WELD COUNTY (KERR MCGEE)	Wellbore	POWERS 3N-27HZ AWB
Facility	SEC.27-T2N-R65W		

WELLPATH DATA (149 stations) † = interpolated/extrapolated station

MD [ft]	Inclination [°]	Azimuth [°]	TVD [ft]	Vert Sect [ft]	North [ft]	East [ft]	Latitude	Longitude	DLS [°/100ft]	Comments
7164.00	63.910	359.840	7004.06	-76.39	-77.04	116.27	40°06'12.552"N	104°39'07.184"W	9.57	
7206.00	67.370	0.220	7021.38	-38.13	-38.78	116.29	40°06'12.930"N	104°39'07.183"W	8.28	
7249.00	71.400	0.220	7036.52	2.10	1.45	116.45	40°06'13.327"N	104°39'07.181"W	9.37	
7291.00	75.800	0.220	7048.37	42.39	41.73	116.60	40°06'13.725"N	104°39'07.179"W	10.48	
7333.00	80.290	359.710	7057.07	83.46	82.81	116.58	40°06'14.131"N	104°39'07.180"W	10.76	
7375.00	82.860	359.710	7063.23	125.00	124.36	116.37	40°06'14.542"N	104°39'07.182"W	6.12	
7417.00	85.650	359.710	7067.43	166.79	166.14	116.15	40°06'14.955"N	104°39'07.185"W	6.64	
7445.00	88.090	359.710	7068.96	194.74	194.10	116.01	40°06'15.231"N	104°39'07.187"W	8.71	
7480.00†	89.910	359.897	7069.57	229.73	229.09	115.89	40°06'15.577"N	104°39'07.189"W	5.23	7" CASING POINT
7490.00	90.430	359.950	7069.54	239.73	239.09	115.88	40°06'15.676"N	104°39'07.189"W	5.23	
7559.00	91.380	359.930	7068.45	308.72	308.08	115.81	40°06'16.357"N	104°39'07.190"W	1.38	
7645.00	90.060	359.640	7067.37	394.71	394.07	115.48	40°06'17.207"N	104°39'07.194"W	1.57	
7730.00	90.300	359.300	7067.10	479.70	479.07	114.70	40°06'18.047"N	104°39'07.204"W	0.49	
7815.00	90.640	0.700	7066.40	564.69	564.06	114.70	40°06'18.887"N	104°39'07.204"W	1.69	
7900.00	89.690	359.810	7066.16	649.69	649.06	115.08	40°06'19.727"N	104°39'07.199"W	1.53	
7986.00	88.890	0.430	7067.23	735.68	735.05	115.26	40°06'20.577"N	104°39'07.197"W	1.18	
8071.00	89.630	0.420	7068.32	820.67	820.04	115.89	40°06'21.417"N	104°39'07.189"W	0.87	
8155.00	90.760	359.880	7068.04	904.67	904.04	116.11	40°06'22.247"N	104°39'07.186"W	1.49	
8241.00	90.490	358.460	7067.10	990.65	990.02	114.86	40°06'23.097"N	104°39'07.202"W	1.68	
8326.00	89.880	356.870	7066.82	1075.55	1074.95	111.40	40°06'23.936"N	104°39'07.246"W	2.00	
8411.00	90.120	357.360	7066.82	1160.42	1159.84	107.12	40°06'24.775"N	104°39'07.301"W	0.64	
8496.00	89.660	357.590	7066.99	1245.31	1244.76	103.38	40°06'25.614"N	104°39'07.350"W	0.61	
8581.00	89.780	358.080	7067.40	1330.23	1329.69	100.16	40°06'26.453"N	104°39'07.391"W	0.59	
8667.00	90.250	358.910	7067.38	1416.19	1415.66	97.91	40°06'27.303"N	104°39'07.420"W	1.11	
8752.00	91.170	359.100	7066.33	1501.16	1500.64	96.43	40°06'28.143"N	104°39'07.439"W	1.11	
8837.00	90.710	359.370	7064.93	1586.13	1585.62	95.30	40°06'28.982"N	104°39'07.454"W	0.63	
8922.00	89.780	0.220	7064.57	1671.12	1670.62	94.99	40°06'29.822"N	104°39'07.457"W	1.48	
9007.00	90.310	0.300	7064.50	1756.12	1755.62	95.38	40°06'30.662"N	104°39'07.452"W	0.63	
9092.00	88.800	0.670	7065.16	1841.12	1840.61	96.10	40°06'31.502"N	104°39'07.443"W	1.83	
9178.00	88.650	0.430	7067.08	1927.10	1926.59	96.92	40°06'32.352"N	104°39'07.433"W	0.33	
9263.00	89.200	0.320	7068.67	2012.08	2011.57	97.48	40°06'33.192"N	104°39'07.425"W	0.66	
9348.00	89.660	0.610	7069.52	2097.08	2096.56	98.17	40°06'34.032"N	104°39'07.417"W	0.64	
9433.00	89.260	0.700	7070.32	2182.07	2181.55	99.14	40°06'34.871"N	104°39'07.404"W	0.48	
9516.00	90.060	2.520	7070.81	2265.04	2264.51	101.47	40°06'35.691"N	104°39'07.374"W	2.40	
9601.00	90.000	2.540	7070.77	2349.98	2349.43	105.22	40°06'36.530"N	104°39'07.326"W	0.07	
9686.00	89.820	3.190	7070.90	2434.90	2434.32	109.47	40°06'37.369"N	104°39'07.271"W	0.79	
9772.00	89.910	3.170	7071.10	2520.79	2520.19	114.24	40°06'38.218"N	104°39'07.210"W	0.11	
9857.00	89.140	3.640	7071.81	2605.66	2605.04	119.29	40°06'39.056"N	104°39'07.145"W	1.06	
9942.00	89.880	3.590	7072.53	2690.52	2689.86	124.65	40°06'39.895"N	104°39'07.076"W	0.87	
10027.00	91.500	3.430	7071.51	2775.38	2774.70	129.85	40°06'40.733"N	104°39'07.009"W	1.92	
10110.00	91.070	1.370	7069.65	2858.30	2857.60	133.33	40°06'41.552"N	104°39'06.964"W	2.53	
10196.00	90.610	1.550	7068.39	2944.27	2943.56	135.52	40°06'42.402"N	104°39'06.936"W	0.57	
10280.00	90.330	0.680	7067.70	3028.26	3027.54	137.15	40°06'43.232"N	104°39'06.915"W	1.09	
10365.00	90.090	0.730	7067.39	3113.26	3112.53	138.20	40°06'44.071"N	104°39'06.901"W	0.29	
10451.00	90.550	359.500	7066.91	3199.25	3198.53	138.37	40°06'44.921"N	104°39'06.899"W	1.53	



Actual Wellpath Report

POWERS 3N-27HZ AWP

Page 5 of 7



REFERENCE WELLPATH IDENTIFICATION

Operator	KERR-MCGEE OIL & GAS ONSHORE LP	Slot	SLOT#04 POWERS 3N-27HZ (510'FSL & 1920'FWL, SEC.27)
Area	COLORADO	Well	POWERS 3N-27HZ
Field	WELD COUNTY (KERR MCGEE)	Wellbore	POWERS 3N-27HZ AWB
Facility	SEC.27-T2N-R65W		

WELLPATH DATA (149 stations)

MD [ft]	Inclination [°]	Azimuth [°]	TVD [ft]	Vert Sect [ft]	North [ft]	East [ft]	Latitude	Longitude	DLS [°/100ft]	Comments
10536.00	90.550	0.090	7066.09	3284.25	3283.52	138.07	40°06'45.761"N	104°39'06.903"W	0.69	
10621.00	90.800	0.400	7065.09	3369.24	3368.52	138.43	40°06'46.601"N	104°39'06.898"W	0.47	
10706.00	90.580	359.360	7064.07	3454.23	3453.51	138.25	40°06'47.441"N	104°39'06.901"W	1.25	
10791.00	90.890	359.950	7062.98	3539.22	3538.50	137.74	40°06'48.281"N	104°39'06.907"W	0.78	
10876.00	88.760	0.020	7063.24	3624.21	3623.50	137.72	40°06'49.121"N	104°39'06.907"W	2.51	
10961.00	90.210	0.730	7064.00	3709.20	3708.49	138.28	40°06'49.961"N	104°39'06.900"W	1.90	
11044.00	90.300	1.280	7063.63	3792.20	3791.47	139.73	40°06'50.781"N	104°39'06.882"W	0.67	
11129.00	89.840	1.120	7063.53	3877.19	3876.45	141.51	40°06'51.621"N	104°39'06.859"W	0.57	
11212.00	88.860	359.820	7064.47	3960.18	3959.44	142.19	40°06'52.441"N	104°39'06.850"W	1.96	
11295.00	88.250	0.470	7066.56	4043.15	4042.42	142.40	40°06'53.261"N	104°39'06.847"W	1.07	
11380.00	88.650	359.300	7068.86	4128.11	4127.38	142.23	40°06'54.100"N	104°39'06.849"W	1.45	
11466.00	89.750	358.930	7070.06	4214.09	4213.36	140.90	40°06'54.950"N	104°39'06.866"W	1.35	
11491.00	89.570	359.330	7070.21	4239.08	4238.36	140.52	40°06'55.197"N	104°39'06.871"W	1.75	LAST BHI MWD+IFR SURVEYS
11547.00	89.570	359.330	7070.63	4295.07	4294.35	139.87	40°06'55.750"N	104°39'06.880"W	0.00	PROJECTION TO BIT

HOLE & CASING SECTIONS - Ref Wellbore: POWERS 3N-27HZ AWB Ref Wellpath: POWERS 3N-27HZ AWP

String/Diameter	Start MD [ft]	End MD [ft]	Interval [ft]	Start TVD [ft]	End TVD [ft]	Start N/S [ft]	Start E/W [ft]	End N/S [ft]	End E/W [ft]
13.5in Open Hole	17.00	1845.00	1828.00	17.00	1844.97	0.00	0.00	1.29	-2.49
9.625in Casing Surface	17.00	1845.00	1828.00	17.00	1844.97	0.00	0.00	1.29	-2.49
8.75in Open Hole	1845.00	7490.00	5645.00	1844.97	7069.54	1.29	-2.49	239.09	115.88
7in Casing Intermediate	17.00	7480.00	7463.00	17.00	7069.57	0.00	0.00	229.09	115.89
6.125in Open Hole	7480.00	11547.00	4067.00	7069.57	7070.63	229.09	115.89	4294.35	139.87



Actual Wellpath Report

POWERS 3N-27HZ AWP

Page 6 of 7



REFERENCE WELLPATH IDENTIFICATION

Operator	KERR-MCGEE OIL & GAS ONSHORE LP	Slot	SLOT#04 POWERS 3N-27HZ (510'FSL & 1920'FWL, SEC.27)
Area	COLORADO	Well	POWERS 3N-27HZ
Field	WELD COUNTY (KERR MCGEE)	Wellbore	POWERS 3N-27HZ AWB
Facility	SEC.27-T2N-R65W		

TARGETS

Name	MD [ft]	TVD [ft]	North [ft]	East [ft]	Grid East [US ft]	Grid North [US ft]	Latitude	Longitude	Shape
SECTION 27 LINES		0.00	0.30	-60.14	3237030.25	1281754.37	40°06'13.316"N	104°39'09.454"W	polygon
POWERS 3N-27HZ BHL REV-2 (460' FNL & 2027' FWL)		7076.00	4319.41	53.63	3237102.74	1286074.19	40°06'55.998"N	104°39'07.990"W	point
POWERS 3N-27HZ BHL REV-3 (460' FNL & 2112' FWL)		7076.00	4319.41	138.63	3237187.73	1286075.00	40°06'55.998"N	104°39'06.896"W	point
POWERS 3N-27HZ LAND BOX		7076.00	0.00	0.00	3237090.40	1281754.64	40°06'13.313"N	104°39'08.680"W	polygon
SECTION 27 HARD LINES (460' SETBACKS)		7273.00	0.30	-60.14	3237030.25	1281754.37	40°06'13.316"N	104°39'09.454"W	polygon

WELLPATH COMPOSITION - Ref Wellbore: POWERS 3N-27HZ AWB Ref Wellpath: POWERS 3N-27HZ AWP

Start MD [ft]	End MD [ft]	Positional Uncertainty Model	Log Name/Comment	Wellbore
17.00	1817.00	Generic gyro - continuous (Standard)	GYRODATA SURVEYS <117-1817>	POWERS 3N-27HZ AWB
1817.00	7490.00	NaviTrak (MAGCORR,IFR)	BHI MWD+IFR SURVEYS 8 3/4" HOLE <1903-7490>	POWERS 3N-27HZ AWB
7490.00	11491.00	OnTrak (MAGCORR,IFR)	BHI MWD+IFR SURVEYS 6 1/8" HOLE <7559-11491>	POWERS 3N-27HZ AWB
11491.00	11547.00	Blind Drilling (std)	Projection to bit	POWERS 3N-27HZ AWB



Actual Wellpath Report

POWERS 3N-27HZ AWP

Page 7 of 7



REFERENCE WELLPATH IDENTIFICATION

Operator	KERR-MCGEE OIL & GAS ONSHORE LP	Slot	SLOT#04 POWERS 3N-27HZ (510'FSL & 1920'FWL, SEC.27)
Area	COLORADO	Well	POWERS 3N-27HZ
Field	WELD COUNTY (KERR MCGEE)	Wellbore	POWERS 3N-27HZ AWP
Facility	SEC.27-T2N-R65W		

WELLPATH COMMENTS

MD [ft]	Inclination [°]	Azimuth [°]	TVD [ft]	Comment
17.00	0.000	267.300	17.00	TIE-ON
117.00	0.570	267.300	117.00	BEGIN GYRO SURVEYS
1817.00	0.450	252.220	1816.97	TIE-INTO GYRO SURVEYS
1903.00	0.170	167.130	1902.97	BEGIN BHI MWD+IFR SURVEYS
7480.00	89.910	359.897	7069.57	7" CASING POINT
11491.00	89.570	359.330	7070.21	LAST BHI MWD+IFR SURVEYS
11547.00	89.570	359.330	7070.63	PROJECTION TO BIT