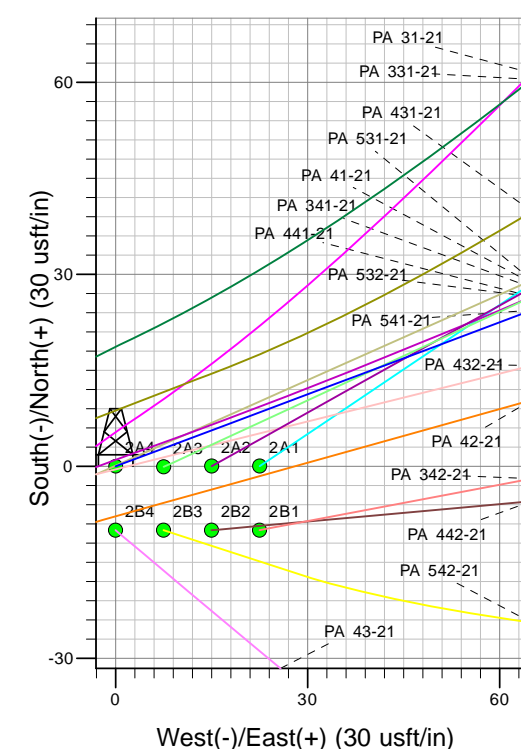
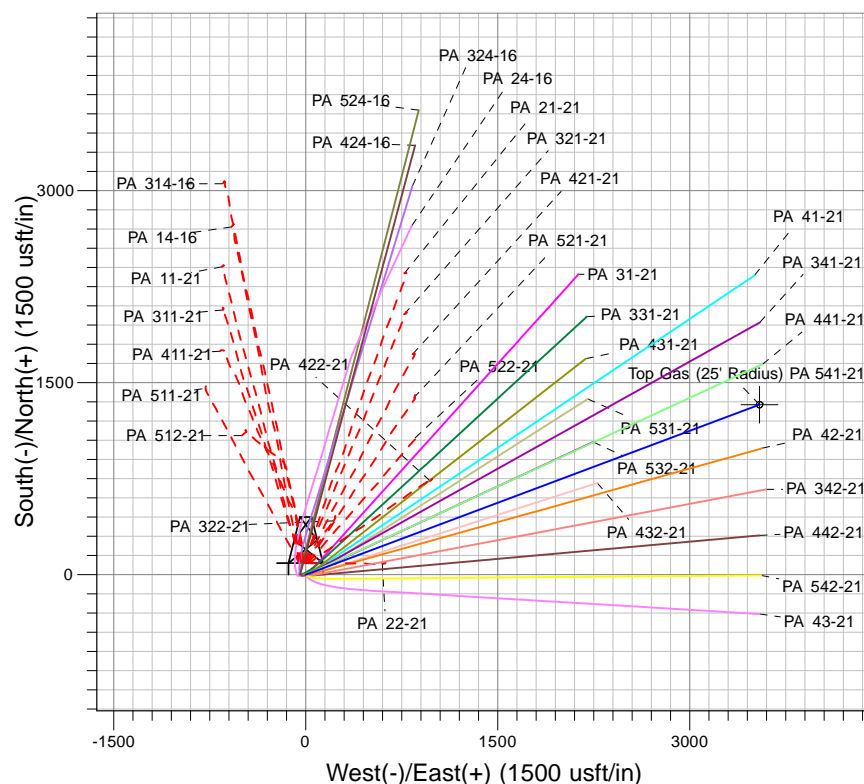
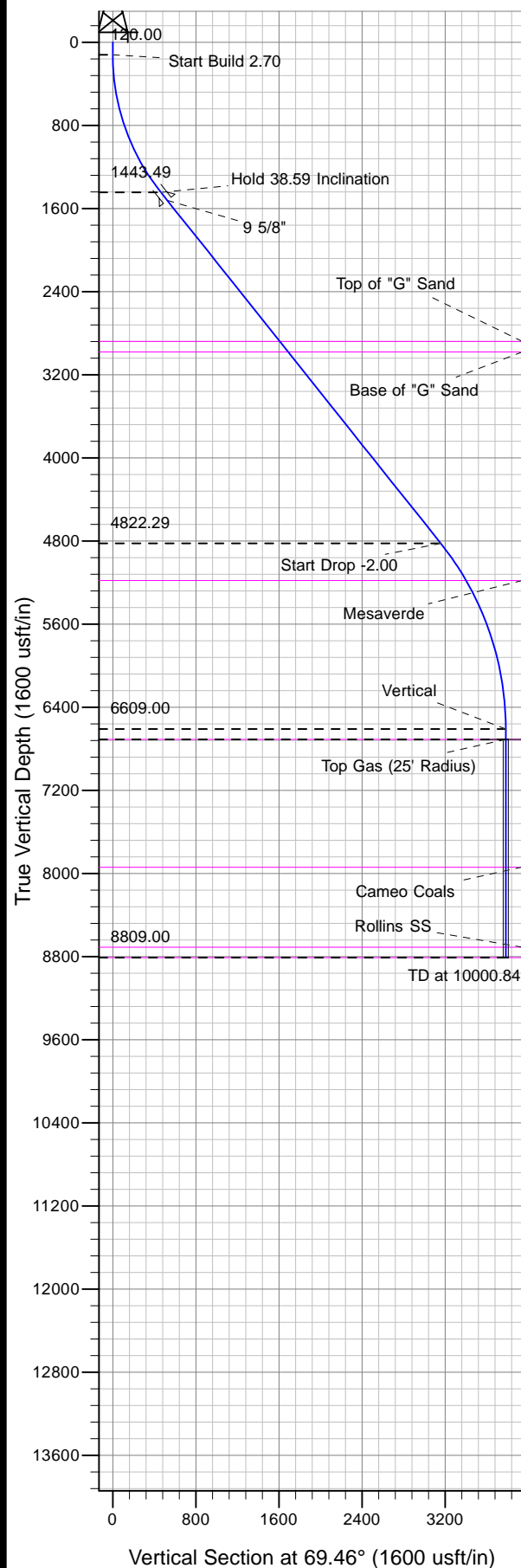




Well Name: PA 541-21
Surface Location: PA 22-21 Pad
North American Datum 1983 , US State Plane 1983, Colorado Central Zone
Ground Elevation: 6030.00
+N/-S +E/-W Northing Easting Latitude Longitude Slot
0.00 0.00 1620599.80 2292487.00 39.51051 -108.00796 2A4
KELLY BUSHING @ 6056.00usft (Nabors 26')



Project: PA 21-06S-095W
Site: PA 22-21 Pad
Well: PA 541-21
Design #2 07Nov12 kjs



Azimuths to True North
Magnetic North: 10.23°
Magnetic Field
Strength: 52157.4snT
Dip Angle: 65.72°
Date: 6/6/2012
Model: IGRF2010

ANNOTATIONS

MD	Inc	Azi	TVD	+N/-S	+E/-W	Vsect	Departure	Annotation
120.00	0.00	0.00	120.00	0.00	0.00	0.00	0.00	Start Build 2.70
1549.09	38.59	69.46	1443.49	162.58	433.83	463.29	463.29	Hold 38.59 Inclination
5871.57	38.59	69.46	4822.29	1108.63	2958.23	3159.14	3159.14	Start Drop -2.00
7800.84	0.00	0.00	6609.00	1328.11	3543.90	3784.59	3784.59	Vertical
7900.84	0.00	0.00	6709.00	1328.11	3543.90	3784.59	3784.59	Top Gas
10000.84	0.00	0.00	8809.00	1328.11	3543.90	3784.59	3784.59	TD at 10000.84