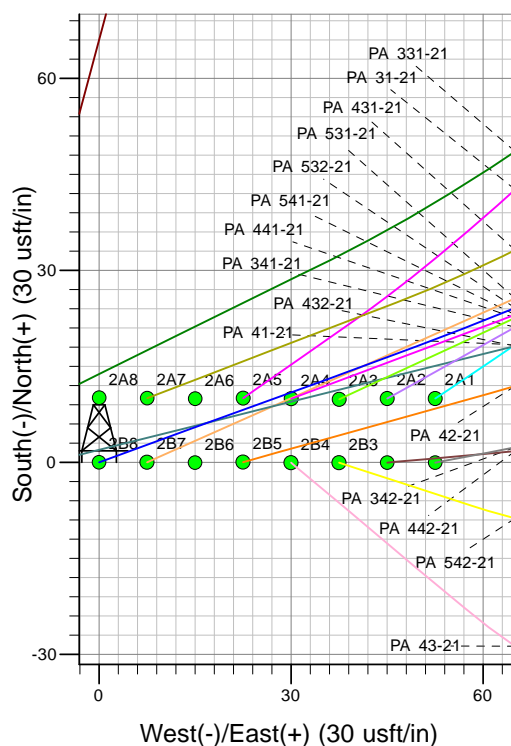
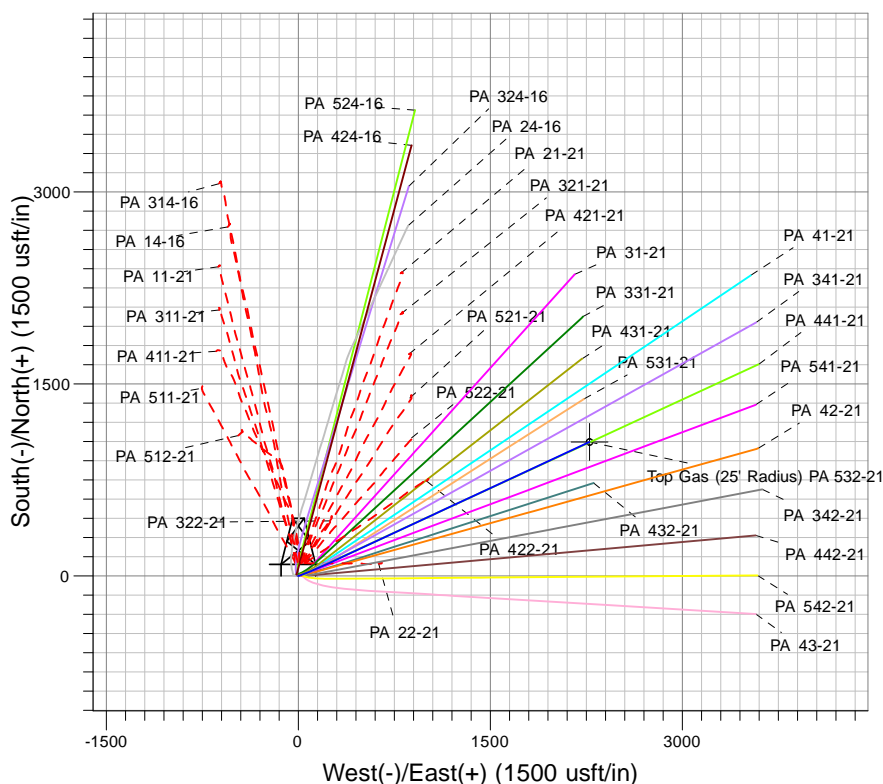
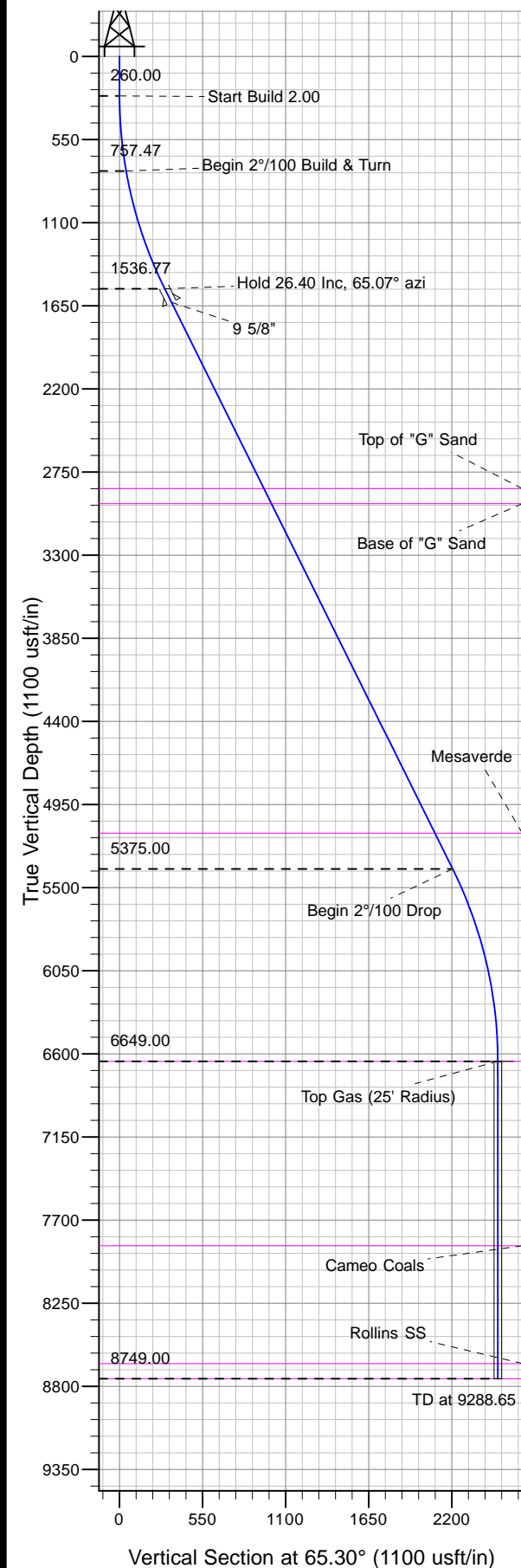




Well Name: PA 532-21  
Surface Location: PA 22-21 Pad  
North American Datum 1983 , US State Plane 1983, Colorado Central Zone  
Ground Elevation: 6030.00

| +N/-S | +E/-W | Northing   | Easting    | Latitude | Longitude  | Slot |
|-------|-------|------------|------------|----------|------------|------|
| 0.00  | 0.00  | 1620590.70 | 2292456.70 | 39.51049 | -108.00807 | 2B8  |

KELLY BUSHING @ 6056.00usft (Nabors 26')



Project: PA 21-06S-095W  
Site: PA 22-21 Pad  
Well: PA 532-21  
Design #2 07Nov12 kjs

Azimuths to True North  
Magnetic North: 10.23°  
Magnetic Field  
Strength: 52157.3snT  
Dip Angle: 65.72°  
Date: 6/6/2012  
Model: IGRF2010

#### ANNOTATIONS

| MD      | Inc   | Azi    | TVD     | +N/-S   | +E/-W   | Vsect   | Departure | Annotation                 |
|---------|-------|--------|---------|---------|---------|---------|-----------|----------------------------|
| 260.00  | 0.00  | 0.00   | 260.00  | 0.00    | 0.00    | 0.00    | 0.00      | Start Build 2.00           |
| 760.00  | 10.00 | 70.00  | 757.47  | 14.89   | 40.90   | 43.38   | 43.52     | Begin 2°/100 Build & Turn  |
| 1583.13 | 26.40 | 65.07  | 1536.77 | 117.19  | 275.64  | 299.39  | 299.65    | Hold 26.40 Inc, 65.07° azi |
| 5868.41 | 26.40 | 65.07  | 5375.00 | 920.52  | 2003.75 | 2205.07 | 2205.35   | Begin 2°/100 Drop          |
| 7188.65 | 0.00  | 254.47 | 6649.00 | 1046.50 | 2274.76 | 2503.94 | 2504.21   | Top Gas                    |
| 9288.65 | 0.00  | 254.47 | 8749.00 | 1046.50 | 2274.76 | 2503.93 | 2504.22   | TD at 9288.65              |