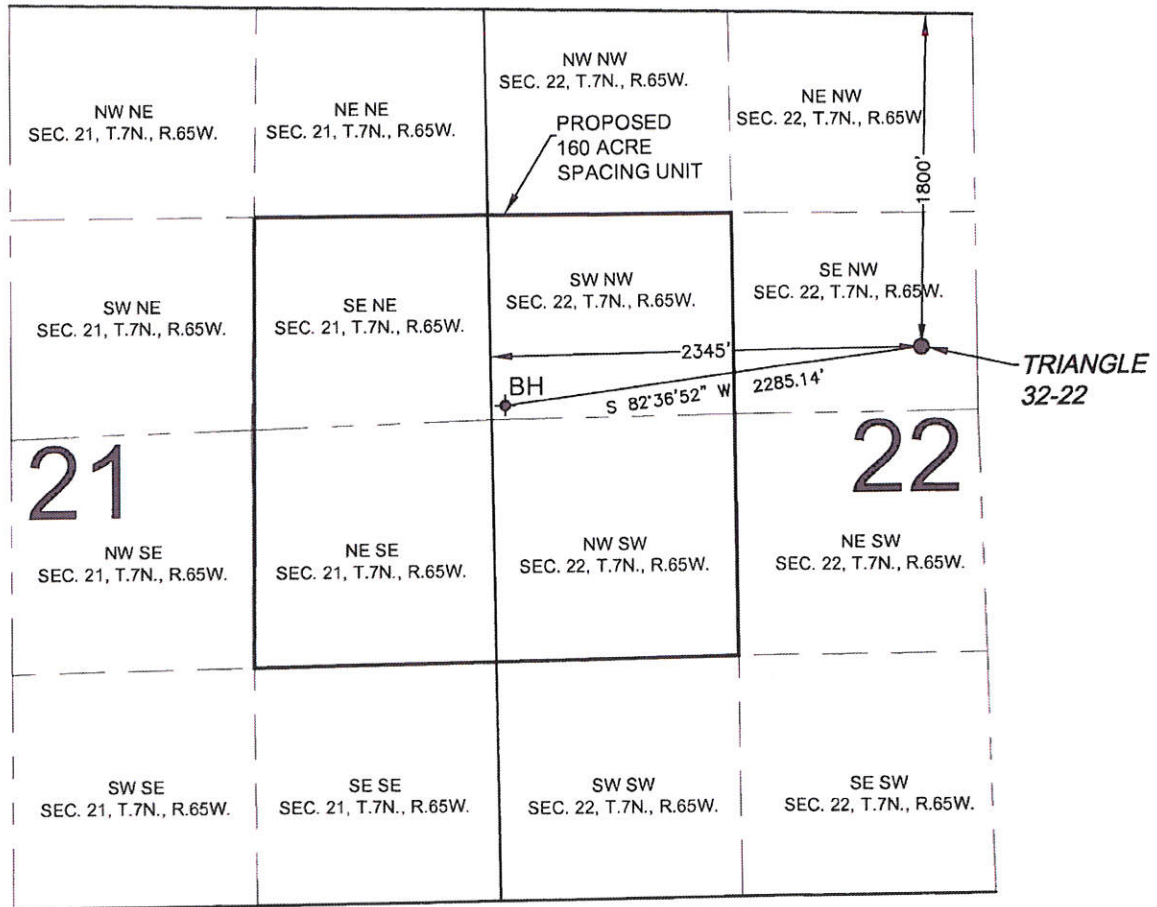


# PROPOSED 318 Ae SPACING UNIT

SECTION 22, TOWNSHIP 7 NORTH, RANGE 65 WEST, 6TH P.M.



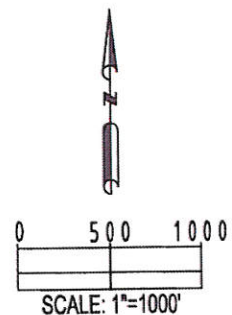
WELL TRIANGLE 32-22 TO BE LOCATED 1800' FNL AND 2345' FWL

SURFACE LOCATION  
 LATITUDE= 40.561813°  
 LONGITUDE= 104.650423°

BOTTOM HOLE LOCATION  
 LATITUDE= 40.561066°  
 LONGITUDE= 104.658589°

## LEGEND

- ◆ = BOTTOM HOLE
- = PROPOSED WELL
- BH = BOTTOM HOLE
- ◆ = EXISTING WELL



PREPARED BY:  Petroleum Field Services, LLC 1801 W. 13th Ave. Denver, CO 80204	FIELD DATE:	SURFACE LOCATION:
	09-19-12	SE 1/4 NW 1/4,
	DRAWING DATE:	SEC. 22, T7N, R65W, 6TH P.M.
	12-05-12	
BY:	CHECK:	WELD COUNTY, COLORADO
CLM	TJN	