

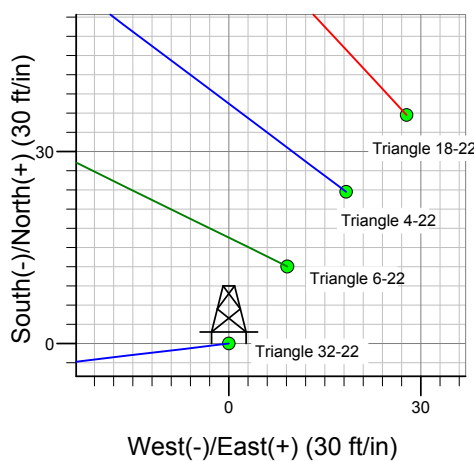
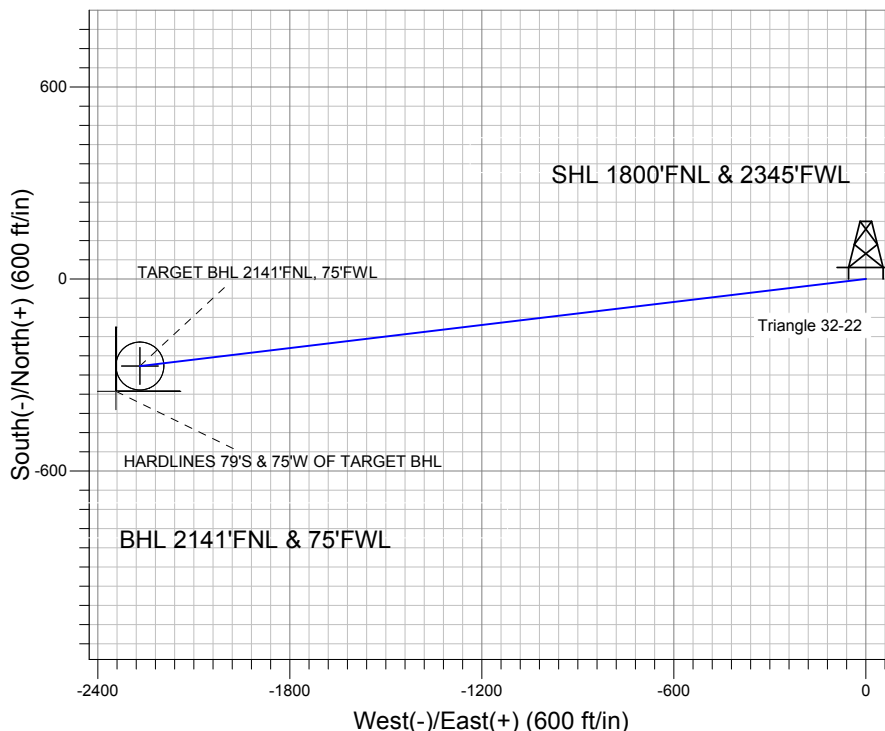
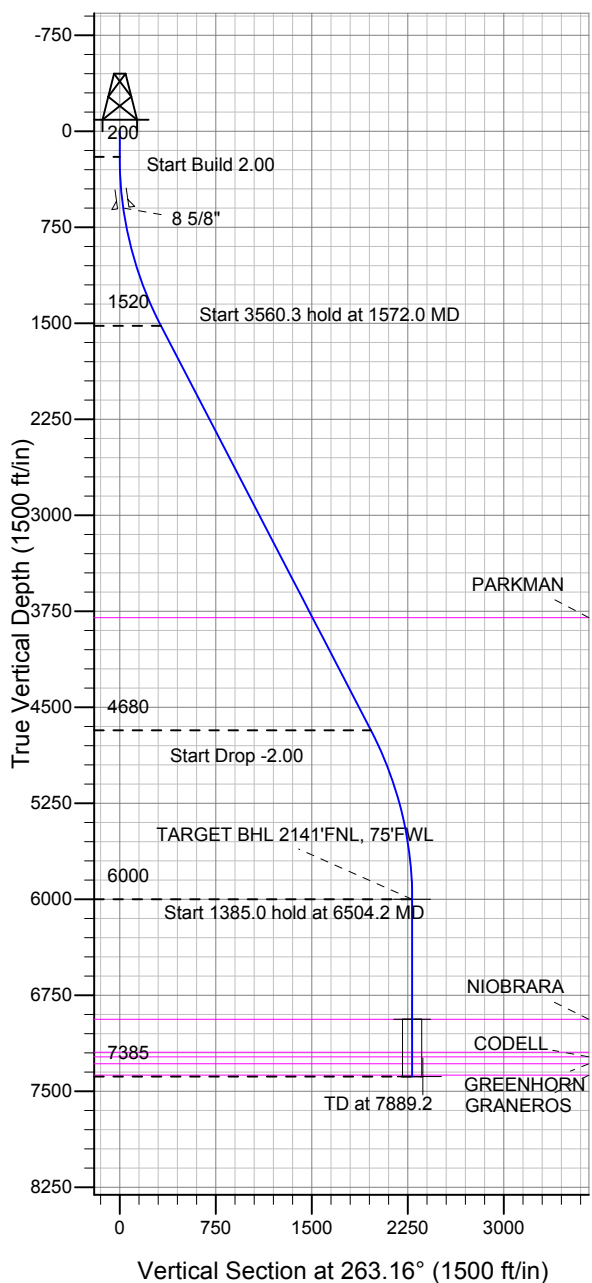
ENSIGN

Directional

Well Name: Triangle 32-22

Surface Location: Triangle 4 Pad Sec.22-T7N-R65W
 North American Datum 1983 US State Plane 1983 Colorado Northern Zone
 Ground Elevation: 4832.0
 +N/-S +E/-W Northing Easting Latitude Longitude Slot
 0.0 0.0 1448640.25 3236047.60 40.561813 -104.650423
 Original Well Elev WELL @ 4848.0ft (Original Well Elev)

BAYSWATER EXPLORATION & PRODUCTION



Azimuths to True North
 Magnetic North: 8.64°

Magnetic Field
 Strength: 53091.0snT
 Dip Angle: 67.16°
 Date: 10/2/2012
 Model: IGRF2010

WELLBORE TARGET DETAILS (LAT/LONG)

Name	TVD	+N/-S	+E/-W	Latitude	Longitude	Shape
TARGET BHL 2141'FNL, 75'FWL	6000.0	-272.0	-2269.0	40.561066	-104.658589	Point
TARGET CIRCLE 2141'FNL & 75'FWL	6938.0	-272.0	-2269.0	40.561066	-104.658589	Circle (Radius: 75.0)
HARDLINES 79'S & 75'W OF TARGET BHL	7385.0	-351.0	-2344.0	40.560849	-104.658859	Polygon

SECTION DETAILS

Sec	MD	Inc	Azi	TVD	+N/-S	+E/-W	DLeg	TFace	VSec	Target
1	0.0	0.00	0.00	0.0	0.0	0.0	0.00	0.00	0.0	
2	200.0	0.00	0.00	200.0	0.0	0.0	0.00	0.00	0.0	
3	1572.0	27.44	263.16	1520.1	-38.4	-320.0	2.00	263.16	322.3	
4	5132.2	27.44	263.16	4679.9	-233.7	-1949.0	0.00	0.00	1962.9	
5	6504.2	0.00	0.00	6000.0	-272.0	-2269.0	2.00	180.00	2285.2	TARGET BHL 2141'FNL, 75'FWL
6	7889.2	0.00	0.00	7385.0	-272.0	-2269.0	0.00	0.00	2285.2	



Directional

BAYSWATER EXPLORATION & PRODUCTION

SEC.22-T7N-R65W

Triangle 4 Pad Sec.22-T7N-R65W

Triangle 32-22

Wellbore #1

Plan: Plan #1 (10-02-12)

Standard Planning Report

02 October, 2012

Database:	Landmark	Local Co-ordinate Reference:	Well TRIANGLE 32-22
Company:	BAYSWATER EXPLORATION & PRODUCTION	TVD Reference:	WELL @ 4848.0ft (Original Well Elev)
Project:	SEC.22-T7N-R65W	MD Reference:	WELL @ 4848.0ft (Original Well Elev)
Site:	Triangle 4 Pad Sec.22-T7N-R65W	North Reference:	True
Well:	TRIANGLE 32-22	Survey Calculation Method:	Minimum Curvature
Wellbore:	Wellbore #1		
Design:	Plan #1 (10-02-12)		

Project	SEC.22-T7N-R65W, Weld County, Colorado		
Map System:	US State Plane 1983	System Datum:	Mean Sea Level
Geo Datum:	North American Datum 1983		Using Well Reference Point
Map Zone:	Colorado Northern Zone		Using geodetic scale factor

Site		Triangle 4 Pad Sec.22-T7N-R65W			
Site Position:		Northing:	1,448,664.11 ft	Latitude:	40.561878
From:	Lat/Long	Easting:	3,236,065.71 ft	Longitude:	-104.650357
Position Uncertainty:	0.0 ft	Slot Radius:	"	Grid Convergence:	0.55 °

Well	TRIANGLE 32-22					
Well Position	+N/-S	-23.7 ft	Northing:	1,448,640.25 ft	Latitude:	40.561813
	+E/-W	-18.3 ft	Easting:	3,236,047.60 ft	Longitude:	-104.650423
Position Uncertainty		0.0 ft	Wellhead Elevation:	ft	Ground Level:	4,832.0 ft

Wellbore	Wellbore #1				
Magnetics	Model Name	Sample Date	Declination (°)	Dip Angle (°)	Field Strength (nT)
	IGRF2010	10/2/2012	8.64	67.16	53,091

Design	Plan #1 (10-02-12)			
Audit Notes:				
Version:	Phase:	PROTOTYPE	Tie On Depth:	0.0
Vertical Section:	Depth From (TVD) (ft)	+N/-S (ft)	+E/-W (ft)	Direction (°)
	0.0	0.0	0.0	263.16

Plan Sections										
Measured Depth (ft)	Inclination (°)	Azimuth (°)	Vertical Depth (ft)	+N/-S (ft)	+E/-W (ft)	Dogleg Rate (°/100ft)	Build Rate (°/100ft)	Turn Rate (°/100ft)	TFO (°)	Target
0.0	0.00	0.00	0.0	0.0	0.0	0.00	0.00	0.00	0.00	
200.0	0.00	0.00	200.0	0.0	0.0	0.00	0.00	0.00	0.00	
1,572.0	27.44	263.16	1,520.1	-38.4	-320.0	2.00	2.00	0.00	263.16	
5,132.2	27.44	263.16	4,679.9	-233.7	-1,949.0	0.00	0.00	0.00	0.00	
6,504.2	0.00	0.00	6,000.0	-272.0	-2,269.0	2.00	-2.00	0.00	180.00	TARGET BHL 2141
7,889.2	0.00	0.00	7,385.0	-272.0	-2,269.0	0.00	0.00	0.00	0.00	

Database:	Landmark	Local Co-ordinate Reference:	Well TRIANGLE 32-22
Company:	BAYSWATER EXPLORATION & PRODUCTION	TVD Reference:	WELL @ 4848.0ft (Original Well Elev)
Project:	SEC.22-T7N-R65W	MD Reference:	WELL @ 4848.0ft (Original Well Elev)
Site:	Triangle 4 Pad Sec.22-T7N-R65W	North Reference:	True
Well:	TRIANGLE 32-22	Survey Calculation Method:	Minimum Curvature
Wellbore:	Wellbore #1		
Design:	Plan #1 (10-02-12)		

Planned Survey

Measured Depth (ft)	Inclination (°)	Azimuth (°)	Vertical Depth (ft)	+N/-S (ft)	+E/-W (ft)	Vertical Section (ft)	Dogleg Rate (°/100ft)	Build Rate (°/100ft)	Turn Rate (°/100ft)
0.0	0.00	0.00	0.0	0.0	0.0	0.0	0.00	0.00	0.00
40.0	0.00	0.00	40.0	0.0	0.0	0.0	0.00	0.00	0.00
80.0	0.00	0.00	80.0	0.0	0.0	0.0	0.00	0.00	0.00
120.0	0.00	0.00	120.0	0.0	0.0	0.0	0.00	0.00	0.00
160.0	0.00	0.00	160.0	0.0	0.0	0.0	0.00	0.00	0.00
200.0	0.00	0.00	200.0	0.0	0.0	0.0	0.00	0.00	0.00
240.0	0.80	263.16	240.0	0.0	-0.3	0.3	2.00	2.00	0.00
280.0	1.60	263.16	280.0	-0.1	-1.1	1.1	2.00	2.00	0.00
320.0	2.40	263.16	320.0	-0.3	-2.5	2.5	2.00	2.00	0.00
360.0	3.20	263.16	359.9	-0.5	-4.4	4.5	2.00	2.00	0.00
400.0	4.00	263.16	399.8	-0.8	-6.9	7.0	2.00	2.00	0.00
440.0	4.80	263.16	439.7	-1.2	-10.0	10.0	2.00	2.00	0.00
480.0	5.60	263.16	479.6	-1.6	-13.6	13.7	2.00	2.00	0.00
520.0	6.40	263.16	519.3	-2.1	-17.7	17.9	2.00	2.00	0.00
560.0	7.20	263.16	559.1	-2.7	-22.4	22.6	2.00	2.00	0.00
600.0	8.00	263.16	598.7	-3.3	-27.7	27.9	2.00	2.00	0.00
601.3	8.03	263.16	600.0	-3.3	-27.9	28.1	2.00	2.00	0.00
8 5/8"									
640.0	8.80	263.16	638.3	-4.0	-33.5	33.7	2.00	2.00	0.00
680.0	9.60	263.16	677.8	-4.8	-39.8	40.1	2.00	2.00	0.00
720.0	10.40	263.16	717.1	-5.6	-46.7	47.1	2.00	2.00	0.00
760.0	11.20	263.16	756.4	-6.5	-54.2	54.6	2.00	2.00	0.00
800.0	12.00	263.16	795.6	-7.5	-62.2	62.6	2.00	2.00	0.00
840.0	12.80	263.16	834.7	-8.5	-70.7	71.2	2.00	2.00	0.00
880.0	13.60	263.16	873.6	-9.6	-79.8	80.3	2.00	2.00	0.00
920.0	14.40	263.16	912.4	-10.7	-89.4	90.0	2.00	2.00	0.00
960.0	15.20	263.16	951.1	-11.9	-99.5	100.2	2.00	2.00	0.00
1,000.0	16.00	263.16	989.6	-13.2	-110.2	111.0	2.00	2.00	0.00
1,040.0	16.80	263.16	1,028.0	-14.6	-121.4	122.3	2.00	2.00	0.00
1,080.0	17.60	263.16	1,066.2	-16.0	-133.1	134.1	2.00	2.00	0.00
1,120.0	18.40	263.16	1,104.3	-17.4	-145.4	146.5	2.00	2.00	0.00
1,160.0	19.20	263.16	1,142.1	-19.0	-158.2	159.3	2.00	2.00	0.00
1,200.0	20.00	263.16	1,179.8	-20.6	-171.5	172.8	2.00	2.00	0.00
1,240.0	20.80	263.16	1,217.3	-22.2	-185.4	186.7	2.00	2.00	0.00
1,280.0	21.60	263.16	1,254.6	-23.9	-199.7	201.2	2.00	2.00	0.00
1,320.0	22.40	263.16	1,291.7	-25.7	-214.6	216.2	2.00	2.00	0.00
1,360.0	23.20	263.16	1,328.6	-27.6	-230.0	231.7	2.00	2.00	0.00
1,400.0	24.00	263.16	1,365.2	-29.5	-245.9	247.7	2.00	2.00	0.00
1,440.0	24.80	263.16	1,401.6	-31.5	-262.3	264.2	2.00	2.00	0.00
1,480.0	25.60	263.16	1,437.8	-33.5	-279.2	281.2	2.00	2.00	0.00
1,520.0	26.40	263.16	1,473.8	-35.6	-296.6	298.8	2.00	2.00	0.00
1,560.0	27.20	263.16	1,509.5	-37.7	-314.5	316.8	2.00	2.00	0.00
1,572.0	27.44	263.16	1,520.1	-38.4	-320.0	322.3	2.00	2.00	0.00
1,600.0	27.44	263.16	1,545.0	-39.9	-332.8	335.2	0.00	0.00	0.00
1,640.0	27.44	263.16	1,580.5	-42.1	-351.1	353.6	0.00	0.00	0.00
1,680.0	27.44	263.16	1,616.0	-44.3	-369.4	372.1	0.00	0.00	0.00
1,720.0	27.44	263.16	1,651.5	-46.5	-387.7	390.5	0.00	0.00	0.00
1,760.0	27.44	263.16	1,687.0	-48.7	-406.0	408.9	0.00	0.00	0.00
1,800.0	27.44	263.16	1,722.5	-50.9	-424.3	427.4	0.00	0.00	0.00
1,840.0	27.44	263.16	1,758.0	-53.1	-442.6	445.8	0.00	0.00	0.00
1,880.0	27.44	263.16	1,793.5	-55.3	-460.9	464.2	0.00	0.00	0.00
1,920.0	27.44	263.16	1,829.0	-57.5	-479.2	482.7	0.00	0.00	0.00
1,960.0	27.44	263.16	1,864.5	-59.7	-497.5	501.1	0.00	0.00	0.00

Database:	Landmark	Local Co-ordinate Reference:	Well TRIANGLE 32-22
Company:	BAYSWATER EXPLORATION & PRODUCTION	TVD Reference:	WELL @ 4848.0ft (Original Well Elev)
Project:	SEC.22-T7N-R65W	MD Reference:	WELL @ 4848.0ft (Original Well Elev)
Site:	Triangle 4 Pad Sec.22-T7N-R65W	North Reference:	True
Well:	TRIANGLE 32-22	Survey Calculation Method:	Minimum Curvature
Wellbore:	Wellbore #1		
Design:	Plan #1 (10-02-12)		

Planned Survey									
Measured Depth (ft)	Inclination (°)	Azimuth (°)	Vertical Depth (ft)	+N/-S (ft)	+E/-W (ft)	Vertical Section (ft)	Dogleg Rate (°/100ft)	Build Rate (°/100ft)	Turn Rate (°/100ft)
2,000.0	27.44	263.16	1,900.0	-61.8	-515.8	519.5	0.00	0.00	0.00
2,040.0	27.44	263.16	1,935.5	-64.0	-534.1	538.0	0.00	0.00	0.00
2,080.0	27.44	263.16	1,971.0	-66.2	-552.4	556.4	0.00	0.00	0.00
2,120.0	27.44	263.16	2,006.5	-68.4	-570.7	574.8	0.00	0.00	0.00
2,160.0	27.44	263.16	2,042.0	-70.6	-589.0	593.3	0.00	0.00	0.00
2,200.0	27.44	263.16	2,077.5	-72.8	-607.3	611.7	0.00	0.00	0.00
2,240.0	27.44	263.16	2,113.0	-75.0	-625.7	630.1	0.00	0.00	0.00
2,280.0	27.44	263.16	2,148.5	-77.2	-644.0	648.6	0.00	0.00	0.00
2,320.0	27.44	263.16	2,184.0	-79.4	-662.3	667.0	0.00	0.00	0.00
2,360.0	27.44	263.16	2,219.5	-81.6	-680.6	685.4	0.00	0.00	0.00
2,400.0	27.44	263.16	2,255.0	-83.8	-698.9	703.9	0.00	0.00	0.00
2,440.0	27.44	263.16	2,290.5	-86.0	-717.2	722.3	0.00	0.00	0.00
2,480.0	27.44	263.16	2,326.0	-88.2	-735.5	740.7	0.00	0.00	0.00
2,520.0	27.44	263.16	2,361.5	-90.4	-753.8	759.2	0.00	0.00	0.00
2,560.0	27.44	263.16	2,397.0	-92.6	-772.1	777.6	0.00	0.00	0.00
2,600.0	27.44	263.16	2,432.5	-94.8	-790.4	796.0	0.00	0.00	0.00
2,640.0	27.44	263.16	2,468.0	-97.0	-808.7	814.5	0.00	0.00	0.00
2,680.0	27.44	263.16	2,503.5	-99.1	-827.0	832.9	0.00	0.00	0.00
2,720.0	27.44	263.16	2,539.0	-101.3	-845.3	851.3	0.00	0.00	0.00
2,760.0	27.44	263.16	2,574.5	-103.5	-863.6	869.8	0.00	0.00	0.00
2,800.0	27.44	263.16	2,610.0	-105.7	-881.9	888.2	0.00	0.00	0.00
2,840.0	27.44	263.16	2,645.5	-107.9	-900.2	906.6	0.00	0.00	0.00
2,880.0	27.44	263.16	2,681.0	-110.1	-918.5	925.1	0.00	0.00	0.00
2,920.0	27.44	263.16	2,716.5	-112.3	-936.8	943.5	0.00	0.00	0.00
2,960.0	27.44	263.16	2,752.0	-114.5	-955.1	961.9	0.00	0.00	0.00
3,000.0	27.44	263.16	2,787.5	-116.7	-973.4	980.4	0.00	0.00	0.00
3,040.0	27.44	263.16	2,823.0	-118.9	-991.7	998.8	0.00	0.00	0.00
3,080.0	27.44	263.16	2,858.5	-121.1	-1,010.0	1,017.2	0.00	0.00	0.00
3,120.0	27.44	263.16	2,894.0	-123.3	-1,028.3	1,035.6	0.00	0.00	0.00
3,160.0	27.44	263.16	2,929.5	-125.5	-1,046.6	1,054.1	0.00	0.00	0.00
3,200.0	27.44	263.16	2,965.0	-127.7	-1,064.9	1,072.5	0.00	0.00	0.00
3,240.0	27.44	263.16	3,000.5	-129.9	-1,083.2	1,090.9	0.00	0.00	0.00
3,280.0	27.44	263.16	3,036.0	-132.1	-1,101.5	1,109.4	0.00	0.00	0.00
3,320.0	27.44	263.16	3,071.5	-134.3	-1,119.8	1,127.8	0.00	0.00	0.00
3,360.0	27.44	263.16	3,107.0	-136.5	-1,138.1	1,146.2	0.00	0.00	0.00
3,400.0	27.44	263.16	3,142.5	-138.6	-1,156.4	1,164.7	0.00	0.00	0.00
3,440.0	27.44	263.16	3,178.0	-140.8	-1,174.7	1,183.1	0.00	0.00	0.00
3,480.0	27.44	263.16	3,213.5	-143.0	-1,193.0	1,201.5	0.00	0.00	0.00
3,520.0	27.44	263.16	3,249.0	-145.2	-1,211.3	1,220.0	0.00	0.00	0.00
3,560.0	27.44	263.16	3,284.5	-147.4	-1,229.6	1,238.4	0.00	0.00	0.00
3,600.0	27.44	263.16	3,320.0	-149.6	-1,247.9	1,256.8	0.00	0.00	0.00
3,640.0	27.44	263.16	3,355.5	-151.8	-1,266.2	1,275.3	0.00	0.00	0.00
3,680.0	27.44	263.16	3,391.0	-154.0	-1,284.5	1,293.7	0.00	0.00	0.00
3,720.0	27.44	263.16	3,426.5	-156.2	-1,302.8	1,312.1	0.00	0.00	0.00
3,760.0	27.44	263.16	3,462.0	-158.4	-1,321.1	1,330.6	0.00	0.00	0.00
3,800.0	27.44	263.16	3,497.5	-160.6	-1,339.4	1,349.0	0.00	0.00	0.00
3,840.0	27.44	263.16	3,533.0	-162.8	-1,357.7	1,367.4	0.00	0.00	0.00
3,880.0	27.44	263.16	3,568.5	-165.0	-1,376.0	1,385.9	0.00	0.00	0.00
3,920.0	27.44	263.16	3,604.0	-167.2	-1,394.3	1,404.3	0.00	0.00	0.00
3,960.0	27.44	263.16	3,639.5	-169.4	-1,412.6	1,422.7	0.00	0.00	0.00
4,000.0	27.44	263.16	3,675.0	-171.6	-1,430.9	1,441.2	0.00	0.00	0.00
4,040.0	27.44	263.16	3,710.5	-173.8	-1,449.2	1,459.6	0.00	0.00	0.00
4,080.0	27.44	263.16	3,746.0	-175.9	-1,467.5	1,478.0	0.00	0.00	0.00

Database:	Landmark	Local Co-ordinate Reference:	Well TRIANGLE 32-22
Company:	BAYSWATER EXPLORATION & PRODUCTION	TVD Reference:	WELL @ 4848.0ft (Original Well Elev)
Project:	SEC.22-T7N-R65W	MD Reference:	WELL @ 4848.0ft (Original Well Elev)
Site:	Triangle 4 Pad Sec.22-T7N-R65W	North Reference:	True
Well:	TRIANGLE 32-22	Survey Calculation Method:	Minimum Curvature
Wellbore:	Wellbore #1		
Design:	Plan #1 (10-02-12)		

Planned Survey									
Measured Depth (ft)	Inclination (°)	Azimuth (°)	Vertical Depth (ft)	+N/-S (ft)	+E/-W (ft)	Vertical Section (ft)	Dogleg Rate (°/100ft)	Build Rate (°/100ft)	Turn Rate (°/100ft)
4,120.0	27.44	263.16	3,781.5	-178.1	-1,485.8	1,496.5	0.00	0.00	0.00
4,140.9	27.44	263.16	3,800.0	-179.3	-1,495.4	1,506.1	0.00	0.00	0.00
PARKMAN									
4,160.0	27.44	263.16	3,817.0	-180.3	-1,504.1	1,514.9	0.00	0.00	0.00
4,200.0	27.44	263.16	3,852.5	-182.5	-1,522.4	1,533.3	0.00	0.00	0.00
4,240.0	27.44	263.16	3,888.0	-184.7	-1,540.7	1,551.8	0.00	0.00	0.00
4,280.0	27.44	263.16	3,923.5	-186.9	-1,559.0	1,570.2	0.00	0.00	0.00
4,320.0	27.44	263.16	3,959.0	-189.1	-1,577.3	1,588.6	0.00	0.00	0.00
4,360.0	27.44	263.16	3,994.5	-191.3	-1,595.6	1,607.1	0.00	0.00	0.00
4,400.0	27.44	263.16	4,030.0	-193.5	-1,613.9	1,625.5	0.00	0.00	0.00
4,440.0	27.44	263.16	4,065.5	-195.7	-1,632.2	1,643.9	0.00	0.00	0.00
4,480.0	27.44	263.16	4,101.0	-197.9	-1,650.5	1,662.4	0.00	0.00	0.00
4,520.0	27.44	263.16	4,136.5	-200.1	-1,668.8	1,680.8	0.00	0.00	0.00
4,560.0	27.44	263.16	4,172.0	-202.3	-1,687.1	1,699.2	0.00	0.00	0.00
4,600.0	27.44	263.16	4,207.5	-204.5	-1,705.4	1,717.7	0.00	0.00	0.00
4,640.0	27.44	263.16	4,243.0	-206.7	-1,723.7	1,736.1	0.00	0.00	0.00
4,680.0	27.44	263.16	4,278.5	-208.9	-1,742.0	1,754.5	0.00	0.00	0.00
4,720.0	27.44	263.16	4,314.0	-211.1	-1,760.3	1,773.0	0.00	0.00	0.00
4,760.0	27.44	263.16	4,349.5	-213.2	-1,778.7	1,791.4	0.00	0.00	0.00
4,800.0	27.44	263.16	4,385.0	-215.4	-1,797.0	1,809.8	0.00	0.00	0.00
4,840.0	27.44	263.16	4,420.5	-217.6	-1,815.3	1,828.3	0.00	0.00	0.00
4,880.0	27.44	263.16	4,456.0	-219.8	-1,833.6	1,846.7	0.00	0.00	0.00
4,920.0	27.44	263.16	4,491.5	-222.0	-1,851.9	1,865.1	0.00	0.00	0.00
4,960.0	27.44	263.16	4,527.0	-224.2	-1,870.2	1,883.6	0.00	0.00	0.00
5,000.0	27.44	263.16	4,562.5	-226.4	-1,888.5	1,902.0	0.00	0.00	0.00
5,040.0	27.44	263.16	4,598.0	-228.6	-1,906.8	1,920.4	0.00	0.00	0.00
5,080.0	27.44	263.16	4,633.5	-230.8	-1,925.1	1,938.9	0.00	0.00	0.00
5,120.0	27.44	263.16	4,669.0	-233.0	-1,943.4	1,957.3	0.00	0.00	0.00
5,132.2	27.44	263.16	4,679.9	-233.7	-1,949.0	1,962.9	0.00	0.00	0.00
5,160.0	26.88	263.16	4,704.5	-235.2	-1,961.5	1,975.6	2.00	-2.00	0.00
5,200.0	26.08	263.16	4,740.3	-237.3	-1,979.3	1,993.4	2.00	-2.00	0.00
5,240.0	25.28	263.16	4,776.4	-239.4	-1,996.5	2,010.8	2.00	-2.00	0.00
5,280.0	24.48	263.16	4,812.7	-241.4	-2,013.2	2,027.6	2.00	-2.00	0.00
5,320.0	23.68	263.16	4,849.2	-243.3	-2,029.4	2,043.9	2.00	-2.00	0.00
5,360.0	22.88	263.16	4,885.9	-245.2	-2,045.1	2,059.7	2.00	-2.00	0.00
5,400.0	22.08	263.16	4,922.9	-247.0	-2,060.3	2,075.0	2.00	-2.00	0.00
5,440.0	21.28	263.16	4,960.1	-248.8	-2,075.0	2,089.8	2.00	-2.00	0.00
5,480.0	20.48	263.16	4,997.4	-250.5	-2,089.1	2,104.1	2.00	-2.00	0.00
5,520.0	19.68	263.16	5,035.0	-252.1	-2,102.8	2,117.8	2.00	-2.00	0.00
5,560.0	18.88	263.16	5,072.8	-253.7	-2,115.9	2,131.0	2.00	-2.00	0.00
5,600.0	18.08	263.16	5,110.7	-255.2	-2,128.5	2,143.7	2.00	-2.00	0.00
5,640.0	17.28	263.16	5,148.8	-256.6	-2,140.5	2,155.9	2.00	-2.00	0.00
5,680.0	16.48	263.16	5,187.1	-258.0	-2,152.1	2,167.5	2.00	-2.00	0.00
5,720.0	15.68	263.16	5,225.5	-259.3	-2,163.1	2,178.6	2.00	-2.00	0.00
5,760.0	14.88	263.16	5,264.1	-260.6	-2,173.5	2,189.1	2.00	-2.00	0.00
5,800.0	14.08	263.16	5,302.8	-261.8	-2,183.5	2,199.1	2.00	-2.00	0.00
5,840.0	13.28	263.16	5,341.7	-262.9	-2,192.9	2,208.6	2.00	-2.00	0.00
5,880.0	12.48	263.16	5,380.7	-264.0	-2,201.7	2,217.5	2.00	-2.00	0.00
5,920.0	11.68	263.16	5,419.8	-265.0	-2,210.0	2,225.9	2.00	-2.00	0.00
5,960.0	10.88	263.16	5,459.0	-265.9	-2,217.8	2,233.7	2.00	-2.00	0.00
6,000.0	10.08	263.16	5,498.4	-266.8	-2,225.0	2,241.0	2.00	-2.00	0.00
6,040.0	9.28	263.16	5,537.8	-267.6	-2,231.7	2,247.7	2.00	-2.00	0.00
6,080.0	8.48	263.16	5,577.3	-268.3	-2,237.8	2,253.9	2.00	-2.00	0.00

Database:	Landmark	Local Co-ordinate Reference:	Well TRIANGLE 32-22
Company:	BAYSWATER EXPLORATION & PRODUCTION	TVD Reference:	WELL @ 4848.0ft (Original Well Elev)
Project:	SEC.22-T7N-R65W	MD Reference:	WELL @ 4848.0ft (Original Well Elev)
Site:	Triangle 4 Pad Sec.22-T7N-R65W	North Reference:	True
Well:	TRIANGLE 32-22	Survey Calculation Method:	Minimum Curvature
Wellbore:	Wellbore #1		
Design:	Plan #1 (10-02-12)		

Planned Survey									
Measured Depth (ft)	Inclination (°)	Azimuth (°)	Vertical Depth (ft)	+N/-S (ft)	+E/-W (ft)	Vertical Section (ft)	Dogleg Rate (°/100ft)	Build Rate (°/100ft)	Turn Rate (°/100ft)
6,120.0	7.68	263.16	5,616.9	-269.0	-2,243.4	2,259.5	2.00	-2.00	0.00
6,160.0	6.88	263.16	5,656.6	-269.6	-2,248.5	2,264.6	2.00	-2.00	0.00
6,200.0	6.08	263.16	5,696.3	-270.1	-2,253.0	2,269.1	2.00	-2.00	0.00
6,240.0	5.28	263.16	5,736.1	-270.6	-2,256.9	2,273.1	2.00	-2.00	0.00
6,280.0	4.48	263.16	5,776.0	-271.0	-2,260.3	2,276.5	2.00	-2.00	0.00
6,320.0	3.68	263.16	5,815.9	-271.3	-2,263.1	2,279.3	2.00	-2.00	0.00
6,360.0	2.88	263.16	5,855.8	-271.6	-2,265.4	2,281.6	2.00	-2.00	0.00
6,400.0	2.08	263.16	5,895.8	-271.8	-2,267.1	2,283.3	2.00	-2.00	0.00
6,440.0	1.28	263.16	5,935.8	-272.0	-2,268.3	2,284.5	2.00	-2.00	0.00
6,480.0	0.48	263.16	5,975.8	-272.0	-2,268.9	2,285.1	2.00	-2.00	0.00
6,504.2	0.00	0.00	6,000.0	-272.0	-2,269.0	2,285.2	2.00	-2.00	0.00
6,520.0	0.00	0.00	6,015.8	-272.0	-2,269.0	2,285.2	0.00	0.00	0.00
6,560.0	0.00	0.00	6,055.8	-272.0	-2,269.0	2,285.2	0.00	0.00	0.00
6,600.0	0.00	0.00	6,095.8	-272.0	-2,269.0	2,285.2	0.00	0.00	0.00
6,640.0	0.00	0.00	6,135.8	-272.0	-2,269.0	2,285.2	0.00	0.00	0.00
6,680.0	0.00	0.00	6,175.8	-272.0	-2,269.0	2,285.2	0.00	0.00	0.00
6,720.0	0.00	0.00	6,215.8	-272.0	-2,269.0	2,285.2	0.00	0.00	0.00
6,760.0	0.00	0.00	6,255.8	-272.0	-2,269.0	2,285.2	0.00	0.00	0.00
6,800.0	0.00	0.00	6,295.8	-272.0	-2,269.0	2,285.2	0.00	0.00	0.00
6,840.0	0.00	0.00	6,335.8	-272.0	-2,269.0	2,285.2	0.00	0.00	0.00
6,880.0	0.00	0.00	6,375.8	-272.0	-2,269.0	2,285.2	0.00	0.00	0.00
6,920.0	0.00	0.00	6,415.8	-272.0	-2,269.0	2,285.2	0.00	0.00	0.00
6,960.0	0.00	0.00	6,455.8	-272.0	-2,269.0	2,285.2	0.00	0.00	0.00
7,000.0	0.00	0.00	6,495.8	-272.0	-2,269.0	2,285.2	0.00	0.00	0.00
7,040.0	0.00	0.00	6,535.8	-272.0	-2,269.0	2,285.2	0.00	0.00	0.00
7,080.0	0.00	0.00	6,575.8	-272.0	-2,269.0	2,285.2	0.00	0.00	0.00
7,120.0	0.00	0.00	6,615.8	-272.0	-2,269.0	2,285.2	0.00	0.00	0.00
7,160.0	0.00	0.00	6,655.8	-272.0	-2,269.0	2,285.2	0.00	0.00	0.00
7,200.0	0.00	0.00	6,695.8	-272.0	-2,269.0	2,285.2	0.00	0.00	0.00
7,240.0	0.00	0.00	6,735.8	-272.0	-2,269.0	2,285.2	0.00	0.00	0.00
7,280.0	0.00	0.00	6,775.8	-272.0	-2,269.0	2,285.2	0.00	0.00	0.00
7,320.0	0.00	0.00	6,815.8	-272.0	-2,269.0	2,285.2	0.00	0.00	0.00
7,360.0	0.00	0.00	6,855.8	-272.0	-2,269.0	2,285.2	0.00	0.00	0.00
7,400.0	0.00	0.00	6,895.8	-272.0	-2,269.0	2,285.2	0.00	0.00	0.00
7,440.0	0.00	0.00	6,935.8	-272.0	-2,269.0	2,285.2	0.00	0.00	0.00
7,442.2	0.00	0.00	6,938.0	-272.0	-2,269.0	2,285.2	0.00	0.00	0.00
NIOBRARA									
7,480.0	0.00	0.00	6,975.8	-272.0	-2,269.0	2,285.2	0.00	0.00	0.00
7,520.0	0.00	0.00	7,015.8	-272.0	-2,269.0	2,285.2	0.00	0.00	0.00
7,560.0	0.00	0.00	7,055.8	-272.0	-2,269.0	2,285.2	0.00	0.00	0.00
7,600.0	0.00	0.00	7,095.8	-272.0	-2,269.0	2,285.2	0.00	0.00	0.00
7,640.0	0.00	0.00	7,135.8	-272.0	-2,269.0	2,285.2	0.00	0.00	0.00
7,680.0	0.00	0.00	7,175.8	-272.0	-2,269.0	2,285.2	0.00	0.00	0.00
7,700.2	0.00	0.00	7,196.0	-272.0	-2,269.0	2,285.2	0.00	0.00	0.00
FORT HAYS									
7,720.0	0.00	0.00	7,215.8	-272.0	-2,269.0	2,285.2	0.00	0.00	0.00
7,736.2	0.00	0.00	7,232.0	-272.0	-2,269.0	2,285.2	0.00	0.00	0.00
CODELL									
7,760.0	0.00	0.00	7,255.8	-272.0	-2,269.0	2,285.2	0.00	0.00	0.00
7,790.2	0.00	0.00	7,286.0	-272.0	-2,269.0	2,285.2	0.00	0.00	0.00
GREENHORN									
7,800.0	0.00	0.00	7,295.8	-272.0	-2,269.0	2,285.2	0.00	0.00	0.00

Database:	Landmark	Local Co-ordinate Reference:	Well TRIANGLE 32-22
Company:	BAYSWATER EXPLORATION & PRODUCTION	TVD Reference:	WELL @ 4848.0ft (Original Well Elev)
Project:	SEC.22-T7N-R65W	MD Reference:	WELL @ 4848.0ft (Original Well Elev)
Site:	Triangle 4 Pad Sec.22-T7N-R65W	North Reference:	True
Well:	TRIANGLE 32-22	Survey Calculation Method:	Minimum Curvature
Wellbore:	Wellbore #1		
Design:	Plan #1 (10-02-12)		

Planned Survey										
Measured Depth (ft)	Inclination (°)	Azimuth (°)	Vertical Depth (ft)	+N/-S (ft)	+E/-W (ft)	Vertical Section (ft)	Dogleg Rate (°/100ft)	Build Rate (°/100ft)	Turn Rate (°/100ft)	
7,840.0	0.00	0.00	7,335.8	-272.0	-2,269.0	2,285.2	0.00	0.00	0.00	
7,878.2	0.00	0.00	7,374.0	-272.0	-2,269.0	2,285.2	0.00	0.00	0.00	
GRANEROS										
7,880.0	0.00	0.00	7,375.8	-272.0	-2,269.0	2,285.2	0.00	0.00	0.00	
7,889.2	0.00	0.00	7,385.0	-272.0	-2,269.0	2,285.2	0.00	0.00	0.00	

Casing Points					
Measured Depth (ft)	Vertical Depth (ft)	Name		Casing Diameter (")	Hole Diameter (")
601.3	600.0	8 5/8"		8-5/8	12-1/4

Formations						
Measured Depth (ft)	Vertical Depth (ft)	Name	Lithology	Dip (°)	Dip Direction (°)	
4,140.9	3,800.0	PARKMAN		0.00		
7,442.2	6,938.0	NIOBRARA		0.00		
7,700.2	7,196.0	FORT HAYS		0.00		
7,736.2	7,232.0	CODELL		0.00		
7,790.2	7,286.0	GREENHORN		0.00		
7,878.2	7,374.0	GRANEROS		0.00		



Directional

BAYSWATER EXPLORATION & PRODUCTION

SEC.22-T7N-R65W

Triangle 4 Pad Sec.22-T7N-R65W

Triangle 32-22

Wellbore #1

Plan #1 (10-02-12)

Anticollision Report

02 October, 2012

Company:	BAYSWATER EXPLORATION & PRODUCTION	Local Co-ordinate Reference:	Well TRIANGLE 32-22
Project:	SEC.22-T7N-R65W	TVD Reference:	WELL @ 4848.0ft (Original Well Elev)
Reference Site:	Triangle 4 Pad Sec.22-T7N-R65W	MD Reference:	WELL @ 4848.0ft (Original Well Elev)
Site Error:	0.0ft	North Reference:	True
Reference Well:	TRIANGLE 32-22	Survey Calculation Method:	Minimum Curvature
Well Error:	0.0ft	Output errors are at	2.00 sigma
Reference Wellbore	Wellbore #1	Database:	Landmark
Reference Design:	Plan #1 (10-02-12)	Offset TVD Reference:	Offset Datum

Reference	Plan #1 (10-02-12)		
Filter type:	NO GLOBAL FILTER: Using user defined selection & filtering criteria		
Interpolation Method:	Stations	Error Model:	ISCWSA
Depth Range:	Unlimited	Scan Method:	Closest Approach 3D
Results Limited by:	Maximum center-center distance of 10,000.0ft	Error Surface:	Elliptical Conic
Warning Levels Evaluated at:	2.00 Sigma		

Survey Tool Program	Date	10/2/2012		
From (ft)	To (ft)	Survey (Wellbore)	Tool Name	Description
0.0	7,889.2	Plan #1 (10-02-12) (Wellbore #1)	MWD	MWD - Standard

Summary						
Site Name	Reference Measured Depth (ft)	Offset Measured Depth (ft)	Distance Between Centres (ft)	Distance Between Ellipses (ft)	Separation Factor	Warning
Offset Well - Wellbore - Design						
Triangle 4 Pad Sec.22-T7N-R65W						
Triangle 18-22 - Wellbore #1 - Plan #1 (10-02-12)	200.0	200.0	45.2	44.6	67.094	CC, ES
Triangle 18-22 - Wellbore #1 - Plan #1 (10-02-12)	600.0	598.7	67.8	65.3	27.256	SF
Triangle 4-22 - Wellbore #1 - Plan #1 (10-02-12)	200.0	200.0	30.0	29.3	44.423	CC, ES
Triangle 4-22 - Wellbore #1 - Plan #1 (10-02-12)	7,889.2	7,820.2	1,680.0	1,590.3	18.746	SF
Triangle 6-22 - Wellbore #1 - Plan #1 (10-02-12)	200.0	200.0	15.1	14.4	22.423	CC, ES
Triangle 6-22 - Wellbore #1 - Plan #1 (10-02-12)	400.0	399.8	20.6	19.0	13.182	SF

Offset Design												
Triangle 4 Pad Sec.22-T7N-R65W - Triangle 18-22 - Wellbore #1 - Plan #1 (10-02-12)												
Survey Program: 0-MWD												
Offset Site Error: 0.0 ft												
Offset Well Error: 0.0 ft												
Reference	Offset	Semi Major Axis	Distance									
Measured Depth (ft)	Vertical Depth (ft)	Measured Depth (ft)	Vertical Depth (ft)	Reference (ft)	Offset (ft)	Highside Toolface (°)	Offset Wellbore Centre +N/-S (ft)	+E/-W (ft)	Between Centres (ft)	Between Ellipses (ft)	Minimum Separation (ft)	Separation Factor
0.0	0.0	0.0	0.0	0.0	0.0	37.89	35.7	27.8	45.2			
100.0	100.0	100.0	100.0	0.1	0.1	37.89	35.7	27.8	45.2	45.0	0.22	201.282
200.0	200.0	200.0	200.0	0.3	0.3	37.89	35.7	27.8	45.2	44.6	0.67	67.094 CC, ES
300.0	300.0	300.0	300.0	0.6	0.6	136.24	35.7	27.8	46.5	45.4	1.12	41.669
400.0	399.8	399.8	399.8	0.8	0.8	140.30	35.7	27.8	50.4	48.8	1.56	32.266
500.0	499.5	499.5	499.5	1.0	1.0	145.79	35.7	27.8	57.4	55.4	2.02	28.384
600.0	598.7	598.7	598.7	1.3	1.2	151.47	35.7	27.8	67.8	65.3	2.49	27.256 SF
700.0	697.5	697.5	697.5	1.7	1.5	156.58	35.7	27.8	81.9	79.0	2.96	27.705
800.0	795.6	795.6	795.6	2.0	1.7	160.81	35.7	27.8	99.8	96.3	3.43	29.116
900.0	893.1	894.4	894.4	2.5	1.9	163.52	36.8	26.7	120.7	116.8	3.89	30.998
1,000.0	989.6	993.3	993.1	3.0	2.1	164.46	40.5	23.3	144.0	139.6	4.37	32.933
1,100.0	1,085.3	1,092.0	1,091.4	3.6	2.3	164.31	46.6	17.7	169.3	164.4	4.87	34.735
1,200.0	1,179.8	1,190.3	1,189.1	4.3	2.6	163.48	55.2	9.7	196.7	191.2	5.42	36.311
1,300.0	1,273.2	1,288.3	1,285.9	5.0	2.9	162.23	66.1	-0.5	226.1	220.1	6.01	37.597
1,400.0	1,365.2	1,385.6	1,381.6	5.8	3.2	160.73	79.4	-12.8	257.8	251.1	6.69	38.549
1,500.0	1,455.8	1,482.3	1,475.9	6.7	3.5	159.09	95.0	-27.3	291.7	284.2	7.45	39.155
1,572.0	1,520.1	1,551.4	1,542.8	7.3	3.8	157.85	107.5	-38.9	317.5	309.4	8.06	39.377
1,600.0	1,545.0	1,578.2	1,568.7	7.6	3.9	157.44	112.7	-43.7	327.8	319.4	8.32	39.375
1,700.0	1,633.8	1,672.8	1,659.4	8.6	4.4	155.89	132.2	-61.9	364.0	354.7	9.32	39.059
1,800.0	1,722.5	1,765.6	1,748.3	9.6	4.9	154.55	151.8	-80.0	400.3	390.0	10.37	38.588
1,900.0	1,811.2	1,858.4	1,837.2	10.6	5.3	153.44	171.3	-98.2	436.8	425.4	11.45	38.150

CC - Min centre to center distance or convergent point, SF - min separation factor, ES - min ellipse separation

Company:	BAYSWATER EXPLORATION & PRODUCTION	Local Co-ordinate Reference:	Well TRIANGLE 32-22
Project:	SEC.22-T7N-R65W	TVD Reference:	WELL @ 4848.0ft (Original Well Elev)
Reference Site:	Triangle 4 Pad Sec.22-T7N-R65W	MD Reference:	WELL @ 4848.0ft (Original Well Elev)
Site Error:	0.0ft	North Reference:	True
Reference Well:	TRIANGLE 32-22	Survey Calculation Method:	Minimum Curvature
Well Error:	0.0ft	Output errors are at	2.00 sigma
Reference Wellbore	Wellbore #1	Database:	Landmark
Reference Design:	Plan #1 (10-02-12)	Offset TVD Reference:	Offset Datum

Offset Design Triangle 4 Pad Sec.22-T7N-R65W - Triangle 18-22 - Wellbore #1 - Plan #1 (10-02-12)												Offset Site Error:	0.0 ft
Survey Program: 0-MWD												Offset Well Error:	0.0 ft
Measured Depth (ft)	Vertical Depth (ft)	Measured Depth (ft)	Vertical Depth (ft)	Reference	Offset	Highside Toolface (°)	Offset Wellbore Centre +N/-S (ft)	+E/-W (ft)	Between Centres (ft)	Between Ellipses (ft)	Minimum Separation (ft)	Separation Factor	Warning
2,000.0	1,900.0	1,951.2	1,926.1	11.6	5.8	152.50	190.9	-116.4	473.4	460.9	12.56	37.702	
2,100.0	1,988.7	2,044.0	2,014.9	12.6	6.4	151.69	210.4	-134.5	510.1	496.4	13.68	37.284	
2,200.0	2,077.5	2,136.8	2,103.8	13.6	6.9	151.00	230.0	-152.7	546.9	532.1	14.82	36.897	
2,300.0	2,166.2	2,229.6	2,192.7	14.6	7.4	150.39	249.6	-170.9	583.7	567.7	15.97	36.543	
2,400.0	2,255.0	2,322.4	2,281.6	15.6	7.9	149.85	269.1	-189.1	620.6	603.5	17.13	36.219	
2,500.0	2,343.7	2,415.2	2,370.4	16.6	8.5	149.37	288.7	-207.2	657.5	639.2	18.30	35.924	
2,600.0	2,432.5	2,508.0	2,459.3	17.6	9.0	148.94	308.3	-225.4	694.5	675.0	19.48	35.654	
2,700.0	2,521.2	2,600.8	2,548.2	18.7	9.5	148.56	327.8	-243.6	731.5	710.8	20.66	35.408	
2,800.0	2,610.0	2,693.6	2,637.1	19.7	10.1	148.21	347.4	-261.8	768.5	746.7	21.84	35.182	
2,900.0	2,698.7	2,786.4	2,725.9	20.7	10.6	147.89	366.9	-279.9	805.5	782.5	23.03	34.974	
3,000.0	2,787.5	2,879.2	2,814.8	21.7	11.2	147.61	386.5	-298.1	842.6	818.4	24.22	34.783	
3,100.0	2,876.2	2,972.0	2,903.7	22.7	11.7	147.34	406.1	-316.3	879.7	854.3	25.42	34.607	
3,200.0	2,965.0	3,064.8	2,992.6	23.7	12.2	147.10	425.6	-334.5	916.8	890.1	26.62	34.444	
3,300.0	3,053.7	3,157.6	3,081.4	24.8	12.8	146.88	445.2	-352.6	953.9	926.0	27.81	34.293	
3,400.0	3,142.5	3,250.4	3,170.3	25.8	13.3	146.67	464.8	-370.8	991.0	962.0	29.02	34.153	
3,500.0	3,231.2	3,343.2	3,259.2	26.8	13.9	146.48	484.3	-389.0	1,028.1	997.9	30.22	34.022	
3,600.0	3,320.0	3,436.0	3,348.1	27.8	14.4	146.30	503.9	-407.1	1,065.2	1,033.8	31.42	33.901	
3,700.0	3,408.7	3,528.8	3,436.9	28.8	15.0	146.13	523.4	-425.3	1,102.4	1,069.8	32.63	33.787	
3,800.0	3,497.5	3,621.6	3,525.8	29.8	15.5	145.98	543.0	-443.5	1,139.5	1,105.7	33.83	33.680	
3,900.0	3,586.2	3,714.4	3,614.7	30.9	16.1	145.83	562.6	-461.7	1,176.7	1,141.6	35.04	33.580	
4,000.0	3,675.0	3,807.2	3,703.6	31.9	16.6	145.70	582.1	-479.8	1,213.8	1,177.6	36.25	33.485	
4,100.0	3,763.7	3,900.0	3,792.4	32.9	17.2	145.57	601.7	-498.0	1,251.0	1,213.6	37.46	33.397	
4,200.0	3,852.5	3,992.8	3,881.3	33.9	17.8	145.45	621.3	-516.2	1,288.2	1,249.5	38.67	33.313	
4,300.0	3,941.2	4,085.6	3,970.2	34.9	18.3	145.33	640.8	-534.4	1,325.4	1,285.5	39.88	33.234	
4,400.0	4,030.0	4,178.4	4,059.1	36.0	18.9	145.22	660.4	-552.5	1,362.6	1,321.5	41.09	33.159	
4,500.0	4,118.7	4,271.2	4,147.9	37.0	19.4	145.12	679.9	-570.7	1,399.7	1,357.4	42.30	33.088	
4,600.0	4,207.5	4,364.0	4,236.8	38.0	20.0	145.02	699.5	-588.9	1,436.9	1,393.4	43.52	33.020	
4,700.0	4,296.2	4,456.8	4,325.7	39.0	20.5	144.93	719.1	-607.0	1,474.1	1,429.4	44.73	32.956	
4,800.0	4,385.0	4,549.6	4,414.6	40.0	21.1	144.84	738.6	-625.2	1,511.3	1,465.4	45.94	32.895	
4,900.0	4,473.7	4,642.4	4,503.5	41.0	21.6	144.76	758.2	-643.4	1,548.5	1,501.4	47.16	32.837	
5,000.0	4,562.5	4,735.2	4,592.3	42.1	22.2	144.68	777.8	-661.6	1,585.7	1,537.4	48.37	32.782	
5,100.0	4,651.2	4,828.0	4,681.2	43.1	22.7	144.60	797.3	-679.7	1,622.9	1,573.3	49.59	32.729	
5,132.2	4,679.9	4,857.9	4,709.9	43.4	22.9	144.58	803.6	-685.6	1,634.9	1,584.9	49.98	32.712	
5,200.0	4,740.3	4,921.0	4,770.3	44.0	23.3	144.82	816.9	-698.0	1,659.5	1,608.7	50.79	32.675	
5,300.0	4,830.9	5,014.9	4,860.2	44.8	23.9	145.08	836.7	-716.3	1,693.6	1,641.7	51.94	32.607	
5,400.0	4,922.9	5,109.7	4,951.0	45.5	24.4	145.24	856.7	-734.9	1,725.0	1,671.9	53.09	32.492	
5,500.0	5,016.2	5,203.0	5,040.5	46.1	24.9	145.34	875.8	-752.7	1,753.7	1,699.6	54.15	32.386	
5,600.0	5,110.7	5,296.4	5,131.0	46.7	25.3	145.44	892.9	-768.5	1,779.9	1,724.8	55.04	32.337	
5,700.0	5,206.3	5,390.6	5,223.0	47.2	25.7	145.55	907.9	-782.5	1,803.4	1,747.6	55.83	32.303	
5,800.0	5,302.8	5,485.7	5,316.4	47.6	26.0	145.68	920.8	-794.4	1,824.3	1,767.8	56.51	32.282	
5,900.0	5,400.2	5,581.3	5,410.9	48.0	26.3	145.81	931.5	-804.3	1,842.5	1,785.4	57.09	32.276	
6,000.0	5,498.4	5,677.5	5,506.4	48.4	26.5	145.95	939.8	-812.1	1,858.0	1,800.5	57.55	32.285	
6,100.0	5,597.1	5,774.0	5,602.5	48.6	26.7	146.10	945.9	-817.8	1,870.8	1,812.9	57.91	32.308	
6,200.0	5,696.3	5,870.8	5,699.2	48.9	26.8	146.26	949.6	-821.2	1,880.9	1,822.7	58.15	32.346	
6,300.0	5,795.9	5,967.7	5,796.0	49.0	26.9	146.44	950.9	-822.4	1,888.2	1,829.9	58.29	32.395	
6,400.0	5,895.8	6,067.4	5,895.8	49.1	27.0	146.58	950.9	-822.4	1,892.7	1,834.3	58.37	32.427	
6,504.2	6,000.0	6,171.6	6,000.0	49.2	27.1	49.79	950.9	-822.4	1,894.2	1,835.8	58.44	32.412	
6,600.0	6,095.8	6,267.4	6,095.8	49.3	27.2	49.79	950.9	-822.4	1,894.2	1,835.6	58.62	32.314	
6,700.0	6,195.8	6,367.4	6,195.8	49.3	27.3	49.79	950.9	-822.4	1,894.2	1,835.4	58.81	32.209	
6,800.0	6,295.8	6,467.4	6,295.8	49.4	27.5	49.79	950.9	-822.4	1,894.2	1,835.2	59.00	32.104	
6,900.0	6,395.8	6,567.4	6,395.8	49.4	27.6	49.79	950.9	-822.4	1,894.2	1,835.0	59.20	31.997	

CC - Min centre to center distance or convergent point, SF - min separation factor, ES - min ellipse separation

Company:	BAYSWATER EXPLORATION & PRODUCTION	Local Co-ordinate Reference:	Well TRIANGLE 32-22
Project:	SEC.22-T7N-R65W	TVD Reference:	WELL @ 4848.0ft (Original Well Elev)
Reference Site:	Triangle 4 Pad Sec.22-T7N-R65W	MD Reference:	WELL @ 4848.0ft (Original Well Elev)
Site Error:	0.0ft	North Reference:	True
Reference Well:	TRIANGLE 32-22	Survey Calculation Method:	Minimum Curvature
Well Error:	0.0ft	Output errors are at	2.00 sigma
Reference Wellbore	Wellbore #1	Database:	Landmark
Reference Design:	Plan #1 (10-02-12)	Offset TVD Reference:	Offset Datum

Offset Design Triangle 4 Pad Sec.22-T7N-R65W - Triangle 18-22 - Wellbore #1 - Plan #1 (10-02-12)												Offset Site Error:	0.0 ft
Survey Program: 0-MWD												Offset Well Error:	0.0 ft
Measured Depth (ft)	Vertical Depth (ft)	Measured Depth (ft)	Vertical Depth (ft)	Reference	Offset	Highside Toolface (°)	Offset Wellbore Centre +N/-S (ft)	+E/-W (ft)	Between Centres (ft)	Between Ellipses (ft)	Minimum Separation (ft)	Separation Factor	Warning
7,000.0	6,495.8	6,667.4	6,495.8	49.5	27.7	49.79	950.9	-822.4	1,894.2	1,834.8	59.40	31.890	
7,100.0	6,595.8	6,767.4	6,595.8	49.6	27.8	49.79	950.9	-822.4	1,894.2	1,834.6	59.60	31.781	
7,200.0	6,695.8	6,867.4	6,695.8	49.6	27.9	49.79	950.9	-822.4	1,894.2	1,834.4	59.81	31.673	
7,300.0	6,795.8	6,967.4	6,795.8	49.7	28.0	49.79	950.9	-822.4	1,894.2	1,834.2	60.01	31.563	
7,400.0	6,895.8	7,067.4	6,895.8	49.8	28.1	49.79	950.9	-822.4	1,894.2	1,834.0	60.22	31.453	
7,500.0	6,995.8	7,167.4	6,995.8	49.8	28.3	49.79	950.9	-822.4	1,894.2	1,833.8	60.44	31.343	
7,600.0	7,095.8	7,267.4	7,095.8	49.9	28.4	49.79	950.9	-822.4	1,894.2	1,833.6	60.65	31.231	
7,700.0	7,195.8	7,367.4	7,195.8	50.0	28.5	49.79	950.9	-822.4	1,894.2	1,833.4	60.87	31.120	
7,800.0	7,295.8	7,467.4	7,295.8	50.0	28.6	49.79	950.9	-822.4	1,894.2	1,833.1	61.09	31.007	
7,855.7	7,351.5	7,523.1	7,351.5	50.1	28.7	49.79	950.9	-822.4	1,894.2	1,833.0	61.21	30.945	
7,889.2	7,385.0	7,546.6	7,375.0	50.1	28.7	49.79	950.9	-822.4	1,894.3	1,833.0	61.28	30.914	

Company:	BAYSWATER EXPLORATION & PRODUCTION	Local Co-ordinate Reference:	Well TRIANGLE 32-22
Project:	SEC.22-T7N-R65W	TVD Reference:	WELL @ 4848.0ft (Original Well Elev)
Reference Site:	Triangle 4 Pad Sec.22-T7N-R65W	MD Reference:	WELL @ 4848.0ft (Original Well Elev)
Site Error:	0.0ft	North Reference:	True
Reference Well:	TRIANGLE 32-22	Survey Calculation Method:	Minimum Curvature
Well Error:	0.0ft	Output errors are at	2.00 sigma
Reference Wellbore	Wellbore #1	Database:	Landmark
Reference Design:	Plan #1 (10-02-12)	Offset TVD Reference:	Offset Datum

Offset Design Triangle 4 Pad Sec.22-T7N-R65W - Triangle 4-22 - Wellbore #1 - Plan #1 (10-02-12)													Offset Site Error:	0.0 ft
Survey Program: 0-MWD													Offset Well Error:	0.0 ft
Measured Depth (ft)	Vertical Depth (ft)	Measured Depth (ft)	Vertical Depth (ft)	Reference (ft)	Offset (ft)	Semi Major Axis (ft)	Highside Toolface (°)	Offset Wellbore Centre +N/-S (ft)	+E/-W (ft)	Between Centres (ft)	Between Ellipses (ft)	Minimum Separation (ft)	Separation Factor	Warning
0.0	0.0	0.0	0.0	0.0	0.0	37.75	37.75	23.7	18.3	30.0				
100.0	100.0	100.0	100.0	0.1	0.1	37.75	37.75	23.7	18.3	30.0	29.7	0.22	133.270	
200.0	200.0	200.0	200.0	0.3	0.3	37.75	37.75	23.7	18.3	30.0	29.3	0.67	44.423 CC, ES	
300.0	300.0	300.0	300.0	0.6	0.6	133.65	133.65	24.7	16.9	31.2	30.0	1.11	28.023	
400.0	399.8	399.9	399.7	0.8	0.8	131.21	131.21	27.9	12.8	34.8	33.2	1.56	22.275	
500.0	499.5	499.6	499.0	1.0	1.0	128.12	128.12	33.1	5.8	41.0	38.9	2.06	19.917	
600.0	598.7	599.0	597.7	1.3	1.3	125.08	125.08	40.3	-3.8	49.8	47.1	2.62	19.026	
700.0	697.5	698.0	695.5	1.7	1.7	122.42	122.42	49.6	-16.2	61.1	57.9	3.25	18.801	
800.0	795.6	796.5	792.2	2.0	2.0	120.23	120.23	60.9	-31.1	75.1	71.1	3.98	18.868	
900.0	893.1	894.4	887.7	2.5	2.5	118.46	118.46	74.0	-48.6	91.6	86.8	4.81	19.046	
1,000.0	989.6	991.7	981.7	3.0	2.9	117.02	117.02	89.0	-68.6	110.6	104.9	5.75	19.248	
1,100.0	1,085.3	1,088.3	1,074.1	3.6	3.5	115.83	115.83	105.7	-90.9	132.1	125.3	6.80	19.436	
1,200.0	1,179.8	1,184.0	1,164.8	4.3	4.1	114.82	114.82	124.2	-115.4	156.0	148.0	7.96	19.594	
1,300.0	1,273.2	1,278.9	1,253.5	5.0	4.8	113.94	113.94	144.3	-142.2	182.2	173.0	9.24	19.718	
1,400.0	1,365.2	1,372.8	1,340.3	5.8	5.5	113.15	113.15	165.9	-170.9	210.7	200.1	10.64	19.812	
1,500.0	1,455.8	1,465.9	1,425.1	6.7	6.2	112.43	112.43	189.0	-201.6	241.5	229.4	12.14	19.888	
1,572.0	1,520.1	1,534.0	1,486.7	7.3	6.8	112.14	112.14	206.4	-224.9	264.7	251.4	13.30	19.904	
1,600.0	1,545.0	1,560.4	1,510.6	7.6	7.1	112.27	112.27	213.2	-233.9	273.9	260.1	13.76	19.903	
1,700.0	1,633.8	1,654.9	1,596.1	8.6	7.9	112.66	112.66	237.4	-266.1	306.6	291.2	15.42	19.889	
1,800.0	1,722.5	1,749.4	1,681.5	9.6	8.7	112.98	112.98	261.6	-298.3	339.4	322.3	17.09	19.861	
1,900.0	1,811.2	1,843.9	1,767.0	10.6	9.6	113.24	113.24	285.8	-330.5	372.2	353.4	18.77	19.829	
2,000.0	1,900.0	1,938.3	1,852.4	11.6	10.4	113.46	113.46	310.0	-362.7	404.9	384.5	20.46	19.795	
2,100.0	1,988.7	2,032.8	1,937.9	12.6	11.3	113.64	113.64	334.2	-394.9	437.7	415.5	22.15	19.761	
2,200.0	2,077.5	2,127.3	2,023.3	13.6	12.1	113.80	113.80	358.4	-427.1	470.5	446.6	23.85	19.728	
2,300.0	2,166.2	2,221.7	2,108.8	14.6	12.9	113.94	113.94	382.6	-459.3	503.2	477.7	25.55	19.697	
2,400.0	2,255.0	2,316.2	2,194.2	15.6	13.8	114.06	114.06	406.8	-491.5	536.0	508.8	27.25	19.668	
2,500.0	2,343.7	2,410.7	2,279.7	16.6	14.6	114.17	114.17	431.0	-523.8	568.8	539.8	28.96	19.641	
2,600.0	2,432.5	2,505.1	2,365.1	17.6	15.5	114.27	114.27	455.2	-556.0	601.6	570.9	30.67	19.615	
2,700.0	2,521.2	2,599.6	2,450.6	18.7	16.4	114.35	114.35	479.4	-588.2	634.4	602.0	32.38	19.591	
2,800.0	2,610.0	2,694.1	2,536.0	19.7	17.2	114.43	114.43	503.6	-620.4	667.2	633.1	34.09	19.569	
2,900.0	2,698.7	2,788.5	2,621.5	20.7	18.1	114.50	114.50	527.8	-652.6	699.9	664.1	35.81	19.548	
3,000.0	2,787.5	2,883.0	2,706.9	21.7	18.9	114.57	114.57	552.0	-684.8	732.7	695.2	37.52	19.529	
3,100.0	2,876.2	2,977.5	2,792.4	22.7	19.8	114.63	114.63	576.2	-717.0	765.5	726.3	39.24	19.511	
3,200.0	2,965.0	3,072.0	2,877.8	23.7	20.6	114.68	114.68	600.4	-749.2	798.3	757.4	40.95	19.494	
3,300.0	3,053.7	3,166.4	2,963.3	24.8	21.5	114.73	114.73	624.6	-781.4	831.1	788.4	42.67	19.478	
3,400.0	3,142.5	3,260.9	3,048.7	25.8	22.3	114.78	114.78	648.8	-813.6	863.9	819.5	44.39	19.463	
3,500.0	3,231.2	3,355.4	3,134.2	26.8	23.2	114.82	114.82	673.0	-845.8	896.7	850.6	46.10	19.449	
3,600.0	3,320.0	3,449.8	3,219.6	27.8	24.0	114.86	114.86	697.2	-878.0	929.5	881.6	47.82	19.436	
3,700.0	3,408.7	3,544.3	3,305.1	28.8	24.9	114.89	114.89	721.4	-910.3	962.3	912.7	49.54	19.423	
3,800.0	3,497.5	3,638.8	3,390.5	29.8	25.8	114.93	114.93	745.6	-942.5	995.0	943.8	51.26	19.412	
3,900.0	3,586.2	3,733.2	3,476.0	30.9	26.6	114.96	114.96	769.8	-974.7	1,027.8	974.9	52.98	19.400	
4,000.0	3,675.0	3,827.7	3,561.4	31.9	27.5	114.99	114.99	793.9	-1,006.9	1,060.6	1,005.9	54.70	19.390	
4,100.0	3,763.7	3,922.2	3,646.8	32.9	28.3	115.02	115.02	818.1	-1,039.1	1,093.4	1,037.0	56.42	19.380	
4,200.0	3,852.5	4,016.6	3,732.3	33.9	29.2	115.05	115.05	842.3	-1,071.3	1,126.2	1,068.1	58.14	19.370	
4,300.0	3,941.2	4,111.1	3,817.7	34.9	30.0	115.07	115.07	866.5	-1,103.5	1,159.0	1,099.1	59.86	19.361	
4,400.0	4,030.0	4,205.6	3,903.2	36.0	30.9	115.10	115.10	890.7	-1,135.7	1,191.8	1,130.2	61.58	19.353	
4,500.0	4,118.7	4,300.1	3,988.6	37.0	31.8	115.12	115.12	914.9	-1,167.9	1,224.6	1,161.3	63.30	19.344	
4,600.0	4,207.5	4,394.5	4,074.1	38.0	32.6	115.14	115.14	939.1	-1,200.1	1,257.4	1,192.3	65.03	19.336	
4,700.0	4,296.2	4,489.0	4,159.5	39.0	33.5	115.16	115.16	963.3	-1,232.3	1,290.2	1,223.4	66.75	19.329	
4,800.0	4,385.0	4,583.5	4,245.0	40.0	34.3	115.18	115.18	987.5	-1,264.5	1,323.0	1,254.5	68.47	19.322	
4,900.0	4,473.7	4,677.9	4,330.4	41.0	35.2	115.20	115.20	1,011.7	-1,296.7	1,355.8	1,285.6	70.19	19.315	

CC - Min centre to center distance or convergent point, SF - min separation factor, ES - min ellipse separation

Company:	BAYSWATER EXPLORATION & PRODUCTION	Local Co-ordinate Reference:	Well TRIANGLE 32-22
Project:	SEC.22-T7N-R65W	TVD Reference:	WELL @ 4848.0ft (Original Well Elev)
Reference Site:	Triangle 4 Pad Sec.22-T7N-R65W	MD Reference:	WELL @ 4848.0ft (Original Well Elev)
Site Error:	0.0ft	North Reference:	True
Reference Well:	TRIANGLE 32-22	Survey Calculation Method:	Minimum Curvature
Well Error:	0.0ft	Output errors are at	2.00 sigma
Reference Wellbore	Wellbore #1	Database:	Landmark
Reference Design:	Plan #1 (10-02-12)	Offset TVD Reference:	Offset Datum

Offset Design Triangle 4 Pad Sec.22-T7N-R65W - Triangle 4-22 - Wellbore #1 - Plan #1 (10-02-12)													Offset Site Error:	0.0 ft
Survey Program: 0-MWD													Offset Well Error:	0.0 ft
Measured Depth (ft)	Vertical Depth (ft)	Measured Depth (ft)	Vertical Depth (ft)	Reference	Offset	Semi Major Axis Toolface (°)	Offset Wellbore Centre +N/-S (ft)	+E/-W (ft)	Between Centres (ft)	Between Ellipses (ft)	Minimum Separation (ft)	Separation Factor	Warning	
5,000.0	4,562.5	4,772.4	4,415.9	42.1	36.0	115.22	1,035.9	-1,329.0	1,388.5	1,316.6	71.91	19.308		
5,100.0	4,651.2	4,866.9	4,501.3	43.1	36.9	115.23	1,060.1	-1,361.2	1,421.3	1,347.7	73.64	19.302		
5,132.2	4,679.9	4,897.3	4,528.9	43.4	37.2	115.24	1,067.9	-1,371.5	1,431.9	1,357.7	74.19	19.300		
5,200.0	4,740.3	4,961.4	4,586.9	44.0	37.8	115.64	1,084.4	-1,393.4	1,453.8	1,378.5	75.35	19.294		
5,300.0	4,830.9	5,056.4	4,672.8	44.8	38.6	116.09	1,108.7	-1,425.8	1,484.9	1,408.0	76.95	19.296		
5,400.0	4,922.9	5,151.7	4,759.0	45.5	39.5	116.39	1,133.1	-1,458.3	1,514.6	1,436.1	78.52	19.289		
5,500.0	5,016.2	5,259.2	4,856.7	46.1	40.3	116.55	1,159.9	-1,494.0	1,542.5	1,462.5	80.01	19.280		
5,600.0	5,110.7	5,371.5	4,960.6	46.7	41.1	116.68	1,185.6	-1,528.2	1,568.1	1,486.7	81.35	19.275		
5,700.0	5,206.3	5,485.2	5,067.4	47.2	41.7	116.79	1,209.1	-1,559.5	1,591.1	1,508.5	82.57	19.269		
5,800.0	5,302.8	5,600.3	5,176.9	47.6	42.3	116.89	1,230.3	-1,587.7	1,611.6	1,527.9	83.67	19.261		
5,900.0	5,400.2	5,716.5	5,288.8	48.0	42.9	116.98	1,249.0	-1,612.6	1,629.5	1,544.8	84.63	19.255		
6,000.0	5,498.4	5,833.8	5,403.0	48.4	43.3	117.05	1,265.1	-1,634.0	1,644.7	1,559.3	85.46	19.246		
6,100.0	5,597.1	5,951.9	5,519.0	48.6	43.7	117.10	1,278.5	-1,651.7	1,657.3	1,571.1	86.15	19.237		
6,200.0	5,696.3	6,070.8	5,636.6	48.9	44.0	117.15	1,289.0	-1,665.8	1,667.1	1,580.4	86.72	19.224		
6,300.0	5,795.9	6,190.3	5,755.4	49.0	44.3	117.18	1,296.6	-1,675.9	1,674.1	1,587.0	87.15	19.210		
6,400.0	5,895.8	6,310.1	5,874.9	49.1	44.4	117.20	1,301.2	-1,682.1	1,678.4	1,591.0	87.46	19.192		
6,504.2	6,000.0	6,435.2	6,000.0	49.2	44.5	20.37	1,302.9	-1,684.3	1,680.0	1,592.3	87.64	19.168		
6,600.0	6,095.8	6,531.0	6,095.8	49.3	44.6	20.37	1,302.9	-1,684.3	1,680.0	1,592.2	87.76	19.143		
6,700.0	6,195.8	6,631.0	6,195.8	49.3	44.7	20.37	1,302.9	-1,684.3	1,680.0	1,592.1	87.89	19.114		
6,800.0	6,295.8	6,731.0	6,295.8	49.4	44.7	20.37	1,302.9	-1,684.3	1,680.0	1,591.9	88.03	19.085		
6,900.0	6,395.8	6,831.0	6,395.8	49.4	44.8	20.37	1,302.9	-1,684.3	1,680.0	1,591.8	88.16	19.055		
7,000.0	6,495.8	6,931.0	6,495.8	49.5	44.9	20.37	1,302.9	-1,684.3	1,680.0	1,591.7	88.30	19.026		
7,100.0	6,595.8	7,031.0	6,595.8	49.6	44.9	20.37	1,302.9	-1,684.3	1,680.0	1,591.5	88.44	18.996		
7,200.0	6,695.8	7,131.0	6,695.8	49.6	45.0	20.37	1,302.9	-1,684.3	1,680.0	1,591.4	88.58	18.965		
7,300.0	6,795.8	7,231.0	6,795.8	49.7	45.1	20.37	1,302.9	-1,684.3	1,680.0	1,591.2	88.73	18.934		
7,400.0	6,895.8	7,331.0	6,895.8	49.8	45.2	20.37	1,302.9	-1,684.3	1,680.0	1,591.1	88.87	18.903		
7,500.0	6,995.8	7,431.0	6,995.8	49.8	45.2	20.37	1,302.9	-1,684.3	1,680.0	1,590.9	89.02	18.872		
7,600.0	7,095.8	7,531.0	7,095.8	49.9	45.3	20.37	1,302.9	-1,684.3	1,680.0	1,590.8	89.17	18.840		
7,700.0	7,195.8	7,631.0	7,195.8	50.0	45.4	20.37	1,302.9	-1,684.3	1,680.0	1,590.6	89.32	18.808		
7,800.0	7,295.8	7,731.0	7,295.8	50.0	45.5	20.37	1,302.9	-1,684.3	1,680.0	1,590.5	89.48	18.775		
7,889.2	7,385.0	7,820.2	7,385.0	50.1	45.5	20.37	1,302.9	-1,684.3	1,680.0	1,590.3	89.62	18.746 SF		

Company:	BAYSWATER EXPLORATION & PRODUCTION	Local Co-ordinate Reference:	Well TRIANGLE 32-22
Project:	SEC.22-T7N-R65W	TVD Reference:	WELL @ 4848.0ft (Original Well Elev)
Reference Site:	Triangle 4 Pad Sec.22-T7N-R65W	MD Reference:	WELL @ 4848.0ft (Original Well Elev)
Site Error:	0.0ft	North Reference:	True
Reference Well:	TRIANGLE 32-22	Survey Calculation Method:	Minimum Curvature
Well Error:	0.0ft	Output errors are at	2.00 sigma
Reference Wellbore	Wellbore #1	Database:	Landmark
Reference Design:	Plan #1 (10-02-12)	Offset TVD Reference:	Offset Datum

Offset Design Triangle 4 Pad Sec.22-T7N-R65W - Triangle 6-22 - Wellbore #1 - Plan #1 (10-02-12)												Offset Site Error:	0.0 ft
Survey Program: 0-MWD												Offset Well Error:	0.0 ft
Measured Depth (ft)	Vertical Depth (ft)	Measured Depth (ft)	Vertical Depth (ft)	Reference (ft)	Offset (ft)	Highside Toolface (°)	Offset Wellbore Centre +N/-S (ft)	+E/-W (ft)	Between Centres (ft)	Between Ellipses (ft)	Minimum Separation (ft)	Separation Factor	Warning
0.0	0.0	0.0	0.0	0.0	0.0	37.33	12.0	9.2	15.1	15.1	0.00	N/A	
100.0	100.0	100.0	100.0	0.1	0.1	37.33	12.0	9.2	15.1	14.9	0.22	67.270	
200.0	200.0	200.0	200.0	0.3	0.3	37.33	12.0	9.2	15.1	14.4	0.67	22.423 CC, ES	
300.0	300.0	300.0	300.0	0.6	0.6	138.53	12.0	9.2	16.4	15.3	1.12	14.683	
400.0	399.8	399.8	399.8	0.8	0.8	148.17	12.0	9.2	20.6	19.0	1.56	13.182 SF	
500.0	499.5	499.5	499.5	1.0	1.0	157.42	12.0	9.2	28.4	26.4	2.02	14.056	
600.0	598.7	598.7	598.7	1.3	1.2	164.09	12.0	9.2	39.9	37.4	2.48	16.107	
700.0	697.5	697.5	697.5	1.7	1.5	168.48	12.0	9.2	55.1	52.2	2.94	18.763	
800.0	795.6	795.6	795.6	2.0	1.7	171.38	12.0	9.2	73.9	70.5	3.40	21.744	
900.0	893.1	893.1	893.1	2.5	1.9	173.33	12.0	9.2	96.2	92.4	3.86	24.904	
1,000.0	989.6	989.6	989.6	3.0	2.1	174.70	12.0	9.2	122.0	117.7	4.33	28.166	
1,100.0	1,085.3	1,085.3	1,085.3	3.6	2.3	175.67	12.0	9.2	151.1	146.3	4.80	31.483	
1,200.0	1,179.8	1,179.8	1,179.8	4.3	2.5	176.40	12.0	9.2	183.6	178.4	5.27	34.827	
1,300.0	1,273.2	1,273.2	1,273.2	5.0	2.7	176.94	12.0	9.2	219.4	213.7	5.75	38.177	
1,400.0	1,365.2	1,365.2	1,365.2	5.8	3.0	177.37	12.0	9.2	258.4	252.2	6.22	41.524	
1,500.0	1,455.8	1,455.8	1,455.8	6.7	3.2	177.70	12.0	9.2	300.7	294.0	6.70	44.859	
1,572.0	1,520.1	1,520.1	1,520.1	7.3	3.3	177.90	12.0	9.2	333.0	326.0	7.05	47.251	
1,600.0	1,545.0	1,545.0	1,545.0	7.6	3.4	177.98	12.0	9.2	345.9	338.7	7.20	48.062	
1,700.0	1,633.8	1,633.8	1,633.8	8.6	3.6	178.21	12.0	9.2	392.0	384.2	7.73	50.678	
1,800.0	1,722.5	1,722.5	1,722.5	9.6	3.8	178.40	12.0	9.2	438.0	429.8	8.28	52.918	
1,900.0	1,811.2	1,811.2	1,811.2	10.6	4.0	178.55	12.0	9.2	484.1	475.3	8.83	54.855	
2,000.0	1,900.0	1,900.0	1,900.0	11.6	4.2	178.68	12.0	9.2	530.2	520.8	9.38	56.545	
2,100.0	1,988.7	1,988.7	1,988.7	12.6	4.4	178.78	12.0	9.2	576.3	566.3	9.93	58.029	
2,200.0	2,077.5	2,094.5	2,094.5	13.6	4.6	178.80	12.7	7.8	621.3	610.8	10.51	59.121	
2,300.0	2,166.2	2,205.8	2,205.6	14.6	4.8	178.59	15.3	2.5	663.5	652.4	11.09	59.836	
2,400.0	2,255.0	2,320.2	2,319.6	15.6	5.1	178.19	19.9	-6.9	702.7	691.0	11.68	60.136	
2,500.0	2,343.7	2,437.6	2,435.9	16.6	5.4	177.60	26.7	-20.8	738.9	726.6	12.30	60.059	
2,600.0	2,432.5	2,535.6	2,532.7	17.6	5.6	177.04	33.6	-34.7	773.0	760.1	12.90	59.903	
2,700.0	2,521.2	2,629.4	2,625.3	18.7	5.9	176.55	40.2	-48.1	807.2	793.7	13.52	59.719	
2,800.0	2,610.0	2,723.2	2,717.8	19.7	6.1	176.10	46.8	-61.5	841.4	827.3	14.13	59.557	
2,900.0	2,698.7	2,816.9	2,810.4	20.7	6.4	175.69	53.3	-74.9	875.6	860.9	14.75	59.349	
3,000.0	2,787.5	2,910.7	2,903.0	21.7	6.7	175.30	59.9	-88.3	909.9	894.5	15.39	59.136	
3,100.0	2,876.2	3,004.5	2,995.5	22.7	7.0	174.95	66.5	-101.7	944.2	928.2	16.03	58.917	
3,200.0	2,965.0	3,098.2	3,088.1	23.7	7.3	174.61	73.1	-115.0	978.6	961.9	16.67	58.694	
3,300.0	3,053.7	3,192.0	3,180.7	24.8	7.6	174.30	79.7	-128.4	1,013.0	995.7	17.33	58.469	
3,400.0	3,142.5	3,285.8	3,273.3	25.8	7.9	174.02	86.3	-141.8	1,047.4	1,029.4	17.98	58.244	
3,500.0	3,231.2	3,379.5	3,365.8	26.8	8.2	173.75	92.8	-155.2	1,081.8	1,063.2	18.65	58.021	
3,600.0	3,320.0	3,473.3	3,458.4	27.8	8.5	173.49	99.4	-168.6	1,116.3	1,097.0	19.31	57.801	
3,700.0	3,408.7	3,567.1	3,551.0	28.8	8.8	173.25	106.0	-182.0	1,150.7	1,130.7	19.98	57.584	
3,800.0	3,497.5	3,660.8	3,643.6	29.8	9.1	173.03	112.6	-195.4	1,185.2	1,164.6	20.66	57.372	
3,900.0	3,586.2	3,754.6	3,736.1	30.9	9.4	172.82	119.2	-208.8	1,219.7	1,198.4	21.34	57.164	
4,000.0	3,675.0	3,848.4	3,828.7	31.9	9.7	172.61	125.8	-222.2	1,254.2	1,232.2	22.02	56.961	
4,100.0	3,763.7	3,942.1	3,921.3	32.9	10.1	172.42	132.3	-235.6	1,288.8	1,266.0	22.70	56.763	
4,200.0	3,852.5	4,035.9	4,013.8	33.9	10.4	172.24	138.9	-249.0	1,323.3	1,299.9	23.39	56.570	
4,300.0	3,941.2	4,129.7	4,106.4	34.9	10.7	172.07	145.5	-262.4	1,357.8	1,333.8	24.08	56.382	
4,400.0	4,030.0	4,223.4	4,199.0	36.0	11.1	171.91	152.1	-275.7	1,392.4	1,367.6	24.78	56.200	
4,500.0	4,118.7	4,317.2	4,291.6	37.0	11.4	171.76	158.7	-289.1	1,427.0	1,401.5	25.47	56.023	
4,600.0	4,207.5	4,411.0	4,384.1	38.0	11.7	171.61	165.3	-302.5	1,461.5	1,435.4	26.17	55.851	
4,700.0	4,296.2	4,504.7	4,476.7	39.0	12.0	171.47	171.8	-315.9	1,496.1	1,469.3	26.87	55.684	
4,800.0	4,385.0	4,591.2	4,562.0	40.0	12.3	171.35	177.9	-328.2	1,530.8	1,503.2	27.54	55.579	
4,900.0	4,473.7	4,657.4	4,627.6	41.0	12.5	171.29	182.0	-336.6	1,566.6	1,538.5	28.12	55.711	

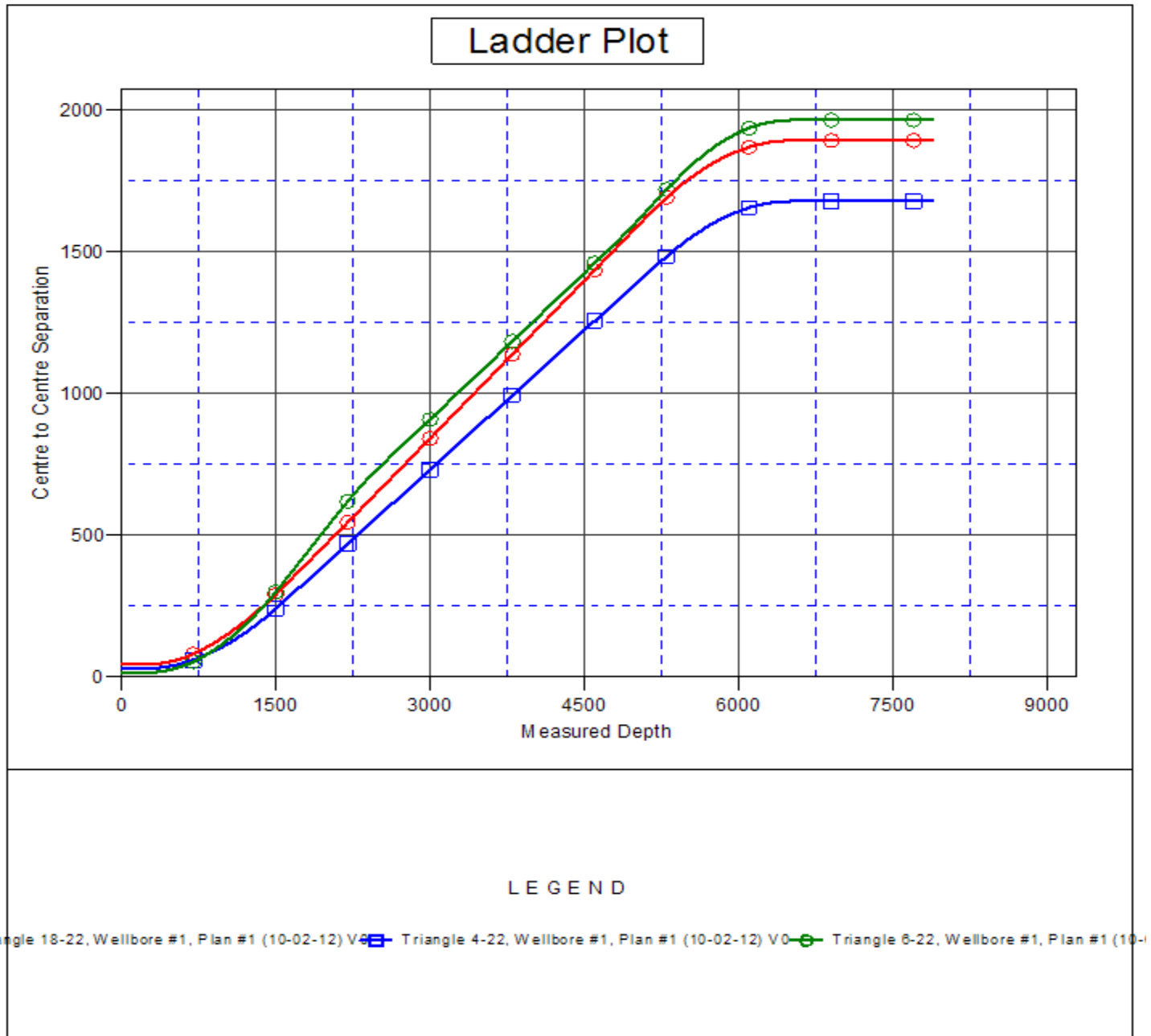
CC - Min centre to center distance or convergent point, SF - min separation factor, ES - min ellipse separation

Company:	BAYSWATER EXPLORATION & PRODUCTION	Local Co-ordinate Reference:	Well TRIANGLE 32-22
Project:	SEC.22-T7N-R65W	TVD Reference:	WELL @ 4848.0ft (Original Well Elev)
Reference Site:	Triangle 4 Pad Sec.22-T7N-R65W	MD Reference:	WELL @ 4848.0ft (Original Well Elev)
Site Error:	0.0ft	North Reference:	True
Reference Well:	TRIANGLE 32-22	Survey Calculation Method:	Minimum Curvature
Well Error:	0.0ft	Output errors are at	2.00 sigma
Reference Wellbore	Wellbore #1	Database:	Landmark
Reference Design:	Plan #1 (10-02-12)	Offset TVD Reference:	Offset Datum

Offset Design Triangle 4 Pad Sec.22-T7N-R65W - Triangle 6-22 - Wellbore #1 - Plan #1 (10-02-12)													Offset Site Error: 0.0 ft	
Survey Program: 0-MWD													Offset Well Error: 0.0 ft	
Reference		Offset		Semi Major Axis			Distance							
Measured Depth	Vertical Depth	Measured Depth	Vertical Depth	Reference	Offset	Highside Toolface	Offset Wellbore Centre		Between Centres	Between Ellipses	Minimum Separation	Separation Factor	Warning	
(ft)	(ft)	(ft)	(ft)	(ft)	(ft)	(°)	+N/-S (ft)	+E/-W (ft)	(ft)	(ft)	(ft)			
5,000.0	4,562.5	4,722.8	4,692.5	42.1	12.7	171.27	185.4	-343.6	1,604.1	1,575.4	28.68	55.926		
5,100.0	4,651.2	4,800.0	4,769.4	43.1	12.9	171.29	188.6	-350.1	1,643.3	1,614.0	29.25	56.175		
5,132.2	4,679.9	4,800.0	4,769.4	43.4	12.9	171.29	188.6	-350.1	1,656.1	1,626.8	29.39	56.357		
5,200.0	4,740.3	4,851.0	4,820.2	44.0	13.0	171.42	190.2	-353.4	1,683.1	1,653.2	29.82	56.440		
5,300.0	4,830.9	4,900.0	4,869.2	44.8	13.1	171.59	191.4	-355.7	1,721.6	1,691.2	30.36	56.702		
5,400.0	4,922.9	4,978.2	4,947.4	45.5	13.2	171.81	192.5	-358.0	1,758.3	1,727.4	30.89	56.925		
5,500.0	5,016.2	5,047.0	5,016.2	46.1	13.3	172.02	192.7	-358.4	1,793.4	1,762.1	31.35	57.213		
5,600.0	5,110.7	5,141.5	5,110.7	46.7	13.5	172.26	192.7	-358.4	1,825.8	1,794.0	31.80	57.414		
5,700.0	5,206.3	5,237.1	5,206.3	47.2	13.6	172.46	192.7	-358.4	1,855.0	1,822.7	32.23	57.563		
5,800.0	5,302.8	5,333.7	5,302.8	47.6	13.8	172.63	192.7	-358.4	1,880.8	1,848.2	32.61	57.677		
5,900.0	5,400.2	5,431.1	5,400.2	48.0	14.0	172.78	192.7	-358.4	1,903.3	1,870.3	32.95	57.761		
6,000.0	5,498.4	5,529.2	5,498.4	48.4	14.2	172.90	192.7	-358.4	1,922.3	1,889.1	33.25	57.818		
6,100.0	5,597.1	5,627.9	5,597.1	48.6	14.4	173.00	192.7	-358.4	1,938.0	1,904.5	33.50	57.848		
6,200.0	5,696.3	5,727.2	5,696.3	48.9	14.5	173.07	192.7	-358.4	1,950.2	1,916.5	33.71	57.855		
6,300.0	5,795.9	5,826.8	5,795.9	49.0	14.7	173.12	192.7	-358.4	1,959.0	1,925.2	33.87	57.839		
6,400.0	5,895.8	5,926.6	5,895.8	49.1	14.9	173.15	192.7	-358.4	1,964.4	1,930.4	33.99	57.800		
6,504.2	6,000.0	6,030.8	6,000.0	49.2	15.1	76.33	192.7	-358.4	1,966.3	1,932.2	34.06	57.728		
6,600.0	6,095.8	6,126.6	6,095.8	49.3	15.3	76.33	192.7	-358.4	1,966.3	1,931.9	34.37	57.205		
6,700.0	6,195.8	6,226.6	6,195.8	49.3	15.5	76.33	192.7	-358.4	1,966.3	1,931.6	34.70	56.664		
6,800.0	6,295.8	6,326.6	6,295.8	49.4	15.7	76.33	192.7	-358.4	1,966.3	1,931.2	35.03	56.130		
6,900.0	6,395.8	6,426.6	6,395.8	49.4	15.9	76.33	192.7	-358.4	1,966.3	1,930.9	35.36	55.602		
7,000.0	6,495.8	6,526.6	6,495.8	49.5	16.1	76.33	192.7	-358.4	1,966.3	1,930.6	35.70	55.080		
7,100.0	6,595.8	6,626.6	6,595.8	49.6	16.3	76.33	192.7	-358.4	1,966.3	1,930.2	36.04	54.566		
7,200.0	6,695.8	6,726.6	6,695.8	49.6	16.5	76.33	192.7	-358.4	1,966.3	1,929.9	36.37	54.057		
7,300.0	6,795.8	6,826.6	6,795.8	49.7	16.7	76.33	192.7	-358.4	1,966.3	1,929.6	36.72	53.555		
7,400.0	6,895.8	6,926.6	6,895.8	49.8	16.9	76.33	192.7	-358.4	1,966.3	1,929.2	37.06	53.059		
7,500.0	6,995.8	7,026.6	6,995.8	49.8	17.1	76.33	192.7	-358.4	1,966.3	1,928.9	37.40	52.570		
7,600.0	7,095.8	7,126.6	7,095.8	49.9	17.3	76.33	192.7	-358.4	1,966.3	1,928.5	37.75	52.087		
7,700.0	7,195.8	7,226.6	7,195.8	50.0	17.5	76.33	192.7	-358.4	1,966.3	1,928.2	38.10	51.610		
7,800.0	7,295.8	7,326.6	7,295.8	50.0	17.7	76.33	192.7	-358.4	1,966.3	1,927.8	38.45	51.139		
7,853.5	7,349.2	7,380.1	7,349.2	50.1	17.8	76.33	192.7	-358.4	1,966.3	1,927.6	38.64	50.890		
7,889.2	7,385.0	7,400.8	7,370.0	50.1	17.8	76.33	192.7	-358.4	1,966.3	1,927.6	38.73	50.768		

Company:	BAYSWATER EXPLORATION & PRODUCTION	Local Co-ordinate Reference:	Well TRIANGLE 32-22
Project:	SEC.22-T7N-R65W	TVD Reference:	WELL @ 4848.0ft (Original Well Elev)
Reference Site:	Triangle 4 Pad Sec.22-T7N-R65W	MD Reference:	WELL @ 4848.0ft (Original Well Elev)
Site Error:	0.0ft	North Reference:	True
Reference Well:	TRIANGLE 32-22	Survey Calculation Method:	Minimum Curvature
Well Error:	0.0ft	Output errors are at	2.00 sigma
Reference Wellbore	Wellbore #1	Database:	Landmark
Reference Design:	Plan #1 (10-02-12)	Offset TVD Reference:	Offset Datum

Reference Depths are relative to WELL @ 4848.0ft (Original Well Elev) Coordinates are relative to: TRIANGLE 32-22
Offset Depths are relative to Offset Datum
Central Meridian is -105.500000 °
Coordinate System is US State Plane 1983, Colorado Northern Zone
Grid Convergence at Surface is: 0.55°



Company:	BAYSWATER EXPLORATION & PRODUCTION	Local Co-ordinate Reference:	Well TRIANGLE 32-22
Project:	SEC.22-T7N-R65W	TVD Reference:	WELL @ 4848.0ft (Original Well Elev)
Reference Site:	Triangle 4 Pad Sec.22-T7N-R65W	MD Reference:	WELL @ 4848.0ft (Original Well Elev)
Site Error:	0.0ft	North Reference:	True
Reference Well:	TRIANGLE 32-22	Survey Calculation Method:	Minimum Curvature
Well Error:	0.0ft	Output errors are at	2.00 sigma
Reference Wellbore	Wellbore #1	Database:	Landmark
Reference Design:	Plan #1 (10-02-12)	Offset TVD Reference:	Offset Datum

Reference Depths are relative to WELL @ 4848.0ft (Original Well Elev) Coordinates are relative to: TRIANGLE 32-22
Offset Depths are relative to Offset Datum Coordinate System is US State Plane 1983, Colorado Northern Zone
Central Meridian is -105.500000 ° Grid Convergence at Surface is: 0.55°

