

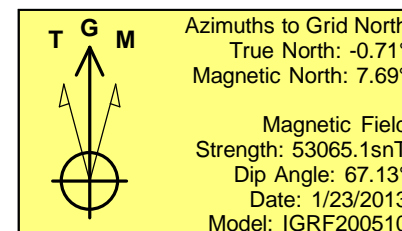
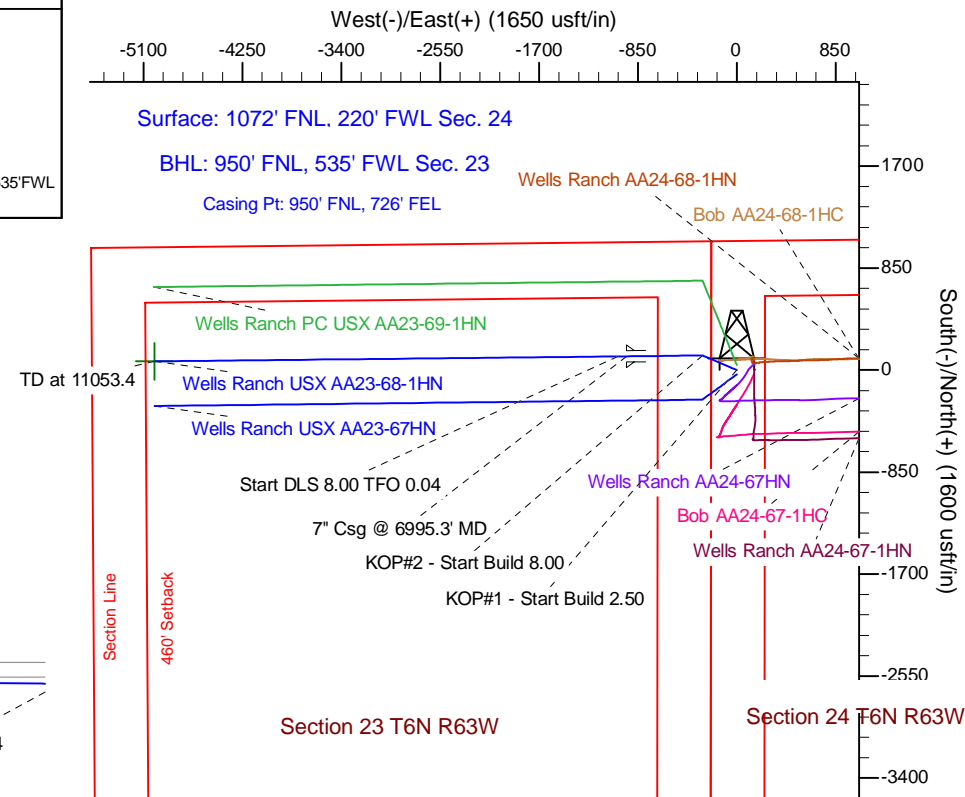
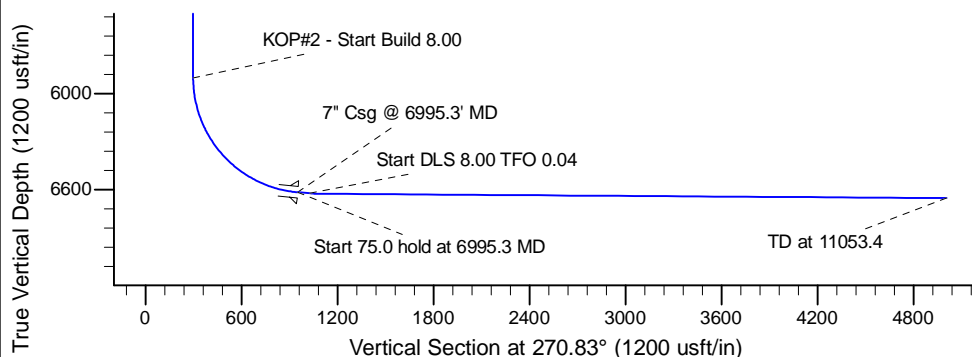
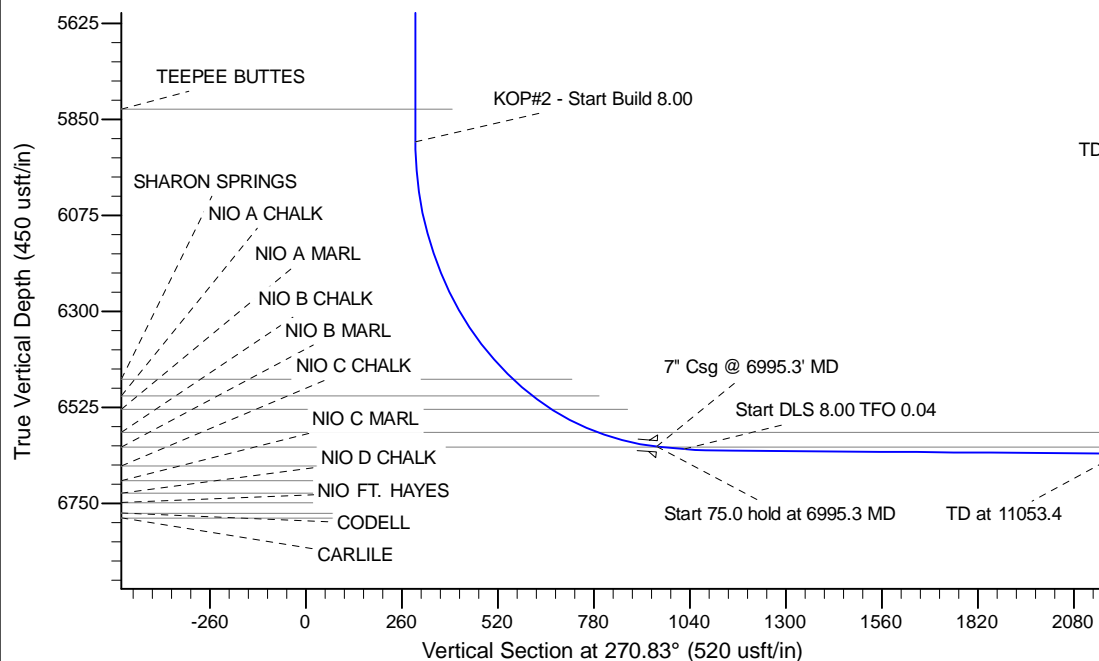
Project: Wattenberg Field
 Site: AA (Sec.24-T06N-R63W) Weld County, CO
 Well: Wells Ranch USX AA23-68-1HN
 Wellbore: Original Drilling
 Design: APD - Rev 0

Northern Region Drilling

Geodetic System: US State Plane 1983
 Datum: North American Datum 1983
 Ellipsoid: GRS 1980
 Zone: Colorado Northern Zone
 System Datum: Mean Sea Level

SECTION DETAILS

Sec	MD	Inc	Azi	TVD	+N/-S	+E/-W	Dleg	TFace	VSec	Target
1	0.0	0.00	0.00	0.0	0.0	0.0	0.00	0.00	0.0	
2	1800.0	0.00	0.00	1800.0	0.0	0.0	0.00	0.00	0.0	
3	2279.8	12.00	292.47	2276.3	19.1	-46.2	2.50	292.47	46.5	
4	3334.2	12.00	292.47	3307.7	102.9	-248.8	0.00	0.00	250.2	
5	3814.0	0.00	0.00	3784.0	122.0	-295.0	2.50	180.00	296.7	
6	5932.8	0.00	0.00	5902.8	122.0	-295.0	0.00	0.00	296.7	
7	6995.3	85.00	269.40	6616.3	115.2	-948.7	8.00	269.40	950.3	
8	7070.3	85.00	269.40	6622.8	114.4	-1023.5	0.00	0.00	1025.0	
9	7127.8	89.60	269.40	6625.5	113.8	-1080.9	8.00	0.04	1082.4	
10	11053.4	89.60	269.40	6653.0	72.9	-5006.2	0.00	0.00	5006.7	Wells Ranch USX AA23-68-1HN BHL 950'FNL, 535'FWL



WELL DETAILS: Wells Ranch USX AA23-68-1HN			
Ground Level:	4793.0	Latitude	40.476340
Northing	1418291.22	Easting	3307788.88
Longitude	-104.39360		
Plan: APD - Rev 0 (Wells Ranch USX AA23-68-1HN/Original Drilling)			
Created By: Carrie Willers	Date: 12:38, January 24 2013		
Checked: _____	Date: _____		
Reviewed: _____	Date: _____		
Approved: _____	Date: _____		