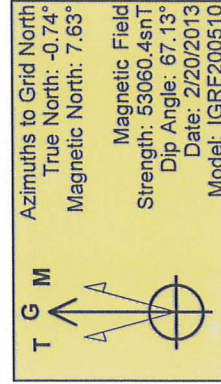
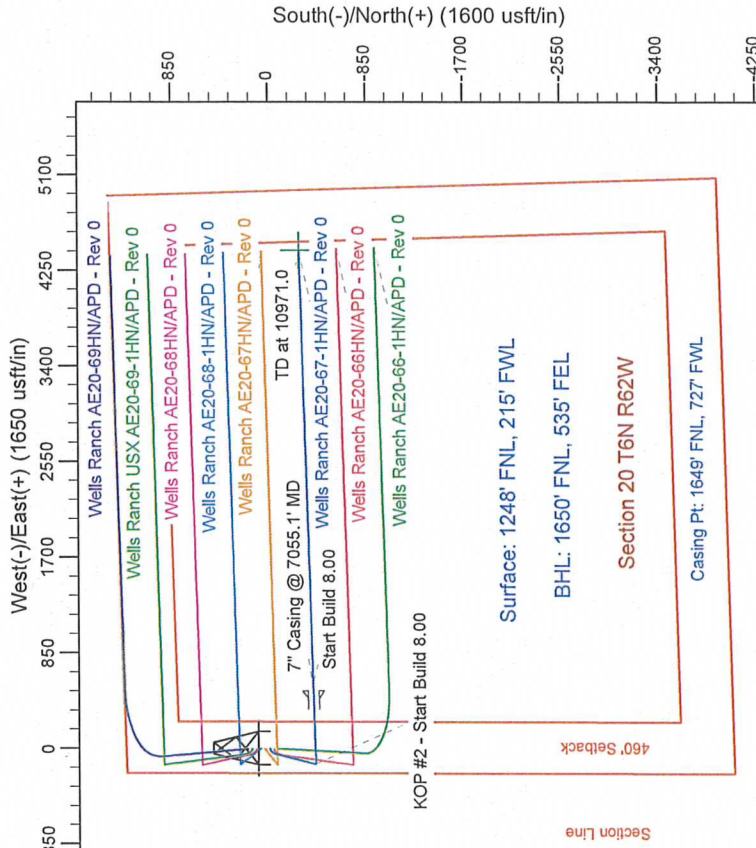
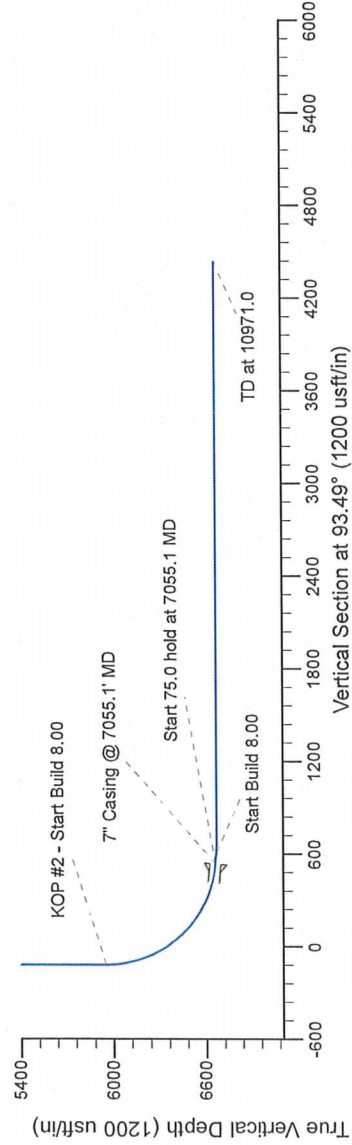
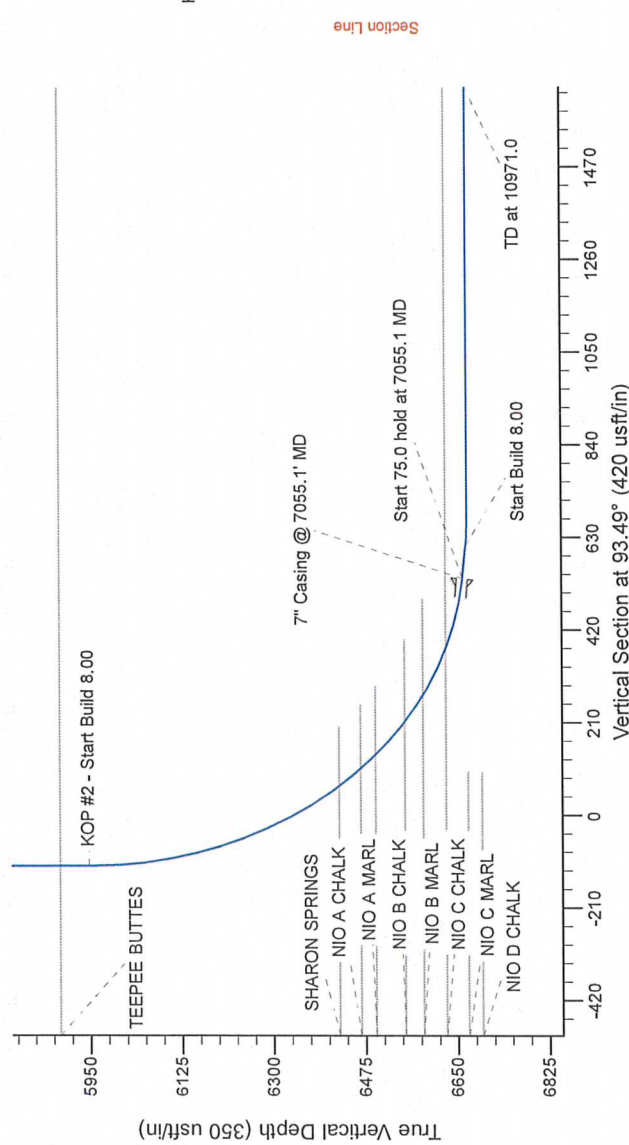


Project: Wattenberg Field
Site: AE (Sec.20-T06N-R62W) Weld County, CO
Well: Wells Ranch AE20-67-1HN
Wellbore: Original Drilling
Design: APD - Rev 0

Geodetic System: US State Plane 1983
 Datum: North American Datum 1983
 Ellipsoid: GRS 1980
 Zone: Colorado Northern Zone
 System Datum: Mean Sea Level

SECTION DETAILS										
Sec	MD	Inc	Azi	TVD	+N/Ls	+E/W	Dleg	TFace	Vsect	Target
1	0.00	0.00	0.00	0.0	0.0	0.0	0.00	0.00	0.0	
2	1500.0	0.00	0.00	1500.0	0.0	0.0	0.00	0.00	0.0	
3	1800.0	6.00	0.00	1799.5	-1.45	0.0	2.00	248.00	-14.2	
4	2372.2	13.94	194.23	2363.5	-5.9	-59.4	2.00	-78.33	-54.1	
5	3383.4	13.94	194.23	3344.9	-32.02	-119.3	2.00	0.00	-99.5	
6	4080.3	0.00	0.00	4035.0	-40.2	-140.0	2.00	180.00	-115.2	
7	5992.6	0.00	0.00	5947.3	-40.2	-140.0	0.00	0.00	-115.2	
8	7055.1	85.00	88.35	6650.7	-383.2	513.5	8.00	88.35	535.9	
9	7130.1	85.00	88.35	6657.3	-381.0	588.2	0.00	0.00	610.3	
10	7192.6	90.00	88.35	6670.0	-379.2	650.6	8.00	0.00	672.5	
11	10571.0	90.00	88.35	6670.0	-270.3	4427.4	0.00	0.00	4435.7	
										Wells Ranch AE20-67-1HN BHL 1650FNL, 535FEL



WELL DETAILS: Wells Ranch AE20-67-1HN			
Northing	Ground Level:	4841.0	Longitude
1418335.79	Easting	Latitude	-104.355190
	3318474.73	40.476090	
Plan: APD - Rev 0 (Wells Ranch AE20-67-1HN/Original Drilling)			
Created By: Carrie Willers		Date: 16:12, March 01 2013	
Checked:	_____	Date:	_____
Reviewed:	_____	Date:	_____
Approved:	_____	Date:	_____