

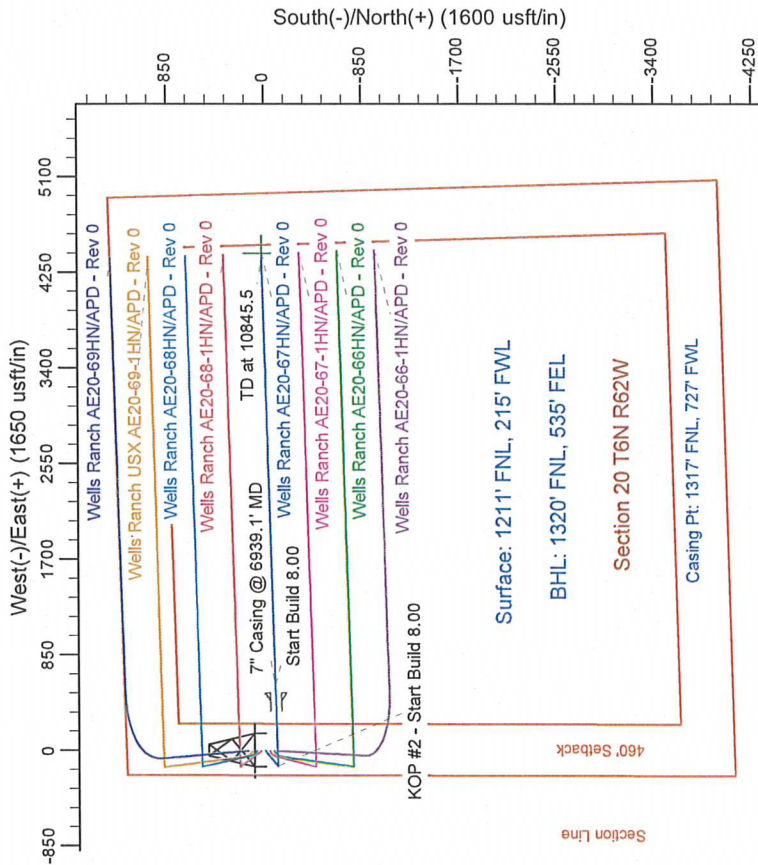
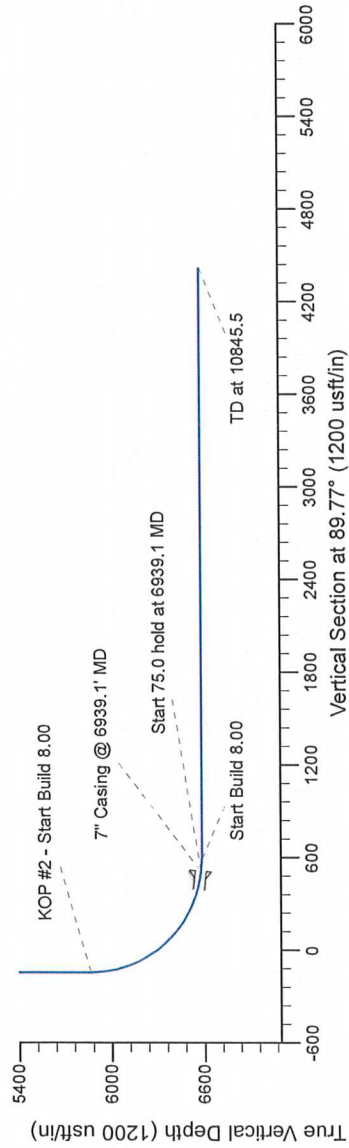
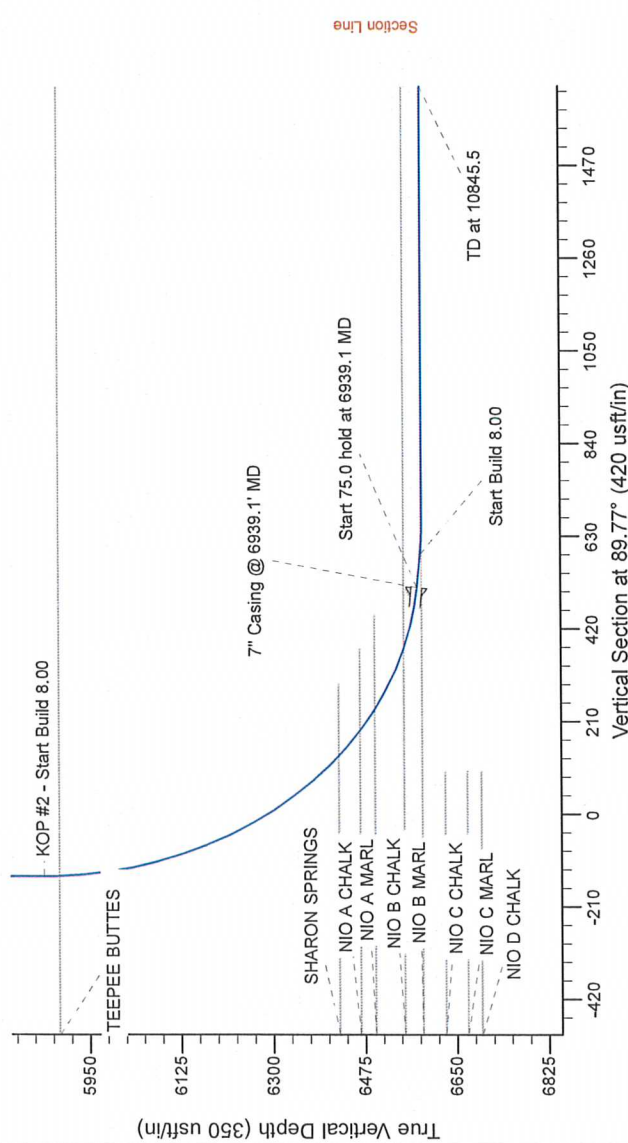
Project: Wattenberg Field
Site: AE (Sec.20-T6N-R62W) Weld County, CO
Well: Wells Ranch AE20-67HN
Wellbore: Original Drilling
Design: APD - Rev 0

Northern Region Drilling

Geodetic System: US State Plane 1983
Datum: North American Datum 1983
Ellipsoid: GRS 1980
Zone: Colorado Northern Zone
System Datum: Mean Sea Level

SECTION DETAILS

Sec	MD	Inc	Azi	TVD	+N/S	+E/W	Dleg	TFace	VSecl	Target
1	0.0	0.00	0.00	0.0	0.0	0.0	0.00	0.00	0.0	0.0
2	2000.0	0.00	0.00	2000.0	0.0	0.0	0.00	0.00	0.0	0.0
3	2604.7	12.09	232.10	2600.2	-39.1	-50.2	0.00	232.10	-50.3	-50.3
4	2844.6	12.09	232.10	2834.8	-69.9	-89.8	0.00	0.00	-90.1	-90.1
5	3449.3	0.00	0.00	3435.0	-109.0	-140.0	0.00	180.00	-140.4	-140.4
6	5876.6	0.00	0.00	5862.3	-109.0	-140.0	0.00	0.00	-140.4	-140.4
7	6939.1	85.00	88.41	6575.7	-90.9	513.5	8.00	88.41	513.2	513.2
8	7014.1	85.00	88.41	6582.3	-88.8	588.2	8.00	0.00	587.9	587.9
9	7076.6	90.00	88.41	6585.0	-87.1	650.6	8.00	0.00	650.3	650.3
10	10845.5	90.00	88.41	6585.0	17.4	4418.1	0.00	0.00	4418.1	4418.1



T G M

Azimuths to Grid North
True North: -0.74°
Magnetic North: 7.63°

Magnetic Field
Strength: 53060.5nT
Dip Angle: 67.13°
Date: 2/20/2013
Model: IGRF200510

WELL DETAILS: Wells Ranch AE20-67HN			
North	East	Ground Level	Longitude
1418375.86	3318474.21	4841.0	-104.355190
Plan: APD - Rev 0 (Wells Ranch AE20-67HN Original Drilling)			
Created By: Carrie Willers		Date: 16.56, March 01 2013	
Checked:		Date:	
Reviewed:		Date:	
Approved:		Date:	