

HALLIBURTON

WPX ENERGY ROCKY MOUNTAIN LLC-EBUS

**RG 543-36-198
SULPHUR CREEK
Rio Blanco County , Colorado**

Cement Multiple Stages

26-Oct-2012

Post Job Summary

The Road to Excellence Starts with Safety

Sold To #: 300721	Ship To #: 2958642	Quote #:	Sales Order #: 9901644
Customer: WPX ENERGY ROCKY MOUNTAIN LLC-EBUS	Customer Rep: Brunk, Andrew		
Well Name: RG	Well #: 543-36-198	API/UWI #: 05-103-11925	
Field: SULPHUR CREEK	City (SAP): MEEKER	County/Parish: Rio Blanco	State: Colorado
Lat: N 39.916 deg. OR N 39 deg. 54 min. 58.252 secs.	Long: W 108.34 deg. OR W -109 deg. 39 min. 37.033 secs.		
Contractor: CYCLONE 29	Rig/Platform Name/Num: CYCLONE 29		
Job Purpose: Cement Multiple Stages			
Well Type: Development Well	Job Type: Cement Multiple Stages		
Sales Person: MAYO, MARK	Srvc Supervisor: SLAUGHTER, JESSE	MBU ID Emp #: 454315	

Job Personnel

HES Emp Name	Exp Hrs	Emp #	HES Emp Name	Exp Hrs	Emp #	HES Emp Name	Exp Hrs	Emp #
BURKE, BRENDAN Patrick	13	487782	DOUT, JACOB J	13	430298	HYDE, DUSTIN C	13	453940
SLAUGHTER, JESSE Dean	13	454315						

Equipment

HES Unit #	Distance-1 way	HES Unit #	Distance-1 way	HES Unit #	Distance-1 way	HES Unit #	Distance-1 way
10297346	30 mile	10872429	30 mile	11071559	30 mile	11259881	30 mile
11808847	30 mile						

Job Hours

Date	On Location Hours	Operating Hours	Date	On Location Hours	Operating Hours	Date	On Location Hours	Operating Hours
10-26-2012	13	6						

TOTAL Total is the sum of each column separately

Job				Job Times			
Formation Name				Date	Time	Time Zone	
Formation Depth (MD)	Top	Bottom		Called Out	26 - Oct - 2012	00:00	MST
Form Type		BHST		On Location	26 - Oct - 2012	06:00	MST
Job depth MD	3650. ft	Job Depth TVD	3650. ft	Job Started	26 - Oct - 2012	13:06	MST
Water Depth		Wk Ht Above Floor	4. ft	Job Completed	26 - Oct - 2012	16:10	MST
Perforation Depth (MD)	From	To		Departed Loc	26 - Oct - 2012	19:00	MST

Well Data

Description	New / Used	Max pressure psig	Size in	ID in	Weight lbm/ft	Thread	Grade	Top MD ft	Bottom MD ft	Top TVD ft	Bottom TVD ft
-------------	------------	-------------------	---------	-------	---------------	--------	-------	-----------	--------------	------------	---------------

Tools and Accessories

Type	Size	Qty	Make	Depth	Type	Size	Qty	Make	Depth	Type	Size	Qty	Make
Guide Shoe					Packer					Top Plug			
Float Shoe					Bridge Plug					Bottom Plug			
Float Collar					Retainer					SSR plug set	9.625	1	WF
Insert Float										Plug Container	9.625	1	HES
Stage Tool										Centralizers			

Miscellaneous Materials

Gelling Agt		Conc		Surfactant		Conc		Acid Type		Qty		Conc	%
Treatment Fld		Conc		Inhibitor		Conc		Sand Type		Size		Qty	

Fluid Data

Stage/Plug #: 1													
Fluid #	Stage Type	Fluid Name	Qty	Qty uom	Mixing Density lbm/gal	Yield ft3/sk	Mix Fluid Gal/sk	Rate bbl/min	Total Mix Fluid Gal/sk				

Stage/Plug #: 1													
Fluid #	Stage Type	Fluid Name	Qty	Qty uom	Mixing Density lbm/gal	Yield ft3/sk	Mix Fluid Gal/sk	Rate bbl/min	Total Mix Fluid Gal/sk				

Stage/Plug #: 1									
1	Fresh Water Spacer	FRESH WATER	40.00	bbl	8.33	.0	.0	4	
2	1st Stage Lead Cement	VERSACEM (TM) SYSTEM (452010)	525.0	sacks	12.8	1.77	9.34	8	9.34
	0.25 lbm	POLY-E-FLAKE (101216940)							
	0.25 %	HR-5, 50 LB SK (100005050)							
	0.125 lbm	TUF FIBER 594, 15 LB BOX (101350514)							
	9.34 Gal	FRESH WATER							
3	1st Stage Tail Cement	VERSACEM (TM) SYSTEM (452010)	160.0	sacks	12.8	1.96	10.95	8	10.95
	10.95 Gal	FRESH WATER							
4	Displacement	FRESH WATER	281.9	bbl	8.33	.0	.0	10	
5	Fresh Water Spacer	FRESH WATER	2.0	bbl	8.33	.0	.0	4	
6	2nd Stage TAIL	VERSACEM (TM) SYSTEM (452010)	660.0	sacks	12.8	1.96	10.95	8	10.95
	10.95 Gal	FRESH WATER							
7	Displacement	FRESH WATER	122.00	bbl	8.33	.0	.0	10	
Calculated Values		Pressures		Volumes					
Displacement	281.9	Shut In: Instant		Lost Returns	NO	Cement Slurry	451	Pad	
Top Of Cement	SURFACE	5 Min		Cement Returns	35	Actual Displacement	281.9	Treatment	
Frac Gradient		15 Min		Spacers	42	Load and Breakdown		Total Job	916
Rates									
Circulating		Mixing	8	Displacement	10	Avg. Job	9		
Cement Left In Pipe	Amount	0 ft	Reason	Shoe Joint					
Frac Ring # 1 @	ID	Frac ring # 2 @	ID	Frac Ring # 3 @	ID	Frac Ring # 4 @	ID		
The Information Stated Herein Is Correct				Customer Representative Signature					

The Road to Excellence Starts with Safety

Sold To #: 300721	Ship To #: 2958642	Quote #:	Sales Order #: 9901644
Customer: WPX ENERGY ROCKY MOUNTAIN LLC-EBUS	Customer Rep: Brunk, Andrew		
Well Name: RG	Well #: 543-36-198	API/UWI #: 05-103-11925	
Field: SULPHUR CREEK	City (SAP): MEEKER	County/Parish: Rio Blanco	State: Colorado
Legal Description:			
Lat: N 39.916 deg. OR N 39 deg. 54 min. 58.252 secs.		Long: W 108.34 deg. OR W -109 deg. 39 min. 37.033 secs.	
Contractor: CYCLONE 29	Rig/Platform Name/Num: CYCLONE 29		
Job Purpose: Cement Multiple Stages			Ticket Amount:
Well Type: Development Well	Job Type: Cement Multiple Stages		
Sales Person: MAYO, MARK	Srv Supervisor: SLAUGHTER, JESSE	MBU ID Emp #: 454315	

Activity Description	Date/Time	Cht #	Rate bbl/min	Volume bbl		Pressure psig		Comments
				Stage	Total	Tubing	Casing	
Call Out	10/26/2012 01:19							TD 3680 FT, TP 3674 FT, SHOE 26.62 FT, MSC TOOL SET AT 1580 FT, CSG 9 5/8 IN 36 LB/FT, HOLE 14 3/4 IN TO 1540 FT 13 1/2 IN FROM 1540 FT TO TD, MUD WT 9.8 PPG
Pre-Convoy Safety Meeting	10/26/2012 03:20							WITH ALL HES PERSONNEL
Crew Leave Yard	10/26/2012 03:30							
Arrive At Loc	10/26/2012 06:00							RIG WAS PULLING PIPE UPON HES ARRIVAL
Assessment Of Location Safety Meeting	10/26/2012 10:30							WITH ALL HES PERSONNEL
Other	10/26/2012 10:40							SPOT EQUIPMENT
Pre-Rig Up Safety Meeting	10/26/2012 10:50							WITH ALL HES PERSONNEL
Rig-Up Equipment	10/26/2012 11:00							MSC TOOL AND PLUG SET PROVIDED BY WEATHERFORD. NO WEATHERFORD PERSONEL ON LOCATION, HES RAN PLUG SET
Pre-Job Safety Meeting	10/26/2012 12:50							WITH ALL PERSONNEL ON LOCATION
Start Job	10/26/2012 13:06							
Other	10/26/2012 13:06		2	2			85.0	PRIME LINES WITH FRESH WATER
Activity Description	Date/Time	Cht	Rate bbl/min	Volume bbl		Pressure psig		Comments

Sold To #: 300721

Ship To #: 2958642

Quote #:

Sales Order #:

9901644

SUMMIT Version: 7.3.0045

Saturday, November 03, 2012 12:43:00

		#		Stage	Total	Tubing	Casing	
Test Lines	10/26/2012 13:08							TESTED LINES TO 4106 PSI PRESSURE HOLDING
Pump Spacer	10/26/2012 13:14		4	40			137.0	FRESH WATER
Pump Lead Cement	10/26/2012 13:29		8	165.5			540.0	525 SKS AT 12.8 PPG, 1.77 FT3/SK, 9.34 GAL/SK. HES PUT 45 LB TUFF FIBER IN FIRST 100 BBL OF LEAD CEMENT AS PER COMPANY REP.
Pump Tail Cement	10/26/2012 13:57			55.8				160 SKS AT 12.8 PPG, 1.96 FT3/SK, 10.95 GAL/SK. AT THE END OF TAIL CEMENT DENSITY DROPPED DUE TO OPERATOR SUCKED TUB DRY
Shutdown	10/26/2012 14:04							
Drop Plug	10/26/2012 14:08							DROP WIPER DART. PLUG LAUNCHED
Pump Displacement	10/26/2012 14:10		10	102			500.0	FRESH WATER
Slow Rate	10/26/2012 14:22		4	30			85.0	SLOWED RATE FOR PLUG TO PASS THROUGH MSC TOOL
Resume	10/26/2012 14:29		10	132			1070. 0	RESUME RATE
Slow Rate	10/26/2012 14:43		4	271.9			670.0	SLOWED RATE 10 BBL PRIOR TO CALCULATED DISPLACEMENT
Bump Plug	10/26/2012 14:45		4	10			1150. 0	PLUG BUMPED
Check Floats	10/26/2012 14:46				281.9			FLOATS HOLDING. HES RETURNED 1 BBL H2O TO PUMP
Drop Opening Device For Multiple Stage Cementer	10/26/2012 14:50							DROPPED BOMB WAITED 10 MINUTES
Open Multiple Stage Cementer	10/26/2012 15:02						700.0	MSC TOOL PRESSURED UP TO 700 PSI MSC TOOL OPENED
Pump Spacer	10/26/2012 15:02		4	2			180.0	FRESH WATER
Activity Description	Date/Time	Cht #	Rate bbl/ min	Volume bbl Stage Total		Pressure psig Tubing Casing		Comments

Cementing Job Log

Pump Tail Cement	10/26/2012 15:04		8	230.4			550.0	660 SKS AT 12.8 PPG, 1.96 FT ³ /SK, 10.95 GAL/SK. HES PUT 30 LB TUFF FIBER IN LAST 100 BBL OF TAIL CEMENT. AT 84 BBL AWAY SLOWED TO 4 BPM DUE TO INSUFICIENT WATER DELIVERY, RESUMED RATE AT 90 BBL AWAY. AT 100 BBL AWAY SLOWED RATE DUE TO CEMENT RETURN
Other	10/26/2012 15:05							HES RETURNED 25 BBL CEMENT TO SURFACE.
Shutdown	10/26/2012 15:46							
Drop Plug	10/26/2012 15:48							DROPPED MSC CLOSING DEVICE
Pump Displacement	10/26/2012 15:50		10	112			745.0	FRESH WATER
Slow Rate	10/26/2012 16:04		4	10			350.0	SLOWED RATE 10 BBL PRIOR TO CALCULATED DISPLACEMENT.
Bump Plug	10/26/2012 16:06		4		122		1700.0	PLUG BUMPED
Close Multiple Stage Cementer	10/26/2012 16:06							MSC TOOL CLOSED 1200 PSI OVER FINAL LIFT PRESSURE. HES RETURNED 10 BBL CEMENT TO SURFACE
Release Casing Pressure	10/26/2012 16:09							RELEASE CASING PRESSURE. HES RETURNED 1 BBL H2O TO PUMP
End Job	10/26/2012 16:10							PIPE WAS STATIC DURING JOB, GOOD CIRCULATION THROUGHOUT JOB. 35 BBL TOTAL CEMENT RETURNED TO SURFACE. HES USED 40 LB SUGAR FOR JOB. HES DID NOT USE BOOSTER TRAILER.
Pre-Rig Down Safety Meeting	10/26/2012 16:15							WITH ALL HES PERSONNEL

HALLIBURTON***Cementing Job Log***

Activity Description	Date/Time	Cht #	Rate bbl/ min	Volume bbl		Pressure psig		Comments
				Stage	Total	Tubing	Casing	
Rig-Down Equipment	10/26/2012 16:20							
Pre-Convoy Safety Meeting	10/26/2012 18:50							WITH ALL HES PERSONNEL
Crew Leave Location	10/26/2012 19:00							
Comment	10/26/2012 19:01							THANK YOU FOR USING HALLIBURTON CEMENT DEPARTMENT JESSE SLAUGHTER AND CREW

Sold To # : 300721

Ship To # :2958642

Quote # :

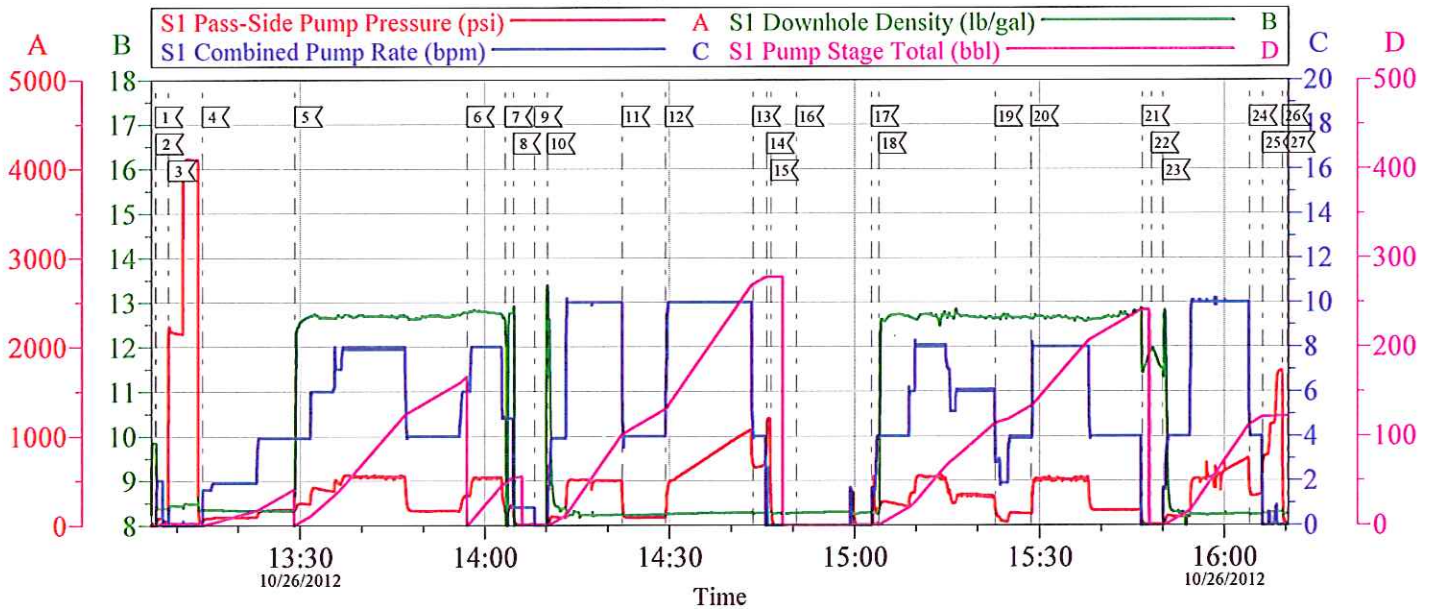
Sales Order # :

9901644

SUMMIT Version: 7.3.0045

Saturday, November 03, 2012 12:43:00

WPX RG 543-36-198 9 5/8 2-STAGE SURFACE



Local Event Log

1 START JOB	13:06:30	2 PRIME LINES	13:06:37	3 TEST LINES	13:08:38
4 PUMP H2O SPACER	13:14:07	5 PUMP LEAD CEMENT	13:29:12	6 PUMP TAIL CEMENT	13:57:06
7 SUCKED TUB DRY	14:03:23	8 SHUTDOWN	14:04:40	9 DROP WIPER DART	14:08:08
10 PUMP DISPLACEMENT	14:10:16	11 SLOW RATE FOR MSC TOOL	14:22:19	12 RESUME RATE	14:29:24
13 SLOW RATE	14:43:32	14 BUMP PLUG	14:45:47	15 CHECK FLOATS	14:46:27
16 DROP MSC OPENING DEVICE	14:50:35	17 OPEN MSC TOOL	15:02:48	18 PUMP CEMENT	15:04:00
19 SLOW RATE FOR RIG PUMP	15:22:53	20 RESUME RATE	15:28:39	21 SHUTDOWN	15:46:39
22 DROP CLOSING DEVICE	15:48:09	23 PUMP DISPLACEMENT	15:50:00	24 SLOW RATE	16:04:08
25 BUMP PLUG/CLOSE MSC TOOL	16:06:18	26 CHECK MSC TOOL	16:09:29	27 END JOB	16:10:20

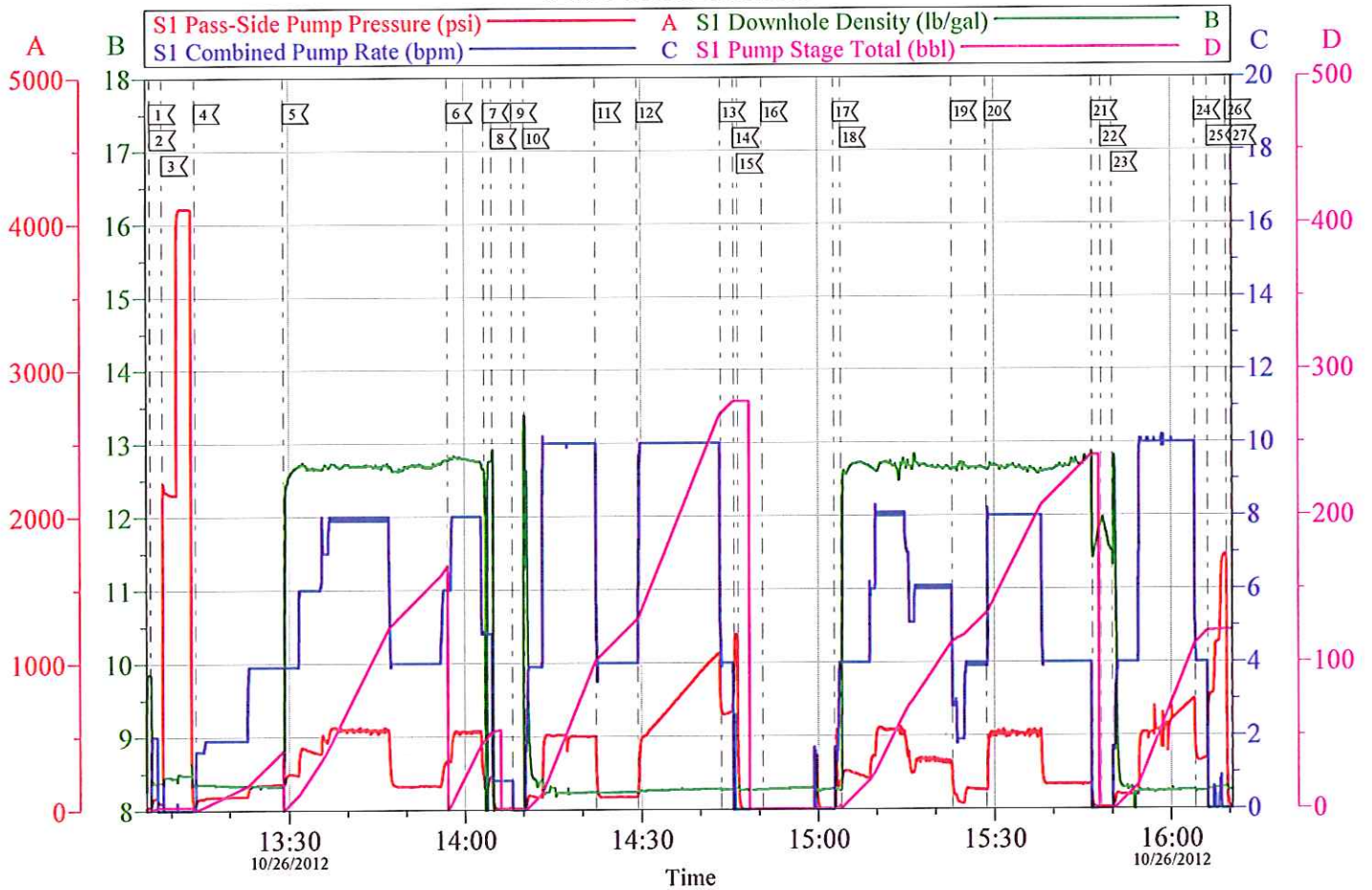
Customer: WPX
Well Description: RG 543-36-198
Customer Rep: ANDREW BRUNK

Job Date: 26-Oct-2012
Job Type: SURFACE
Cement Supervisor: JESSE SLAUGHTER

Sales Order #: 9901644
ADC Used: YES
Elite #7: DUSTIN HYDE

OptiCem v6.4.10
26-Oct-12 16:23

WPX RG 543-36-198
9 5/8 2-STAGE SURFACE



Customer: WPX	Job Date: 26-Oct-2012	Sales Order #: 9901644
Well Description: RG 543-36-198	Job Type: SURFACE	ADC Used: YES
Customer Rep: ANDREW BRUNK	Cement Supervisor: JESSE SLAUGHTER	Elite #7: DUSTIN HYDE

OptiCem v6.4.10
26-Oct-12 16:23