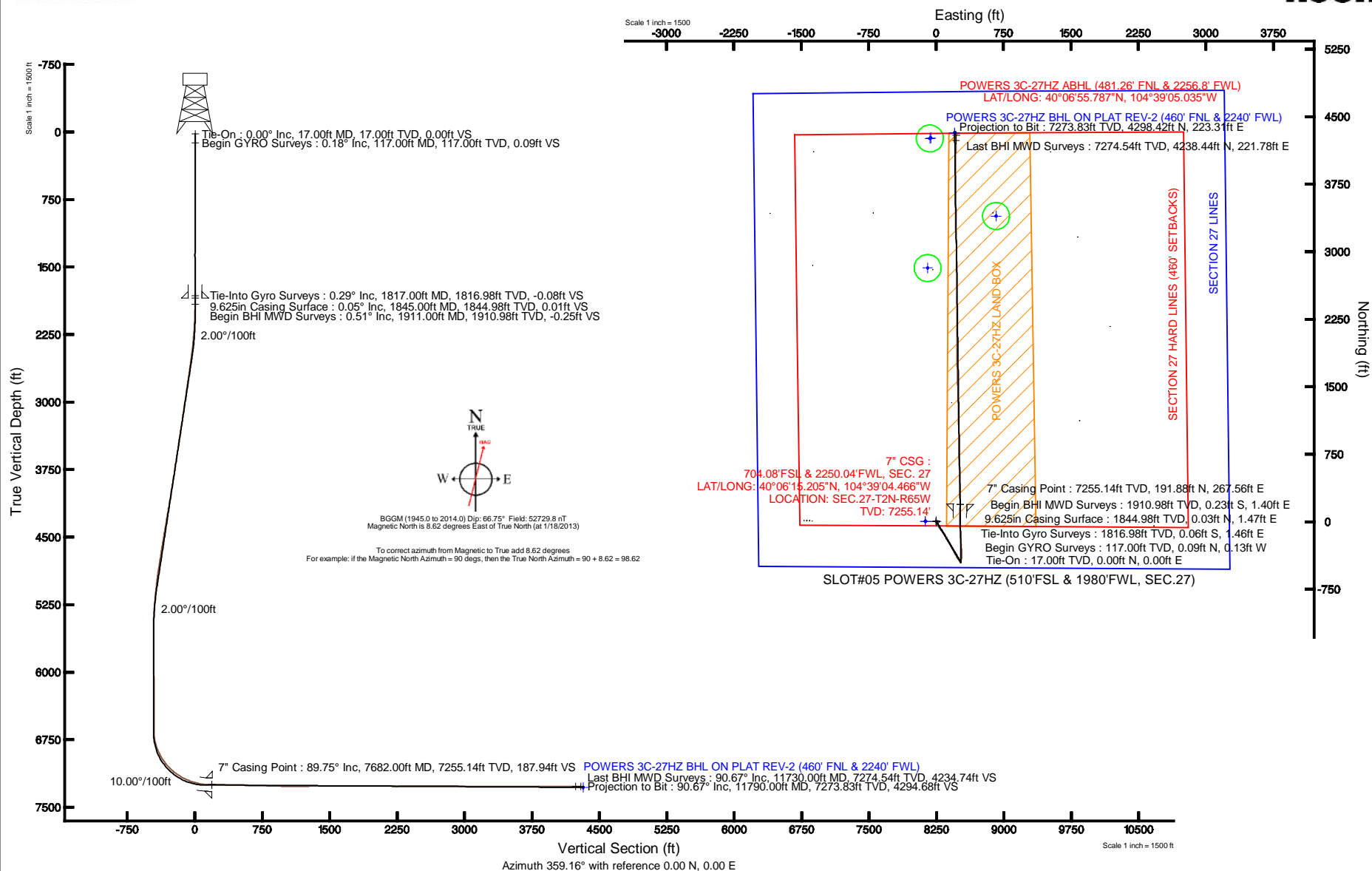


KERR-MCGEE OIL & GAS ONSHORE LP

Location:	COLORADO	Slot:	SLOT#05 POWERS 3C-27HZ (510'FSL & 1980'FWL, SEC.27)
Field:	WELD COUNTY (KERR MCGEE)	Well:	POWERS 3C-27HZ
Facility:	SEC.27-T2N-R65W	Wellbore:	POWERS 3C-27HZ PWB

Plot reference wellpath is POWERS 3C-27HZ (REV-B.0) PWP

True vertical depths are referenced to XTREME 6 (RKB)	Grid System: NAD83 / Lambert Colorado SP, Northern Zone (501), US feet
Measured depths are referenced to XTREME 6 (RKB)	North Reference: True north
XTREME 6 (RKB) to Mean Sea Level: 4967 feet	Scale: True distance
Mean Sea Level to Mud line (At Slot: SLOTH#05 POWERS 3C-27HZ (510 FSL & 1980 FWL, SEC.27): 0 feet	Depths are in feet
Coordinates are in feet referenced to SLOT	Created by: precain on 3/28/2013





Actual Wellpath Report

POWERS 3C-27HZ AWP

Page 1 of 7



REFERENCE WELLPATH IDENTIFICATION			
Operator	KERR-MCGEE OIL & GAS ONSHORE LP	Slot	SLOT#05 POWERS 3C-27HZ (510'FSL & 1980'FWL, SEC.27)
Area	COLORADO	Well	POWERS 3C-27HZ
Field	WELD COUNTY (KERR MCGEE)	Wellbore	POWERS 3C-27HZ AWB
Facility	SEC.27-T2N-R65W		

REPORT SETUP INFORMATION			
Projection System	NAD83 / Lambert Colorado SP, Northern Zone (501), US feet	Software System	WellArchitect® 3.0.2
North Reference	True	User	Precain
Scale	0.99996	Report Generated	3/28/2013 at 10:00:10 AM
Convergence at slot	0.55° East	Database/Source file	WellArchitectDB/POWERS_3C-27HZ_AWB.xml

WELLPATH LOCATION						
	Local coordinates		Grid coordinates		Geographic coordinates	
	North[ft]	East[ft]	Easting[US ft]	Northing[US ft]	Latitude	Longitude
Slot Location	-0.71	119.90	3237150.31	1281754.81	40°06'13.309"N	104°39'07.909"W
Facility Reference Pt			3237030.41	1281754.37	40°06'13.316"N	104°39'09.452"W
Field Reference Pt			3197771.84	1268891.29	40°04'09.600"N	104°47'36.000"W

WELLPATH DATUM			
Calculation method	Minimum curvature	XTREME 6 (RKB) to Facility Vertical Datum	4967.00ft
Horizontal Reference Pt	Slot	XTREME 6 (RKB) to Mean Sea Level	4967.00ft
Vertical Reference Pt	XTREME 6 (RKB)	XTREME 6 (RKB) to Mud Line at Slot (SLOT#05 POWERS 3C-27HZ (510'FSL & 1980'FWL, SEC.27))	4967.00ft
MD Reference Pt	XTREME 6 (RKB)	Section Origin	N 0.00, E 0.00 ft
Field Vertical Reference	Mean Sea Level	Section Azimuth	359.16°



Actual Wellpath Report

POWERS 3C-27HZ AWP

Page 2 of 7



REFERENCE WELLPATH IDENTIFICATION

Operator	KERR-MCGEE OIL & GAS ONSHORE LP	Slot	SLOT#05 POWERS 3C-27HZ (510'FSL & 1980'FWL, SEC.27)
Area	COLORADO	Well	POWERS 3C-27HZ
Field	WELD COUNTY (KERR MCGEE)	Wellbore	POWERS 3C-27HZ AWB
Facility	SEC.27-T2N-R65W		

WELLPATH DATA (150 stations) † = interpolated/extrapolated station

MD [ft]	Inclination [°]	Azimuth [°]	TVD [ft]	Vert Sect [ft]	North [ft]	East [ft]	Latitude	Longitude	DLS [°/100ft]	Comments
0.00†	0.000	305.890	0.00	0.00	0.00	0.00	40°06'13.309"N	104°39'07.909"W	0.00	
17.00	0.000	305.890	17.00	0.00	0.00	0.00	40°06'13.309"N	104°39'07.909"W	0.00	Tie-On
117.00	0.180	305.890	117.00	0.09	0.09	-0.13	40°06'13.310"N	104°39'07.911"W	0.18	Begin GYRO Surveys
217.00	0.390	115.950	217.00	0.03	0.04	0.05	40°06'13.309"N	104°39'07.908"W	0.57	
317.00	0.480	84.990	317.00	-0.09	-0.08	0.77	40°06'13.308"N	104°39'07.899"W	0.25	
417.00	0.510	114.010	416.99	-0.25	-0.22	1.60	40°06'13.307"N	104°39'07.888"W	0.25	
517.00	0.260	313.440	516.99	-0.27	-0.25	1.84	40°06'13.307"N	104°39'07.885"W	0.76	
617.00	0.310	184.230	616.99	-0.38	-0.36	1.66	40°06'13.305"N	104°39'07.888"W	0.52	
717.00	0.360	93.450	716.99	-0.68	-0.65	1.95	40°06'13.303"N	104°39'07.884"W	0.48	
817.00	0.270	122.760	816.99	-0.83	-0.80	2.46	40°06'13.301"N	104°39'07.877"W	0.18	
917.00	0.180	100.910	916.99	-0.99	-0.95	2.81	40°06'13.300"N	104°39'07.873"W	0.12	
1017.00	0.210	147.130	1016.99	-1.18	-1.14	3.07	40°06'13.298"N	104°39'07.870"W	0.16	
1117.00	0.400	13.410	1116.99	-1.00	-0.95	3.25	40°06'13.300"N	104°39'07.867"W	0.57	
1217.00	0.190	145.050	1216.99	-0.80	-0.75	3.42	40°06'13.302"N	104°39'07.865"W	0.55	
1317.00	0.380	232.110	1316.99	-1.13	-1.09	3.26	40°06'13.298"N	104°39'07.867"W	0.42	
1417.00	0.510	289.610	1416.98	-1.18	-1.14	2.58	40°06'13.298"N	104°39'07.876"W	0.44	
1517.00	0.090	20.720	1516.98	-0.95	-0.92	2.18	40°06'13.300"N	104°39'07.881"W	0.52	
1617.00	0.130	322.650	1616.98	-0.79	-0.75	2.14	40°06'13.302"N	104°39'07.881"W	0.11	
1717.00	0.430	298.660	1716.98	-0.51	-0.48	1.75	40°06'13.304"N	104°39'07.887"W	0.32	
1817.00	0.290	10.410	1816.98	-0.08	-0.06	1.46	40°06'13.308"N	104°39'07.890"W	0.44	Tie-Into Gyro Surveys
1911.00	0.510	194.720	1910.98	-0.25	-0.23	1.40	40°06'13.307"N	104°39'07.891"W	0.85	Begin BHI MWD Surveys
1996.00	1.630	165.710	1995.96	-1.79	-1.76	1.60	40°06'13.292"N	104°39'07.888"W	1.42	
2082.00	2.790	155.030	2081.90	-4.89	-4.85	2.79	40°06'13.261"N	104°39'07.873"W	1.43	
2166.00	4.000	158.160	2165.75	-9.49	-9.42	4.74	40°06'13.216"N	104°39'07.848"W	1.46	
2252.00	5.270	157.760	2251.46	-15.97	-15.86	7.35	40°06'13.152"N	104°39'07.814"W	1.48	
2337.00	6.240	147.920	2336.04	-23.55	-23.39	11.28	40°06'13.078"N	104°39'07.764"W	1.62	
2422.00	7.110	151.450	2420.46	-32.16	-31.92	16.25	40°06'12.994"N	104°39'07.700"W	1.13	
2507.00	8.080	152.260	2504.71	-42.14	-41.83	21.54	40°06'12.896"N	104°39'07.632"W	1.15	
2592.00	9.160	152.280	2588.75	-53.50	-53.11	27.47	40°06'12.784"N	104°39'07.555"W	1.27	
2677.00	10.250	145.780	2672.54	-65.85	-65.35	34.87	40°06'12.663"N	104°39'07.460"W	1.82	
2762.00	9.820	145.140	2756.24	-78.18	-77.55	43.27	40°06'12.543"N	104°39'07.352"W	0.52	
2848.00	10.460	143.280	2840.89	-90.58	-89.83	52.13	40°06'12.421"N	104°39'07.238"W	0.84	
2933.00	10.080	139.920	2924.53	-102.59	-101.70	61.53	40°06'12.304"N	104°39'07.117"W	0.83	
3018.00	10.290	142.770	3008.19	-114.47	-113.44	70.91	40°06'12.188"N	104°39'06.996"W	0.64	
3103.00	10.100	143.940	3091.85	-126.67	-125.51	79.89	40°06'12.069"N	104°39'06.881"W	0.33	
3188.00	9.740	144.010	3175.58	-138.63	-137.35	88.51	40°06'11.952"N	104°39'06.770"W	0.42	
3273.00	10.420	149.140	3259.27	-151.17	-149.77	96.67	40°06'11.829"N	104°39'06.665"W	1.32	
3358.00	10.030	149.740	3342.92	-164.27	-162.76	104.35	40°06'11.701"N	104°39'06.566"W	0.48	
3443.00	9.620	148.890	3426.67	-176.85	-175.23	111.75	40°06'11.577"N	104°39'06.471"W	0.51	
3528.00	9.910	148.240	3510.44	-189.26	-187.53	119.27	40°06'11.456"N	104°39'06.374"W	0.36	
3613.00	10.220	151.060	3594.13	-202.19	-200.35	126.76	40°06'11.329"N	104°39'06.278"W	0.68	
3698.00	9.160	149.010	3677.92	-214.69	-212.75	133.90	40°06'11.207"N	104°39'06.186"W	1.31	
3784.00	9.740	150.220	3762.75	-226.98	-224.93	141.03	40°06'11.086"N	104°39'06.094"W	0.71	
3869.00	10.330	153.240	3846.45	-240.12	-237.98	148.04	40°06'10.957"N	104°39'06.004"W	0.93	
3954.00	11.240	152.080	3929.95	-254.36	-252.10	155.35	40°06'10.818"N	104°39'05.910"W	1.10	



Actual Wellpath Report

POWERS 3C-27HZ AWP

Page 3 of 7



REFERENCE WELLPATH IDENTIFICATION

Operator	KERR-MCGEE OIL & GAS ONSHORE LP	Slot	SLOT#05 POWERS 3C-27HZ (510'FSL & 1980'FWL, SEC.27)
Area	COLORADO	Well	POWERS 3C-27HZ
Field	WELD COUNTY (KERR MCGEE)	Wellbore	POWERS 3C-27HZ AWB
Facility	SEC.27-T2N-R65W		

WELLPATH DATA (150 stations)

MD [ft]	Inclination [°]	Azimuth [°]	TVD [ft]	Vert Sect [ft]	North [ft]	East [ft]	Latitude	Longitude	DLS [°/100ft]	Comments
4039.00	10.770	150.270	4013.39	-268.68	-266.32	163.17	40°06'10.677"N	104°39'05.809"W	0.69	
4124.00	10.190	149.610	4096.97	-282.18	-279.70	170.91	40°06'10.545"N	104°39'05.710"W	0.70	
4208.00	11.250	155.610	4179.50	-296.16	-293.58	178.05	40°06'10.408"N	104°39'05.618"W	1.83	
4293.00	10.630	153.190	4262.96	-310.80	-308.13	185.01	40°06'10.264"N	104°39'05.528"W	0.91	
4378.00	9.920	153.280	4346.60	-324.44	-321.66	191.84	40°06'10.130"N	104°39'05.440"W	0.84	
4463.00	10.830	151.720	4430.20	-338.11	-335.23	198.91	40°06'09.996"N	104°39'05.349"W	1.12	
4549.00	10.820	151.300	4514.67	-352.42	-349.43	206.62	40°06'09.856"N	104°39'05.250"W	0.09	
4634.00	10.390	151.370	4598.22	-366.26	-363.16	214.12	40°06'09.720"N	104°39'05.153"W	0.51	
4717.00	10.260	150.500	4679.88	-379.36	-376.16	221.35	40°06'09.592"N	104°39'05.060"W	0.24	
4803.00	10.020	151.470	4764.54	-392.71	-389.40	228.69	40°06'09.461"N	104°39'04.966"W	0.34	
4887.00	10.290	147.850	4847.22	-405.59	-402.17	236.18	40°06'09.335"N	104°39'04.870"W	0.82	
4972.00	9.600	144.980	4930.94	-417.94	-414.40	244.28	40°06'09.214"N	104°39'04.765"W	1.00	
5057.00	8.100	138.520	5014.93	-428.35	-424.69	252.32	40°06'09.112"N	104°39'04.662"W	2.11	
5143.00	7.430	141.290	5100.14	-437.34	-433.57	259.81	40°06'09.024"N	104°39'04.566"W	0.89	
5228.00	6.400	148.110	5184.52	-445.73	-441.88	265.75	40°06'08.942"N	104°39'04.489"W	1.55	
5313.00	5.200	146.500	5269.09	-453.03	-449.12	270.38	40°06'08.871"N	104°39'04.430"W	1.42	
5398.00	3.180	151.610	5353.86	-458.37	-454.41	273.62	40°06'08.818"N	104°39'04.388"W	2.41	
5483.00	1.970	143.490	5438.77	-461.65	-457.65	275.62	40°06'08.786"N	104°39'04.362"W	1.48	
5568.00	0.960	184.630	5523.74	-463.54	-459.54	276.43	40°06'08.768"N	104°39'04.352"W	1.64	
5651.00	0.410	314.150	5606.74	-464.02	-460.02	276.16	40°06'08.763"N	104°39'04.355"W	1.52	
5736.00	0.710	348.870	5691.73	-463.29	-459.30	275.84	40°06'08.770"N	104°39'04.359"W	0.52	
5821.00	0.560	346.510	5776.73	-462.37	-458.37	275.64	40°06'08.779"N	104°39'04.362"W	0.18	
5904.00	0.720	353.080	5859.72	-461.45	-457.46	275.48	40°06'08.788"N	104°39'04.364"W	0.21	
5989.00	0.730	330.730	5944.72	-460.45	-456.46	275.15	40°06'08.798"N	104°39'04.368"W	0.33	
6074.00	0.590	332.840	6029.71	-459.58	-455.60	274.69	40°06'08.807"N	104°39'04.374"W	0.17	
6159.00	0.690	304.810	6114.71	-458.89	-454.92	274.07	40°06'08.813"N	104°39'04.382"W	0.38	
6244.00	0.320	280.460	6199.70	-458.54	-454.58	273.41	40°06'08.817"N	104°39'04.390"W	0.49	
6329.00	0.390	290.280	6284.70	-458.39	-454.44	272.91	40°06'08.818"N	104°39'04.397"W	0.11	
6414.00	0.190	232.360	6369.70	-458.37	-454.42	272.53	40°06'08.818"N	104°39'04.402"W	0.39	
6499.00	0.450	280.370	6454.70	-458.39	-454.45	272.09	40°06'08.818"N	104°39'04.408"W	0.41	
6584.00	0.400	289.640	6539.70	-458.22	-454.29	271.48	40°06'08.820"N	104°39'04.415"W	0.10	
6664.00	0.300	243.500	6619.70	-458.21	-454.29	271.03	40°06'08.820"N	104°39'04.421"W	0.36	
6758.00	4.610	13.120	6713.60	-454.65	-450.72	271.67	40°06'08.855"N	104°39'04.413"W	5.11	
6800.00	9.830	20.260	6755.25	-449.67	-445.71	273.29	40°06'08.904"N	104°39'04.392"W	12.59	
6841.00	14.840	17.780	6795.29	-441.42	-437.42	276.11	40°06'08.986"N	104°39'04.356"W	12.28	
6883.00	20.220	16.180	6835.33	-429.37	-425.32	279.78	40°06'09.106"N	104°39'04.309"W	12.86	
6926.00	24.550	11.280	6875.08	-413.53	-409.41	283.60	40°06'09.263"N	104°39'04.259"W	10.96	
6968.00	27.220	5.230	6912.87	-395.44	-391.28	286.18	40°06'09.442"N	104°39'04.226"W	8.93	
7011.00	30.550	358.230	6950.53	-374.72	-370.56	286.74	40°06'09.647"N	104°39'04.219"W	11.03	
7054.00	34.480	356.250	6986.78	-351.63	-347.48	285.61	40°06'09.875"N	104°39'04.234"W	9.47	
7094.00	38.770	355.680	7018.88	-327.81	-323.68	283.92	40°06'10.110"N	104°39'04.255"W	10.76	
7137.00	42.350	354.500	7051.54	-299.92	-295.83	281.52	40°06'10.386"N	104°39'04.286"W	8.51	
7179.00	46.690	354.550	7081.48	-270.58	-266.52	278.71	40°06'10.675"N	104°39'04.322"W	10.33	
7222.00	50.100	354.640	7110.03	-238.53	-234.52	275.68	40°06'10.991"N	104°39'04.361"W	7.93	
7264.00	54.390	354.720	7135.74	-205.43	-201.46	272.60	40°06'11.318"N	104°39'04.401"W	10.22	



Actual Wellpath Report

POWERS 3C-27HZ AWP

Page 4 of 7



REFERENCE WELLPATH IDENTIFICATION

Operator	KERR-MCGEE OIL & GAS ONSHORE LP	Slot	SLOT#05 POWERS 3C-27HZ (510'FSL & 1980'FWL, SEC.27)
Area	COLORADO	Well	POWERS 3C-27HZ
Field	WELD COUNTY (KERR MCGEE)	Wellbore	POWERS 3C-27HZ AWB
Facility	SEC.27-T2N-R65W		

WELLPATH DATA (150 stations) † = interpolated/extrapolated station

MD [ft]	Inclination [°]	Azimuth [°]	TVD [ft]	Vert Sect [ft]	North [ft]	East [ft]	Latitude	Longitude	DLS [°/100ft]	Comments
7307.00	58.400	355.900	7159.53	-169.71	-165.77	269.68	40°06'11.671"N	104°39'04.438"W	9.60	
7349.00	63.020	357.540	7180.07	-133.12	-129.21	267.60	40°06'12.032"N	104°39'04.465"W	11.51	
7392.00	66.510	358.780	7198.40	-94.24	-90.34	266.36	40°06'12.416"N	104°39'04.481"W	8.52	
7434.00	70.450	359.030	7213.81	-55.18	-51.29	265.61	40°06'12.802"N	104°39'04.491"W	9.40	
7477.00	73.190	359.300	7227.22	-14.33	-10.44	265.02	40°06'13.206"N	104°39'04.498"W	6.40	
7519.00	77.200	359.700	7237.95	26.27	30.15	264.67	40°06'13.607"N	104°39'04.503"W	9.59	
7562.00	81.120	0.580	7246.04	68.49	72.38	264.77	40°06'14.024"N	104°39'04.502"W	9.34	
7604.00	84.410	1.110	7251.33	110.13	114.03	265.39	40°06'14.436"N	104°39'04.494"W	7.93	
7639.00	87.040	1.740	7253.93	145.00	148.92	266.25	40°06'14.781"N	104°39'04.483"W	7.73	
7682.00†	89.747	1.740	7255.14	187.94	191.88	267.56	40°06'15.205"N	104°39'04.466"W	6.30	7" Casing Point
7683.00	89.810	1.740	7255.14	188.94	192.88	267.59	40°06'15.215"N	104°39'04.465"W	6.30	
7733.00	90.700	0.310	7254.92	238.91	242.87	268.48	40°06'15.709"N	104°39'04.454"W	3.37	
7819.00	88.640	359.070	7255.42	324.90	328.86	268.02	40°06'16.559"N	104°39'04.460"W	2.80	
7904.00	88.610	358.710	7257.46	409.87	413.82	266.37	40°06'17.398"N	104°39'04.481"W	0.42	
7989.00	88.890	358.040	7259.31	494.84	498.77	263.96	40°06'18.238"N	104°39'04.512"W	0.85	
8074.00	89.380	357.630	7260.59	579.81	583.69	260.75	40°06'19.077"N	104°39'04.553"W	0.75	
8159.00	88.300	357.530	7262.31	664.76	668.60	257.16	40°06'19.916"N	104°39'04.599"W	1.28	
8244.00	88.180	358.400	7264.93	749.70	753.51	254.15	40°06'20.755"N	104°39'04.638"W	1.03	
8329.00	87.810	359.810	7267.90	834.64	838.44	252.82	40°06'21.595"N	104°39'04.655"W	1.71	
8415.00	88.760	359.510	7270.47	920.60	924.40	252.31	40°06'22.444"N	104°39'04.662"W	1.16	
8500.00	88.860	359.280	7272.24	1005.58	1009.38	251.41	40°06'23.284"N	104°39'04.673"W	0.30	
8585.00	89.560	358.870	7273.41	1090.57	1094.36	250.04	40°06'24.124"N	104°39'04.691"W	0.95	
8670.00	90.760	358.660	7273.17	1175.57	1179.33	248.21	40°06'24.963"N	104°39'04.715"W	1.43	
8755.00	91.230	358.840	7271.70	1260.55	1264.30	246.35	40°06'25.803"N	104°39'04.738"W	0.59	
8840.00	91.780	358.320	7269.46	1345.52	1349.25	244.25	40°06'26.642"N	104°39'04.766"W	0.89	
8925.00	90.180	358.650	7268.01	1430.50	1434.20	242.00	40°06'27.482"N	104°39'04.794"W	1.92	
9010.00	90.300	358.220	7267.65	1515.49	1519.17	239.68	40°06'28.322"N	104°39'04.824"W	0.53	
9095.00	89.350	358.540	7267.91	1600.48	1604.13	237.28	40°06'29.161"N	104°39'04.855"W	1.18	
9180.00	89.470	358.560	7268.79	1685.47	1689.10	235.13	40°06'30.001"N	104°39'04.883"W	0.14	
9266.00	90.150	359.650	7269.07	1771.47	1775.09	233.78	40°06'30.851"N	104°39'04.900"W	1.49	
9351.00	89.690	359.010	7269.19	1856.47	1860.08	232.79	40°06'31.691"N	104°39'04.913"W	0.93	
9436.00	88.790	0.030	7270.32	1941.46	1945.07	232.08	40°06'32.530"N	104°39'04.922"W	1.60	
9520.00	90.550	0.650	7270.80	2025.43	2029.06	232.58	40°06'33.360"N	104°39'04.916"W	2.22	
9605.00	90.210	0.290	7270.24	2110.41	2114.06	233.27	40°06'34.200"N	104°39'04.907"W	0.58	
9690.00	88.920	359.830	7270.89	2195.40	2199.05	233.36	40°06'35.040"N	104°39'04.906"W	1.61	
9775.00	90.730	0.320	7271.15	2280.38	2284.05	233.47	40°06'35.880"N	104°39'04.904"W	2.21	
9860.00	91.100	0.160	7269.79	2365.35	2369.04	233.83	40°06'36.720"N	104°39'04.900"W	0.47	
9945.00	91.320	0.100	7267.99	2450.32	2454.02	234.02	40°06'37.560"N	104°39'04.897"W	0.27	
10029.00	90.670	359.490	7266.54	2534.30	2538.00	233.72	40°06'38.390"N	104°39'04.901"W	1.06	
10114.00	89.750	359.300	7266.22	2619.30	2623.00	232.82	40°06'39.230"N	104°39'04.912"W	1.11	
10199.00	90.150	359.140	7266.30	2704.30	2707.99	231.67	40°06'40.070"N	104°39'04.927"W	0.51	
10284.00	87.800	359.200	7267.82	2789.28	2792.96	230.44	40°06'40.909"N	104°39'04.943"W	2.77	
10369.00	89.040	359.560	7270.16	2874.25	2877.92	229.52	40°06'41.749"N	104°39'04.955"W	1.52	
10454.00	88.540	359.210	7271.96	2959.23	2962.90	228.61	40°06'42.589"N	104°39'04.967"W	0.72	
10540.00	88.610	357.580	7274.10	3045.19	3048.83	226.20	40°06'43.438"N	104°39'04.998"W	1.90	



Actual Wellpath Report

POWERS 3C-27HZ AWP

Page 5 of 7



REFERENCE WELLPATH IDENTIFICATION			
Operator	KERR-MCGEE OIL & GAS ONSHORE LP	Slot	SLOT#05 POWERS 3C-27HZ (510'FSL & 1980'FWL, SEC.27)
Area	COLORADO	Well	POWERS 3C-27HZ
Field	WELD COUNTY (KERR MCGEE)	Wellbore	POWERS 3C-27HZ AWB
Facility	SEC.27-T2N-R65W		

WELLPATH DATA (150 stations)										
MD [ft]	Inclination [°]	Azimuth [°]	TVD [ft]	Vert Sect [ft]	North [ft]	East [ft]	Latitude	Longitude	DLS [°/100ft]	Comments
10625.00	90.180	357.980	7274.99	3130.16	3133.76	222.90	40°06'44.277"N	104°39'05.040"W	1.91	
10709.00	90.430	357.620	7274.55	3214.13	3217.70	219.68	40°06'45.107"N	104°39'05.082"W	0.52	
10794.00	90.270	359.250	7274.03	3299.12	3302.66	217.36	40°06'45.946"N	104°39'05.111"W	1.93	
10880.00	89.870	359.010	7273.92	3385.12	3388.65	216.05	40°06'46.796"N	104°39'05.128"W	0.54	
10963.00	90.520	359.060	7273.64	3468.12	3471.64	214.66	40°06'47.616"N	104°39'05.146"W	0.79	
11048.00	91.250	358.310	7272.33	3553.11	3556.61	212.71	40°06'48.456"N	104°39'05.171"W	1.23	
11133.00	89.600	0.290	7271.70	3638.10	3641.59	211.67	40°06'49.296"N	104°39'05.185"W	3.03	
11216.00	89.930	0.130	7272.04	3721.08	3724.59	211.97	40°06'50.116"N	104°39'05.181"W	0.44	
11301.00	88.920	1.040	7272.89	3806.05	3809.58	212.84	40°06'50.956"N	104°39'05.170"W	1.60	
11386.00	88.650	1.500	7274.69	3890.97	3894.54	214.72	40°06'51.795"N	104°39'05.145"W	0.63	
11471.00	89.440	0.730	7276.11	3975.91	3979.51	216.38	40°06'52.635"N	104°39'05.124"W	1.30	
11556.00	90.580	1.570	7276.09	4060.86	4064.49	218.08	40°06'53.475"N	104°39'05.102"W	1.67	
11641.00	90.400	0.920	7275.37	4145.80	4149.47	219.93	40°06'54.315"N	104°39'05.078"W	0.79	
11730.00	90.670	1.460	7274.54	4234.74	4238.44	221.78	40°06'55.194"N	104°39'05.054"W	0.68	Last BHI MWD Surveys
11790.00	90.670	1.460	7273.83	4294.68	4298.42	223.31	40°06'55.787"N	104°39'05.035"W	0.00	Projection to Bit

HOLE & CASING SECTIONS - Ref Wellbore: POWERS 3C-27HZ AWB Ref Wellpath: POWERS 3C-27HZ AWP									
String/Diameter	Start MD [ft]	End MD [ft]	Interval [ft]	Start TVD [ft]	End TVD [ft]	Start N/S [ft]	Start E/W [ft]	End N/S [ft]	End E/W [ft]
13.5in Open Hole	17.00	1845.00	1828.00	17.00	1844.98	0.00	0.00	0.03	1.47
9.625in Casing Surface	17.00	1845.00	1828.00	17.00	1844.98	0.00	0.00	0.03	1.47
8.75in Open Hole	1845.00	7683.00	5838.00	1844.98	7255.14	0.03	1.47	192.88	267.59
7in Casing Intermediate	17.00	7682.00	7665.00	17.00	7255.14	0.00	0.00	191.88	267.56
6.125in Open Hole	7682.00	11790.00	4108.00	7255.14	7273.83	191.88	267.56	4298.42	223.31



Actual Wellpath Report

POWERS 3C-27HZ AWP

Page 6 of 7



REFERENCE WELLPATH IDENTIFICATION			
Operator	KERR-MCGEE OIL & GAS ONSHORE LP	Slot	SLOT#05 POWERS 3C-27HZ (510'FSL & 1980'FWL, SEC.27)
Area	COLORADO	Well	POWERS 3C-27HZ
Field	WELD COUNTY (KERR MCGEE)	Wellbore	POWERS 3C-27HZ AWB
Facility	SEC.27-T2N-R65W		

TARGETS									
Name	MD [ft]	TVD [ft]	North [ft]	East [ft]	Grid East [US ft]	Grid North [US ft]	Latitude	Longitude	Shape
SECTION 27 LINES		1.00	0.71	-120.05	3237030.25	1281754.37	40°06'13.316"N	104°39'09.454"W	polygon
POWERS 22-27 150' CIRCLE		7075.00	2819.43	-95.02	3237028.34	1284573.09	40°06'41.171"N	104°39'09.132"W	circle
POWERS 21-27 150' CIRCLE FOR 3N-27HZ		7076.00	4266.69	-58.42	3237051.09	1286020.57	40°06'55.473"N	104°39'08.661"W	circle
ROBERT POWERS USX X 27-18 150' CIRCLE		7077.00	3398.36	667.79	3237785.54	1285159.26	40°06'46.892"N	104°38'59.314"W	circle
POWERS 3C-27HZ BHL ON PLAT REV-1 (460' FNL & 2240' FWL)		7274.00	4323.46	206.66	3237315.61	1286079.87	40°06'56.034"N	104°39'05.249"W	point
POWERS 3C-27HZ LAND BOX		7274.00	0.00	0.00	3237150.30	1281754.81	40°06'13.309"N	104°39'07.909"W	polygon
SECTION 27 HARD LINES (460' SETBACKS)		7274.00	0.71	-120.05	3237030.25	1281754.37	40°06'13.316"N	104°39'09.454"W	polygon
POWERS 21-27 150' CIRCLE FOR 3C-27HZ		7285.00	4260.11	-69.38	3237040.20	1286013.89	40°06'55.408"N	104°39'08.802"W	circle
POWERS 3C-27HZ BHL ON PLAT REV-2 (460' FNL & 2240' FWL)		7285.00	4323.46	206.66	3237315.61	1286079.87	40°06'56.034"N	104°39'05.249"W	point

WELLPATH COMPOSITION - Ref Wellbore: POWERS 3C-27HZ AWB Ref Wellpath: POWERS 3C-27HZ AWP				
Start MD [ft]	End MD [ft]	Positional Uncertainty Model	Log Name/Comment	Wellbore
17.00	1817.00	Generic gyro - continuous (Standard)	GYRODATA SURVEYS <117-1817>	POWERS 3C-27HZ AWB
1817.00	7683.00	NaviTrak (MagCorr)	BHI MWD 8 3/4" HOLE <1911-7683>	POWERS 3C-27HZ AWB
7683.00	11730.00	OnTrak (MagCorr)	BHI MWD 6 1/8" HOLE <7733-11730>	POWERS 3C-27HZ AWB
11730.00	11790.00	Blind Drilling (std)	Projection to bit	POWERS 3C-27HZ AWB



Actual Wellpath Report

POWERS 3C-27HZ AWP

Page 7 of 7



REFERENCE WELLPATH IDENTIFICATION

Operator	KERR-MCGEE OIL & GAS ONSHORE LP	Slot	SLOT#05 POWERS 3C-27HZ (510'FSL & 1980'FWL, SEC.27)
Area	COLORADO	Well	POWERS 3C-27HZ
Field	WELD COUNTY (KERR MCGEE)	Wellbore	POWERS 3C-27HZ AWB
Facility	SEC.27-T2N-R65W		

WELLPATH COMMENTS

MD [ft]	Inclination [°]	Azimuth [°]	TVD [ft]	Comment
17.00	0.000	305.890	17.00	Tie-On
117.00	0.180	305.890	117.00	Begin GYRO Surveys
1817.00	0.290	10.410	1816.98	Tie-Into Gyro Surveys
1911.00	0.510	194.720	1910.98	Begin BHI MWD Surveys
7682.00	89.747	1.740	7255.14	7" Casing Point
11730.00	90.670	1.460	7274.54	Last BHI MWD Surveys
11790.00	90.670	1.460	7273.83	Projection to Bit