

HALLIBURTON

WPX ENERGY ROCKY MOUNTAIN LLC-EBUS

**RGU 343-36-198
SULPHUR CREEK
Rio Blanco County , Colorado**

Cement Multiple Stages

28-Oct-2012

Post Job Report

The Road to Excellence Starts with Safety

Sold To #: 300721		Ship To #: 2959462		Quote #:		Sales Order #: 9911048	
Customer: WPX ENERGY ROCKY MOUNTAIN LLC-EBUS				Customer Rep: Brunk, Andrew			
Well Name: RGU			Well #: 343-36-198			API/UWI #:	
Field: SULPHUR CREEK		City (SAP): MEEKER		County/Parish: Rio Blanco		State: Colorado	
Lat: N 39.916 deg. OR N 39 deg. 54 min. 58.338 secs.				Long: W 108.34 deg. OR W -109 deg. 39 min. 36.972 secs.			
Contractor: CYCLONE 29			Rig/Platform Name/Num: CYCLONE 29				
Job Purpose: Cement Multiple Stages							
Well Type: Development Well			Job Type: Cement Multiple Stages				
Sales Person: MAYO, MARK			Srv Supervisor: DEUSSEN, EDWARD			MBU ID Emp #: 485182	

Job Personnel

HES Emp Name	Exp Hrs	Emp #	HES Emp Name	Exp Hrs	Emp #	HES Emp Name	Exp Hrs	Emp #
BANKS, BRENT A	7.5	371353	DEUSSEN, EDWARD Eric	7.5	485182	LINN, PAUL Andrew	7.5	479143
MCKAY, PATRICK Joseph	5	496671						

Equipment

HES Unit #	Distance-1 way	HES Unit #	Distance-1 way	HES Unit #	Distance-1 way	HES Unit #	Distance-1 way
10565341	30 mile	10713212	30 mile	10872429	30 mile	10973571	30 mile
11259886	30 mile	11360871	30 mile	11808847	30 mile	4902	30 mile
4905	30 mile						

Job Hours

Date	On Location Hours	Operating Hours	Date	On Location Hours	Operating Hours	Date	On Location Hours	Operating Hours
10/28/12	7.5	6.5						

TOTAL Total is the sum of each column separately

Job				Job Times			
Formation Name				Date	Time	Time Zone	
Formation Depth (MD)	Top	Bottom		Called Out	28 - Oct - 2012	04:30	MST
Form Type		BHST		On Location	28 - Oct - 2012	11:00	MST
Job depth MD	3736. ft	Job Depth TVD	3736. ft	Job Started	28 - Oct - 2012	14:26	MST
Water Depth		Wk Ht Above Floor	5. ft	Job Completed	28 - Oct - 2012	17:08	MST
Perforation Depth (MD)	From	To		Departed Loc	28 - Oct - 2012	18:30	MST

Well Data

Description	New / Used	Max pressure psig	Size in	ID in	Weight lbm/ft	Thread	Grade	Top MD ft	Bottom MD ft	Top TVD ft	Bottom TVD ft
OPEN HOLE				13.5				1550.	3740.		
OPEN HOLE				14.75				.	1550.		
SURFACE CASING	Unknown		9.625	8.921	36.		J-55	.	3736.		

Tools and Accessories

Type	Size	Qty	Make	Depth	Type	Size	Qty	Make	Depth	Type	Size	Qty	Make
Guide Shoe					Packer					Top Plug			
Float Shoe					Bridge Plug					Bottom Plug			
Float Collar					Retainer					SSR plug set			
Insert Float										Plug Container			
Stage Tool										Centralizers			

Miscellaneous Materials

Gelling Agt		Conc		Surfactant		Conc		Acid Type		Qty		Conc	%
Treatment Fld		Conc		Inhibitor		Conc		Sand Type		Size		Qty	

Fluid Data

Stage/Plug #: 1

Cementing Job Summary

Fluid #	Stage Type	Fluid Name	Qty	Qty uom	Mixing Density lbm/gal	Yield ft ³ /sk	Mix Fluid Gal/sk	Rate bbl/min	Total Mix Fluid Gal/sk
1	Fresh Water Spacer		40.00	bbl	8.33	.0	.0	6.0	
2	1st Stage Lead Cement	VERSACEM (TM) SYSTEM (452010)	535.0	sacks	12.8	1.77	9.34	8.0	9.34
	0.25 lbm	POLY-E-FLAKE (101216940)							
	0.25 %	HR-5, 50 LB SK (100005050)							
	0.125 lbm	TUF FIBER 594, 15 LB BOX (101350514)							
	9.34 Gal	FRESH WATER							
3	1st Stage Tail Cement	VERSACEM (TM) SYSTEM (452010)	160.0	sacks	12.8	1.96	10.95	8.0	10.95
	10.95 Gal	FRESH WATER							
4	Displacement		286.00	bbl	8.33	.0	.0	10.0	
5	Fresh Water Spacer		20.00	bbl	8.33	.0	.0	6.0	
6	2nd Stage TAIL	VERSACEM (TM) SYSTEM (452010)	665.0	sacks	12.8	1.96	10.95	8.0	10.95
	10.95 Gal	FRESH WATER							
7	Displacement		122.00	bbl	8.33	.0	.0	10.0	
Calculated Values		Pressures		Volumes					
Displacement	408.8	Shut In: Instant		Lost Returns		Cement Slurry	456.7	Pad	
Top Of Cement	SURFACE	5 Min		Cement Returns	90	Actual Displacement	408.8	Treatment	
Frac Gradient		15 Min		Spacers	60	Load and Breakdown		Total Job	925.5
Rates									
Circulating		Mixing	8	Displacement	10	Avg. Job	9		
Cement Left In Pipe	Amount	27.58 ft	Reason	Shoe Joint					
Frac Ring # 1 @	ID	Frac ring # 2 @	ID	Frac Ring # 3 @	ID	Frac Ring # 4 @	ID		
The Information Stated Herein Is Correct				Customer Representative Signature					

The Road to Excellence Starts with Safety

Sold To #: 300721	Ship To #: 2959462	Quote #:	Sales Order #: 9911048
Customer: WPX ENERGY ROCKY MOUNTAIN LLC-EBUS	Customer Rep: Brunk, Andrew		
Well Name: RGU	Well #: 343-36-198	API/UWI #:	
Field: SULPHUR CREEK	City (SAP): MEEKER	County/Parish: Rio Blanco	State: Colorado
Legal Description:			
Lat: N 39.916 deg. OR N 39 deg. 54 min. 58.338 secs.		Long: W 108.34 deg. OR W -109 deg. 39 min. 36.972 secs.	
Contractor: CYCLONE 29	Rig/Platform Name/Num: CYCLONE 29		
Job Purpose: Cement Multiple Stages	Ticket Amount:		
Well Type: Development Well	Job Type: Cement Multiple Stages		
Sales Person: MAYO, MARK	Srv Supervisor: DEUSSEN, EDWARD	MBU ID Emp #: 485182	

Activity Description	Date/Time	Cht #	Rate bbl/min	Volume bbl		Pressure psig		Comments
				Stage	Total	Tubing	Casing	
Call Out	10/28/2012 04:30							
Pre-Convoy Safety Meeting	10/28/2012 07:15							ALL HES PERSONNEL
Crew Leave Yard	10/28/2012 07:30							1 ELITE, 2 660s, 1 PICKUP
Arrive At Loc	10/28/2012 11:00							RIG JUST STARTING TO RUN CASING
Assessment Of Location Safety Meeting	10/28/2012 11:15							BLOW 660 DOWN INTO SILO
Pre-Rig Up Safety Meeting	10/28/2012 12:30							ALL HES PERSONNEL
Rig-Up Equipment	10/28/2012 12:45							1 HARD LINE TO FLOOR, 2 WATER LINES TO UPRIGHT AND DAY TANK, 2 BULK HOSES TO SILOS AND 660
Pre-Job Safety Meeting	10/28/2012 14:00							
Start Job	10/28/2012 14:26							TD 3740', TP 3736', SJ 27.58, MW 9.5, OH 14 3/4" TO 1550', OH 13 1/2" TO 3740', CSG 9 5/8", 36# J-55, MSC TOOL @ 1580'
Pump Water	10/28/2012 14:27		2	2			120.0	FILL LINES
Pressure Test	10/28/2012 14:29							PRESSURED UP TO 3220 PSI - PRESSURE HELD VERY WELL
Pump Spacer 1	10/28/2012 14:32		6	40			407.0	FRESH WATER SPACER
Activity Description	Date/Time	Cht #	Rate bbl/min	Volume bbl		Pressure psig		Comments
				Stage	Total	Tubing	Casing	

Sold To #: 300721

Ship To #: 2959462

Quote #:

Sales Order #:

9911048

SUMMIT Version: 7.3.0045

Saturday, November 03, 2012 01:33:00

Pump Lead Cement	10/28/2012 14:43		8	168.7			720.0	535 SKS, 12.8 PPG, 1.77 YIELD, 9.34 GAL/SK / ADD 37.5 LBS TUFF FIBER IN FIRST 100 BBLS
Pump Tail Cement	10/28/2012 15:05		8	55.9			540.0	160 SKS, 12.8 PPG, 1.96 YIELD, 10.95 GAL/SK
Shutdown	10/28/2012 15:12							
Drop Top Plug	10/28/2012 15:13							RIG SUPPLIED WIPER DART
Pump Displacement	10/28/2012 15:16		10	286.7			1040. 0	FRESH WATER - SLOW RATE AS PLUG PASSES THRU TOOL
Slow Rate	10/28/2012 15:48		4	10			720.0	
Bump Plug	10/28/2012 15:51						1130. 0	
Check Floats	10/28/2012 15:52							FLOATS HELD - GOT 1 BBL BACK
Drop Opening Device For Multiple Stage Cementer	10/28/2012 15:54							
Pump Spacer 1	10/28/2012 16:08		6	20			426.0	TOOL OPENED
Pump Tail Cement	10/28/2012 16:16		8	232.1			545.0	665 SACKS, 12.8 PPG, 1.96 YIELD, 10.95 GAL/SK - ADD 37.5 LBS TUFF FIBER IN LAST 100 BBLS
Shutdown	10/28/2012 16:46							GOT 40 BBLS 1ST STAGE CEMENT BACK TO SURFACE / WASH UP ON TOP OF PLUG
Drop Top Plug	10/28/2012 16:48							RIG SUPPLIED PLUG
Pump Displacement	10/28/2012 16:50		10	122.1			868.0	
Slow Rate	10/28/2012 17:03		4	10			452.0	
Bump Plug	10/28/2012 17:06						1210. 0	GOT 50 BBLS 2ND STAGE CEMENT TO SURFACE
Other	10/28/2012 17:07							RELEASE PRESSURE
End Job	10/28/2012 17:08							NO BOOSTER TRAILER USED / NO ADD HOURS OR SUGAR / USED 5 BOXES TUFF FIBER
Post-Job Safety Meeting (Pre Rig-Down)	10/28/2012 17:15							

HALLIBURTON***Cementing Job Log***

Activity Description	Date/Time	Cht #	Rate bbl/ min	Volume bbl		Pressure psig		Comments
				Stage	Total	Tubing	Casing	
Rig-Down Equipment	10/28/2012 17:30							
Pre-Convoy Safety Meeting	10/28/2012 18:15							
Crew Leave Location	10/28/2012 18:30							THANK YOU FOR USING HALLIBURTON AND ED DEUSSEN AND CREW

Sold To # : 300721

Ship To # :2959462

Quote # :

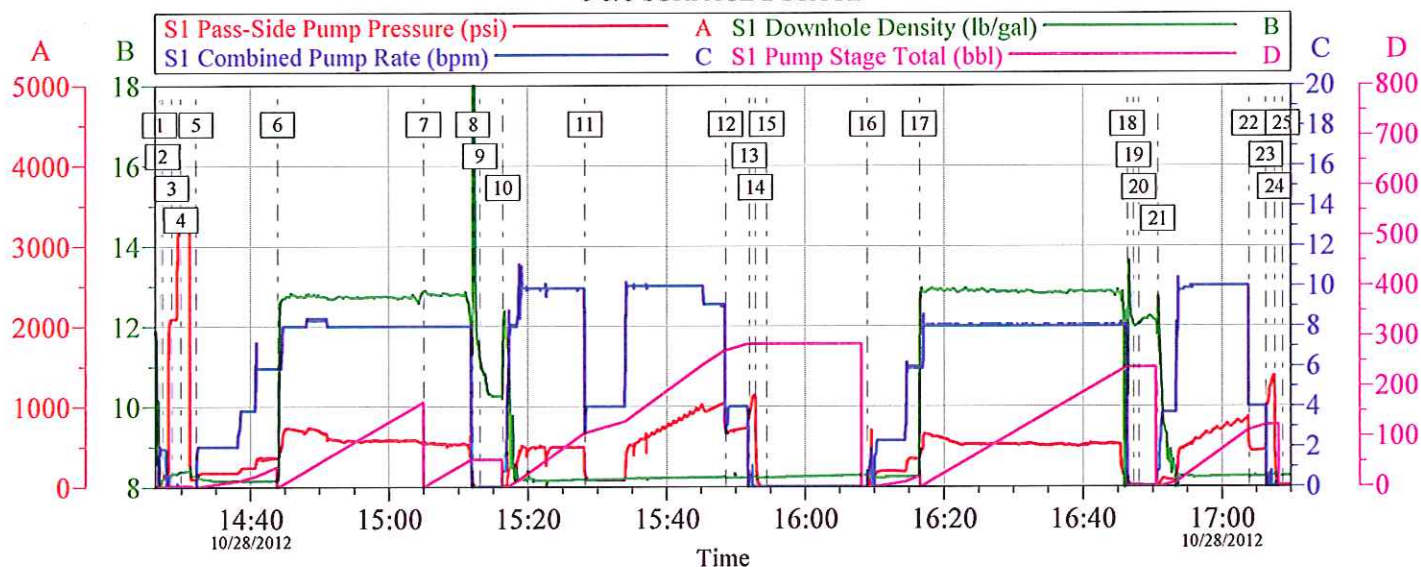
Sales Order # :

9911048

SUMMIT Version: 7.3.0045

Saturday, November 03, 2012 01:33:00

WPX - RGU 343-36-198 9 5/8 SURFACE 2 STAGE

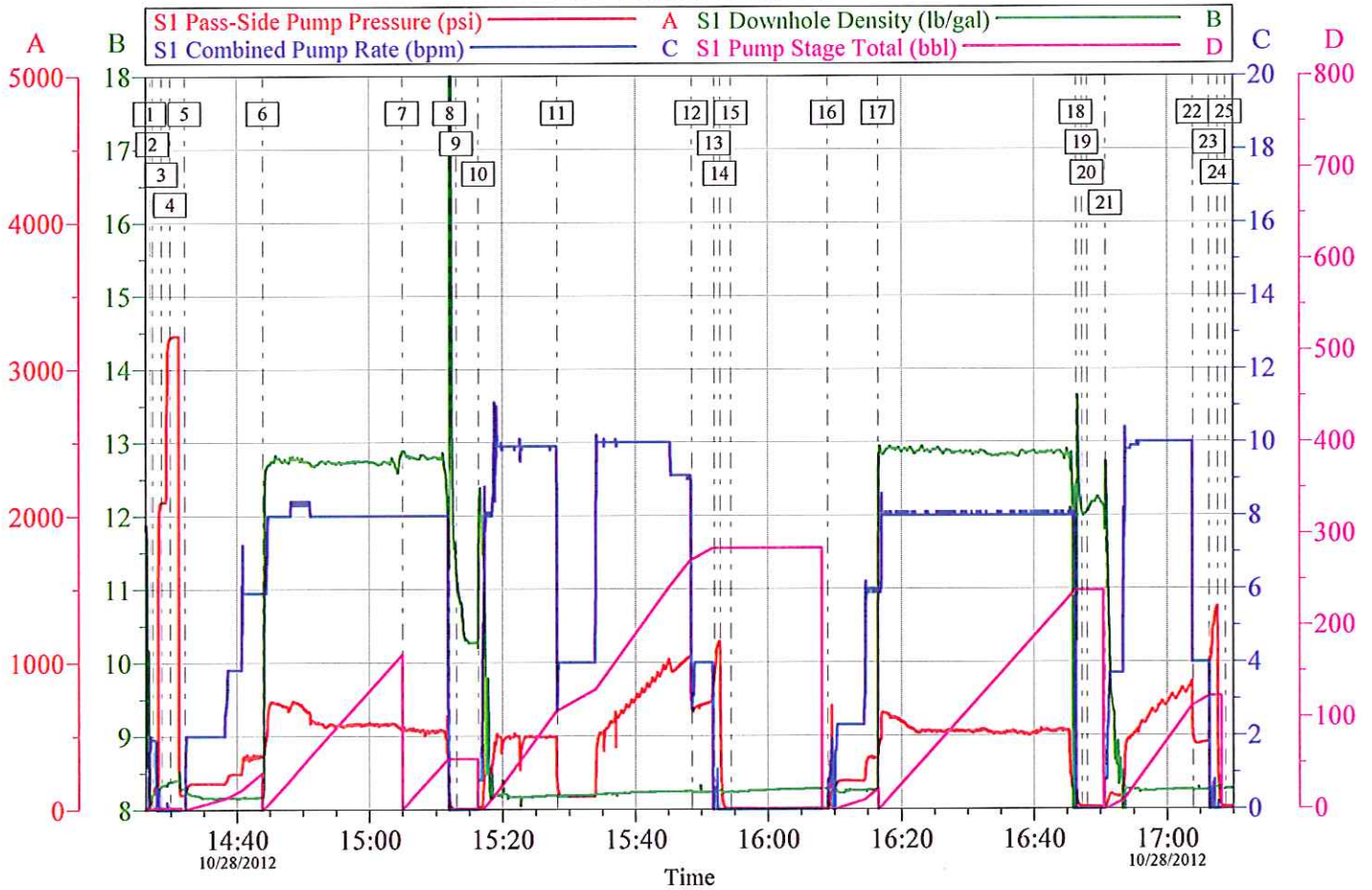


Local Event Log			
1 START JOB	14:26:56	2 FILL LINES	14:27:19
3 5TH GEAR STALLOUT	14:28:39	4 PRESSURE TEST	14:29:58
5 PUMP H2O SPACER	14:32:07	6 PUMP LEAD CEMENT	14:43:57
7 PUMP TAIL CEMENT	15:05:01	8 SHUTDOWN	15:12:07
9 DROP WIPER DART	15:13:08	10 PUMP DISPLACEMENT	15:16:26
11 SLOW RATE THROUGH TOOL	15:28:16	12 SLOW RATE	15:48:36
13 BUMP PLUG	15:51:58	14 CHECK FLOATS	15:52:51
15 DROP MSC OPENING DEVICE	15:54:29	16 PUMP SPACER/OPEN TOOL	16:08:58
17 PUMP 2ND STAGE TAIL	16:16:31	18 SHUTDOWN	16:46:23
19 WASH UP PUMP	16:47:17	20 DROP TOP PLUG	16:48:03
21 PUMP DISPLACEMENT	16:50:48	22 SLOW RATE	17:03:56
23 BUMP PLUG	17:06:22	24 RELEASE PRESSURE	17:07:39
25 END JOB	17:08:48		

Customer: WPX	Job Date: 28-Oct-2012	Sales Order #: 9911048
Well Description: RGU 343-36-198	Job Type: 2 STAGE SURFACE	ADC Used: YES
Company Rep: ANDREW BRUNK	Cement Supervisor: ED DEUSSEN	Elite #7: ANDREW LINN

OptiCem v6.4.10
28-Oct-12 17:33

WPX - RGU 343-36-198 9 5/8 SURFACE 2 STAGE



Customer: WPX	Job Date: 28-Oct-2012	Sales Order #: 9911048
Well Description: RGU 343-36-198	Job Type: 2 STAGE SURFACE	ADC Used: YES
Company Rep: ANDREW BRUNK	Cement Supervisor: ED DEUSSEN	Elite #7: ANDREW LINN

OptiCem v6.4.10
28-Oct-12 17:34