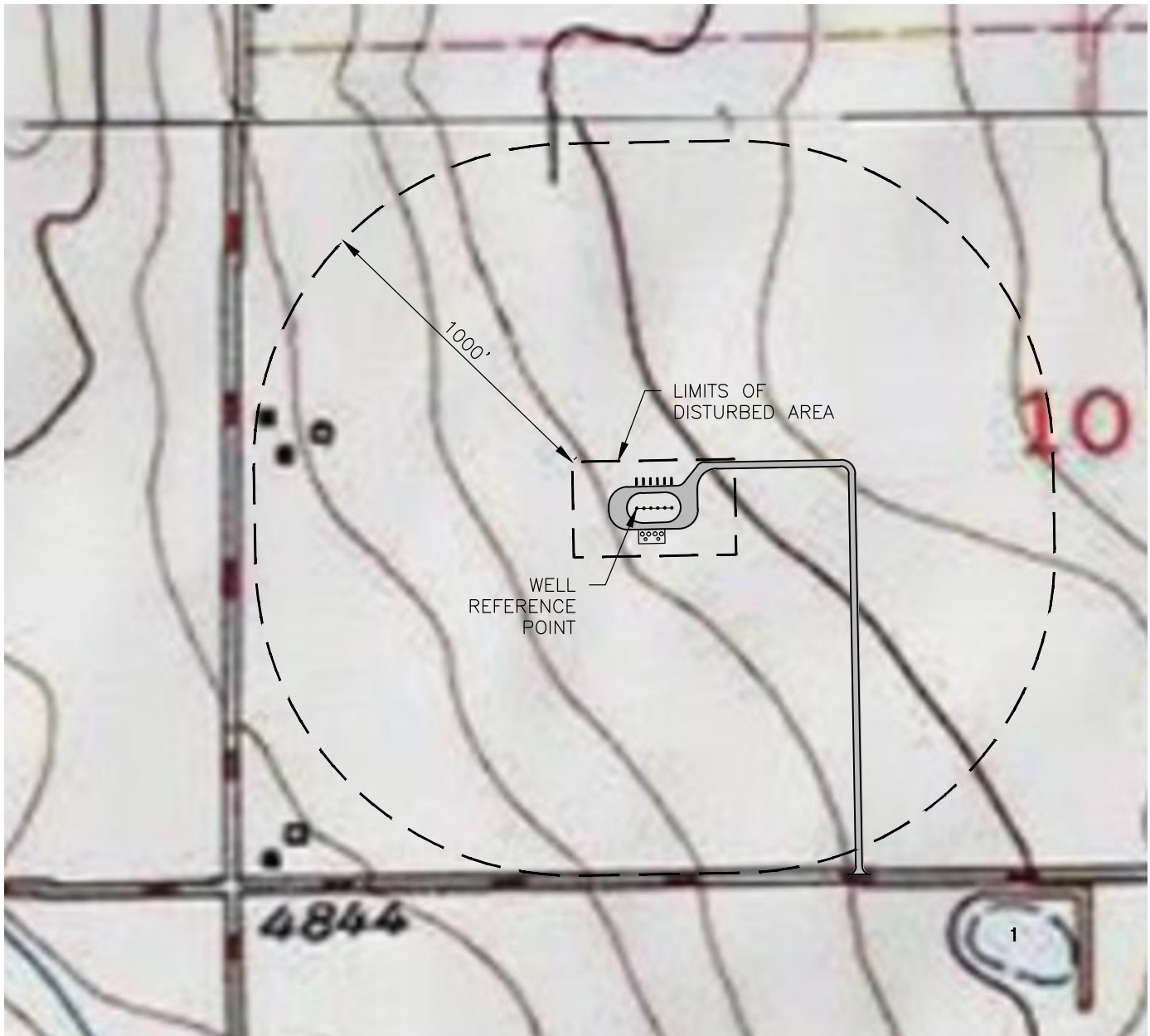
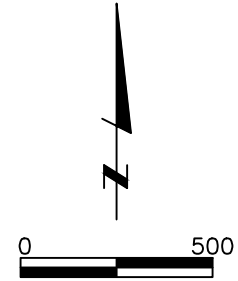


OPERATOR

ST. JAMES ENERGY OPERATING, INC.
11177 EAGLE VIEW DRIVE, STE 1
SANDY, UT 84092
(801) 576-1154

SURFACE WATER TABLE			
#	Description	Length	Direction
1	POND	1670'	S40°E



LAMP RYNEARSON
& ASSOCIATES

4715 Innovation Drive 970.226.0342 | P
Fort Collins, CO 80525 970.226.0879 | F
www.LRA-Inc.com

ALBRIGHTON 10-6N-64W
HYDROLOGY MAP

drawn by

SSZ

date

2/28/2013

cogcc id

project - task number

0213005.01

book and page

ST. JAMES 01 38-43

surface - location

SEC 10 T6N R64W

path\\filename P:_Engineering\0213005.01\DRAWINGS\EXHIBITS\Form 2A\Hydrology Map.dwg