

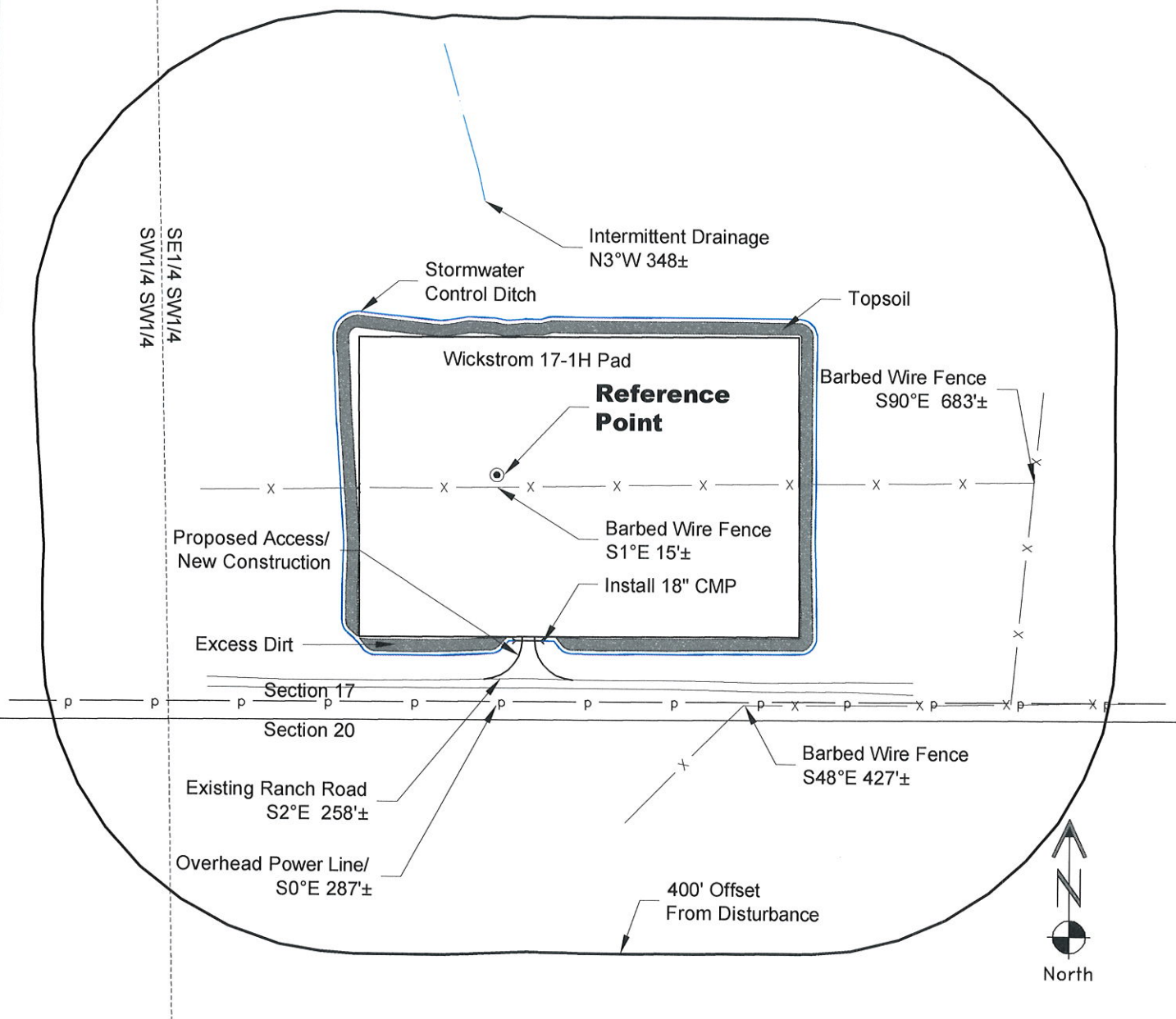
VEGETATION:
PASTURE

SURFACE USE:
GRAZING

LOCATION DRAWING

REFERENCE POINT

LATITUDE: 40.48200
LONGITUDE: -104.12155
FOOTAGE: 310 FSL 1740 FWL
GROUND ELEVATION: 4671.3
PDOP: 2.2 DATE: 1/23/2013
INSTRUMENT OPERATOR: MARC WOODARD



NOTE-DISTANCE TO NEAREST:

Property Line - S 310'±
Public Road - MCR 2 - N 89°E 3535'±
Building - House S 25°E 4,100'±
Railroad - S13°E 16.7 Miles±
Powerline - S0°E 287'±

DISTURBANCE ACREAGE:
6.2± DRILLING OPERATIONS

NOTE:

ALL PRODUCTION FACILITIES WILL BE ON PAD.

2/6/13



LAND SURVEYING AND MAPPING
LAFAYETTE - WINTER PARK
Ph 303 666 0379 Fx 303 665 6320

CONDOR ENERGY TECHNOLOGY LLC
WICKSTROM 17-1H PAD

SE1/4 SW1/4 SECTION 17 T6N R60W
6th PM MORGAN COUNTY COLORADO