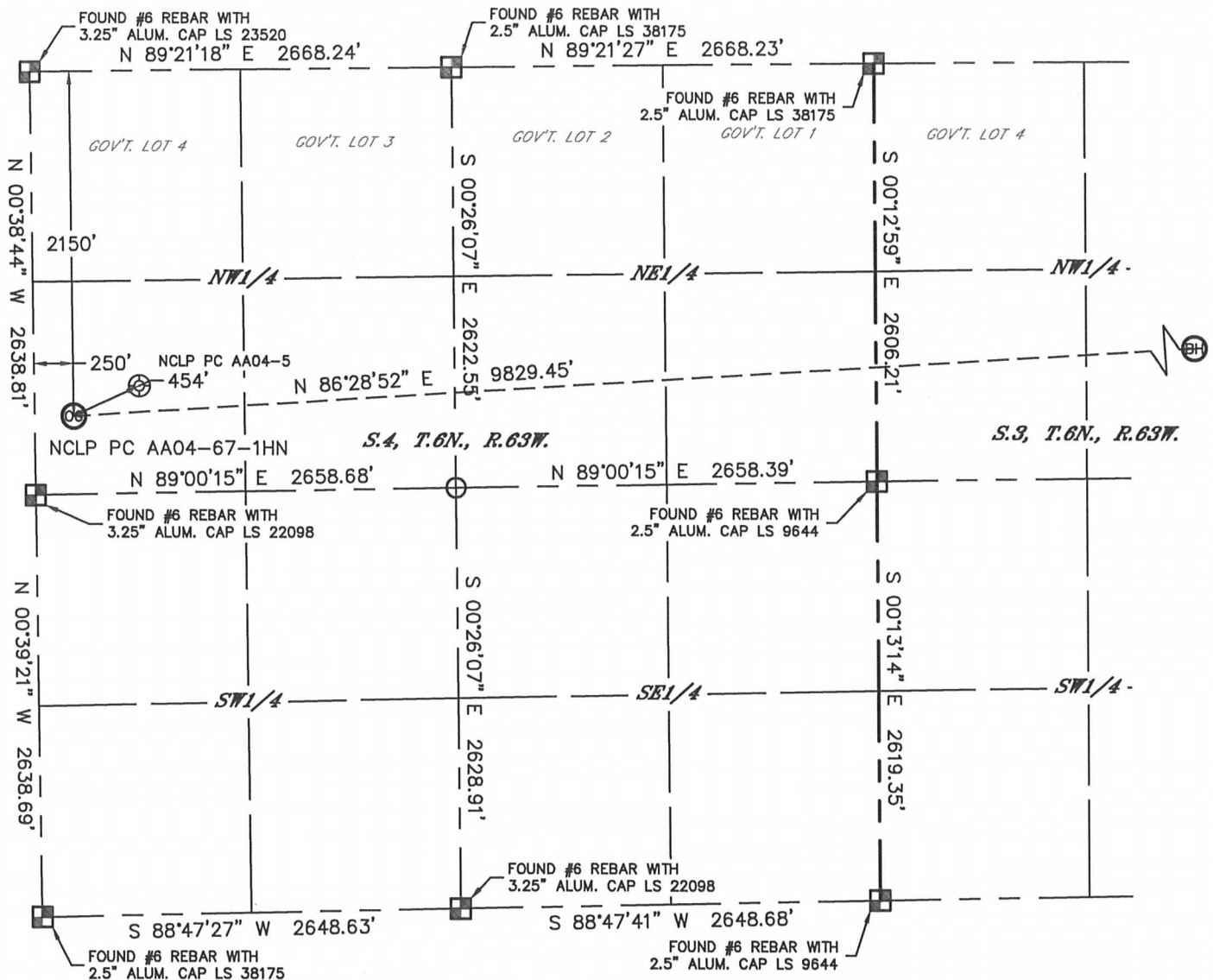


# WELL LOCATION CERTIFICATE

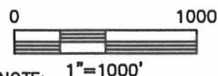
THIS MAP DOES NOT REPRESENT A BOUNDARY SURVEY

SECTION: 4  
TOWNSHIP: 6N  
RANGE: 63W



In accordance with a request from Greg Wilson with Noble Energy Inc., Lat40°, Inc. has determined the surface location of the NCLP PC AA04-67-1HN to be 2150' from the NORTH line and 250' from the WEST line as measured at right angles from the section lines of Section 4, Township 6 North, Range 63 West and the bottom hole to be 1650' from the NORTH line and 535' from the EAST line as measured at right angles from the section lines of Section 3, Township 6 North, Range 63 West of the Sixth Principal Meridian, County of Weld, State of Colorado.

I hereby state that this Well Location Certificate was prepared by me, or under my direct supervision, that the fieldwork was completed on 6/21/2012, for and on behalf of Noble Energy Inc. That this is not a Land Survey Plat or an Improvement Survey Plat, and that it is not to be relied upon for establishment of fence, building, or other future improvement lines.



NOTE: 1"=1000'

- 1) Bearings shown are Grid Bearings of the Colorado State Plane Coordinate System, North Zone, North American Datum 1983/2007. The lineal dimensions as contained herein are based upon the "U.S. Survey Foot."
- 2) Ground elevations are based on an observed GPS elevation (NAVD 1988 DATUM).
- 3) NEAREST EXISTING WELL: NCLP PC AA04-5, 454'
- 4) IMPROVEMENTS: See LOCATION DRAWING for all visible improvements within 400' of disturbed area.
- 5) SURFACE USE: RANGELAND
- 6) INSTRUMENT OPERATOR: ADAM KELLY

## SURFACE LOCATION

LAT: 40.51710N  
LONG: 104.45032W  
PDOP: 1.6  
ELEV: 4710'  
1/4,1/4: SW1/4NW1/4  
NEAREST PROPERTY LINE: 487' SOUTH

## BOTTOM HOLE

LAT: 40.51843N  
LONG: 104.41502W

## NOTE

According to Colorado law, you must commence any legal action based upon any defect in this W.L.C. within three years after you discover such defect. In no event, may any action based upon any defect in this survey be commenced more than ten years after the date of the certificate shown hereon. (13-80-105 C.R.S.)

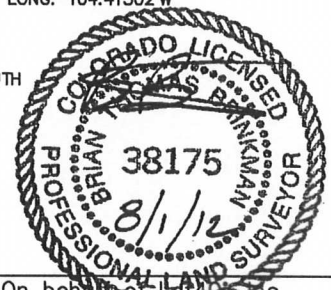
## LEGEND

- = ALIQUOT MONUMENT AS DESCRIBED
- = CALCULATED POSITION

## SHEET 1 OF 2

Brian T. Brinkman—On behalf of Lat40°, Inc.  
Colorado Licensed Professional  
Land Surveyor No. 38175

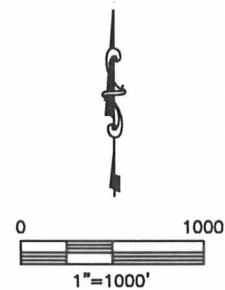
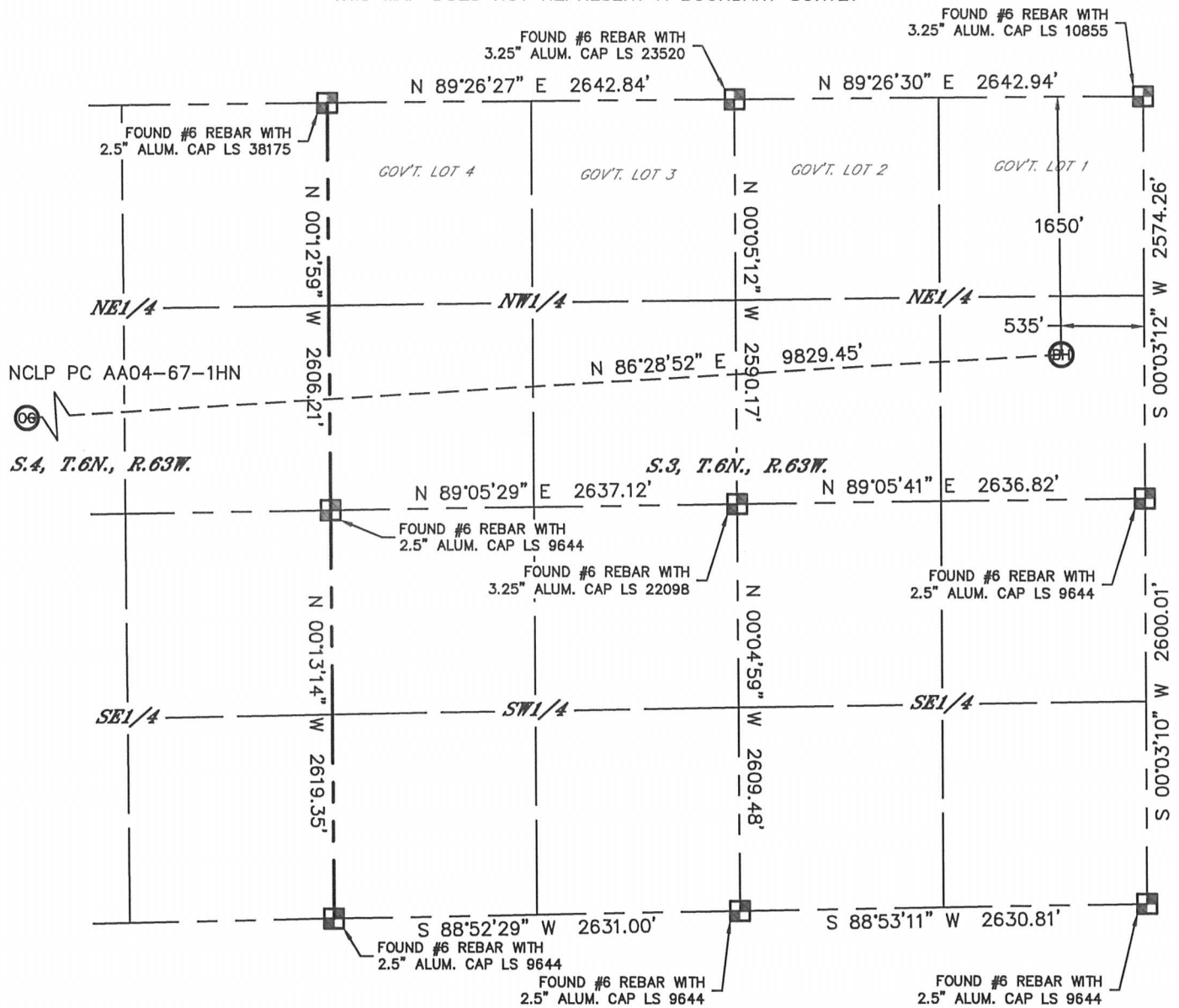
DATE: 8/1/2012  
PROJECT#: 2012094



# WELL LOCATION CERTIFICATE

THIS MAP DOES NOT REPRESENT A BOUNDARY SURVEY



SECTION: 4  
TOWNSHIP: 6N  
RANGE: 63W



## NOTE

According to Colorado law, you must commence any legal action based upon any defect in this W.L.C. within three years after you discover such defect. In no event, may any action based upon any defect in this survey be commenced more than ten years after the date of the certificate shown hereon. (13-80-105 C.R.S.)

## LEGEND

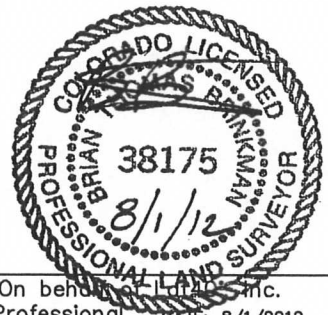
-  = ALIQUOT MONUMENT AS DESCRIBED
-  = CALCULATED POSITION

## SHEET 2 OF 2

Brian T. Brinkman—On behalf of Lat40°, Inc.

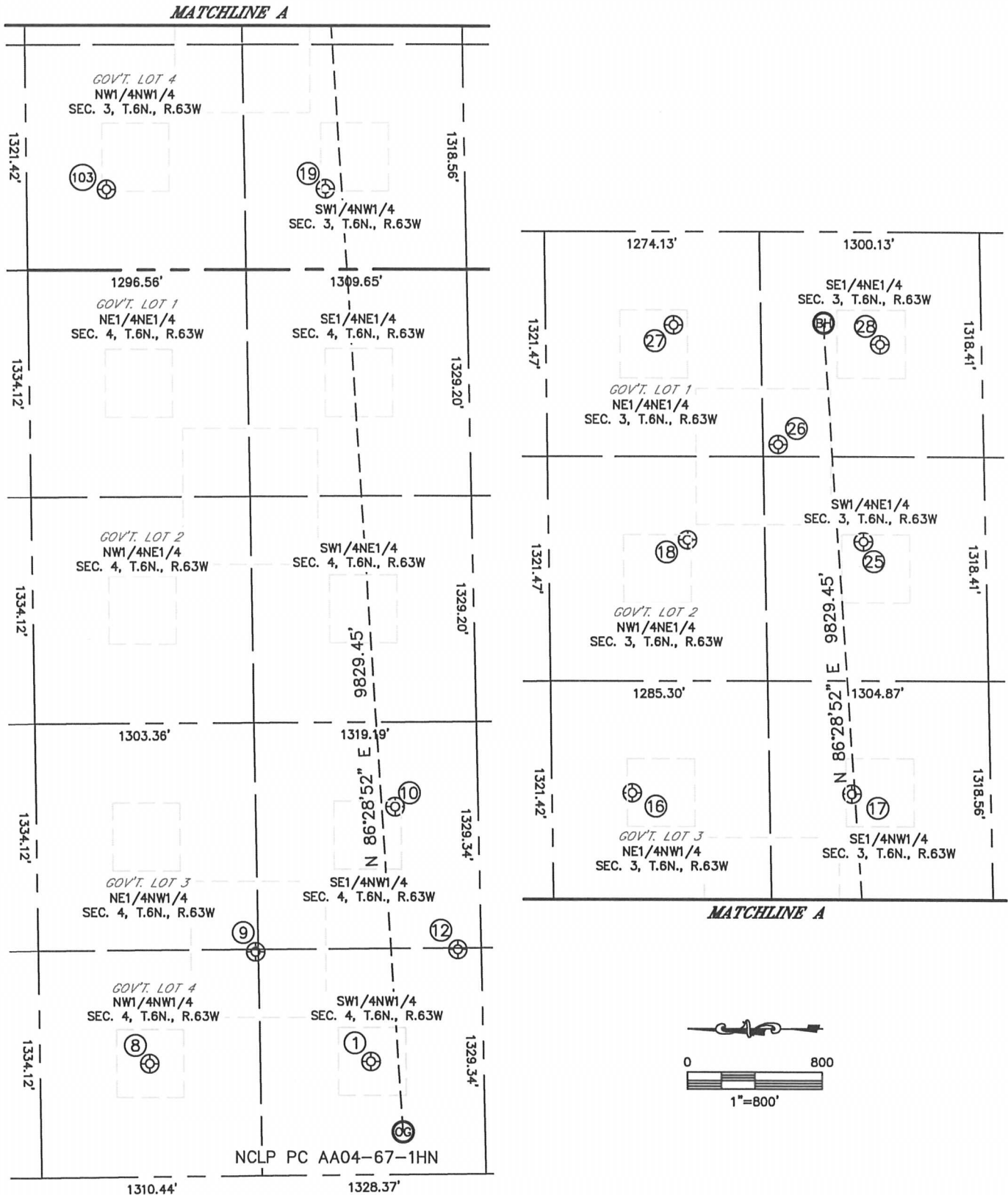
Colorado Licensed Professional  
Land Surveyor No. 38175

DATE: 8/1/2012  
PROJECT#: 2012094



**SITE SKETCH**  
NCLP PC AA04-67-1HN  
SHEET 1 OF 2

SECTION: 4  
TOWNSHIP: 6N  
RANGE: 63W



## SITE SKETCH

NCLP PC AA04-67-1HN  
SHEET 1 OF 2

SECTION: 4  
TOWNSHIP: 6N  
RANGE: 63W

①

NCLP PC AA04-05  
SW1/4NW1/4  
1967' FNL  
665' FWL  
LAT-40.51760°N  
LONG-104.44883°W  
PDOP: 2.0  
ELEV: 4709'

⑧

NCLP PC AA04-04  
NW1/4NW1/4  
652' FNL  
666' FWL  
LAT-40.52121°N  
LONG-104.44882°W  
PDOP: 2.4  
ELEV: 4711'

⑨

NCLP PC AA04-19  
NW1/4NW1/4  
1290' FNL  
1316' FWL  
LAT-40.51946°N  
LONG-104.44648°W  
PDOP: 2.3  
ELEV: 4709'

⑩

NCLP PC AA04-06  
SE1/4NW1/4  
2133' FNL  
2162' FWL  
LAT-40.51715°N  
LONG-104.44345°W  
PDOP: 2.2  
ELEV: 4709'

⑫

NCLP PC AA04-20  
SW1/4NW1/4  
2491' FNL  
1321' FWL  
LAT-40.51617°N  
LONG-104.44647°W  
PDOP: 1.9  
ELEV: 4707'

⑯

CORNISH 21-3  
NE1/4NW1/4  
473' FNL  
1984' FWL  
LAT-40.52168°N  
LONG-104.42491°W  
PDOP: 2.0  
ELEV: 4714'

⑰

CORNISH 22-3  
SE1/4NW1/4  
1776' FNL  
1973' FWL  
LAT-40.51811°N  
LONG-104.42498°W  
PDOP: 2.0  
ELEV: 4711'

⑱

BUCKCHERRY USX  
AA03-02  
NW1/4NE1/4  
822' FNL  
1812' FEL  
LAT-40.52071°N  
LONG-104.41957°W  
PDOP: 2.1  
ELEV: 4712'

⑲

CORNISH 12-3  
SW1/4NW1/4  
1774' FNL  
472' FWL  
LAT-40.51812°N  
LONG-104.43038°W  
PDOP: 2.1  
ELEV: 4709'

⑳

BROWN USX AA03-7  
SW1/4NE1/4  
1866' FNL  
1819' FEL  
LAT-40.51785°N  
LONG-104.41965°W  
PDOP: 1.6  
ELEV: 4707'

㉑

BROWN USX AA03-17  
SE1/4NE1/4  
1369' FNL  
1249' FEL  
LAT-40.51921°N  
LONG-104.41757°W  
PDOP: 1.8  
ELEV: 4709'

㉒

BROWN USX AA03-1  
NE1/4NE1/4  
757' FNL  
548' FEL  
LAT-40.52088°N  
LONG-104.41502°W  
PDOP: 1.8  
ELEV: 4711'

㉓

BROWN USX AA03-8  
SE1/4NE1/4  
1979' FNL  
660' FEL  
LAT-40.51753°N  
LONG-104.41548°W  
PDOP: 1.6  
ELEV: 4708'

103

CORNISH 11-3  
NW1/4NW1/4  
473' FNL  
472' FWL  
LAT-40.52169°N  
LONG-104.43034°W  
PDOP: 2.5  
ELEV: 4716'