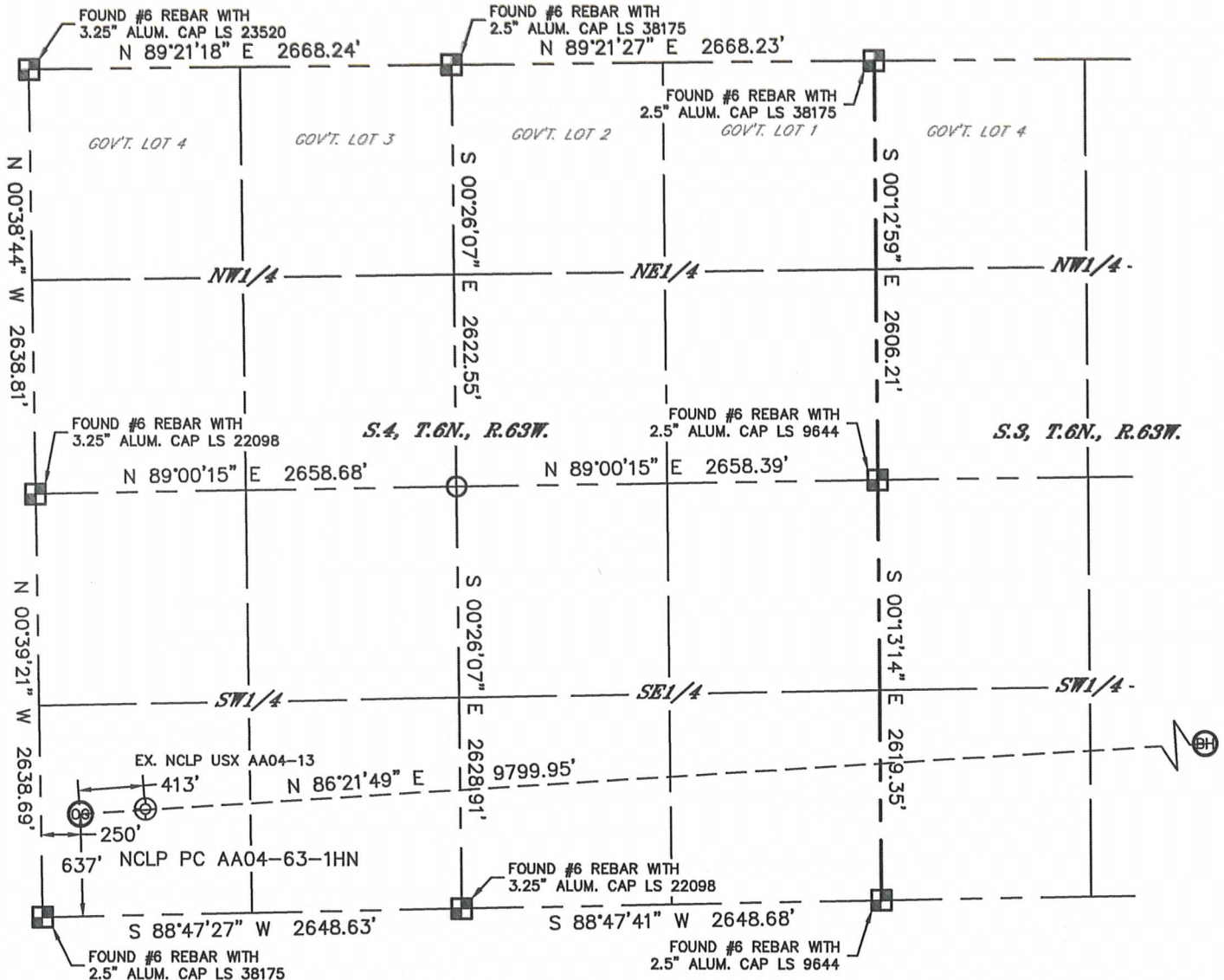


WELL LOCATION CERTIFICATE

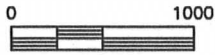
THIS MAP DOES NOT REPRESENT A BOUNDARY SURVEY

SECTION: 4
TOWNSHIP: 6N
RANGE: 63W



In accordance with a request from Greg Wilson with Noble Energy Inc. Lat40°, Inc. has determined the surface location of the NCLP PC AA04-63-1HN to be 637' from the SOUTH line and 250' from the WEST line as measured at right angles from the section lines of Section 4, Township 6 North, Range 63 West and the bottom hole to be 1060' from the SOUTH line and 535' from the EAST line as measured at right angles from the section lines of Section 3, Township 6 North, Range 63 West of the Sixth Principal Meridian, County of Weld, State of Colorado.

I hereby state that this Well Location Certificate was prepared by me, or under my direct supervision, that the fieldwork was completed on 6/21/2012, for and on behalf of Noble Energy Inc. That this is not a Land Survey Plat or an Improvement Survey Plat, and that it is not to be relied upon for establishment of fence, building, or other future improvement lines.



NOTE: 1"=1000'

- 1) Bearings shown are Grid Bearings of the Colorado State Plane Coordinate System, North Zone, North American Datum 1983/2007. The lineal dimensions as contained herein are based upon the "U.S. Survey Foot."
- 2) Ground elevations are based on an observed GPS elevation (NAVD 1988 DATUM).
- 3) NEAREST EXISTING WELL: NCLP USX AA04-13, 413'
- 4) IMPROVEMENTS: See LOCATION DRAWING for all visible improvements within 400' of disturbed area.
- 5) SURFACE USE: FALLOW CROP
- 6) INSTRUMENT OPERATOR: ADAM KELLY

SURFACE LOCATION

LAT: 40.51028°N
LONG: 104.45032°W
PDOP: 2.6
ELEV: 4710'
1/4,1/4: SW1/4SW1/4
NEAREST PROPERTY LINE: 2000' NORTH

BOTTOM HOLE

LAT: 40.51166°N
LONG: 104.41514°W

NOTE

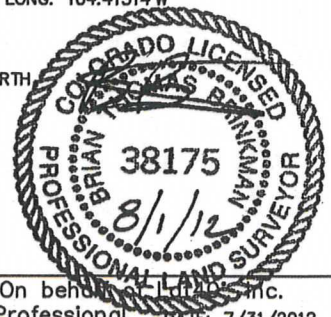
According to Colorado law, you must commence any legal action based upon any defect in this W.L.C. within three years after you discover such defect. In no event, may any action based upon any defect in this survey be commenced more than ten years after the date of the certificate shown hereon. (13-80-105 C.R.S.)

LEGEND

- = ALIQUOT MONUMENT AS DESCRIBED
- = CALCULATED POSITION

SHEET 1 OF 2

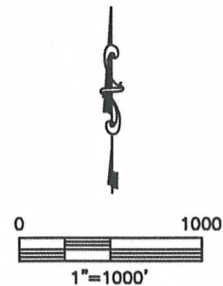
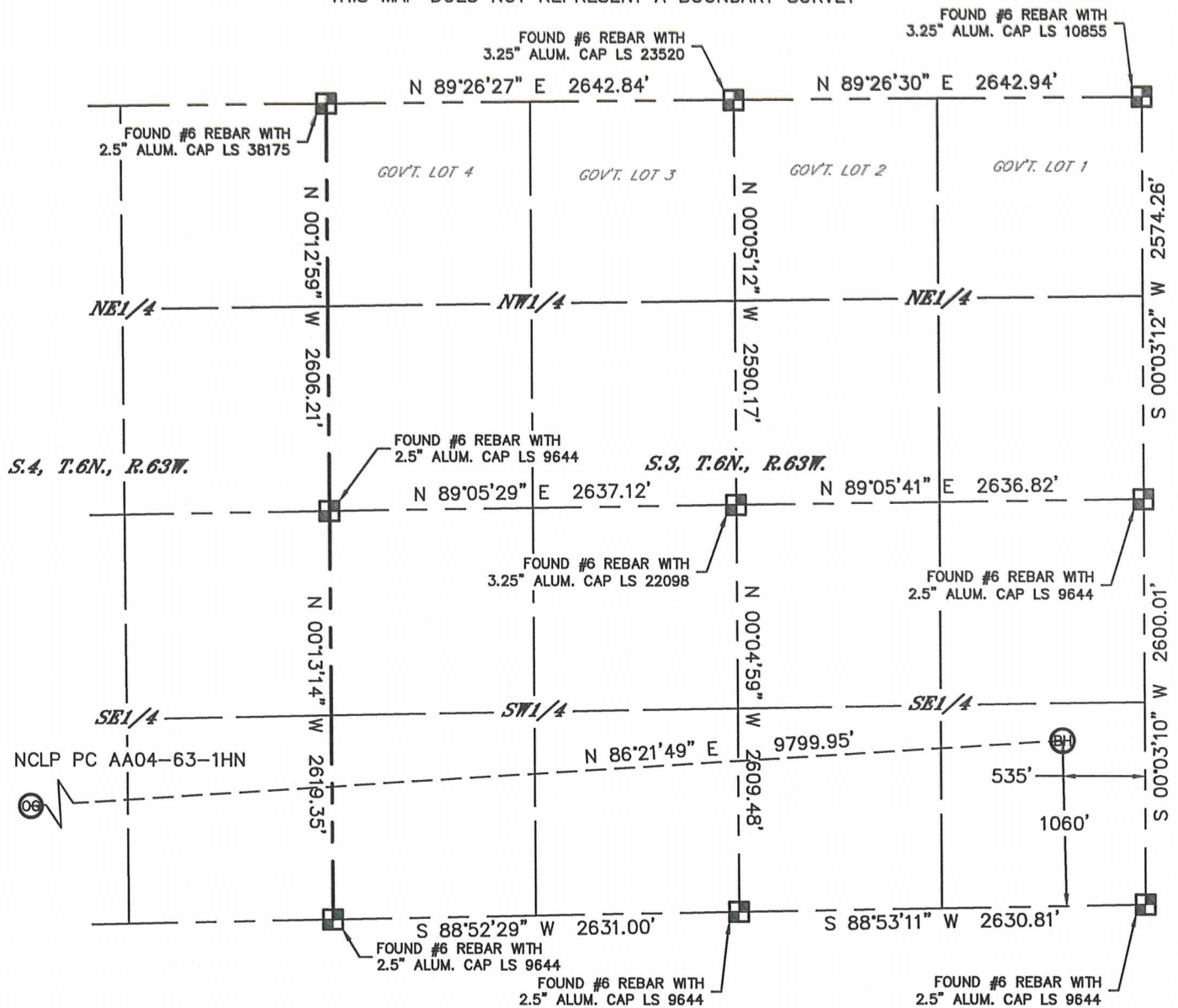
Brian T. Brinkman-On behalf of Lat40°, Inc.
Colorado Licensed Professional
Land Surveyor No. 38175
DATE: 7/31/2012
PROJECT#: 2012094



WELL LOCATION CERTIFICATE

THIS MAP DOES NOT REPRESENT A BOUNDARY SURVEY

SECTION: 4
TOWNSHIP: 6N
RANGE: 63W



NOTE
According to Colorado law, you must commence any legal action based upon any defect in this W.L.C. within three years after you discover such defect. In no event, may any action based upon any defect in this survey be commenced more than ten years after the date of the certificate shown hereon. (15-80-105 C.R.S.)

LEGEND
 = ALIQUOT MONUMENT AS DESCRIBED
 = CALCULATED POSITION

SHEET 2 OF 2

Brian T. Brinkman—On behalf of Lat40°, Inc.
Colorado Licensed Professional
Land Surveyor No. 38175
DATE: 7/31/2012
PROJECT#: 2012094

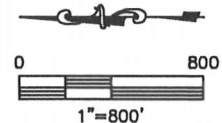
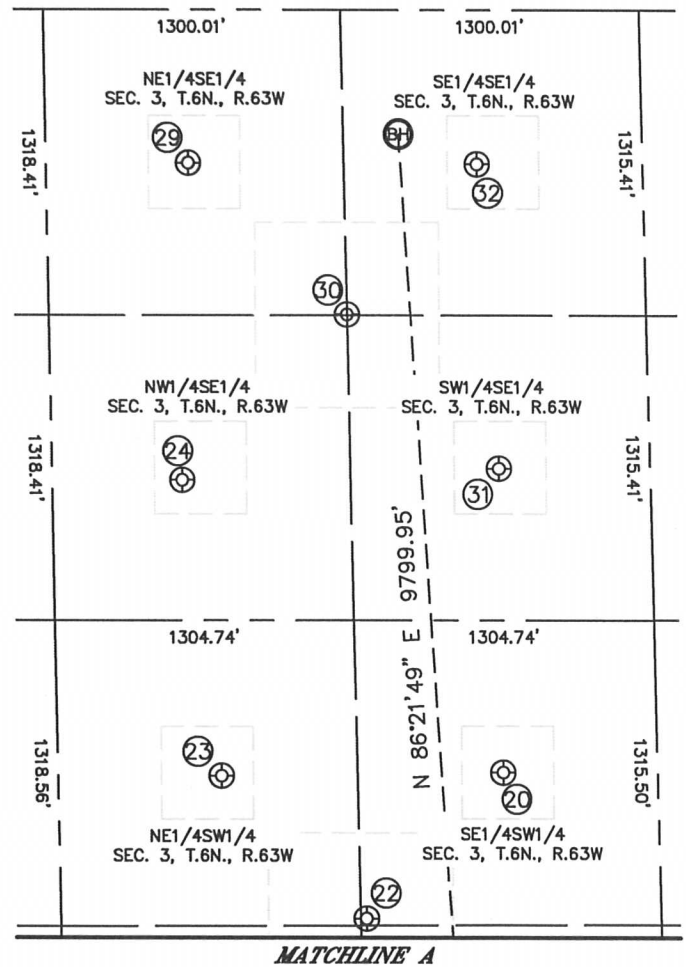
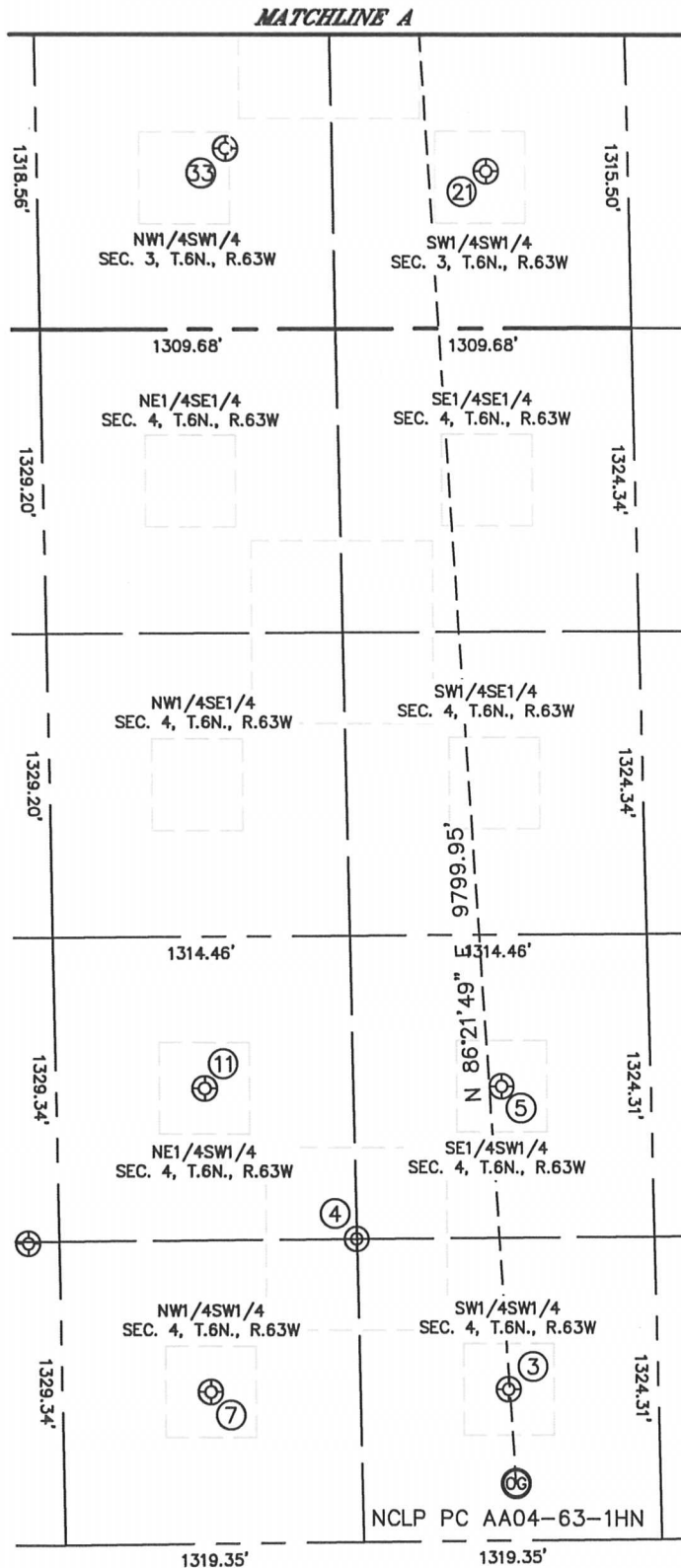


SITE SKETCH

NCLP PC AA04-63-1HN

SHEET 1 OF 2

SECTION: 4
TOWNSHIP: 6N
RANGE: 63W



SITE SKETCH

NCLP PC AA04-63-1HN
SHEET 2 OF 2

SECTION: 4
TOWNSHIP: 6N
RANGE: 63W

③

NCLP PC AA04-13
SW1/4SW1/4
660' FSL
663' FWL
LAT-40.51035°N
LONG-104.44884°W
PDOP: 1.6
ELEV: 4707'

④

NCLP PC AA04-25
NE1/4SW1/4
1319' FSL
1327' FWL
LAT-40.51217°N
LONG-104.44645°W
PDOP: 1.5
ELEV: 4703'

⑤

NCLP PC AA04-14
SE1/4SW1/4
658' FSL
1988' FWL
LAT-40.51038°N
LONG-104.44408°W
PDOP: 1.6
ELEV: 4697'

⑦

NCLP PC AA04-12
NW1/4SW1/4
1979' FSL
664' FWL
LAT-40.51397°N
LONG-104.44883°W
PDOP: 1.8
ELEV: 4711'

⑪

NCLP PC AA04-11
NE1/4SW1/4
1973' FSL
1992' FWL
LAT-40.51399°N
LONG-104.44406°W
PDOP: 2.2
ELEV: 4705'

⑫

BROWN USX AA03-14
SE1/4SW1/4
673' FSL
1975' FWL
LAT-40.51054°N
LONG-104.42506°W
PDOP: 2.2
ELEV: 4700'

⑬

BROWN USX AA03-13
SW1/4SW1/4
626' FSL
685' FWL
LAT-40.51039°N
LONG-104.42970°W
PDOP: 2.2
ELEV: 4700'

⑭

BROWN USX AA03-25
SE1/4SW1/4
1282' FSL
1346' FWL
LAT-40.51220°N
LONG-104.42730°W
PDOP: 2.1
ELEV: 4702'

⑮

BROWN USX AA03-11
NE1/4SW1/4
1898' FSL
1964' FWL
LAT-40.51390°N
LONG-104.42506°W
PDOP: 2.1
ELEV: 4704'

⑯

BROWN USX AA03-10
NW1/4SE1/4
2038' FSL
2028' FEL
LAT-40.51431°N
LONG-104.42046°W
PDOP: 2.1
ELEV: 4706'

⑰

BROWN USX AA03-9
NE1/4SE1/4
1980' FSL
660' FEL
LAT-40.51418°N
LONG-104.41554°W
PDOP: 1.6
ELEV: 4714'

⑱

BROWN USX AA03-23
NE1/4SE1/4
1303' FSL
1313' FEL
LAT-40.51231°N
LONG-104.41792°W
PDOP: 1.7
ELEV: 4713'

⑳

BROWN USX AA03-15
SW1/4SE1/4
658' FSL
1978' FEL
LAT-40.51053°N
LONG-104.42034°W
PDOP: 1.7
ELEV: 4706'

㉑

BROWN USX AA03-16
SE1/4SE1/4
723' FSL
665' FEL
LAT-40.51073°N
LONG-104.41562°W
PDOP: 1.5
ELEV: 4740'

㉒

BUCKCHERRY USX
AA03-12
NW1/4SW1/4
1779' FSL
788' FWL
LAT-40.51355°N
LONG-104.42929°W
PDOP: 1.6
ELEV: 4701'