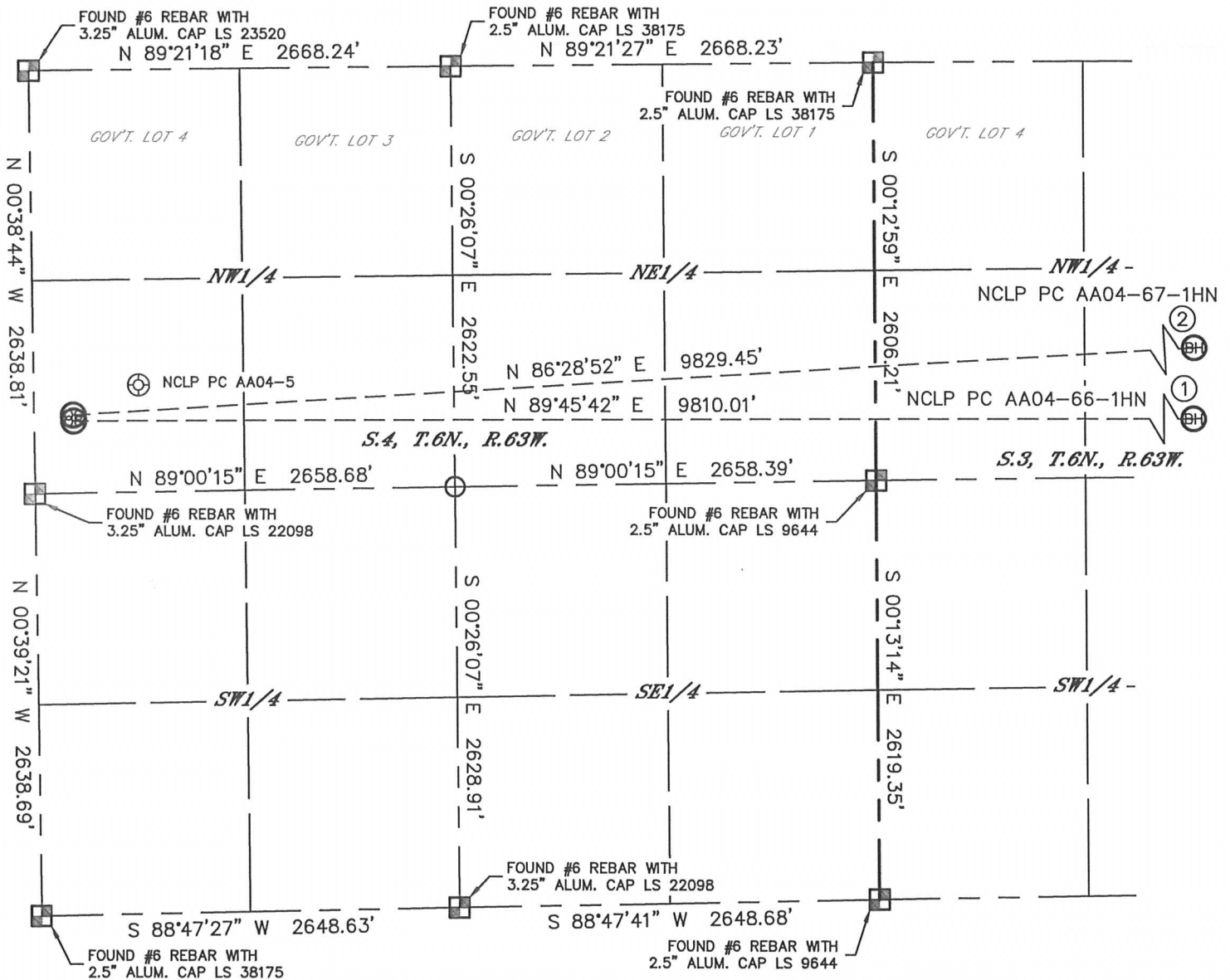


# MULTI-WELL PLAN

NCLP PC AA04-66-1HN PAD

THIS MAP DOES NOT REPRESENT A BOUNDARY SURVEY

SECTION: 4  
TOWNSHIP: 6N  
RANGE: 63W



①

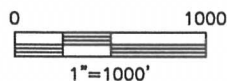
-BOTTOM HOLE-  
NCLP PC AA04-66-1HN  
2250' FNL  
535' FEL  
LAT: 40.51679°N  
LONG: 104.41505°W

②

-BOTTOM HOLE-  
NCLP PC AA04-67-1HN  
1650' FNL  
535' FEL  
LAT: 40.51843°N  
LONG: 104.41502°W

## LEGEND

- = ALIQUOT MONUMENT AS DESCRIBED
- = CALCULATED POSITION



SHEET 1 OF 2

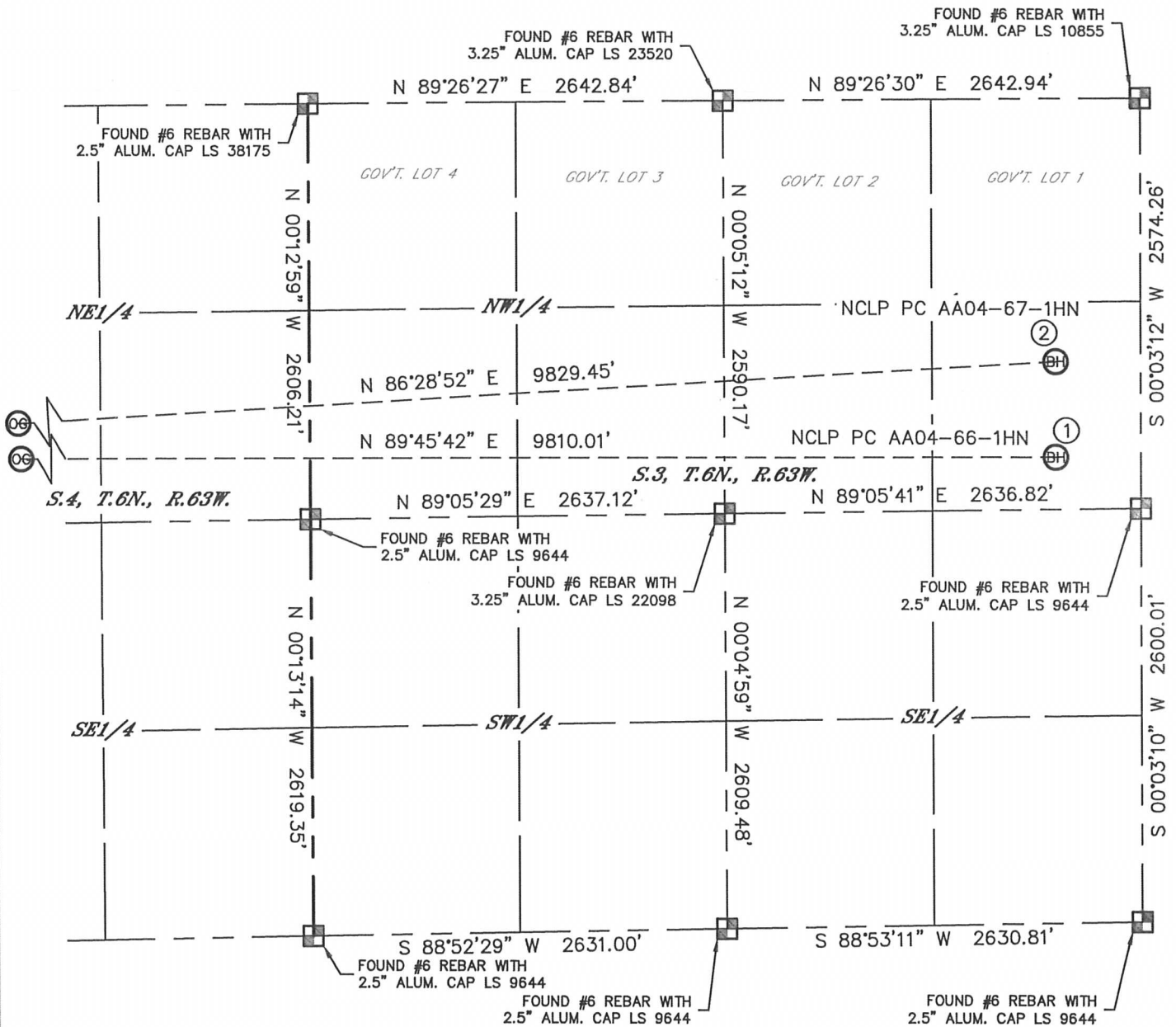
DATE: rev 9/12/2012  
PROJECT#: 2012094

# MULTI-WELL PLAN

NCLP PC AA04-66-1HN PAD

THIS MAP DOES NOT REPRESENT A BOUNDARY SURVEY

SECTION: 4  
TOWNSHIP: 6N  
RANGE: 63W





①

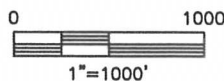
—BOTTOM HOLE—  
NCLP PC AA04-66-1HN  
2250' FNL  
535' FEL  
LAT: 40.51679°N  
LONG: 104.41505°W

②

—BOTTOM HOLE—  
NCLP PC AA04-67-1HN  
1650' FNL  
535' FEL  
LAT: 40.51843°N  
LONG: 104.41502°W

## LEGEND

-  = ALIQUOT MONUMENT AS DESCRIBED
-  = CALCULATED POSITION



SHEET 2 OF 2

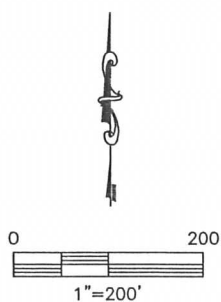
DATE: rev 9/12/2012  
PROJECT#: 2012094

Lat40°, Inc. 1635 Foxtrail Drive, Suite 325 Loveland, CO 970-776-3321

## MULTI-WELL PLAN

NCLP PC AA04-66-1HN PAD

SECTION: 4  
TOWNSHIP: 6N  
RANGE: 63W



DATE: 8/1/2012  
PROJECT#: 2012094