
From: Andrews - DNR, David [mailto:david.andrews@state.co.us]

Sent: Sunday, March 24, 2013 3:22 PM

To: Gardner, Michael

Cc: Canfield, Chris; Decker, Lisa; Moss, Brad; Blaney, Karolina; Matt Lepore - DNR; Steven Lindblom - DNR; James Milne - DNR; Margaret Ash - DNR

Subject: Re: WPX Well Information Request

Mike,

Based on the data provided, no further follow-up is required for the gas wells.

Thanks,

David D. Andrews, P.E., P.G.

Engineering Supervisor - Western Colorado

State of Colorado

Oil and Gas Conservation Commission

NEW ADDRESS, EFFECTIVE 1/3/2013:

796 Megan Avenue, Suite 201

Rifle, Colorado 81650

Office Phone: (970) 625-2497 Ext. 1
Cell Phone: (970) 456-5262
Fax: (970) 625-5682
E-mail: David.Andrews@state.co.us
Website: <http://www.colorado.gov/cogcc>

On Fri, Mar 22, 2013 at 10:31 PM, Gardner, Michael <Michael.Gardner@wpxenergy.com> wrote:

Dave,

Per your request, WPX has assembled Braden Head and fluid production data for all wells within a 1/4 mile radius of the NGL valve set. Attached you will also find:

- A map showing the proximity of the WPX wells within this radius;
- A site map showing features of the current site investigation; and
- A summary of preliminary analytical data comparing the Williams NGL product, a sample of Williams initial pot hole (BHPH #1) fluids, a sample of fluids from WPX North Trench #1, and WPX condensate (Grand Valley Composite).

Please do not hesitate to contact me if you need additional information. Thanks.

Michael Gardner

Environmental Manager E&P

WPX Energy

michael.gardner@wpxenergy.com

Cell: 970-623-4875

Office: 970-263-2760

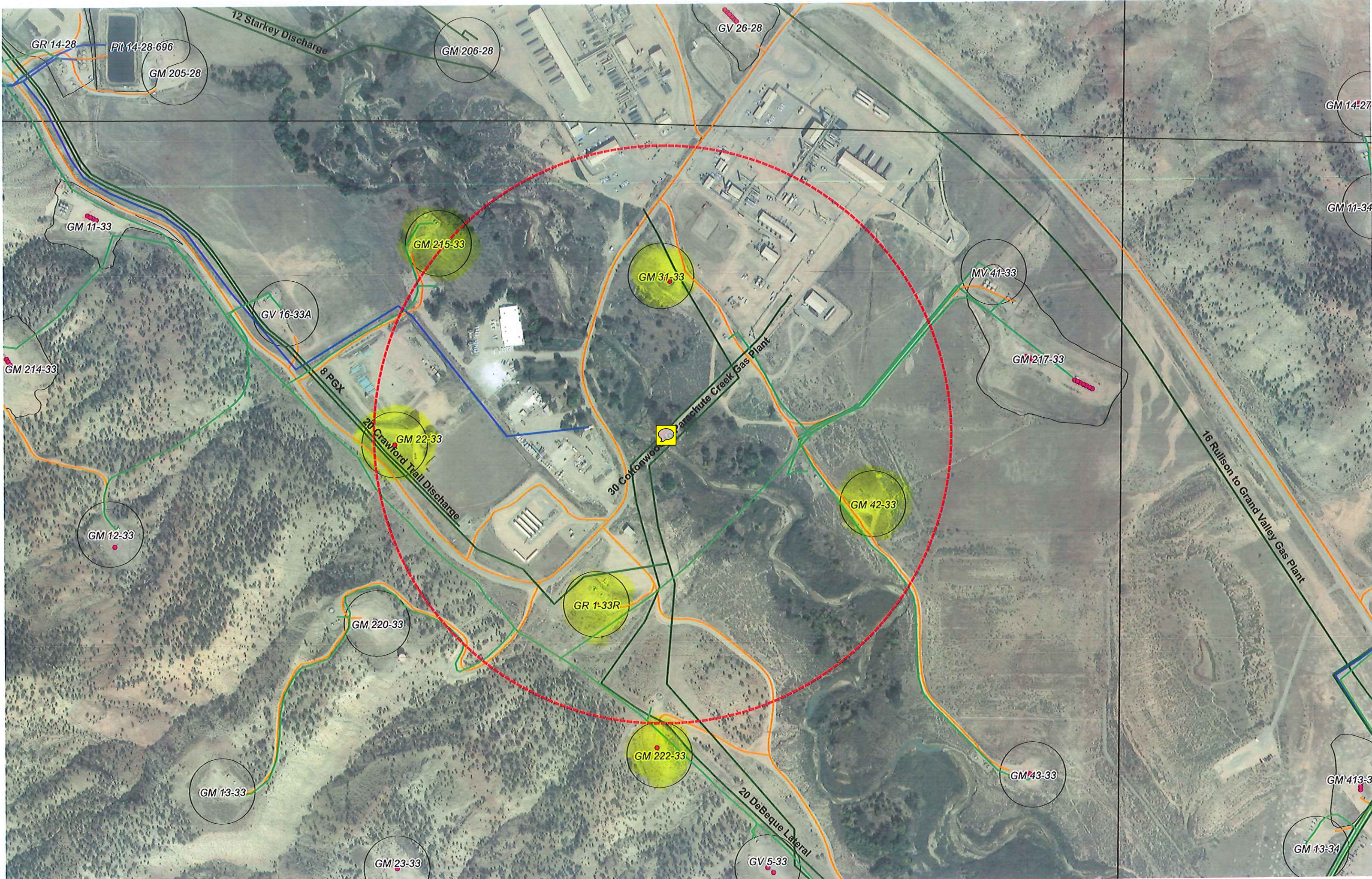


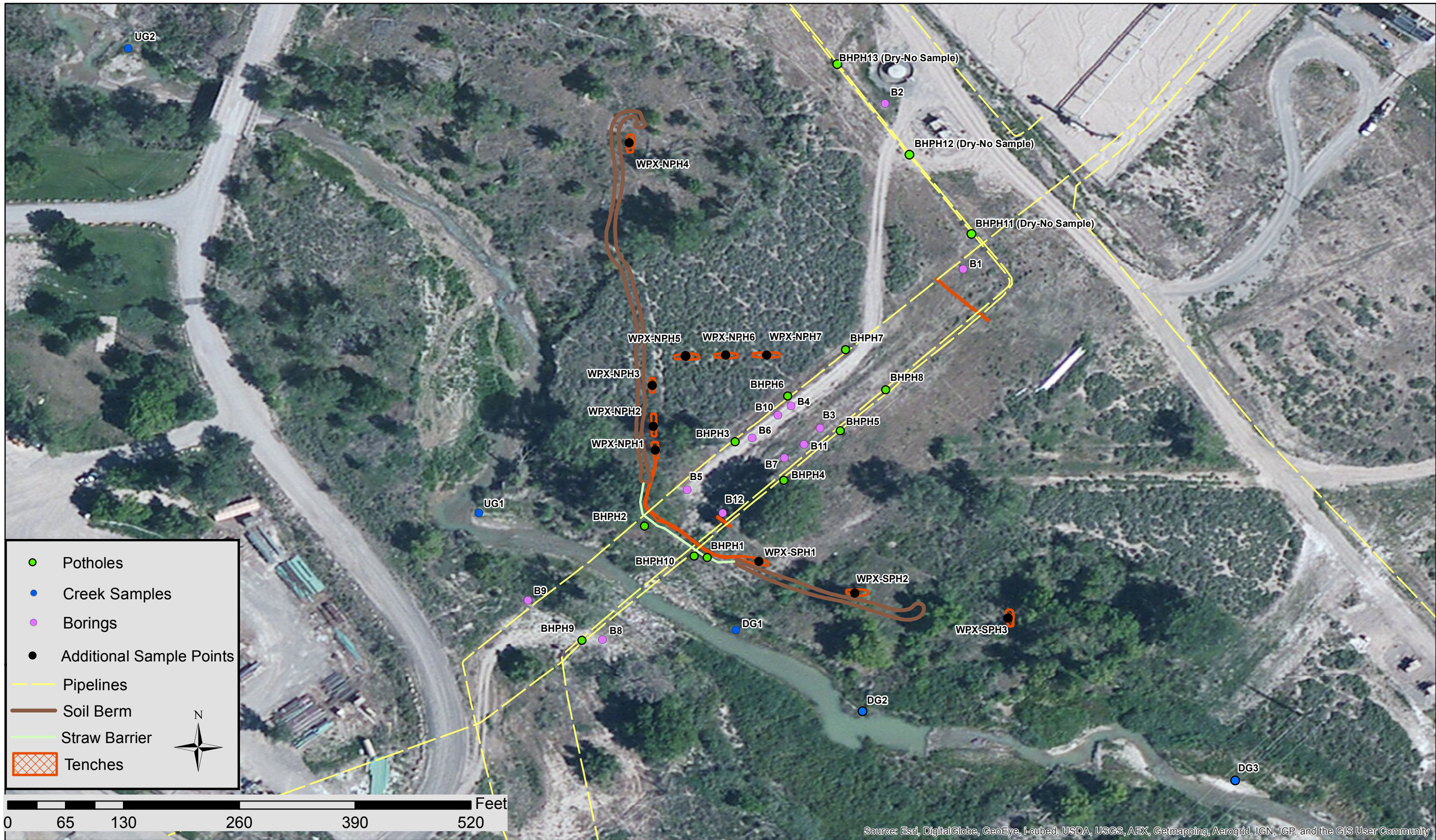
WPX Well Information.pdf
3973K

Information Requested by COGCC

March 22, 2013

					Production				
		Current Bradenhead Status	Bradenhead 7 day build up (psi)	Gradient at shoe (psi/ft)	Water (bpd) (no condensate tanks on Pads)		Sample Numbers	Location	API Gravity
GM 31-33	GM 31-33	Open		5	0.449		13-0271	Grand Valley Condensate (Composite)	54.30 Degree API
	GM 431-33	Open		0	0.433		D44266X-1	NGL product from Williams	68.16 Degree API
	GM 531-33	Open		0	0.443		13-0270	WPX-NPH1 Trench (impacted area)	66.80 Degree API
	GM 216-33	Open		0	0.433		4.4	D44266X-2	Williams' intial pothole (BHPH1)
GM 42-33	GM 42-33	Open		0	0.433	0.85			
GM 215-33	GM 206-28	Open		0	0.433				
	GM 215-33	Open		60	0.525	1			
GR 1-33	GR 1-33 R	Closed		22	0.453	1.02			
MV 16-33 (Prod Fac)	GM 22-33	Open		0	0.433	1.5			
GM 222-33	GM 222-33	Open		0	0.433				
	GM 433-33	Open		0	0.433	2.4			





F:/Projects/20050154/gis/maps.mxd

PROJECT:	
DRAWN BY: BFB	
DATE: March 20, 2013	

Williams
COGCC Incident 2232359
Garfield County, CO



OLSSON
ASSOCIATES

1111 Lincoln Mall, Suite 111
P.O. Box 84608
Lincoln, NE 68501-4608

TEL 402.474.6311
FAX 402.474.5190
www.olaconsulting.com