

WELL LOCATION PLAT T9N, R58W, 6th P.M.

NOBLE ENERGY, INC.

Well location, TIMBRO LD06-64HN (SURFACE LOCATION), located as shown in Lot 6 Section 6, T9N, R58W, 6th P.M., Weld County, Colorado.

BASIS OF ELEVATION

SPOT ELEVATION LOCATED AT THE NORTHEAST CORNER OF SECTION 15, T9N, R58W, 6th P.M. TAKEN FROM THE GATEHOOK SPRING, QUADRANGLE, COLORADO, WELD COUNTY, 7.5 MINUTE QUAD (TOPOGRAPHIC MAP) PUBLISHED BY THE UNITED STATES DEPARTMENT OF THE INTERIOR, GEOLOGICAL SURVEY. SAID ELEVATION IS MARKED AS BEING 4679 FEET.

BASIS OF BEARINGS

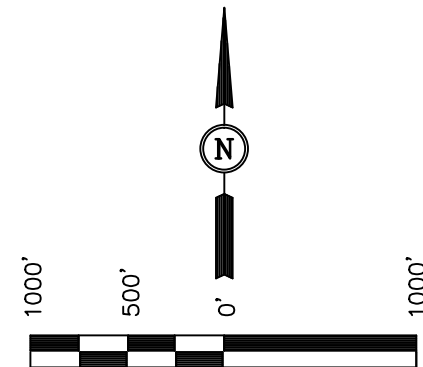
BASIS OF BEARINGS IS A G.P.S. OBSERVATION.

APPROVED

By tylerporter at 8:49 am, 3/7/13

NOTE:
SEE LOCATION DRAWING FOR
EXISTING IMPROVEMENTS WITHIN 400'
OF THE PROPOSED DISTURBANCE.

Target
Bottom
Hole



CERTIFICATE

THIS IS TO CERTIFY THAT THE ABOVE PLAT WAS PREPARED FROM FIELD NOTES OF ACTUAL SURVEYS MADE BY ME OR UNDER MY SUPERVISION AND THAT THE SAME ARE TRUE AND CORRECT TO THE BEST OF MY KNOWLEDGE AND BELIEF.

REGISTERED LAND SURVEYOR
REGISTRATION NO. 17492
STATE OF COLORADO

REVISED: 02-08-13 H.K.W.

UINTAH ENGINEERING & LAND SURVEYING
85 SOUTH 200 EAST - VERNAL, UTAH 84078
(435) 789-1017

SCALE 1" = 1000'	DATE SURVEYED: 09-06-12	DATE DRAWN: 10-16-12
PARTY JERREMY HARRIS C.M. S.R.L.	REFERENCES G.L.O. PLAT	
WEATHER WARM	FILE NOBLE ENERGY, INC.	

LEGEND:

- └─┘ = 90° SYMBOL
- = PROPOSED WELL HEAD.
- ▲ = SECTION CORNERS LOCATED.

FEATURE TABLE		
EXISTING FEATURE	DIRECTION	LENGTH
PROPERTY LINE	WEST	255'

PDOP = 1.2

NAD 83 (SURFACE LOCATION)
LATITUDE = 40°46'42.12" (40.778367)
LONGITUDE = 103°54'58.67" (103.916297)

WELL LOCATION PLAT T9N, R58W, 6th P.M.

NOBLE ENERGY, INC.

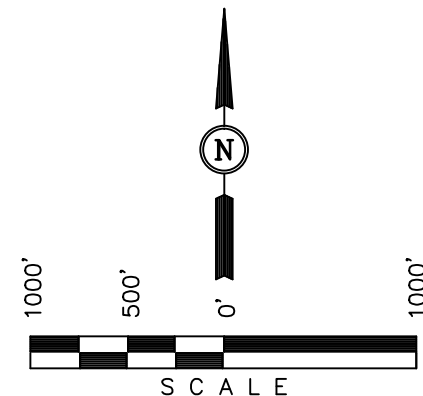
Well location, TIMBRO LD06-64HN (TARGET BOTTOM HOLE), located as shown in the NE 1/4, SE 1/4 of Section 5, T9N, R58W, 6th P.M., Weld County, Colorado.

BASIS OF ELEVATION

SPOT ELEVATION LOCATED AT THE NORTHEAST CORNER OF SECTION 15, T9N, R58W, 6th P.M. TAKEN FROM THE GATEHOOK SPRING, QUADRANGLE, COLORADO, WELD COUNTY, 7.5 MINUTE QUAD (TOPOGRAPHIC MAP) PUBLISHED BY THE UNITED STATES DEPARTMENT OF THE INTERIOR, GEOLOGICAL SURVEY. SAID ELEVATION IS MARKED AS BEING 4679 FEET.

BASIS OF BEARINGS

BASIS OF BEARINGS IS A G.P.S. OBSERVATION.



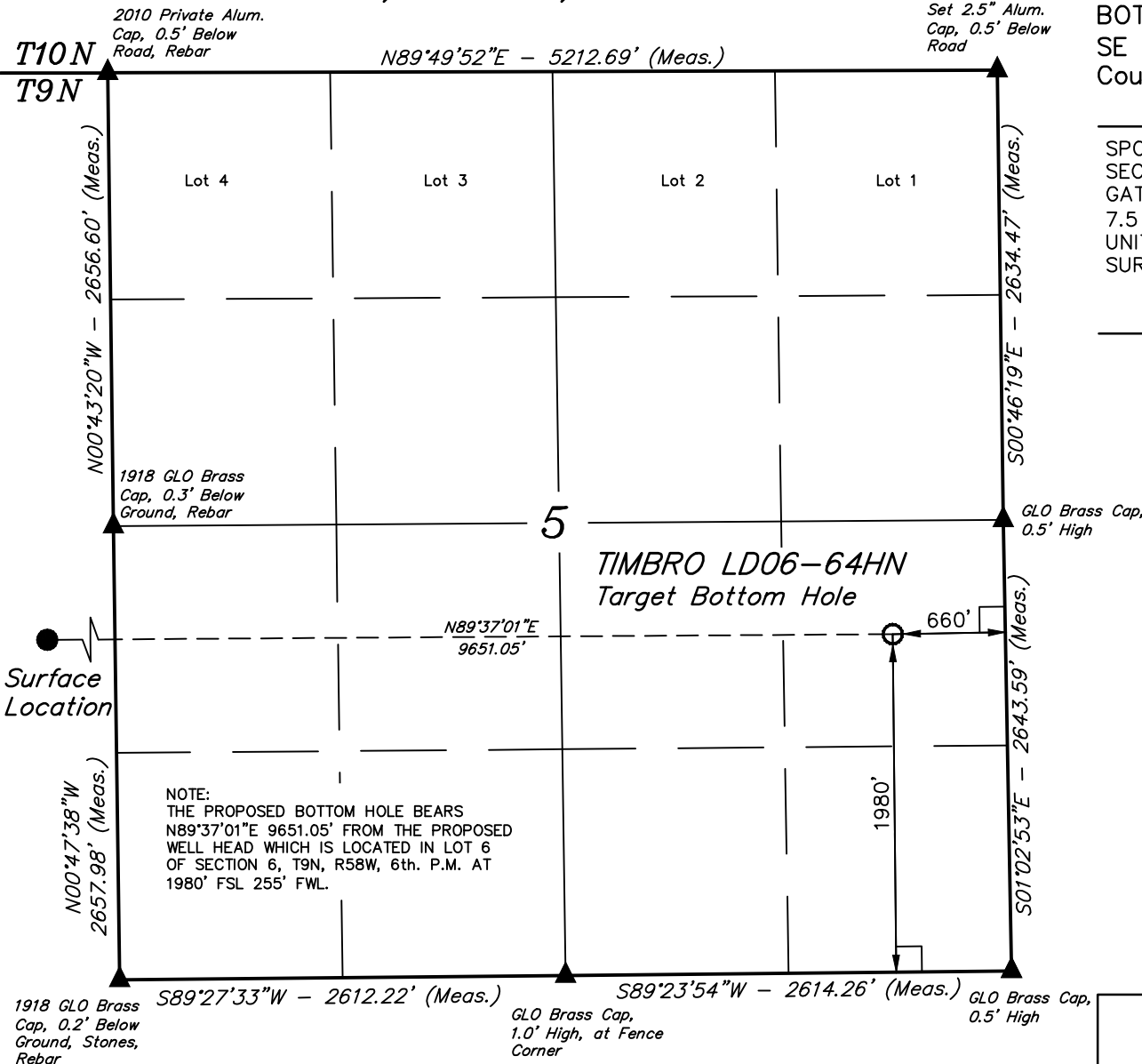
CERTIFICATE

THIS IS TO CERTIFY THAT THE ABOVE PLAT WAS PREPARED FROM FIELD NOTES OF ACTUAL SURVEYS MADE BY ME OR UNDER MY SUPERVISION AND THAT THE SAME ARE TRUE AND CORRECT TO THE BEST OF MY KNOWLEDGE AND BELIEF.

REGISTERED LAND SURVEYOR
REGISTRATION NO. 17492
STATE OF COLORADO

UINTAH ENGINEERING & LAND SURVEYING
85 SOUTH 200 EAST - VERNAL, UTAH 84078
(435) 789-1017

SCALE 1" = 1000'	DATE SURVEYED: 09-06-12	DATE DRAWN: 02-08-13
PARTY JERREMY HARRIS C.M. H.K.W.	REFERENCES G.L.O. PLAT	
WEATHER WARM	FILE	NOBLE ENERGY, INC.



LEGEND:

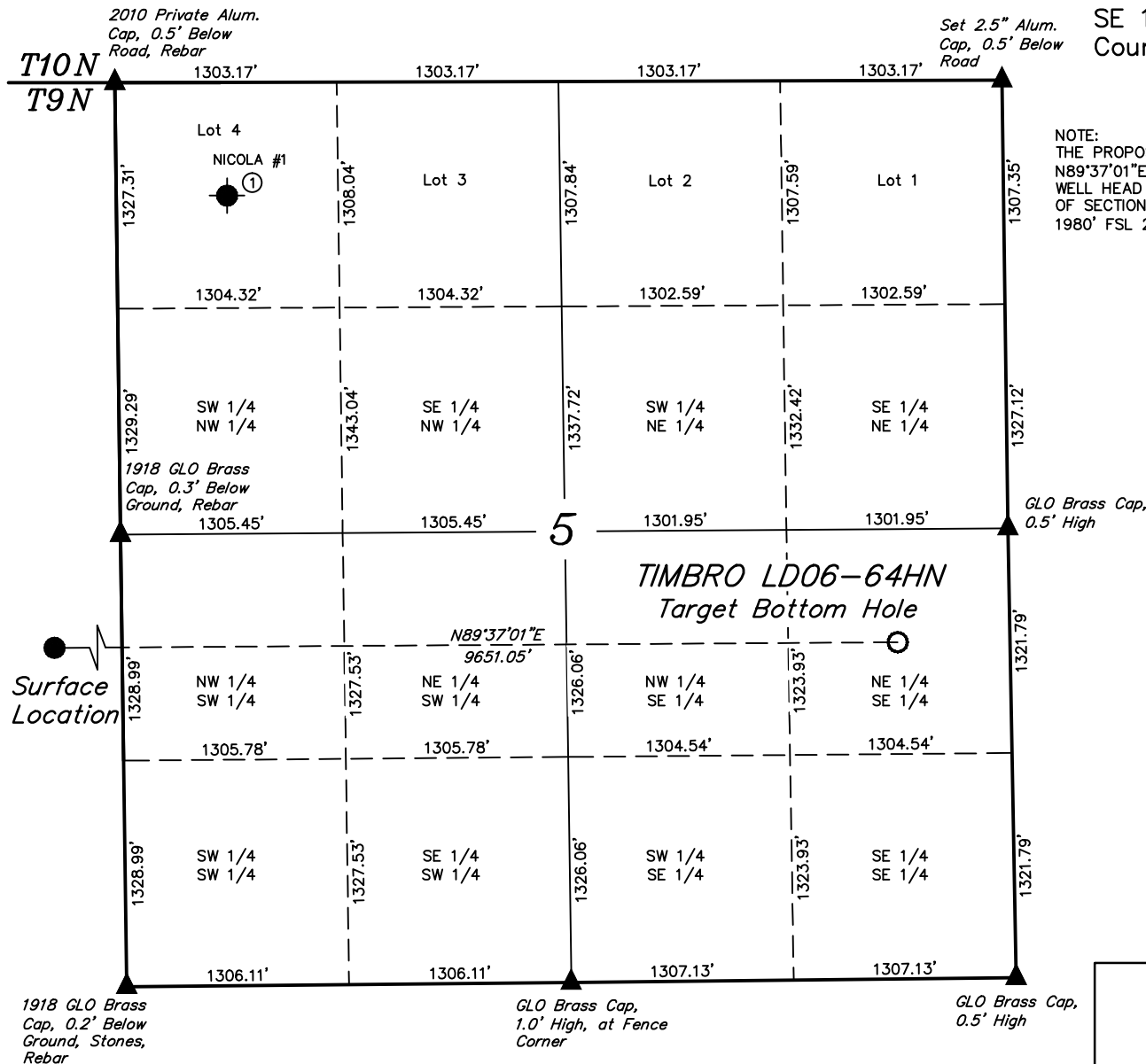
- └─┘ = 90° SYMBOL
- = PROPOSED WELL HEAD.
- ▲ = SECTION CORNERS LOCATED.

NAD 83 (TARGET BOTTOM HOLE)
LATITUDE = 40°46'42.82" (40.778561)
LONGITUDE = 103°52'53.25" (103.881458)

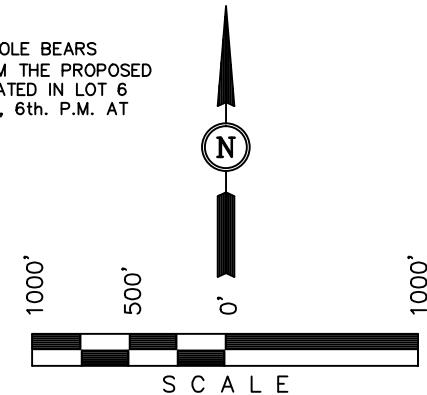
SITE SKETCH T9N, R58W, 6th P.M.

NOBLE ENERGY, INC.

Well location, TIMBRO LD06-64HN (TARGET BOTTOM HOLE), located as shown in the NE 1/4 SE 1/4 of Section 5, T9N, R58W, 6th P.M., Weld County, Colorado.



NOTE:
THE PROPOSED BOTTOM HOLE BEARS
N89°37'01"E 9651.05' FROM THE PROPOSED
WELL HEAD WHICH IS LOCATED IN LOT 6
OF SECTION 6, T9N, R58W, 6th. P.M. AT
1980' FSL 255' FWL.



LEGEND:

- = PROPOSED WELL HEAD.
- = TARGET BOTTOM HOLE.
- ▲ = SECTION CORNERS LOCATED.
- ⊙ = ABANDONED WELLS

UINTAH ENGINEERING & LAND SURVEYING
85 SOUTH 200 EAST - VERNAL, UTAH 84078
(435) 789-1017

SCALE 1" = 1000'	DATE SURVEYED: 09-06-12	DATE DRAWN: 02-08-13
PARTY JERREMY HARRIS C.M. H.K.W.	REFERENCES G.L.O. PLAT	
WEATHER WARM	FILE NOBLE ENERGY, INC.	

	WELL NAME	QTR-QTR	FOOTAGES	LATITUDE	LONGITUDE	ELEVATION	PDOP
1	NICOLA #1	LOT 4	FROM COGCC DATABASE	40.785594°	103.895877°	4,814'	N.A.