

DRILL STEM TEST REPORT

Prepared For: **Grand Mesa Operating Co.**

1700 N Waterfront Pkwy
BL 600
Wichita KS 67206

ATTN: Bob Schrieber

Punkin State #1-4

4-10s-55w Lincoln,CO

Start Date: 2013.02.24 @ 02:44:15

End Date: 2013.02.24 @ 14:04:30

Job Ticket #: 49040 DST #: 1

Trilobite Testing, Inc

PO Box 362 Hays, KS 67601

ph: 785-625-4778 fax: 785-625-5620

Printed: 2013.03.08 @ 11:36:56



TRILOBITE
TESTING, INC.

DRILL STEM TEST REPORT

Grand Mesa Operating Co.

4-10s-55w Lincoln, CO

1700 N Waterfront Pkwy
BL 600
Wichita KS 67206
ATTN: Bob Schrieber

Punkin State #1-4

Job Ticket: 49040

DST#: 1

Test Start: 2013.02.24 @ 02:44:15

GENERAL INFORMATION:

Formation: **Pawnee**

Deviated: No Whipstock: ft (KB)

Time Tool Opened: 06:50:45

Time Test Ended: 14:04:30

Test Type: Conventional Bottom Hole (Initial)

Tester: Mike Roberts

Unit No: 65

Interval: 7067.00 ft (KB) To 7094.00 ft (KB) (TVD)

Reference Elevations: 5287.00 ft (KB)

Total Depth: 7094.00 ft (KB) (TVD)

5277.00 ft (CF)

Hole Diameter: 7.88 inches Hole Condition: Fair

KB to GR/CF: 10.00 ft

Serial #: 8646 Inside

Press @ Run Depth: 144.76 psig @ 7069.00 ft (KB)

Capacity: 8000.00 psig

Start Date: 2013.02.24

End Date:

2013.02.24

Last Calib.: 2013.02.24

Start Time: 02:44:15

End Time:

14:04:30

Time On Btm: 2013.02.24 @ 06:46:45

Time Off Btm: 2013.02.24 @ 10:35:15

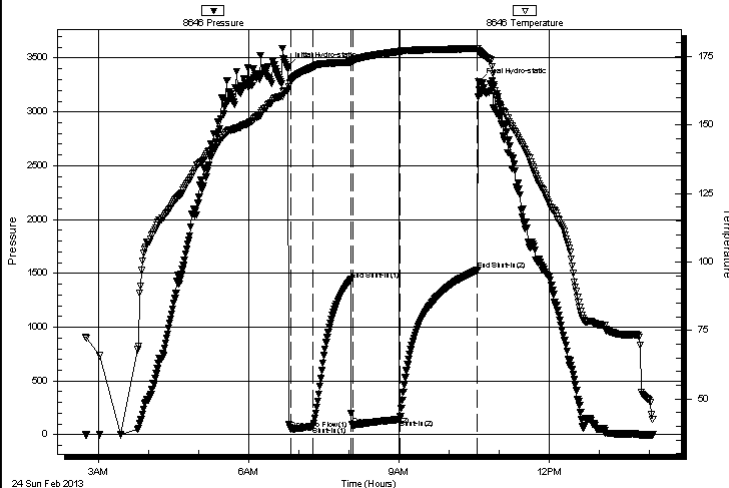
TEST COMMENT: IF:BOB in 45 seconds

IS:No return blow

FF:BOB in 45 seconds gas to surface in 40 min.

FS:Return blow built to BOB in 38 min.

Pressure vs. Time



PRESSURE SUMMARY

Time (Min.)	Pressure (psig)	Temp (deg F)	Annotation
0	3417.41	162.74	Initial Hydro-static
4	53.69	166.52	Open To Flow (1)
30	77.54	171.18	Shut-In(1)
76	1442.40	172.94	End Shut-In(1)
78	91.73	173.27	Open To Flow (2)
134	144.76	176.89	Shut-In(2)
227	1529.57	177.99	End Shut-In(2)
229	3276.44	176.98	Final Hydro-static

Recovery

Length (ft)	Description	Volume (bbl)
0.00	GIP= 6580	0.00
124.00	ocgm 5%o 15%g 80%m	0.61
94.00	ocmg 10%o 10% m 80%g	0.46
188.00	gcmw 20%g 20%m 60%w	0.92

Gas Rates

	Choke (inches)	Pressure (psig)	Gas Rate (Mcf/d)
--	----------------	-----------------	------------------



TRILOBITE
TESTING, INC.

DRILL STEM TEST REPORT

Grand Mesa Operating Co.

4-10s-55w Lincoln, CO

1700 N Waterfront Pkwy
BL 600
Wichita KS 67206
ATTN: Bob Schrieber

Punkin State #1-4

Job Ticket: 49040

DST#: 1

Test Start: 2013.02.24 @ 02:44:15

GENERAL INFORMATION:

Formation: **Pawnee**

Deviated: No Whipstock: ft (KB)

Time Tool Opened: 06:50:45

Time Test Ended: 14:04:30

Test Type: Conventional Bottom Hole (Initial)

Tester: Mike Roberts

Unit No: 65

Interval: 7067.00 ft (KB) To 7094.00 ft (KB) (TVD)

Reference Elevations: 5287.00 ft (KB)

Total Depth: 7094.00 ft (KB) (TVD)

5277.00 ft (CF)

Hole Diameter: 7.88 inches Hole Condition: Fair

KB to GR/CF: 10.00 ft

Serial #: 8365 Outside

Press @ Run Depth: psig @ 7069.00 ft (KB)

Capacity: 8000.00 psig

Start Date: 2013.02.24

End Date:

2013.02.24

Last Calib.:

1899.12.30

Start Time: 02:44:15

End Time:

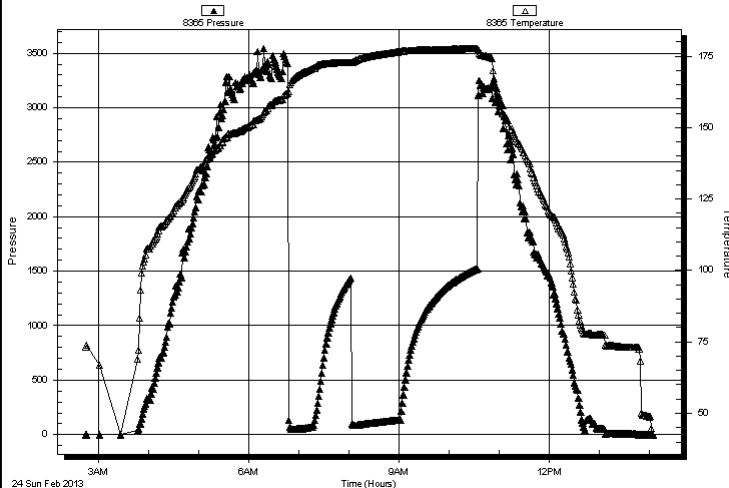
14:04:30

Time On Btm:

Time Off Btm:

TEST COMMENT: IF:BOB in 45 seconds
IS:No return blow
FF:BOB in 45 seconds gas to surface in 40 min.
FS:Return blow built to BOB in 38 min.

Pressure vs. Time



PRESSURE SUMMARY

Time (Min.)	Pressure (psig)	Temp (deg F)	Annotation
-------------	-----------------	--------------	------------

Recovery

Length (ft)	Description	Volume (bbl)
0.00	GIP= 6580	0.00
124.00	ocgm 5%o 15%g 80%m	0.61
94.00	ocmg 10%o 10% m 80%g	0.46
188.00	gcmw 20%g 20%m 60%w	0.92

Gas Rates

	Choke (inches)	Pressure (psig)	Gas Rate (Mcf/d)
--	----------------	-----------------	------------------



TRILOBITE
TESTING, INC.

DRILL STEM TEST REPORT

TOOL DIAGRAM

Grand Mesa Operating Co.

4-10s-55w Lincoln, CO

1700 N Waterfront Pkwy
BL 600
Wichita KS 67206
ATTN: Bob Schrieber

Punkin State #1-4

Job Ticket: 49040

DST#: 1

Test Start: 2013.02.24 @ 02:44:15

Tool Information

Drill Pipe:	Length:	7046.00 ft	Diameter:	2.25 inches	Volume:	34.65 bbl	Tool Weight:	1500.00 lb
Heavy Wt. Pipe:	Length:	0.00 ft	Diameter:	0.00 inches	Volume:	0.00 bbl	Weight set on Packer:	20000.00 lb
Drill Collar:	Length:	0.00 ft	Diameter:	0.00 inches	Volume:	0.00 bbl	Weight to Pull Loose:	90000.00 lb
					Total Volume:	34.65 bbl	Tool Chased	0.00 ft
Drill Pipe Above KB:		7.00 ft					String Weight: Initial	70000.00 lb
Depth to Top Packer:		7067.00 ft					Final	72000.00 lb
Depth to Bottom Packer:		ft						
Interval between Packers:		27.00 ft						
Tool Length:		55.00 ft						
Number of Packers:		2	Diameter:	6.75 inches				
Tool Comments:								

Tool Description	Length (ft)	Serial No.	Position	Depth (ft)	Accum. Lengths
------------------	-------------	------------	----------	------------	----------------

Change Over Sub	1.00			7040.00	
Shut In Tool	5.00			7045.00	
Hydraulic tool	5.00			7050.00	
Jars	5.00			7055.00	
Safety Joint	3.00			7058.00	
Packer	5.00			7063.00	28.00 Bottom Of Top Packer
Packer	4.00			7067.00	
Stubb	1.00			7068.00	
Perforations	1.00			7069.00	
Recorder	0.00	8646	Inside	7069.00	
Recorder	0.00	8365	Outside	7069.00	
Perforations	20.00			7089.00	
Bullnose	5.00			7094.00	27.00 Bottom Packers & Anchor

Total Tool Length: 55.00



TRILOBITE
TESTING, INC.

DRILL STEM TEST REPORT

FLUID SUMMARY

Grand Mesa Operating Co.

4-10s-55w Lincoln, CO

1700 N Waterfront Pkwy
BL 600
Wichita KS 67206
ATTN: Bob Schrieber

Punkin State #1-4

Job Ticket: 49040

DST#: 1

Test Start: 2013.02.24 @ 02:44:15

Mud and Cushion Information

Mud Type: Gel Chem

Mud Weight: 9.00 lb/gal

Viscosity: 60.00 sec/qt

Water Loss: 6.35 in³

Resistivity: 0.00 ohm.m

Salinity: 300.00 ppm

Filter Cake: 1.00 inches

Cushion Type:

Cushion Length:

Cushion Volume:

Gas Cushion Type:

Gas Cushion Pressure:

ft

bbl

psig

Oil API:

0 deg API

Water Salinity:

53000 ppm

Recovery Information

Recovery Table

Length ft	Description	Volume bbl
0.00	GIP= 6580	0.000
124.00	ocgm 5%o 15%g 80%m	0.610
94.00	ocmg 10%o 10% m 80%g	0.462
188.00	gcmw 20%g 20%m 60%w	0.925

Total Length: 406.00 ft

Total Volume: 1.997 bbl

Num Fluid Samples: 0

Num Gas Bombs: 0

Serial #:

Laboratory Name:

Laboratory Location:

Recovery Comments: RW= .201 @ 56.8*=53,000ppm

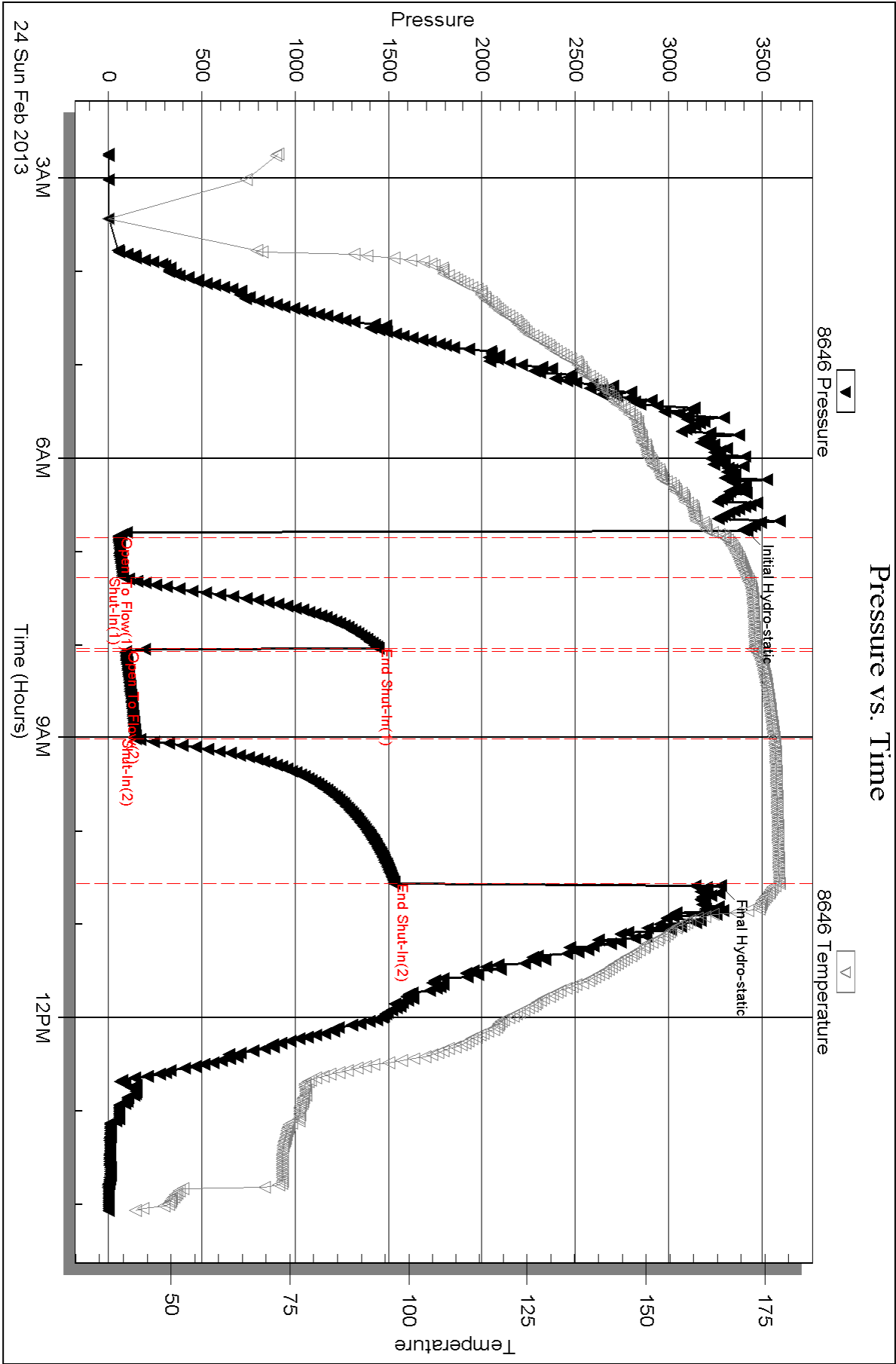
Serial #: 8646

Inside

Grand Mesa Operating Co.

Punkin State #1-4

DST Test Number: 1

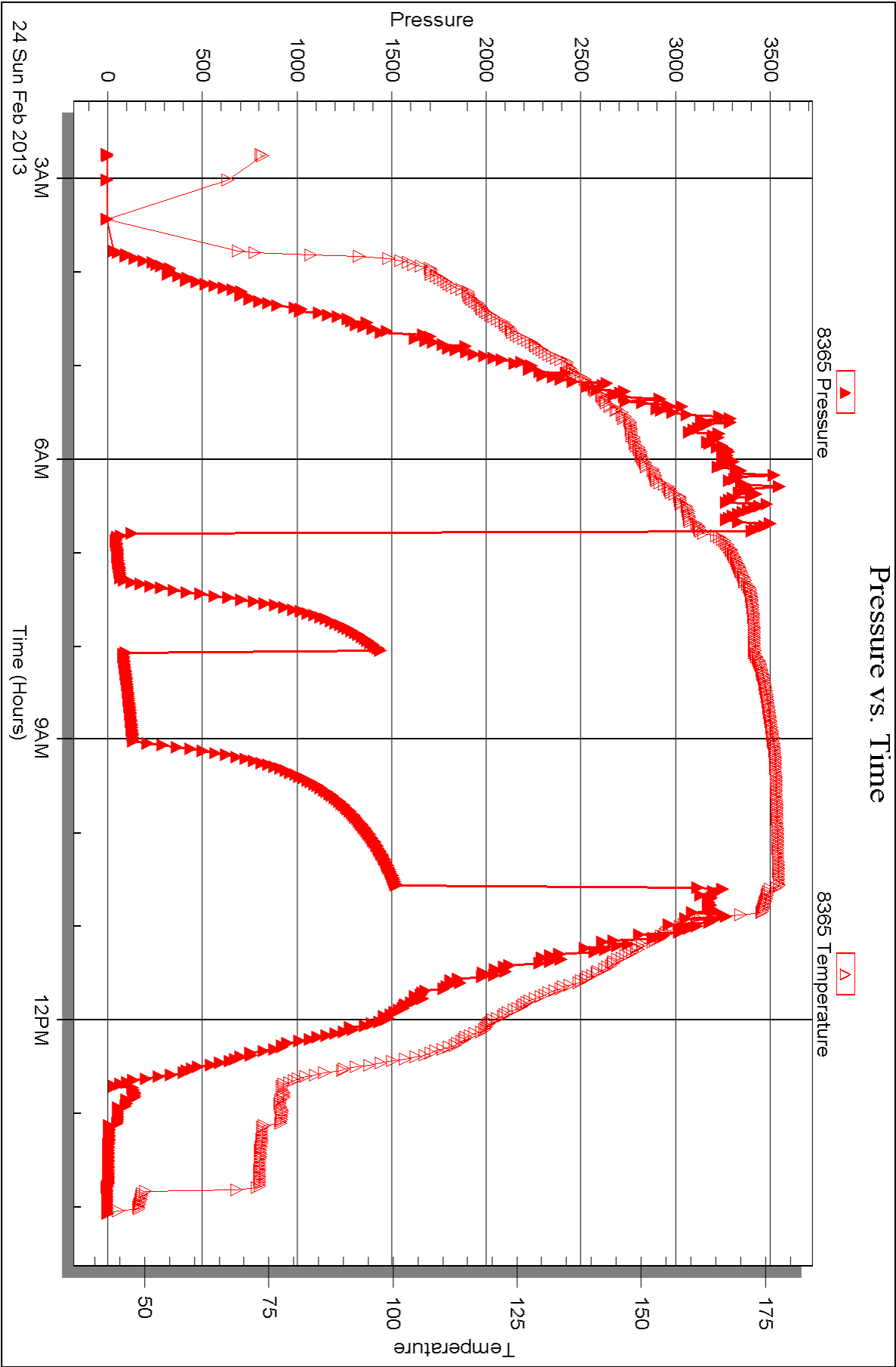


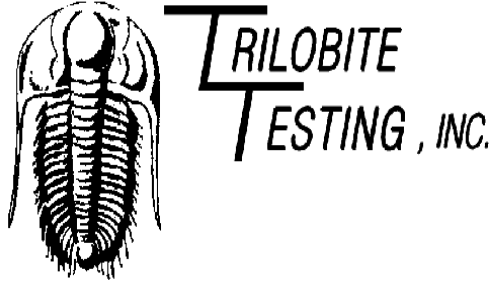
Serial #: 8365

Outside Grand Mesa Operating Co.

Punkin State #1-4

DST Test Number: 1





DRILL STEM TEST REPORT

Prepared For: **Grand Mesa Operating Co.**

1700 N Waterfront Pkwy
BL 600
Wichita KS 67206

ATTN: Bob Schrieber

Punkin State #1-4

4-10s-55w Lincoln,CO

Start Date: 2013.02.25 @ 07:53:15

End Date: 2013.02.25 @ 19:18:45

Job Ticket #: 49041 DST #: 2

Trilobite Testing, Inc

PO Box 362 Hays, KS 67601

ph: 785-625-4778 fax: 785-625-5620

Printed: 2013.03.08 @ 11:36:21

Grand Mesa Operating Co.

4-10s-55w Lincoln,CO

Punkin State #1-4

DST # 2

Upper and lower Ft.

2013.02.25



TRILOBITE
TESTING, INC.

DRILL STEM TEST REPORT

Grand Mesa Operating Co.

4-10s-55w Lincoln, CO

1700 N Waterfront Pkwy
BL 600
Wichita KS 67206
ATTN: Bob Schrieber

Punkin State #1-4

Job Ticket: 49041

DST#: 2

Test Start: 2013.02.25 @ 07:53:15

GENERAL INFORMATION:

Formation: **Upper and lower Ft.**

Deviated: No Whipstock: ft (KB)

Time Tool Opened: 11:32:30

Time Test Ended: 19:18:45

Test Type: Conventional Bottom Hole (Reset)

Tester: Mike Roberts

Unit No: 65

Interval: 7108.00 ft (KB) To 7180.00 ft (KB) (TVD)

Reference Elevations: 5287.00 ft (KB)

Total Depth: 7180.00 ft (KB) (TVD)

5277.00 ft (CF)

Hole Diameter: 7.88 inches Hole Condition: Fair

KB to GR/CF: 10.00 ft

Serial #: 8846 Inside

Press @ Run Depth: 18.78 psig @ 7109.00 ft (KB)

Capacity: 8000.00 psig

Start Date: 2013.02.25

End Date:

2013.02.25

Last Calib.: 2013.02.25

Start Time: 07:53:15

End Time:

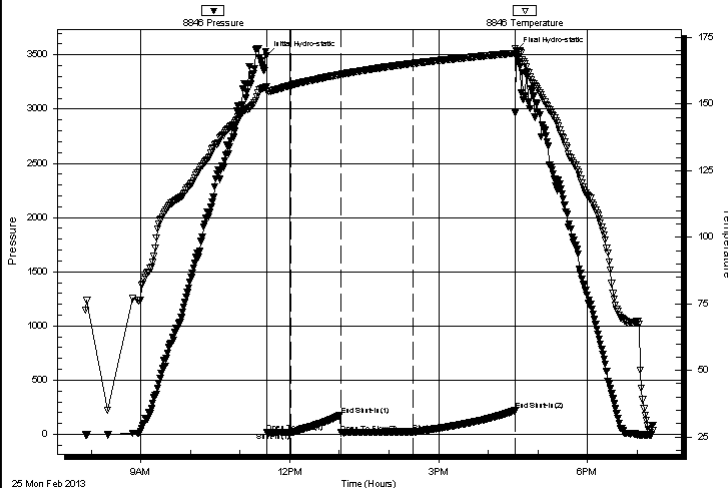
19:18:45

Time On Btm: 2013.02.25 @ 11:32:15

Time Off Btm: 2013.02.25 @ 16:33:45

TEST COMMENT: IF: Built to 3" blow
IS: No return blow
FF: Built to 4" blow
FS: No return blow

Pressure vs. Time



PRESSURE SUMMARY

Time (Min.)	Pressure (psig)	Temp (deg F)	Annotation
0	3495.55	156.43	Initial Hydro-static
1	19.81	155.16	Open To Flow (1)
30	16.20	157.06	Shut-In(1)
89	175.92	161.12	End Shut-In(1)
90	14.07	161.13	Open To Flow (2)
177	18.78	165.26	Shut-In(2)
300	218.70	169.10	End Shut-In(2)
302	3534.41	168.57	Final Hydro-static

Recovery

Length (ft)	Description	Volume (bbl)
15.00	mud 100% m	0.07

Gas Rates

	Choke (inches)	Pressure (psig)	Gas Rate (Mcf/d)
--	----------------	-----------------	------------------

* Recovery from multiple tests



TRILOBITE
TESTING, INC.

DRILL STEM TEST REPORT

Grand Mesa Operating Co.

4-10s-55w Lincoln, CO

1700 N Waterfront Pkw y
BL 600
Wichita KS 67206
ATTN: Bob Schrieber

Punkin State #1-4

Job Ticket: 49041

DST#: 2

Test Start: 2013.02.25 @ 07:53:15

GENERAL INFORMATION:

Formation: **Upper and lower Ft.**

Deviated: No Whipstock: ft (KB)

Time Tool Opened: 11:32:30

Time Test Ended: 19:18:45

Test Type: Conventional Bottom Hole (Reset)

Tester: Mike Roberts

Unit No: 65

Interval: 7108.00 ft (KB) To 7180.00 ft (KB) (TVD)

Reference Elevations: 5287.00 ft (KB)

Total Depth: 7180.00 ft (KB) (TVD)

5277.00 ft (CF)

Hole Diameter: 7.88 inches Hole Condition: Fair

KB to GR/CF: 10.00 ft

Serial #: 8365 Outside

Press @ Run Depth: psig @ 7109.00 ft (KB)

Capacity: 8000.00 psig

Start Date: 2013.02.25

End Date:

2013.02.25

Last Calib.:

2013.02.25

Start Time: 07:53:15

End Time:

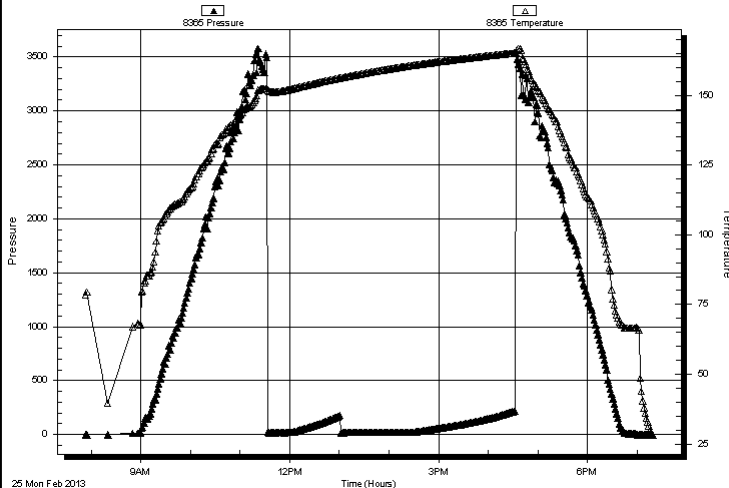
19:18:45

Time On Btm:

Time Off Btm:

TEST COMMENT: IF: Built to 3" blow
IS: No return blow
FF: Built to 4" blow
FS: No return blow

Pressure vs. Time



PRESSURE SUMMARY

Time (Min.)	Pressure (psig)	Temp (deg F)	Annotation
-------------	-----------------	--------------	------------

Recovery

Length (ft)	Description	Volume (bbl)
15.00	mud 100% m	0.07

Gas Rates

	Choke (inches)	Pressure (psig)	Gas Rate (Mcf/d)
--	----------------	-----------------	------------------

* Recovery from multiple tests



TRILOBITE
TESTING, INC.

DRILL STEM TEST REPORT

TOOL DIAGRAM

Grand Mesa Operating Co.

4-10s-55w Lincoln, CO

1700 N Waterfront Pkwy
BL 600
Wichita KS 67206
ATTN: Bob Schrieber

Punkin State #1-4

Job Ticket: 49041

DST#: 2

Test Start: 2013.02.25 @ 07:53:15

Tool Information

Drill Pipe:	Length:	7097.00 ft	Diameter:	2.25 inches	Volume:	34.90 bbl	Tool Weight:	1500.00 lb
Heavy Wt. Pipe:	Length:	0.00 ft	Diameter:	0.00 inches	Volume:	0.00 bbl	Weight set on Packer:	25000.00 lb
Drill Collar:	Length:	0.00 ft	Diameter:	0.00 inches	Volume:	0.00 bbl	Weight to Pull Loose:	90000.00 lb
					Total Volume:	34.90 bbl	Tool Chased	0.00 ft
Drill Pipe Above KB:		17.00 ft					String Weight: Initial	70000.00 lb
Depth to Top Packer:		7108.00 ft					Final	71000.00 lb
Depth to Bottom Packer:		ft						
Interval between Packers:		72.00 ft						
Tool Length:		100.00 ft						
Number of Packers:		2	Diameter:	6.75 inches				
Tool Comments:								

Tool Description

Length (ft) Serial No. Position Depth (ft) Accum. Lengths

Change Over Sub	1.00			7081.00		
Shut In Tool	5.00			7086.00		
Hydraulic tool	5.00			7091.00		
Jars	5.00			7096.00		
Safety Joint	3.00			7099.00		
Packer	5.00			7104.00	28.00	Bottom Of Top Packer
Packer	4.00			7108.00		
Stubb	1.00			7109.00		
Recorder	0.00	8846	Inside	7109.00		
Recorder	0.00	8365	Outside	7109.00		
Perforations	1.00			7110.00		
Change Over Sub	1.00			7111.00		
Drill Pipe	63.00			7174.00		
Change Over Sub	1.00			7175.00		
Bullnose	5.00			7180.00	72.00	Bottom Packers & Anchor

Total Tool Length: 100.00



TRILOBITE
TESTING, INC.

DRILL STEM TEST REPORT

FLUID SUMMARY

Grand Mesa Operating Co.

4-10s-55w Lincoln, CO

1700 N Waterfront Pkwy
BL 600
Wichita KS 67206
ATTN: Bob Schrieber

Punkin State #1-4

Job Ticket: 49041

DST#: 2

Test Start: 2013.02.25 @ 07:53:15

Mud and Cushion Information

Mud Type: Gel Chem

Mud Weight: 9.00 lb/gal

Viscosity: 64.00 sec/qt

Water Loss: 7.17 in³

Resistivity: 0.00 ohm.m

Salinity: 300.00 ppm

Filter Cake: 1.00 inches

Cushion Type:

Cushion Length:

Cushion Volume:

Gas Cushion Type:

Gas Cushion Pressure:

ft

bbl

psig

Oil API:

Water Salinity:

0 deg API

0 ppm

Recovery Information

Recovery Table

Length ft	Description	Volume bbl
15.00	mud 100%m	0.074

Total Length: 15.00 ft

Total Volume: 0.074 bbl

Num Fluid Samples: 0

Num Gas Bombs: 0

Serial #:

Laboratory Name:

Laboratory Location:

Recovery Comments:

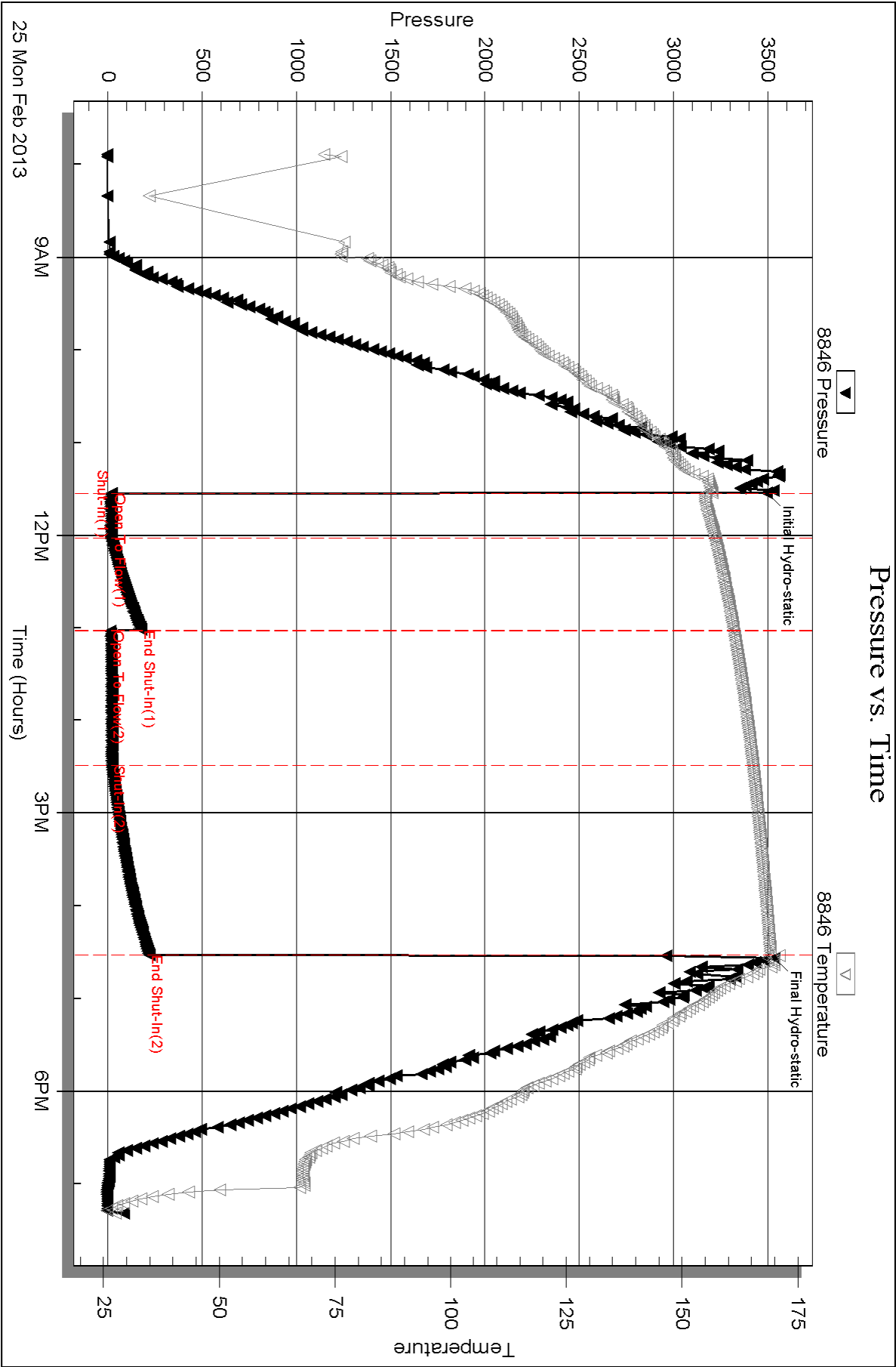
Serial #: 8846

Inside

Grand Mesa Operating Co.

Punkin State #1-4

DST Test Number: 2

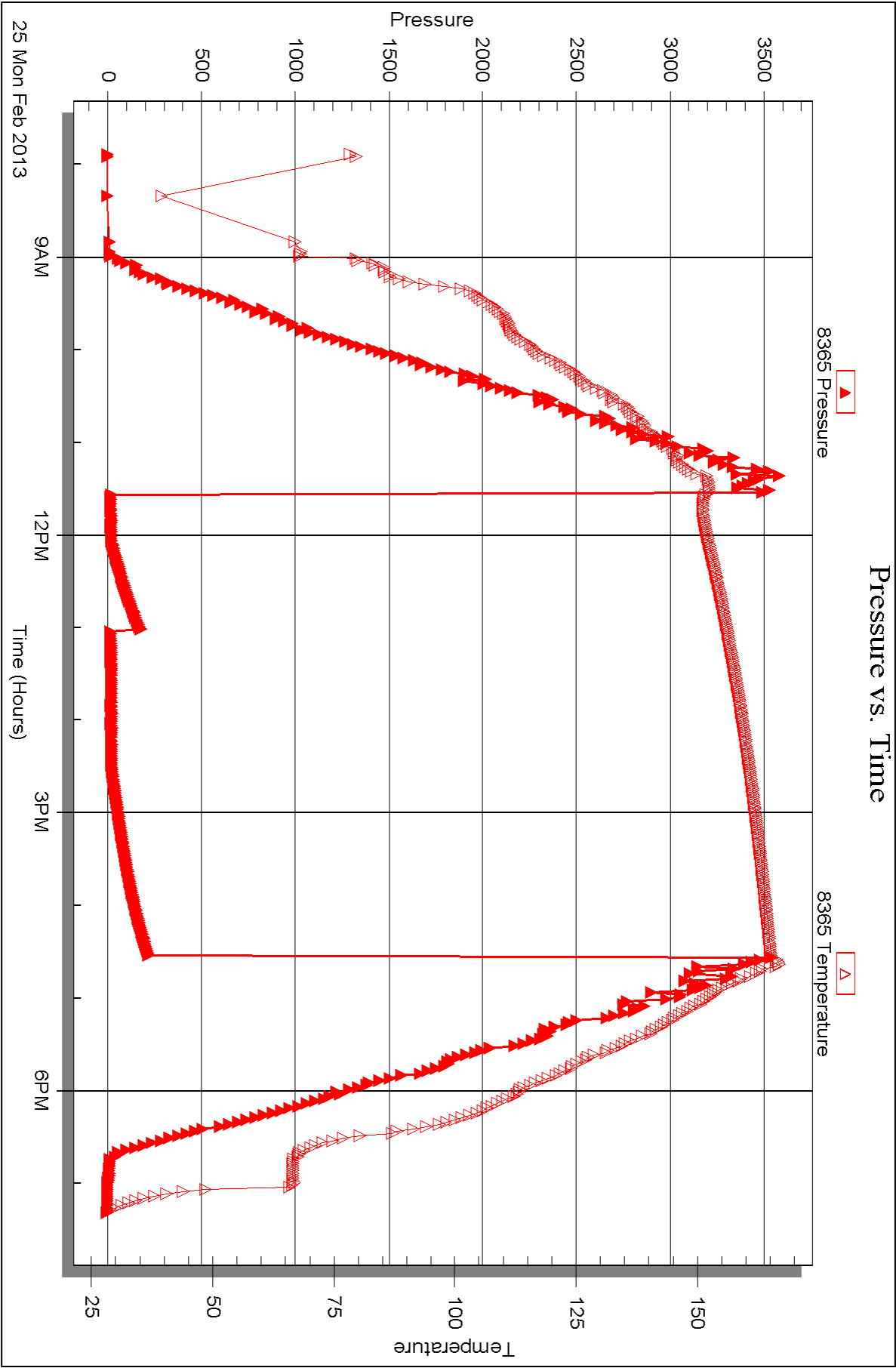


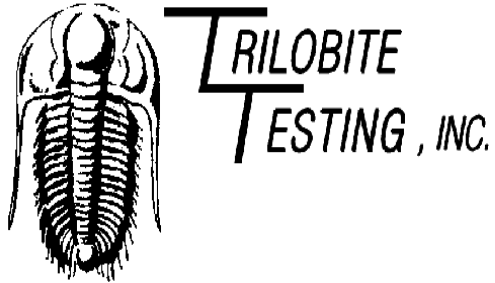
Serial #: 8365

Outside Grand Mesa Operating Co.

Punkin State #1-4

DST Test Number: 2





DRILL STEM TEST REPORT

Prepared For: **Grand Mesa Operating Co.**

1700 N Waterfront Pkwy
BL 600
Wichita KS 67206

ATTN: Bob Schrieber

Punkin State #1-4

4-10s-55w Lincoln,CO

Start Date: 2013.02.26 @ 18:20:15

End Date: 2013.02.26 @ 20:14:45

Job Ticket #: 49042 DST #: 3

Trilobite Testing, Inc

PO Box 362 Hays, KS 67601

ph: 785-625-4778 fax: 785-625-5620

Printed: 2013.03.08 @ 11:35:17



TRILOBITE
TESTING, INC.

DRILL STEM TEST REPORT

Grand Mesa Operating Co.

4-10s-55w Lincoln, CO

1700 N Waterfront Pkw y
BL 600
Wichita KS 67206
ATTN: Bob Schrieber

Punkin State #1-4

Job Ticket: 49042

DST#: 3

Test Start: 2013.02.26 @ 18:20:15

GENERAL INFORMATION:

Formation: **Vertigris & Krebs**

Deviated: No Whipstock: ft (KB)

Time Tool Opened:

Time Test Ended: 20:14:45

Test Type: Conventional Bottom Hole (Reset)

Tester: Mike Roberts

Unit No: 65

Interval: 7182.00 ft (KB) To 7289.00 ft (KB) (TVD)

Total Depth: 7289.00 ft (KB) (TVD)

Hole Diameter: 7.88 inches Hole Condition: Fair

Reference Elevations: 5287.00 ft (KB)

5277.00 ft (CF)

KB to GR/CF: 10.00 ft

Serial #: 8365 Outside

Press @ Run Depth: psig @ 7183.00 ft (KB)

Start Date: 2013.02.26

End Date:

2013.02.26

Start Time: 19:30:00

End Time:

21:24:30

Capacity: 8000.00 psig

Last Calib.: 2013.02.26

Time On Btm: 2013.02.26 @ 20:42:00

Time Off Btm: 2013.02.26 @ 20:44:00

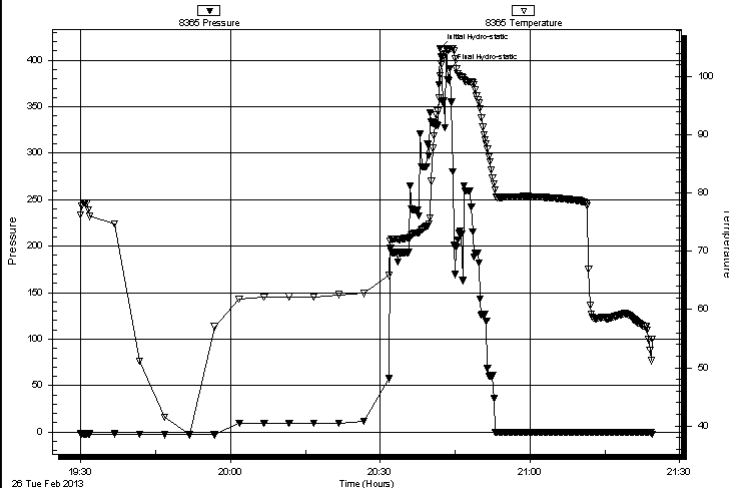
TEST COMMENT: IF: BRIDGE

IS:

FF:

FS:

Pressure vs. Time



PRESSURE SUMMARY

Time (Min.)	Pressure (psig)	Temp (deg F)	Annotation
0	412.39	100.19	Initial Hydro-static
2	391.16	104.77	Final Hydro-static

Recovery

Length (ft)	Description	Volume (bbl)
0.00	bridge	0.00

Gas Rates

	Choke (inches)	Pressure (psig)	Gas Rate (Mcf/d)
--	----------------	-----------------	------------------

* Recovery from multiple tests



**TRILOBITE
TESTING, INC.**

DRILL STEM TEST REPORT

Grand Mesa Operating Co.

4-10s-55w Lincoln, CO

1700 N Waterfront Pkwy
BL 600
Wichita KS 67206
ATTN: Bob Schrieber

Punkin State #1-4

Job Ticket: 49042

DST#: 3

Test Start: 2013.02.26 @ 18:20:15

GENERAL INFORMATION:

Formation: **Vertigris & Krebs**

Deviated: No Whipstock: ft (KB)

Time Tool Opened:

Time Test Ended: 20:14:45

Test Type: Conventional Bottom Hole (Reset)

Tester: Mike Roberts

Unit No: 65

Interval: 7182.00 ft (KB) To 7289.00 ft (KB) (TVD)

Total Depth: 7289.00 ft (KB) (TVD)

Hole Diameter: 7.88 inches Hole Condition: Fair

Reference Elevations: 5287.00 ft (KB)

5277.00 ft (CF)

KB to GR/CF: 10.00 ft

Serial #: 8646 Inside

Press @ Run Depth: psig @ 7183.00 ft (KB)

Start Date: 2013.02.26

End Date:

2013.02.26

Start Time: 19:30:15

End Time:

21:24:45

Capacity: 8000.00 psig

Last Calib.:

2013.02.26

Time On Btm:

Time Off Btm:

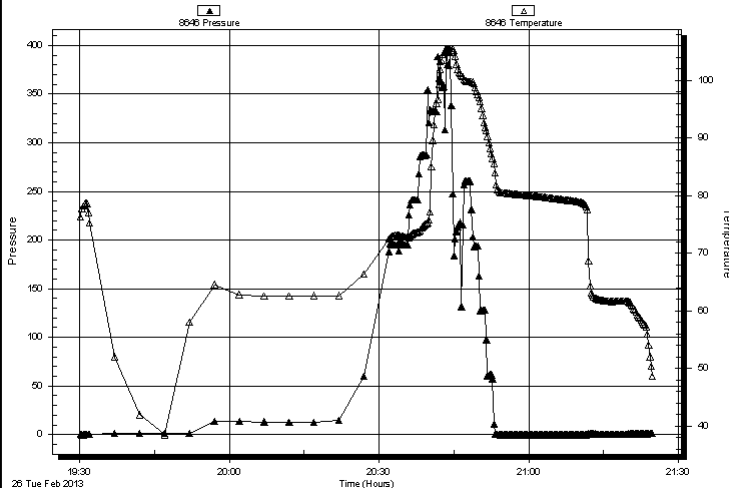
TEST COMMENT: IF: BRIDGE

IS:

FF:

FS:

Pressure vs. Time



PRESSURE SUMMARY

Time (Min.)	Pressure (psig)	Temp (deg F)	Annotation
-------------	-----------------	--------------	------------

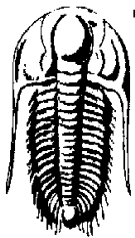
Recovery

Length (ft)	Description	Volume (bbl)
0.00	bridge	0.00

Gas Rates

	Choke (inches)	Pressure (psig)	Gas Rate (Mcf/d)
--	----------------	-----------------	------------------

* Recovery from multiple tests



TRILOBITE
TESTING, INC.

DRILL STEM TEST REPORT

TOOL DIAGRAM

Grand Mesa Operating Co.

4-10s-55w Lincoln, CO

1700 N Waterfront Pkwy
BL 600
Wichita KS 67206
ATTN: Bob Schrieber

Punkin State #1-4

Job Ticket: 49042

DST#: 3

Test Start: 2013.02.26 @ 18:20:15

Tool Information

Drill Pipe:	Length:	7161.00 ft	Diameter:	2.25 inches	Volume:	35.22 bbl	Tool Weight:	1500.00 lb
Heavy Wt. Pipe:	Length:	0.00 ft	Diameter:	0.00 inches	Volume:	0.00 bbl	Weight set on Packer:	0.00 lb
Drill Collar:	Length:	0.00 ft	Diameter:	0.00 inches	Volume:	0.00 bbl	Weight to Pull Loose:	14000.00 lb
					Total Volume:	35.22 bbl	Tool Chased	0.00 ft
Drill Pipe Above KB:		7.00 ft					String Weight: Initial	14000.00 lb
Depth to Top Packer:		7182.00 ft					Final	14000.00 lb
Depth to Bottom Packer:		ft						
Interval between Packers:		107.00 ft						
Tool Length:		135.00 ft						
Number of Packers:		2	Diameter:	6.75 inches				

Tool Comments: Hit a bridge on stand 9

Tool Description

Length (ft) Serial No. Position Depth (ft) Accum. Lengths

Change Over Sub	1.00			7155.00		
Shut In Tool	5.00			7160.00		
Hydraulic tool	5.00			7165.00		
Jars	5.00			7170.00		
Safety Joint	3.00			7173.00		
Packer	5.00			7178.00	28.00	Bottom Of Top Packer
Packer	4.00			7182.00		
Stubb	1.00			7183.00		
Recorder	0.00	8646	Inside	7183.00		
Recorder	0.00	8365	Outside	7183.00		
Perforations	4.00			7187.00		
Change Over Sub	1.00			7188.00		
Drill Pipe	95.00			7283.00		
Change Over Sub	1.00			7284.00		
Bullnose	5.00			7289.00	107.00	Bottom Packers & Anchor

Total Tool Length: 135.00



TRILOBITE
TESTING, INC.

DRILL STEM TEST REPORT

FLUID SUMMARY

Grand Mesa Operating Co.

4-10s-55w Lincoln, CO

1700 N Waterfront Pkwy

Punkin State #1-4

BL 600

Job Ticket: 49042

DST#: 3

Wichita KS 67206

Test Start: 2013.02.26 @ 18:20:15

ATTN: Bob Schrieber

Mud and Cushion Information

Mud Type: Gel Chem

Cushion Type:

Oil API:

deg API

Mud Weight: 9.00 lb/gal

Cushion Length:

ft

Water Salinity:

ppm

Viscosity: 58.00 sec/qt

Cushion Volume:

bbl

Water Loss: 7.17 in³

Gas Cushion Type:

Resistivity: 0.00 ohm.m

Gas Cushion Pressure:

psig

Salinity: 300.00 ppm

Filter Cake: 1.00 inches

Recovery Information

Recovery Table

Length ft	Description	Volume bbl
0.00	bridge	0.000

Total Length:

ft

Total Volume:

bbl

Num Fluid Samples: 0

Num Gas Bombs: 0

Serial #:

Laboratory Name:

Laboratory Location:

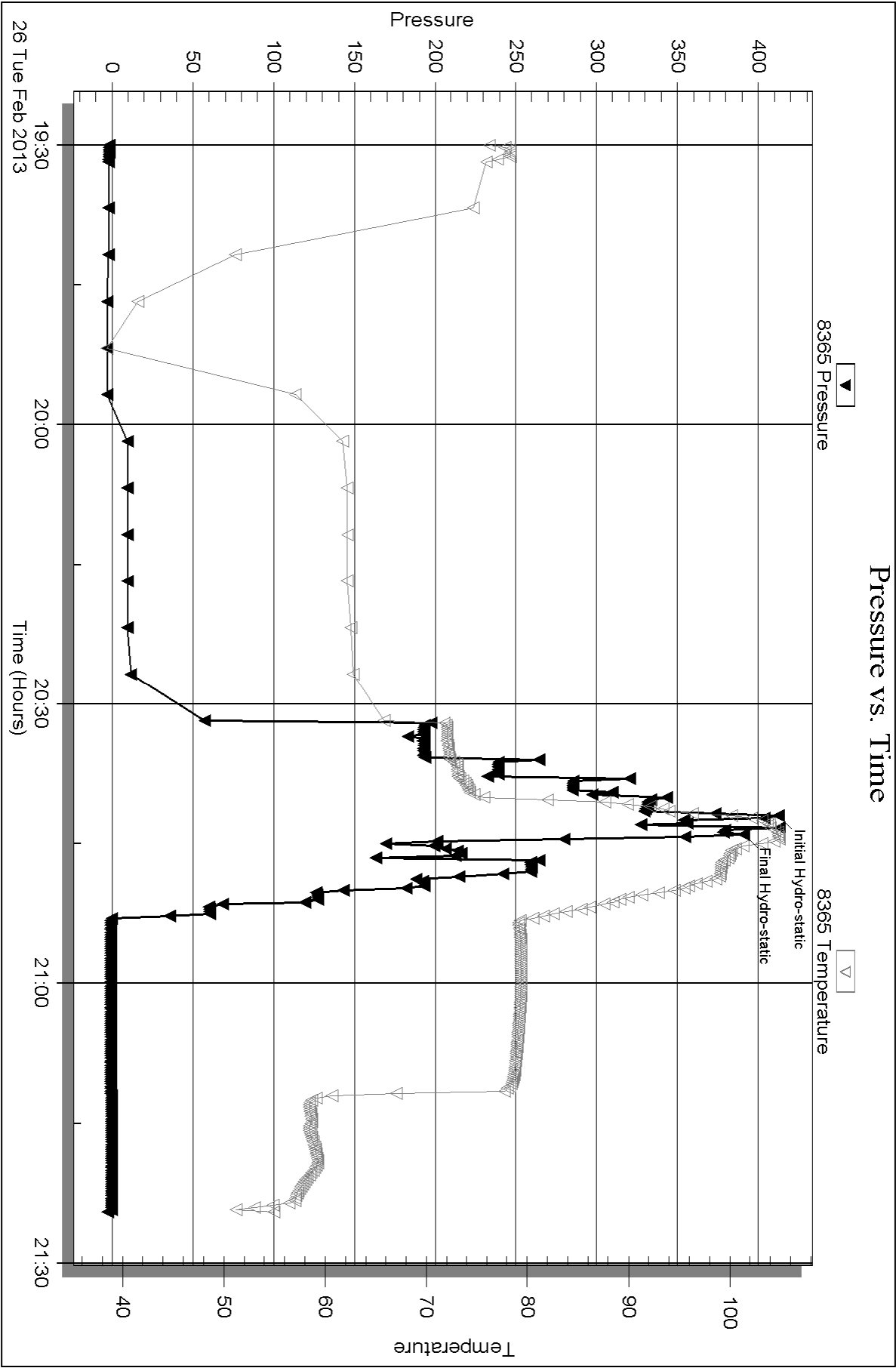
Recovery Comments:

Serial #: 8365

Outside Grand Mesa Operating Co.

Punkin State #1-4

DST Test Number: 3



Serial #: 8646

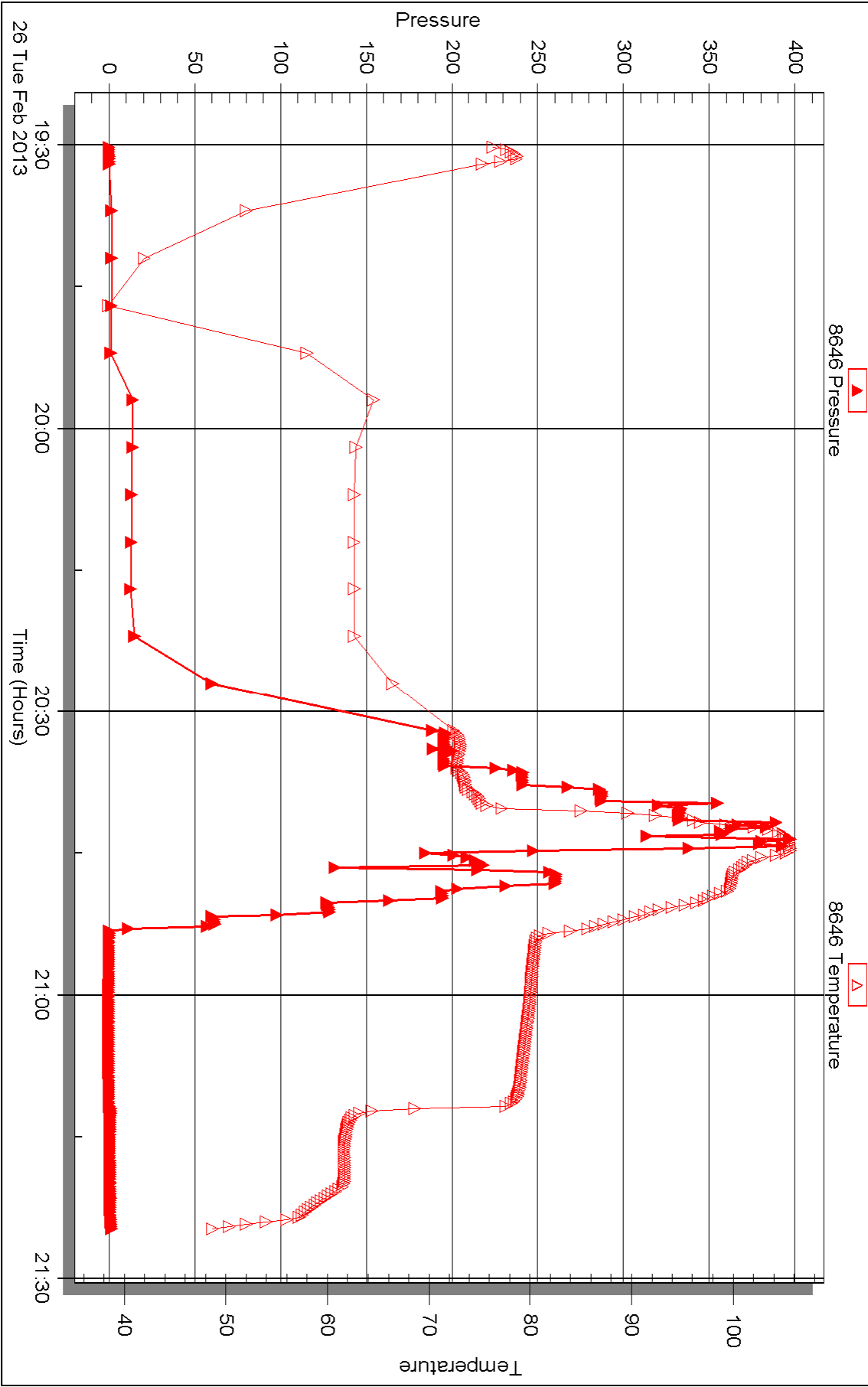
Inside

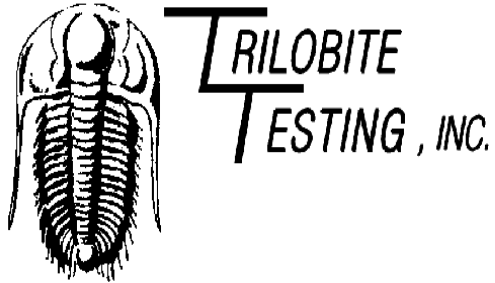
Grand Mesa Operating Co.

Punkin State #1-4

DST Test Number: 3

Pressure vs. Time





DRILL STEM TEST REPORT

Prepared For: **Grand Mesa Operating Co.**

1700 N Waterfront Pkwy
BL 600
Wichita KS 67206

ATTN: Bob Schrieber

Punkin State #1-4

4-10s-55w Lincoln,CO

Start Date: 2013.02.26 @ 17:00:15

End Date: 2013.02.27 @ 06:15:15

Job Ticket #: 49043 DST #: 4

Trilobite Testing, Inc

PO Box 362 Hays, KS 67601

ph: 785-625-4778 fax: 785-625-5620

Printed: 2013.03.08 @ 11:34:10



TRILOBITE
TESTING, INC.

DRILL STEM TEST REPORT

Grand Mesa Operating Co.

4-10s-55w Lincoln, CO

1700 N Waterfront Pkwy
BL 600
Wichita KS 67206
ATTN: Bob Schrieber

Punkin State #1-4

Job Ticket: 49043

DST#: 4

Test Start: 2013.02.26 @ 17:00:15

GENERAL INFORMATION:

Formation: **Vertigris & Krebs**

Deviated: No Whipstock: ft (KB)

Time Tool Opened: 20:15:00

Time Test Ended: 06:15:15

Test Type: Conventional Bottom Hole (Reset)

Tester: Mike Roberts

Unit No: 65

Interval: **7182.00 ft (KB) To 7289.00 ft (KB) (TVD)**

Reference Elevations: 5287.00 ft (KB)

Total Depth: 7289.00 ft (KB) (TVD)

5277.00 ft (CF)

Hole Diameter: 7.88 inches Hole Condition: Fair

KB to GR/CF: 10.00 ft

Serial #: 8646 Inside

Press @ Run Depth: 2015.24 psig @ 7183.00 ft (KB)

Capacity: 8000.00 psig

Start Date: 2013.02.26

End Date:

2013.02.27

Last Calib.: 2013.02.28

Start Time: 17:00:15

End Time:

06:15:15

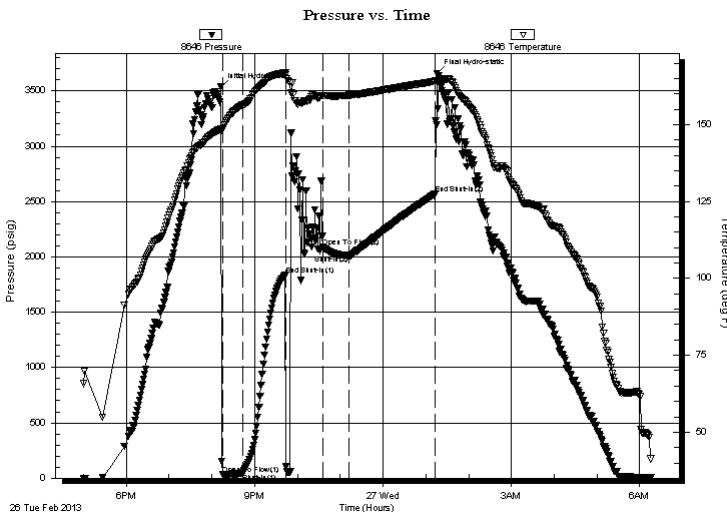
Time On Btm: 2013.02.26 @ 20:13:00

Time Off Btm: 2013.02.27 @ 01:15:30

TEST COMMENT: IF:BOB in 1 min.
IS:No return blow
FF:BOB in 2 min..Started dying back in 45 min died off in 80 min.
FS:No return blow

PRESSURE SUMMARY

Time (Min.)	Pressure (psig)	Temp (deg F)	Annotation
0	3531.19	148.72	Initial Hydro-static
2	31.24	148.28	Open To Flow (1)
31	43.24	156.53	Shut-In(1)
90	1838.36	167.04	End Shut-In(1)
143	2087.05	159.51	Open To Flow (2)
180	2015.24	159.59	Shut-In(2)
300	2568.41	164.13	End Shut-In(2)
303	3658.69	164.05	Final Hydro-static



Recovery

Length (ft)	Description	Volume (bbl)
4485.00	mud 100% m	22.06

Gas Rates

	Choke (inches)	Pressure (psig)	Gas Rate (Mcf/d)
--	----------------	-----------------	------------------

* Recovery from multiple tests



TRILOBITE
TESTING, INC.

DRILL STEM TEST REPORT

Grand Mesa Operating Co.

4-10s-55w Lincoln, CO

1700 N Waterfront Pkw y
BL 600
Wichita KS 67206
ATTN: Bob Schrieber

Punkin State #1-4

Job Ticket: 49043

DST#: 4

Test Start: 2013.02.26 @ 17:00:15

GENERAL INFORMATION:

Formation: **Vertigris& Krebs**

Deviated: No Whipstock: ft (KB)

Time Tool Opened: 20:15:00

Time Test Ended: 06:15:15

Test Type: Conventional Bottom Hole (Reset)

Tester: Mike Roberts

Unit No: 65

Interval: 7182.00 ft (KB) To 7289.00 ft (KB) (TVD)

Reference Elevations: 5287.00 ft (KB)

Total Depth: 7289.00 ft (KB) (TVD)

5277.00 ft (CF)

Hole Diameter: 7.88 inches Hole Condition: Fair

KB to GR/CF: 10.00 ft

Serial #: 8365 Outside

Press@RunDepth: psig @ 7183.00 ft (KB)

Capacity: 8000.00 psig

Start Date: 2013.02.26

End Date:

2013.02.27

Last Calib.:

2013.02.28

Start Time: 17:00:15

End Time:

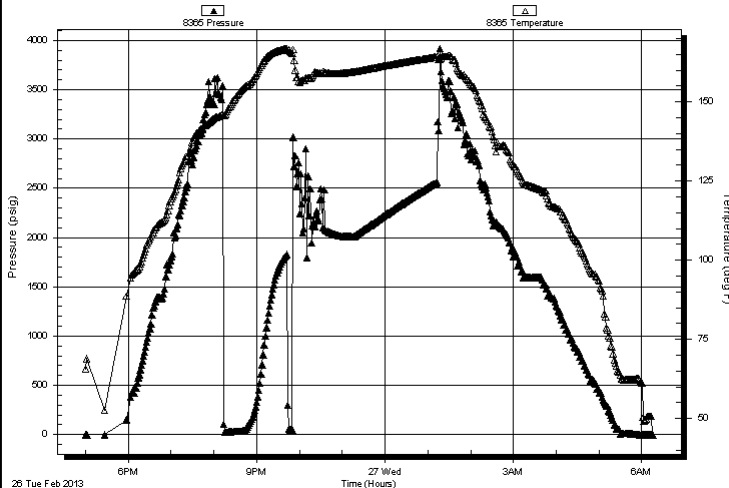
06:15:30

Time On Btm:

Time Off Btm:

TEST COMMENT: IF:BOB in 1 min.
IS:No return blow
FF:BOB in 2 min...Started dying back in 45 min died off in 80 min.
FS:No return blow

Pressure vs. Time



PRESSURE SUMMARY

Time (Min.)	Pressure (psig)	Temp (deg F)	Annotation
-------------	-----------------	--------------	------------

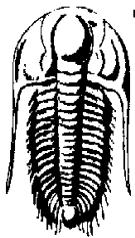
Recovery

Length (ft)	Description	Volume (bbl)
4485.00	mud 100% m	22.06

Gas Rates

	Choke (inches)	Pressure (psig)	Gas Rate (Mcf/d)
--	----------------	-----------------	------------------

* Recovery from multiple tests



TRILOBITE
TESTING, INC.

DRILL STEM TEST REPORT

TOOL DIAGRAM

Grand Mesa Operating Co.

4-10s-55w Lincoln, CO

1700 N Waterfront Pkwy
BL 600
Wichita KS 67206
ATTN: Bob Schrieber

Punkin State #1-4

Job Ticket: 49043

DST#: 4

Test Start: 2013.02.26 @ 17:00:15

Tool Information

Drill Pipe:	Length:	7161.00 ft	Diameter:	2.25 inches	Volume:	35.22 bbl	Tool Weight:	1500.00 lb
Heavy Wt. Pipe:	Length:	0.00 ft	Diameter:	0.00 inches	Volume:	0.00 bbl	Weight set on Packer:	20000.00 lb
Drill Collar:	Length:	0.00 ft	Diameter:	0.00 inches	Volume:	0.00 bbl	Weight to Pull Loose:	11000.00 lb
					Total Volume:	35.22 bbl	Tool Chased	0.00 ft
Drill Pipe Above KB:		7.00 ft					String Weight: Initial	62000.00 lb
Depth to Top Packer:		7182.00 ft					Final	70000.00 lb
Depth to Bottom Packer:		ft						
Interval between Packers:		107.00 ft						
Tool Length:		135.00 ft						
Number of Packers:		2	Diameter:	6.75 inches				

Tool Comments: Had a packer failure on the 2nd open

Tool Description	Length (ft)	Serial No.	Position	Depth (ft)	Accum. Lengths
Change Over Sub	1.00			7155.00	
Shut In Tool	5.00			7160.00	
Hydraulic tool	5.00			7165.00	
Jars	5.00			7170.00	
Safety Joint	3.00			7173.00	
Packer	5.00			7178.00	28.00 Bottom Of Top Packer
Packer	4.00			7182.00	
Stubb	1.00			7183.00	
Recorder	0.00	8646	Inside	7183.00	
Recorder	0.00	8365	Outside	7183.00	
Perforations	4.00			7187.00	
Change Over Sub	1.00			7188.00	
Drill Pipe	95.00			7283.00	
Change Over Sub	1.00			7284.00	
Bullnose	5.00			7289.00	107.00 Bottom Packers & Anchor

Total Tool Length: 135.00



TRILOBITE
TESTING, INC.

DRILL STEM TEST REPORT

FLUID SUMMARY

Grand Mesa Operating Co.

4-10s-55w Lincoln, CO

1700 N Waterfront Pkwy

BL 600

Wichita KS 67206

ATTN: Bob Schrieber

Punkin State #1-4

Job Ticket: 49043

DST#: 4

Test Start: 2013.02.26 @ 17:00:15

Mud and Cushion Information

Mud Type: Gel Chem

Mud Weight: 9.00 lb/gal

Viscosity: 58.00 sec/qt

Water Loss: 7.18 in³

Resistivity: 0.00 ohm.m

Salinity: 300.00 ppm

Filter Cake: 1.00 inches

Cushion Type:

Cushion Length:

Cushion Volume:

Gas Cushion Type:

Gas Cushion Pressure:

Oil API:

Water Salinity:

0 deg API

0 ppm

ft

bbl

psig

Recovery Information

Recovery Table

Length ft	Description	Volume bbl
4485.00	mud 100% m	22.056

Total Length: 4485.00 ft

Total Volume: 22.056 bbl

Num Fluid Samples: 0

Num Gas Bombs: 0

Serial #:

Laboratory Name:

Laboratory Location:

Recovery Comments:

Serial #: 8646

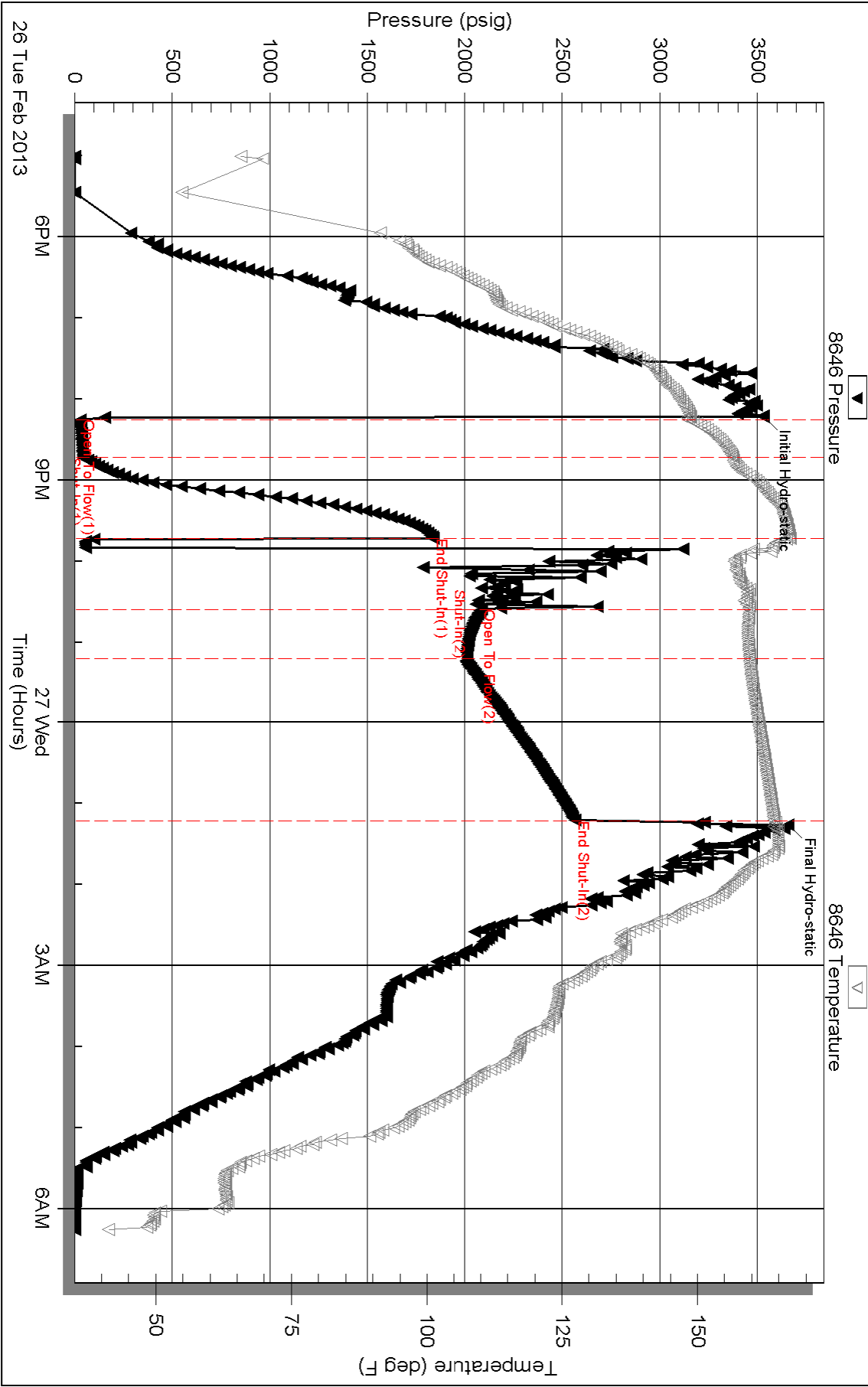
Inside

Grand Mesa Operating Co.

Punkin State #1-4

DST Test Number: 4

Pressure vs. Time

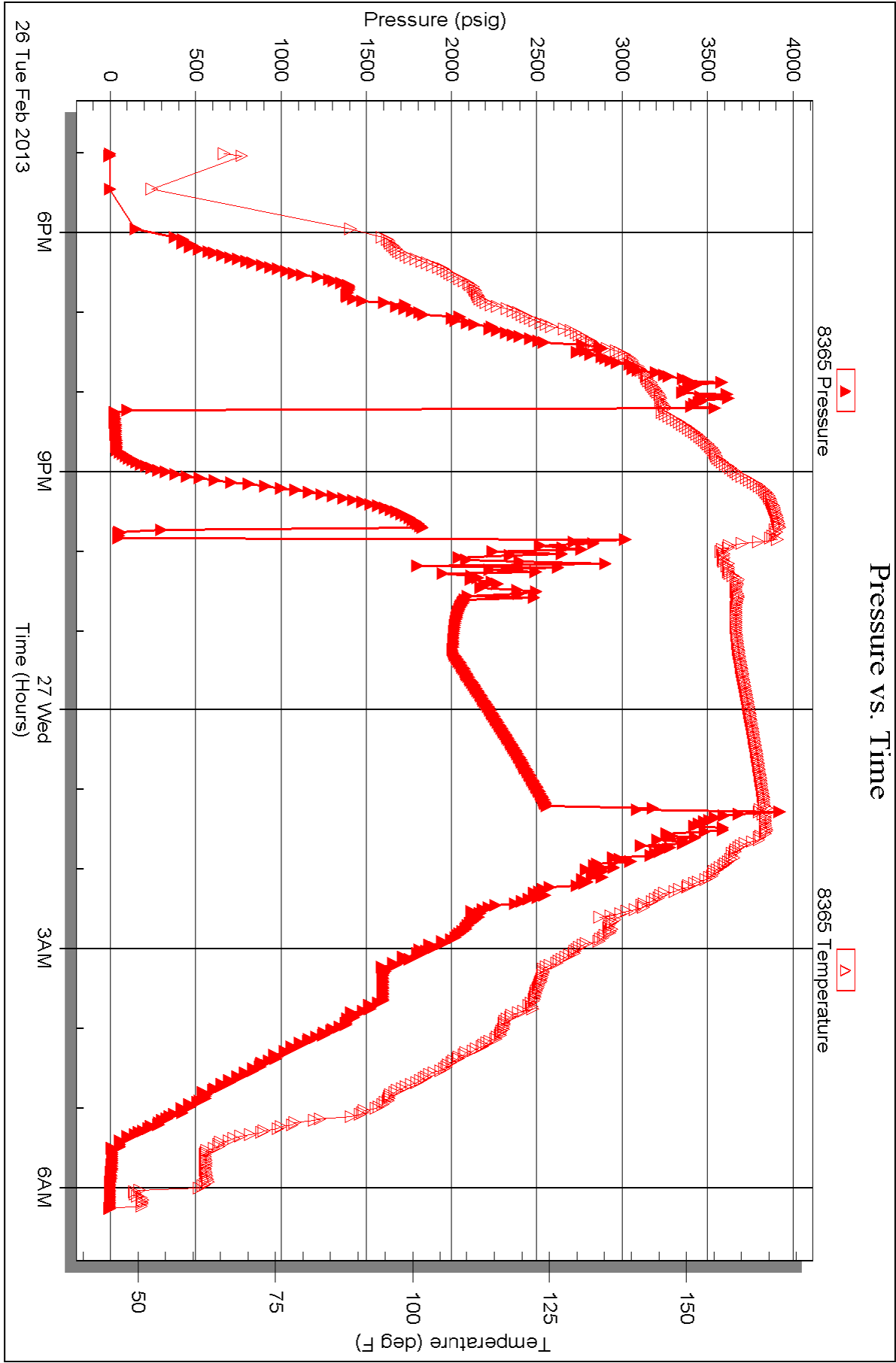


Serial #: 8365

Outside Grand Mesa Operating Co.

Punkin State #1-4

DST Test Number: 4





TRILOBITE TESTING INC.

P.O. Box 1733 • Hays, Kansas 67601

Test Ticket

NO. 49040

Well Name & No. Punkin State #1-4 Test No. 1 Date 2-24-13
 Company Grand Mesa Operating Co. Elevation 5287 KB 5277 GL
 Address 1700 N. Waterfront PKWY BL 600 Wichita KS 67206
 Co. Rep / Geo. Bob Schrieber Rig Murfin 25
 Location: Sec. 4 Twp. 10S Rge. 55W Co. Lincoln State CO

Interval Tested 7067-7094 Zone Tested Pawnee
 Anchor Length 27 Drill Pipe Run 7046 Mud Wt. 9.0
 Top Packer Depth 7063 Drill Collars Run 0 Vis 60
 Bottom Packer Depth 7067 Wt. Pipe Run 0 WL 6.4
 Total Depth 7094 Chlorides 300 ppm System LCM 8
 Blow Description IF: BOB IN 45 seconds
IS: NO Return Blow

FF: BOB IN 45 seconds Gas to Surface 38 min
FS: Return Blow BACK Built to BOB in 38 min

Rec	Feet of	%gas	%oil	%water	%mud
<u>124</u>	<u>OCgm</u>	<u>15</u>	<u>5</u>	<u>80</u>	<u>0</u>
<u>94</u>	<u>OCmg</u>	<u>80</u>	<u>10</u>	<u>10</u>	<u>0</u>
<u>188</u>	<u>gcmw</u>	<u>20</u>	<u>60</u>	<u>20</u>	<u>0</u>
<u>✓</u>	<u>GIP = 6580</u>	<u>0</u>	<u>0</u>	<u>0</u>	<u>0</u>
<u>✓</u>	<u>Feet of</u>	<u>0</u>	<u>0</u>	<u>0</u>	<u>0</u>

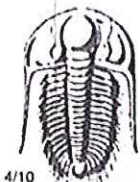
Rec Total 406 BHT 175 Gravity 16.80% API RW 201 @ 56.8 °F Chlorides 53000 ppm
 (A) Initial Hydrostatic 3417 ☒ Test 16.80% T-On Location 20:30
 (B) First Initial Flow 53 ☒ Jars 250.00% T-Started 02:44
 (C) First Final Flow 77 ☒ Safety Joint 75.00% T-Open 06:46
 (D) Initial Shut-In 1442 ☒ Circ Sub 0 T-Pulled 10:31
 (E) Second Initial Flow 91 ☒ Hourly Standby 0 T-Out 14:04
 (F) Second Final Flow 144 ☒ Mileage 380 RT = 589.00% Comments 0
 (G) Final Shut-In 1529 ☐ Sampler 0
 (H) Final Hydrostatic 3276 ☐ Straddle 0
☒ Shale Packer 250.00% ☐ Ruined Shale Packer 0
☐ Extra Packer 0 ☐ Ruined Packer 0
☐ Extra Recorder 0 ☐ Extra Copies 0
☐ Day Standby 0 Sub Total 0
☐ Accessibility 0 Total 2814
 Sub Total 2814.00% MP/DST Disc't 0

Initial Open 30
 Initial Shut-In 45
 Final Flow 60
 Final Shut-In 90

Approved By Leo L. Allen

Our Representative M. Roberts

Tritobite Testing Inc. shall not be liable for damaged of any kind of the property or personnel of the one for whom a test is made, or for any loss suffered or sustained, directly or indirectly, through the use of its equipment, or its statements or opinion concerning the results of any test, tools lost or damaged in the hole shall be paid for at cost by the party for whom the test is made.



**TRILOBITE
TESTING INC.**

P.O. Box 1733 • Hays, Kansas 67601

Test Ticket

NO. 49041

8846

8365

Well Name & No. Punkin State #1-4 Test No. 2 Date 2-25-13
 Company Grand Mesa Operating Co Elevation 5287 KB 5277 GL
 Address 1700 N. Waterfront PKWY BL 600 Wichita KS 67206
 Co. Rep / Geo. Kent Matson Rig Murfin 25
 Location: Sec. 4 Twp. 10S Rge. 55W Co. Lincoln State CO

Interval Tested 7108-7180 Zone Tested Upper + Lower Ft. Scott
 Anchor Length 72 Drill Pipe Run 7097 Mud Wt. 9.1
 Top Packer Depth 7104 Drill Collars Run 0 Vis 64
 Bottom Packer Depth 7108 Wt. Pipe Run 0 WL 7.2
 Total Depth 7180 Chlorides 300 ppm System LCM 8

Blow Description IF: Built to 3" Blow
IS: No Return Blow
FF: Built to 4" Blow
FS: No Return Blow

Rec	Feet of	%gas	%oil	%water	%mud
<u>15</u>	<u>MUD</u>			<u>100</u>	

Rec Total	BHT	Gravity	API RW	@	F	Chlorides	ppm
<u>15</u>	<u>170</u>						
(A) Initial Hydrostatic	<u>3495</u>	<input checked="" type="checkbox"/> Test	<u>1650.00/-</u>			T-On Location	<u>04:00</u>
(B) First Initial Flow	<u>19</u>	<input checked="" type="checkbox"/> Jars	<u>250.00/-</u>			T-Started	<u>07:53</u>
(C) First Final Flow	<u>16</u>	<input checked="" type="checkbox"/> Safety Joint	<u>75.00/-</u>			T-Open	<u>11:32</u>
(D) Initial Shut-In	<u>175</u>	<input checked="" type="checkbox"/> Circ Sub	<u>NL</u>			T-Pulled	<u>16:32</u>
(E) Second Initial Flow	<u>14</u>	<input type="checkbox"/> Hourly Standby				T-Out	<u>19:18</u>
(F) Second Final Flow	<u>18</u>	<input checked="" type="checkbox"/> Mileage	<u>380 RT = 569.00</u>			Comments	
(G) Final Shut-In	<u>218</u>	<input type="checkbox"/> Sampler					
(H) Final Hydrostatic	<u>3534</u>	<input type="checkbox"/> Straddle				<input type="checkbox"/> Ruined Shale Packer	

Initial Open	<u>30</u>	<input checked="" type="checkbox"/> Shale Packer	<u>250.00/-</u>	<input type="checkbox"/> Ruined Packer	
Initial Shut-In	<u>60</u>	<input type="checkbox"/> Extra Packer		<input type="checkbox"/> Extra Copies	
Final Flow	<u>90</u>	<input type="checkbox"/> Extra Recorder		Sub Total	<u>0</u>
Final Shut-In	<u>120</u>	<input type="checkbox"/> Day Standby		Total	<u>2814.00</u>
		<input type="checkbox"/> Accessibility		MP/DST Disc't	
		Sub Total	<u>2814.00/-</u>		

Approved By

Kent Matson

Our Representative

Mike Roberts

TriLOBITE TESTING Inc. shall not be liable for damaged of any kind of the property or personnel of the one for whom a test is made, or for any loss suffered or sustained, directly or indirectly, through the use of its equipment, or its statements or opinion concerning the results of any test, tools lost or damaged in the hole shall be paid for at cost by the party for whom the test is made.



TRILOBITE TESTING INC.

P.O. Box 1733 • Hays, Kansas 67601

Test Ticket

NO. 49042

Well Name & No. Punkin State #1-4 Test No. 3 Date 2-26-13
 Company Grand Mesa Operating Co Elevation 5287 KB 5277 GL
 Address 1700 N Waterfront PKWY BL 600 Wichita KS 67206
 Co. Rep / Geo. Kent Matson Rig Murkin 25
 Location: Sec. 4 Twp. 10S Rge. 55W Co. Lincoln State CO

Interval Tested 7182-7289 Zone Tested Vertigris + Krebs
 Anchor Length 107 Drill Pipe Run 7167 Mud Wt. 9.1
 Top Packer Depth 7178 Drill Collars Run Ø Vis 58
 Bottom Packer Depth 7182 Wt. Pipe Run Ø WL 7.2
 Total Depth 7289 Chlorides 300 ppm System LCM 8
 Blow Description IF: Miss Run Hit Bridge
IS:
FF:
FS:

Rec	Feet of	%gas	%oil	%water	%mud
Rec	Feet of	%gas	%oil	%water	%mud
Rec	Feet of	%gas	%oil	%water	%mud
Rec	Feet of	%gas	%oil	%water	%mud
Rec	Feet of	%gas	%oil	%water	%mud

Rec Total	BHT	Gravity	API RW	@	°F	Chlorides	ppm
(A) Initial Hydrostatic <u>412</u>		<input checked="" type="checkbox"/> Test 1450	<u>1650.00%</u>			T-On Location <u>15:08</u>	
(B) First Initial Flow		<input checked="" type="checkbox"/> Jars	<u>250.00%</u>			T-Started	
(C) First Final Flow		<input checked="" type="checkbox"/> Safety Joint	<u>75.00%</u>			T-Open	
(D) Initial Shut-In		<input checked="" type="checkbox"/> Circ Sub	<u>N/C</u>			T-Pulled	
(E) Second Initial Flow		<input type="checkbox"/> Hourly Standby				T-Out	
(F) Second Final Flow		<input checked="" type="checkbox"/> Mileage <u>380RT = 589.00%</u>				Comments	
(G) Final Shut-In		<input type="checkbox"/> Sampler					
(H) Final Hydrostatic <u>391</u>		<input type="checkbox"/> Straddle				<input type="checkbox"/> Ruined Shale Packer	
		<input checked="" type="checkbox"/> Shale Packer <u>250.00%</u>				<input type="checkbox"/> Ruined Packer	

Initial Open
 Initial Shut-In Bridge
 Final Flow
 Final Shut-In

☐ Extra Packer
☐ Extra Recorder
☐ Day Standby
☐ Accessibility
 Sub Total 2614.00 2814.00%

☐ Ruined Shale Packer
☐ Ruined Packer
☐ Extra Copies
 Sub Total 0
 Total 2614.00
 MP/DST Disc't

Approved By Kent Matson

Our Representative M. Roberts

Trilobite Testing Inc. shall not be liable for damaged of any kind of the property or personnel of the one for whom a test is made, or for any loss suffered or sustained, directly or indirectly, through the use of its equipment, or its statements or opinion concerning the results of any test, tools lost or damaged in the hole shall be paid for at cost by the party for whom the test is made.



TRILOBITE TESTING INC.

P.O. Box 1733 • Hays, Kansas 67601

Test Ticket

NO. 49043

Well Name & No. Punkin State #1-4 Test No. 4 Date 2-27-13
 Company Grand Mesa Operating Company Elevation 5287 KB 5277 GL
 Address 1700 N Waterfront PKWY BL 600 Wichita KS 67204
 Co. Rep / Geo. Kent Matson Rig Murfin 25
 Location: Sec. 4 Twp. 10 S Rge. 55 W Co. Lincoln State CO

Interval Tested 7182-7289 Zone Tested Verticris + Krebs
 Anchor Length 107 Drill Pipe Run 7161 Mud Wt. 9.1
 Top Packer Depth 7178 Drill Collars Run Ø Vis 58
 Bottom Packer Depth 7182 Wt. Pipe Run Ø WL 7.2
 Total Depth 7189 Chlorides 300 ppm System LCM 8
 Blow Description IF: BOB in 1 Min.
IS: No Return Blow
FF: BOB in 2 MIN Started Dicing off in 45 Min. Died off in 80 min
FS: No Return Blow

Rec	Feet of	%gas	%oil	%water	%mud
4485	MUD			100	

Rec Total 4485 BHT 170 Gravity — API RW — @ — °F Chlorides — ppm

(A) Initial Hydrostatic 3531
 (B) First Initial Flow 31
 (C) First Final Flow 43
 (D) Initial Shut-In 1838
 (E) Second Initial Flow 2087 *
 (F) Second Final Flow 2015 *
 (G) Final Shut-In 2568 *
 (H) Final Hydrostatic 3658 *

☒ Test 1450 1650.00/-
☒ Jars 250.00/-
☒ Safety Joint 75.00/-
☒ Circ Sub —
☐ Hourly Standby —
☒ Mileage 380 RT = 589.00/-
☐ Sampler —
☐ Straddle —
☒ Shale Packer 250.00/-
☐ Extra Packer —
☐ Extra Recorder —
☐ Day Standby —
☐ Accessibility —
 Sub Total 2614 2814.00/-

T-On Location 15:00
 T-Started 18:00
 T-Open 19:12 no time
 T-Pulled 00:12
 T-Out 06:15
 Comments Looks to me
Packer Failure
Oil 2nd Open
☐ Ruined Shale Packer
☐ Ruined Packer
☐ Extra Copies
 Sub Total 0
 Total 2614
 MP/DST Disc't —

Initial Open 30
 Initial Shut-In 60
 Final Flow 90
 Final Shut-In 120

Approved By Leo R. Matson

Our Representative Mike Roberts

TriLOBITE Testing Inc. shall not be liable for damaged or any kind of the property or personnel of the one for whom a test is made, or for any loss suffered or sustained, directly or indirectly, through the use of its equipment, or its statements or opinion concerning the results of any test, tools lost or damaged in the hole shall be paid for at cost by the party for whom the test is made.



TRILOBITE TESTING INC.

P.O. Box 1733 • Hays, Kansas 67601

Test Ticket

NO. 49044

Well Name & No. Parkin State #1-4 Test No. _____ Date 3-3-13
 Company Grand Mesa Operating Co Elevation 5287 KB 5277 GL
 Address 1700 N. Waterfront Pkwy BL 600 Wichita KS 67206
 Co. Rep / Geo. Kent Matson Rig Murkin 25
 Location: Sec. 4 Twp. 10S Rge. 55W Co. Lincoln State CO

Interval Tested _____ Zone Tested _____
 Anchor Length _____ Drill Pipe Run _____ Mud Wt. _____
 Top Packer Depth _____ Drill Collars Run _____ Vis _____
 Bottom Packer Depth _____ Wt. Pipe Run _____ WL _____
 Total Depth _____ Chlorides _____ ppm System LCM _____
 Blow Description _____

Rec	Feet of	%gas	%oil	%water	%mud
Rec	Feet of	%gas	%oil	%water	%mud
Rec	Feet of	%gas	%oil	%water	%mud
Rec	Feet of	%gas	%oil	%water	%mud
Rec	Feet of	%gas	%oil	%water	%mud

Rec Total _____ BHT _____ Gravity _____ API RW _____ @ _____ °F Chlorides _____ ppm

(A) Initial Hydrostatic _____ ☐ Test _____ T-On Location 11:00 KS
 (B) First Initial Flow _____ ☐ Jars _____ T-Started _____ Time
 (C) First Final Flow _____ ☐ Safety Joint _____ T-Open _____
 (D) Initial Shut-In _____ ☐ Circ Sub _____ T-Pulled _____
 (E) Second Initial Flow _____ ☒ Hourly Standby Wait on Logger T-Out _____
 (F) Second Final Flow _____ ☒ Mileage 380 RT 589.00 Comments Loaded Tools
 (G) Final Shut-In _____ ☐ Sampler was told by at 4:30 KS Time
 (H) Final Hydrostatic _____ ☐ Straddle Geo to Be
☐ Shale Packer there at 11:00
☐ Extra Packer _____
☐ Extra Recorder _____

Initial Open _____
 Initial Shut-In _____
 Final Flow _____ ☒ Day Standby X3 1d 58.25
 Final Shut-In _____ ☐ Accessibility _____
 Sub Total 589.00
 Sub Total _____
 MP/DST Disc't _____

Approved By _____ Our Representative Mike Robert
 Trilobite Testing Inc. shall not be liable for damaged of any kind of the property or personnel of the one for whom a test is made, or for any loss suffered or sustained, directly or indirectly, through the use of its equipment, or its statements or opinion concerning the results of any test, tools lost or damaged in the hole shall be paid for at cost by the party for whom the test is made.