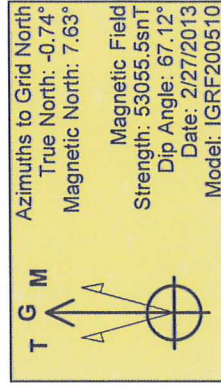
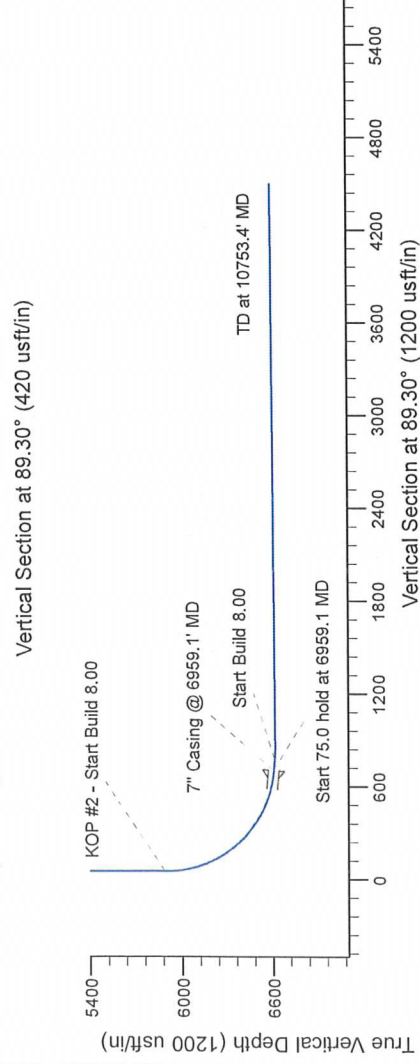
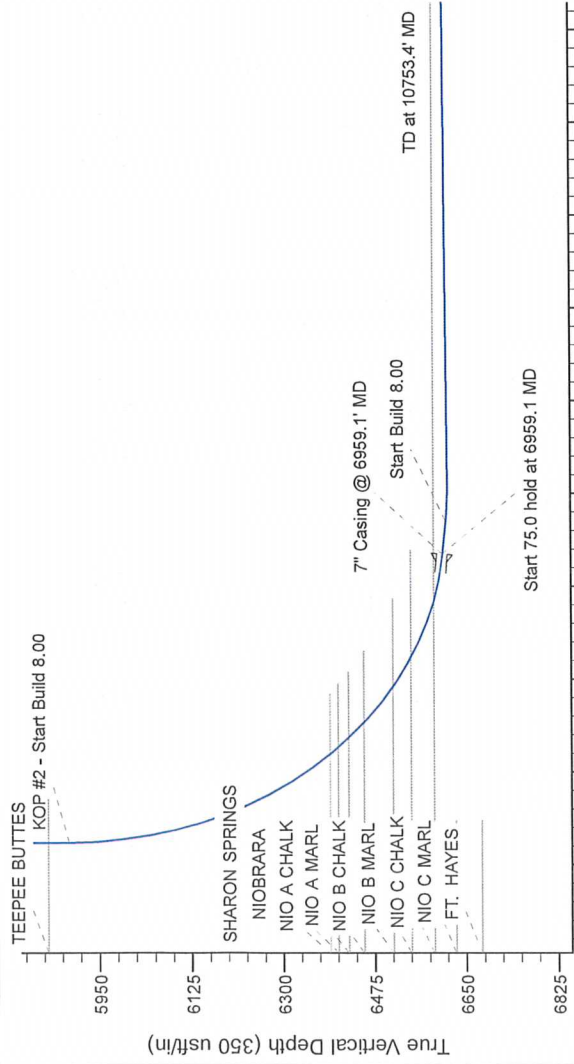


Geodetic System: US State Plane 1983
Datum: North American Datum 1983
Ellipsoid: GRS 1980
Zone: Colorado Northern Zone
System Datum: Mean Sea Level

Project: Wattenberg Field
Site: AE (Sec.20-T06N-R62W) Weld County, CO
Well: Wells Ranch AE20-64-1HN
Wellbore: Original Drilling
Design: APD - Rev 0

Sec	MD	Inc	Azi	TVD	+N/S	+E/W	Dleg	TFace	Vsect	Target
1	200.0	0.0	0.0	0.0	0.0	0.0	0.0	0.0	0.0	
2	220.0	0.0	0.0	2200.0	0.0	0.0	0.0	0.0	0.0	
3	2683.4	9.67	143.67	2681.1	-32.8	24.1	2.0	143.67	23.7	
4	2701.5	9.67	143.67	2698.9	-35.2	25.9	0.0	0.0	25.5	
5	3184.8	0.0	0.0	3180.0	-68.0	50.0	2.0	180.0	49.2	
6	5896.6	0.0	0.0	5891.8	-68.0	50.0	0.0	0.0	49.2	
7	6959.1	85.00	88.42	6605.3	-49.9	703.5	8.00	88.42	702.9	
8	7034.1	85.00	88.42	6611.8	-47.9	778.2	0.00	0.00	777.6	
9	7100.4	90.30	88.42	6614.5	-46.1	844.9	0.00	0.00	843.7	
10	10753.4	90.30	88.42	6595.4	54.8	4495.4	8.00	0.00	4496.3	Wells R



WELL DETAILS: Wells Ranch AE20-64-1HN			
		Ground Level: 4785.0	
	Nothing	Easting	Longitude
0.0	0.0	1416000.33 3318468.71	-104.355320
		40.469680	
Plan: APD - Rev 0 (Wells Ranch AE20-64-1HN/Original Drilling)			
Created By: Shalley Jewell		Date: 10/12, March 08 2013	
Checked: _____		Date: _____	
Reviewed: _____		Date: _____	
Approved: _____		Date: _____	