

Project: Wattenberg Field
Site: AE (Sec.20-T06N-R62W) Weld County, CO
Well: Wells Ranch AE20-63HN
Wellbore: Original Drilling
Design: APD - Rev 0

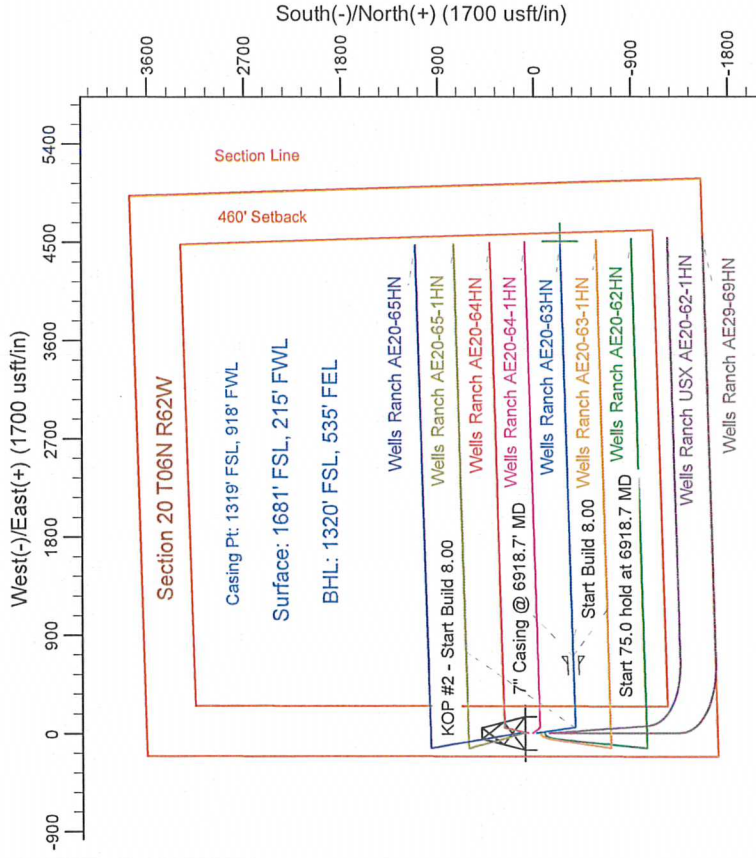
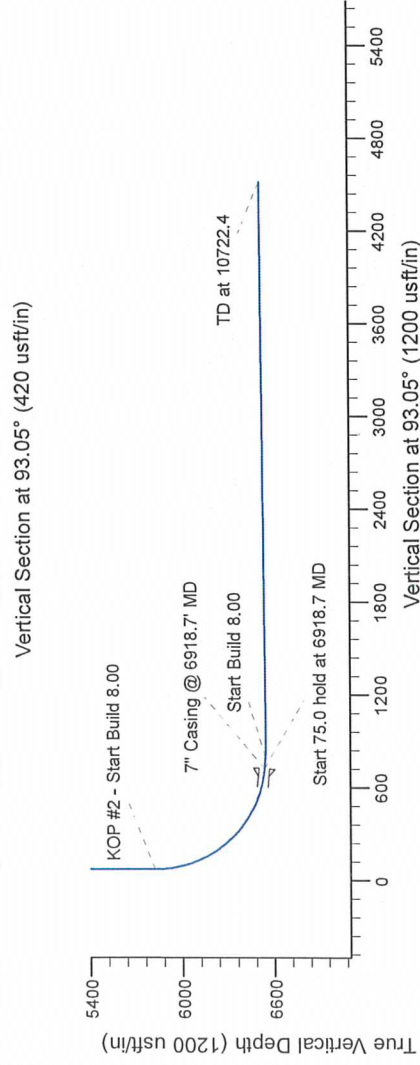
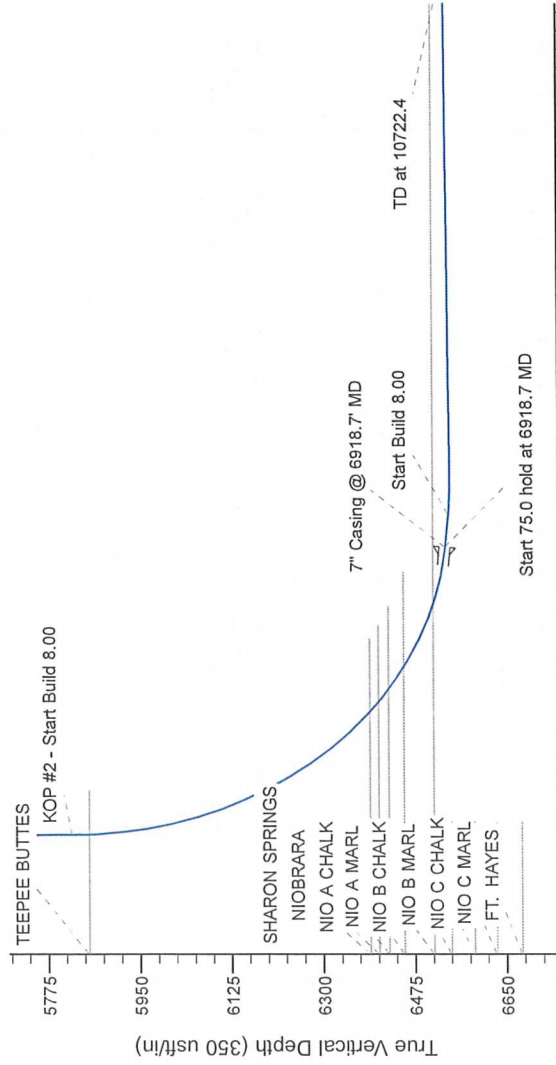
Northern Region Drilling

Geodetic System: US State Plane 1983
Datum: North American Datum 1983
Ellipsoid: GRS 1980
Zone: Colorado Northern Zone
System Datum: Mean Sea Level

SECTION DETAILS

Sec	MD	Inc	Azi	TVD	+N/-S	+E/-W	Dleg	TFace	VSept	Target
1	0.0	0.00	0.00	0.0	0.0	0.0	0.00	0.00	0.0	
2	1800.0	0.00	0.00	1800.0	0.0	0.0	0.00	0.00	0.0	
3	2450.9	13.02	172.11	2445.3	-72.9	10.1	2.00	172.11	14.0	
4	3415.0	13.02	172.11	3384.7	-288.1	39.9	0.00	0.00	55.2	
5	4066.0	0.00	0.00	4030.0	-361.0	50.0	2.00	180.00	69.1	
6	5856.2	0.00	0.00	5820.2	-361.0	50.0	0.00	0.00	69.1	
7	6918.7	85.00	88.45	6533.7	-343.3	703.5	8.00	88.45	720.8	
8	6993.7	85.00	88.45	6540.3	-341.3	778.2	0.00	0.00	795.3	
9	7061.2	90.40	88.45	6543.0	-339.4	845.6	8.00	0.00	862.5	
10	10722.4	90.40	88.45	6517.4	-240.2	4505.4	0.00	0.00	4511.8	

Wells Ranch AE20-63HN BHL1320FSL, 535FEL



T G M

Azimuths to Grid North
True North: -0.74°
Magnetic North: 7.63°

Magnetic Field
Strength: 53055.5snT
Dip Angle: 67.12°
Date: 2/27/2013
Model: IGRF200510

WELL DETAILS: Wells Ranch AE20-63HN

North	East	Latitude	Longitude
0.0	0.0	1415963.90	3318469.18
0.0	0.0	40.469580	-104.355320

Plan: APD - Rev 0 (Wells Ranch AE20-63HN/Original Drilling)

Created By: Shailey Jewell Date: 9:50, March 08 2013
Checked: _____ Date: _____
Reviewed: _____ Date: _____
Approved: _____ Date: _____