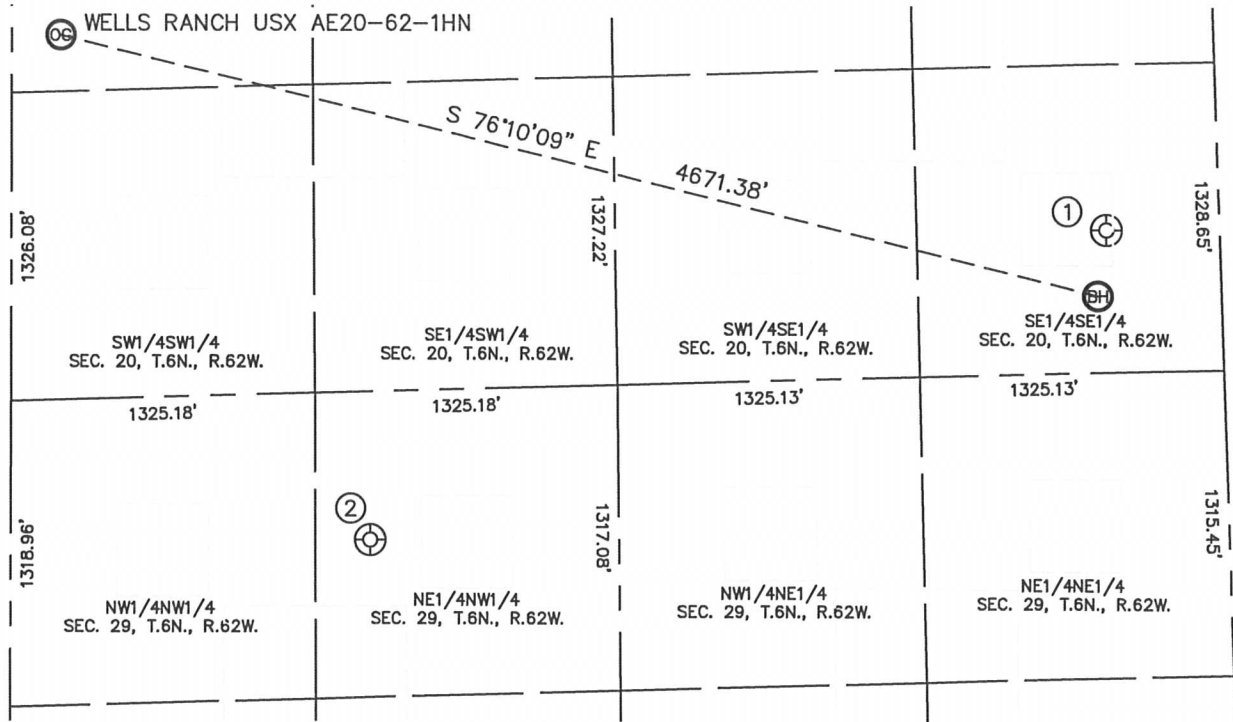


Lat40°, Inc. 1635 Foxtrail Drive, Suite 325 Loveland, CO 970-776-3321

SITE SKETCH

WELLS RANCH USX AE20-62-1HN

SECTION: 20
TOWNSHIP: 6N
RANGE: 62W

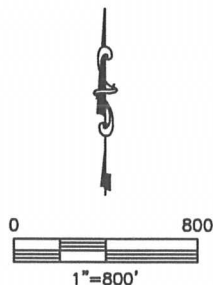


①

WELLS RANCH AE20-16
SE1/4SE1/4
613' FSL
490' FEL
LAT-40.46682°N
LONG-104.33894°W
PDOP:1.7
ELEV:4857'

②

WELLS RANCH USX AE29-99HZ
NE1/4NW1/4
640' FNL
1568' FWL
LAT-40.46326°N
LONG-104.35059°W
PDOP:2.1
ELEV:4810'



DATE: 12/10/2012
PROJECT#: 2012075