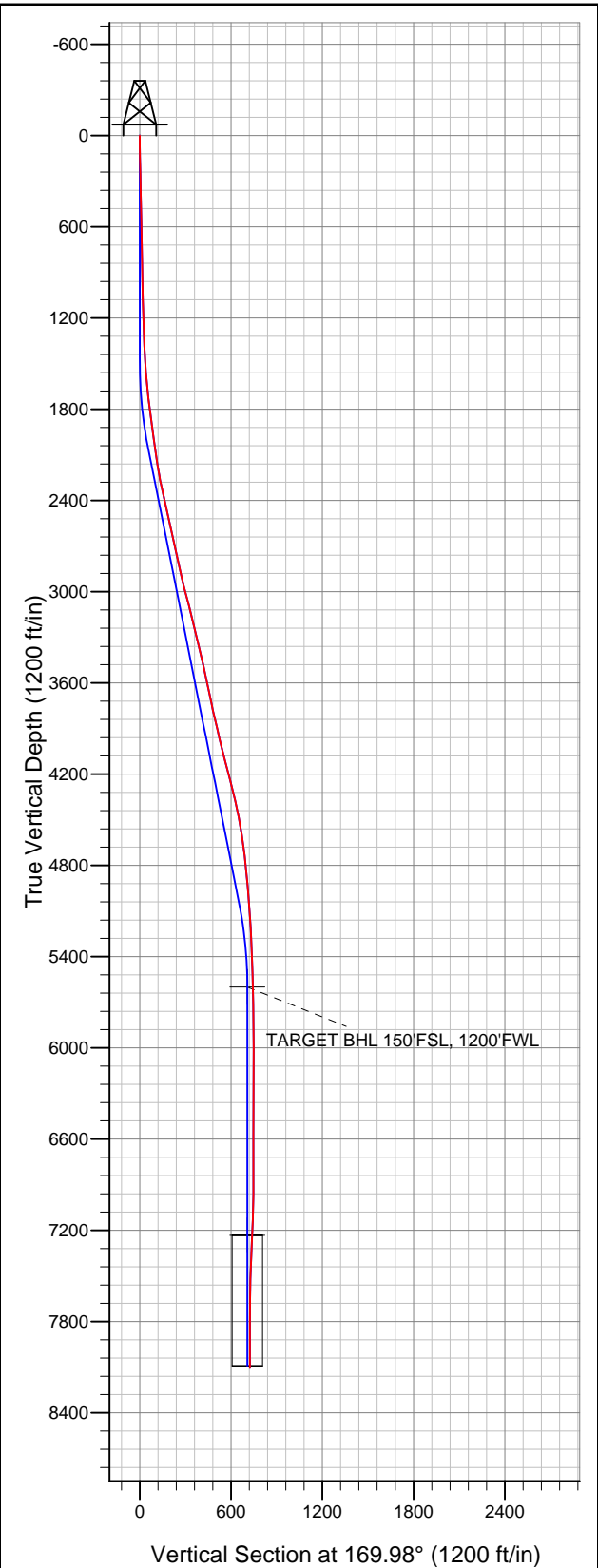


Well Name: lone 2-8-2

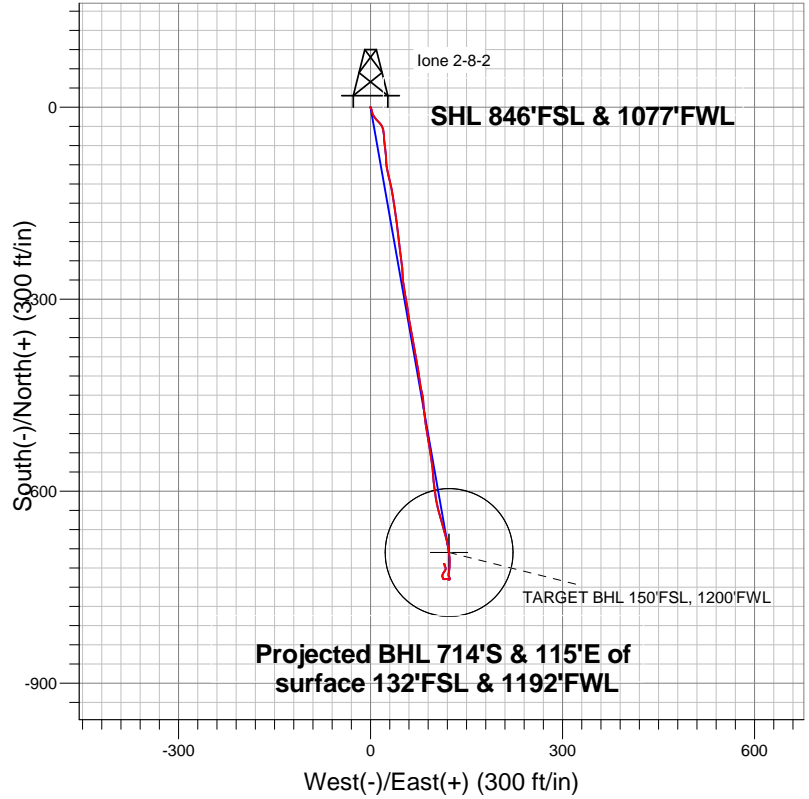
Surface Location: lone 4-4-2 Pad Sec.2-T2N-R66W
 North American Datum 1983 US State Plane 1983 Colorado Northern Zone
 Ground Elevation: 5048.0

+N/-S	+E/-W	Northing	Easting	Latitude	Longitude	Slot
0.0	0.0	1302866.53	3209629.32	40.162330	-104.749940	

 Original Well Elev WELL @ 5061.0ft (Original Well Elev)



EnCana Oil & Gas Weld County CO



LEGEND

- lone 2-8-2, Wellbore #1, Plan #1 (01-18-13) R V0
- Wellbore #1
- Survey #1

Final Survey Plot

Projected Final Survey -
 8178'MD & 8105'TVD @ 723'VS
 0.3 deg Inc 280.0 deg AZ

Project: SEC.2-T2N-R66W
 Site: lone 4-4-2 Pad Sec.2-T2N-R66W
 Well: lone 2-8-2
 Plan: Wellbore #1



EnCana Oil & Gas Weld County CO

SEC.2-T2N-R66W

lone 4-4-2 Pad Sec.2-T2N-R66W

lone 2-8-2

Wellbore #1

Survey: Survey #1

Standard Survey Report

25 January, 2013

Company:	EnCana Oil & Gas Weld County CO	Local Co-ordinate Reference:	Well Ione 2-8-2
Project:	SEC.2-T2N-R66W	TVD Reference:	WELL @ 5061.0ft (Original Well Elev)
Site:	Ione 4-4-2 Pad Sec.2-T2N-R66W	MD Reference:	WELL @ 5061.0ft (Original Well Elev)
Well:	Ione 2-8-2	North Reference:	True
Wellbore:	Wellbore #1	Survey Calculation Method:	Minimum Curvature
Design:	Wellbore #1	Database:	Landmark

Survey										
Measured Depth (ft)	Inclination (°)	Azimuth (°)	Vertical Depth (ft)	+N/-S (ft)	+E/-W (ft)	Vertical Section (ft)	Dogleg Rate (°/100ft)	Build Rate (°/100ft)	Turn Rate (°/100ft)	
1,386.0	2.90	142.70	1,385.6	-27.0	16.3	29.4	0.55	0.47	6.28	
1,472.0	3.60	157.20	1,471.4	-31.2	18.6	34.0	1.25	0.81	16.86	
1,557.0	4.40	168.80	1,556.2	-36.9	20.3	39.9	1.33	0.94	13.65	
1,643.0	5.70	178.10	1,641.9	-44.4	21.1	47.4	1.78	1.51	10.81	
1,728.0	6.90	175.40	1,726.4	-53.7	21.6	56.7	1.45	1.41	-3.18	
1,814.0	7.30	171.70	1,811.7	-64.3	22.8	67.3	0.71	0.47	-4.30	
1,900.0	7.50	174.90	1,897.0	-75.3	24.1	78.3	0.53	0.23	3.72	
1,985.0	7.70	177.50	1,981.2	-86.5	24.9	89.5	0.47	0.24	3.06	
2,071.0	8.40	168.10	2,066.4	-98.4	26.4	101.5	1.73	0.81	-10.93	
2,156.0	8.70	166.30	2,150.5	-110.7	29.2	114.1	0.47	0.35	-2.12	
2,242.0	10.00	167.50	2,235.3	-124.3	32.4	128.0	1.53	1.51	1.40	
2,328.0	12.00	172.80	2,319.7	-140.5	35.1	144.4	2.60	2.33	6.16	
2,413.0	12.80	170.20	2,402.8	-158.5	37.8	162.7	1.15	0.94	-3.06	
2,499.0	13.40	172.80	2,486.5	-177.8	40.7	182.2	0.98	0.70	3.02	
2,584.0	12.10	172.60	2,569.4	-196.4	43.1	200.9	1.53	-1.53	-0.24	
2,670.0	11.80	174.90	2,653.6	-214.1	45.0	218.7	0.65	-0.35	2.67	
2,756.0	12.80	170.50	2,737.6	-232.3	47.4	237.0	1.59	1.16	-5.12	
2,841.0	13.00	176.50	2,820.4	-251.1	49.5	255.9	1.59	0.24	7.06	
2,927.0	12.80	174.70	2,904.3	-270.2	51.0	275.0	0.52	-0.23	-2.09	
3,012.0	14.80	169.10	2,986.8	-290.3	53.9	295.2	2.83	2.35	-6.59	
3,098.0	14.20	171.90	3,070.1	-311.5	57.4	316.7	1.07	-0.70	3.26	
3,184.0	14.10	171.00	3,153.5	-332.3	60.6	337.8	0.28	-0.12	-1.05	
3,269.0	14.00	169.10	3,235.9	-352.6	64.1	358.4	0.56	-0.12	-2.24	
3,355.0	12.80	169.50	3,319.6	-372.2	67.8	378.3	1.40	-1.40	0.47	
3,440.0	14.00	170.20	3,402.3	-391.6	71.3	398.0	1.42	1.41	0.82	
3,526.0	12.60	170.20	3,486.0	-411.1	74.7	417.8	1.63	-1.63	0.00	
3,612.0	11.70	173.30	3,570.0	-429.0	77.3	435.9	1.29	-1.05	3.60	
3,697.0	12.00	166.10	3,653.2	-446.1	80.4	453.3	1.77	0.35	-8.47	
3,783.0	12.10	175.40	3,737.3	-463.8	83.3	471.2	2.26	0.12	10.81	
3,868.0	13.40	175.10	3,820.2	-482.5	84.8	489.9	1.53	1.53	-0.35	
3,954.0	13.20	171.60	3,903.9	-502.1	87.1	509.6	0.96	-0.23	-4.07	
4,040.0	13.00	169.50	3,987.7	-521.3	90.3	529.1	0.60	-0.23	-2.44	
4,125.0	14.60	169.30	4,070.2	-541.3	94.1	549.4	1.88	1.88	-0.24	
4,211.0	14.70	175.10	4,153.4	-562.8	97.0	571.1	1.71	0.12	6.74	
4,296.0	14.70	174.40	4,235.7	-584.3	99.0	592.6	0.21	0.00	-0.82	
4,382.0	13.50	170.90	4,319.1	-605.0	101.6	613.5	1.71	-1.40	-4.07	
4,468.0	12.60	167.40	4,402.9	-624.1	105.3	632.9	1.39	-1.05	-4.07	
4,553.0	10.90	164.50	4,486.1	-640.9	109.4	650.2	2.12	-2.00	-3.41	
4,639.0	9.30	164.90	4,570.7	-655.5	113.4	665.2	1.86	-1.86	0.47	
4,724.0	8.30	163.70	4,654.7	-668.0	116.9	678.1	1.20	-1.18	-1.41	
4,810.0	6.30	168.40	4,740.0	-678.6	119.6	689.0	2.43	-2.33	5.47	
4,896.0	6.10	169.60	4,825.5	-687.7	121.4	698.3	0.28	-0.23	1.40	
4,981.0	4.70	168.80	4,910.2	-695.5	122.9	706.3	1.65	-1.65	-0.94	
5,067.0	4.50	174.90	4,995.9	-702.3	123.9	713.2	0.61	-0.23	7.09	
5,152.0	4.40	177.40	5,080.6	-708.9	124.3	719.7	0.26	-0.12	2.94	
5,238.0	4.20	184.80	5,166.4	-715.4	124.2	726.1	0.69	-0.23	8.60	
5,324.0	2.50	187.00	5,252.2	-720.4	123.7	730.9	1.98	-1.98	2.56	
5,495.0	2.30	197.10	5,423.1	-727.3	122.2	737.5	0.27	-0.12	5.91	
5,666.0	1.60	149.10	5,594.0	-732.7	122.5	742.8	1.00	-0.41	-28.07	
5,837.0	0.80	155.90	5,764.9	-735.8	124.2	746.2	0.47	-0.47	3.98	
6,008.0	0.50	205.50	5,935.9	-737.6	124.3	748.0	0.36	-0.18	29.01	
6,180.0	0.60	270.50	6,107.9	-738.2	123.1	748.4	0.35	0.06	37.79	
6,351.0	0.60	300.40	6,278.9	-737.8	121.4	747.7	0.18	0.00	17.49	
6,522.0	0.80	275.80	6,449.9	-737.2	119.5	746.7	0.21	0.12	-14.39	

Company:	EnCana Oil & Gas Weld County CO	Local Co-ordinate Reference:	Well Ione 2-8-2
Project:	SEC.2-T2N-R66W	TVD Reference:	WELL @ 5061.0ft (Original Well Elev)
Site:	Ione 4-4-2 Pad Sec.2-T2N-R66W	MD Reference:	WELL @ 5061.0ft (Original Well Elev)
Well:	Ione 2-8-2	North Reference:	True
Wellbore:	Wellbore #1	Survey Calculation Method:	Minimum Curvature
Design:	Wellbore #1	Database:	Landmark

Survey										
Measured Depth (ft)	Inclination (°)	Azimuth (°)	Vertical Depth (ft)	+N/-S (ft)	+E/-W (ft)	Vertical Section (ft)	Dogleg Rate (°/100ft)	Build Rate (°/100ft)	Turn Rate (°/100ft)	
6,693.0	0.70	272.10	6,620.9	-737.0	117.3	746.2	0.06	-0.06	-2.16	
6,864.0	0.80	249.80	6,791.9	-737.4	115.1	746.2	0.18	0.06	-13.04	
7,036.0	0.40	344.20	6,963.9	-737.3	113.8	745.8	0.54	-0.23	54.88	
7,207.0	2.00	338.60	7,134.8	-733.9	112.6	742.3	0.94	0.94	-3.27	
7,378.0	4.10	36.40	7,305.6	-726.2	115.1	735.1	2.03	1.23	33.80	
7,549.0	1.90	326.80	7,476.4	-718.9	117.2	728.3	2.26	-1.29	-40.70	
7,720.0	0.70	18.50	7,647.4	-715.5	115.9	724.8	0.92	-0.70	30.23	
7,892.0	0.40	335.90	7,819.4	-714.0	116.0	723.3	0.28	-0.17	-24.77	
8,063.0	0.40	236.40	7,990.4	-713.8	115.3	723.0	0.36	0.00	-58.19	
8,135.0	0.30	278.40	8,062.4	-713.9	114.9	723.0	0.37	-0.14	58.33	
8,178.0	0.30	280.00	8,105.4	-713.9	114.7	722.9	0.02	0.00	3.72	

Checked By: _____	Approved By: _____	Date: _____
-------------------	--------------------	-------------