



File Name: SNU1-32\_dda\_10-15-2012-01

**Redwine Bond Claim, South Nucla Unit 1-32, API No. 05-085-06047**

Date: 10-15-2012

Photographer: David Andrews

Facing: north

Description: Erosion along access road, taken near top of access road near northwest corner of well pad.



File Name: SNU1-32\_dda\_10-15-2012-02

**Redwine Bond Claim, South Nucla Unit 1-32, API No. 05-085-06047**

Date: 10-15-2012

Photographer: David Andrews

Facing: north-northwest

Description: View from northwest corner of pad; weeds on pad perimeter berm.





File Name: SNU1-32\_dda\_10-15-2012-03

**Redwine Bond Claim, South Nucla Unit 1-32, API No. 05-085-06047**

Date: 10-15-2012

Photographer: David Andrews

Facing: west-northwest

Description: View downslope to drainage, which runs from south to north along toe of fill slope on west side of pad; weeds on fill slope with debris pile near toe of slope.



File Name: SNU1-32\_dda\_10-15-2012-04

**Redwine Bond Claim, South Nucla Unit 1-32, API No. 05-085-06047**

Date: 10-15-2012

Photographer: David Andrews

Facing: south-southwest

Description: View of fill slope on west side of pad and adjacent drainage, taken from the northwest corner of the pad; weeds on fill slope.





File Name: SNU1-32\_dda\_10-15-2012-05

**Redwine Bond Claim, South Nucla Unit 1-32, API No. 05-085-06047**

Date: 10-15-2012

Photographer: David Andrews

Facing: east

Description: View of northern edge of pad with weeds on fill; erosion on cut face and netting over pit in upper right.



File Name: SNU1-32\_dda\_10-15-2012-06

**Redwine Bond Claim, South Nucla Unit 1-32, API No. 05-085-06047**

Date: 10-15-2012

Photographer: David Andrews

Facing: north

Description: View of silt fence in disrepair downslope and to the north of the pad, taken near the northeast corner of the pad.





File Name: SNU1-32\_dda\_10-15-2012-07

**Redwine Bond Claim, South Nucla Unit 1-32, API No. 05-085-06047**

Date: 10-15-2012

Photographer: David Andrews

Facing: east

Description: Weeds on fill at the northeast corner of the pad; silt fence in disrepair in background.



File Name: SNU1-32\_dda\_10-15-2012-08

**Redwine Bond Claim, South Nucla Unit 1-32, API No. 05-085-06047**

Date: 10-15-2012

Photographer: David Andrews

Facing: south

Description: Lined drilling pit with netting; netting under water in several places, with gaps allowing access to pit along the perimeter; water present in northern end of pit (foreground), but mostly evaporated on southern end; wellhead in background on right; erosion along cut slope on left.





File Name: SNU1-32\_dda\_10-15-2012-09

**Redwine Bond Claim, South Nucla Unit 1-32, API No. 05-085-06047**

Date: 10-15-2012

Photographer: David Andrews

Facing: southeast

Description: Northeast corner of pit and erosion along cut slope.



File Name: SNU1-32\_dda\_10-15-2012-10

**Redwine Bond Claim, South Nucla Unit 1-32, API No. 05-085-06047**

Date: 10-15-2012

Photographer: David Andrews

Facing: southwest

Description: View of drilling pit and wellhead from northeast corner of the pad.





File Name: SNU1-32\_dda\_10-15-2012-11

**Redwine Bond Claim, South Nucla Unit 1-32, API No. 05-085-06047**

Date: 10-15-2012

Photographer: David Andrews

Facing: northwest

Description: Overview photo of well pad from the east edge of the pad.



File Name: SNU1-32\_dda\_10-15-2012-12

**Redwine Bond Claim, South Nucla Unit 1-32, API No. 05-085-06047**

Date: 10-15-2012

Photographer: David Andrews

Facing: northwest

Description: Overview photo of well pad from the southeast corner of the pad.





File Name: SNU1-32\_dda\_10-15-2012-13

**Redwine Bond Claim, South Nucla Unit 1-32, API No. 05-085-06047**

Date: 10-15-2012

Photographer: David Andrews

Facing: southwest

Description: View of debris pile and weeds near southeast corner of the pad.



File Name: SNU1-32\_dda\_10-15-2012-14

**Redwine Bond Claim, South Nucla Unit 1-32, API No. 05-085-06047**

Date: 10-15-2012

Photographer: David Andrews

Facing: north-northwest

Description: View of drilling pit and wellhead from southeastern portion of the well pad; cut slope on right.





File Name: SNU1-32\_dda\_10-15-2012-15

**Redwine Bond Claim, South Nucla Unit 1-32, API No. 05-085-06047**

Date: 10-15-2012

Photographer: David Andrews

Facing: east

Description: Fill slope with weeds and debris pile along southern side of well pad.



File Name: SNU1-32\_dda\_10-15-2012-16

**Redwine Bond Claim, South Nucla Unit 1-32, API No. 05-085-06047**

Date: 10-15-2012

Photographer: David Andrews

Facing: southwest

Description: Fill slope and weeds; silt fence in disrepair at toe of slope near southwest corner of well pad.





File Name: SNU1-32\_dda\_10-15-2012-17

**Redwine Bond Claim, South Nucla Unit 1-32, API No. 05-085-06047**

Date: 10-15-2012

Photographer: David Andrews

Facing: southwest

Description: Erosion channel in fill slope near southwest corner of well pad.



File Name: SNU1-32\_dda\_10-15-2012-18

**Redwine Bond Claim, South Nucla Unit 1-32, API No. 05-085-06047**

Date: 10-15-2012

Photographer: David Andrews

Facing: north

Description: Fill slope with weeds along west side of well pad; drainage, running south to north, along toe of fill slope.





File Name: SNU1-32\_dda\_10-15-2012-19

**Redwine Bond Claim, South Nucla Unit 1-32, API No. 05-085-06047**

Date: 10-15-2012

Photographer: David Andrews

Facing: south

Description: Realtor sign at south edge of well pad.



File Name: SNU1-32\_dda\_10-15-2012-20

**Redwine Bond Claim, South Nucla Unit 1-32, API No. 05-085-06047**

Date: 10-15-2012

Photographer: David Andrews

Facing: northeast

Description: View of three marked anchors and wellhead (fourth not shown to the right of the photo); drilling pit and cut slope on right.





File Name: SNU1-32\_dda\_10-15-2012-21

**Redwine Bond Claim, South Nucla Unit 1-32, API No. 05-085-06047**

Date: 10-15-2012

Photographer: David Andrews

Facing: northwest

Description: Bradenhead valve in foreground and well head in background, surrounded by weeds.





File Name: SNU1-32\_dda\_10-15-2012-22

**Redwine Bond Claim, South Nucla Unit 1-32, API No. 05-085-06047**

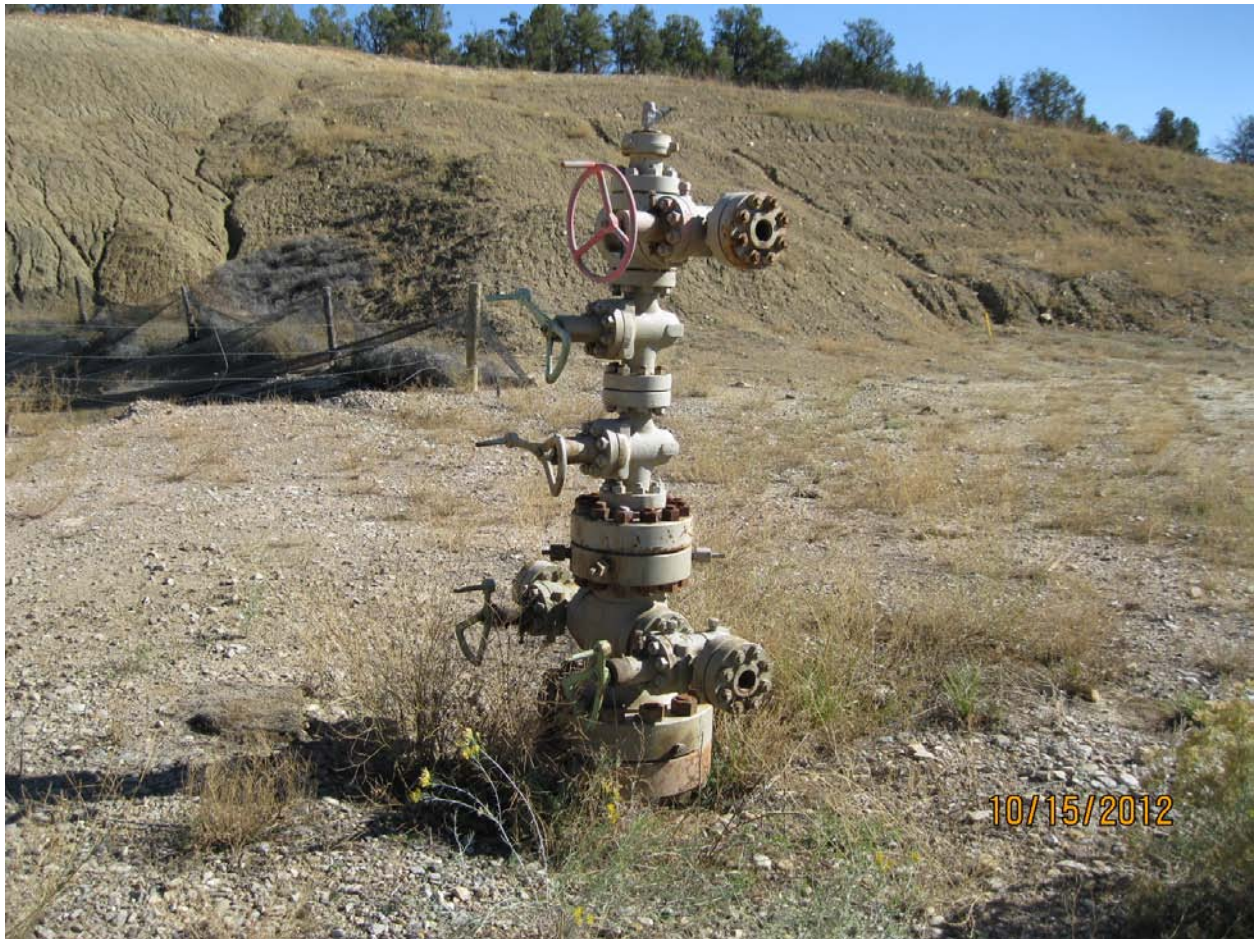
Date: 10-15-2012

Photographer: David Andrews

Facing: southwest

Description: Wellhead surrounded by weeds in foreground; marked anchor in background.





File Name: SNU1-32\_dda\_10-15-2012-23

**Redwine Bond Claim, South Nucla Unit 1-32, API No. 05-085-06047**

Date: 10-15-2012

Photographer: David Andrews

Facing: southeast

Description: Wellhead surrounded by weeds in foreground; drilling pit, eroded cut slope, and marked well anchor in background.